

KALEIDOSCOPE QUILT (PINK & BLUE)

SIZE: 36" W X 36" H | LEVEL: CONFIDENT BEGINNER | PATTERN BY: PROJECT HOUSE 360

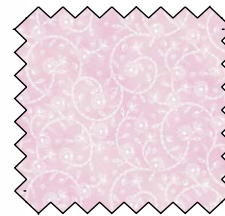
FREE PATTERN AVAILABLE AT WWW.MICHAELMILLERFABRICS.COM



FABRIC REQUIREMENTS FOR 1 PINK QUILT:

SKU	YARDAGE PER QUILT
CX10410 WHITE	1 1/2 YARDS
DCX12617 BLOSSOM	1/2 YARD
CX10480 WHITE	1 1/2 YARDS
DCX12928 BUBBLE GUM	3/8 YARD
DCX12621 BLUSH	3/8 YARD
DCX12620 GERANIUM	3/8 YARD
DCX12927 GERANIUM	3/8 YARD

***NO BINDING OR BACKING**



WIDE BACK

108 INCH WIDE BACK COTTON

PAIR OUR WIDE BACK

WBX8912-PINK

SURREY

WITH THIS PROJECT! USE
1 1/2 YARDS FOR BACKING

*IMAGE SHOWN NOT TRUE TO SCALE

*THIS IS A DIGITAL REPRESENTATION OF THE QUILT TOP. FABRIC MAY VARY.

FABRIC REQUIREMENTS FOR 1 BLUE QUILT:

SKU	YARDAGE PER QUILT
CX10410 WHITE	1 1/2 YARDS
DCX12617 BREEZE	1/2 YARD
CX10480 WHITE	1 1/2 YARDS
DCX12928 ICE BLUE	3/8 YARD
DCX12621 ROBIN'S EGG	3/8 YARD
DCX12620 ICE BLUE	3/8 YARD
DCX12927 MULTI	3/8 YARD

***NO BINDING OR BACKING**



WIDE BACK

108 INCH WIDE BACK COTTON

PAIR OUR WIDE BACK

WBX9414-BLUE

WATERCOLORS

WITH THIS PROJECT! USE
1 1/2 YARDS FOR BACKING

*IMAGE SHOWN NOT TRUE TO SCALE

