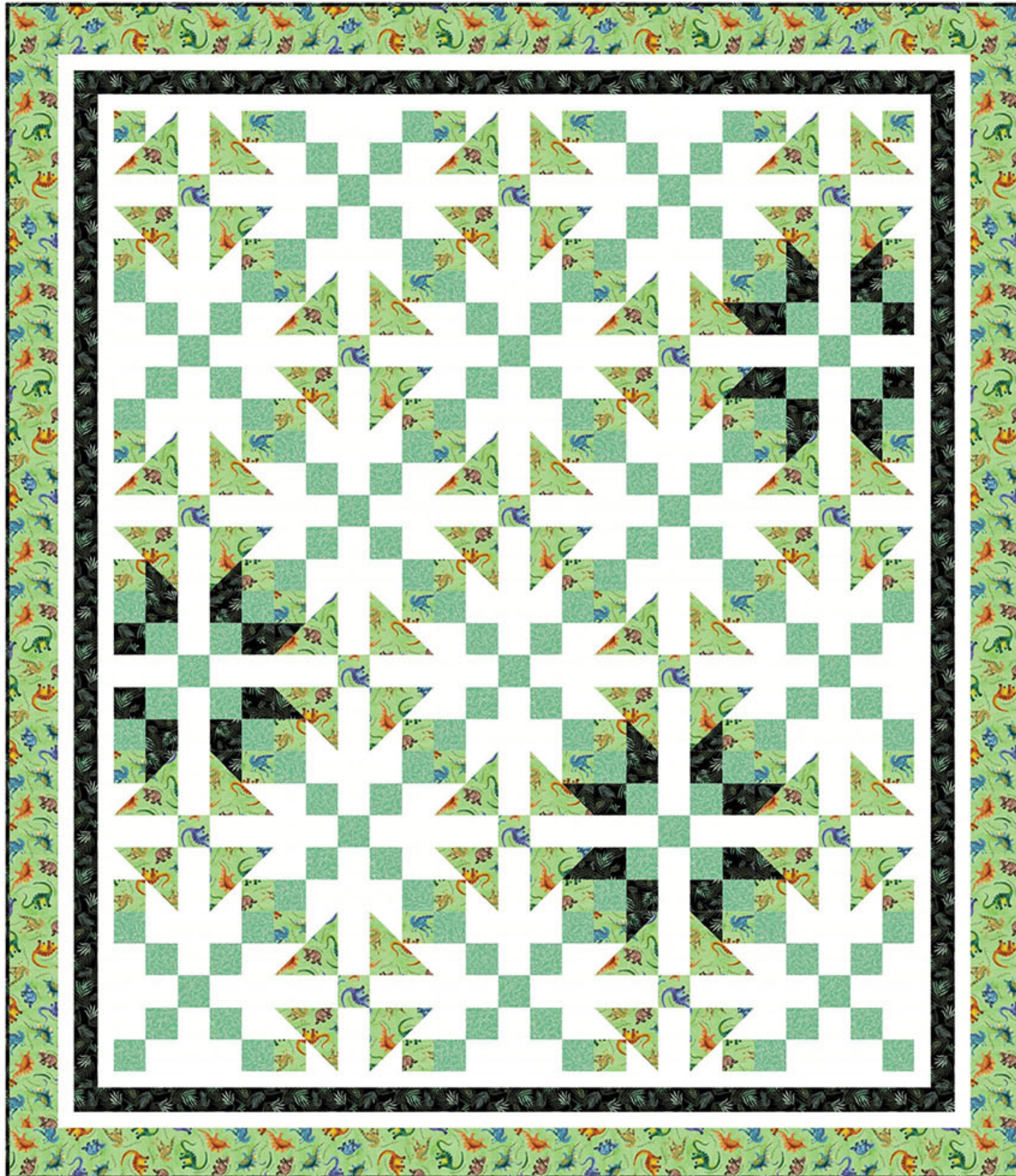
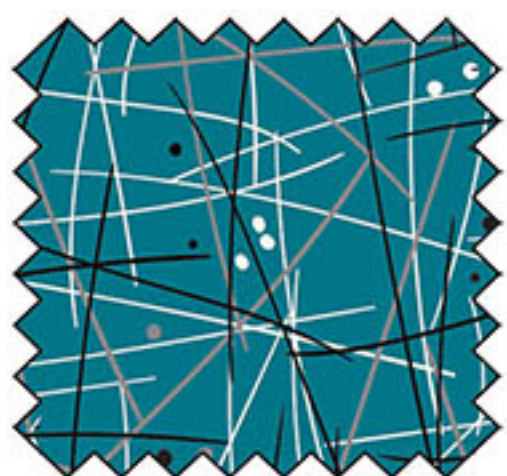


STAR BRIGHT QUILT

SIZE: 63 1/2"W X 72 1/2"H | LEVEL: INTERMEDIATE | PATTERN BY: BRENDA PLASTER
COMMERCIAL PATTERN AVAILABLE AT WWW.SPOOLANDBOBBINQUILTING.COM



*THIS IS A DIGITAL REPRESENTATION OF THE QUILT TOP. FABRIC MAY VARY.



WIDE BACK

108 INCH WIDE BACK COTTON

PAIR OUR WIDE BACK
**WBX8713-BLUE
SWIZZLE STICK**
WITH THIS PROJECT! USE
2 YARDS FOR BACKING

*IMAGE SHOWN NOT TRUE TO SCALE

FABRIC REQUIREMENTS FOR 1 KIT:

SKU	YARDAGE PER QUILT
SC5333-BRIGHT WHITE	2 5/8 YARDS
DCX11861-CELERY	3/4 YARD
DCX11857-CELERY	1 7/8 YARDS
DCX11858-BLACK*	1 1/4 YARDS
DCX11858-CREAM**	6 1/4 YARDS

*INCLUDES BINDING | **BACKING

WWW.MICHAELMILLERFABRICS.COM | INFO@MICHAELMILLERFABRICS.COM | 212.704.0774

michael miller FABRICS