

I NEED A VACATION *Quilt*

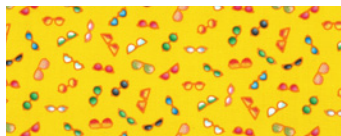




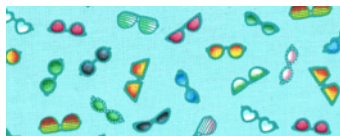
FABRIC REQUIREMENTS



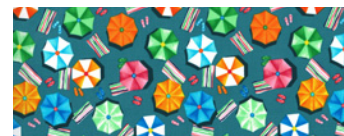
CX8612 Sand
Sun and Fun
5/8 yard



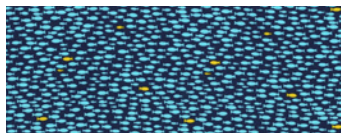
CX8616 Yellow
Cool Shades
Fat 1/4



CX8616 Aqua
Cool Shades
Fat 1/4



CX8613 Teal
Sun Cover
Fat 1/4



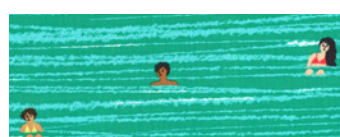
CX8615 Navy
On the Wave
1/2 yard



CX8617 Cream
Beach Mat
1/4 yard



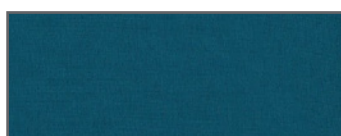
CX8613 Sand
Sun Cover
Fat 1/4



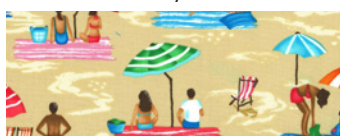
CX8614 Ocean
Going for a dip
1/2 yard



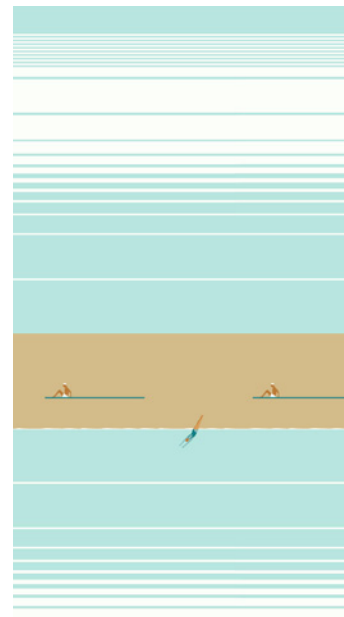
CX6699 Orange
Hash Dot
Fat 1/8



SC5333 Marine
Cotton Couture
3/8 yard



OPTIONAL: CX8612 Sand
Sun and Fun
1 5/8 yards



CX8611 Aqua
I need a vacation
7/8 yard

Fabric	12 Kits	24 Kits
CX8611 Aqua	10 1/2 yards (1) bolt	21 yards (2) bolts
CX8614 Ocean	6 yards (1) bolt	12 yards (1) bolt
CX8612 Sand	7 1/2 yards (1) bolt	15 yards (1) bolt
CX8616 Yellow	3 yards (1) bolt	6 yards (1) bolt
CX8616 Aqua	3 yards (1) bolt	6 yards (1) bolt
CX8613 Teal	3 yards (1) bolt	6 yards (1) bolt
CX8613 Sand	3 yards (1) bolt	6 yards (1) bolt
CX8615 Navy	6 yards (1) bolt	12 yards (1) bolt
CX8617 Cream	3 yards (1) bolt	6 yards (1) bolt
CX6699 Orange	1 1/2 yards (1) bolt	3 yards (1) bolt
SC5333 Marine	4 1/2 yards (1) bolt	9 yards (1) bolt
CX8612 Sand (Optional Backing)	19 1/2 yards (2) bolts	39 yards (3) bolts

I Need a Vacation

Quilt designed by Marinda Stewart

Size 42" W x 56" H

Skill Level: Confident Beginner

Note: Quilt is assembled in (7) vertical rows - 6 1/2" x 56 1/2" each

Fabrics	Yardage	Cutting
CX8611 Aqua I Need a Vacation	7/8 yard	(1) 6 1/2" W x 20 1/2" H (1) 6 1/2" W x 16 1/2" H (2) 6 1/2" W x 18 1/2" H * & **
CX8614 Ocean Going for a Dip	1/2 yard	(1) 6 1/2" W x 16 1/2" H (2) 6 1/2" W x 8 1/2" H (2) 6 1/2" W x 12 1/2" H * & **
CX8612 Sand Sun and Fun	5/8 yard	(1) 6 1/2" W x 18 1/2" H (1) 6 1/2" W x 8 1/2" H (1) 6 1/2" W x 20 1/2" H (1) 6 1/2" W x 14 1/2" H * & **
CX8616 Yellow Cool Shades	Fat 1/4	(14) 4" squares
CX8616 Aqua Cool Shades	Fat 1/4	(6) 7" squares
CX8613 Teal Sun Cover	Fat 1/4	(14) 4" squares
CX8613 Sand Sun Cover	Fat 1/4	(6) 7" squares
CX8615 Navy On the Wave	1/2 yard	(9) 6 1/2" squares
CX8617 Cream Beach Mat	1/4 yard	(6) 6 1/2" squares
CX6699 Orange	Fat 1/8	(6) 4" squares dub cut into

Hash Dot		(12) Half Square Triangles or HST
SC5333 Marine Cotton Couture	3/8 yard	(5) 2 1/2" x W.O.F. - binding
Optional Backing: CX8612 Sand Sun and fun	1 5/8 yards	Backing
Also Needed: 45" x 60" batting, scissors, straight pins, threads to match, rotary cutter, acrylic ruler, and mat. <p style="text-align: center;">-----</p> <p style="text-align: center;">* Center on motif</p> <p style="text-align: center;">** Keep motifs upright - one way print</p>		

Directions:

1. For (1) 6 1/2" unfinished pinwheel block. Place one 4" CX8616 Yellow square right sides together on top of one CX8613 Teal 4" square. Draw a diagonal line from corner to corner. Sew 1/4" on each side of the drawn line. Cut apart on the drawn line. Press. Trim each (2) of the HST (1/2 square triangle) to an accurate 3 1/2" square. Make a second set of HST. Sew (4) HST together as shown to make one 6 1/2" pinwheel block. Make (7) blocks total. Set aside.

2. For 1/4 unit of a 12 1/2" pinwheel block with a contrast center: place one CX8613 Sand 7" square right sides together on top of one CX8616 Aqua 7" square. Repeat the procedure in Step #1. Make (4) HST. Trim each to an accurate 6 1/2" square. Place one CX6699 4" triangle across one end of one block right sides together as shown. Leave 1/4" extending outside of the block on each side of the triangle. Stitch CX6699 triangle in place right sides together. Press open. Trim excess fabric from the back. Repeat for each 6 1/2" HST as shown. Make (12) 1/4 block units. Set aside.

3. To assemble quilt: Start from the left and move to the right row by row.

Make vertical rows as follows, assemble from the top to the bottom.

Row #1 - 6 1/2" CX8615, (1) CX8611 6 1/2" W x 16 1/2" H, (1) CX8617 6 1/2" piece, (1) 6 1/2" CX8615, (1) 6 1/2" pinwheel, and (1) CX8616 6 1/2" W x 16 1/2" H.

Row #2 - 1/4 HST block, 1/4 HST Block (see photo for correct placement), (1) 6 1/2" pinwheel, (1) 6 1/2" CX8615, CX8612 6 1/2" W x 18 1/2" H, CX8617 - 6 1/2" square, (1) CX8612 6 1/2" W x 8 1/2" H.

Row #3 - (1) 1/4 HST Block, (1) 1/4 HST Block (complete block as shown), CX8611 - 6 1/2" W x 20 1/2" H, (1) 6 1/2" CX8615, (1) 1/4 HST Block, (1) 1/4 HST Block placed as shown, (1) 6 1/2" CX8615.

Row #4 - 6 1/2" CX8617, 6 1/2" CX8615, CX8614 6 1/2" W x 12 1/2", (1) 6 1/2" pinwheel, CX8614 6 1/2" W x 8 1/2" H, (1) 1/4 HST Block, (1) 1/4 HST Block (arranged to complete the 12 1/2" block as shown), (1) 6 1/2" pinwheel block.

Row #5 - (1) 6 1/2" pinwheel, (1) CX8612 6 1/2" W x 20 1/2" H, (1) CX8615 6 1/2" square, (1) CX8611 6 1/2" W x 18 1/2" H, (1) 6 1/2" CX8617 square.

Row #6 - CX8611 6 1/2" W x 18 1/2" H, 1/4 HST Block, 1/4 HST Block (placed as shown), 6 1/2" CX8617 square, (1) 6 1/2" pinwheel block, (1) CX8612 6 1/2" W x 14 1/2" H.

Row #7 - (1) CX8615 6 1/2" square, (1) 6 1/2" pinwheel block, (1) 6 1/2" CX8617 square, (1) 1/4 HST block, (1) 1 1/4 HST Block (arranged as shown), (1) CX8614 6 1/2" W x 12 1/2" H, (1) 6 1/2" CX8615 square, (1) CX8614 6 1/2" W x 8 1/2".

4. Layer backing CX8616 1 5/8 piece (OPTIONAL) wrong side up, batting, and quilt top right side up. Baste.

5. Quilt as desired.

6. Bind quilt using SC5333 2 1/2" strips pieces as needed for length.

Kit Info

Pattern	12 Kits	24 Kits
CX8611 Aqua	10 1/2 yards or (1) bolt	21 yards or (2) bolts
CX8614 Ocean	6 yards or (1) bolt	12 yards or (1) bolt
CX8612 Sand	7 1/2 yards or (1) bolt	15 yards or (1) bolt
CX8616 Yellow	3 yards or (1) bolt	6 yards or (1) bolt
CX8616 Aqua	3 yards or (1) bolt	6 yards or (1) bolt
CX8613 Teal	3 yards or (1) bolt	6 yards or (1) bolt
CX8613 Sand	3 yards or (1) bolt	6 yards or (1) bolt
CX8615 Navy	6 yards or (1) bolt	12 yards or (1) bolt
CX8617 Cream	3 yards or (1) bolt	6 yards or (1) bolt
CX6699 Orange	1 1/2 yards or (1) bolt	3 yards or (1) bolt
SC5333 Marine	4 1/2 yards or (1) bolt	9 yards or (1) bolt
OPTIONAL BACKING CX8612 Sand	19 1/2 yards or (2) bolts	39 yards or (3) bolts