



Camper Cowl



Camper Cowl

The Camper Cowl

Is a cowl-shaped scarf which can be made reversible for two cowls in one!

Supplies

- sewing machine
- one or two pieces of fabric
- thread to match
- pins
- scissors

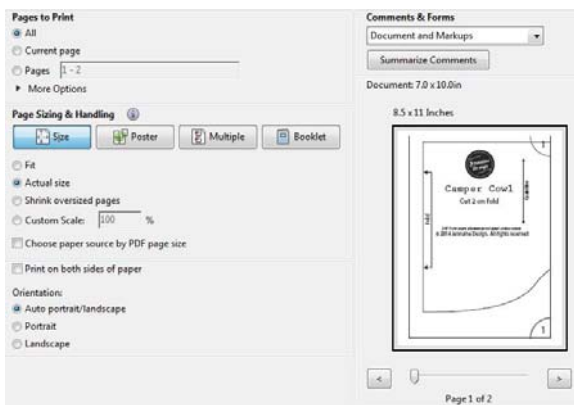
Fabric

This project is a great way to feature fun fabrics! Use the same fabric for both pieces, or use a different fabric on each side so you can choose which side to show.

You'll need two 1/3 yard pieces or one 2/3 yard piece to make this cowl.



Printing and Taping Pattern Pieces



There are two pages with the pattern pieces to make the Camper Cowl. With the file opened in Adobe Reader, print the pattern pages 6 & 7. Be sure to print with "no scaling" "100%" or "Actual Size" depending on your printer settings.

Check the scale square to be sure the pattern pieces printed correctly - it's okay on this project if they're just a teensy bit off.

Overlap the two pages so the lines are continuous and the half circles are aligned. Tape in place and cut around the pattern piece using paper scissors. Fabric scissors should not be used to cut paper as it will dull them!

Camper Cowl

Sewing Instructions

All seam allowances are 3/8"/1cm except where noted. All seams are enclosed or finished.

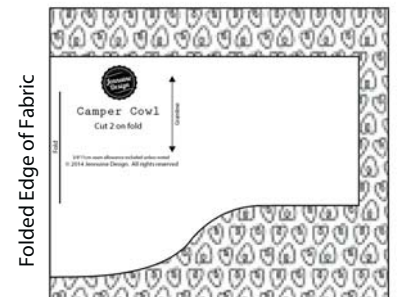
Sample fabrics and shading are used to show right and wrong sides of fabrics. The wrong side is shown with solid gray.

1 Start by cutting out the two pieces of the cowl. Arrange the fabric so the fold is on the left and place the pattern piece on top with the left edge marked "fold" aligned with the edge.

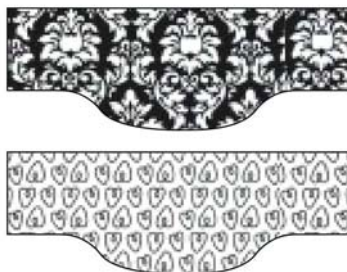
Either pin the pattern in place and cut around the edge, or trace the piece with a pencil and cut.



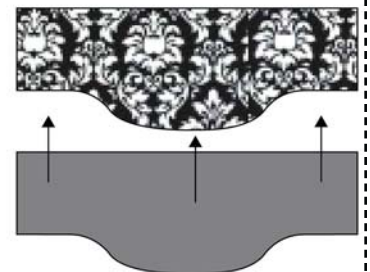
2 Repeat using the other fabric.



3 Now you have both pieces of the cowl cut out - open the pieces up to their full width.



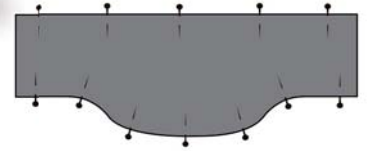
4 Flip one piece over so the right sides of the fabric are facing towards each other and lay them on top of one another. Make sure all the edges are lined up.



Camper Cowl

5 Pin the two fabrics together along the two long edges.

CRAFTY CAMPER TIP: Place pins so they're perpendicular to the edge as shown. That way if you forget to pull the pins out while sewing, the needle should skip right over the pin.



6 Sew along both long sides of the cowl pieces. The distance from the edge, called a seam allowance should be $3/8$ "/1cm, which is usually the width of the presser foot. This makes it easy to line up the *presser foot with the edge of the fabric and go!

Remove pins as you sew.

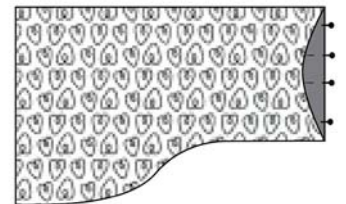
*The presser foot is the attachment that is used to hold the fabric in place while you stitch.



7 Now comes the fun part! Reach inside the cowl and pull it right side out.

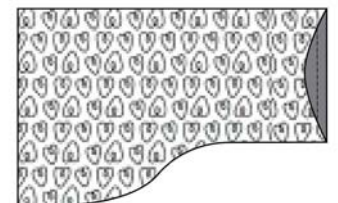
Line up the open ends of one side of the cowl (doesn't matter which!) and pin in place.

Try to get the seams at each end to line up.



8 Sew one side of the opening together. Be sure that the top and bottom unpinned edges don't get caught in the line of stitching.

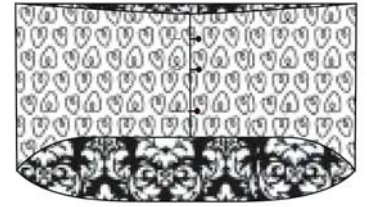
EXTRA CREDIT: If you're careful, you can start sewing a little above and below the seams so the opening is smaller for the next step. Keep the edges aligned and work the fabric around the presser foot.



Camper Cowl

9 Pull the seam you just made to the inside and line up the raw edges so they're tucked inside. Arrange so that the folded edge is straight up and down and pin in place.

Be sure not to pin through the wider front side of the cowl, or sewing the next step won't work.

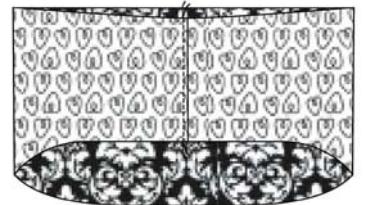


9 The last step is to sew the opening closed.

Sew close to the edge of the fold. Be super careful not to sew this seam to the wider front part of the cowl, or your head won't be able to go through the cowl!

TIP! CRAFTY CAMPER TIP: Use a locking stitch at each end of this seam to keep it from unraveling.

Stitch forward and backward over the same stitching line for several stitches and then continue on.



Hooray! You've finished your Camper Cowl!

I'd love to see your versions:

- Follow me on Instagram [@jennuinelife](https://www.instagram.com/jennuinelife) and share your Camper Cowls using hashtag #CamperCowl
- On Facebook in the Jennuine Design Pattern Group at <https://www.facebook.com/groups/241518859377669/>, or
- Upload to Flickr pool <https://www.flickr.com/groups/jennuinedesign/>



Camper Cowl

Cut 2 on fold



3/8"/1cm seam allowance included unless noted
© 2014 Jenuine Design. All rights reserved

1

1

2

Grainline

ed
erved

3" Test Square

5 cm
Test Square

2