

Bed Skirt

Prepared by Joanna Armour (www.stardustshoes.blogspot.com) For personal use only.

Materials Needed:

- An old bed sheet cut to the size of the box spring
- Fabric cut to the necessary dimensions (see diagram)
- Rotary cutter and straight edge



This bed skirt is made by attaching a skirt to three sides of a sheet that is cut to the dimensions of the box spring. The middle of each side has a pleat that requires 8" of fabric. The corners are pleated also.

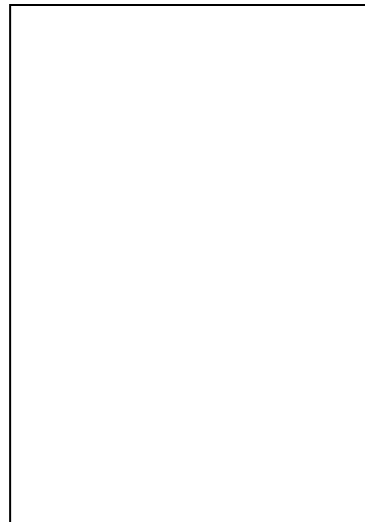
Determine the height of the skirt by measuring from the bottom of the mattress to the floor and adding $\frac{1}{2}$ " for the hem and $\frac{1}{4}$ " for the seam allowance.



Actual measurement of side A
 + ½" side hem
 + 8" for center pleat
 + 4" for corner half pleat

= _____

Side A



Side B

Side C

Same calculations as for side A

= _____

Actual measurement of side B
 + 4" for corner half pleat
 + 8" for center pleat
 + 4" for corner half pleat

= _____

Total length of skirt needed:

Using a straight edge and rotary cutter, cut out the bed sheet to the actual dimensions of the box spring. Use a fabric marker to mark the centers of each side to determine where the pleats will be located.

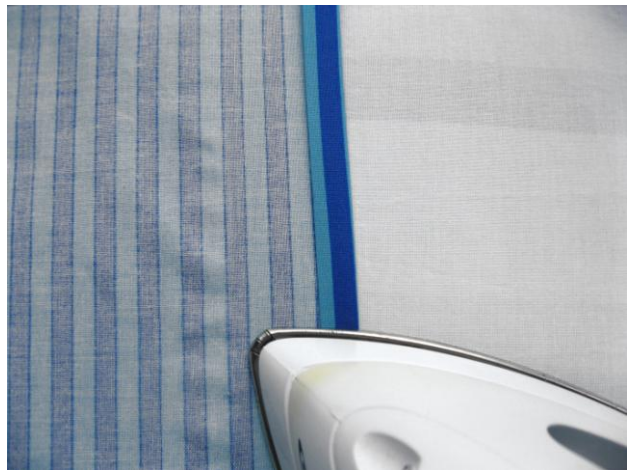
Cut and piece the skirt to the proper length. You may use the French seam if desired to enclose raw edges. In my experience, bed skirts are so rarely laundered, that I don't mind exposed seams. Other options include pinking the seams, serging them or using an overlocking stitch to keep them from fraying.

Hem the Side:

Finish one edge of the bed skirt by folding the side in $\frac{1}{4}$ ". Press.



Fold it in again $\frac{1}{4}$ ". Press.



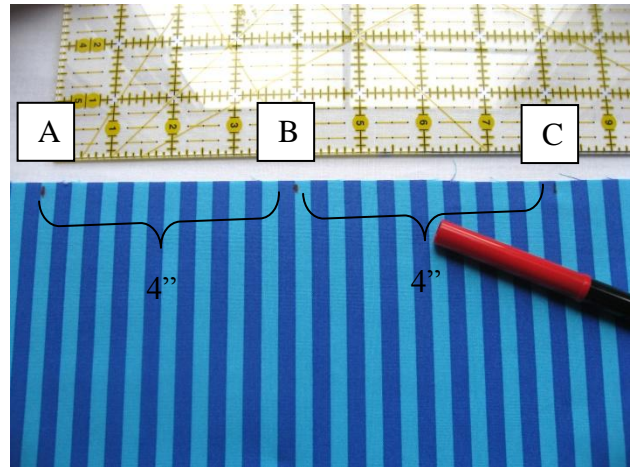
Sew it close to the inside edge.



Start sewing the skirt onto the sheet with right sides facing using a $\frac{1}{4}$ " seam allowance. When you approach a center mark, stop a few inches before you get to it and remove the project from the sewing machine.

Create the Pleat:

From where the skirt meets the center point of the sheet (A), measure and mark 4 inches out (B) and then again 4 inches beyond that (C).



Fold it right sides together so that A sits directly on top of B.



Keeping A and B in contact, fold the fabric back onto itself again this time wrong sides together, as pictured.



Do the same on the other side by bringing C into contact with B, ironing, and folding it back again. Iron everything nice and flat. Make sure the top is lined up.



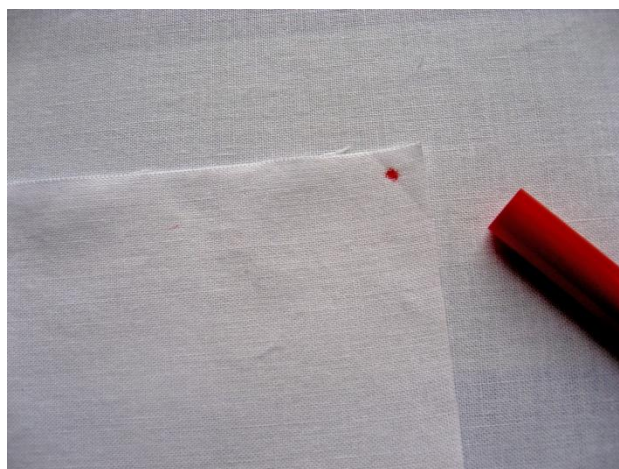
Pin in place and bring it to the machine to baste the pleat.

Continue sewing the skirt to the sheet until you approach the corner. Remove the project from the machine.

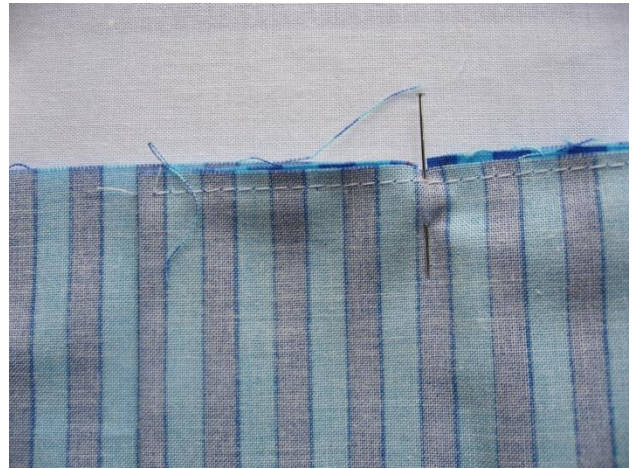


Make the Corner Pleat:

The corner pleat is made in the same way, except that it will be centered on the corner of the bed sheet. Mark $\frac{1}{4}$ " from both sides of the bed sheet.



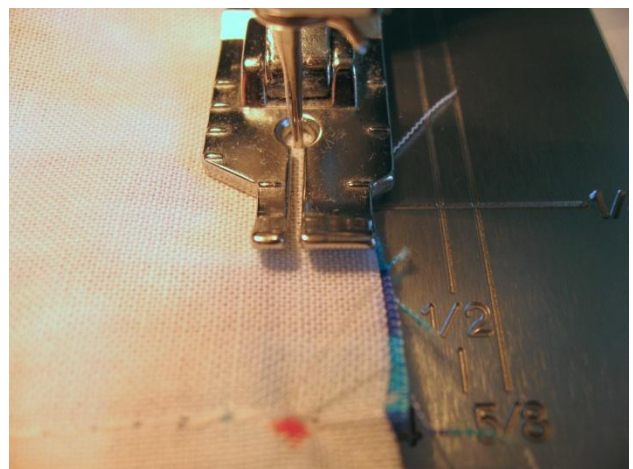
After making the pleat using the method above, mark the center of the pleat.



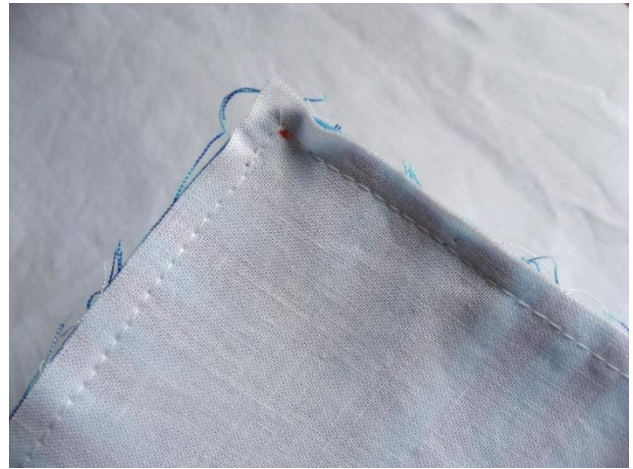
Line up the center of the pleat with the mark on the corner. Take a peek from the other side to make sure everything is all lined up.



Bring it to the machine and sew. Stop sewing at the mark. Backstitch to reinforce. Remove the project from the machine so that you can line up the other half of the pleat around the corner. Start sewing at the mark.



Your corner should look like this:



When turned right side out, it will look like this:

Continue sewing the bedskirt placing pleats as you go. When you get to the end of side C, make another side hem.

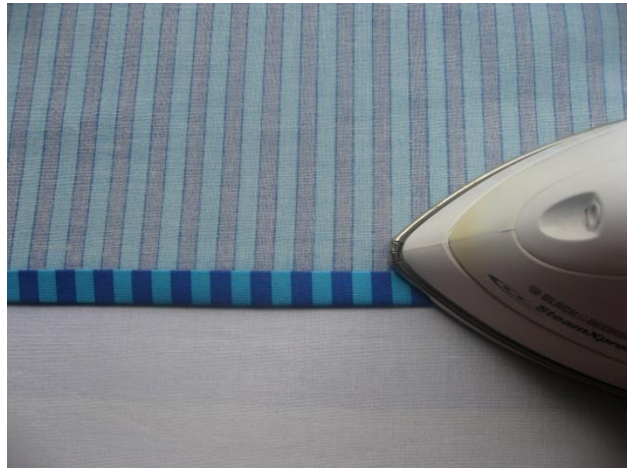


Hem the Bed Skirt:

Fold the bottom up ¼" and iron.



Once again, fold it $\frac{1}{4}$ " and iron.



Sew it close to the inner edge. ♦

