

# Round Cushion

Prepared by Joanna Armour ([www.stardustshoes.blogspot.com](http://www.stardustshoes.blogspot.com)) For personal use only.

## Materials Needed:

Coordinating fabric for:  
2 round panels (14" in diameter),  
1 side panel (42" x 4-1/2"),  
and 2 lengths of bias trim (42" x 2").

All pieces (except for the bias trim) are interfaced with canvas.

## Also needed:

Paper to make the pattern  
A zipper foot  
Cording for piping  
A piece of tape  
A bamboo skewer  
Polyester fiberfill stuffing



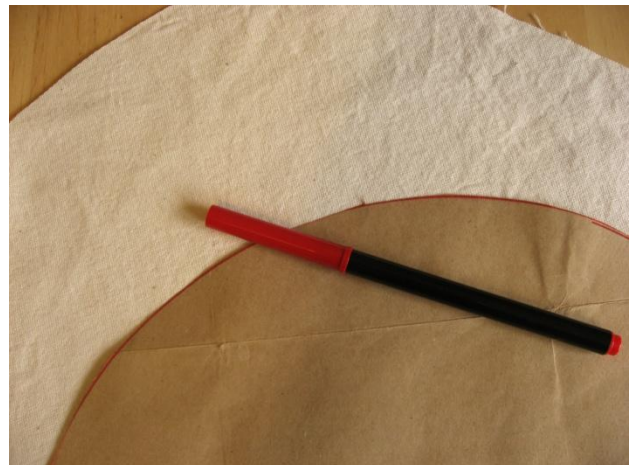
This cushion features fabric from the Michael Miller Bot Camp collection.

## Make the Pattern:

Find a large circular object to trace around. (I traced around the top of my trash can—a large fry pan or pizza pan would work as well.) My circle is 14" in diameter. (If using a different sized circle, your side piece, bias strips and cording should be calculated by measuring the circumference of the circle and adding 2").

## Interface the Fabric:

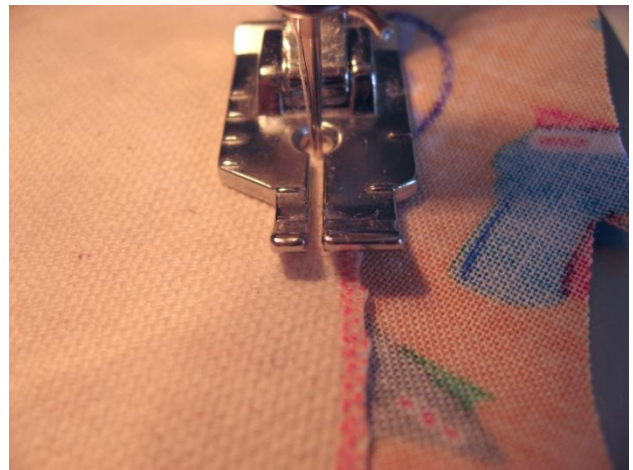
Place your pattern piece on top of the canvas and trace.



Place the canvas on the wrong side of the fabric and pin in place.

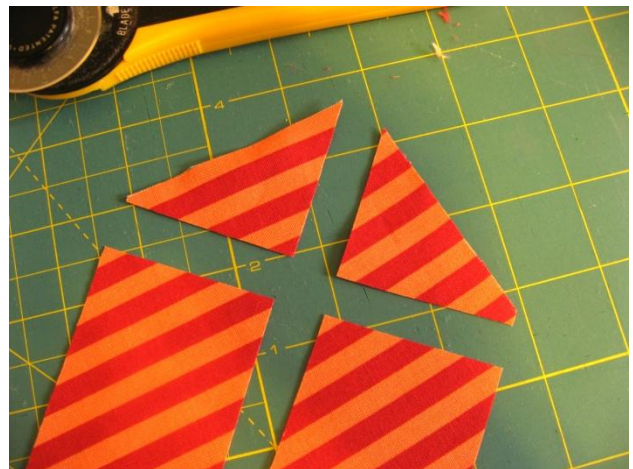


Machine baste around the perimeter close to the edge (less than 5/8"). Do this to all three cushion pieces.



**Make the Piping:**

Cut fabric *on the bias* in 2" wide strips. (Don't use straight grain or your piping will be lumpy and distorted!) Each strip will need to be 42" long, so you will probably need to piece them together to create strips that are long enough. To do this, cut off the pointy ends of the bias strips.



Line them up at the corners, and sew where indicated.



Trim off excess fabric at the seams and iron open.

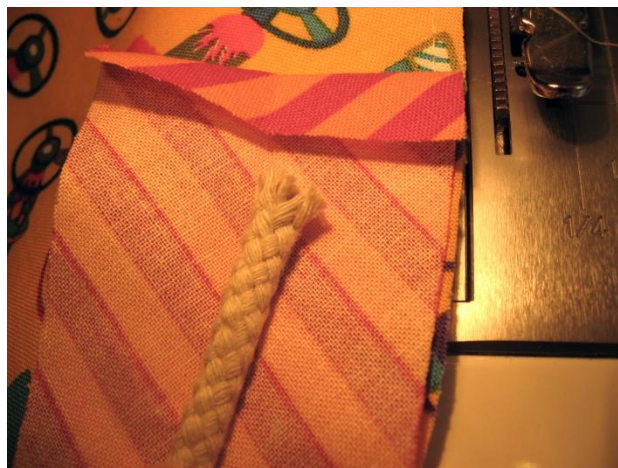


Iron the bias trim down the middle lengthwise. Fold and iron down one end of the bias trim about 1/2" and place the cord into it as pictured.



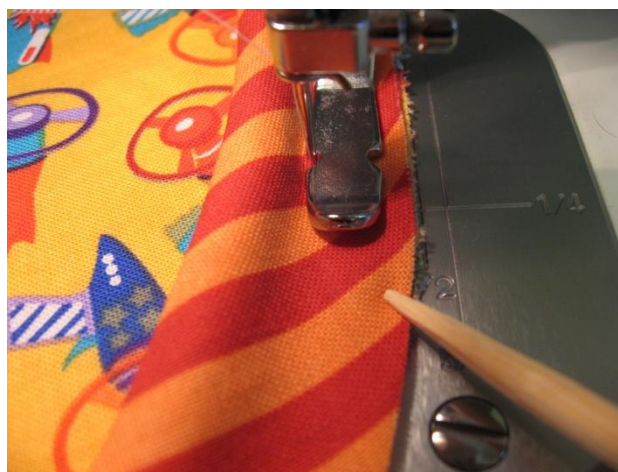
### **Attach the Piping:**

The cord should sit about 1" down from the folded end of the bias trim.



From this point on, you will need to use a zipper foot.

Fold the piping in half and line up its raw edge along the raw edge of the front panel. You will be attaching it to the right side of the fabric. Start sewing about 2" down from the top of the piping.



Instead of pinning, I use a skewer to hold things in place as I go. Use the 1/2" guide on the sewing plate as your guide. At this point, you are just basting, so there is no need to get too close to the cord.

Stop sewing about 1" shy of the end. Remove your sewing from the machine and trim the end of the cord so that it meets up with the beginning of the cord. Use a piece of tape to secure both ends together; you may also stitch them together by hand. Tuck the end of the bias tape into the beginning of it (which is folded over). Make sure everything is lined up and tucked in, and sew it all down.

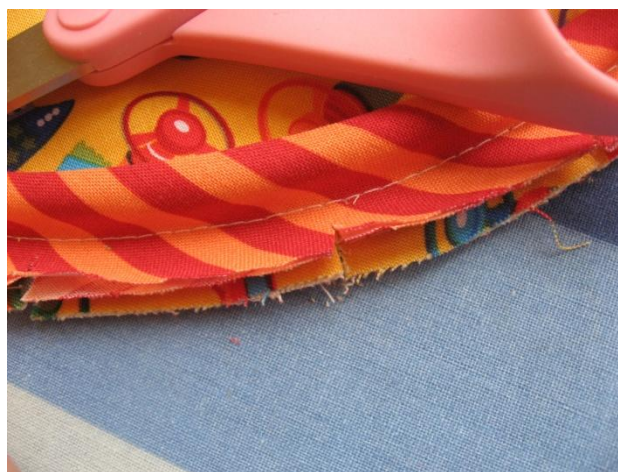


This is how it should look.



Snip in the seam allowance (all layers) to allow ease when sewing. Be careful not to cut the stitching.

Attach piping to the back panel as well. (The side panel is the only one that won't have piping.)



**Attach the Side Panel:**

Line up the side panel with the edge of the front panel. Start sewing about 2" down from the top. This is where the skewer really comes in handy. Use the point of the skewer to score along the edge of the cord. This not only pushes the cord into position, but it also enables you to steer better and get tight up against the cord. You will be sewing a 5/8" seam. This will hide the basting stitches from earlier.



When you've sewn around the perimeter, remove the pieces from the machine and line up the edges for a custom fit. Do this by marking a straight line on both ends of the panel where they should be sewn together and pin them in place.



Back at the machine, sew along the line, removing the pins as you go. The zipper foot allows you to get close to the piping. (Note how the front panel of the cushion is folded to the left of the needle.)



Trim off the excess seam allowance, iron open, and sew along the piped edge to ensure that it's completely closed.



**Attach the Bottom Panel:**

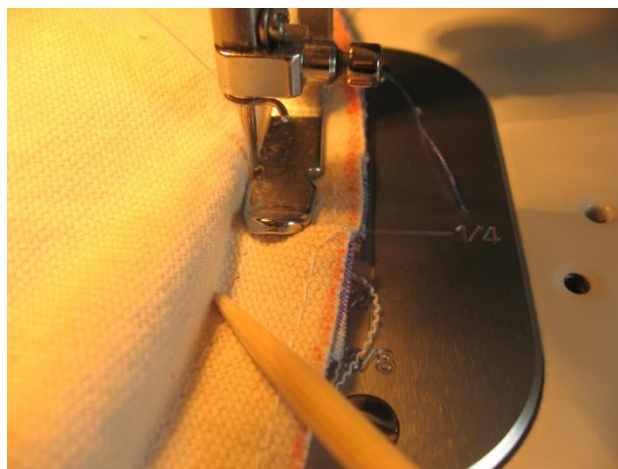
Once again, snip along the seam allowance for ease.



Place the panel right side down and pin in place. Use a pen or pin to mark where you will leave a 5” opening for turning right side out and stuffing.



Stitch close to the piping using a 5/8” seam allowance around the perimeter.



Turn the pillow right side out and stuff. Make sure the stuffing is evenly distributed into all the nooks and crannies.



Stitch the opening shut. I have used the ladder stitch.



When pulled tight, it is practically invisible!♦

