

Adult-Sized Bean Bag Chair

Prepared by Joanna Armour (www.stardustshoes.blogspot.com). For personal use only.



Use a 5/8" seam allowance unless otherwise noted.

Gather Materials:

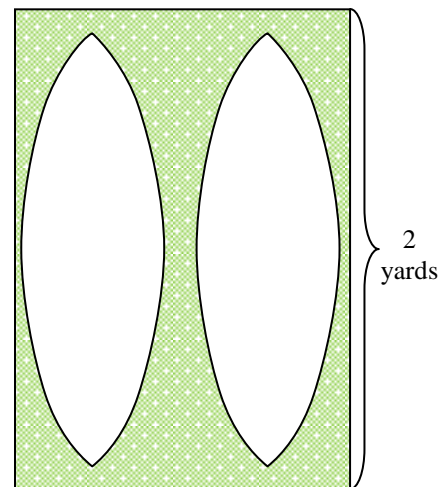
- 6 yards of fabric for the inner lining
- 6 yards of fabric for the outside cover (I used 3 coordinating fabrics, 2 continuous yards of each)
- Scraps of coordinating fabric for the appliqué
- 30" of 3/4" wide hook and loop tape
- Bean bag pellets (I used three 100 liter bag of recycled polystyrene pellets)
- The pattern diagram at the end of this tutorial

The inside lining and outside cover are made the same way except for the closure. Pictures in the tutorial are of the outside cover.

1) Cut the pieces:

Follow the diagram (on the last page of this tutorial) to draft the pattern piece.

The bean bag chair is made up of six panels. Each continuous 2 yards of fabric will yield 2 panels, with a bit left over.



Cut six panels. Figure out how you want your panels organized for the bean bag chair cover.

You'll be sewing your panels in groups of three.



2) Sew the panels:

With right sides facing, sew two panels together along one side. You'll want to start and stop your stitching at approximately 5/8" from the top and bottom points.

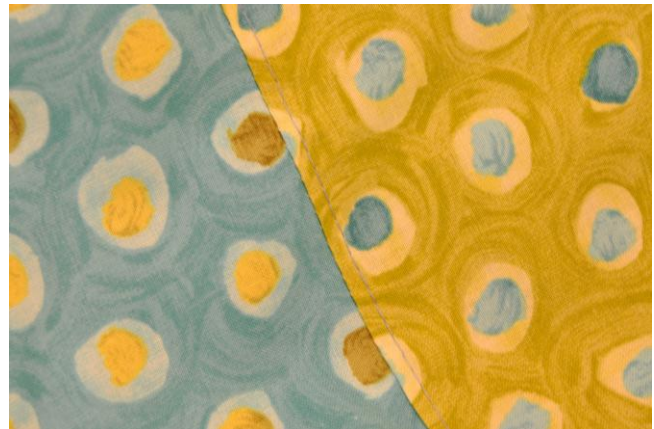
Iron the seams in one direction. Do NOT iron them open, as this creates a weak seam. If you have a serger, use it now. If not, don't worry about it.



I like to reinforce the stitching by topstitching the ironed seam in place.

Sew the second and third panels together along one side. You now have half of a bean bag chair!

Set this aside and sew the three remaining panels the same way.



Now you'll attach the two halves. With right sides facing, sew the third and fourth panels together. It can get a bit bulky at the points, but don't worry about making them perfect, as they will be covered up later anyway.



3) Create the closure:

The outer cover will use a hook and loop closure to allow for easy removal for laundering. The inner cover needs to be closed in the following way: Sew the first and sixth panels together leaving a ten inch opening for turning right side out and for filling. Apply the appliqués (step 4), then fill. After filling, it should be hand-stitched closed.

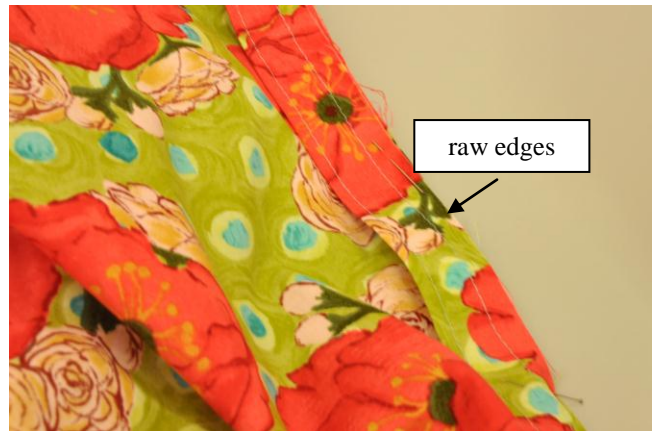


Cut a strip of fabric 32" x 2-1/2" long. Fold down both ends 1/2" and iron them down. Then fold the entire length of the strip in half and iron it.

The loop tape is 30" long. Mark its center at 15" and line that up with the center of the strip. Place it closer to the folded side of the strip and sew around the perimeter of the loop tape to attach it to the strip.



Line up the center of the strip with the center of the panel side where it will be attached. The loop tape should be facing down and the raw edges should be together. Pin in place and sew using a $\frac{1}{4}$ " seam allowance. Reinforce at the beginning and end by backstitching.



Fold the strip over to the other side of the panel so that the loop tape is now facing up. Finger press it along the edge and sew in place, backstitching when you start and stop.



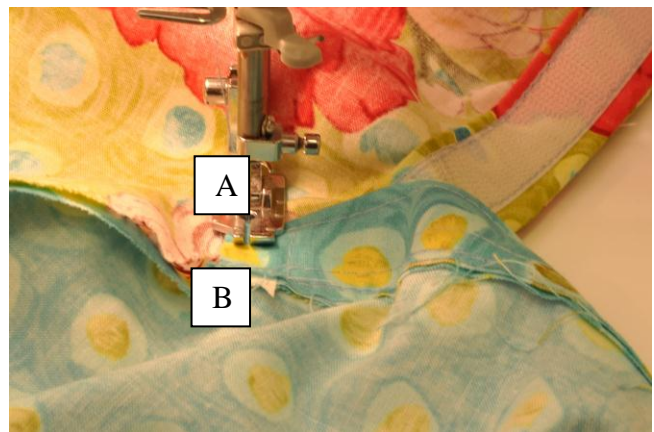
For the other panel, do the same thing—create the strip, attach the hook tape, center it, pin it in place and sew with hook tape facing down.



Instead of turning it to the other side of the panel, however, the hook tape needs to remain facing up. Make it behave by finger pressing the seam so that it lies under the panel. Topstitch it in place.



Make sure the bean bag cover is still inside out. Attach the hook and loop tape together (not all the way down, just at the top, since you'll need to get through the opening to sew!), and sew the ends of the strips together from A to B. (I like to sew an X with a square around it for extra strength.) Do the same for the other end.



Remove the fabric from the machine and readjust so that you can finish closing up the bean bag cover. Turn the cover right side out.

4) Create and attach the appliqué:

The points on the top and bottom of the cover may or may not line up, but that doesn't really matter because they need to be reinforced anyway with a sturdy appliqué. For the appliqué you'll need one piece of fabric for the top, one for the bottom and iron-on interfacing.



Iron the interfacing to the back side of the top piece following the manufacturer's directions.

Place the top and bottom pieces right sides together.

Stitch around the circle and pink the edges.



Carefully pull the two fabric layers apart and cut a slit in the bottom piece. Do not cut through any stitching. Turn the circle right side out through the slit.



Press it flat. You may need to fiddle with it a bit to get the edges smooth.



Place it on top of the bean bag cover where all the points meet. Use a sewing needle to hand baste it in place. Each panel should have one large pleat. Take special care to ensure that the appliqué lays flat.



Stitch by hand or machine around the perimeter of the appliqué.

Attach another appliqué to the bottom in the same way.

Insert the filled liner in the cover, and close it up. This part is a two person job. If you want it to be a one person job, insert the empty liner into the cover, making sure you can still access the opening. Then fill it with pellets, stitch it shut, and seal up the outer cover. ♦



Diagrams for panel piece and
applique piece. (not to scale)

