

michael miller FABRICS

TRAIL MARKERS

SIZE: 62"W x 62"H • LEVEL: BEGINNER • PATTERN BY: NATALIE CRABTREE • TRAILHEAD ADVENTURE FABRIC COLLECTION
PATTERN AVAILABLE ON: WWW.MICHAELMILLERFABRICS.COM



THIS IS A DIGITAL REPRESENTATION OF THE QUILT TOP, FABRIC MAY VARY.

PLEASE NOTE: BEFORE BEGINNING YOUR PROJECT, CHECK FOR ANY PATTERN UPDATES AT MICHAELMILLERFABRICS.COM'S FREE PROJECTS SECTION.

p.212.704.0774 | info@michaelmillerfabrics.com | www.michaelmillerfabrics.com



TRAIL MARKERS



BACKGROUND

CX9316

Sand

1 1/4 yards



FABRIC A

DCX12381

Bigfoot Adventure Brown

7/8 yard



FABRIC B

DCX12382

Sasquatch Tan

1 5/8 yards

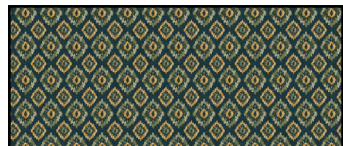


FABRIC C

DCX12384

Outdoor Plaid Tan

7/8 yard

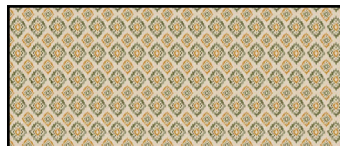


FABRIC D

DCX12385

Mountain Ikat Spruce

1/4 yard



FABRIC E

DCX12385

Mountain Ikat Tan

1/4 yard

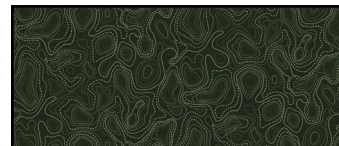


FABRIC F

DCX12387

Bigfoot Toile Olive

1/4 yard



FABRIC G

DCX12388

Topography Map Forest

1 1/2 yards

(includes binding)

BACKING:

4 yards

BATTING:

70" x 70"



TRAIL MARKERS

WOF = Width of Fabric, BG = Background, RST = Right Sides Together,

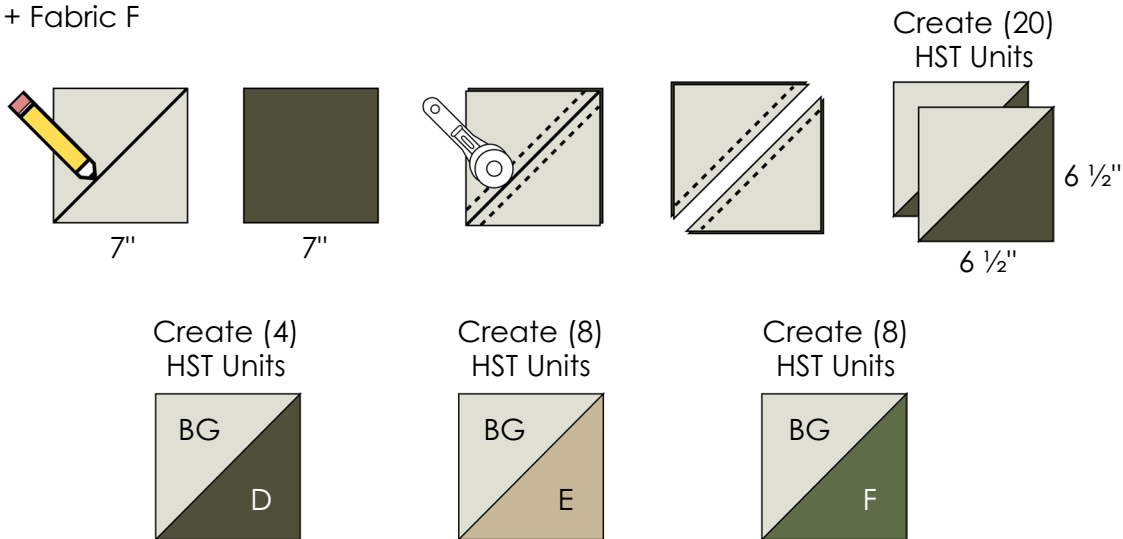
HST = Half Square Triangle, SNF = Stitch and Flip

KEY	CUTTING INSTRUCTIONS
BG	<ul style="list-style-type: none"> • Cut (2) 7" x WOF strips. Subcut (10) 7" squares for HST Unit Assembly. • Cut (2) 6 1/2" x WOF strips. Subcut (4) 6 1/2" x 12 1/2" rectangles for Quilt Assembly. • Cut (6) 1 1/2" x WOF strips. Piece strips for length using diagonal seams. Subcut the following for Quilt Assembly: <ul style="list-style-type: none"> ◦ (2) 1 1/2" x 48 1/2" Side Border 1. ◦ (2) 1 1/2" x 50 1/2" Top/Bottom Border 1.
A	<ul style="list-style-type: none"> • Cut (2) 12 1/2" x WOF strips. Subcut (4) 12 1/2" squares for Quilt Assembly.
B	<ul style="list-style-type: none"> • Cut (7) 5 1/2" x WOF strips. Piece strips for length using diagonal seams. From the long strip, subcut the following for Quilt Assembly: <ul style="list-style-type: none"> ◦ (2) 5 1/2" x 52 1/2" Side Border 3. ◦ (2) 5 1/2" x 62 1/2" Top/Bottom Border 3. • Using the remaining yardage, subcut (1) 12 1/2" square for Quilt Assembly.
C	<ul style="list-style-type: none"> • Cut (2) 12 1/2" x WOF strips. Subcut (4) 12 1/2" squares for Square-in-a-Square Unit Assembly.
D	<ul style="list-style-type: none"> • Cut (1) 7" x WOF strip. Subcut (2) 7" squares for HST Unit Assembly.
E	<ul style="list-style-type: none"> • Cut (1) 7" x WOF strip. Subcut (4) 7" squares for HST Unit Assembly.
F	<ul style="list-style-type: none"> • Cut (1) 7" x WOF strip. Subcut (4) 7" squares for HST Unit Assembly.
G	<ul style="list-style-type: none"> • Cut (3) 6 1/2" x WOF strips. Subcut (16) 6 1/2" squares for Square-in-a-Square Unit Assembly. • Cut (6) 1 1/2" x WOF strips. Piece strips for length using diagonal seams. Subcut the following for Quilt Assembly: <ul style="list-style-type: none"> ◦ (2) 1 1/2" x 50 1/2" Side Border 2. ◦ (2) 1 1/2" x 52 1/2" Top/Bottom Border 2. • Cut (7) 2 1/4" x WOF strips for binding.

TRAIL MARKERS

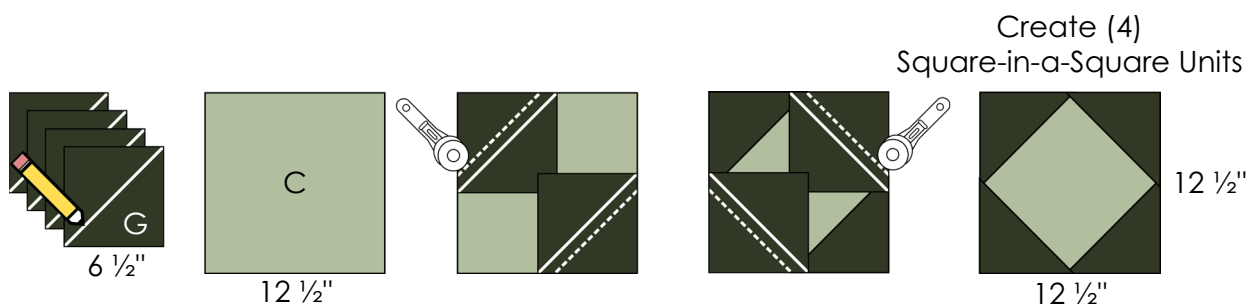
HST Unit Assembly:

1. Draw a diagonal line on the wrong side of (10) 7" BG squares.
2. Place each 7" BG square with 7" squares cut from Fabrics D, E and F, RST and edges aligned. There should be (10) pairs of squares.
3. Sew a $\frac{1}{4}$ " away from both sides of the drawn diagonal line on each set of squares. Then, cut along the drawn diagonal line on each set of squares creating (20) HST Units.
4. Trim HST Units to measure $6\frac{1}{2}$ " x $6\frac{1}{2}$ " unfinished.
5. Reference the following guide to ensure the correct quantity of HST Units have been created in each colorway. Set HST Units aside for Quilt Assembly.
 - a. (4) BG + Fabric D
 - b. (8) BG + Fabric E
 - c. (8) BG + Fabric F



Square-in-a-Square Unit Assembly:

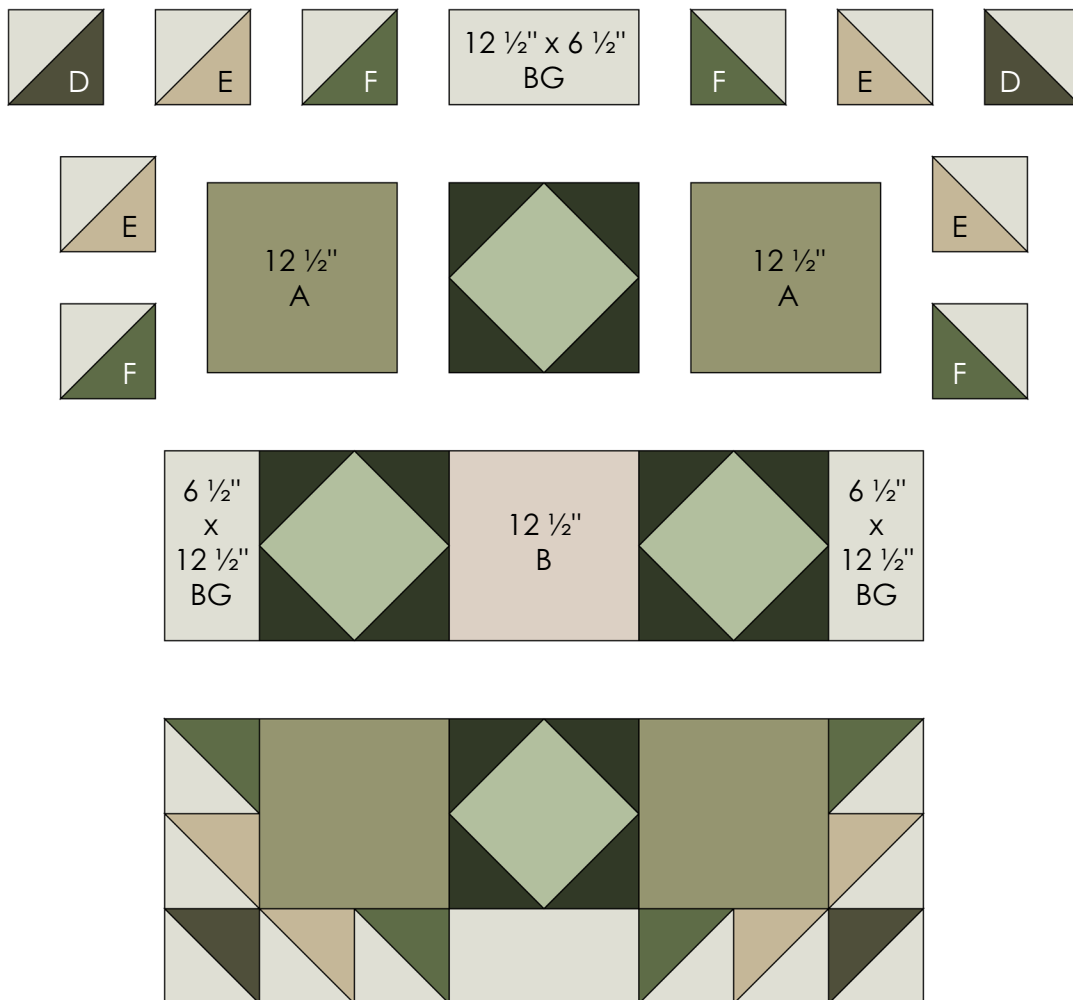
6. Draw a diagonal line on the wrong side of (16) $6\frac{1}{2}$ " Fabric G squares.
7. Place (1) $6\frac{1}{2}$ " Fabric G square onto (2) opposite corners of (4) $12\frac{1}{2}$ " Fabric C squares, RST and edges aligned. Note the orientation of the drawn diagonal line on the wrong side of each Fabric G square.
8. Sew along the drawn diagonal lines. Then, trim excess corner fabric to a $\frac{1}{4}$ ". Press toward the corners.
9. Repeat SNF techniques to attach (1) $6\frac{1}{2}$ " Fabric G square to the remaining corners of each $12\frac{1}{2}$ " Fabric C square to create (4) Square-in-a-Square Units. Trim the Square-in-a-Square Units to measure $12\frac{1}{2}$ " x $12\frac{1}{2}$ " unfinished.



TRAIL MARKERS

Quilt Assembly:

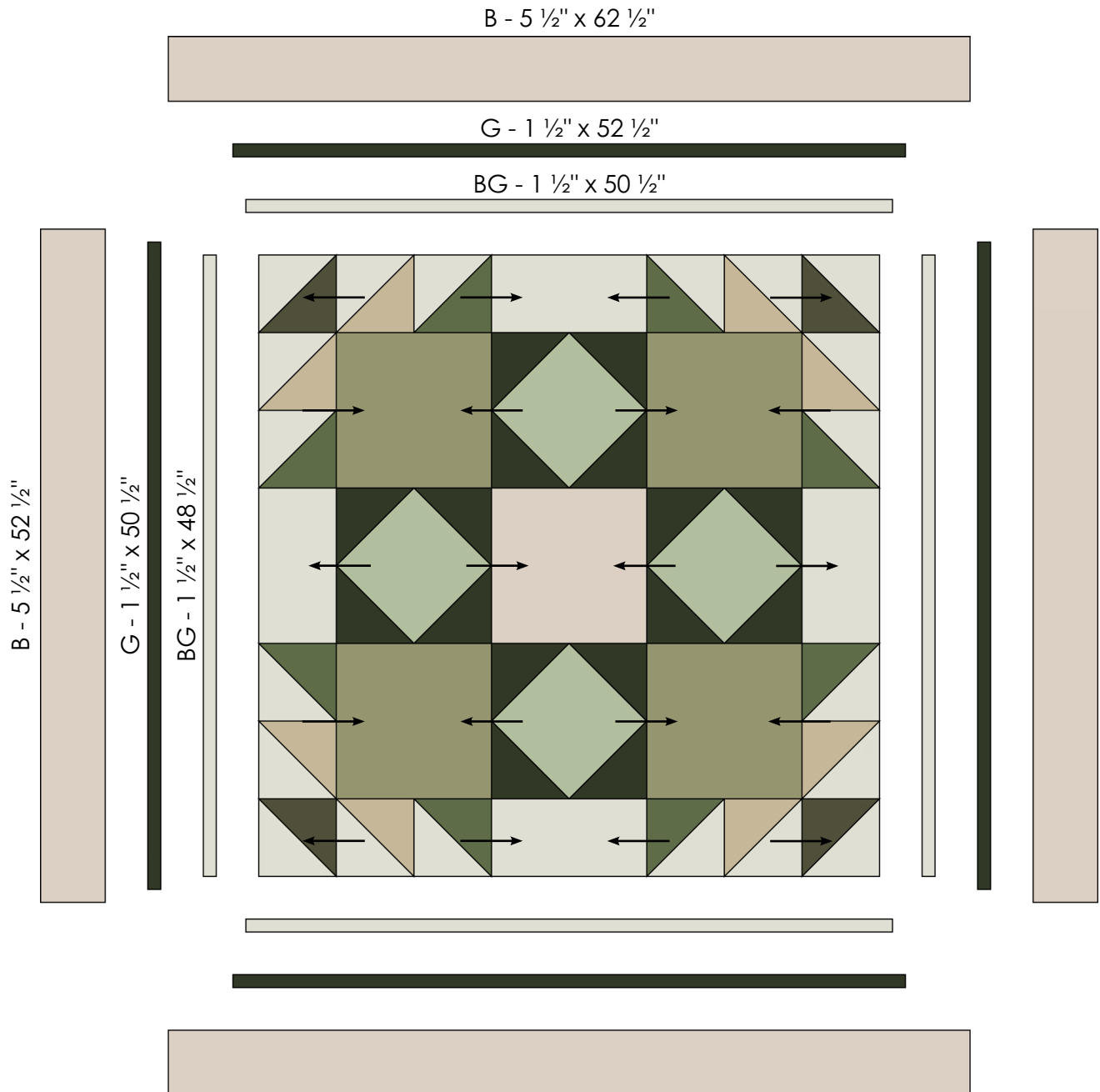
10. Arrange HST Units, Square-in-a-Square Units and assorted cut pieces from BG, Fabric A and Fabric B to form the quilt top center. Reference the diagram for the rotation of HST Units and placement of colorways. Additionally, reference the diagram for the size and placement of cut pieces from BG, Fabric A and Fabric B.
11. Sew the quilt top center together in (5) individual horizontal rows. Arrows on Page 5 indicate pressing instructions.
12. Sew horizontal rows together, using pins to align and nestle seams. Press seams flat. The quilt top center should measure 48 1/2" x 48 1/2" unfinished.



13. Attach Borders 1-3 in numerical order. For each border, attach Side Borders first followed by Top/Bottom Borders. The border measurements provided are exact based on the quilt's measurements. It is recommended to use pins to align borders with the quilt top center to avoid stretching or shifting. Press outward after attaching each border. Reference the following guide for the correct border measurements:

- a. **Border 1:** 1 1/2" x 48 1/2" Side Borders and 1 1/2" x 50 1/2" Top/Bottom Borders
- b. **Border 2:** 1 1/2" x 50 1/2" Side Borders and 1 1/2" x 52 1/2" Top/Bottom Borders
- c. **Border 3:** 5 1/2" x 52 1/2" Side Borders and 5 1/2" x 62 1/2" Top/Bottom Borders

TRAIL MARKERS



Finishing the Quilt:

14. Sandwich the quilt top with batting and backing. Baste quilt layers together using your preferred method.
15. Quilt as desired.
16. Bind quilt using (7) 2 1/4" x WOF Fabric G strips.