

michael miller FABRICS

# Galleria

SIZE: 39"W x 41"H • LEVEL: CONFIDENT BEGINNER • PATTERN BY: PROJECT HOUSE 360



THIS IS A DIGITAL REPRESENTATION OF THE QUILT TOP, FABRIC MAY VARY.

**PLEASE NOTE:** BEFORE BEGINNING YOUR PROJECT, CHECK FOR ANY PATTERN UPDATES AT [MICHAELMILLERFABRICS.COM](http://MICHAELMILLERFABRICS.COM)'S FREE PROJECTS SECTION.

p.212.704.0774 | [info@michaelmillerfabrics.com](mailto:info@michaelmillerfabrics.com) | [www.michaelmillerfabrics.com](http://www.michaelmillerfabrics.com)



## 1/4" Seam Allowance Check

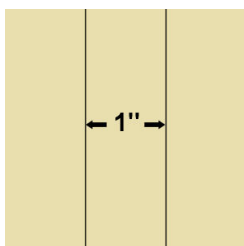
To check if your seam is accurate, cut three 1 1/2" x 3" pieces from scrap fabric.

Sew the pieces together along the 3" side, using what you believe is a 1/4" seam.

Press away from the center piece.

Measure.

The center piece should be exactly 1" wide.



If, when you measure, the center is less than 1", your seam allowance is too large. You need to move the needle to the right.

If it's more than 1", your seam allowance is too small and you need to move the needle to the left.

Consult your machine's owner's manual for instructions on moving your needle position.

Repeat this check until your center strip measures correctly.



**FABRIC A**

DDC12290 tan  
one full repeat



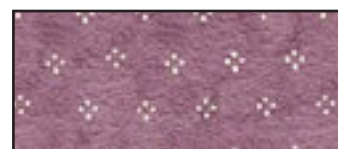
**FABRIC B**

DDC12288 beige  
1/2 yard



**FABRIC C**

DDC12284 butter  
1/4 yard



**FABRIC D**

DDC12288 purple  
1/4 yard



**FABRIC E**

DDC12287 beige  
1/4 yard



**FABRIC F**

DDC12288 mint  
3/4 yard



**FABRIC G**

DDC12284 white  
1/4 yard



**FABRIC H**

DDC12289 multi  
1 1/2 yards



**BACKING**

DDC12285 multi  
2 3/4 yards

**BATTING**

47" x 49"

KEY	CUTTING INSTRUCTIONS	WOF=width of fabric
A	(6) 7 $\frac{1}{2}$ " x 10 $\frac{1}{2}$ " fussy cut, centering on motif	
B	(3) 2" x WOF. Subcut: (12) 2" x 7 $\frac{1}{2}$ " rectangles (1) 4 $\frac{3}{4}$ " x WOF. Subcut: (6) 4 $\frac{3}{4}$ " squares (4) 1 $\frac{1}{2}$ " x WOF. Subcut: (4) 1 $\frac{1}{2}$ " x 30 $\frac{1}{2}$ " rectangles	
C	(4) 4 $\frac{3}{8}$ " squares	
D	(3) 4 $\frac{3}{4}$ " squares	
E	(4) 4 $\frac{3}{8}$ " squares	
F	(5) 2 $\frac{1}{2}$ " x WOF for binding (3) 4 $\frac{3}{4}$ " squares	
G	(4) 4 $\frac{3}{8}$ " squares	
H	(4) 5" x 45" fussy cut, centering on motif, lengthwise on fabric	

## Block A:

Make 3

1. Cut one fabric B and one fabric D 4 $\frac{3}{4}$ " squares twice diagonally. Cut two fabric C 4 $\frac{3}{8}$ " squares once diagonally.
2. Stitch the 4 $\frac{3}{4}$ " triangles together in pairs. Add one fabric C 4 $\frac{3}{8}$ " triangle. Square to 4". Make four units.
3. Stitch the units together as shown to complete the block. Square to 7 $\frac{1}{2}$ ".
4. Add one fabric B 2" x 7 $\frac{1}{2}$ " rectangle to the top and bottom of the block. Block should be 7 $\frac{1}{2}$ " x 10 $\frac{1}{2}$ ".
5. Repeat steps 1-4 using two fabric G, then two fabric E 4 $\frac{3}{8}$ " squares.

Step 2



Steps 3-4



Step 5



## Block B:

Make 3

6. Make as for block A, substituting the fabric F  $4\frac{3}{4}$ " square for the fabric D squares.



## Assembly:

7. Use the assembly diagram on page 5 to combine the blocks with the fabric A  $7\frac{1}{2}$ " x  $10\frac{1}{2}$ " rectangles.
8. Stitch one fabric B  $1\frac{1}{2}$ " x  $30\frac{1}{2}$ " rectangle to the left- and right-hand sides of the quilt.
9. Stitch one fabric B  $1\frac{1}{2}$ " x  $30\frac{1}{2}$ " rectangle to the top and bottom of the quilt.
10. Stitch the fabric H 5" x 45" rectangles to the quilt, mitering corners.

## Finishing:

11. Layer, baste and quilt as desired.
12. Bind with five fabric F  $2\frac{1}{2}$ " x WOF strips.



## Assembly Diagram

