

# CIRCUS TENTS

SIZE: 70"W x 70"H • LEVEL: INTERMEDIATE • PATTERN BY: NATALIE CRABTREE • A NIGHT AT THE CIRCUS FABRIC COLLECTION  
PATTERN AVAILABLE ON: [WWW.MICHAELMILLERFABRICS.COM](http://WWW.MICHAELMILLERFABRICS.COM)



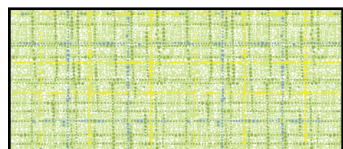
THIS IS A DIGITAL REPRESENTATION OF THE QUILT TOP, FABRIC MAY VARY.

**PLEASE NOTE:** BEFORE BEGINNING YOUR PROJECT, CHECK FOR ANY PATTERN UPDATES AT [MICHAELMILLERFABRICS.COM](http://MICHAELMILLERFABRICS.COM)'S FREE PROJECTS SECTION.

p.212.704.0774 | [info@michaelmillerfabrics.com](mailto:info@michaelmillerfabrics.com) | [www.michaelmillerfabrics.com](http://www.michaelmillerfabrics.com)



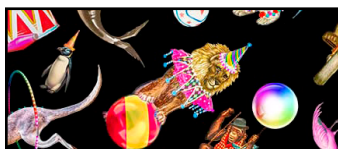
# CIRCUS TENTS



**BACKGROUND**

CX9316

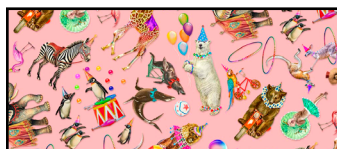
Lime  
4 yards



**FABRIC A**

DDC11963

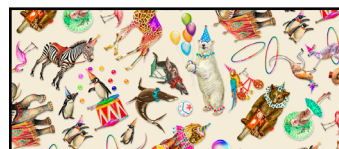
Circus Animals Black  
1 FQ



**FABRIC B**

DDC11963

Circus Animals Blush  
1 FQ



**FABRIC C**

DDC11963

Circus Animals Cream  
1 FQ



**FABRIC D**

DDC11965

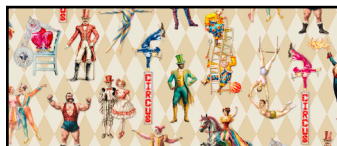
Magical Fireworks  
Indigo  
1 FQ



**FABRIC E**

DDC11968

Circus Crew Black  
1 FQ



**FABRIC F**

DDC11968

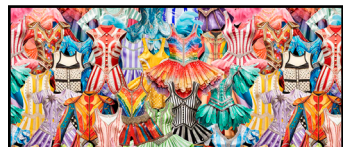
Circus Crew Tan  
1 FQ



**FABRIC G**

DDC11969

Penguin Parade Cream  
1 FQ



**FABRIC H**

DDC11970

Circus Costume  
Collage Multi  
1 FQ



**FABRIC I**

DDC11971

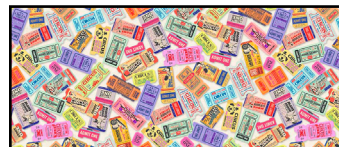
Party Hats Black  
1 FQ



**FABRIC J**

DDC11972

Admit One Black  
1 FQ



**FABRIC K**

DDC11972

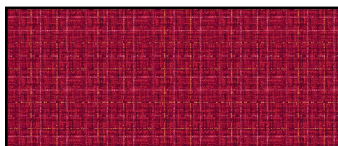
Admit One Cream  
1 1/8 yards  
(includes binding)



**FABRIC L**

DDC11974

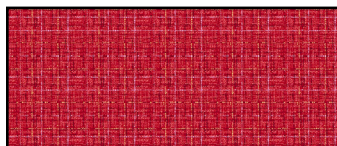
A Gradient Cloud Multi  
1 FQ



**FABRIC M**

CX9316

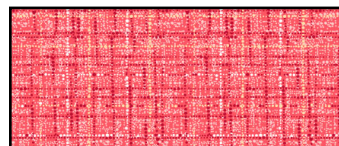
Currant  
1 FQ



**FABRIC N**

CX9316

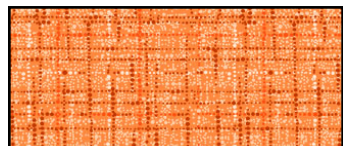
Cranberry  
1 FQ



**FABRIC O**

CX9316

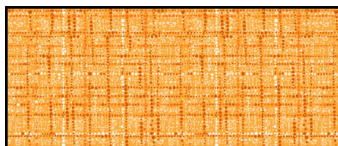
Rose  
1 FQ



**FABRIC P**

CX9316

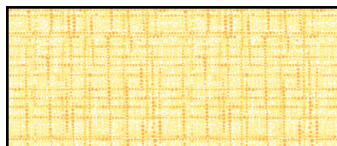
Tangerine  
1 FQ



**FABRIC Q**

CX9316

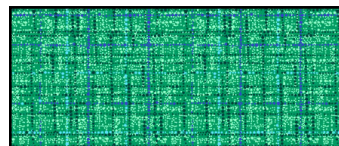
Marmalade  
1 FQ



**FABRIC R**

CX9316

Lemon  
1 FQ



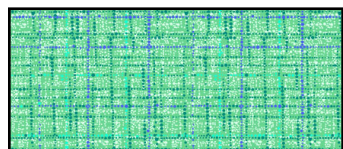
**FABRIC S**

CX9316

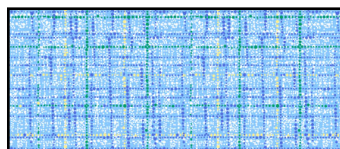
Teal  
1 FQ



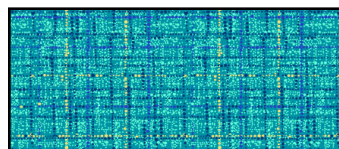
# CIRCUS TENTS



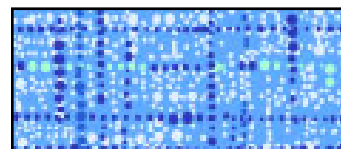
**FABRIC T**  
CX9316  
Seafoam  
1 FQ



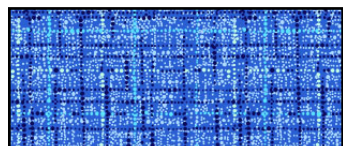
**FABRIC U**  
CX9316  
Ocean  
1 FQ



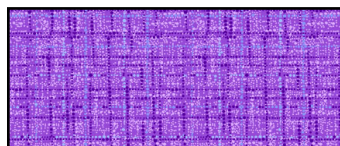
**FABRIC V**  
CX9316  
Caribbean  
1 FQ



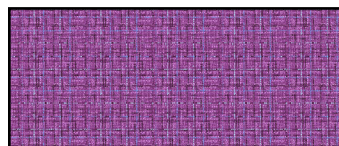
**FABRIC W**  
CX9316  
Cornflower  
1 FQ



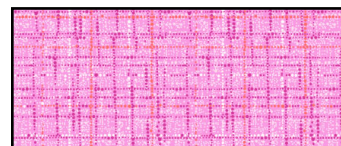
**FABRIC X**  
CX9316  
Cobalt  
1 FQ



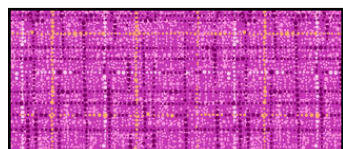
**FABRIC Y**  
CX9316  
Violet  
1 FQ



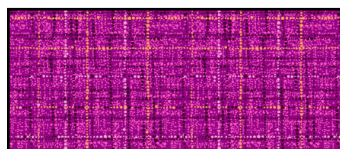
**FABRIC Z**  
CX9316  
Punch  
1 FQ



**FABRIC AA**  
CX9316  
Pink  
1 FQ



**FABRIC BB**  
CX9316  
Fuschia  
1 FQ



**FABRIC CC**  
CX9316  
Magenta  
1 FQ

**BATTING:**  
78" x 78"

**BACKING:**  
4 3/8 yards



# CIRCUS TENTS

WOF = Width of Fabric, BG = Background, FQ = Fat Quarter, RST = Right Sides Together, SNF = Stitch and Flip,  
HST = Half Square Triangle

KEY	CUTTING INSTRUCTIONS
<b>BG</b>	<ul style="list-style-type: none"> <li>• (3) 7 ¼" x WOF strips. Subcut (12) 7 ¼" squares; cut each square once diagonally to make (24) 7 ¼" HST for Circus Tent Blocks.</li> <li>• (5) 6 ½" x WOF strips. Subcut (26) 6 ½" squares for Star Blocks.</li> <li>• (2) 3" x WOF strips. Subcut (26) 3" squares for Star Blocks.</li> <li>• (4) 2 ½" x WOF strips. Subcut (52) 2 ½" squares for Star Blocks.</li> <li>• (8) 2" x WOF strips. Subcut the following for Star Blocks: <ul style="list-style-type: none"> <li>◦ (52) 2" x 3 ½" rectangles.</li> <li>◦ (52) 2" squares.</li> </ul> </li> <li>• (15) 2 ½" x WOF strips. Subcut the following for Quilt Assembly: <ul style="list-style-type: none"> <li>◦ (40) 2 ½" x 12 ½" sashing rectangles.</li> <li>◦ (16) 2 ½" cornerstone squares.</li> </ul> </li> <li>• (8) 1 ½" x WOF strips. Piece (2) strips for length using a diagonal seam. Repeat to create (4) long strips. Trim the following for Quilt Assembly: <ul style="list-style-type: none"> <li>◦ (2) 1 ½" x 68 ½" Side Borders.</li> <li>◦ (2) 1 ½" x 70 ½" Top/Bottom Borders.</li> </ul> </li> </ul>
<b>A - J and L</b>	<ul style="list-style-type: none"> <li>• From each fabric, cut (1) 12 ½" x 6 ½" rectangle for Circus Tent Blocks (<i>totaling (11) rectangles</i>). When cutting directional prints, please note that measurements are provided Width x Height. Reference the cover image and assembly diagrams for additional assistance.</li> </ul>
<b>K</b>	<ul style="list-style-type: none"> <li>• (8) 2 ¼" x WOF strips for binding.</li> <li>• (2) 3 ½" x WOF strips. Subcut (13) 3 ½" squares for Star Blocks.</li> <li>• (1) 2 ½" x WOF strip. Subcut (13) 2 ½" squares for Star Blocks.</li> <li>• Use the remaining yardage to cut (1) 12 ½" x 6 ½" rectangle for Circus Tent Blocks.</li> </ul>
<b>M - CC</b>	<ul style="list-style-type: none"> <li>• Cutting Instructions for Fabrics M-CC (<i>accent fabrics</i>) are provided during assembly for Circus Tent Blocks and Star Blocks. This will allow the quilter to combine colors for their own unique and scrappy quilt design!</li> </ul>



# CIRCUS TENTS

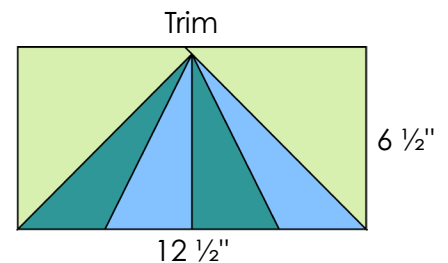
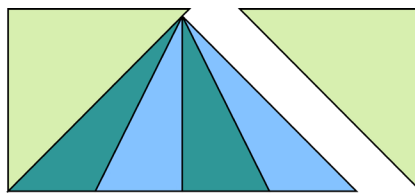
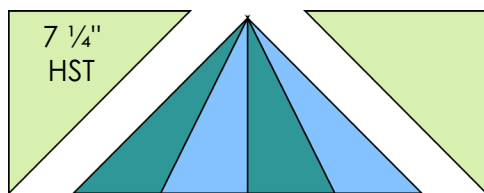
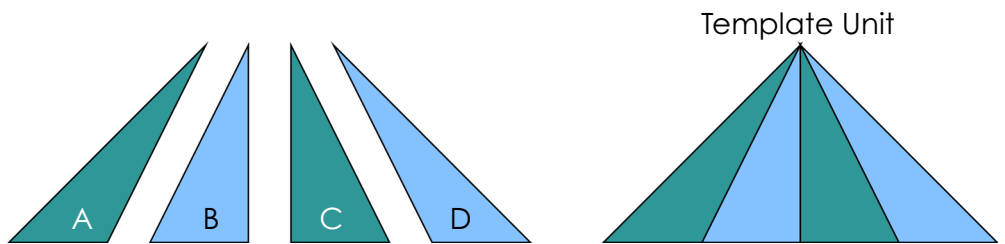
## Circus Tent Block Assembly:

*Designer Note: Quilters can opt to create Circus Tent Blocks exactly how they are featured in the cover image by following the fabric placement and combination guide after Step 8. Or, quilters can create their own unique fabric/color combinations. Ample yardage has been provided for both options.*

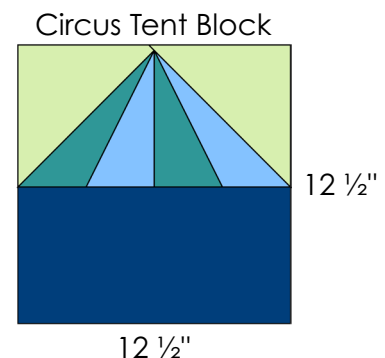
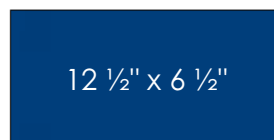
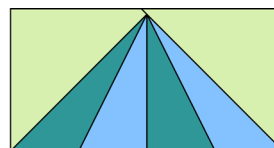
*Reference the following general assembly instructions for Circus Tent Blocks, and proceed using either exact fabric/color placement as shown after Step 8, or use random and unique fabric/color combinations. Cut Fabrics M-CC as you go.*

1. Arrange cut fabric Templates A-D (Fabrics M-CC) in alphabetical order moving from left to right. **Templates A and C should be from a matching fabric, and Templates B and D should be from a matching fabric.**
2. Sew Templates A-D together, using the blunted edges to assist with alignment. Press all seams in one direction to complete (1) Template Unit.
3. Align the longest edge of (1) 7 1/4" Background HST with (1) side of the Template Unit. Background HST's have been slightly oversized to allow for trimming. Evenly center the Background HST onto the side of the Template Unit, and pin in place if necessary.
4. Attach the 7 1/4" Background HST, and press outward.
5. Repeat to attach (1) 7 1/4" Background HST to the remaining side of the Template Unit.

6. Trim the top of the Circus Tent Block to measure 12 1/2" x 6 1/2" unfinished. **Ensure there is a 1/4" seam allowance between the point of the Template Unit and the top raw edge. Additionally, trim evenly from both sides of the top of the Circus Tent Block.**

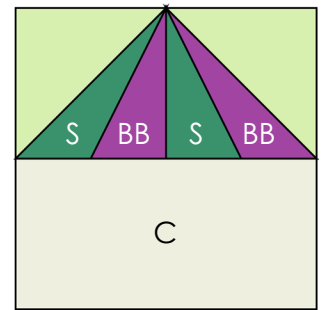
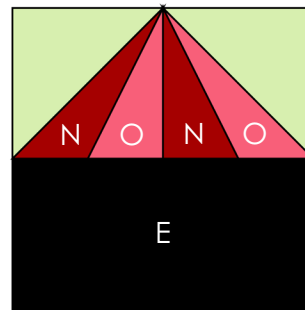
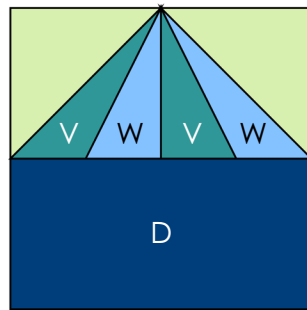
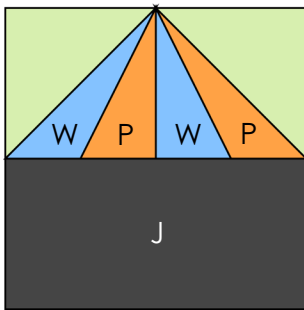
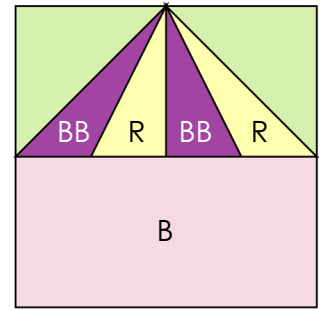
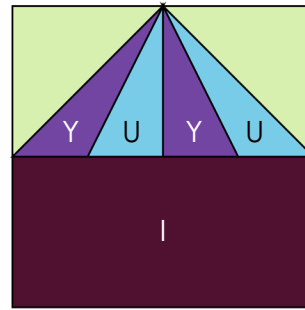
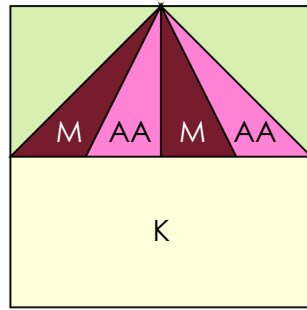
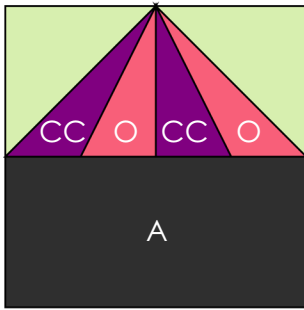
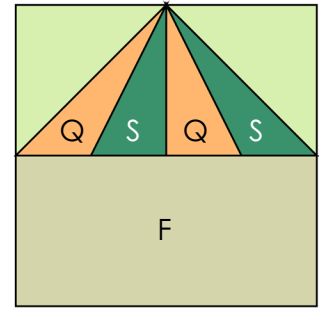
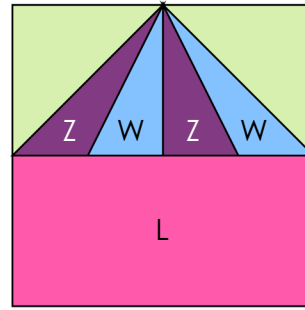
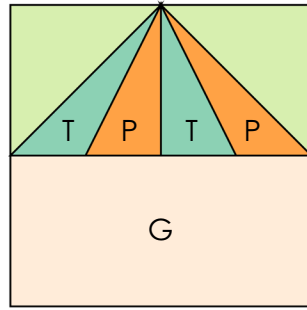
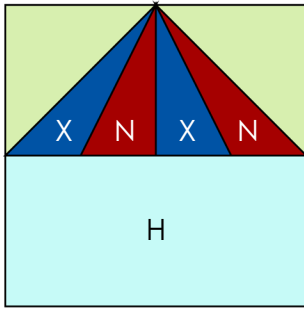


7. Sew (1) 12 1/2" x 6 1/2" rectangle from Fabrics A-L to the bottom of the unit completed in Step 6 to complete (1) Circus Tent Block. The Circus Tent Block should measure 12 1/2" x 12 1/2" unfinished.



# CIRCUS TENTS

8. Repeat to create a total of (12) Circus Tent Blocks. Reference the labeled diagrams below for fabric/color combinations. The fabric/color combinations featured below will match the cover image. Or, create your own random and unique fabric/color combinations. Cut Templates A-D from Fabrics M-CC as you go. **Templates A and C should be from a matching fabric, and Templates B and D should be from a matching fabric.** Fabrics M-CC will be used again for Star Blocks. Aim to conserve fabric as you cut templates.



Create (12) Circus Tent Blocks

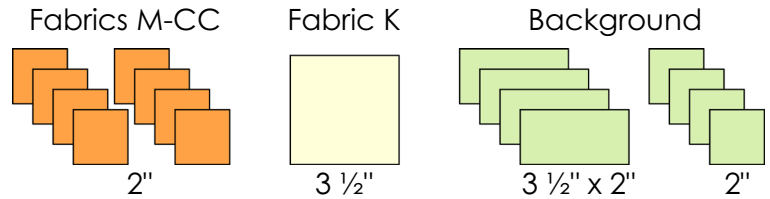


# CIRCUS TENTS

## Star Block Assembly:

9. To create (1) Sawtooth Star Unit, cut and gather the following pieces:

- Select (1) fabric/color from Fabrics M-CC. Cut the following:
  - (8) 2" squares.
- Gather the following:
  - (1) 3 ½" Fabric K square.
  - (4) 3 ½" x 2" Background rectangles.
  - (4) 2" Background squares.



10. Repeat to cut pieces from Fabrics M-CC to make a total of (13) Sawtooth Star Units. **Only (1) fabric/color from Fabrics M-CC is used in each Sawtooth Star Unit.** Pair the cut Fabric M-CC pieces with the Fabric K and Background pieces specified above to make sets.

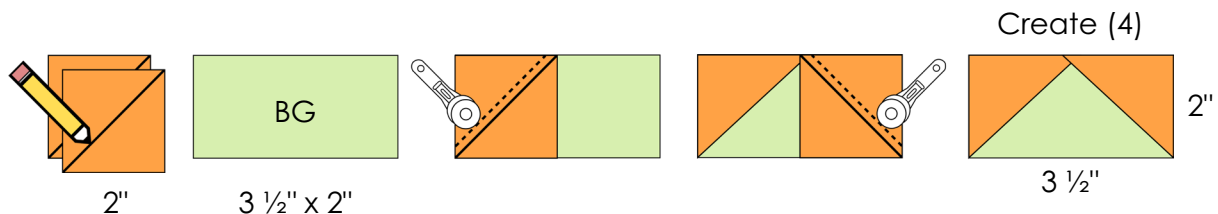
11. Select (1) set of cut pieces to begin.

12. Draw a diagonal line on the wrong side of (8) 2" squares from Fabrics M-CC.

13. Place (1) 2" square onto the corner of (4) 3 ½" x 2" Background rectangles, RST and edges aligned. Note the orientation of the drawn diagonal line in the diagram.

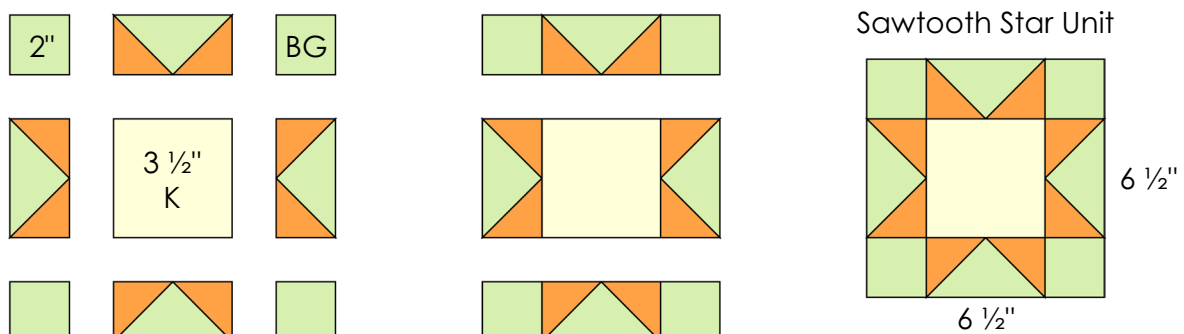
14. Sew along the drawn diagonal lines. Trim excess corner fabric to a ¼". Press toward the corners.

15. Repeat SNF techniques to attach an additional 2" square to the adjacent corner of each 3 ½" x 2" Background rectangle to complete (4) Flying Geese Units. The Flying Geese Units should measure 3 ½" x 2 ½" unfinished.



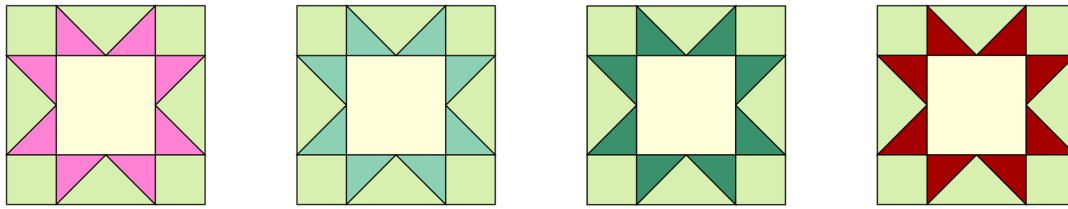
16. Arrange Flying Geese Units with the remaining pieces from the set (*reference Step 9*) to form (1) Sawtooth Star Unit.

17. Sew together, pressing seams away from Flying Geese Units. The Sawtooth Star Unit should measure 6 ½" x 6 ½" unfinished.



# CIRCUS TENTS

18. Repeat to create a total of (13) Sawtooth Star Units.



Create (13) Sawtooth Star Units

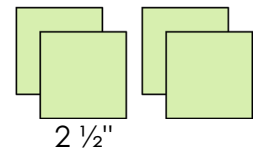
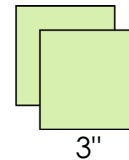
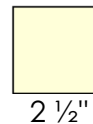
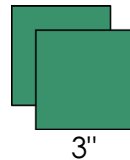
19. To create (1) Friendship Star Unit, cut and gather the following pieces:

- Select (1) fabric/color from Fabrics M-CC. Cut the following:
  - (2) 3" squares.
- Gather the following:
  - (1) 2 ½" Fabric K square.
  - (2) 3" Background squares.
  - (4) 2 ½" Background squares.

Fabrics M-CC

Fabric K

Background



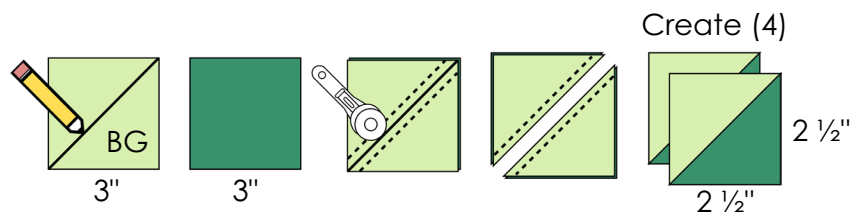
20. Repeat to cut pieces from Fabrics M-CC to make a total of (13) Friendship Star Units. **Only (1) fabric/color from Fabrics M-CC is used in each Friendship Star Unit.** Pair the cut Fabric M-CC pieces with the Fabric K and Background pieces specified above to make sets.

21. Select (1) set of cut pieces to begin.

22. Draw a diagonal line on the wrong side of (2) 3" Background squares.

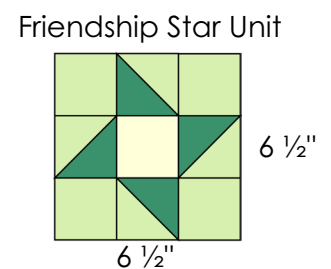
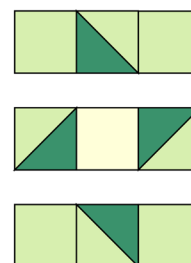
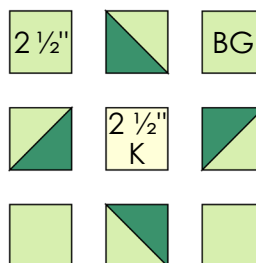
23. Place (2) 3" Background squares with (2) 3" squares from Fabrics M-CC, RST and edges aligned.

24. Sew a ¼" away from both sides of the drawn diagonal line on each set of squares. Then, cut along the drawn diagonal line on each set of squares making (4) HST Units.



25. Trim HST Units to measure 2 ½" x 2 ½" unfinished.

26. Arrange HST Units with the remaining pieces from the set (reference Step 19) to form (1) Friendship Star Unit.

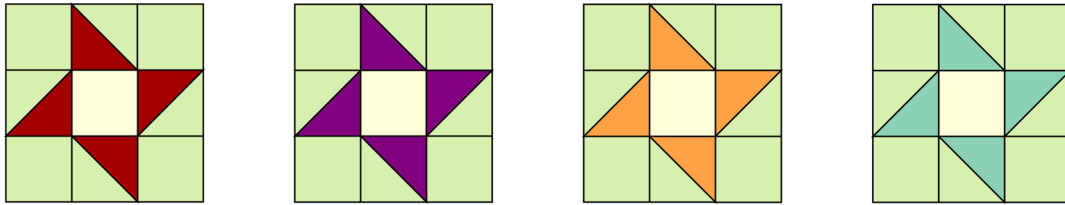


27. Sew together, pressing seams away from HST Units. The Friendship Star Unit should measure 6 ½" x 6 ½" unfinished.



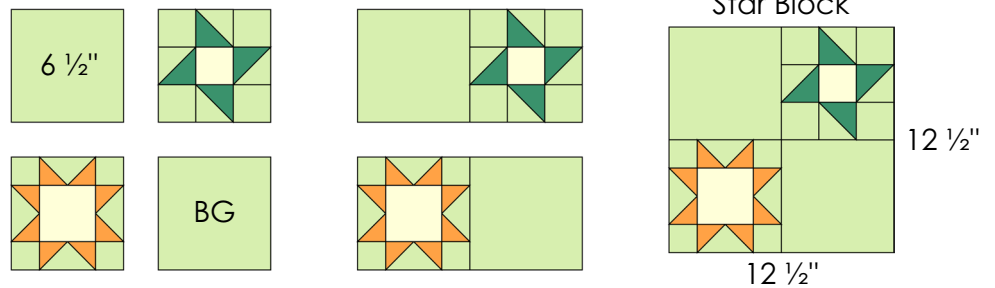
# CIRCUS TENTS

28. Repeat to create a total of (13) Friendship Star Units.



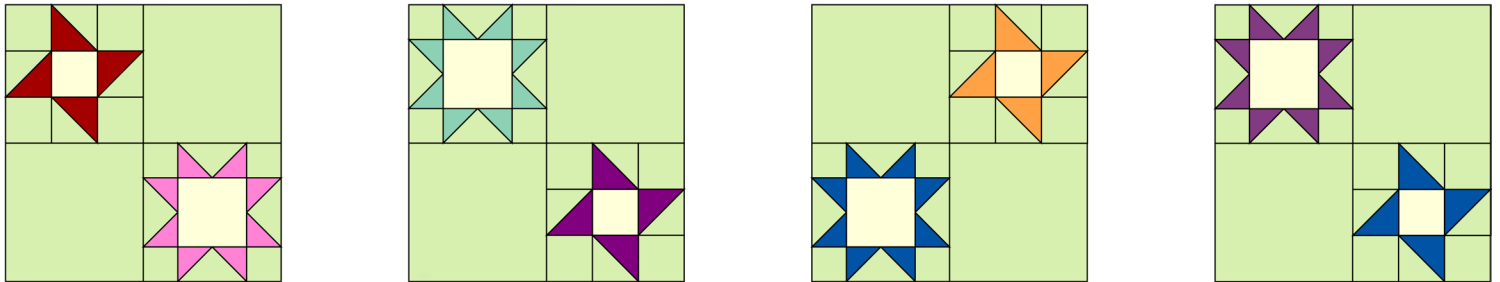
Create (13) Friendship Star Units

29. Randomly select (1) Sawtooth Star Unit and (1) Friendship Star Unit and arrange with (2)  $6\frac{1}{2}$ " Background squares to form (1) Star Block. The selected pieced units should offer color variety.



30. Sew together, pressing seams toward the Background squares. The Star Block should measure  $12\frac{1}{2}$ " x  $12\frac{1}{2}$ " unfinished.

31. Repeat to create a total of (13) Star Blocks, aiming for several unique fabric/color combinations.



Create (13) Star Blocks

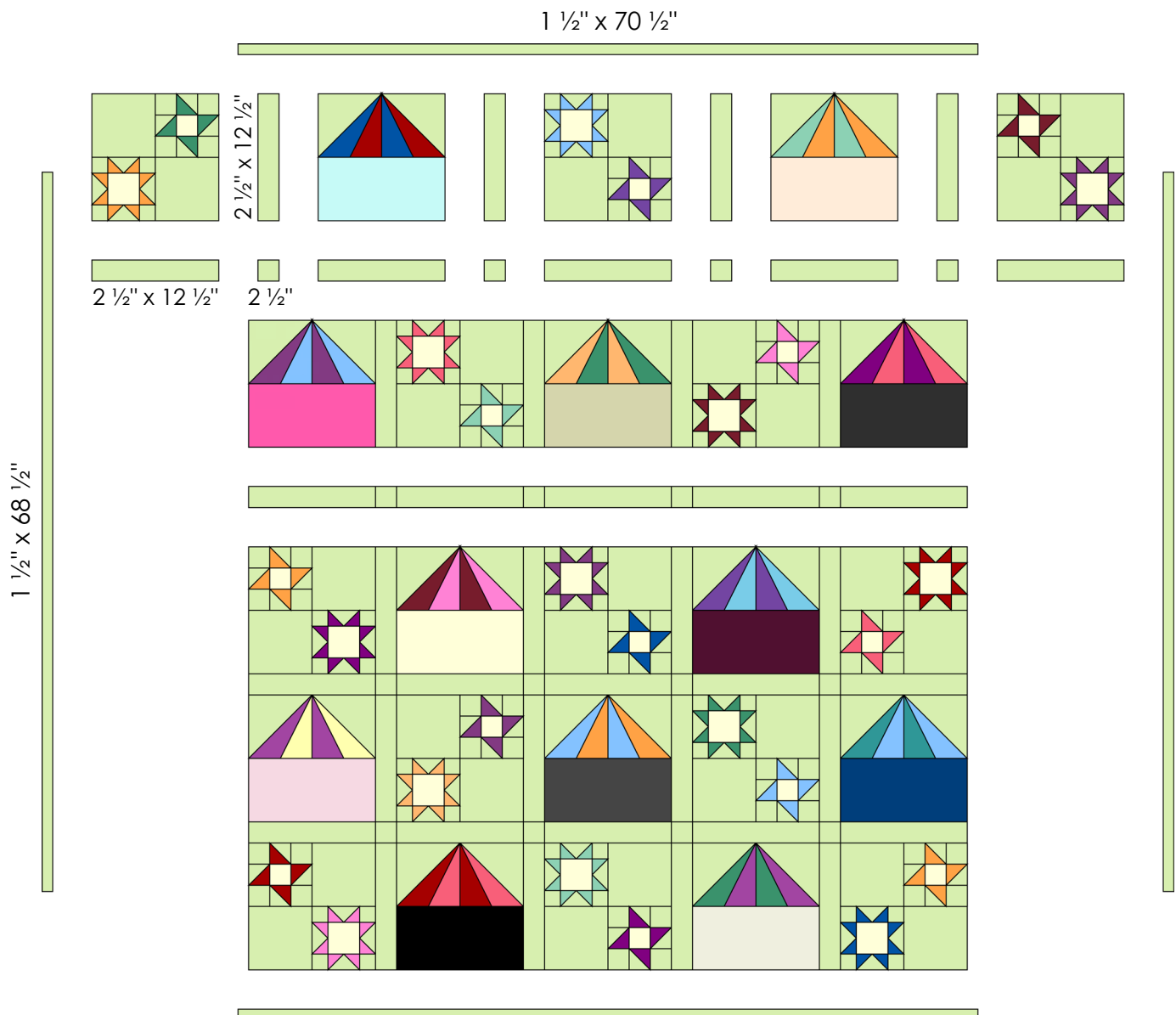
## Quilt Assembly:

32. Arrange Circus Tent and Star Blocks in a 5 x 5 grid, alternating between block types. If you created Circus Tent Blocks to match the cover image, reference the cover image for placement of each Circus Tent Block colorway. Additionally, note the rotation of the Star Blocks to vary the placement of Sawtooth Star Units and Friendship Star Units. Place (1)  $2\frac{1}{2}$ " x  $12\frac{1}{2}$ " sashing rectangle vertically in between each block.

33. Arrange sashing rows in between each block row. Each sashing row will contain (5)  $2\frac{1}{2}$ " x  $12\frac{1}{2}$ " sashing rectangles and (4)  $2\frac{1}{2}$ " cornerstone squares. (Designer Note: Sashing rectangles and cornerstone squares are cut from the same fabric. Cornerstones are used to assist the quilter with lining up blocks from row to row more accurately.)

# CIRCUS TENTS

34. Sew block rows together, pressing seams toward sashing rectangles. Block rows should measure  $68\frac{1}{2}$ " x  $12\frac{1}{2}$ " unfinished.
35. Sew sashing rows together, pressing seams toward sashing rectangles. Sashing rows should measure  $68\frac{1}{2}$ " x  $2\frac{1}{2}$ " unfinished.
36. Sew block and sashing rows together, using pins to align and nestle seams. Press toward the sashing rows. The quilt top should measure  $68\frac{1}{2}$ " x  $68\frac{1}{2}$ " unfinished.
37. Attach (1)  $1\frac{1}{2}$ " x  $68\frac{1}{2}$ " Side Border to both sides of the quilt top, using pins for accuracy. Press outward.
38. Attach (1)  $1\frac{1}{2}$ " x  $70\frac{1}{2}$ " Top/Bottom Border to the top and bottom of the quilt top, using pins for accuracy. Press outward to complete assembly. The quilt top should measure  $70\frac{1}{2}$ " x  $70\frac{1}{2}$ " unfinished.







# CIRCUS TENTS

## Finishing the Quilt:

39. Sandwich the quilt top with batting and backing. Baste quilt layers together using your preferred method.
40. Quilt as desired.
41. Bind quilt using (8) 2 1/4" x WOF Fabric K strips.

1 Inch

Template D

Template A

