

## LEARN WHILE YOU PLAY QUILT

SIZE: 56"W X 65"H | LEVEL: BEGINNER

PATTERN BY: NATALIE CRABTREE OF CRABTREE ARTS COLLECTIVE

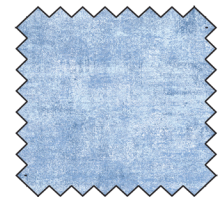
FREE PATTERN AVAILABLE AT [WWW.MICHAELMILLERFABRICS.COM](http://WWW.MICHAELMILLERFABRICS.COM)



### FABRIC REQUIREMENTS FOR 1 KIT:

SKU	YARDAGE PER QUILT
DDC12232 MULTI	1 YARD
CX9316 AMBER*	1 1/8 YARDS
CX9316 MELON	1/4 YARD
CX9316 OCEAN	1/4 YARD
DDC12231 CREAM	1 5/8 YARDS
DDC12230 CREAM	5/8 YARD
DDC12222 CORAL	1/4 YARD
DDC12229 BLUE	1/4 YARD
DDC12225 CREAM	1/4 YARD
DDC12224 MEADOW	1/4 YARD
DDC12226 NAVY	1/4 YARD
DDC12223 NAVY	1/4 YARD
DDC12226 CREAM	1/4 YARD
DDC12223 CREAM	1/4 YARD
DDC12226 RED	1/4 YARD
DDC12227 YELLOW	1/4 YARD
DDC12229 BLUE**	3 5/8 YARDS

\*INCLUDES BINDING | \*\*BACKING



### WIDE BACK

108 INCH WIDE BACK COTTON

PAIR OUR WIDE BACK

**WBX10060-ICE BLUE**

**FRESCO**

WITH THIS PROJECT! USE

**2 YARDS** FOR BACKING

\*IMAGE SHOWN NOT TRUE TO SCALE