

michael miller FABRICS

# Barn Quilt

SIZE: 41-1/2" x 45-1/2" • LEVEL: Intermediate • PATTERN BY: Marsha Evans Moore • FABRIC COLLECTION: Farm Days



THIS IS A DIGITAL REPRESENTATION OF THE QUILT TOP, FABRIC MAY VARY.

**PLEASE NOTE:** BEFORE BEGINNING YOUR PROJECT, CHECK FOR ANY PATTERN UPDATES AT [MICHAELMILLERFABRICS.COM](http://MICHAELMILLERFABRICS.COM)'S FREE PROJECTS SECTION.

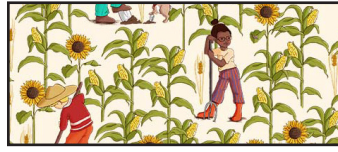
p.212.704.0774 | [info@michaelmillerfabrics.com](mailto:info@michaelmillerfabrics.com) | [www.michaelmillerfabrics.com](http://www.michaelmillerfabrics.com)

# Barn Quilt



**FABRIC A**

DDC11873\_Chocolate  
5/8 yard



**FABRIC B**

DDC11875\_Cream  
5/8 yard



**FABRIC C**

DDC11875\_Chocolate  
1/4 yard



**FABRIC D**

DDC11876\_Yellow  
5/8 yard



**FABRIC E**

DDC11876\_Azure  
7/8 yard



**FABRIC F**

DDC11878\_Chocolate  
1/4 yard



**FABRIC G**

DDC11879\_Meadow  
1 yard



**FABRIC H**

SC5333\_Paprika  
1/2 yard



**FABRIC I**

SC5333\_Brown  
5/8 yard \*



**FABRIC J**

CX1065\_Parchment  
3/8 yard

\* includes binding

# Barn Quilt

KEY	CUTTING INSTRUCTIONS
<b>A</b>	Centering farm motifs; <i>fussy-cut</i> (12) 4-1/2" squares, (1) 4-1/2" x 4" rectangle, (2) 2-1/2" x 3" rectangles and (1) 3-1/2" x 2-1/2" rectangles.
<b>B</b>	Centering gardening motifs; <i>fussy-cut</i> (14) 4-1/2" squares.
<b>C</b>	Centering gardening motifs; <i>fussy-cut</i> (1) 3-1/2" x 14-1/2" rectangle.
<b>D</b>	(2) 2-1/4" x 42" strips. Subcut (2) 2-1/4" x 17-1/2" borders and (2) 2-1/4" x 14-1/2" borders. (5) 1-1/2" x 42" strips. Subcut (2) 1-1/2" x 34-1/2" borders, (2) 1-1/2" x 36-1/2" borders and (32) 1-1/2" squares. (1) Roof template 1 and (1) Roof template 1 reversed. (1) Roof template 2 and (1) Roof template 2 reversed.
<b>E</b>	(5) 2" x 42" strips; sew short ends together. Subcut (2) 2" x 42-1/2" borders, (2) 2" x 41-1/2" borders and (1) 1-3/4" square. (4) 2-1/2" x 42" strips; subcut (56) 2-1/2" squares. (2) 1-1/2" x 7-1/2" rectangles. (1) Sky template 1 and (1) Sky template 1 reversed. (1) Sky template 2 and (1) Sky template 2 reversed.
<b>F</b>	Centering chickens; <i>fussy-cut</i> (6) 2-1/2" squares.
<b>G</b>	(3) 2-1/2" x 36" LOF strips; sew short ends together. Subcut (2) 2-1/2" x 38-1/2" LOF borders. (3) 2-1/2" x 30" WOF strips; sew short ends together. Subcut (2) 2-1/2" x 34-1/2" borders. (2) 4-1/4" x 24-1/2" WOF borders (2) 3-3/4" x 21" LOF borders. (8) 1-1/8" squares <i>fussy-cut</i> over dark green portion of fabric.
<b>H</b>	(1) 2-1/2" x 42" strip; subcut (2) 2-1/2" x 2" rectangles, (4) 2-1/2" squares and (4) 2-1/4" squares. (1) 1-1/2" x 42" strip; subcut (1) 1-1/2" x 12-1/2" rectangle, (2) 1-1/2" x 4-1/2" rectangles, (4) 1-1/2" x 3" rectangles and (2) 1-1/2" x 2-1/2" rectangles. (1) Upper Barn template and (1) Upper Barn template reversed.
<b>I</b>	(2) 1-1/2" x 42" strips; subcut (16) 1-1/2" x 2-1/2" rectangles, and (16) 1-1/2" squares. (1) 1" x 42" strip; subcut (1) 1" x 12-1/2" strip, (2) 1" x 3" strips and (2) 1" x 4" strips.

**CONTINUED ON PAGE 3.**

# Barn Quilt

KEY	CUTTING INSTRUCTIONS
I	<b>FOR BINDING:</b> (5) 2-1/4" x 42" strips, sew short ends together.
J	(1) 1-1/8" x 42" strip; subcut (4) 1-1/8" x 1-3/4" rectangles and (4) 1-1/8" squares. (3) 2-1/2" x 42" strips; subcut (48) 2-1/2" squares.
	50" x 54" batting.

## ADDITIONAL MATERIALS

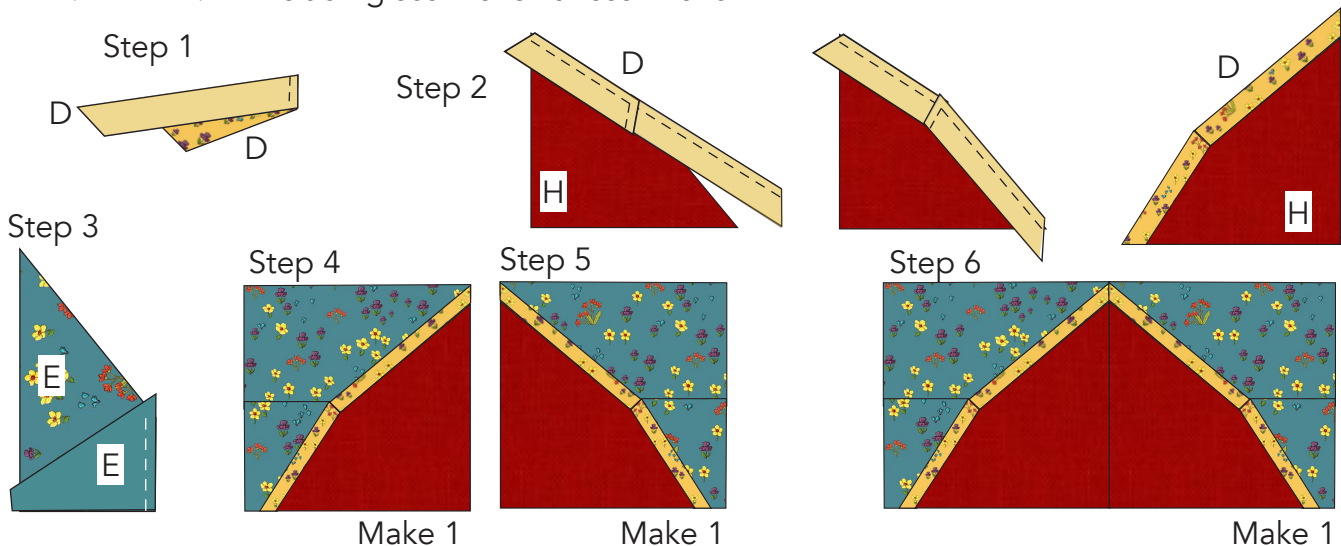
2-1/4 yards backing fabric  
Template plastic

Thread to match fabrics  
Basic sewing supplies

Sewing machine  
Rotary cutter, ruler and mat

## CENTER BLOCK

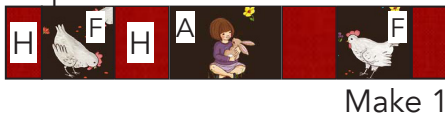
1. Sew the end of (1) **D** Roof Template 1 to the end of (1) **D** Roof template 2 beginning at the corner of the seamline and ending at the edge of the fabric.
2. Sew joined Roof template1 to edge of (1) **H** Upper Barn ending stitching at the corner of the seamline. Sew Roof template 2 to edges of (1) **H** Upper Barn beginning stitching at the corner of the seamline.
3. Sew (1) **E** Sky Template 1 and (1) **E** Sky template 2 together beginning at the corner of the seamline and ending at the edge of the fabric.
4. Sew Sky template 1 to Roof template 1 ending stitching at corner of seamline. Sew Sky template 2 to Roof template 2 beginning at the corner of the seamline to complete (1) left upper block unit. Make 1.
5. Following steps 1-4, make (1) right upper block unit using the reversed templates. Make 1.
6. Sew the left and right upper barn units together. Joined upper barn units should measure 14-1/2" x 7-1/2" including seam allowances. Make 1.



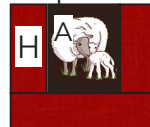
# Barn Quilt

7. Sew together (2) **H** 1-1/2" x 2-1/2" rectangles, (2) **F** 2-1/2" squares, (2) **H** 2-1/2" x 2" rectangles and (1) **A** 3-1/2" x 2-1/2" rectangle as shown to make (1) upper unit. Make 1.
8. Sew together (2) **H** 1-1/2" x 3" rectangles to sides of (1) **A** 3" x 2-1/2" rectangle. Sew (1) **H** 1-1/2" x 4-1/2" rectangle to lower edge to make (1) lower window unit. Make 2.
9. Sew (2) lower window units to sides of (1) **A** 4-1/2" x 4" rectangle to make (1) lower unit. Make 1.
10. Sew together (1) upper unit, (1) **H** 1-1/2" x 12-1/2" rectangle, (1) lower unit and (1) **I** 1" x 12-1/2" rectangle to make the lower barn unit. Make 1
11. Sew (2) **E** 1-1/2" x 7-1/2" strips to sides of the lower barn unit. Lower barn unit should measure 14-1/2" x 7-1/2" including seam allowance. Make 1.
12. Sew together upper barn unit, lower barn unit and (1) **C** 3-1/2" x 14-1/2" rectangle. Center block should measure 14-1/2" x 17-1/2" including seam allowance. Make 1.

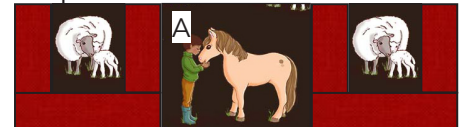
Step 7



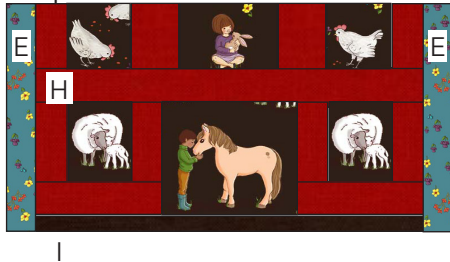
Step 8



Step 9



Steps 10-11



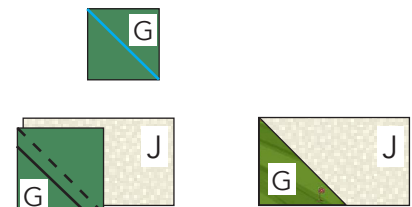
Step 12



## BARN QUILT BLOCK

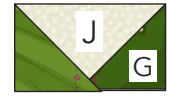
13. Draw a diagonal line on wrong side of (8) **G** 1-1/8" squares.

14. Place (1) **G** 1-1/8" square on lower left corner of (1) **J** 1-1/8" x 1-3/4" rectangle with right sides together. Sew on the drawn line. Trim the fabric 1/8" - 3/16" from the stitching as indicated by the solid line. Press the **G** piece open.



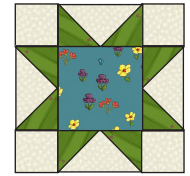
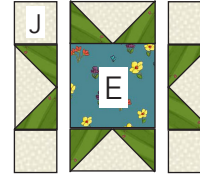
# Barn Quilt

**15.** Place (1) **G** 1-1/8" square on lower right corner of the **J** 1-1/8"x 1-3/4" rectangle with right sides together. Sew, trim and press in the same manner to make a "Flying Geese" unit. Make 4.



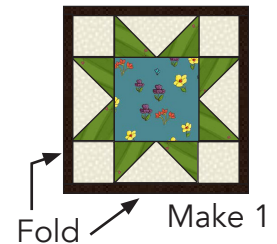
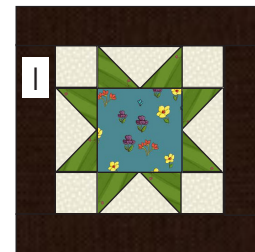
Make 4

**16.** Arrange (4) "flying geese" units, (4) **J** 1-1/8" squares and (1) **E** 1-3/4" square in (3) columns. Sew the squares and "flying geese" units in each column together.



**17.** Sew the columns together to make (1) star unit. Make 1.

**18.** Sew (1) **I** 1" x 3" strip to each side of star unit. Sew (2) **I** 1" x 4" strips to top and bottom of star unit. Fold the outer edge of the strips on all four sides over the 1/4" seam allowance and press in place. Block should measure approximately 3-1/2".

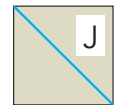


Make 1

**19.** Following Quilt Layout on page 7, sew Barn Quilt Block centered on upper barn about 1-1/2" above window. Make 1.

## PATCHWORK BORDER BLOCKS

**20.** Draw a diagonal line on wrong side of (32) **D** 1-1/2" squares, (56) **E** 2-1/2" squares and (48) **J** 2-1/2" squares.



**21.** Following steps 14-17, make corner star blocks, using (8) **D** 1-1/2" squares, (1) **F** 2-1/2" square, (4) **I** 1-1/2" x 2-1/2" rectangles and (4) **I** 1-1/2" squares. Make 4.



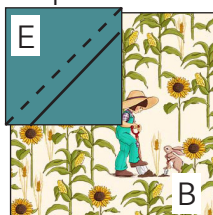
Make 4

**22.** Place (1) **E** 2-1/2" square on upper left corner of (1) **B** 4-1/2" square with right sides together. Sew on the drawn line. Trim the fabric 1/4" from the stitching as indicated by the solid line. Press the **E** piece open.

**23.** Place (1) **E** 2-1/2" square on the remaining (3) corners of the **B** 4-1/2" square with right sides together. Sew, trim and press in the same manner to make a **B/E** border block. Make 14.

**24.** Following steps 22-23, make **A/J** border blocks using (1) **A** 4-1/2" square and (4) **J** 2-1/2" squares. Make 12.

Step 22

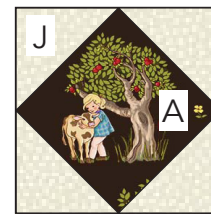


Step 23



Make 14

Step 24



Make 12



# Barn Quilt

## QUILT ASSEMBLY

- 25.** Following the Quilt Layout on page 7, sew (1) **D** 2-1/4" x 17-1/2" border to the sides of the Center Block. Sew (2) **H** 2-1/4" square to the ends of (2) **D** 2-1/4" x 14-1/2" borders. Sew to the top and bottom of the quilt.
- 26.** Sew (1) **G** 3-3/4" x 21 LOF border to each side of the quilt. Sew (2) **G** 4-1/4" x 24-1/2" WOF borders to top and bottom of the quilt.
- 27.** Sew together (4) **E/B** border blocks alternating with (3) **A/J** border blocks to make the side borders. Make 2. (1) border to each side of the quilt.
- 28.** Sew together (3) **A/J** border blocks alternating with (3) **E/B** border blocks. Sew (1) corner star block to each end to make the top and bottom borders. Make 2. Sew to the top and bottom of the quilt.
- 29.** Sew (1) **D** 1-1/2" x 36-1/2" border to each side of the quilt. Sew (2) **D** 1-1/2" x 34-1/2" borders to the top and bottom of the quilt.
- 30.** Sew (1) **G** 2-1/2" x 38-1/2" LOF borders to the sides of the quilt. Sew (2) **H** 2-1/2" squares to the ends of (2) **G** 2-1/2" x 34-1/2" WOF borders. Sew to the top and bottom and bottom of the quilt.
- 31.** Sew (1) **E** 2" x 42-1/2" border to each side of the quilt. Sew (2) **E** 2" x 41-1/2" borders to the top and bottom the quilt.

# Barn Quilt

## Quilt Layout

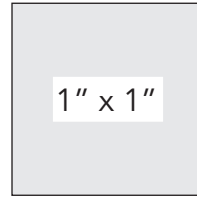
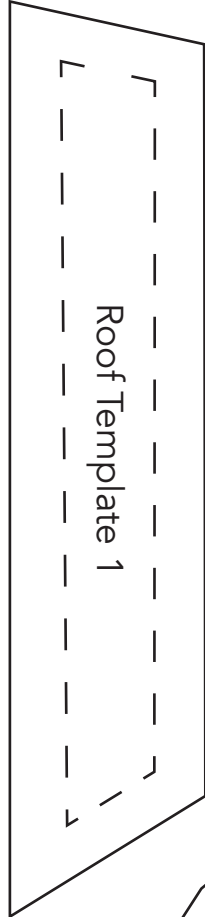
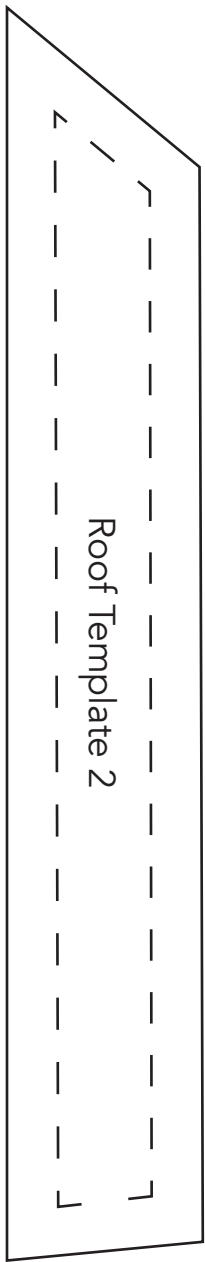


**FINISHING:** Layer quilt top, batting and backing together to form quilt sandwich. Baste and quilt as desired. Bind using five fabric 1 2-1/4" strips.

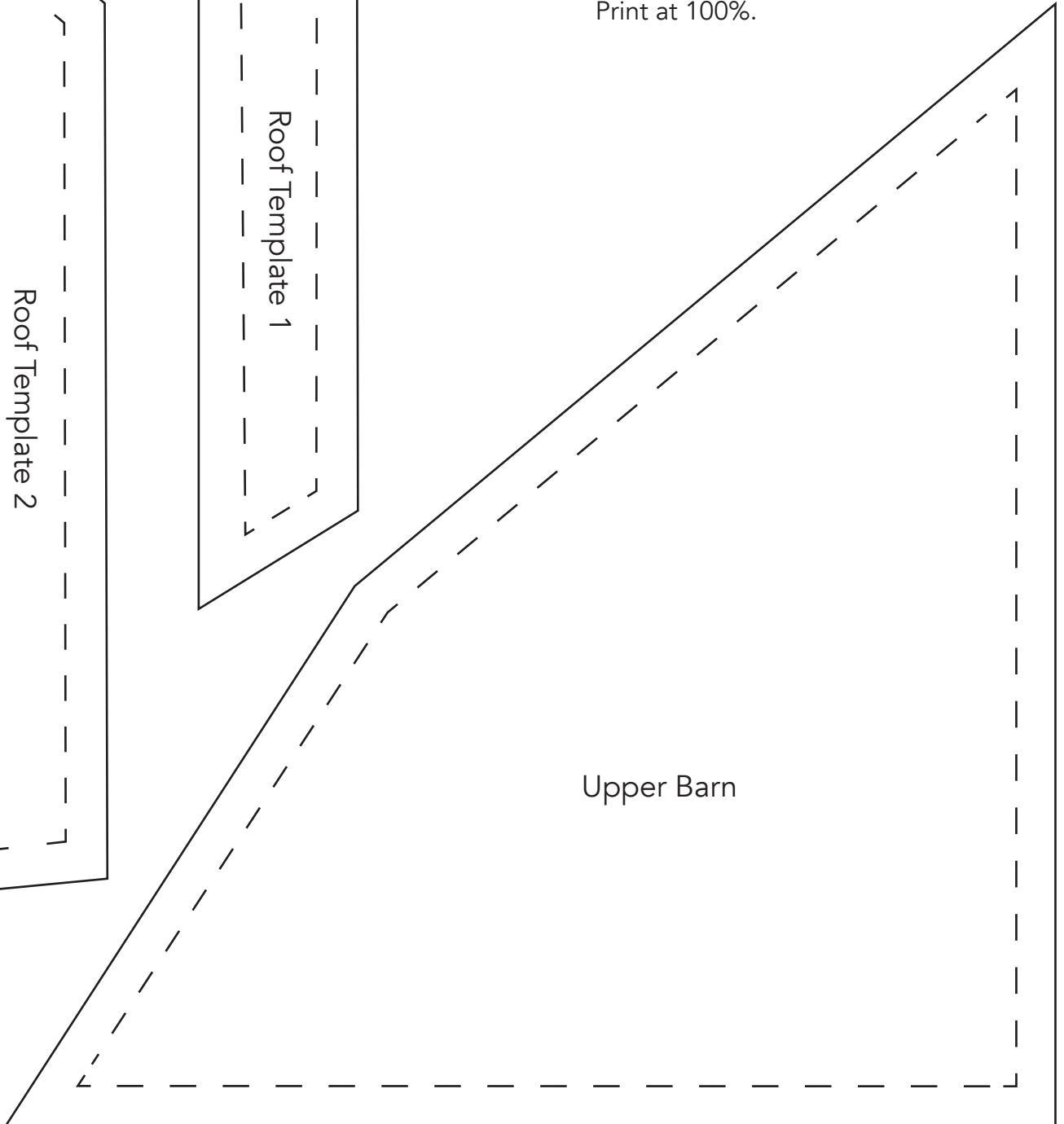


# Barn Quilt

## Templates



Print at 100%.





# Barn Quilt

## Templates

