

Gender Reveal (Pink)

SIZE: 49-1/2" x 60-3/4" • LEVEL: Intermediate • PATTERN BY: MARSHA EVANS MOORE • FABRIC COLLECTION: Baby Love



THIS IS A DIGITAL REPRESENTATION OF THE QUILT TOP, FABRIC MAY VARY.

PLEASE NOTE: BEFORE BEGINNING YOUR PROJECT, CHECK FOR ANY PATTERN UPDATES AT MICHAELMILLERFABRICS.COM'S FREE PROJECTS SECTION.

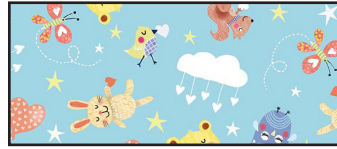
Gender Reveal (Pink)



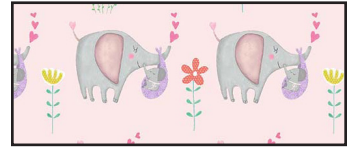
FABRIC A
DC11586_Pink
7/8 yard



FABRIC B
DC11588_Pink
1/4 yard



FABRIC C
DC11589_Blue
1/4 yard



FABRIC D
DC11591_Pink
1/4 yard



FABRIC E
DC11592_Blossom
1/2 yard



FABRIC F
DC11595_Pink
1 Panel



FABRIC G
DC11597_Pink
5/8 yard



FABRIC H
Sc5333_Soft White
5/8 yard



FABRIC I
CX7161_Carnation
5/8 yard



FABRIC J
CX1065_Berry *
3/4 yard

* includes binding



Gender Reveal (Pink)

KEY	CUTTING INSTRUCTIONS
A	(5) 3-1/2" x 42" strips; sew short ends together. Subcut (2) 3-1/2" x 54-3/4" borders and (2) 3-1/2" x 49-1/2" borders.
B	(3) Diamond template 2 reversed.
C	(3) Diamond template 2 reversed. (3) Diamond template 1.
D	(3) Diamond template 2 reversed.
E	(8) 1-3/4" x 42" strips; subcut (31) 1-3/4" x 10-1/2" strips.
F	Centering design, <i>fussy cut</i> : (6) 10-1/2" squares centered over printed blocks.
G	(5) 2-1/2" x 42" strips; sew short ends together. Subcut (2) 3-1/2" x 53-3/4" borders and (2) 4-1/2" x 42-1/2" borders. Trim ends of borders diagonally.
H	(12) Triangle templates and (12) Triangle templates reversed . (3) 1" x 42" strips; subcut (12) 1" x 9" strips. (5) 1-1/2" x 42" strips; sew short ends together. Subcut (2) 1-1/2" x 52-3/4" borders and (2) 1-1/2" x 43-1/2" borders.
I	(3) 1-1/4" x 42" strips; subcut (12) 1-1/4" x 9" strips and (12) 1-1/4" x 10-1/2" strips. (6) Diamond template 2.
J	(1) 1-3/4" x 42" strip; subcut (20) 1-3/4" squares. (6) Heart templates. FOR BINDING: (6) 2-1/4" x 42" strips, sew short ends together.
	Batting 58" x 69"

ADDITIONAL MATERIALS

Thread to match fabrics
Basic sewing supplies

Sewing machine
Rotary cutter, ruler and mat

Template plastic

Optional: For turned edge appliqué: freezer paper or other template paper
For raw edge appliqué: paper backed fusible webbing

Gender Reveal (Pink)

BABY BLOCKS

1. Prepare (6) **J** Heart appliqué pieces using your preferred appliqué method. Trace the pattern for Heart Placement to (6) **I** Diamond template 2.

2. Fuse, baste or pin (1) **J** Heart appliqué on (1) **I** Diamond template 2. Sew along the edges of the Heart. Make 6.

3. Sew (1) **C** Diamond Template 2 reversed to (1) **I** Diamond Template 2 beginning 1/4" from the edge to make a diamond pair.

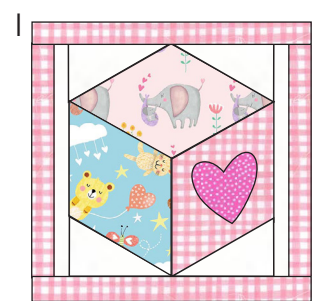
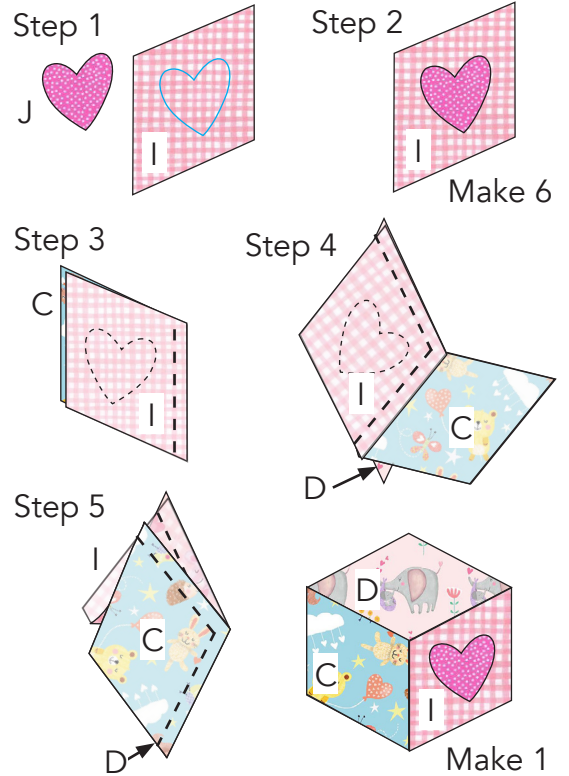
4. Sew fabric **F** edge of diamond pair to (1) **D** Diamond Template 1 ending stitching 1/4" from the edge.

5. Sew fabric **B** edge of diamond pair to **D** Diamond Template 1 beginning stitching 1/4" from the edge to complete block shape. Make 1.

6. Sew (2) **H** Triangle templates and (2) **H** Triangle templates reversed to sides of the block shape to make a square unit.

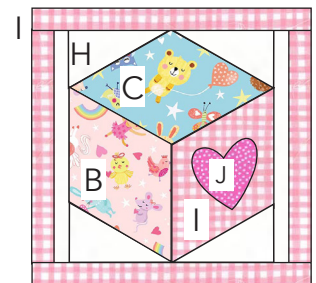
7. Sew (1) **H** 1" x 9" strip to each side of the square unit.

8. Sew (1) **I** 1-1/4" x 9" strip to sides of H strips. Sew (2) **I** 1-1/4" x 10-1/2" strips to top and bottom of the block. Make 3.



Make 3

9. Following steps 1-8, make blocks using the fabrics shown. Make 3.



Make 3



Gender Reveal (Pink)

QUILT ASSEMBLY

- 10.** Following the Quilt Layout on page 5, arrange (6) **F** 10-1/2" squares and (6) patchwork blocks in 4 rows of 3 blocks. Sew together (4) **E** 1-3/4" x 10-1/2" strips alternating with the squares and blocks to make the block rows. Make 4.

- 11.** Sew together (4) **J** 1-3/4" squares alternating with (3) **E** 1-3/4" x 10-1/2" strips to make the sashing rows. Make 5.

- 12.** Sew together (5) sashing rows alternating with (4) block rows to make the quilt center. Center should measure 35-1/2" x 46-3/4" including seam allowance.

- 13.** Sew (1) **I** 1-1/2" x 46-3/4" border to each side of the quilt. Sew (2) **I** 1-3/4" x 37-1/2" borders to top and bottom of the quilt.

- 14.** Sew shorter edge of (1) **G** 2-1/2" x 53-3/4" borders to each side of the quilt beginning and ending stitching 1/4" from ends of seam Sew shorter edge of (2) **G** 2-1/2" x 42-1/2" to top and bottom of quilt in the same way. Sew the diagonal ends of adjacent borders together.

- 15.** Sew (1) **H** 1-1/2" x 52-3/4" border to each side of the quilt. Sew (2) **I** 1-3/4" x 43-1/2" borders to top and bottom of the quilt.

- 16.** Sew (1) **A** 3-1/2" x 54-3/4" border to each side of the quilt. Sew (2) **A** 3-1/2" x 49-1/2" borders to top and bottom of the quilt.

Gender Reveal (Pink)

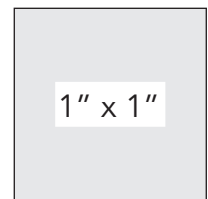
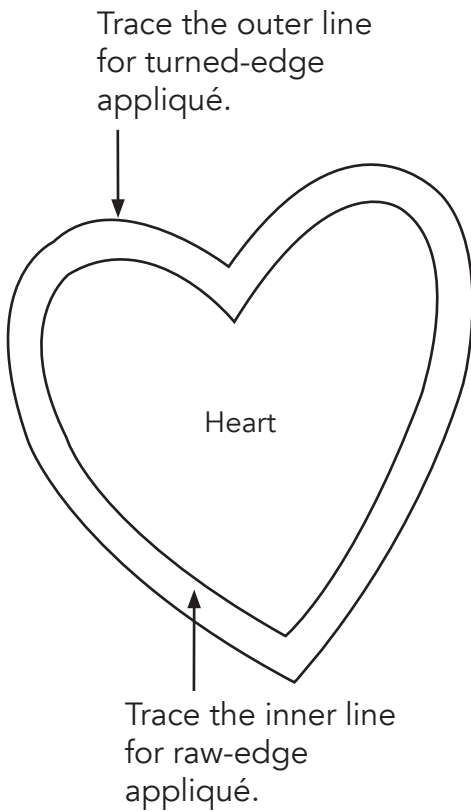
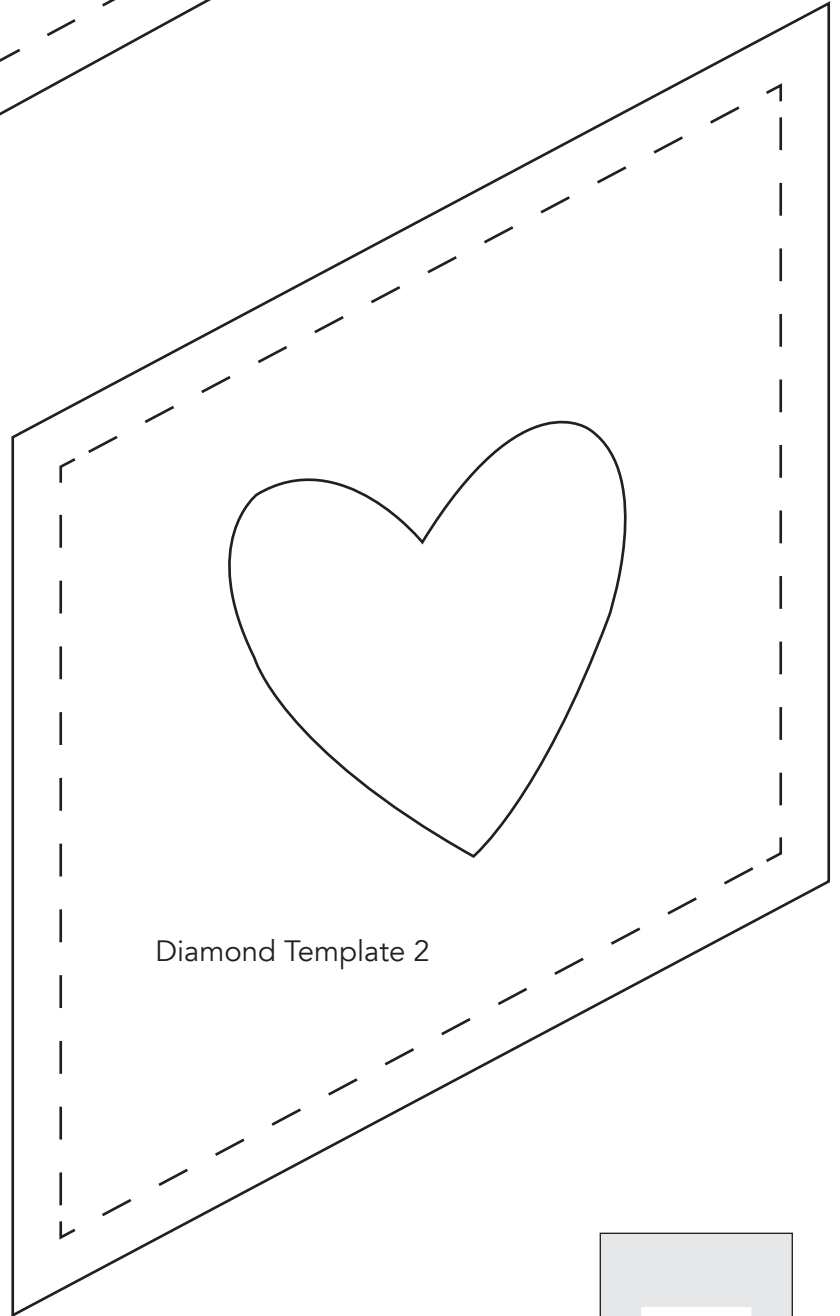
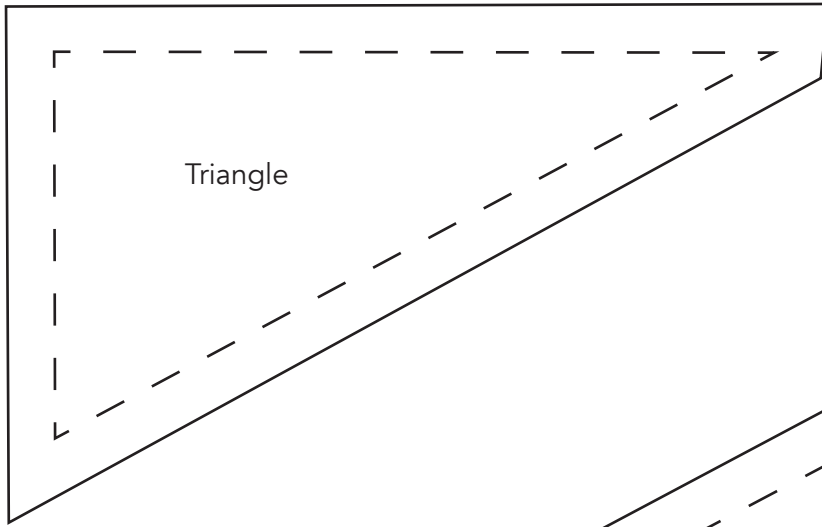
Quilt Layout



FINISHING: Layer quilt top, batting and backing together to form quilt sandwich. Baste and quilt as desired. Bind using six fabric J 2-1/4" strips.

Gender Reveal (Pink)

Templates

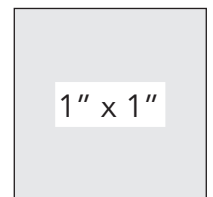
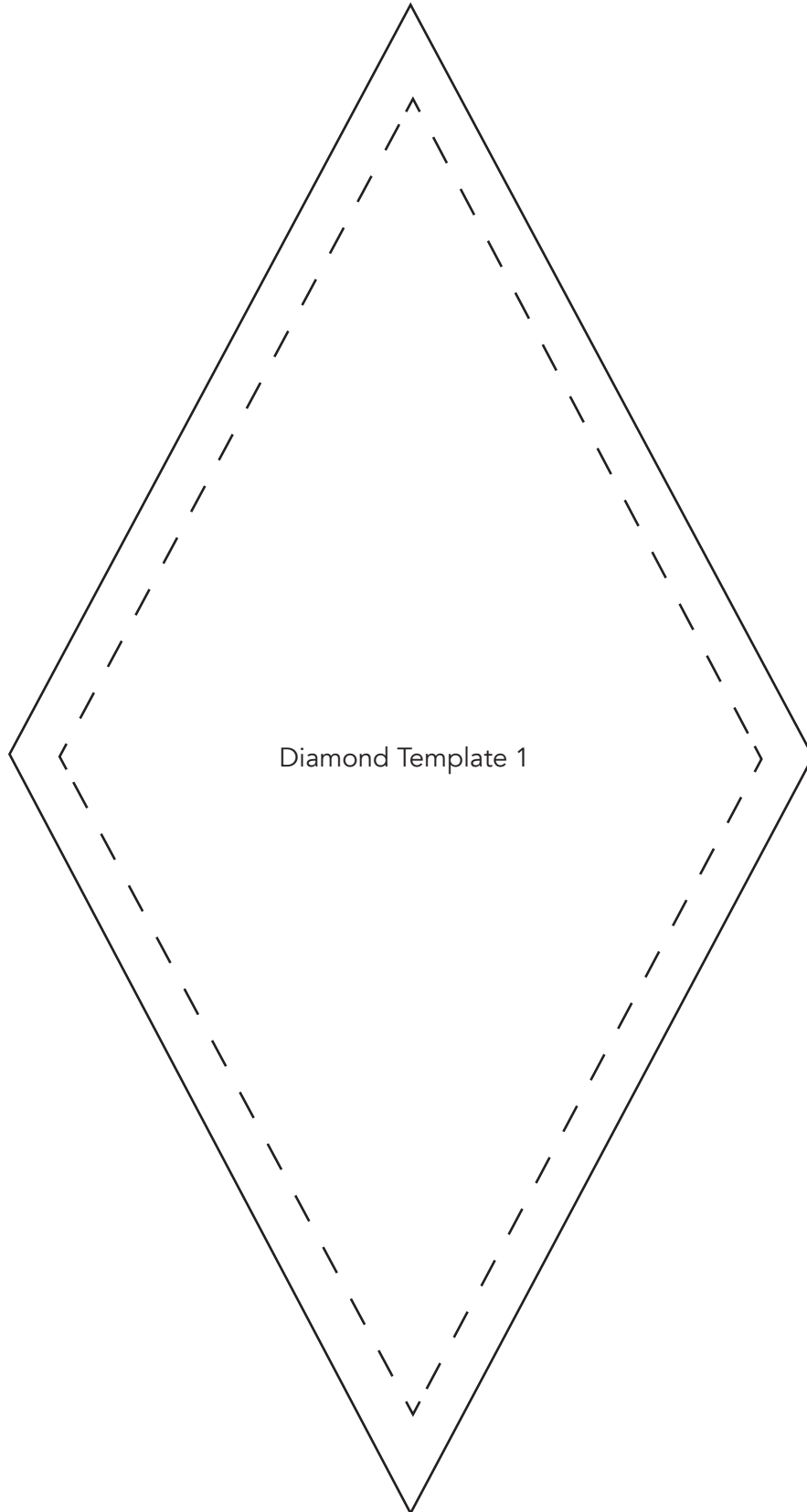


Print at 100%.



Gender Reveal (Pink)

Template



Print at 100%.