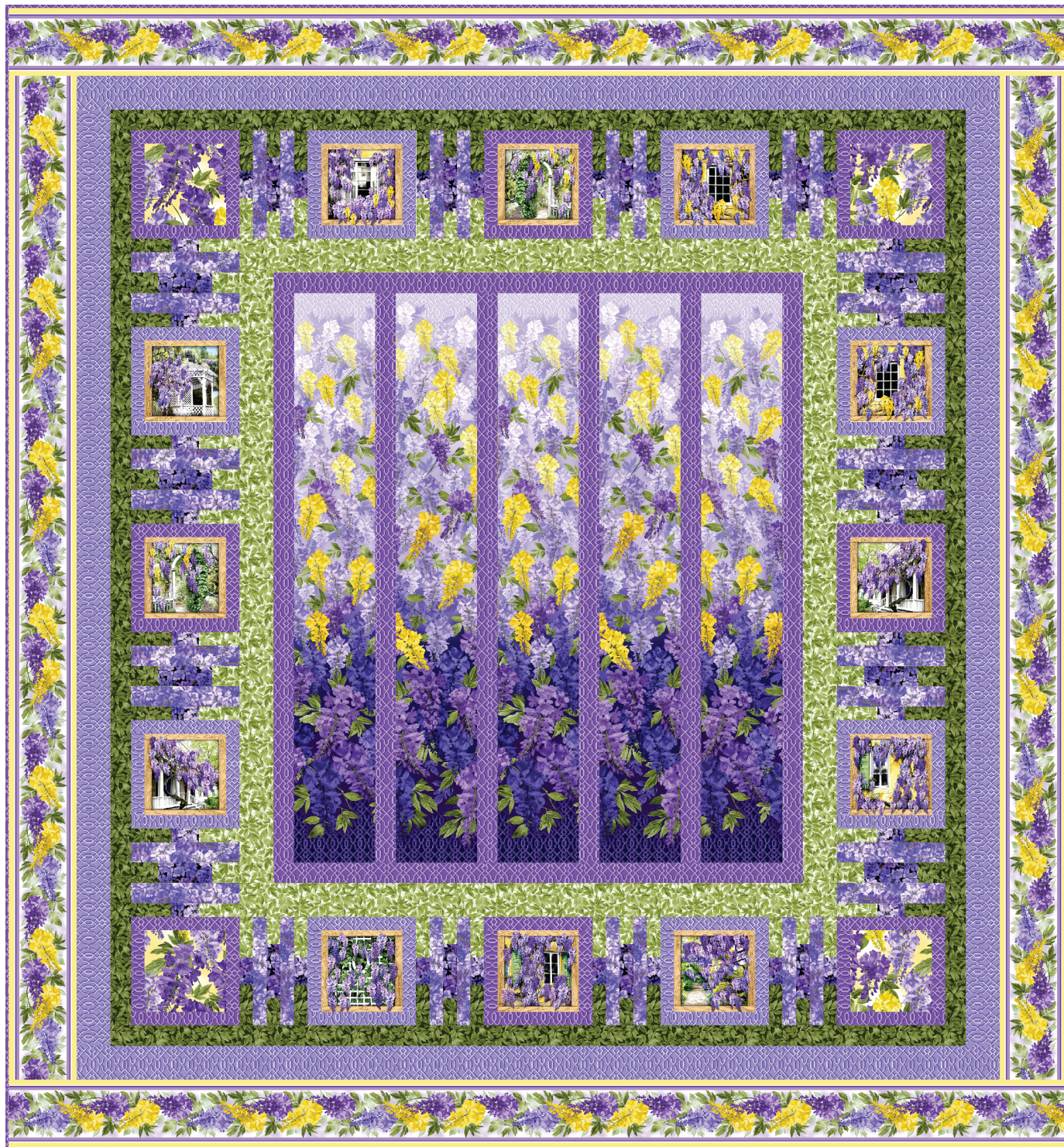


michael miller FABRICS

Wisteria Lane

SIZE: 78"x 84" • LEVEL: Advanced Beginner • PATTERN BY: The Whimsical Workshop • Wisteria Lane Fabric Collection
PATTERN AVAILABLE ON:



THIS IS A DIGITAL REPRESENTATION OF THE QUILT TOP, FABRIC MAY VARY.

PLEASE NOTE: BEFORE BEGINNING YOUR PROJECT, CHECK FOR ANY PATTERN UPDATES AT MICHAELMILLERFABRICS.COM'S FREE PROJECTS SECTION.

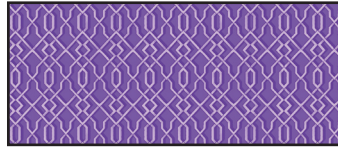
p.212.704.0774 | info@michaelmillerfabrics.com | www.michaelmillerfabrics.com



Wisteria Lane



FABRIC A
DCX11076-Jewel
1-1/4 yards



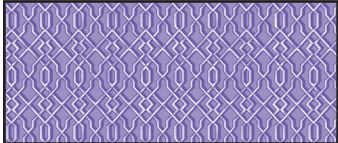
FABRIC B
CX11082-Grape
1-2/3 yards



FABRIC C
DCX11078-Sage
7/8 yard



FABRIC D
DCX11075-Amethyst
1/2 yard



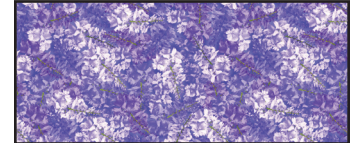
FABRIC E
CX11082-Amethyst
1-1/8 yards



FABRIC F
DCX11077-Jewel
1/4 yard



FABRIC G
DCX11077-Midnight
1/3 yard



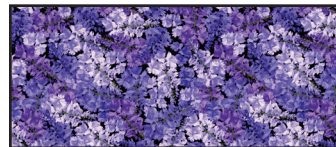
FABRIC H
DCX11079-Opal
1/2 yard



FABRIC I
DCX11078-Juniper
7/8 yard



FABRIC J
DCX11081-Citron
2-1/4 yards



Backing
DCX11079-Sapphire
7-1/4 yards



Wisteria Lane

KEY	CUTTING INSTRUCTIONS
A	(5) 6-1/2" x 42-1/2" Length of Fabric (LOF) strips
B	(6) 2" x 42-1/2" Width of Fabric (WOF) strips, piece as needed. (2) 2" x 39-1/2" WOF strips. (2) 2" x WOF strips, sub-cut (8) 2" x 6-1/2" strips. (2) 2" x WOF strips, sub-cut (8) 2" x 9-1/2" strips. (2) 1-1/2" x WOF strips, sub-cut (8) 1-1/2" x 6-1/2" strips. (2) 1-1/2" x WOF strips, sub-cut (8) 1-1/2" x 8-1/2" strips. FOR BINDING: (8) 2-1/2" strips, sew short ends together.
C	(3) 3" x WOF strips, sew short ends together. Subcut (2) 3" x 45-1/2" strips. (3) 3" x WOF strips, sew short ends together. Subcut (2) 3" x 44 1/2" strips. (1) 2" x WOF strip, sub-cut (8) 2" x 2-1/2" strips. (3) 1-1/2" x WOF strips, sub-cut (32) 1-1/2" x 3-1/2" strips. (1) 1-1/2" x WOF strip, sub-cut (8) 1-1/2" x 2-1/2" strips.
D	Centered on blocks, fussy cut (12) 6-1/2" squares.
E	(4) 3" x WOF strips, sew short ends together. Subcut (2) 3" x 69-1/2" strips. (4) 3" x WOF strips, sew short ends together. Subcut (2) 3" x 68-1/2" strips. (3) 2" x WOF strips, sub-cut (16) 2" x 6-1/2" strips. (4) 2" x WOF strips, sub-cut (16) 2" x 9-1/2" strips.
F	(1) 6-1/2" x WOF strip, sub-cut (4) 6-1/2" squares.
G	(1) 2" x WOF strip, sub-cut (8) 2" x 4-1/2" strips. (1) 1-1/2" x WOF strip, sub-cut (8) 1-1/2" x 4-1/2" strips. (2) 1-1/2" x WOF strips, sub-cut (32) 1-1/2" x 2-1/2" strips.
H	(4) 2" x WOF strips, sub-cut (16) 2" x 8-1/2" strips. (4) 1-1/2" x WOF strips, sub-cut (16) 1-1/2" x 8-1/2" strips.
I	(4) 2" x WOF strips, sew short ends together. Subcut (2) 2" x 66-1/2" strips. (4) 2" x WOF strips, sew short ends together. Subcut (2) 2" x 63-1/2" strips. (1) 2" x WOF strip, sub-cut (8) 2" x 2-1/2" strips. (3) 1-1/2" x WOF strips, sub-cut (32) 1-1/2" x 3-1/2" strips. (1) 1-1/2" x WOF strip, sub-cut (8) 1-1/2" x 2-1/2" strips.
J	(2) 5-1/2" x 74-1/2" LOF strips. (2) 5-1/2" x 78-1/2" LOF strips.
Back	(3) 86" x WOF strips. Piece the strips together and trim to make the 86" x 92" pieced backing.
	Batting 86" x 92"

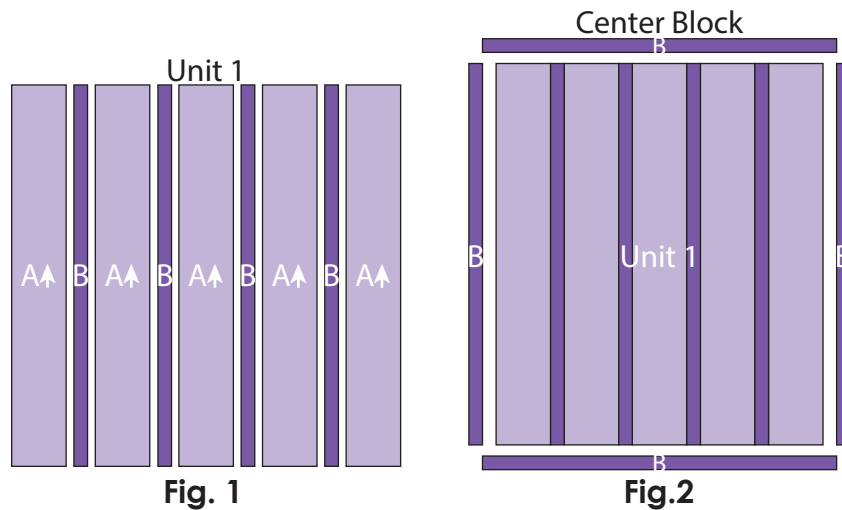
Wisteria Lane

Note: The arrows in the figures represent the fabric print direction. Pay attention to the fabric and unit orientations when assembling the various components.

Block Assembly

1. Refer to **Figure 1** and sew together (5) 6-1/2" x 42-1/2" Fabric **A** strips and (4) 2" x 42-1/2" Fabric **B** strips lengthwise and alternating them from left to right to make the **Unit 1** rectangle.

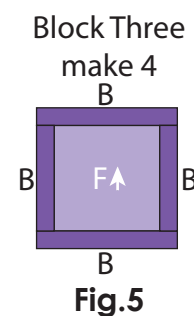
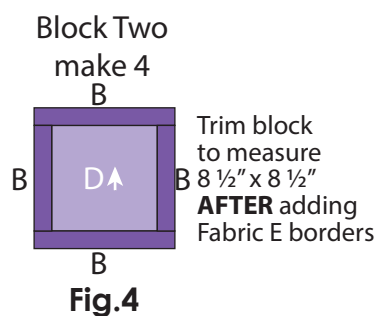
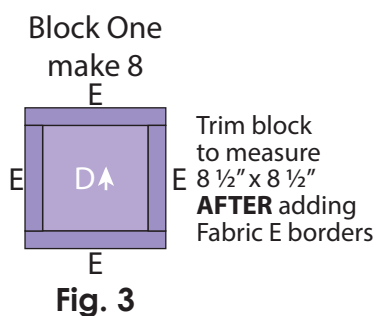
2. Sew (1) 2" x 42-1/2" Fabric **B** strip to each side of the **Unit 1** rectangle. Sew (1) 2" x 39-1/2" Fabric **B** strip to the top and to the bottom of the **Unit 1** rectangle to make the 39-1/2" x 45-1/2" **Center Block (Fig. 2)**.



3. Sew (1) 2" x 6-1/2" Fabric **E** strip to each side of (1) 6-1/2" Fabric **D** square. Sew (1) 2" x 9-1/2" Fabric **E** strip to the top and to the bottom of the Fabric **D** square to make (1) **Block One** square (**Fig. 3**). **Trim the block to measure 8-1/2" x 8-1/2"**. Repeat to make (8) **Block One** squares total.

4. Sew (1) 2" x 6-1/2" Fabric **B** strip to each side of (1) 6-1/2" Fabric **D** square. Sew (1) 2" x 9-1/2" Fabric **B** strip to the top and to the bottom of the Fabric **D** square to make (1) **Block Two** square (**Fig. 4**). **Trim the block to measure 8-1/2" x 8-1/2"**. Repeat to make (4) **Block Two** squares total.

5. Sew (1) 1-1/2" x 6-1/2" Fabric **B** strip to each side of (1) 6-1/2" Fabric **F** square. Sew (1) 1-1/2" x 8-1/2" Fabric **B** strip to the top and to the bottom of the Fabric **F** square to make (1) 8-1/2" **Block Three** square (**Fig. 5**). Repeat to make (4) **Block Three** squares total.

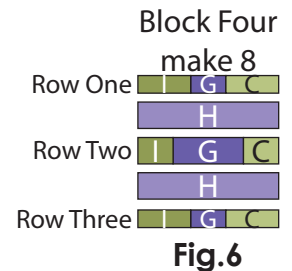


Wisteria Lane

6. Sew together (1) 1-1/2" x 3-1/2" Fabric **I** strip, (1) 1-1/2" x 2-1/2" Fabric **G** strip and (1) 1-1/2" x 3-1/2" Fabric **C** strip, end to end and in that order from left to right, to make **Row One (Fig. 6)**. Repeat to make **Row Three**.

7. Sew together (1) 2" x 2-1/2" Fabric **I** strip, (1) 2" x 4-1/2" Fabric **G** strip and (1) 2" x 2-1/2" Fabric **C** strip, end to end and in that order from left to right, to make **Row Two (Fig. 6)**.

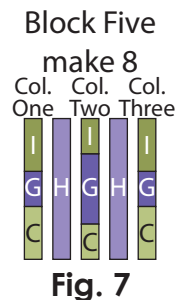
8. Sew together **Row One**, (1) 2" x 8-1/2" Fabric **H** strip, **Row Two**, (1) 2" x 8-1/2" Fabric **H** strip and **Row Three**, lengthwise and in that order from top to bottom, to make (1) 8-1/2" x 7" **Block Four** rectangle (Fig. 6).



9. Repeat **Steps 6-8** to make (8) **Block Four** rectangles total.

10. Sew together (1) 1-1/2" x 3-1/2" Fabric **I** strip (1) 1-1/2" x 2-1/2" Fabric **G** strip and (1) 1-1/2" x 3-1/2" Fabric **C** strip, end to end and in that order from top to bottom, to make **Column One (Fig. 7)**. Repeat to make **Column Three**.

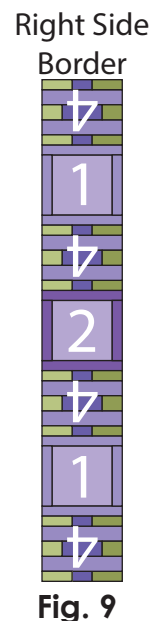
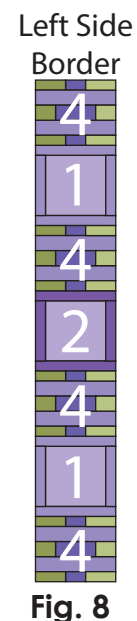
11. Sew together (1) 1-1/2" x 2-1/2" Fabric **I** strip, (1) 1-1/2" x 4-1/2" Fabric **G** strip and (1) 1-1/2" x 2-1/2" Fabric **C** strip, end to end and in that order from top to bottom, to make **Column Two (Fig. 7)**.



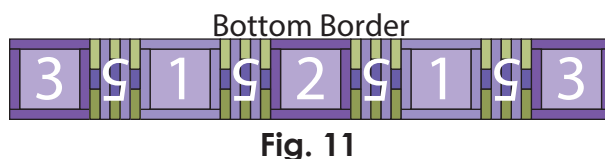
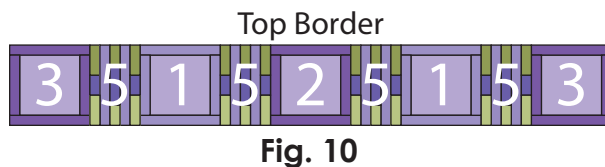
12. Sew together **Column One**, (1) 1-1/2" x 8-1/2" Fabric **H** strip, **Column Two**, (1) 1-1/2" x 8-1/2" Fabric **H** strip and the **Column Three** lengthwise and in that order from left to right to make (1) 5-1/2" x 8-1/2" **Block Five** rectangle (Fig. 7).

13. Repeat **Steps 10-12** to make (8) **Block Five** rectangles total.

14. Sew together (1) **Block Four** rectangle, (1) **Block One** square, (1) **Block Four** rectangle, (1) **Block Two** square, (1) **Block Four** rectangle, (1) **Block One** square and (1) **Block Four** rectangle, in that order from top to bottom, to make the **Left Side Border (Fig. 8)**.



15. Repeat **Step 14** and refer to **Figures 9-11** for component identification, placement and orientation to make the **Right Side Border, Top Border** and **Bottom Border**.



Wisteria Lane

Quilt Top Assembly:

(Refer to the Quilt Layout when assembling the quilt top.)

16. Sew (1) 3" x 45-1/2" Fabric **C** strip to each side of the **Center Block**. Sew (1) 3" x 44-1/2" Fabric **C** strip to the top and to the bottom of the **Center Block**.

17. Sew the **Left Side Border** and **Right Side Border** to the left and to the right sides of the **Center Block**.

18. Sew the **Top Border** and the **Bottom Border** to the top and to the bottom of the **Center Block**.

19. Sew (1) 2" x 66-1/2" Fabric **I** strip to each side of the **Center Block**. Sew (1) 2" x 63-1/2" Fabric **I** strip to the top and to the bottom of the **Center Block**.

20. Sew (1) 3" x 69-1/2" Fabric **E** strip to each side of the **Center Block**. Sew (1) 3" x 68-1/2" Fabric **E** strip to the top and to the bottom of the **Center Block**.

21. Sew (1) 5-1/2" x 74-1/2" Fabric **J** strip to each side of the **Center Block**. Sew (1) 5-1/2" x 78-1/2" Fabric **J** strip to the top and to the bottom of the **Center Block** to make the quilt top.

FINISHING:

22. With the backing fabric laying taut, place batting and then quilt top to form quilt sandwich. Baste sandwich.

23. Quilt as desired.

24. Bind to finish quilt.

