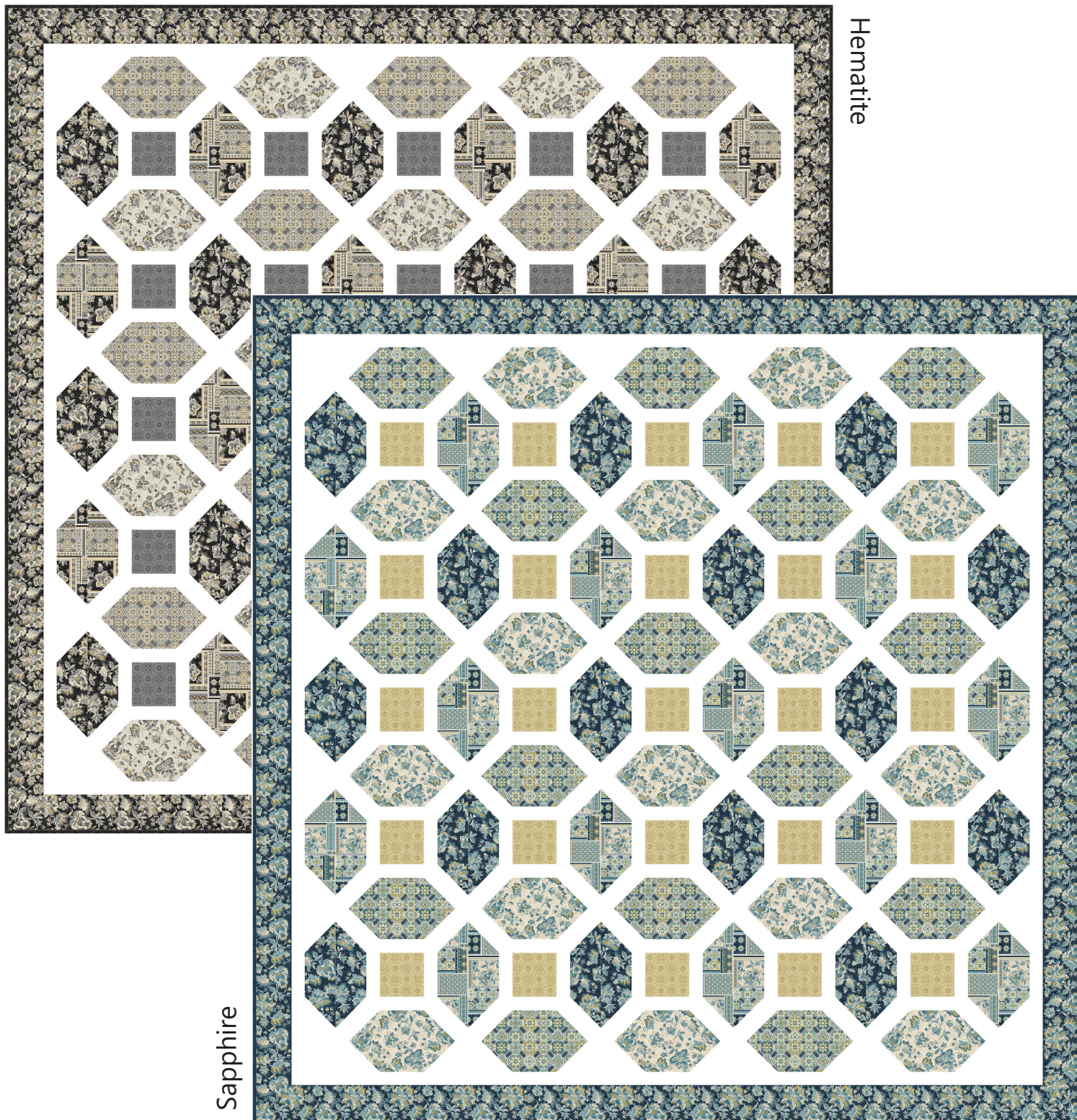


michael miller FABRICS

# Crown Jewel

SIZE: 97"W x 97"H • LEVEL: INTERMEDIATE • PATTERN BY: CHRISTINE STAINBROOK



THIS IS A DIGITAL REPRESENTATION OF THE QUILT TOP, FABRIC MAY VARY.

**PLEASE NOTE:** BEFORE BEGINNING YOUR PROJECT, CHECK FOR ANY PATTERN UPDATES AT [MICHAELMILLERFABRICS.COM](http://MICHAELMILLERFABRICS.COM)'S FREE PROJECTS SECTION.

p.212.704.0774 | [info@michaelmillerfabrics.com](mailto:info@michaelmillerfabrics.com) | [www.michaelmillerfabrics.com](http://www.michaelmillerfabrics.com)



# Crown Jewel

## Sapphire Colorway



**FABRIC A**  
SC5333 bright white  
4 yards



**FABRIC B**  
CX11639 blue  
1 $\frac{1}{4}$  yards



**FABRIC C**  
DCX11632 tan  
1 $\frac{1}{4}$  yards



**FABRIC D**  
DCX11632 nite  
1 $\frac{1}{4}$  yards



**FABRIC E**  
CX11634 blue  
1 $\frac{1}{4}$  yards



**FABRIC F**  
CX11636 gold  
 $\frac{7}{8}$  yard



**FABRIC G**  
DCX11635 nite  
3 yards

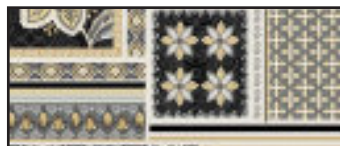


**FABRIC H**  
CX11636 nite  
1 yard

## Hematite Colorway



**FABRIC A**  
SC5333 bright white  
4 yards



**FABRIC B**  
CX11639 gray  
1 $\frac{1}{4}$  yards



**FABRIC C**  
DCX11632 cream  
1 $\frac{1}{4}$  yards



**FABRIC D**  
DCX11632 black  
1 $\frac{1}{4}$  yards



**FABRIC E**  
CX11634 gray  
1 $\frac{1}{4}$  yards



**FABRIC F**  
CX11636 gray  
 $\frac{7}{8}$  yard



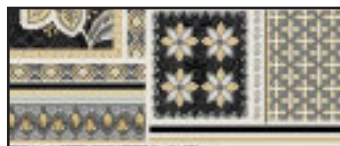
**FABRIC G**  
DCX11635 black  
3 yards



**FABRIC H**  
CX11636 black  
1 yard



**BACKING-SAPPHIRE**  
CX11639 blue  
8 $\frac{3}{4}$  yards



**BACKING-HEMATITE**  
CX11639 gray  
8 $\frac{3}{4}$  yards

**BATTING**  
105" x 105"



# Crown Jewel

## 1/4" Seam Allowance Check

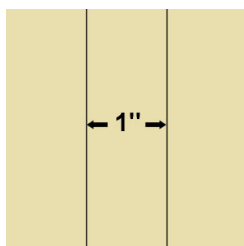
To check if your seam is accurate, cut three 1 1/2" x 3" pieces from scrap fabric.

Sew the pieces together along the 3" side, using what you believe is a 1/4" seam.

Press away from the center piece.

Measure.

The center piece should be exactly 1" wide.



If, when you measure, the center is less than 1", your seam allowance is too large. You need to move the needle to the right.

If it's more than 1", your seam allowance is too small and you need to move the needle to the left.

Consult your machine's owner's manual for instructions on moving your needle position.

Repeat this check until your center strip measures correctly.

KEY	CUTTING INSTRUCTIONS	WOF=width of fabric
A	(20) 2" x WOF. (7) 5 1/2" x WOF. Subcut: (44) 5 1/2" squares (7) 8" x WOF. Subcut: (100) 2 5/8" x 8" rectangles	
B	(5) 4" x WOF. (4) 4 1/2" x WOF. Subcut: (30) 4 1/2" squares	
C	(5) 4" x WOF. (4) 4 1/2" x WOF. Subcut: (30) 4 1/2" squares	
D	(5) 4" x WOF. (4) 4 1/2" x WOF. Subcut: (30) 4 1/2" squares	
E	(5) 4" x WOF. (4) 4 1/2" x WOF. Subcut: (30) 4 1/2" squares	
F	(4) 5 1/2" x WOF. Subcut: (25) 5 1/2" squares	
G	(4) 6 1/4" x 101" fussy cut on border stripe	
H	(11) 2 1/2" x WOF for binding	

**NOTE:** Because of all the seams to match, it is recommended that you press all seams open.

# Crown Jewel

## Block A:

Make 25

Step 1: Set aside ten 4½" squares from each of the four fabrics for block B. Cut the remaining 4½" squares once diagonally. Triangles will be slightly larger than white solid strips.

Step 2: Stitch the remaining triangles to the cream solid 2⅝" x 8" rectangles, centering the triangle on the white strip. Square to 5½". Make 25 of each unit.

Fabrics D & E



Fabrics E & B



Fabrics C & B

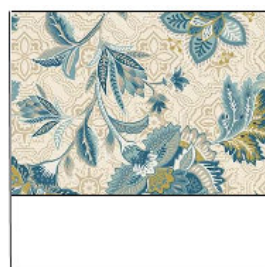


Fabrics D & C



Step 3: Stitch one white 2" x WOF strip to one fabric B 4" x WOF strip. Make five stripsets. Cut into (30) 5½" pieces. (five units of each color will be reserved for block B)

Step 4: Repeat step 3 using the remaining white 2" x WOF strips and the 4" strips of fabrics C, D and E. Make 25 of each color combination.



Step 5: Combine the units with the fabric F 5½" squares to complete the blocks. Square to 15½". Make 25 blocks.





# Crown Jewel

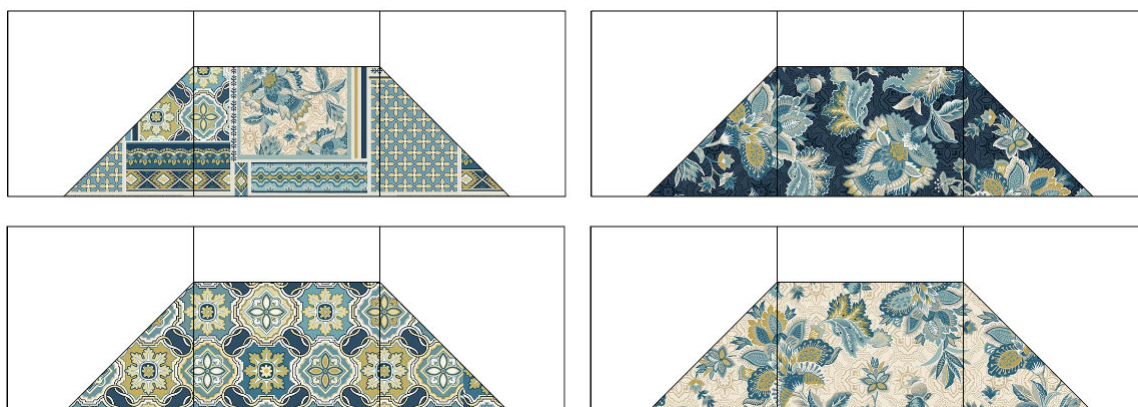
## Block B:

Make 5 of each color combination

Step 6: Use the fabric B-E  $4\frac{1}{2}$ " squares and fabric A  $5\frac{1}{2}$ " square to make quick corners (see technique sheet on page 7). Square to  $5\frac{1}{2}$ ". Make five of each color combination.



Step 7: Combine the units in step 6 with the units reserved in step 3. Trim to  $5\frac{1}{2}$ " x  $15\frac{1}{2}$ ". Make five blocks in each color combination.



## Assembly:

Step 8: Use the assembly diagram on page 6 to stitch the blocks into rows, then stitch the rows together, adding four fabric A  $5\frac{1}{2}$ " squares to the corners, to complete the quilt center.

Step 9. Stitch one fabric G  $6\frac{1}{4}$ " x 101" strip to each side of the quilt, mitering corners.

## Finishing:

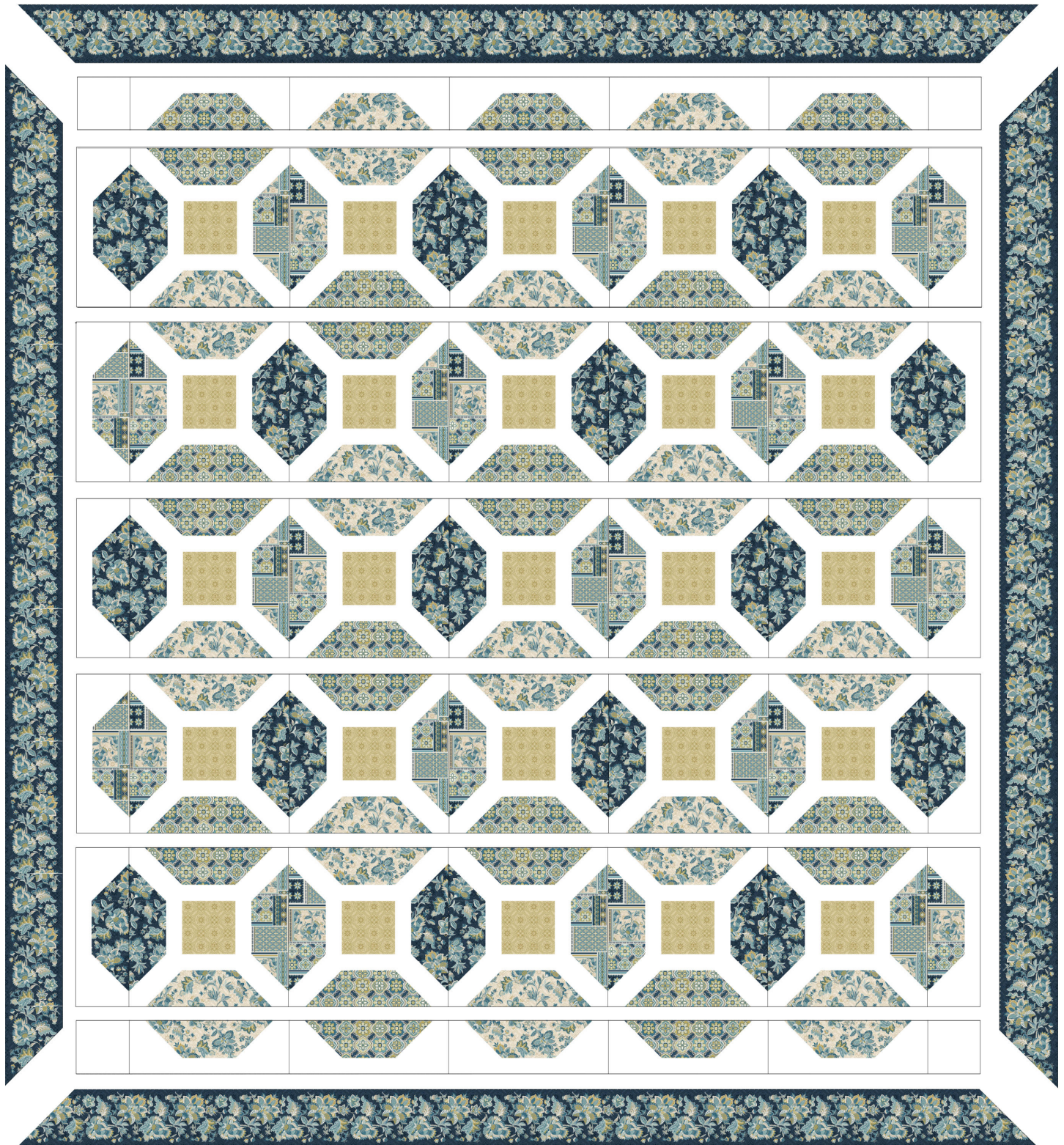
Step 10: Layer, baste and quilt as desired.

Step 11: Bind with eleven fabric H  $2\frac{1}{2}$ " x WOF strips.



# Crown Jewel

## Assembly Diagram







# Crown Jewel

## Quick Corners

Draw a diagonal line on the wrong side of the small squares (black line).

Layer one square, right sides together, on top of the unit.

Stitch on the drawn line (red line).

Cut away excess, leaving a  $\frac{1}{4}$ " seam allowance.

Press seam open.

