

Fun-der the Sea

SIZE: 44" x 54-3/4" • LEVEL: Intermediate • PATTERN BY: Marsha Evans Moore • FABRIC COLLECTION: Aquatic World



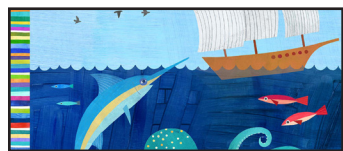
THIS IS A DIGITAL REPRESENTATION OF THE QUILT TOP, FABRIC MAY VARY.

PLEASE NOTE: BEFORE BEGINNING YOUR PROJECT, CHECK FOR ANY PATTERN UPDATES AT MICHAELMILLERFABRICS.COM'S FREE PROJECTS SECTION.

p.212.704.0774 | info@michaelmillerfabrics.com | www.michaelmillerfabrics.com



Fun-der the Sea



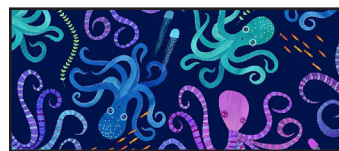
FABRIC A
DDC11352_Multi
1 Panel



FABRIC B
DC11355_Sky
5/8 yard



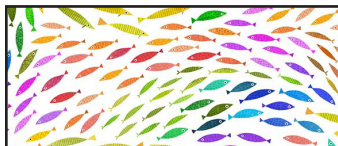
FABRIC C
DC11356_Sky
1/4 yard



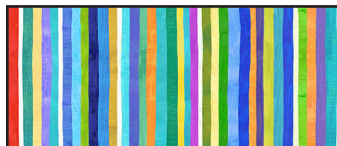
FABRIC D
DC11357_Navy
1/2 yard



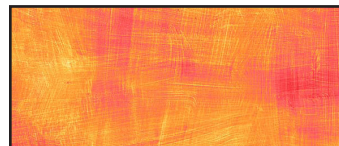
FABRIC E
DC11358_White
1/2 yard



FABRIC F
DC11360_White
1/2 yard



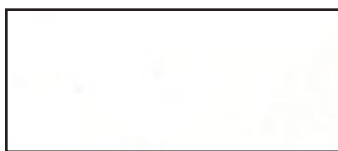
FABRIC G
DC11362_Multi
1/2 yard



FABRIC H
DC11363_Orange
1/2 yard *



FABRIC I
DC11363_Navy
3/8 yards



FABRIC J
sc5333_Bright White
3/8 yard

* includes binding



Fun-der the Sea

KEY	CUTTING INSTRUCTIONS
A	Centering design, <i>fussy cut</i> : 24-1/2" x 43-3/4".
B	(2) Wave Template 1 and (2) Wave Template 1 reversed. (1) Wave Template 2 and (1) Wave Template 2 reversed.
C	(2) 3" x 41" borders.
D	(2) Wave Template 1 and (2) Wave Template 1 reversed.
E	(1) Wave Template 1 and (1) Wave Template 1 reversed.
F	(1) Wave Template 1 and (1) Wave Template 1 reversed.
G	(5) 2" x 42" strips; sew ends together. Subcut (2) 2" x 55-3/4" borders and (2) 2" x 45" borders.
H	FOR BINDING: (5) 2-1/4" x 42" strips, sew short ends together. (4) 2" squares.
I	(2) 7-1/4" squares.
J	(4) 2-1/4" x 42" strips, sew short ends together. Subcut (2) 2" x 43-3/4" borders and (2) 2" x 24-1/2" borders.
K	Batting 52" x 64"

ADDITIONAL MATERIALS

3 yards backing fabric

Template plastic

Sewing machine

Thread to match fabrics

Basic sewing supplies

Rotary cutter, ruler and mat

Optional:

For raw edge appliqué: paper backed fusible webbing

For turned edge appliqué: freezer paper or plain paper for templates.

Fun-der the Sea

APPLIQUÉ BORDERS

1. Prepare the top edge of all Wave Templates 1 and 2 using your preferred appliqué method. Mark the dashed line for wave placement on the right side of wave template 1 pieces. Fabric **B** Template 1 shown below.

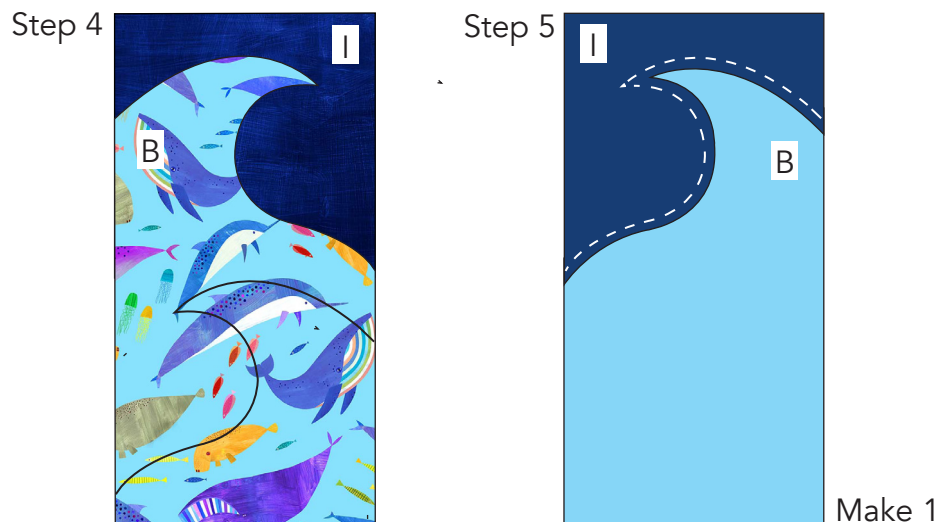
2. Place (1) **B** Wave Template 1 on (1) **I** 7-1/4" square so the top edge of the wave is 1-1/4" from the top edge of the square. Pin, baste or fuse the wave in place. Sew the curved edges of the wave in place.

3. Trim the **I** fabric square 1/4" from the stitching.



4. Place (1) **B** Wave Template 1 reversed on (1) **I** 7-1/4" square so the top edge of the wave is 1-1/4" from the top edge of the square. Pin, baste or fuse the wave in place. Sew the curved edges of the wave in place.

3. Trim the **I** fabric square 1/4" from the stitching.



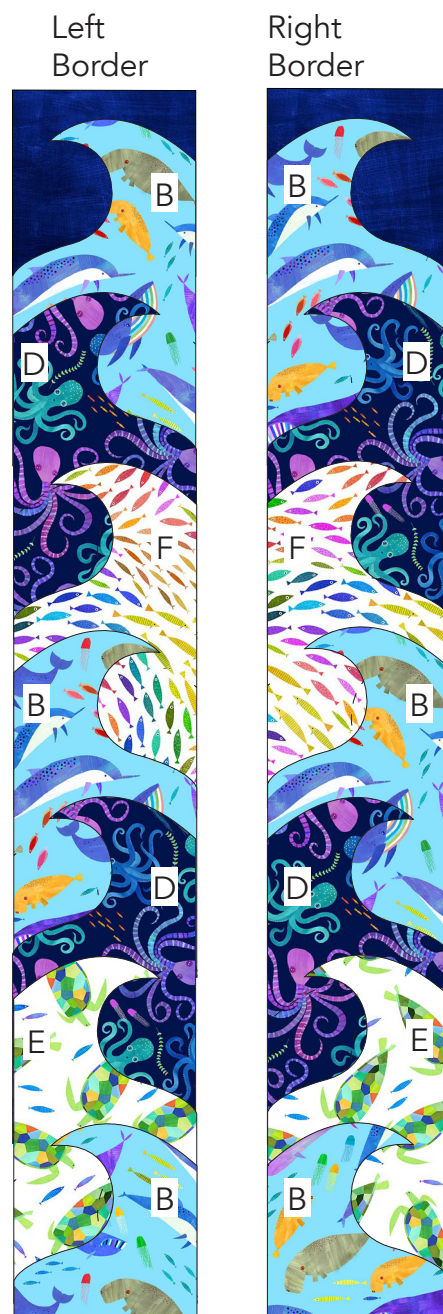
Fun-der the Sea

6. Place (1) **D** Wave Template 1 reversed on **B** Wave Template 1 matching the top edge to the marked wave line. Pin, baste or fuse the top edge in place. Sew the curved edge of the wave in place. Following step 3, trim the **D** fabric 1/4" from stitching.

7. Following step 4, sew together **F** and **D** Wave Templates 1 alternating with **B** and **E** Wave Template 1 reversed.

8. Sew (1) **B** Wave Template 2 to the bottom. Trim top edge of border so border measures 7-1/4" x 46-3/4" including seam allowance. Make 1.

9. Following steps 6-8, make the right border using **B**, **F** and **D** Wave Template 1 reversed alternating with **D**, **B** and **E** Wave Template 1. Sew (1) **B** Template 2 reversed to lower edge. Make 1.



Make 1 each

QUILT ASSEMBLY

10. Following the Quilt Layout on page 5, sew (1) **J** 2" x 43-3/4" borders to each side of (1) **A** center panel. Sew (2) **H** 2" squares to ends of (2) **J** 2" x 24-1/2" borders. Sew to top and bottom of quilt.

11. Sew left and right appliqué borders to sides of quilt.

12. Sew (2) **C** 3" x 41" borders to the top and bottom of quilt.

13. Trim ends of **G** border strips diagonally. Sew short sides of (2) **G** 2" x 55-3/4" to sides of quilt beginning and ending stitching 1/4" from ends of the seam. Sew (2) **G** 2" x 45" strips to top and bottom of the quilt in the same way. Sew the diagonal ends of adjacent borders together.

Fun-der the Sea

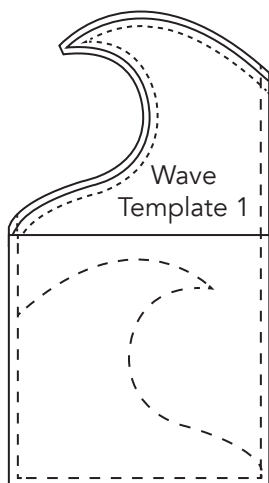
Quilt Layout



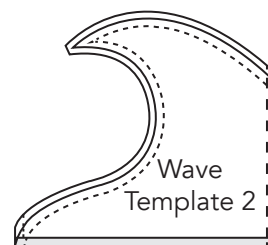
FINISHING: Layer quilt top, batting and backing together to form quilt sandwich. Baste and quilt as desired. Bind using five fabric **H** 2-1/4" strips.

Fun-der the Sea

Templates

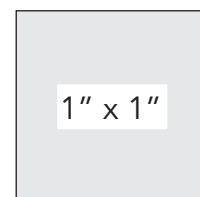


Upper Wave Template. Make 2 copies. Use as is for Wave Template 2. Overlap the shaded area of the Upper Wave Template with the top edge of the Lower Wave Template 2 to make Wave Template 1. Glue or tape the pieces together.



For turned under appliqué, cut curved edge of wave along the outer solid line.

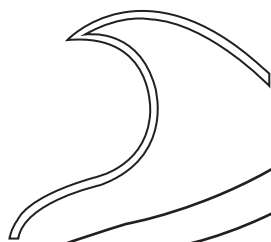
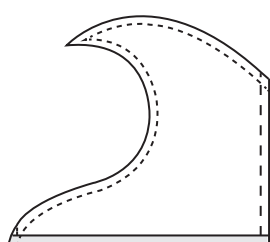
For raw edge appliqué, cut curved edge of wave along the inner solid line.



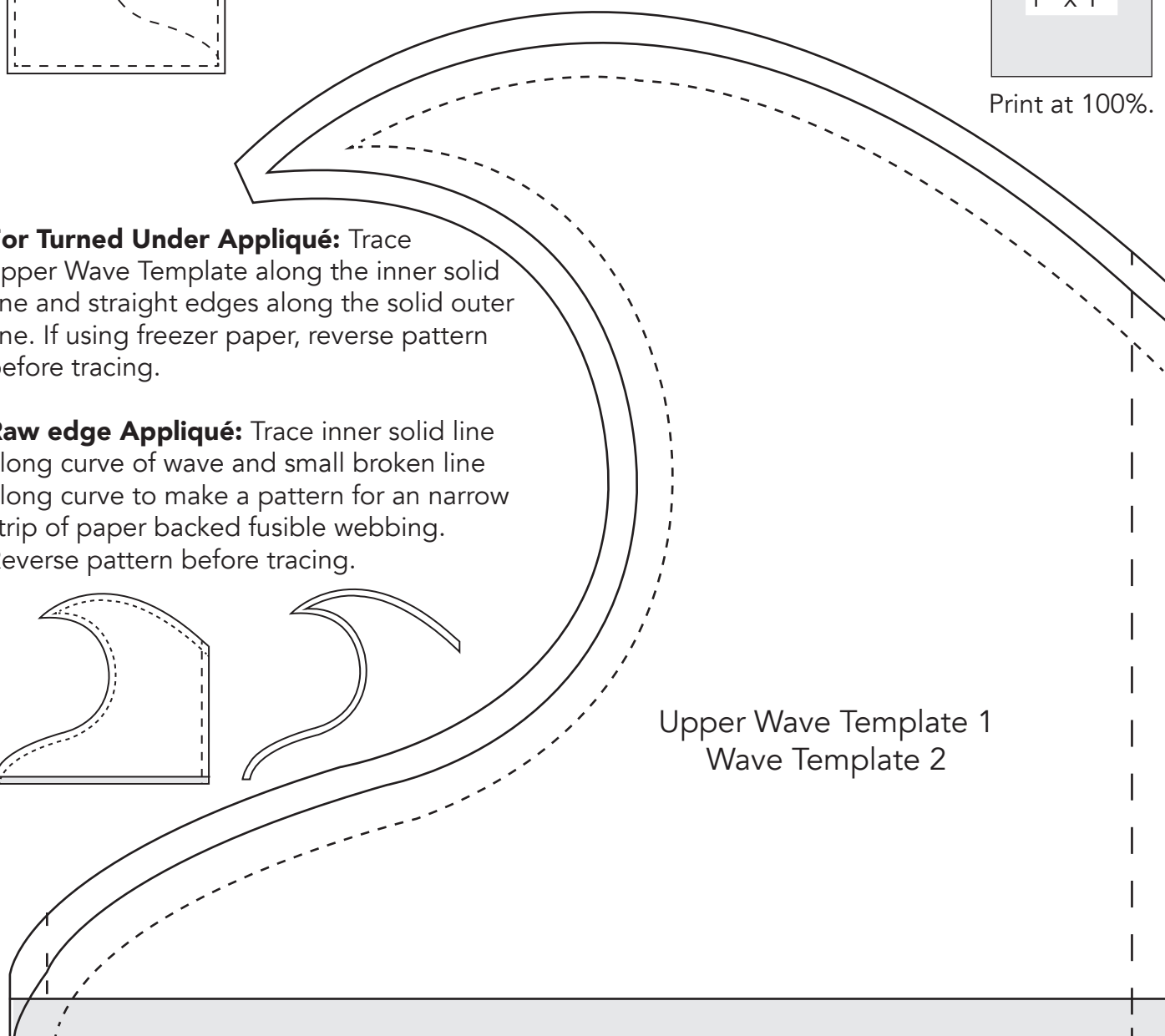
Print at 100%.

For Turned Under Appliqué: Trace upper Wave Template along the inner solid line and straight edges along the solid outer line. If using freezer paper, reverse pattern before tracing.

Raw edge Appliqué: Trace inner solid line along curve of wave and small broken line along curve to make a pattern for a narrow strip of paper backed fusible webbing. Reverse pattern before tracing.



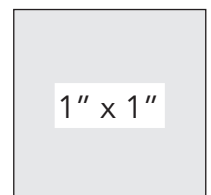
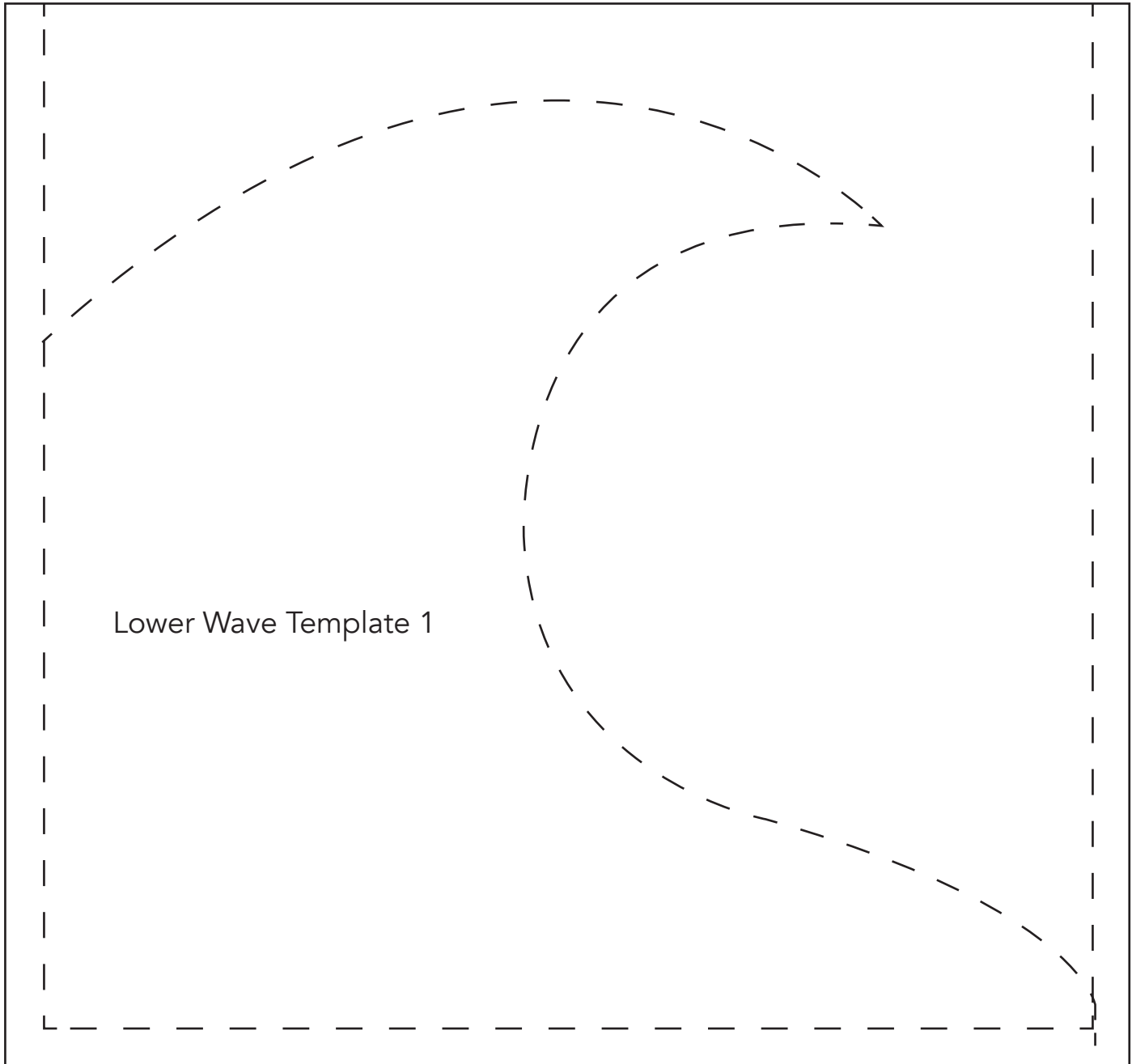
Upper Wave Template 1
Wave Template 2





Fun-der the Sea

Templates



Print at 100%.