

michael miller FABRICS

Garden Path

SIZE: 45-1/2" x 60" • LEVEL: Intermediate • PATTERN BY: Marsha Evans Moore • FABRIC COLLECTION: Botanical Garden



THIS IS A DIGITAL REPRESENTATION OF THE QUILT TOP, FABRIC MAY VARY.

PLEASE NOTE: BEFORE BEGINNING YOUR PROJECT, CHECK FOR ANY PATTERN UPDATES AT MICHAELMILLERFABRICS.COM'S FREE PROJECTS SECTION.

p.212.704.0774 | info@michaelmillerfabrics.com | www.michaelmillerfabrics.com



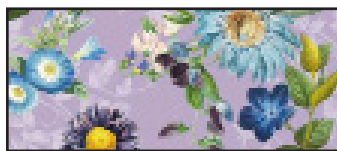
Garden Path



FABRIC A
DDC11466_Black
1/4 yard



FABRIC B
DDC11466_Breeze
3/8 yard



FABRIC C
DDC11467_Iris
1/4 yard



FABRIC D
DDC11468_Black
3/8 yard



FABRIC E
DC11469_Aloe
3/8 yard



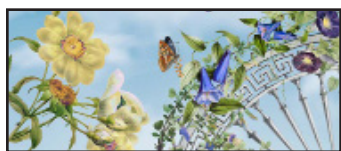
FABRIC F
DC11469_Jam
1/2 yard



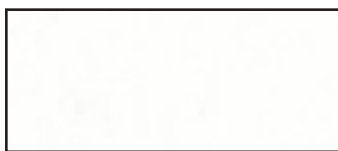
FABRIC G
DDC11472_Sky
3/4 yard



FABRIC H
DDC11473_Black
1/4 yard



FABRIC I
DDC11474_Multi
1 Panel



FABRIC J
sc5333_Soft White
5/8 yard



Garden Path

KEY	CUTTING INSTRUCTIONS
A	(2) Triangle Templates and (2) Triangle Templates reversed.
B	(2) 2-1/4" x 35-1/2" borders. (4) Triangle Templates and (4) Triangle Templates reversed.
C	(3) Triangle Templates and (3) Triangle Templates reversed.
D	(4) 2" x 42" strips, sew short ends together. Subcut (2) 1-1/2" x 44-1/2" borders and (2) 1-1/2" x 25-1/2" borders.
E	(5) 2" x 42" strips, sew short ends together. Subcut (2) 2" x 50" borders and (2) 2" x 38-1/2" borders.
F	FOR BINDING: (6) 2-1/4" x 42" strips, sew short ends together.
G	(9) 3" x 42" strips; sew short ends together matching stripes. Subcut (2) 3" x 60-1/2" borders and (2) 3" x 46" borders.
H	(2) Triangle Templates and (2) Triangle Templates reversed.
I	Centering design, <i>fussy cut</i> : 23-1/2" x 44-1/2" rectangle.
J	(5) 1-1/4" x 42" strips, sew short ends together. Subcut (2) 1-1/4" x 53" borders and (2) 1-1/4" x 41" borders. (10) 1" x 42" strips, sew short ends of (5) strips together. Subcut (4) 1" x 46-1/2" strips, (16) 1" x 5-1/2" rectangles and (14) Bar Templates.
	Batting 54" x 68"

ADDITIONAL MATERIALS

2-3/4 yards backing fabrics.
Template plastic

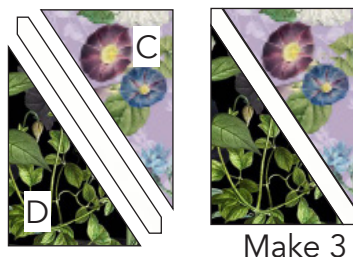
Thread to match fabrics
Basic sewing supplies

Sewing machine
Rotary cutter, ruler and mat

Garden Path

PATCHWORK BORDERS

1. Sew (1) **C** Triangle reversed and (1) **D** Triangle to opposite sides of (1) **J** Bar to make a rectangle unit. Rectangle unit should measure 4-1/2" x 6-1/2" including seam allowances. Make 3.

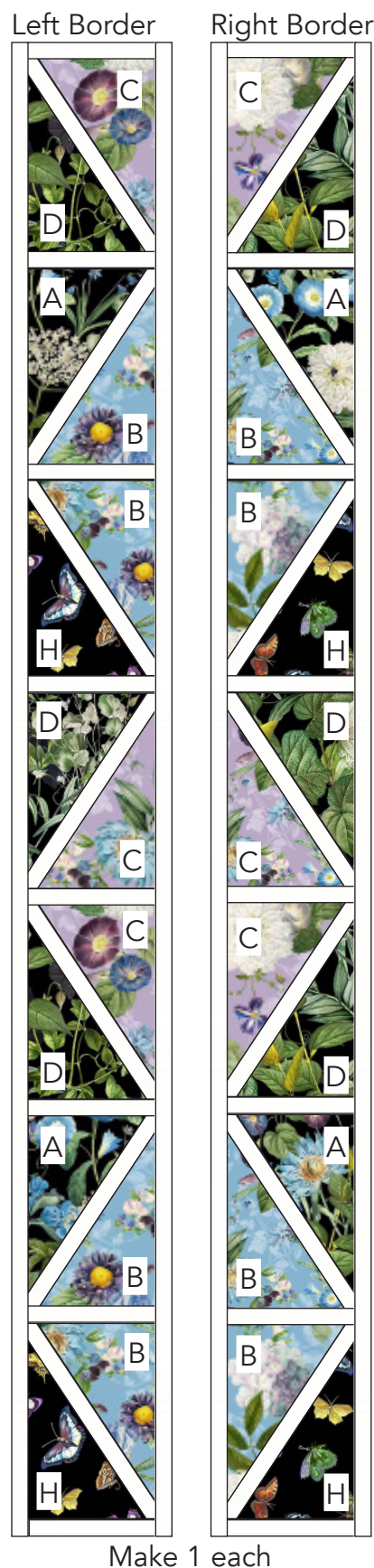


2. Following step 1, make rectangle units using the fabrics as shown. Make the number indicated.



3. Arrange (8) **J** 1" x 5-1/2" rectangles alternating with (7) rectangle units noting position of fabrics and orientation of diagonal Bars. Note: some rectangular units are rotated 180°. Sew together the rectangles and rectangle units to make the left and right patchwork borders.

4. Sew (1) **J** 1" x 46-1/2" strip to each side of patchwork borders. Patchwork borders should measure 46-1/2" x 5-1/2" including seam allowance. Make 1 each.





Garden Path

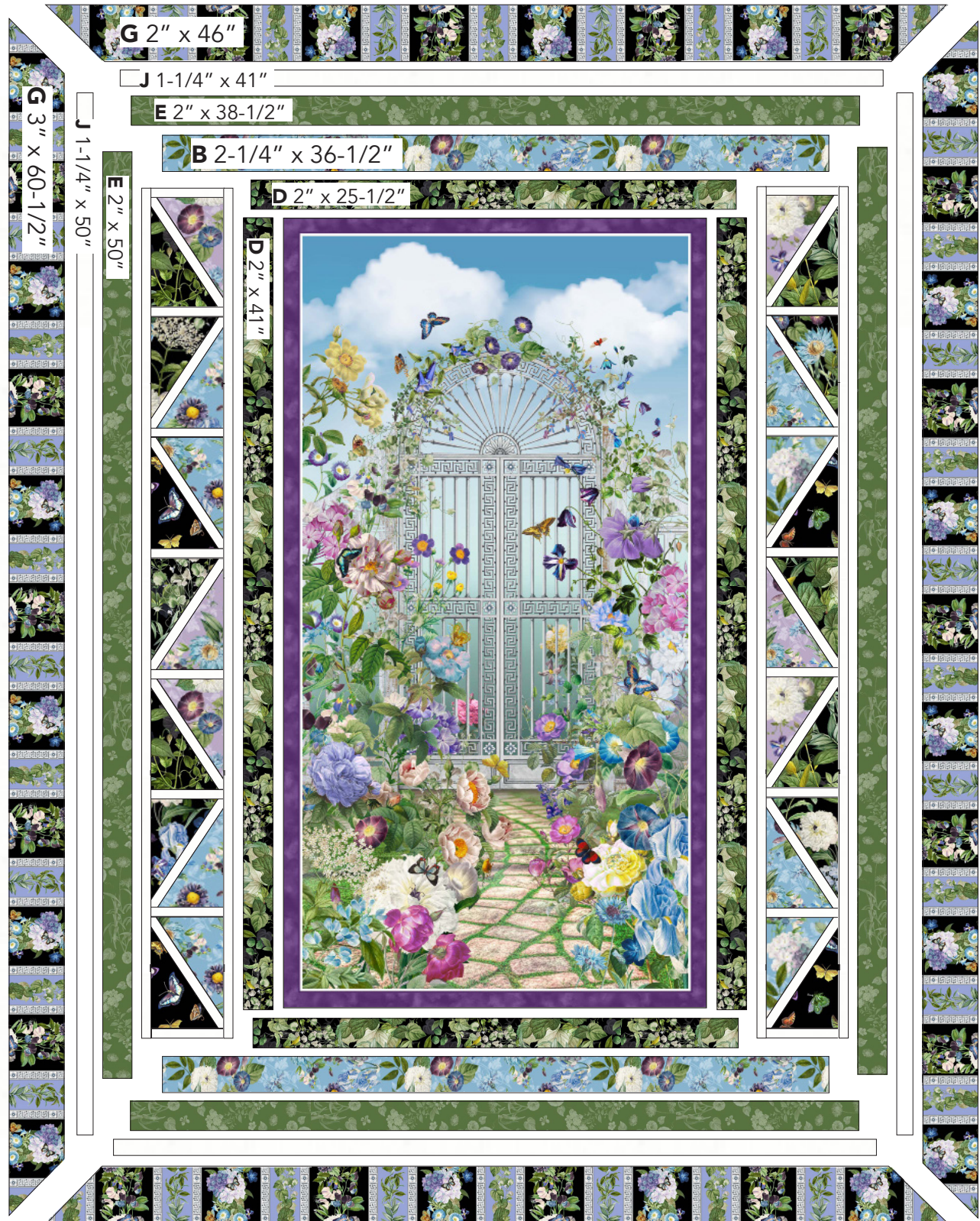
BORDERS

5. Following the Quilt Layout on page 5, sew (1) **D** 1-1/2" x 44-1/2" border to each side of **I** Panel. Sew (2) **D** 1-1/2" x 25-1/2" borders to top and bottom of the quilt.
6. Sew (1) left and (1) right patchwork border to sides of quilt. Sew (2) **B** 2-1/4" x 36-1/2" borders to top and bottom of the quilt.
7. Sew (1) **E** 2" x 50" border to each side of quilt. Sew (2) **E** 2" x 39-1/2" borders to top and bottom of the quilt.
8. Sew (1) **J** 1-1/4" x 53" border to each side of quilt. Sew (2) **J** 1-1/4" x 41" borders to top and bottom of the quilt.
9. Trim ends of (2) **G** 3" x 61" borders and (2) **G** 2" x 47-1/2" borders diagonally. Sew (1) **G** 3" x 61" border to each side of quilt beginning and ending stitching 1/4" from edges of quilt. Sew (2) **G** 2" x 47-1/2" borders to top and bottom of quilt in the same manner. Sew diagonal ends of adjacent borders together.

FINISHING: Layer quilt top, batting and backing together to form quilt sandwich. Baste and quilt as desired. Bind using six fabric **F** 2-1/4" strips.

Garden Path

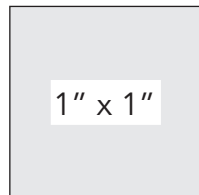
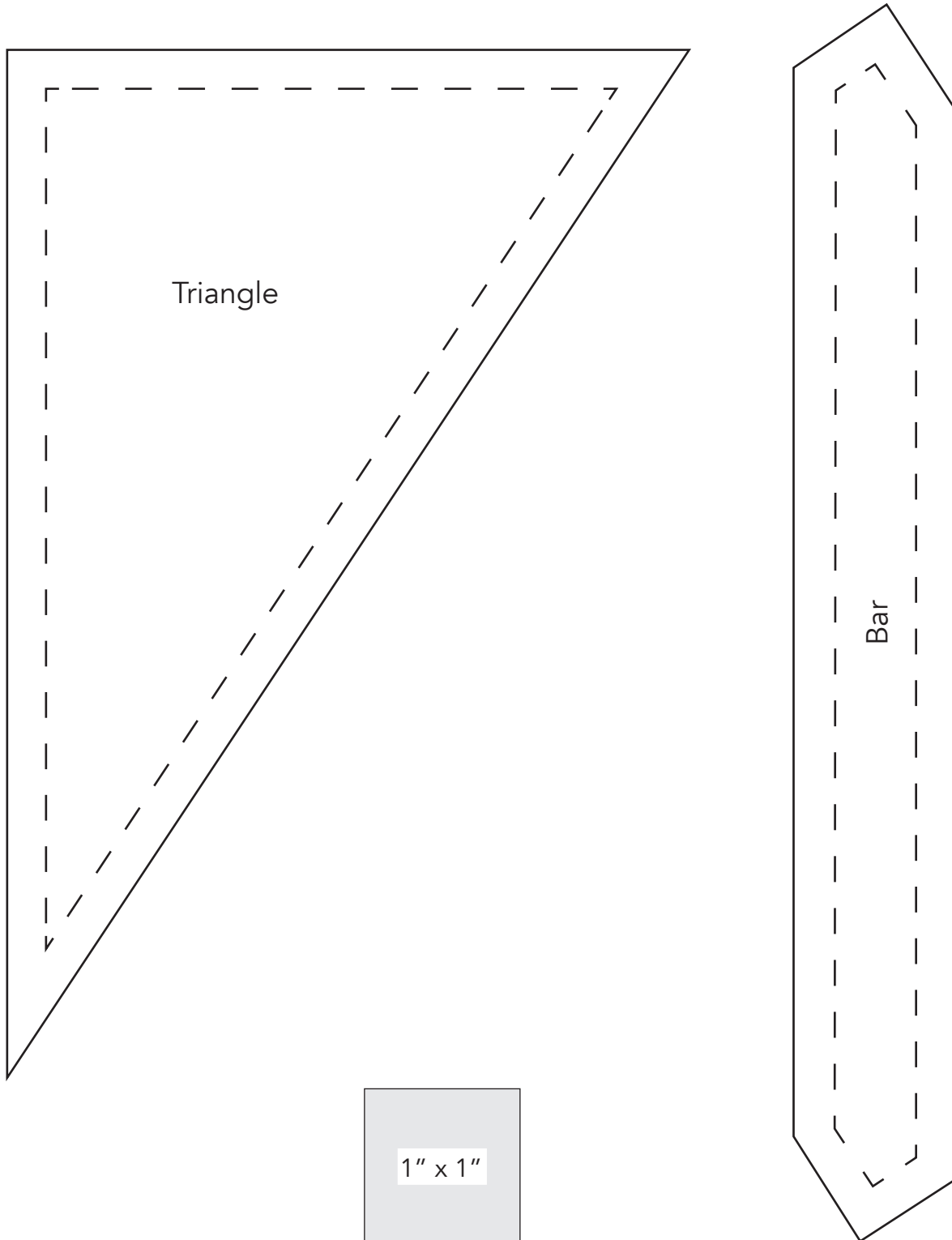
Quilt Layout





Garden Path

Templates



Print at 100%.