

michael miller FABRICS

# Flora Bella

SIZE: 60" x 80" • LEVEL: Intermediate • PATTERN BY: The Whimsical Workshop • Flora Bella Collection  
PATTERN AVAILABLE ON: [michaelmillerfabrics.com](http://michaelmillerfabrics.com)



THIS IS A DIGITAL REPRESENTATION OF THE QUILT TOP, FABRIC MAY VARY.

**PLEASE NOTE:** BEFORE BEGINNING YOUR PROJECT, CHECK FOR ANY PATTERN UPDATES AT [MICHAELMILLERFABRICS.COM](http://MICHAELMILLERFABRICS.COM)'S FREE PROJECTS SECTION.

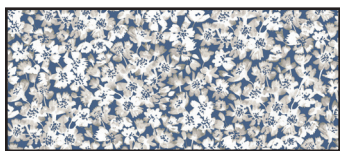
p.212.704.0774 | [info@michaelmillerfabrics.com](mailto:info@michaelmillerfabrics.com) | [www.michaelmillerfabrics.com](http://www.michaelmillerfabrics.com)



# Flora Bella



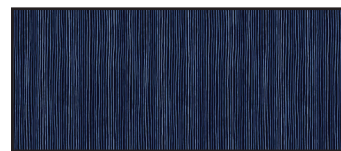
**FABRIC A**  
CX11417-Indigo  
2/3 yard



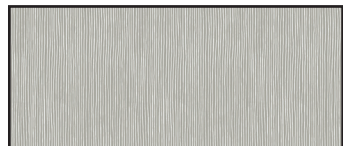
**FABRIC B**  
CX11415-Denim  
1/4 yard



**FABRIC C**  
CX11412-Blue  
3/8 yard



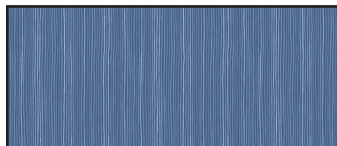
**FABRIC D**  
CX11419-Indigo  
1 yard



**FABRIC E**  
CX11419-Wind  
1/3 yard



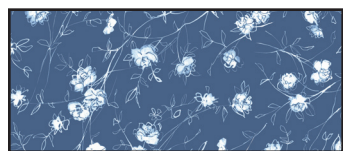
**FABRIC F**  
CX11419-Blue  
2/3 yard



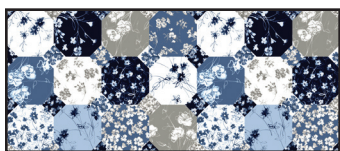
**FABRIC G**  
CX11419-Denim  
2/3 yard



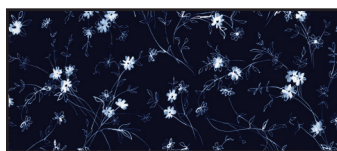
**FABRIC H**  
SC5333-Bright White  
1-1/2 yards



**FABRIC I**  
CX11413-Denim  
3/8 yard



**FABRIC J**  
CX11418-Multi  
2-1/8 yards



**FABRIC K**  
CX11412-Indigo  
7/8 yard

**BACKING**  
(your choice)  
5 yards



# Flora Bella

KEY	CUTTING INSTRUCTIONS
<b>A</b>	(1) 40-1/2" x 20-1/2" Width of Fabric (WOF) strip.
<b>B</b>	(2) 1-1/2" x 40-1/2" WOF strips. (2) 1-1/2" x 22-1/2" WOF strips.
<b>C</b>	(2) 2" x WOF strips, sub-cut (2) 2" x 24-1/2" strips and (4) 2" squares. (3) 2" x WOF strips, sew short ends together. Subcut (2) 2" x 44-1/2" WOF strips.
<b>D</b>	(1) 3-1/2" x WOF strip, sub-cut (4) 3-1/2" squares and (8) 2-7/8" squares. (3) 2" x WOF strips, sew short ends together. Subcut (2) 2" x 44-1/2" WOF strips. (2) 2" x WOF strips, sub-cut (2) 2" x 24-1/2" strips. (4) 1-1/2" x WOF strips, sew short ends together. Subcut (2) 1-1/2" x 68-1/2" strips. (3) 1-1/2" x WOF strips, sew short ends together. Subcut (2) 1-1/2" x 50-1/2" strips. (16) Template 1 triangles.
<b>E</b>	(1) 2-7/8" x WOF strip, sub-cut (8) 2-7/8" squares. (16) Template 2 triangles.
<b>F</b>	(2) 3-7/8" x WOF strips, sub-cut (11) 3-7/8" squares. (22) Template 4 triangles.
<b>G</b>	(2) 3-7/8" x WOF strips, sub-cut (11) 3-7/8" squares. (22) Template 3 triangles.
<b>H</b>	(2) 4-1/2" x WOF strips, sub-cut (16) 4-1/2" squares. (3) 3-7/8" x WOF strips, sub-cut (22) 3-7/8" squares. (1) 1-1/2" x WOF strip, sub-cut (4) 1-1/2" x 9 1/2" strips. (16) Template 1 triangles. (16) Template 2 triangles. (22) Template 3 triangles. (22) Template 4 triangles.
<b>I</b>	(4) 1-1/2" x WOF strips, sew short ends together. Subcut (2) 1-1/2" x 70-1/2" strips. (3) 1-1/2" x WOF strips, sew short ends together. Subcut (2) 1-1/2" x 52-1/2" strips.



# Flora Bella

KEY	CUTTING INSTRUCTIONS
J	Fussy cut (2) 4-1/2" x 72-1/2" Length of Fabric (LOF) strips, centered on a row of patches. Fussy cut (2) 4-1/2" x 60-1/2" LOF strips, centered on a row of patches.
K	(2) 1-1/2" x 42-1/2" WOF strips, piece as needed. (2) 1-1/2" x 24-1/2" WOF strips. <b>FOR BINDING:</b> (7) 2-1/2" x WOF strips, sew short ends together.
	<b>FOR BACKING:</b> (2) 88" x WOF strips. Piece the strips together and trim to make the 68" x 88" pieced backing.
	Batting 68" x 88"



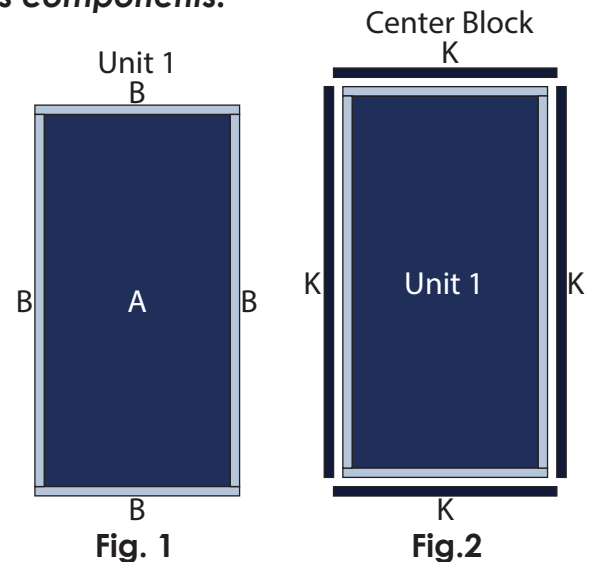
# Flora Bella

**Note:** The arrows in the figures represent the fabric print direction. Pay attention to the fabric and unit orientations when assembling the various components.

## Block Assembly

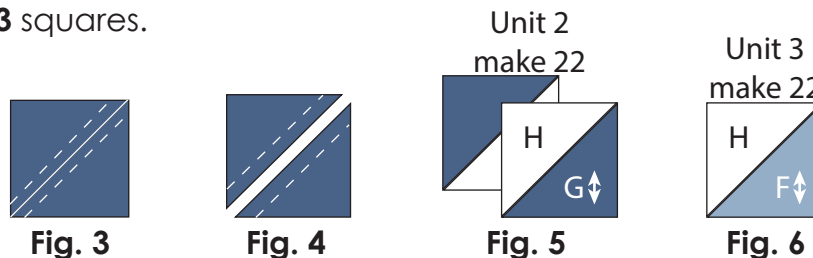
**1.** Sew (1) 1-1/2" x 40-1/2" Fabric **B** strip to each side of the 20-1/2" x 40-1/2" Fabric **A** rectangle. Sew (1) 1-1/2" x 22-1/2" Fabric **B** strip to the top and to the bottom of the Fabric **A** rectangle to make the **Unit 1** rectangle (**Fig. 1**).

**2.** Sew (1) 1-1/2" x 42-1/2" Fabric **K** strip to each side of the **Unit 1** rectangle. Sew (1) 1-1/2" x 24-1/2" Fabric **K** strip to the top and to the bottom of the **Unit 1** rectangle to make the 24-1/2" x 44-1/2" **Center Block** (**Fig. 2**).



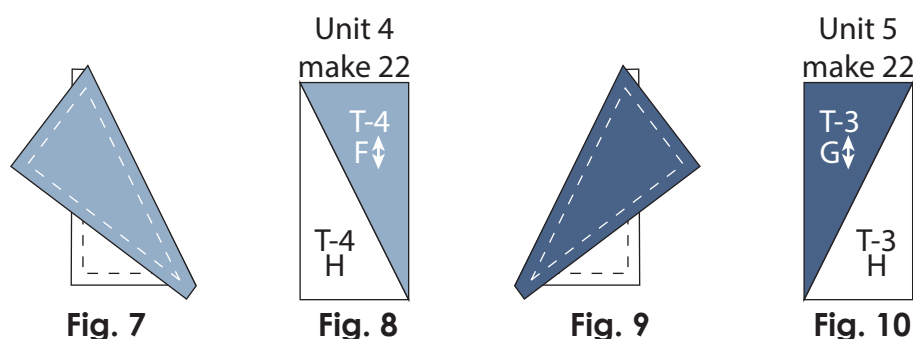
**3.** Place (1) 3-7/8" Fabric **G** square on top of (1) 3-7/8" Fabric **H** square, right sides together. Draw a line across the diagonal of the top square (**Fig. 3**). Sew 1/4" away from each side of the drawn diagonal line (**Fig. 3**). Cut the (2) squares apart on the drawn diagonal line (**Fig. 4**) to make (2) half-square triangles. Trim the half-square triangles to measure 3-1/2" square to make (2) **Unit 2** squares (**Fig. 5**). Repeat to make (22) **Unit 2** squares total.

**4.** Repeat **Step 3** and refer to **Figure 6** for fabric identification, placement and orientation to make (22) **Unit 3** squares.



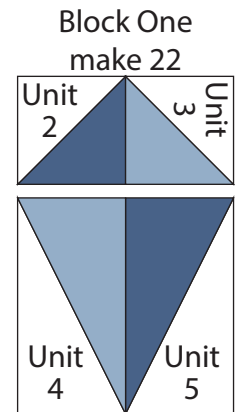
**5.** Place (1) Fabric **F** Template 4 triangle on top of (1) Fabric **H** Template 4 triangle right sides together (**Fig. 7**). Sew the (2) triangles together. Press open to make (1) 3-1/2" x 6-1/2" **Unit 4** rectangle (**Fig. 8**). Repeat to make (22) **Unit 4** rectangles total.

**6.** Place (1) Fabric **G** Template 3 triangle on top of (1) Fabric **H** Template 3 triangle right sides together (**Fig. 9**). Sew the (2) triangles together. Press open to make (1) 3-1/2" x 6-1/2" **Unit 5** rectangle (**Fig. 10**). Repeat to make (22) **Unit 5** rectangles total.



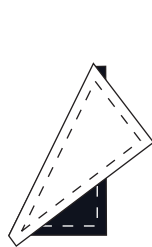
# Flora Bella

7. Sew (1) **Unit 2** square to the left side of (1) **Unit 3** square to make the top row (**Fig. 11**). Sew (1) **Unit 4** rectangle to the left side of (1) **Unit 5** rectangle lengthwise to make the bottom row. Sew together the (2) rows to make the 6-1/2" x 9-1/2" **Block One** rectangle (**Fig. 11**). Repeat to make (22) **Block One** rectangles total.



**Fig. 11**

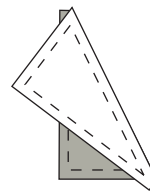
8. Place (1) Fabric **H** Template 1 triangle on top of (1) Fabric **D** Template 1 triangle right sides together (**Fig. 12**). Sew the (2) triangles together. Press open to make (1) 2-1/2" x 4-1/2" **Unit 6** rectangle (**Fig. 13**). Repeat to make (16) **Unit 6** rectangles total.



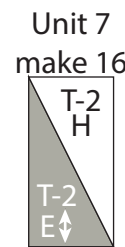
**Fig. 12**



**Fig. 13**

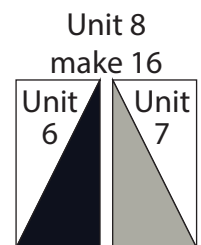


**Fig. 14**



**Fig. 15**

10. Sew (1) **Unit 6** rectangle to the left side of (1) **Unit 7** rectangle lengthwise to make (1) 4-1/2" **Unit 8** square (**Fig. 16**). Repeat to make (16) **Unit 8** squares total.



**Fig. 16**

11. Place (1) 2-7/8" Fabric **D** square on top of (1) 2-7/8" Fabric **E** square, right sides together. Draw a line across the diagonal of the top square from the upper right corner to the lower left corner (**Fig. 17**). Sew 1/4" away from each side of the drawn diagonal line (**Fig. 17**). Cut the (2) squares apart on the drawn diagonal line (**Fig. 18**) to make (2) half-square triangles. Trim the half-square triangles to measure 2-1/2" square to make (1) **Unit 9A** square and (1) **Unit 9B** square (**Fig. 19**). Repeat to make (8) sets of **Unit 9** square total.



**Fig. 17**



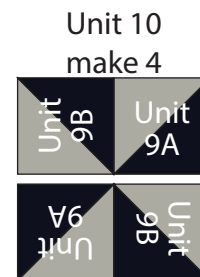
**Fig. 18**



**Fig. 19**

# Flora Bella

12. Sew (1) **Unit 9B** square to the left side of (1) **Unit 9A** square to make the top row. Sew (1) **Unit 9A** square to the left side of (1) **Unit 9B** square to make the bottom row. Sew together the (2) rows lengthwise to make (1) 4-1/2" **Unit 10** square (**Fig. 20**). Repeat to make (4) **Unit 10** squares total.



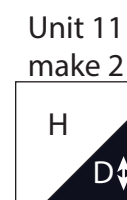
**Fig. 20**

13. Place (1) 3-1/2" Fabric **D** square on the bottom right corner of (1) 4-1/2" Fabric **H** square, right sides together (**Fig. 21**). Sew across the diagonal of the smaller square from the upper right corner to the lower left corner (**Fig. 21**). Flip open the triangle formed and press. Trim away the excess fabric from behind the triangle 1/4" away from the sewn seam to make (1) **Unit 11** square (**Fig. 22**). Repeat to make a second **Unit 11** square.

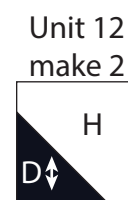
14. Repeat **Step 13** and refer to **Figure 23** for fabric identification, placement, seam direction and orientation to make (2) **Unit 12** squares.



**Fig. 21**



**Fig. 22**



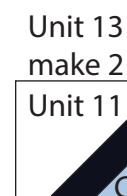
**Fig. 23**

15. Place (1) 2" Fabric **C** square on the bottom right corner of (1) **Unit 11** square, right sides together (**Fig. 24**). Sew across the diagonal of the smaller square from the upper right corner to the lower left corner (**Fig. 24**). Flip open the triangle formed and press. Trim away the excess fabric from behind the triangle 1/4" away from the sewn seam to make (1) **Unit 13** square (**Fig. 25**). Repeat to make a second **Unit 13** square.

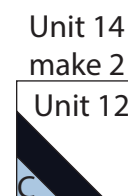
16. Repeat **Step 15** and refer to **Figure 26** for component identification, placement, seam direction and orientation to make (2) **Unit 14** squares.



**Fig. 24**

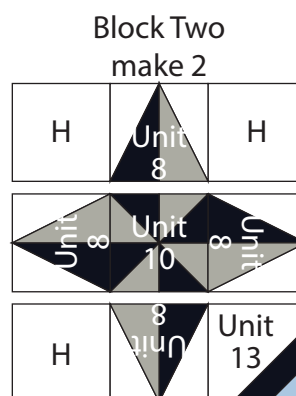


**Fig. 25**



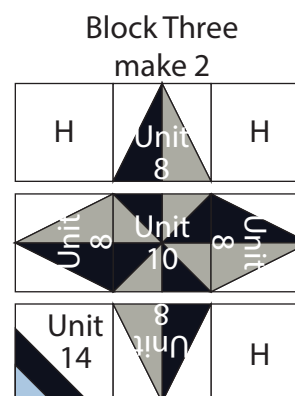
**Fig. 26**

17. Sew (1) 4-1/2" Fabric **H** square to each side of (1) **Unit 8** square to make the top row. Sew (1) **Unit 8** square to each side of (1) **Unit 10** square to make the middle row. Sew together (1) 4-1/2" Fabric **H** square, (1) **Unit 8** square and (1) **Unit 13** square, in that order from left to right, to make the bottom row. Sew together the (3) rows lengthwise to make the 12-1/2" **Block Two** square (**Fig. 27**). Repeat to make a second **Block Two** square.



**Fig. 27**

18. Repeat **Step 17** and refer to **Figure 28** for component identification, placement and orientation to make (2) **Block Three** squares.



**Fig. 28**

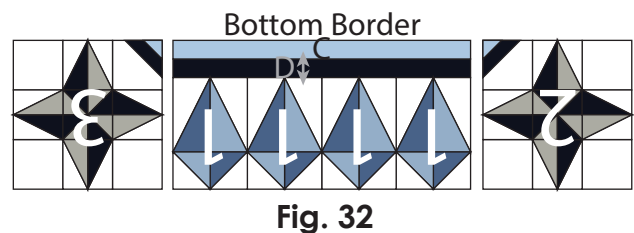
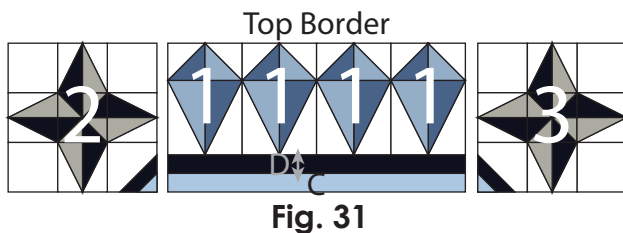
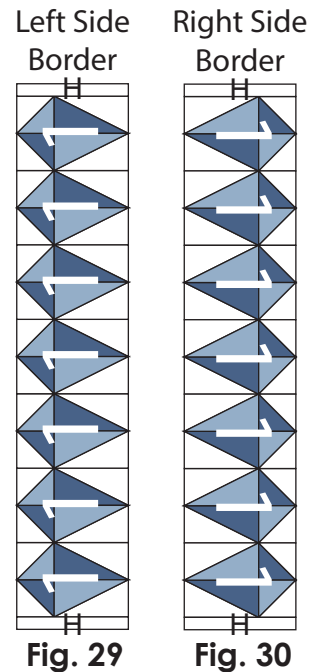
# Flora Bella

**19.** Sew together (7) **Block One** rectangles lengthwise. Sew (1) 1-1/2" x 9-1/2" Fabric **H** strip to the top and to the bottom of the newly sewn strip to make the **Left Side Border** (Fig. 29).

**20.** Repeat **Step 19** and refer to **Figure 30** for component identification, placement and orientation to make the **Right Side Border**.

**21.** Sew together (4) **Unit 1** rectangles lengthwise. Sew (1) 2" x 24-1/2" Fabric **D** strip to the bottom of the newly sewn strip lengthwise. Sew (1) 2" x 24-1/2" Fabric **C** strip to the bottom of the Fabric **D** strip. Sew (1) **Block Two** square to the left end of the newly sewn strip and (1) **Block Three** square to the right end to make the **Top Border** (Fig. 31).

**22.** Repeat **Step 21** and refer to **Figure 32** for component identification, placement and orientation to make the **Bottom Border**.



## Quilt Top Assembly:

*(Refer to the Quilt Layout when assembling the quilt top.)*

**23.** Sew (1) 2" x 44-1/2" Fabric **C** strip to each side of the **Center Block**.

**24.** Sew (1) 2" x 44-1/2" Fabric **D** strip to each side of the **Center Block**.

**25.** Sew the **Left Side Border** and the **Right Side Border** to the left and to the right sides of the **Center Block**.

**26.** Sew the **Top Border** and **Bottom Border** to the top and to the bottom of the **Center Block**.

**27.** Sew (1) 1-1/2" x 68-1/2" Fabric **D** strip to each side of the **Center Block**. Sew (1) 1-1/2" x 50-1/2" Fabric **D** strip to the top and to the bottom of the **Center Block**.

**28.** Sew (1) 1-1/2" x 70-1/2" Fabric **I** strip to each side of the **Center Block**. Sew (1) 1-1/2" x 52-1/2" Fabric **I** strip to the top and to the bottom of the **Center Block**.

**29.** Sew (1) 4-1/2" x 72-1/2" Fabric **J** strip to each side of the **Center Block**. Sew (1) 4-1/2" x 60-1/2" Fabric **J** strip to the top and to the bottom of the **Center Block** to make the quilt top.



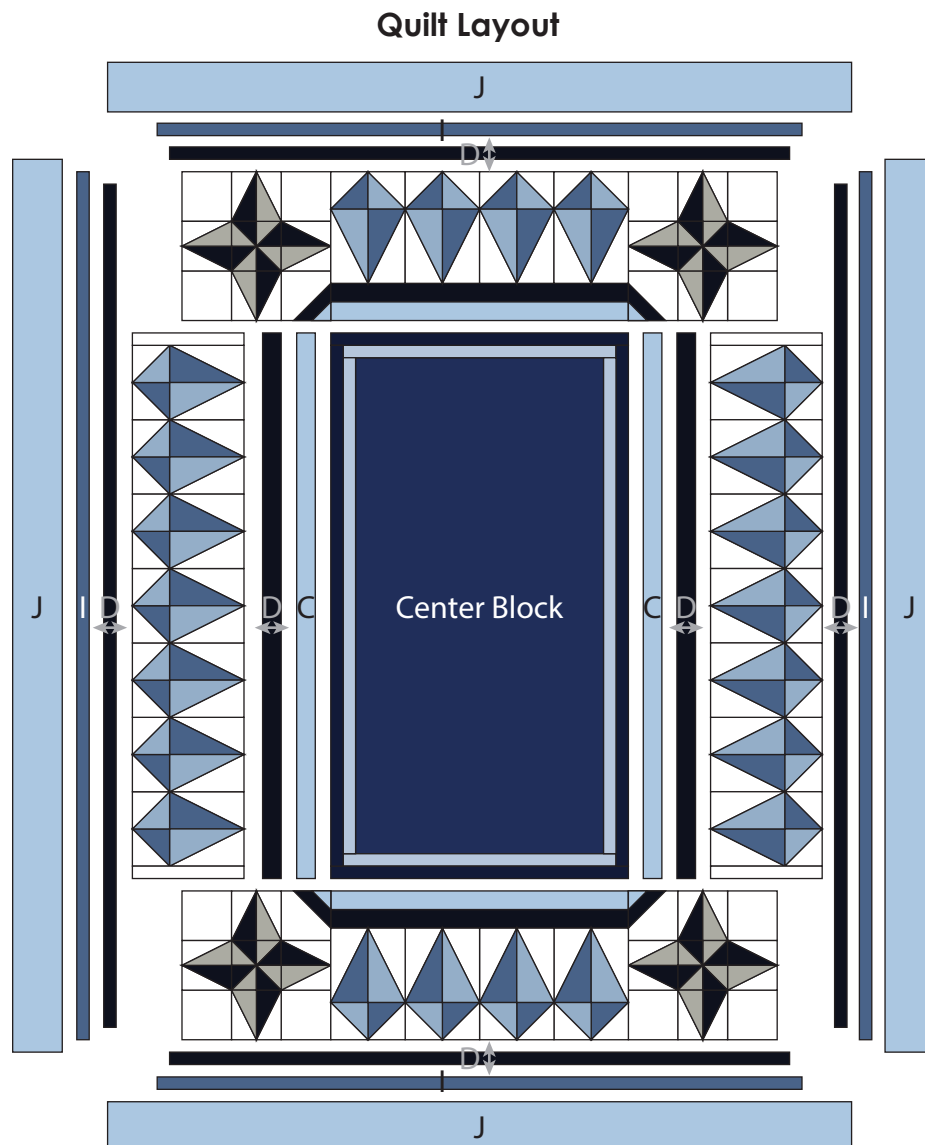
# Flora Bella

## FINISHING:

**30.** With the backing fabric laying taut, place batting and then quilt top to form quilt sandwich. Baste sandwich.

**31.** Quilt as desired.

**32.** Bind to finish quilt.





# Flora Bella

100% Templates

1" square  
for scale

**Note: Pay attention to the  
fabric print direction.**

