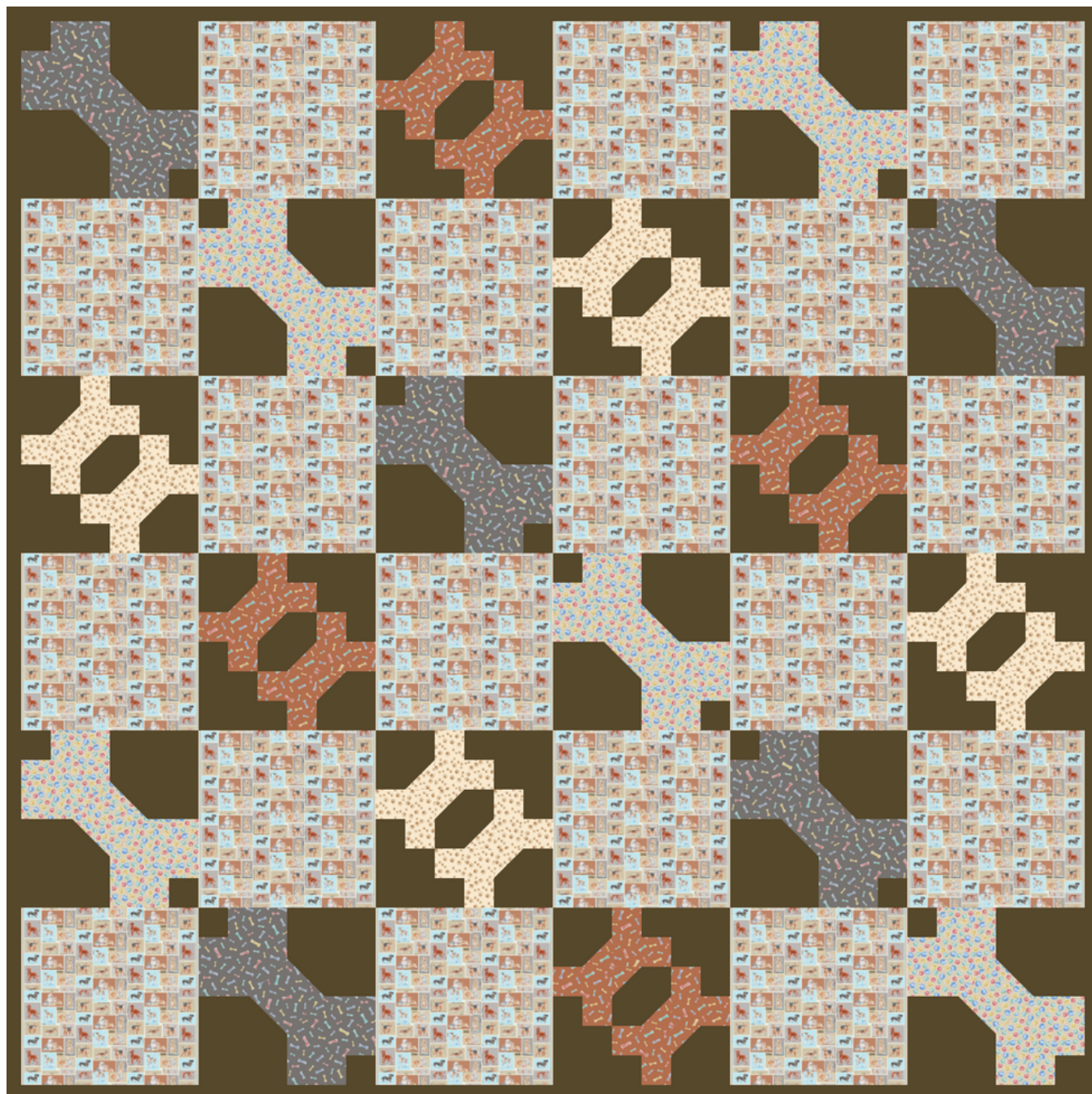


TREAT TO SLEEP

SIZE: 36" x 36" • LEVEL: CONFIDENT BEGINNER • PATTERN BY: SIOBHAN OF CDM365 STUDIOS
FABRIC COLLECTION: STAY PAWSITIVE



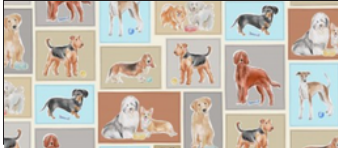
This is a digital representation of, the quilt. Top fabric may vary.

Please note: Before beginning your project, check for any pattern updates at MichaelMillerFabrics.com, free project section.

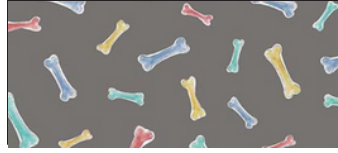
p.212.704.0774 | info@michaelmillerfabrics.com | www.michaelmillerfabrics.com



Treat to Sleep



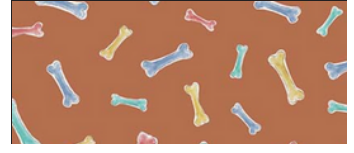
FABRIC A
DCX11200_MULTI
2/3 yard



FABRIC B
CX11202_GREY
1/4 yard



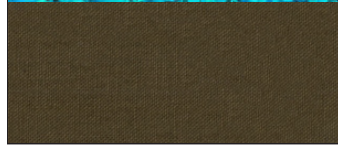
FABRIC C
CX11203_BEIGE
1/4 yard



FABRIC D
CX11202_RUST
1/4 yard



FABRIC E
CX11205_CREAM
1/4 yard



FABRIC F*
SC5333_TAUPE
1 yard

*includes binding

Treat to Sleep

KEY	CUTTING INSTRUCTIONS
A	(3) 6- 1/2" by WOF strips Subcut into (18) 6- 1/2" x 6- 1/2" squares [Piece A]
B	(1) 3- 1/2" by WOF strip Subcut into (10) 3- 1/2" x 2- 1/2" rectangles [Piece B] (1) 1- 1/2" by WOF strip Subcut into (10) 1- 1/2" x 2- 1/2" rectangles [Piece C] and (10) 1- 1/2" x 1- 1/2" squares [Piece D]
C	(1) 3- 1/2" by WOF strip Subcut into (10) 3- 1/2" x 2- 1/2" rectangles [Piece B] (1) 1- 1/2" by WOF strip Subcut into (10) 1- 1/2" x 2- 1/2" rectangles [Piece C] and (10) 1- 1/2" x 1- 1/2" squares [Piece D]
D	(3) 1- 1/2" by WOF strips Subcut into (16) 1- 1/2" x 2- 1/2" rectangles [Piece E] and (32) 1- 1/2" x 1- 1/2" squares [Piece F]
E	(3) 1- 1/2" by WOF strips Subcut into (16) 1- 1/2" x 2- 1/2" rectangles [Piece E] and (32) 1- 1/2" x 1- 1/2" squares [Piece F]
F	(2) 3- 1/2" by WOF strips Subcut into (20) 3- 1/2" x 3- 1/2" squares [Piece G] (3) 2- 1/2" by WOF strips Subcut into (40) 2- 1/2" x 2- 1/2" squares [Piece H] (2) 1-1/2" by WOF strips Subcut into (52) 1- 1/2" x 1- 1/2" squares [Piece I] (4) 2- 1/4" by WOF strips (for binding)

ADDITIONAL MATERIALS

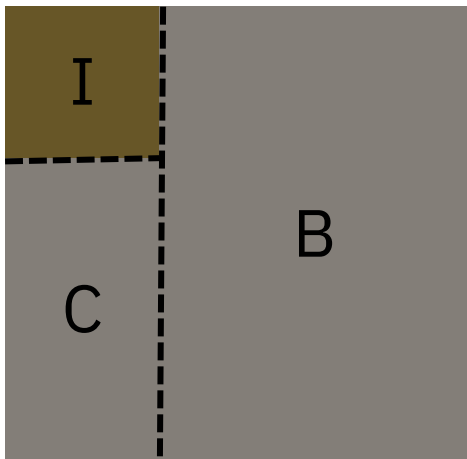
1 1/4 yards backing fabric
Thread to match fabrics
Sewing machine

42" x 42" batting
Basic sewing supplies

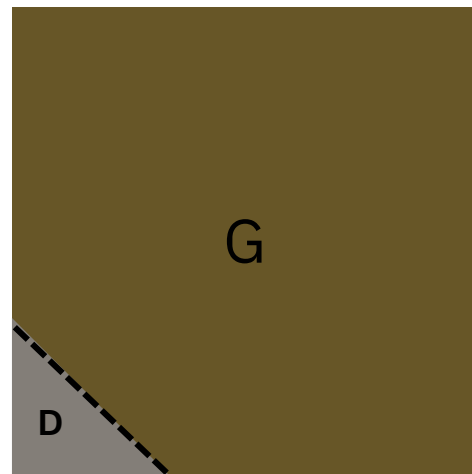
Treat to Sleep

SINGLE TREAT BLOCKS

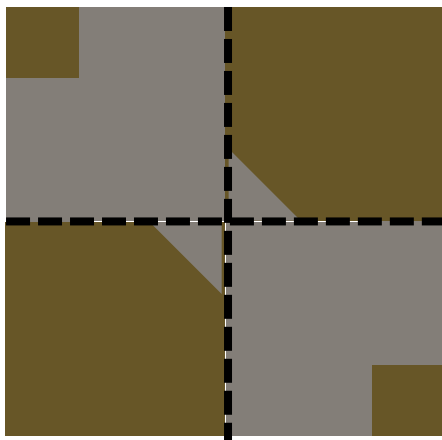
1. Using fabrics B and F make component parts of the block:
2. Component Part 1: Sew a Piece C to the bottom of a Piece I, then sew the CI Unit to the left of Piece B. See diagram below for details. Make 2.
3. Component Part 2: Draw a diagonal line across the back of Piece D. Place in the lower right corner of Piece G and stitch along the diagonal line. Trim a 1/4" seam allowance from the seam and press open. (This is a stitch and flip.) See diagram below for details. Make 2.
4. Assemble the Component parts as shown in the diagram making a total of 5 blocks.
5. Repeat steps 2 through 4 using fabrics C and F to make the other set of Single Treat Blocks. Once complete you will have a total of 10 Single Treat blocks, 5 in Fabric B, and 5 in Fabric C.



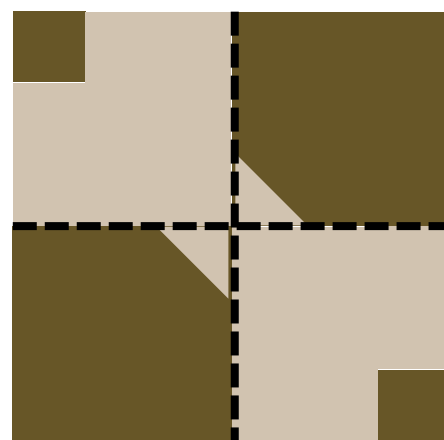
Unit 1, Make 2



Unit 2, Make 2



Block in Fabric B, Make 5

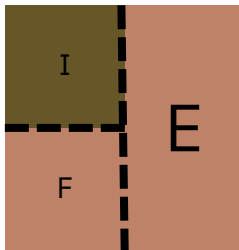


Block in Fabric C, Make 5

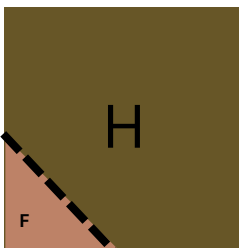
Treat to Sleep

DOUBLE TREATS BLOCKS

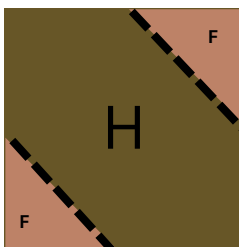
1. Using fabrics D and F make component parts of the block:
2. Component Part 1: Sew a Piece F to the bottom of a Piece I, then sew the FI Unit to the left of Piece E. See diagram below for details. Make 4.
3. Component Part 2: Draw a diagonal line across the back of Piece F. Place in the lower right corner of Piece H and stitch along the diagonal line. Trim a 1/4" seam allowance from the seam and press open. (This is a stitch and flip.) See diagram below for details. Make 2.
4. Component Part 3: Draw a diagonal line across the back of 2 Piece Fs. Place one in the lower right corner of Piece H and one in the upper right corner so that they are opposite each other. Stitch along the diagonal line. Trim a 1/4" seam allowance from each seam and press open. (These are both stitch and flips.) See diagram below for details. Make 1.
5. Assemble the Component parts as shown in the diagram, making a total of 4 blocks.
6. Repeat steps 2 through 4 using fabrics E and F to make the other set of Double Treats Blocks. Once complete, you will have a total of 8 Double Treats blocks, 4 in Fabric D, and 4 in Fabric F.



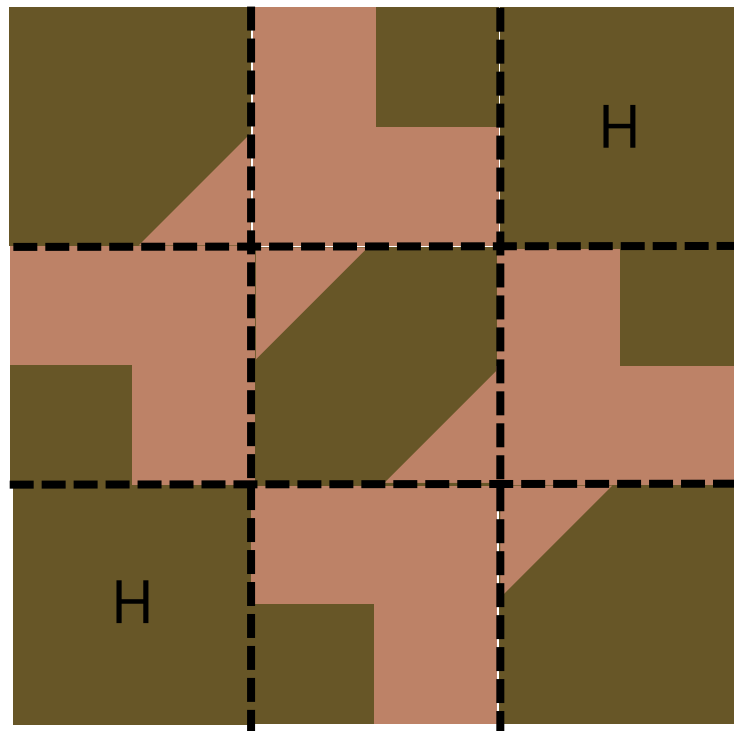
Unit 1, Make 4



Unit 2, Make 2



Unit 3, Make 1



Double Treats Block: Make 4 each in Fabric D & E



Treat to Sleep

ASSEMBLE QUILT TOP

To assemble the quilt top you will use the Single Treat and Double Treat quilt Blocks along with your A pieces. Follow the diagram below for assembly instructions. Note that the letter corresponds to the patterned fabric used in the block, so for example a "B" is a Single Treat block made with fabric B.

B	A	D	A	C	A
A	C	A	E	A	B
E	A	B	A	D	A
A	D	A	C	A	E
C	A	E	A	B	A
A	B	A	D	A	C

FINISHING THE QUILT

Layer backing right side down, batting and quilt top right side up to form a quilt sandwich. Baste as desired. Quilt your quilt sandwich. A tight quilting pattern such as matchstick is recommended for pet quilts since it provides greater texture and comfort. Bind edges using the binding strips from Fabric F.

Additional Note: To turn this into an even cozier quilt for your pet you can add extra layers of batting to give it greater texture and strength. You can also turn it into a large pet bed. In that case you can skip the binding, and instead cut an additional yard of fabric the same size as the finished quilt. With the right side of the fabric facing the top of the quilt sew almost all the way around, leaving a hole large enough for turning. Turn and stuff the bed (this is a great time to use up left over batting pieces) until it is about 2" thick. Hand stitch the opening closed.