

michael miller FABRICS

Gran's Best

SIZE: 93"W x 93"H • LEVEL: ADVANCED • PATTERN BY: CHRISTINE STAINBROOK of Project House 360



THIS IS A DIGITAL REPRESENTATION OF THE QUILT TOP, FABRIC MAY VARY.

PLEASE NOTE: BEFORE BEGINNING YOUR PROJECT, CHECK FOR ANY PATTERN UPDATES AT MICHAELMILLERFABRICS.COM'S FREE PROJECTS SECTION.

p.212.704.0774 | info@michaelmillerfabrics.com | www.michaelmillerfabrics.com



Gran's Best

1/4" Seam Allowance Check

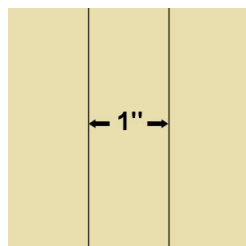
To check if your seam is accurate, cut three 1 1/2" x 3" pieces from scrap fabric.

Sew the pieces together along the 3" side, using what you believe is a 1/4" seam.

Press away from the center piece.

Measure.

The center piece should be exactly 1" wide.



If, when you measure, the center is less than 1", your seam allowance is too large. You need to move the needle to the right.

If it's more than 1", your seam allowance is too small and you need to move the needle to the left.

Consult your machine's owner's manual for instructions on moving your needle position.

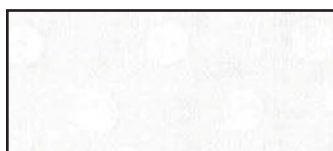
Repeat this check until your center strip measures correctly.



FABRIC A
CX11195 cream
3 1/2 yards



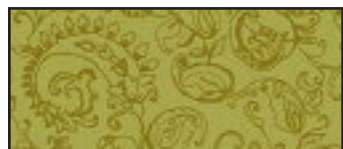
FABRIC B
CX11193 stripe
3 yards



FABRIC C
CX2490 snowdrop
3 yards



FABRIC D
CX11196 olive
1 yard



FABRIC E
CX11194 olive
1 yard



FABRIC F
CX11194 gold
3/4 yard



FABRIC G
CX11195 wine
1 3/4 yards



FABRIC H
CX11195 yellow
3/8 yard



FABRIC I
CX11196 pistachio
1/2 yard



FABRIC J
CX11194 rose
1/2 yard



FABRIC K
CX11194 pink
3/8 yard



FABRIC L
CX11197 rose
7/8 yard



FABRIC M
DCX11192 bouquet
2 1/2 yards



BACKING
DCX11192 bouquet
8 1/2 yards

BATTING
101" x 101"



Gran's Best

KEY	CUTTING INSTRUCTIONS	WOF=width of fabric
A	(2) 27" x WOF. Subcut: (4) template A; (20) template B; (4) template D; (4) template K (8) template I (8) template I reversed (1) template L	
B	(4) 3 ⁵ / ₈ " x WOF. (4) template J (4) template J reversed (8) template H (8) template H reversed (10) 2 ¹ / ₂ " x WOF for binding.	
C	(1) 14 ³ / ₄ " square (4) 9 ⁷ / ₈ " squares (32) 2 ⁵ / ₈ " squares (12) 4" x WOF. Subcut: (120) 4" squares (24) 2 ¹ / ₂ " x 4" (96) 3 ¹ / ₂ " squares (8) template N	
D	(2) 11 ¹ / ₂ " x WOF. Subcut: (24) 3 ¹ / ₄ " x 11 ¹ / ₂ " rectangles	
E	(2) 2 ⁵ / ₈ " x WOF. Subcut: (24) 2 ⁵ / ₈ " squares (2) 11 ¹ / ₂ " x WOF. Subcut: (24) 3 ¹ / ₄ " x 11 ¹ / ₂ " rectangles (2) 4 ¹ / ₂ " x WOF. Subcut: (10) 4 ¹ / ₂ " squares	
F	(2) 4 ¹ / ₂ " x WOF. Subcut: (10) 4 ¹ / ₂ " squares; (8) 2 ¹ / ₄ " squares (8) template E (4) template C	
G	(8) 2" x WOF. Subcut: (24) 2" x 11 ¹ / ₂ " rectangles (600") ³ / ₄ " bias tape	
H	(2) 4 ¹ / ₂ " x WOF. Subcut: (10) 4 ¹ / ₂ " squares	
I	(2) 4 ¹ / ₂ " x WOF. Subcut: (10) 4 ¹ / ₂ " squares (4) template F (4) template F reversed	
J	(2) 4 ¹ / ₂ " x WOF. Subcut: (10) 4 ¹ / ₂ " squares; (8) template O	
K	(2) 4 ¹ / ₂ " x WOF. Subcut: (10) 4 ¹ / ₂ " squares	

Gran's Best

L	(8) 2" x WOF. (8) template N
M	(10) 6½" x WOF. (4) template G (4) template G reversed

Center Block:

Make 1

1. Stitch one fabric J template M to each corner of one fabric A template L. Press triangles outward. Square to 4⁵/₈".



2. Stitch one fabric J template M to one fabric I template F. Press template M outward.
3. Stitch one fabric C template N to one fabric I template F. Press template N outward. Join together to complete the unit. Make four units.



4. Stitch four fabric L template N in pairs with four fabric C template N. Square units to 3½".
5. Stitch one HST unit to each end of two units from step 3.
6. Combine the units as shown. Square block to 10½".



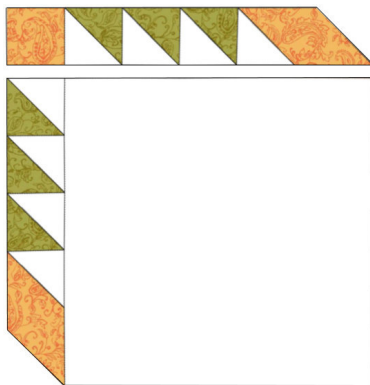
Gran's Best

7. Use 24 fabric C and 24 fabric E $2\frac{5}{8}$ " squares to make 48 HSTs. Square units to $2\frac{1}{4}$ ".
8. Stitch the HSTs together in sets of three, making half of them reversed. Make eight of each set.

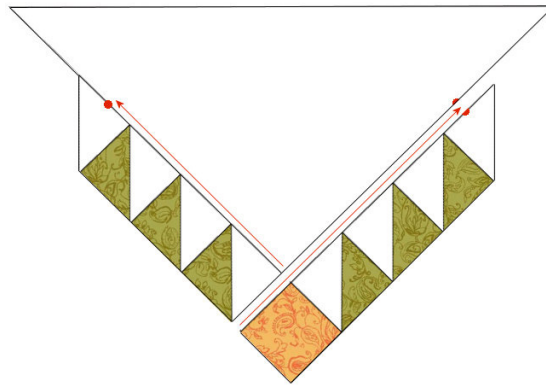


9. Cut eight fabric C $2\frac{5}{8}$ " squares once diagonally. Combine one of each HST set, one fabric F $2\frac{1}{4}$ " square, two fabric F template E, two fabric C $2\frac{5}{8}$ " triangles and one fabric C $9\frac{7}{8}$ " square as shown. Make four units.
10. Cut one fabric C $14\frac{3}{4}$ " square twice diagonally.
11. Combine one triangle from step 10 with one of each of the HST sets, two fabric C $2\frac{5}{8}$ " triangles and one fabric F $2\frac{1}{4}$ " square. Use partial seams, stitching in the direction of the red arrow and stopping at the red dot. Make four units.

Step 9



Step 11



12. Combine all the units as shown along with the fabric L template N pieces and eight fabric M template G pieces, completing partial seams as you go. Square to $32\frac{1}{2}$ ".



Gran's Best

13. Stitch four fabric B $3\frac{5}{8}$ " x WOF strip to the center block, mitering corners. Square to $38\frac{3}{4}$ ".

Block A:

Make 4

14. Use foundation paper piecing to create 24 center foundations as follows:

A1: fabric G 2 " x $11\frac{1}{2}$ " rectangle

A2: fabric D $3\frac{1}{4}$ " x $11\frac{1}{2}$ " rectangle

A3: fabric E $3\frac{1}{4}$ " x $11\frac{1}{2}$ " rectangle.

Trim on cutting lines, but do not remove paper yet.

15. Using inset seams, stitch six foundation units together with five fabric A template B, one fabric A template D and one fabric A template D reversed. Remove paper.

Step 14

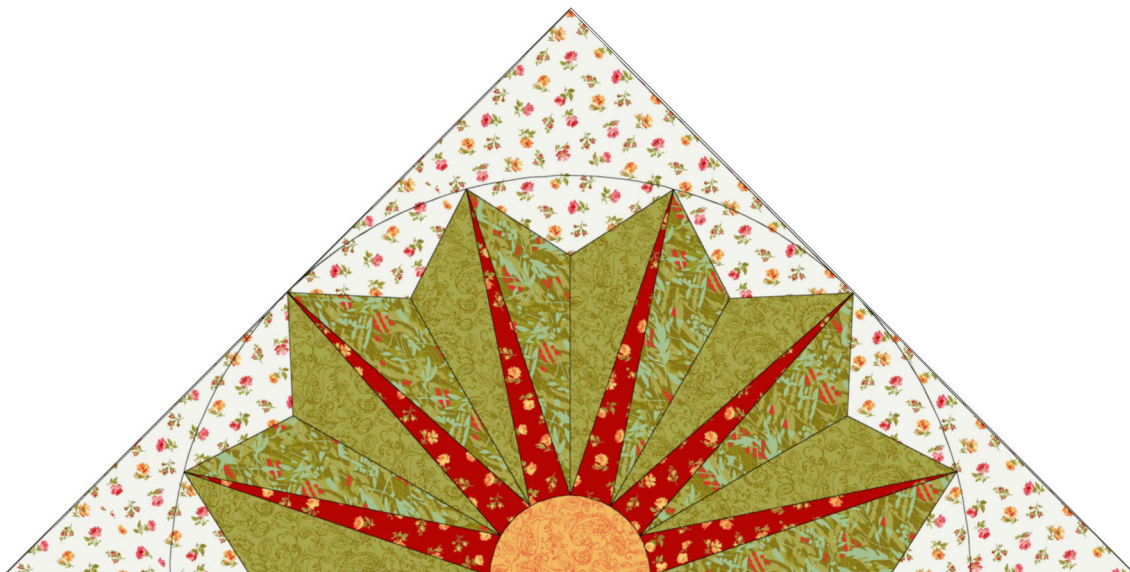


Step 15



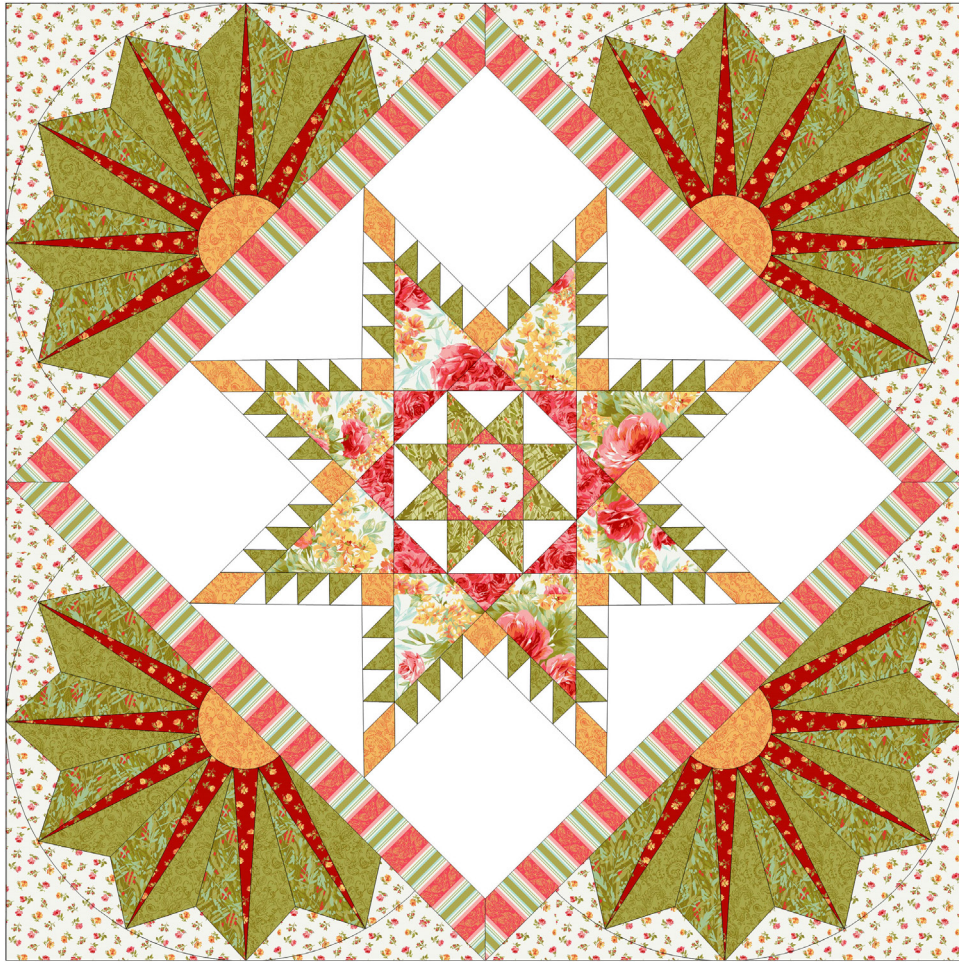
16. Use curved piecing to add one fabric F template C to each unit.

17. Stitch one template A fabric A to the block using curved piecing. Make four blocks. You will notice that template A is larger on the outside edge to make it easier to piece. We'll trim it in a minute.



Gran's Best

18. Add block A to the quilt center. Square to 52½".



Block B:

Make 4

19. Cut 2 each of fabrics E, F, H, I, J and K 4½" squares once diagonally. Cut twelve fabric C 4" squares once diagonally.

20. Use foundation paper piecing to make corner foundation A as follows:

A1: fabric I 4½" triangle

A2: fabric C 4" triangle

A3: fabric C 2½" x 4" rectangle

A4: fabric J 4½" triangle

A5: fabric C 4" triangle

A6: fabric C 2½" x 4" rectangle

A7: fabric K 4½" triangle

A8: fabric C 4" triangle

A9: fabric C 2½" x 4" rectangle

21. Use foundation paper piecing to make corner foundation B as follows:

B1: fabric F 4½" triangle

B2: fabric C 4" triangle

B3: fabric C 2½" x 4" rectangle

B4: fabric H 4½" triangle

B5: fabric C 4" triangle

B6: fabric C 2½" x 4" rectangle

B7: fabric E 4½" triangle

B8: fabric C 4" triangle

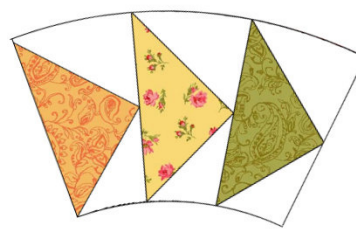
B9: fabric C 2½" x 4" rectangle

Gran's Best

Step 20



Step 21



22. Stitch the foundation pieced sections together as shown and remove paper.

23. Stitch one fabric B template J and one fabric B template J reversed together as shown.

24. Use curved piecing to add the template J unit to the foundation unit. Complete the block by adding one fabric A template K using curved piecing. Square block to 13½". Make four corner blocks.

At this point you have a choice. You can add the fabric G ¾" bias tape to the blocks individually or you can wait until the blocks are all added to the quilt and stitch it on then. If you are doing it block-by-block, topstitch the bias tape in place as shown. If you want to wait and do it in one long piece, we'll do it later. Block below is shown with bias tape in place.

Steps 22-24



Block C:

Make 8

25. Cut 4 each of fabrics E, F, H, I, J and K 4½" squares once diagonally. Cut 24 fabric C 4" squares once diagonally. Cut 24 fabric C 3½" squares once diagonally.

26. Use foundation paper piecing to piece the foundations for Geese Block #2 as follows:

Foundation A:

- A1: fabric F 4½" triangle
- A2: fabric C 4" triangle
- A3: fabric C 3½" triangle
- A4: fabric H 4½" triangle
- A5: fabric C 4" triangle
- A6: fabric C 3½" triangle
- A7: fabric E 4½" triangle
- A8: fabric C 4" triangle
- A9: fabric C 3½" triangle

Gran's Best

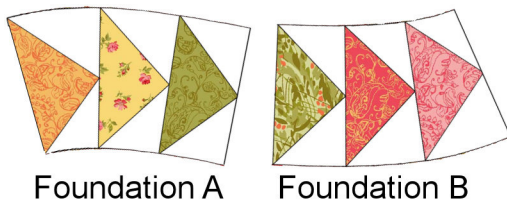
Foundation B:

- B1: fabric I 4½" triangle
- B2: fabric C 3½" triangle
- B3: fabric C 4" triangle
- B4: fabric J 4½" triangle
- B5: fabric C 3½" triangle
- B6: fabric C 4" triangle
- B7: fabric K 4½" triangle
- B8: fabric C 3½" triangle
- B9: fabric C 4" triangle

27. Stitch the foundations together as shown and remove paper.

28. Stitch one fabric B template H and one fabric A template I piece to the geese strip as shown. Add the fabric G ¾" bias tape as for corner block if you're adding it as you go. Square block to 13½". Make eight blocks.

Step 26



Step 27



Block D:

Make 8

29. Cut 4 each of fabrics E, F, H, I, J and K 4½" squares once diagonally. Cut 24 fabric C 4" squares once diagonally. Cut 24 fabric C 3½" squares once diagonally.

30. Use foundation paper piecing to piece the foundations for Geese Block #1 as follows:

Foundation A:

- A1: fabric F 4½" triangle
- A2: fabric C 4" triangle
- A3: fabric C 3½" triangle
- A4: fabric H 4½" triangle
- A5: fabric C 4" triangle
- A6: fabric C 3½" triangle
- A7: fabric E 4½" triangle
- A8: fabric C 4" triangle
- A9: fabric C 3½" triangle

Gran's Best

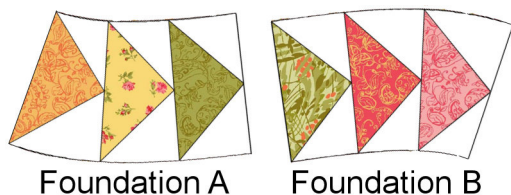
Foundation B:

- B1: fabric I 4½" triangle
- B2: fabric C 3½" triangle
- B3: fabric C 4" triangle
- B4: fabric J 4½" triangle
- B5: fabric C 3½" triangle
- B6: fabric C 4" triangle
- B7: fabric K 4½" triangle
- B8: fabric C 3½" triangle
- B9: fabric C 4" triangle

31. Stitch the foundations together as shown and remove paper.

32. Stitch one fabric B template H and one fabric A template I piece to the geese strip as shown. Add the fabric G ¾" bias tape as for corner block if you're adding it as you go. Square block to 13½". Make eight blocks.

Step 30



Step 32



Assembly:

33. Add blocks B, C and D to the quilt center as shown in the assembly diagram on page 11, alternating blocks as shown.

34. If you didn't add the fabric G ¾" bias tape as you go, add it now, topstitching it to the quilt top. When you reach the end, turn under a ¼" seam allowance on the raw edge and hand stitch closed.

Borders:

35. Stitch eight fabric L 2" x WOF strips together in pairs to make four pieced strips. Cut two strips to 2" x 78½" and add to the sides of the quilt. Cut two strips to 2" x 81½" and add to the top and bottom of the quilt.

36. Cut two fabric M 6½" x WOF strips in half. Stitch a whole strip to each end of each piece making four 2½ strip lengths. Add to the quilt mitering corners.

whole strip	half strip	whole strip
-------------	------------	-------------

Gran's Best

Assembly Diagram



Finishing:

37. Layer, baste and quilt as desired.
38. Bind with ten fabric B $2\frac{1}{2}$ " x WOF strips.

square
measures
1"

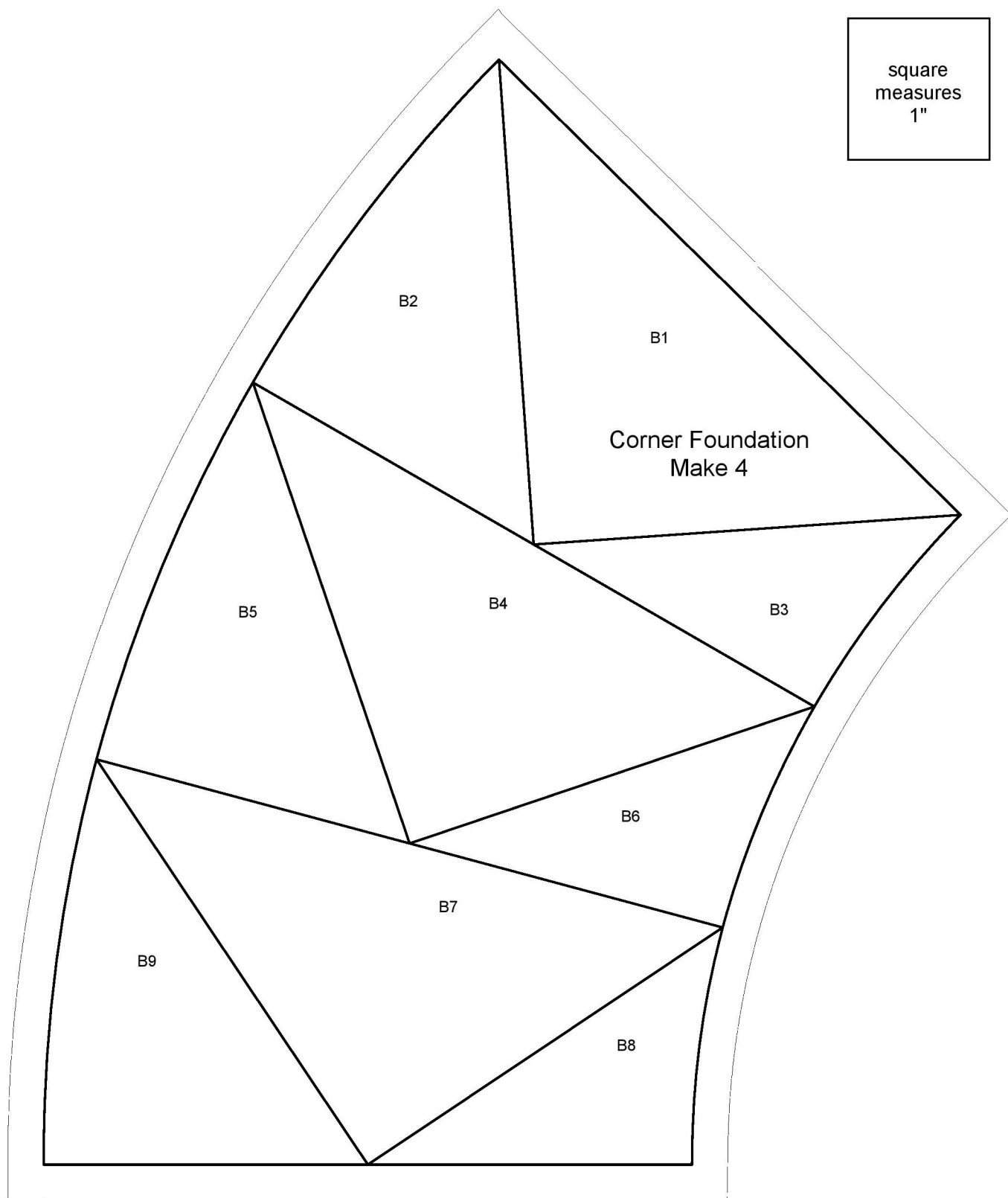
Center Foundation
Make 24

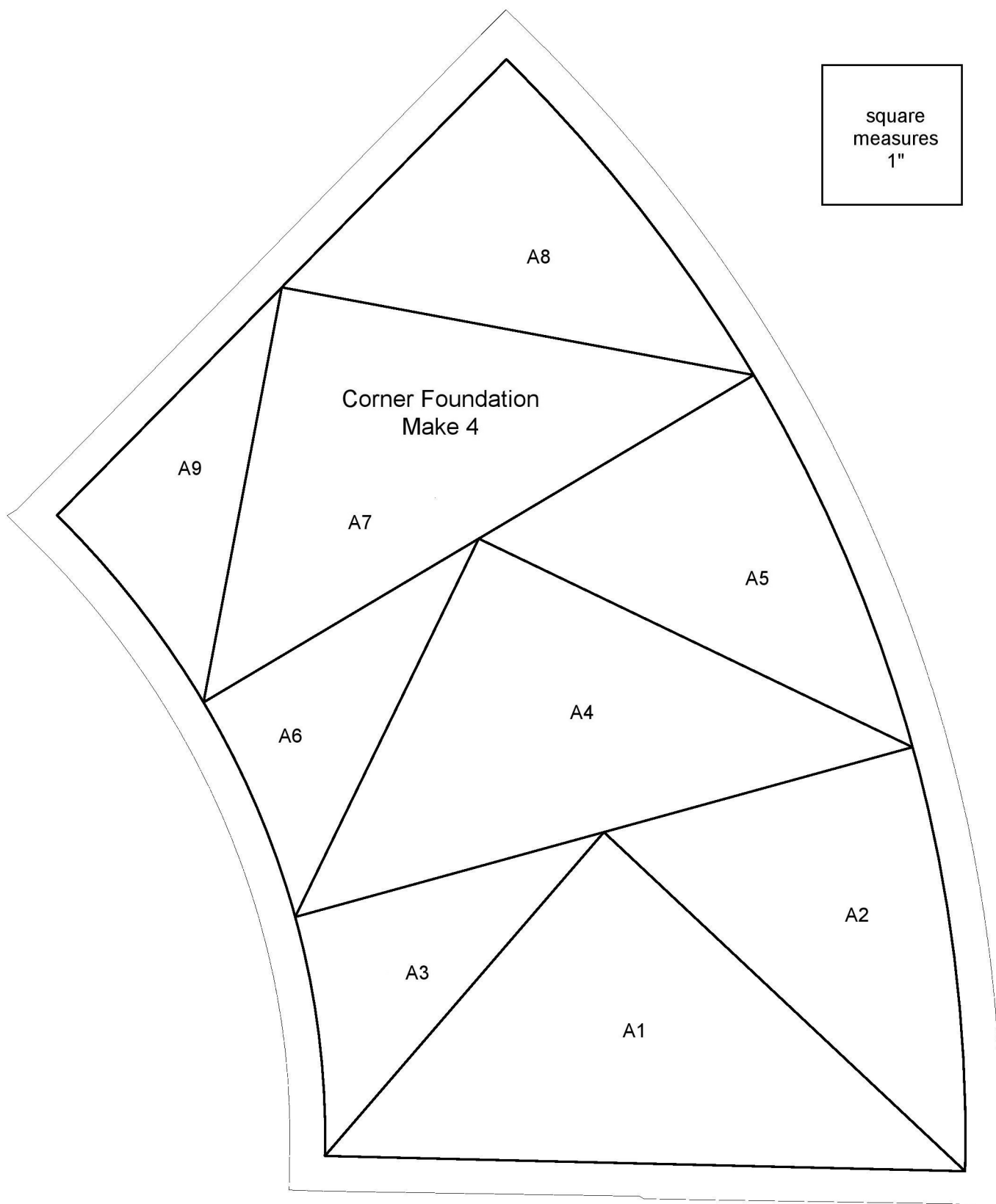
A_2

A_3

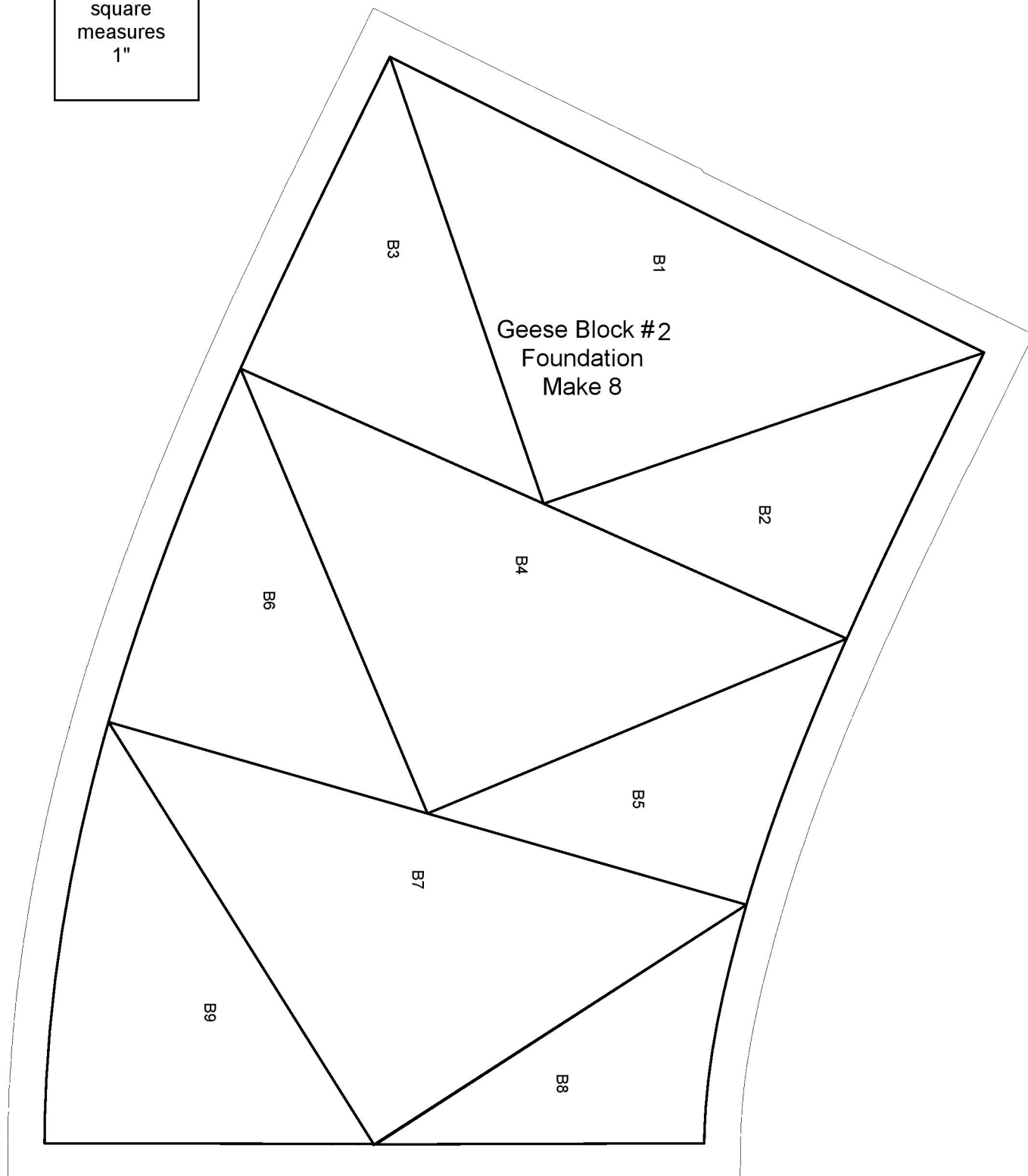
A_1

square
measures
1"





square
measures
1"



square
measures
1"

Geese Block #2
Foundation
Make 8

A1

A2

A4

A5

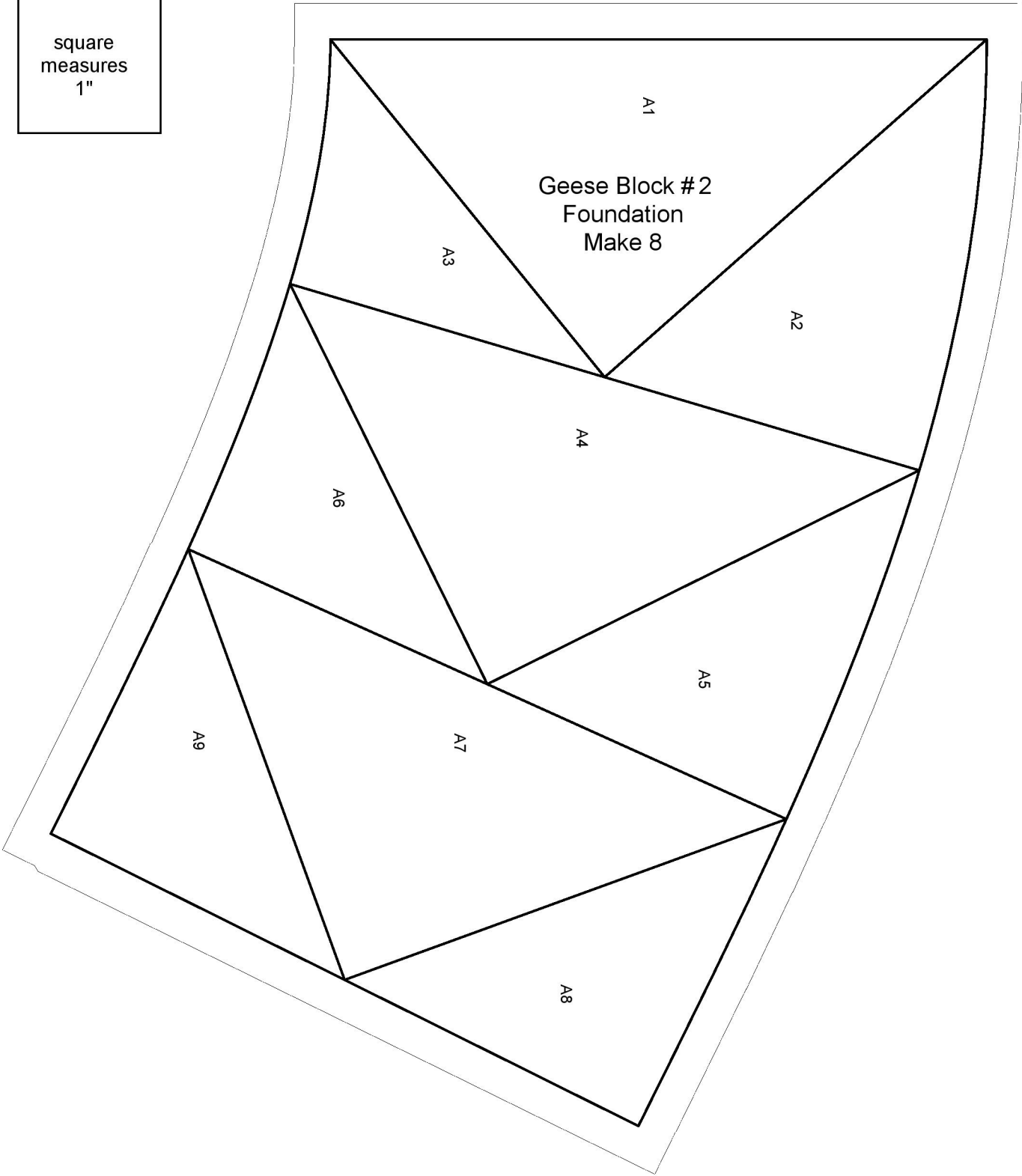
A8

A3

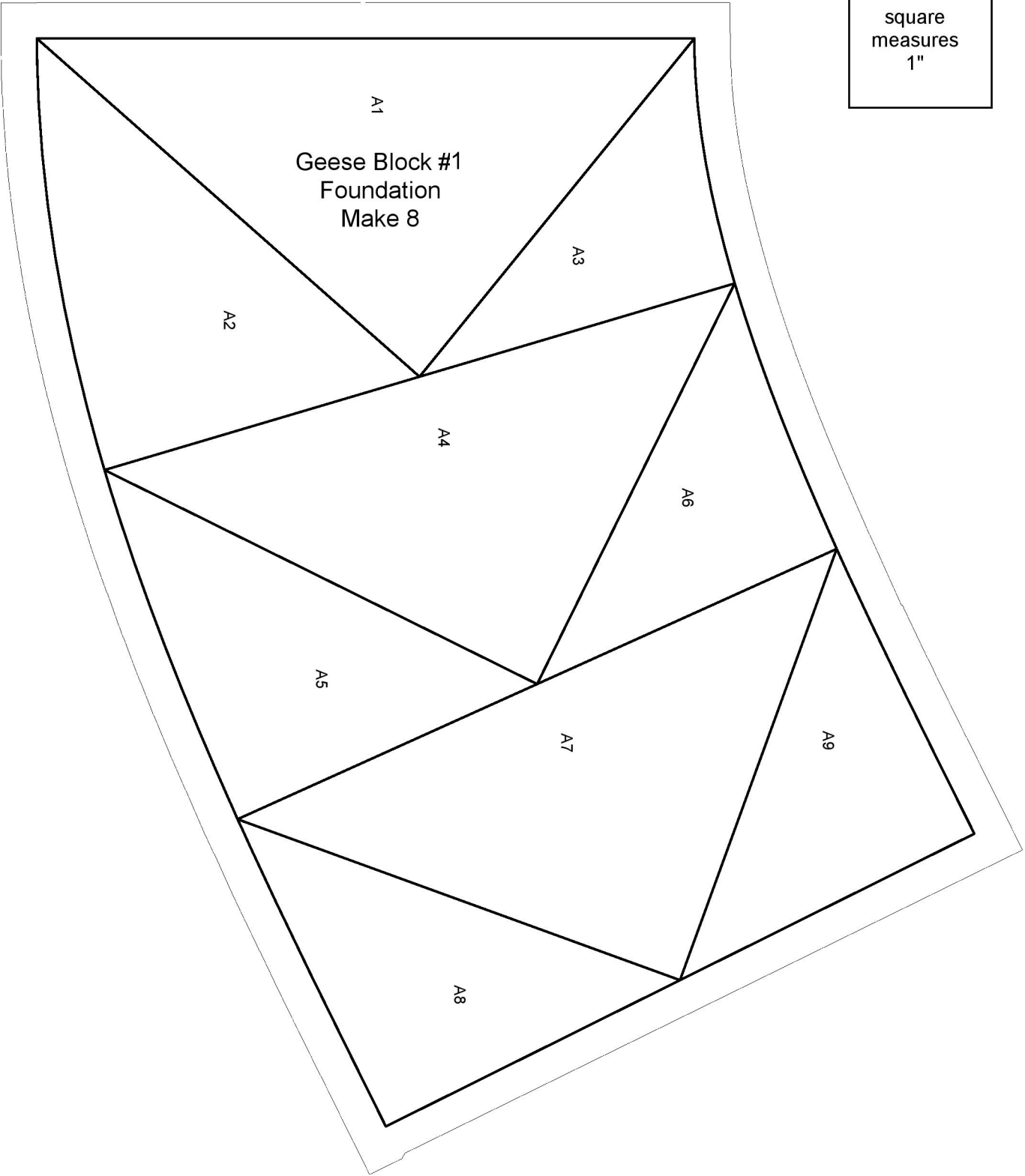
A6

A7

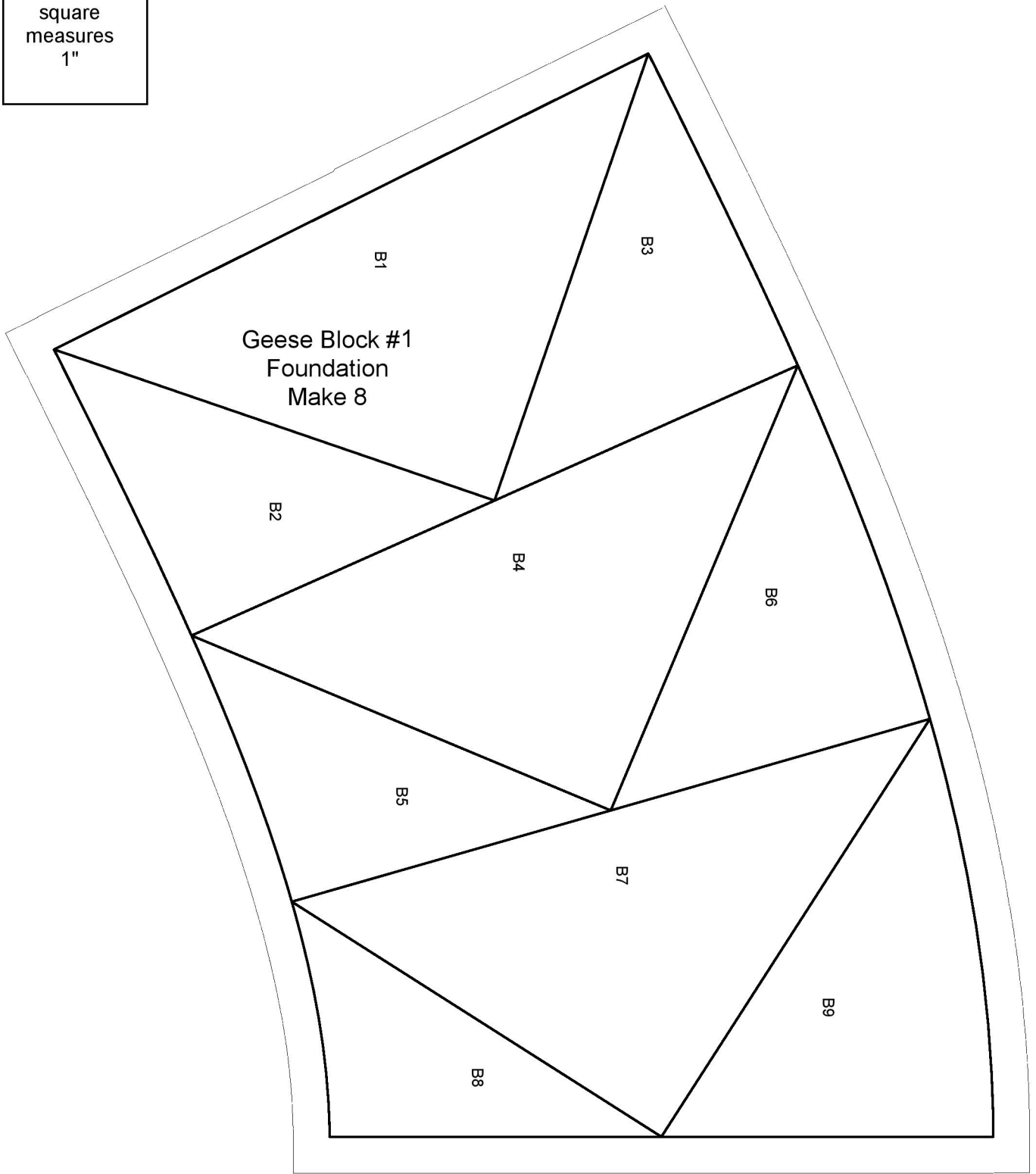
A9



square
measures
1"



square
measures
1"



grain of fabric

JOIN #1

Template A

square
measures
1"

JOIN #3

grain of fabric

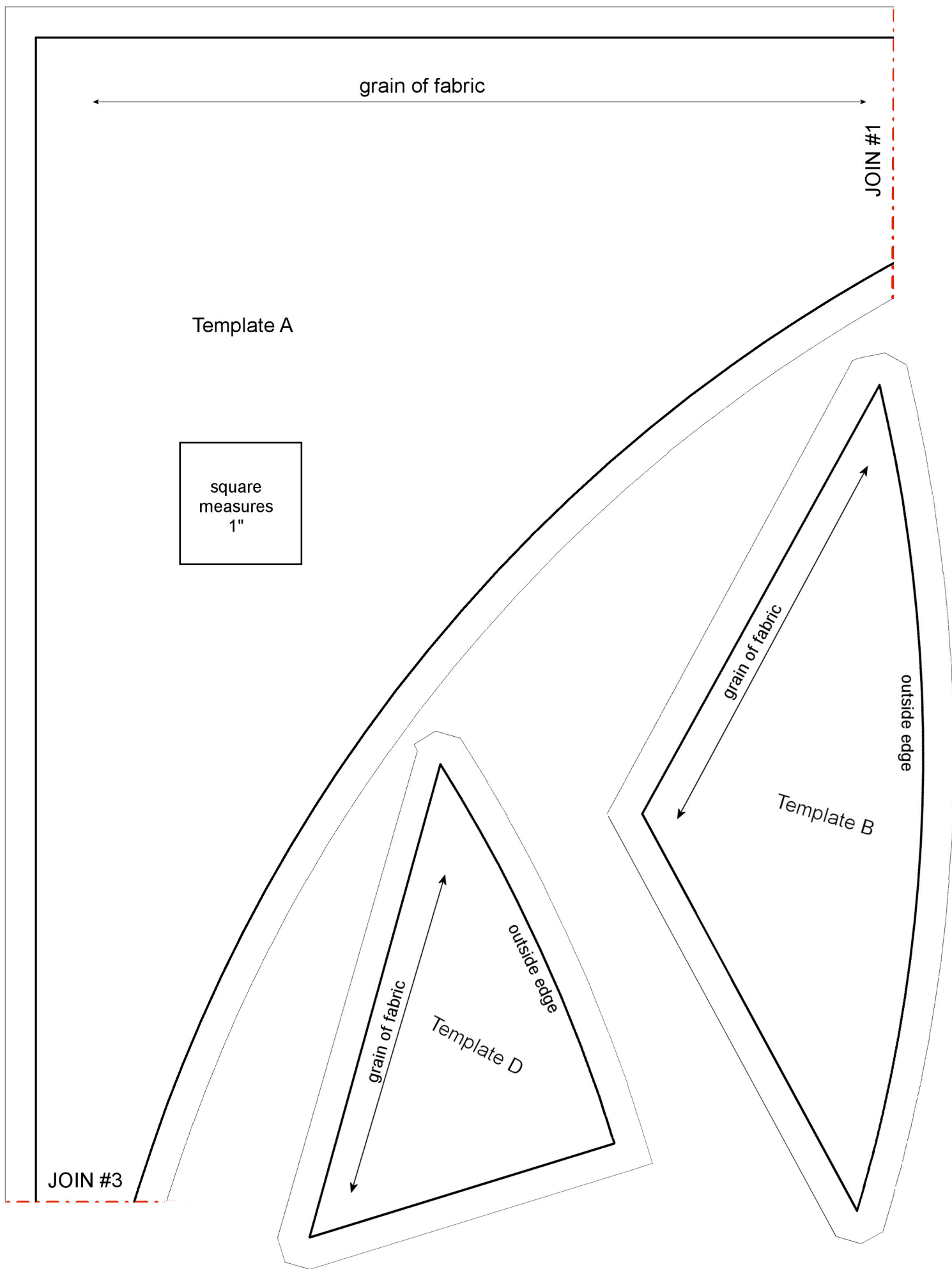
outside edge

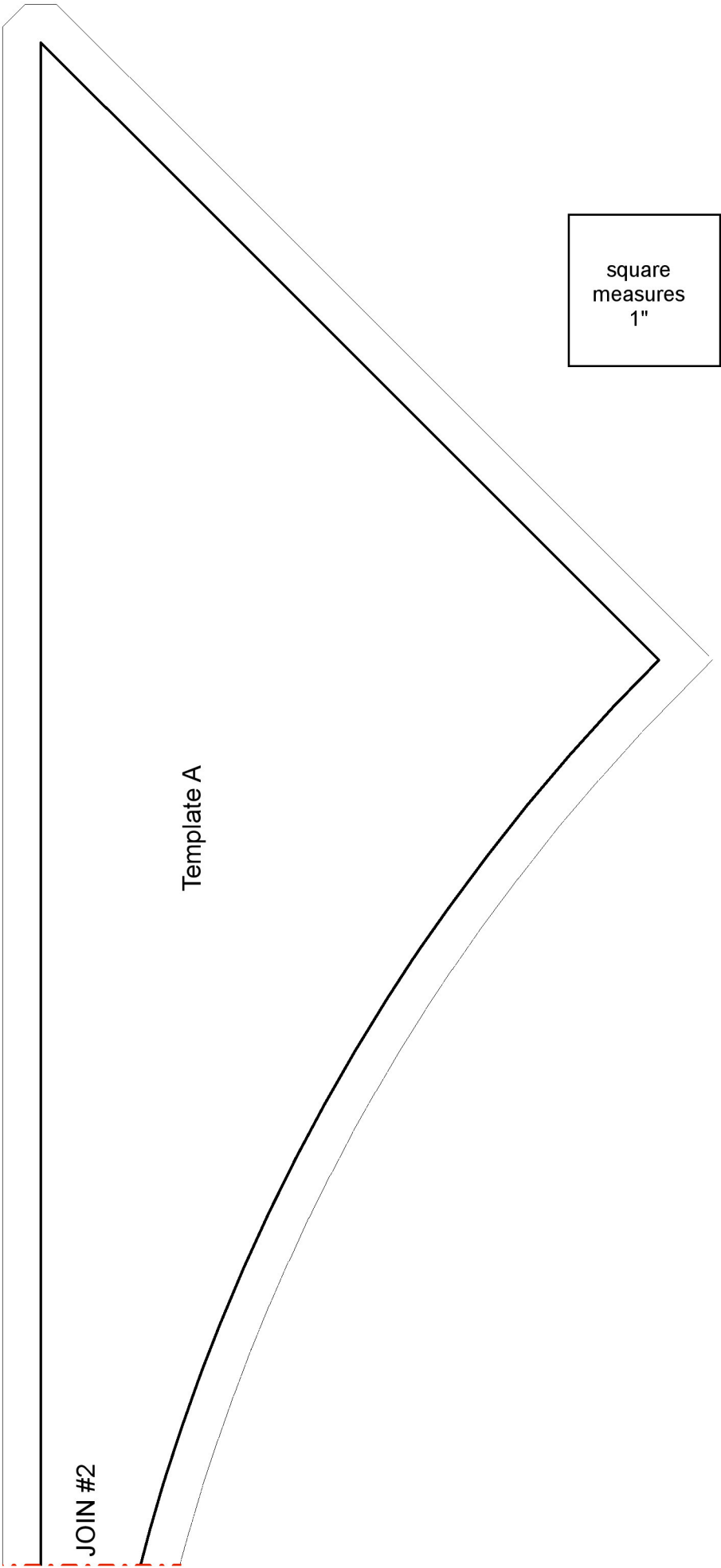
Template B

grain of fabric

outside edge

Template D





JOIN #4

Template A

square
measures
1"

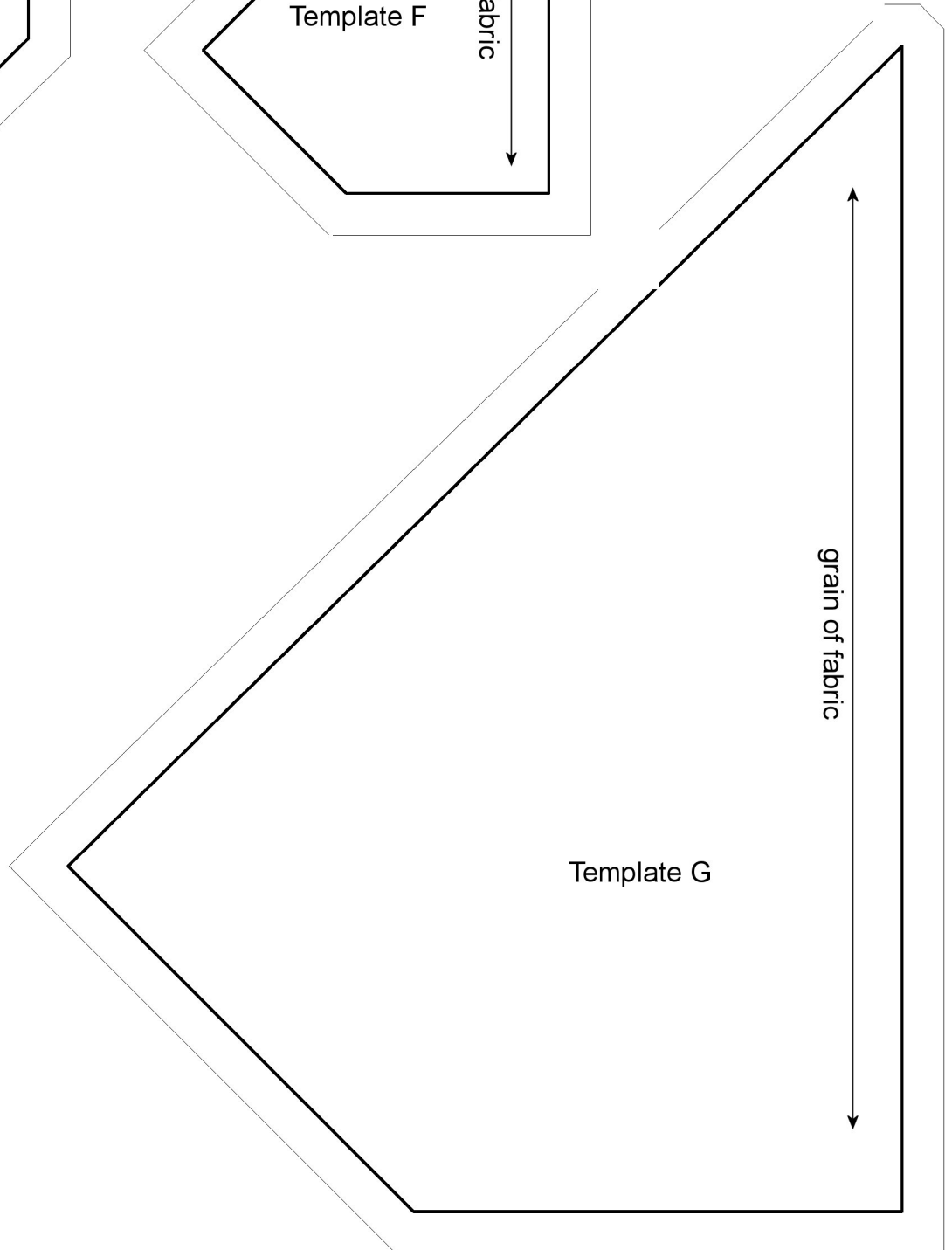
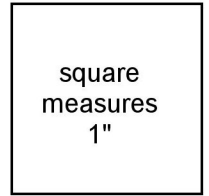
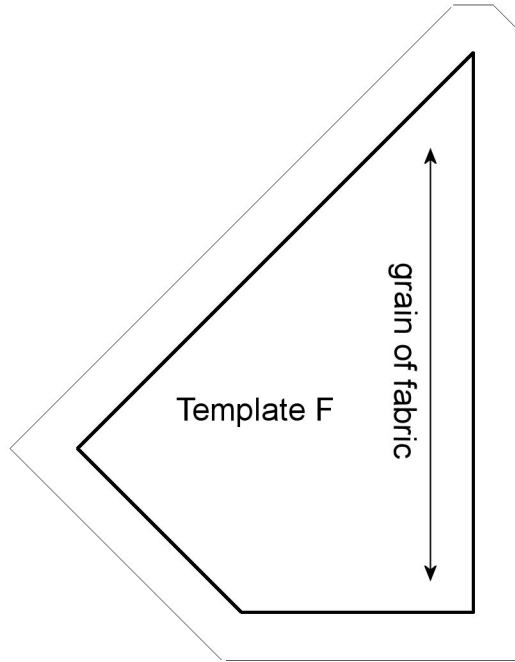
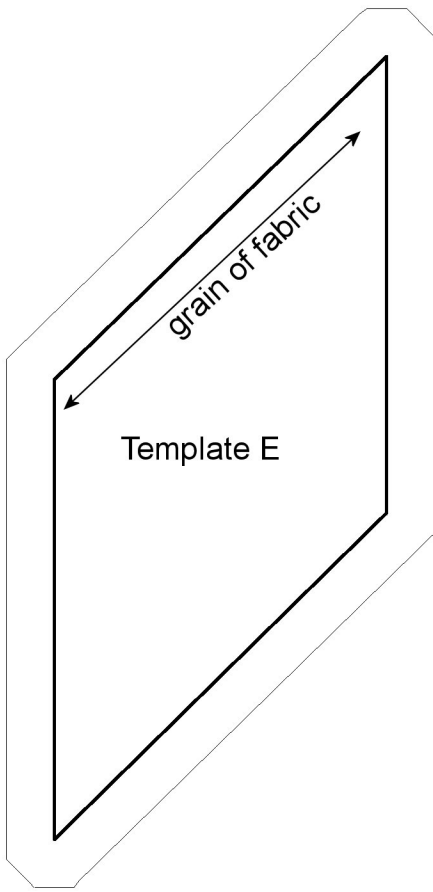
Template C

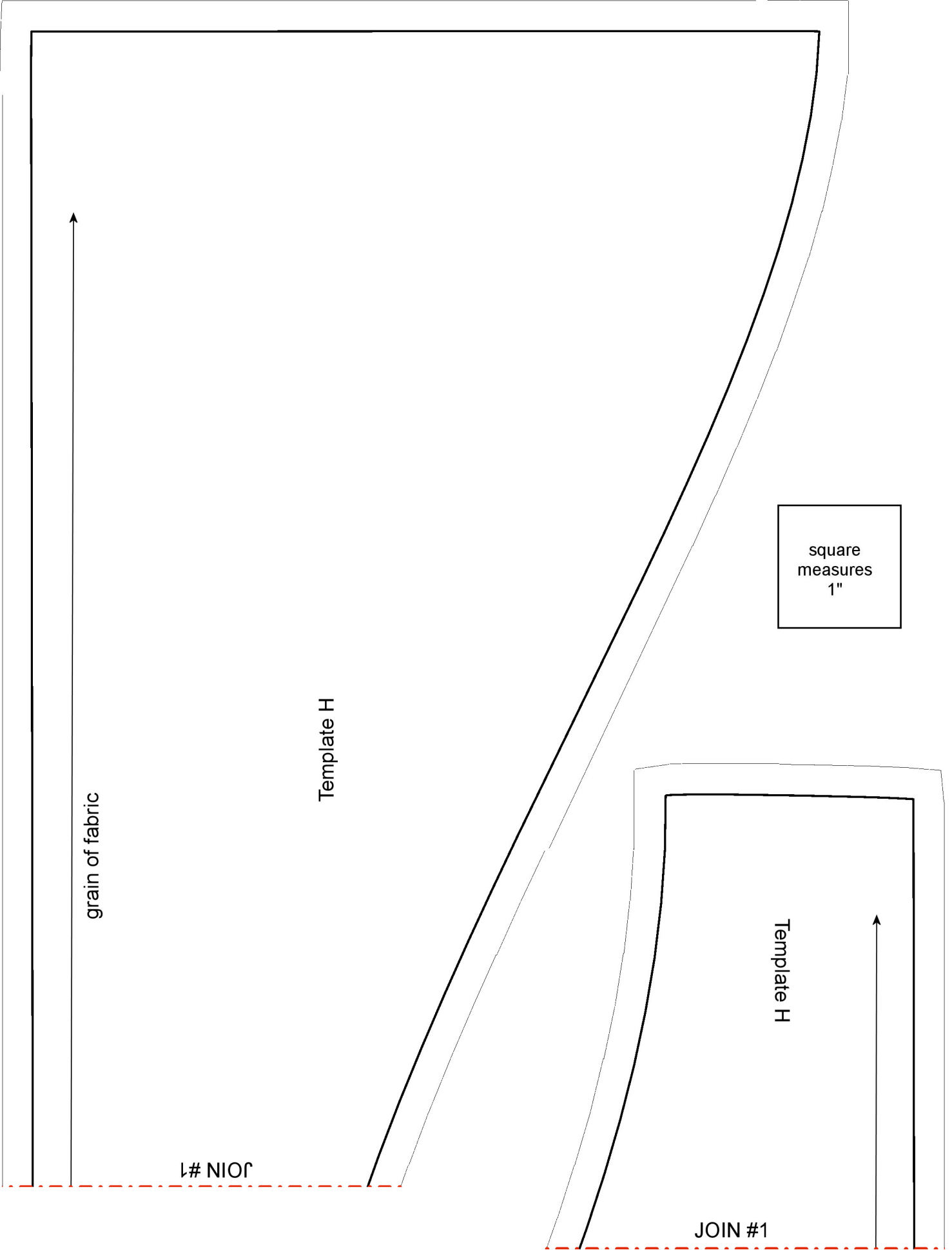
grain of fabric

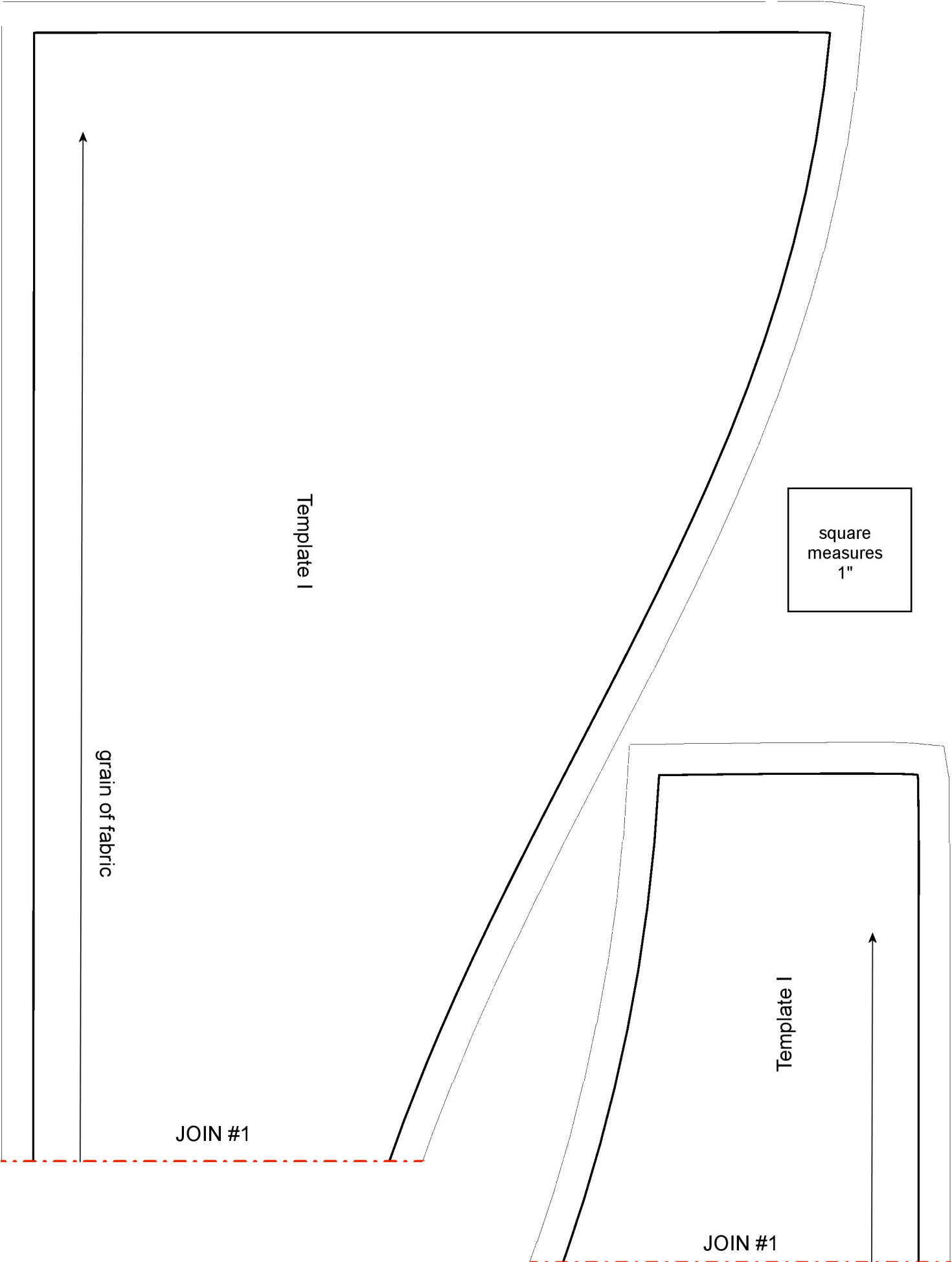
JOIN #4

Template A

JOIN #3







square
measures
1"

