

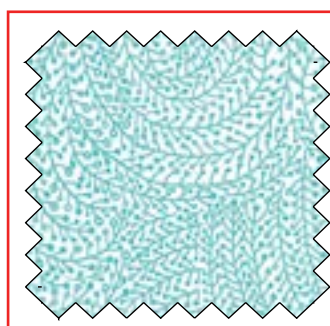
# WASHI TAPE QUILT

SIZE: 60"W X 71"H | LEVEL: BEGINNER | PATTERN BY: NATALIE CRABTREE OF CRABTREE ARTS COLLECTIVE

FREE PATTERN AVAILABLE AT [WWW.MICHAELMILLERFABRICS.COM](http://WWW.MICHAELMILLERFABRICS.COM)



\*THIS IS A DIGITAL REPRESENTATION OF THE QUILT TOP. FABRIC MAY VARY.



## WIDE BACK

108 INCH WIDE BACK COTTON

PAIR OUR WIDE BACK  
**WBX6774-AQUA**  
**VINE MAZE**

WITH THIS PROJECT! USE  
**2 YARDS** FOR BACKING

\*IMAGE SHOWN NOT TRUE TO SCALE

### FABRIC REQUIREMENTS FOR 1 KIT:

SKU	YARDAGE PER QUILT
SC5333-BRIGHT WHITE	1 1/4 YARDS
CX6699-PAPAYA*	5/8 YARD
DDC11640-MULTI	3/4 YARD
DDC11647-BLUE	5/8 YARD
DDC11646-PEACH	1/4 YARD
DDC11645-AQUA	5/8 YARD
DDC11648-CREAM	5/8 YARD
DDC11645-BLACK	3/8 YARD
DDC11644-MULTI	3/8 YARD
DDC11642-ORANGE	1/4 YARD
DDC11641-PINK	1/4 YARD
DDC11641-AQUA	1/2 YARD
DDC11648-PINK	1/4 YARD
DDC11643-RED	1/4 YARD
DDC11648-BLACK**	4 YARDS

\*INCLUDES BINDING

\*\*BACKING