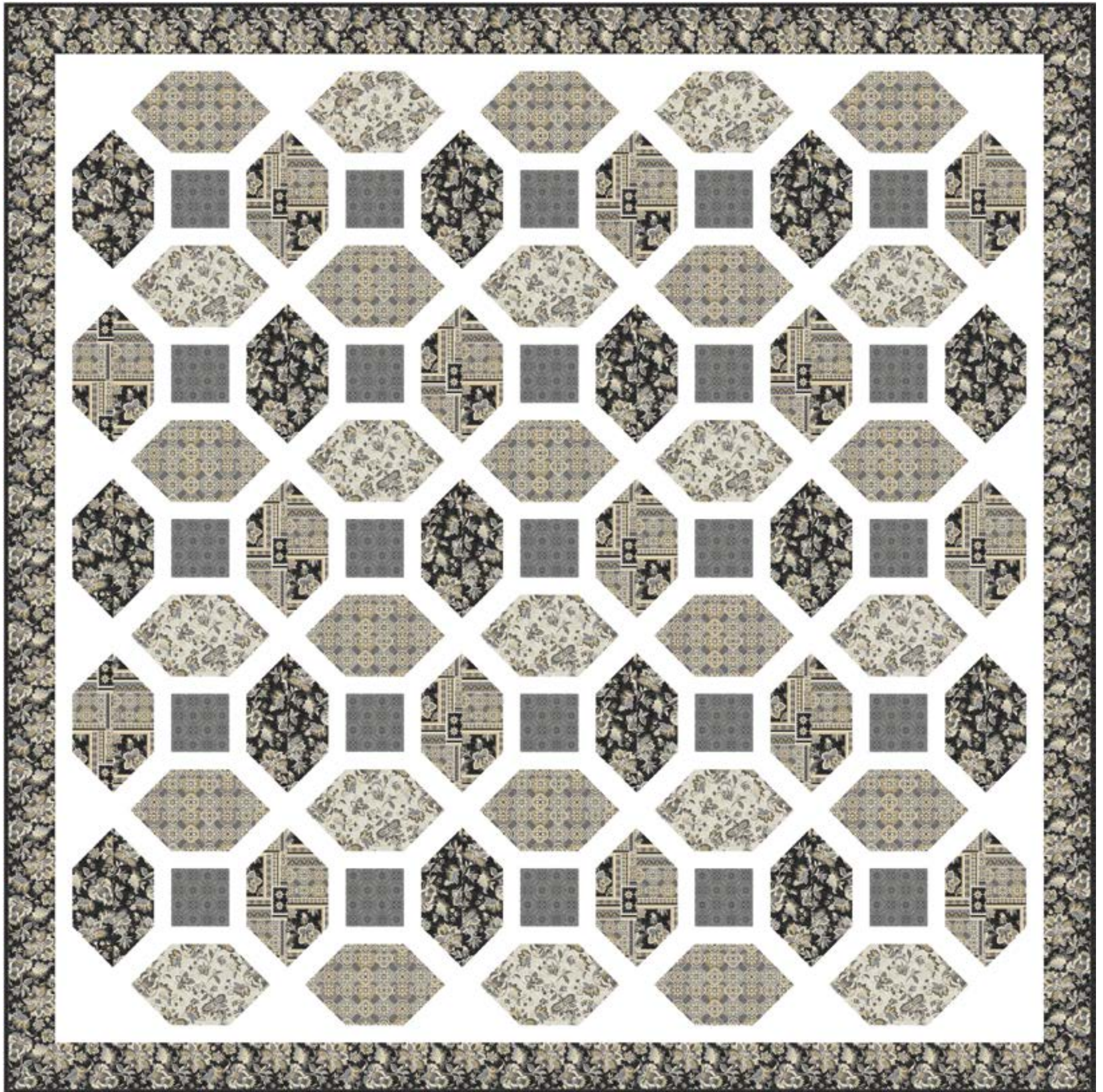


CROWN JEWEL QUILT (HEMATITE)

SIZE: 93"W X 93"H | LEVEL: CONFIDENT BEGINNER

PATTERN BY: CHRISTINE STAINBROOK OF PROJECT HOUSE 360

FREE PATTERN AVAILABLE AT WWW.MICHAELMILLERFABRICS.COM



*THIS IS A DIGITAL REPRESENTATION OF THE QUILT TOP. FABRIC MAY VARY.



WIDE BACK

108 INCH WIDE BACK COTTON

PAIR OUR WIDE BACK
WBX9167-BEIGE POSTSCRIPT
WITH THIS PROJECT! USE
3 YARDS FOR BACKING

*IMAGE SHOWN NOT TRUE TO SCALE

FABRIC REQUIREMENTS FOR 1 KIT:

SKU	YARDAGE PER QUILT
SC5333-BRIGHT WHITE	4 YARDS
CX11639-GRAY	1 1/4 YARDS
DCX11632-CREAM	1 1/4 YARDS
DCX11632-BLACK	1 1/4 YARDS
CX11634-GRAY	1 1/4 YARDS
CX11636-GRAY	7/8 YARD
DCX11635-BLACK	2 3/4 YARDS
CX11636-BLACK*	1 YARD
CX11639-GRAY**	8 1/2 YARDS

*INCLUDES BINDING

**BACKING