

Michael Miller FABRICS

HOLIDAY TOPPER

SIZE: 14" W x 32" H

LEVEL: Beginner

PATTERN BY: Joy Heimark

FABRIC COLLECTION: TIS THE SEASON

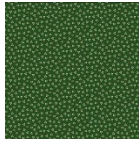


HOLIDAY TOPPER

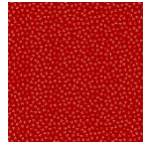
FABRIC REQUIREMENTS



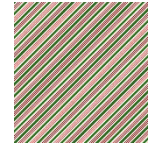
FABRIC A
CM10914 Christmas Flower
Black
1/4 yard



FABRIC B
CM10919 Sparkle Dots Green
1/4 yard



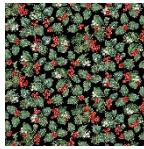
FABRIC C
CM10919 Sparkle Dots Red
1/8 yard



FABRIC D
CM10918 Diagonal Candy Stripe
Cream
1/4 yard



FABRIC E
CM10916 Holly Berries Black
1/4 yard



FABRIC F (Binding)
CM10916 Holly Berries Black
1/4 yard



Backing
CM10915 Christmas Flower Stripe Black
5/8 yard (suggested backing)

HOLIDAY TOPPER

KEY	CUTTING INSTRUCTIONS
A	(1) 8½" x WOF strip. Sub-cut (3) 8½" x 8½" squares.
B	(3) 1½" x WOF strips. Sub-cut (10) 1½" x 8½" rectangles.
C	(1) 1½" x WOF strip. Sub-cut (12) 1½" x 1½" squares.
D	(3) 1½" x WOF strips. Sub-cut (76) 1½" x 1½" squares.
E	(3) 1½" x WOF strips. Set aside for outer border.
F	(3) 2½" x WOF strips. Set aside for binding.
G	Cut a piece of backing to preferred size.
	Batting to fit

HOLIDAY TOPPER

Block Assembly and Sashing

- Row 1: Sew a Fabric B - $1\frac{1}{2}$ " x $8\frac{1}{2}$ " rectangle to one side of each of the three Fabric A squares. Sew one more Fabric B - $1\frac{1}{2}$ " x $8\frac{1}{2}$ " rectangle to the opposite side of the third Fabric A square. Sew these units into a row, matching the quilt diagram. Press all seams toward Fabric B.
- Row 2: Join three Fabric B $1\frac{1}{2}$ " x $8\frac{1}{2}$ " rectangles and four Fabric C $1\frac{1}{2}$ " squares together to make a sashing row. Make two. Press all seams toward Fabric B.
- Row 3: Attach these two sashing rows to the top and bottom of your block row. Press seams toward sashing rows.

Inner Border

Sew (28) Fabric D $1\frac{1}{2}$ " squares together to make a sashing row, alternating the direction of the stripes to make a zigzag pattern. Make two. Press all seams in one direction.

Sew these rows onto the long sides of your quilt center. Press toward quilt center.

Sew (10) Fabric D $1\frac{1}{2}$ " squares together to make a sashing row, alternating the direction of the stripes to make a zigzag pattern. Press all seams in one direction. Sew a Fabric C $1\frac{1}{2}$ " square to both ends of this row. Press toward Fabric C squares. Make two. Sew these rows onto the ends of your quilt center. Press toward quilt center.

Outer Border

Measure the length of your quilt center and cut 2 outer border pieces to that length. (They should be $30\frac{1}{2}$ ".)

Sew these two long borders onto the quilt. Press toward outer borders.

Measure the width of your quilt center and cut 2 outer border pieces to that length. (They should be $14\frac{1}{2}$ ".)

Sew these borders to the ends of your quilt. Press toward outer borders.

Finishing

Layer quilt top, backing and batting together to form a quilt sandwich. Baste and quilt as desired.