

michael miller FABRICS

# Seaside Vacation

SIZE: 57-1/2" x 76-1/2" • LEVEL: Intermediate • PATTERN BY: MARSHA EVANS MOORE  
• FABRIC COLLECTION: Sunshine and Sancastles

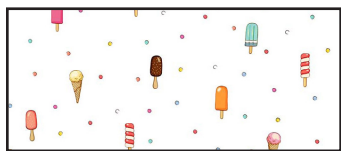


THIS IS A DIGITAL REPRESENTATION OF THE QUILT TOP, FABRIC MAY VARY.

**PLEASE NOTE:** BEFORE BEGINNING YOUR PROJECT, CHECK FOR ANY PATTERN UPDATES AT [MICHAELMILLERFABRICS.COM](http://MICHAELMILLERFABRICS.COM)'S FREE PROJECTS SECTION.

p.212.704.0774 | [info@michaelmillerfabrics.com](mailto:info@michaelmillerfabrics.com) | [www.michaelmillerfabrics.com](http://www.michaelmillerfabrics.com)

# Seaside Vacation



**FABRIC A**  
DC11084\_White  
1/4



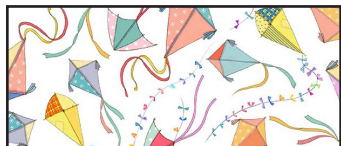
**FABRIC B**  
DC11086\_Aqua  
5/8 yard



**FABRIC C**  
DC11087\_Breeze  
3/8 yard



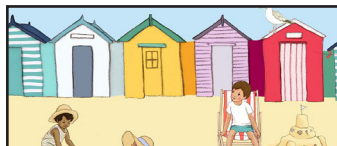
**FABRIC D**  
DC11088\_Breeze  
1/4 yard



**FABRIC E**  
DC11089\_White  
1/4 yard



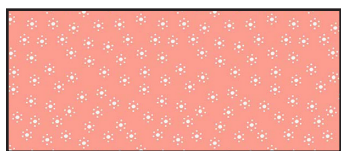
**FABRIC F**  
DC11091\_Yellow  
3/8 yard



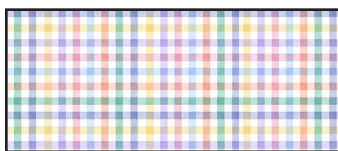
**FABRIC G**  
DC11092\_Sky  
1-1/4 yards



**FABRIC H**  
DC11093\_Sage  
1-1/8 yards



**FABRIC I**  
DC11093\_Blush  
3/4 yards



**FABRIC J**  
DC11094\_Multi  
1/2 yard



**FABRIC K**  
DC11096\_Multi  
1-3/4 yards



# Seaside Vacation

Follow instructions on page 3 to make the pattern for wave appliqué. Cut the wave pattern from fabric indicated below.

WOF = width of fabric. LOF = length of fabric

KEY	CUTTING INSTRUCTIONS
<b>A</b>	(1) 4-1/2" x 40-1/2" strip.
<b>B</b>	(2) 7-1/2" x 40-1/2" strips.
<b>C</b>	(1) 6" x 40-1/2" strip.
<b>D</b>	(1) 4-3/4" x 40-1/2" strip.
<b>E</b>	(1) 4-3/4" x 40-1/2" strip.
<b>F</b>	(3) wave appliqués.
<b>G</b>	Fussy cut (2) 12" x 40-1/2" strips, centered over fabric borders.
<b>H</b>	(5) 1-1/2" x 42" strips, sew short ends together. Subcut (2) 1-1/2" x 55-1/2" borders and (2) 1-1/2" x 42-1/2" borders. <b>FOR BINDING:</b> (7) 2-1/4" x 42" strips, sew short ends together. (2) wave appliqués.
<b>I</b>	(7) 1-3/4" x 42" strips, sew short ends together. Subcut (2) 1-3/4" x 57-1/2" borders and (2) 1-3/4" x 74" borders. (2) wave appliqués.
<b>J</b>	(6) 1-3/4" x 42" strips, sew short ends together. Subcut (2) 1-3/4" x 57-1/2" borders and (2) 1-3/4" x 45" borders.
<b>K</b>	Fussy cut (4) 5-1/2" x 30-1/4" LOF borders with (4) printed blocks and (3) 7-1/2 x WOF borders. See Borders step 6-9 for detailed instructions.
	Batting 66" x 85"





# Seaside Vacation

## ADDITIONAL MATERIALS

3-3/4 yards backing fabric

Thread to match fabrics

Sewing machine

Rotary cutter, ruler and mat

Basic sewing supplies

Black embroidery floss or thread for fish eyes

**Optional:** paper backed fusible webbing for raw edge appliqué

**Optional:** paper or freezer paper for turned edge appliqué

## WAVE APPLIQUÉ PATTERN

Make 5 copies of the wave template on page 7. Cut out the patterns. Cut the left seam allowance from four pieces.

Line up the pieces as shown below. Overlap the patterns matching the side seamlines; glue or tape patterns together. If using a raw edge appliqué method, trim seam allowance from top and bottom edges.



For turned edge appliqué



For raw edge appliqué



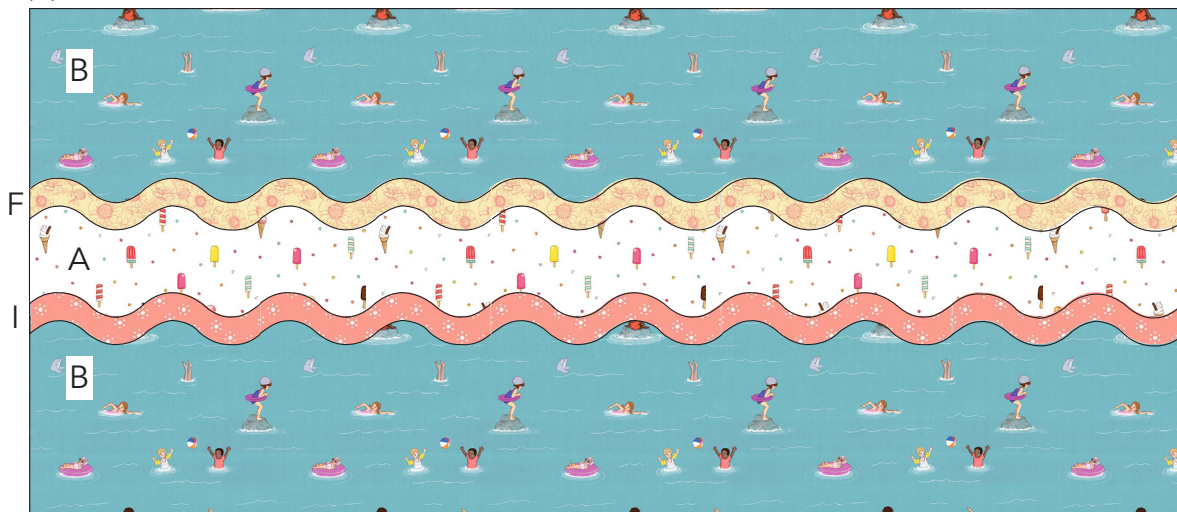
## QUILT CENTER

1. Sew (1) fabric **B** 7-1/2" x 40-1/2" strip to top and bottom of (1) fabric **A** 4-1/2" x 40-1/2" strip.



# Seaside Vacation

2. Using your favorite appliqué method, appliqué (1) fabric **F** wave centered over upper seamline. Appliqué (1) fabric **I** wave centered over lower seamline.



3. Following the Quilt Layout on page 6, sew (1) **G** 12" x 40-1/2" strip to the top and the bottom of the center. Appliqué (1) fabric **I** wave centered over upper seamline. Appliqué (1) fabric **F** wave centered over lower seamline.

4. Sew (1) **C** 6" x 40-1/2" strip followed by (1) **E** 4-3/4" x 40-1/2" strip to the top of the center. Appliqué (1) fabric **F** wave and (1) fabric **H** wave centered over the seamlines.

5. Sew (1) **D** 4-3/4" x 40-1/2" strip to the bottom of the center. Appliqué (1) fabric **H** wave centered over the seamline. Quilt center should measure 40-1/2" x 55-1/2" including seam allowance.

## BORDERS

6. Fussy cut (4) **K** LOF side borders 5-1/2" x 30-1/4" with 3/4" blue above and below the printed blocks. Printed blocks in borders can vary. Make 4.

7. Sew ends of (2) **K** side borders together as shown in the Quilt Layout on page 6. Border should measure 5-1/2" x 60" including seam allowance. Make 2.



# Seaside Vacation

**8.** Fussy cut (3) 7-1/2" x WOF strips centered over printed blocks. Trim ends as shown. Sew 3/4" ends together. Make 1 each.

Left strip



Center strip

3/4"



Right strip



**9.** Cut (2) 7-1/2" x 55" top and bottom borders with 10 panels centered as shown in the Quilt Layout on page 6. Make 2.

## QUILT ASSEMBLY

**10.** Sew (1) **H** 1-1/2" x 55-1/2" border to sides of quilt center. Sew (2) **H** 1-1/2" x 42-1/2" borders to top and bottom of quilt.

**11.** Sew (1) **J** 1-3/4" x 57-1/2" border to sides of quilt. Sew (2) **J** 1-3/4" x 45" borders to top and bottom of quilt.

**12.** Sew (1) **K** 5-1/2" x 60" border to each side of quilt. Sew (2) **K** 7-1/2" x 55" borders to top and bottom of quilt.

**13.** Sew (1) **I** 1-3/4" x 74" border to each side of quilt. Sew (2) **I** 1-3/4" x 57-1/2" border to top and bottom of quilt.



# Seaside Vacation

I 1-3/4" x 57-1/2"

QUILT LAYOUT

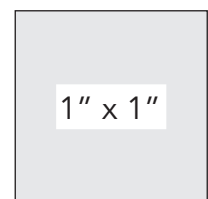
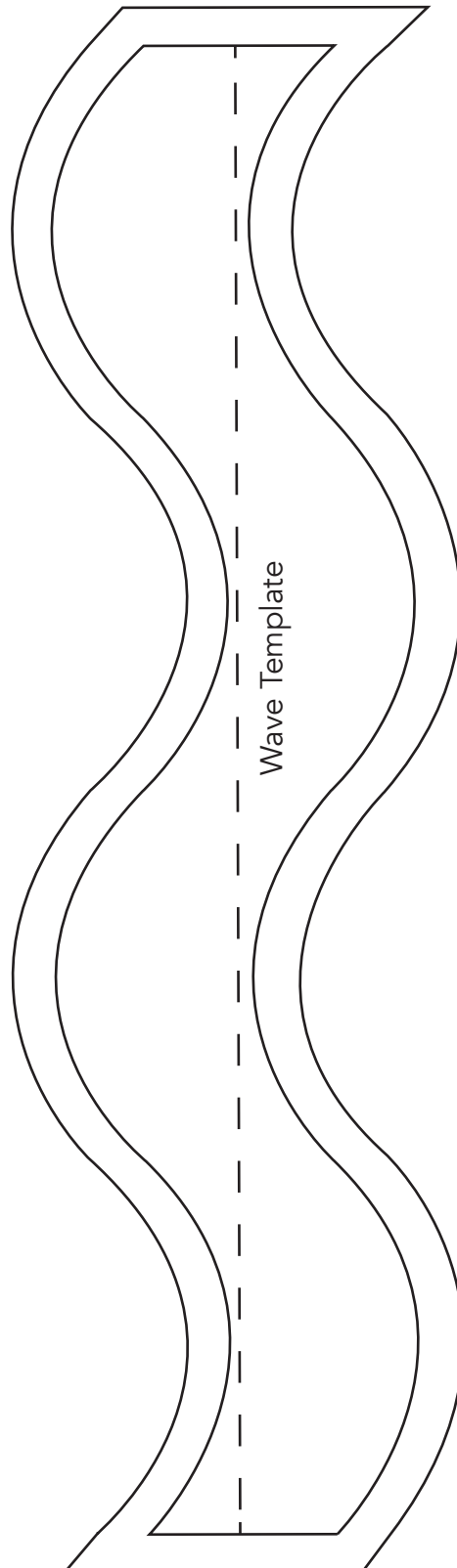
I 1-3/4" x 74"



**FINISHING:** Layer quilt top, batting and backing together to form quilt sandwich. Baste and quilt as desired. Bind using nine fabric H 2-1/4" strips.



# Seaside Vacation



Print at 100%.