

FOREST FINDINGS QUILT

SIZE: 74"W X 74"H | LEVEL: BEGINNER | PATTERN BY: NATALIE CRABTREE OF CRABTREE ARTS COLLECTIVE
FREE PATTERN AVAILABLE AT WWW.MICHAELMILLERFABRICS.COM

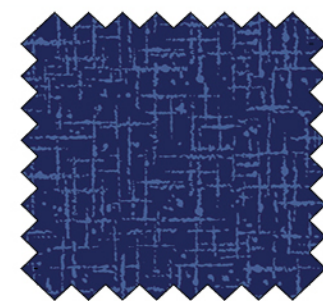


*THIS IS A DIGITAL REPRESENTATION OF THE QUILT TOP. FABRIC MAY VARY.

FABRIC REQUIREMENTS FOR 1 KIT:

SKU	YARDAGE PER QUILT
SC5333-MOON	3 1/2 YARDS
DCX10060-PAPAYA*	1 1/8 YARDS
DC11372-SPRUCE	1 5/8 YARDS
DCX10060-CARAMEL	3/8 YARD
DC11373-SPRUCE	5/8 YARD
DCX10060-SALMON	3/8 YARD
DC11376-WHITE	1/4 YARD
DC11378-TEAL	5/8 YARD
DCX10060-TAN	3/4 YARD
DC11375-SPRUCE	1/4 YARD
DC11377-NAVY**	4 3/4 YARDS

*INCLUDES BINDING
 **BACKING



WIDE BACK

108 INCH WIDE BACK COTTON

PAIR OUR WIDE BACK
WBX9169-NAVY SISAL
 WITH THIS PROJECT! USE
2 1/2 YARDS FOR BACKING

*IMAGE SHOWN NOT TRUE TO SCALE