

COUNTY FAIR QUILT

SIZE: 66"W X 74"H | LEVEL: BEGINNER

PATTERN BY: NATALIE CRABTREE OF CRABTREE ARTS COLLECTIVE

FREE PATTERN AVAILABLE AT WWW.MICHAELMILLERFABRICS.COM

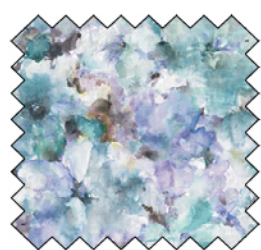
FABRIC REQUIREMENTS FOR 1 KIT:

SKU	YARDAGE PER QUILT
SC5333-SOFT WHITE	3 1/4 YARDS
DCX10060-CARAMEL	1 FAT EIGHTH
DC11340-BLUE	1 FAT EIGHTH
DCX10060-PAPAYA	1 FAT EIGHTH
DC11343-CREAM	1 FAT EIGHTH
DCX10060-AQUAMARINE	1 FAT EIGHTH
DC11347-CREAM	1 FAT EIGHTH
DCX10060-APRICOT	1 FAT EIGHTH
DC11346-CREAM	1 FAT EIGHTH
DCX10060-EMERALD	1 FAT EIGHTH
DC11346-BLUE	1 FAT EIGHTH
DCX10060-VIOLET	1 FAT EIGHTH
DC11349-CREAM	1 FAT EIGHTH
DCX10060-CORNFLOWER	1 FAT EIGHTH
DC11350-MULTI	2 YARDS
DCX10060-LAVA	1 FAT EIGHTH
DC11345-BLUE	1 FAT EIGHTH
DC11340-CREAM	1 FAT EIGHTH
DCX10060-PARCHMENT	1 FAT EIGHTH
DC11410-GREEN	1 FAT EIGHTH
DCX10060-ICE BLUE	1 FAT EIGHTH
DC11410-BLUE	1 FAT EIGHTH
DC11342-BLUE	1 FAT EIGHTH
DCX10060-SALMON	1 FAT EIGHTH
DC11342-CREAM	1 FAT EIGHTH
DCX10060-SILVER	1 FAT EIGHTH
DC11341-GREEN	1 FAT EIGHTH
DCX10060-PEACH	1 FAT EIGHTH
DC11344-CREAM	1 FAT EIGHTH
DCX10060-SKY*	1 3/4 YARDS
DC11342-BLUE**	4 1/4 YARDS

*INCLUDES BINDING | **BACKING



*THIS IS A DIGITAL REPRESENTATION OF THE QUILT TOP. FABRIC MAY VARY.



WIDE BACK

108 INCH WIDE BACK COTTON

PAIR OUR WIDE BACK
WBX9414-BLUE WATERCOLORS
WITH THIS PROJECT! USE
2 1/2 YARDS FOR BACKING

*IMAGE SHOWN NOT TRUE TO SCALE

michael miller FABRICS

WWW.MICHAELMILLERFABRICS.COM | INFO@MICHAELMILLERFABRICS.COM | 212.704.0774