

michael miller FABRICS

Reef Life

SIZE: 49-1/2" x 63-1/2" • LEVEL: Intermediate • PATTERN BY: MARSHA EVANS MOORE
• FABRIC COLLECTION: Jewels of the Sea



THIS IS A DIGITAL REPRESENTATION OF THE QUILT TOP, FABRIC MAY VARY.

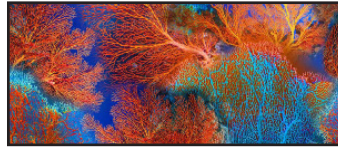
PLEASE NOTE: BEFORE BEGINNING YOUR PROJECT, CHECK FOR ANY PATTERN UPDATES AT MICHAELMILLERFABRICS.COM'S FREE PROJECTS SECTION.

p.212.704.0774 | info@michaelmillerfabrics.com | www.michaelmillerfabrics.com

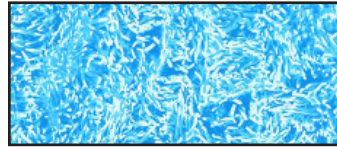
Reef Life



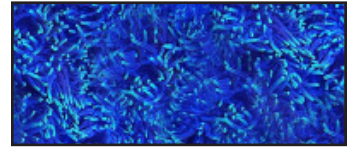
FABRIC A
DCX11121
1 panel



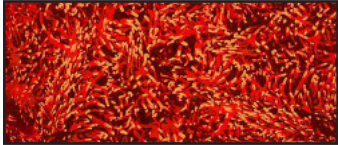
FABRIC B
DCX11122_Coral
3/8 yard



FABRIC C
DCX11123_Aqua
5/8 yard



FABRIC D
DCX11123_Cobalt
5/8 yard



FABRIC E
DCX11123_Coral *
3/4 yard



FABRIC F
DCX11124_Bisque
1/4 yard



FABRIC G
DCX11124_Light Aqua
1/2 yard



FABRIC H
DCX11125_Cobalt
3/8 yard



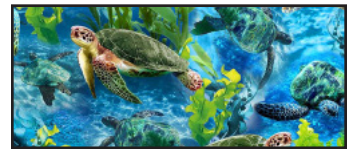
FABRIC I
DCX11126_Aquamarine
3/8 yard



FABRIC J
DCX11130_Jade
3/8 yard



FABRIC K
DCX11131_Azure
1/2 yard



FABRIC L
DCX11132_Seaweed
3/8 yard

*includes binding



Reef Life

Note: Please read the entire pattern before you begin. See page 3 for template assembly instructions. For turned under appliqué techniques, trace wave templates and cut along the solid outer line. For raw edge appliqué techniques, trace wave templates and cut along the inner dashedline. Templates are found on pages 7 -11.

KEY	CUTTING INSTRUCTIONS
A	Centering design, <i>fussy cut</i> : 23-1/2" x 41-1/2" rectangle.
B	(2) Template 3.
C	(9) 2" x 42" strips, sew short ends together. Subcut (2) 2" x 59-1/2" strips, (2) 2" x 49-1/2" strips, (2) 2" x 41-1/2" strips and (2) 2" x 26-1/2" strips.
D	(4) 2-1/2" x 42" strips, sew short ends together. Subcut (2) 2-1/2" x 30-1/2" strips and (2) 2-1/2" x 44-1/2" strips. (3) 3-1/4" x WOF strips, sew short ends together. Subcut (2) Top and Bottom Wave patterns.
E	(8) Template 4. FOR BINDING: (6) 2-1/4" x 42" strips, sew short ends together.
F	(8) Template 4.
G	(3) 4-1/2" X 42" strips; sew ends together. Subcut (1) Upper Border and (1) Lower Border.
H	(2) Template 3.
I	(2) Template 3.
J	(4) Template 3.
K	(3) 4-1/2" X 42" strips; sew ends together. Subcut (1) Upper Border and (1) Lower Border. (2) Template 1. (2) Template 2.
L	(4) Template 3.

Reef Life

ADDITIONAL MATERIALS

3-1/4 yards backing fabric

Thread to match fabrics

Basic sewing supplies

58" x 70" batting

Sewing machine

Rotary cutter, ruler and mat

Template plastic

Optional:

For turned under edge appliqué: freezer paper or other template paper.

For raw edge appliqué: paper backed fusible webbing.

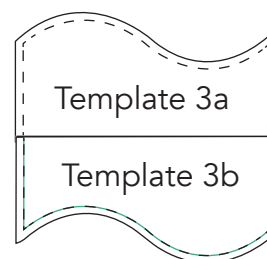
TEMPLATE ASSEMBLY

1. Make (3) copies of template of pages 7-11. Cut out templates 1, 2, 3a, 3b, 5a, 5b, 6a and 6b along the solid outer lines.

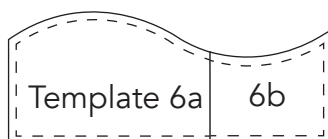
2. Overlap template 3b over the shaded area of template 3a matching the solid line. Glue or tape the pieces together. Make 1.

3. Join templates 5a and 5b and 6a and 6b in the same way. Make 3 each.

Template 3



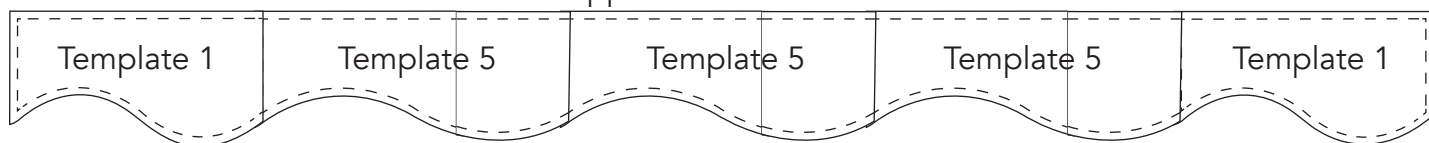
Make 1



Make 3 each

4. To make the patterns for the top and bottom border, trim the seam allowance from the right side edge of (1) template 1 and (3) template 5. Arrange these pieces plus (1) untrimmed template 1 as shown. Overlap the right side edge over the adjacent piece. Glue or tape together to make the upper section. Make 1.

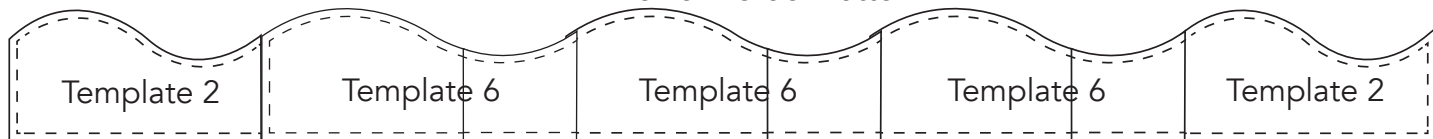
Upper Border Pattern



Make 1

5. Repeat step 4 using (2) template 2 and (3) template 6 to make the lower section. Make 1.

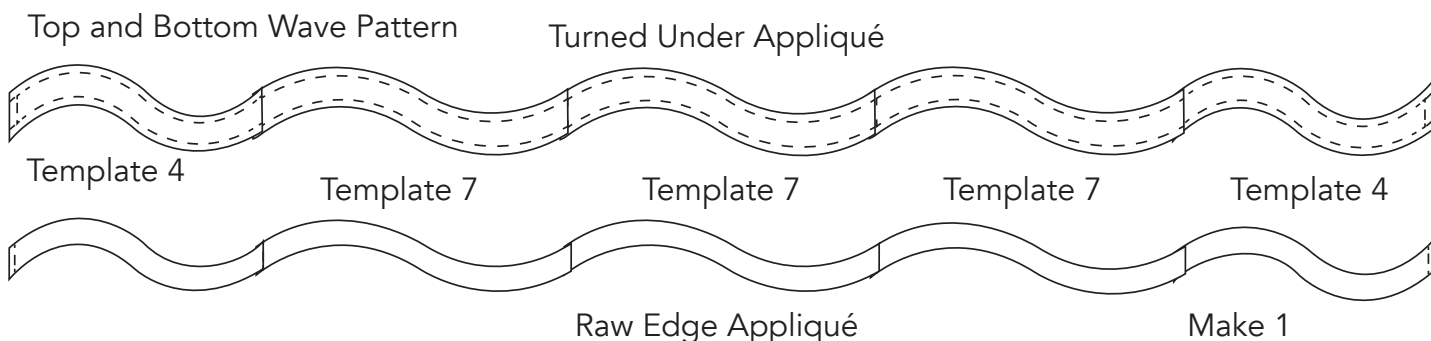
Lower Border Pattern



Make 1

Reef Life

6. Repeat step 4 using (2) template 4 and (3) template 7 to make (1) long wave pattern. For raw edge appliqué techniques, trim the top and bottom curved edges along the dashed line. Make 1.



SIDE APPLIQUÉ BORDERS

7. Prepare curved edges of (8) **E** and (8) **F** Wave Template 4 using your preferred appliqué method.

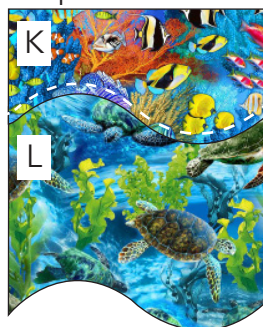
8. Overlap curved edges of (1) **K** Template 1 and (1) **L** Template 3 matching the seamline. Sew along the seamline.

9. Center (1) **F** Wave appliqué over the seamline. Stitch in place along the long curved edges.

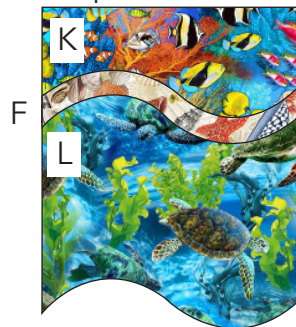
10. Repeat steps 8-9 to add **J, B, I, H, J** and **L** Template 3 pieces 1 at a time. Appliqué **E** and **F** Wave appliqués centered over the seams before adding next Template 3 piece. Add (1) **K** Template 2 to the bottom of the border. Appliqué (1) **E** Wave centered over the seam. Border should measure 48-1/2" x 8-1/2". Make 2.

Step 10

Step 8



Step 9

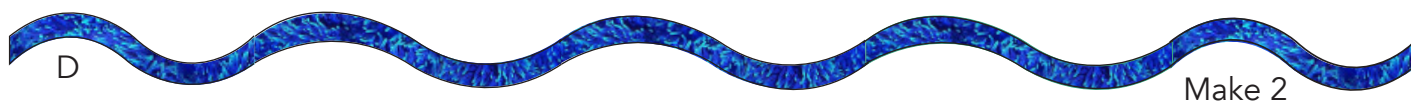


Make 2

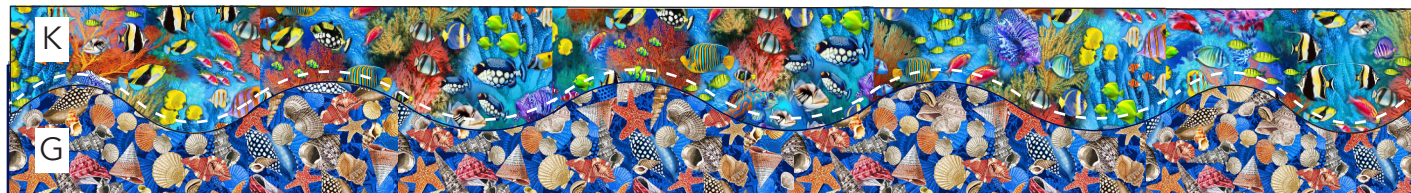
Reef Life

TOP AND BOTTOM APPLIQUÉ BORDERS

11. Prepare curved edges of (2) **D** Top and Bottom Wave patterns using your preferred appliqué method. Make 2.



12. Overlap curved edges of (1) **K** Upper Border Section and (1) **G** Lower Border Section matching the seamlines. Sew along the seamline.



13. Center (1) **D** Top and Bottom Wave appliqué over the seamline. Stitch in place along the long curved edges to make the bottom border. Border should measure 6-1/2" x 46-1/2" including seam allowance. Make 1.



14. Repeat steps 12-13 using (1) **G** Upper Border Section and (1) **K** Lower Border Section to make the top border. Make 1.



QUILT ASSEMBLY

15. Following the Quilt Layout on page 6, sew (1) **C** (2) 2" x 41-1/2" strip to each side of (1) **A** 23-1/2" x 41-1/2" rectangle. Sew (1) **C** 2" x 26-1/2" strip to top and bottom of quilt.

16. Sew (1) **D** 2-1/2" x 44-1/2" strip to each side of quilt. Sew (1) **D** 2-1/2" x 30-1/2" strip to top and bottom of quilt.

17. Sew (1) side appliqué border to each side of quilt. Sew (1) top and bottom appliqué border to top and bottom of quilt.

18. Sew (1) **C** 2" x 60-1/2" strip to each side of quilt. Sew (1) **C** 2" x 49-1/2" strip to top and bottom of quilt.

Reef Life

Quilt Layout

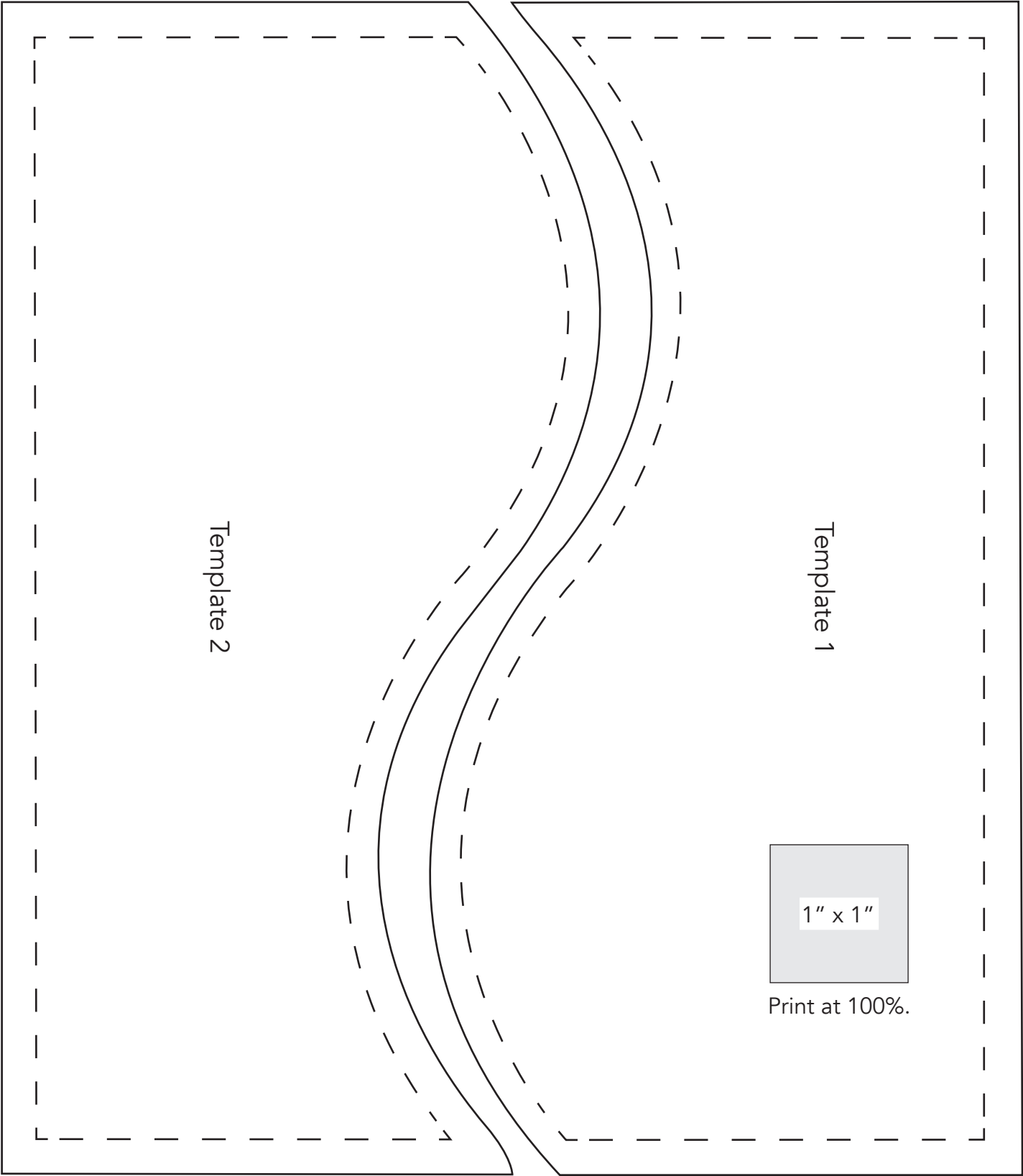


FINISHING: Layer quilt top, batting and backing together to form quilt sandwich. Baste and quilt as desired. Bind using six fabric **E** 2-1/4" strips.

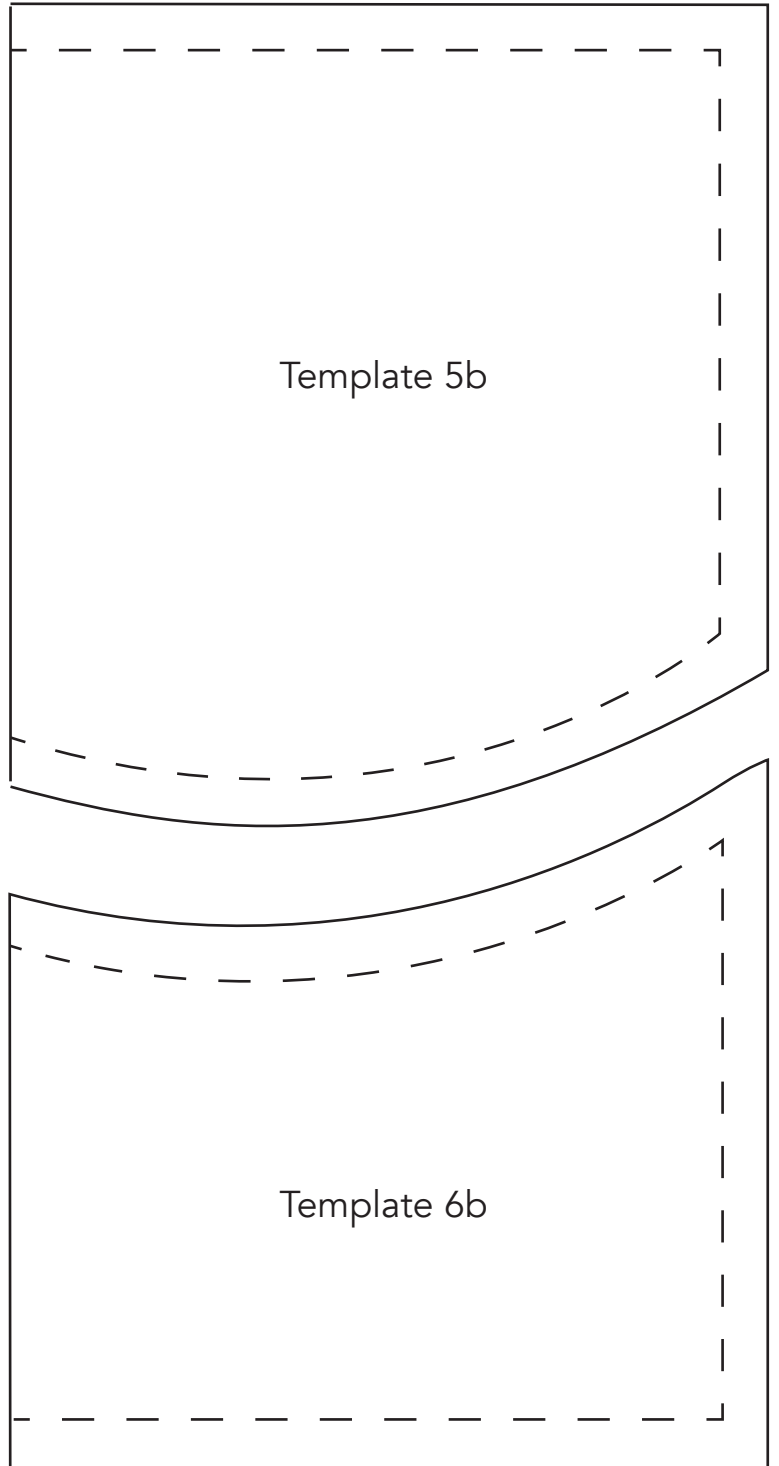
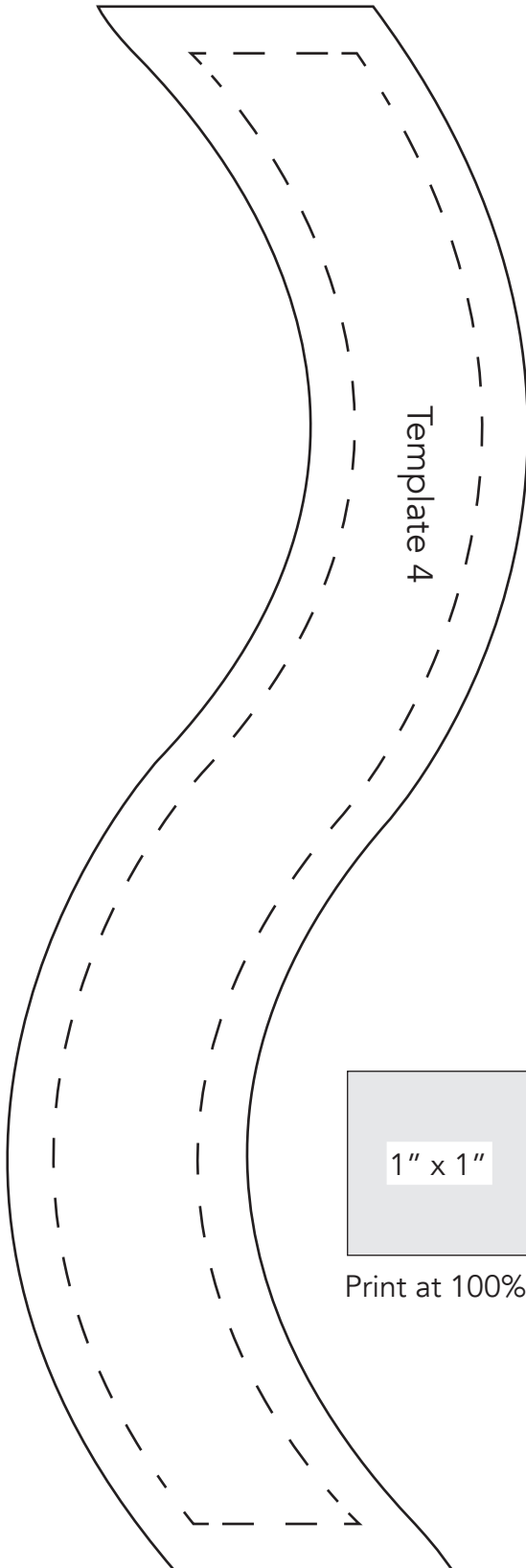


Reef Life

TEMPLATES



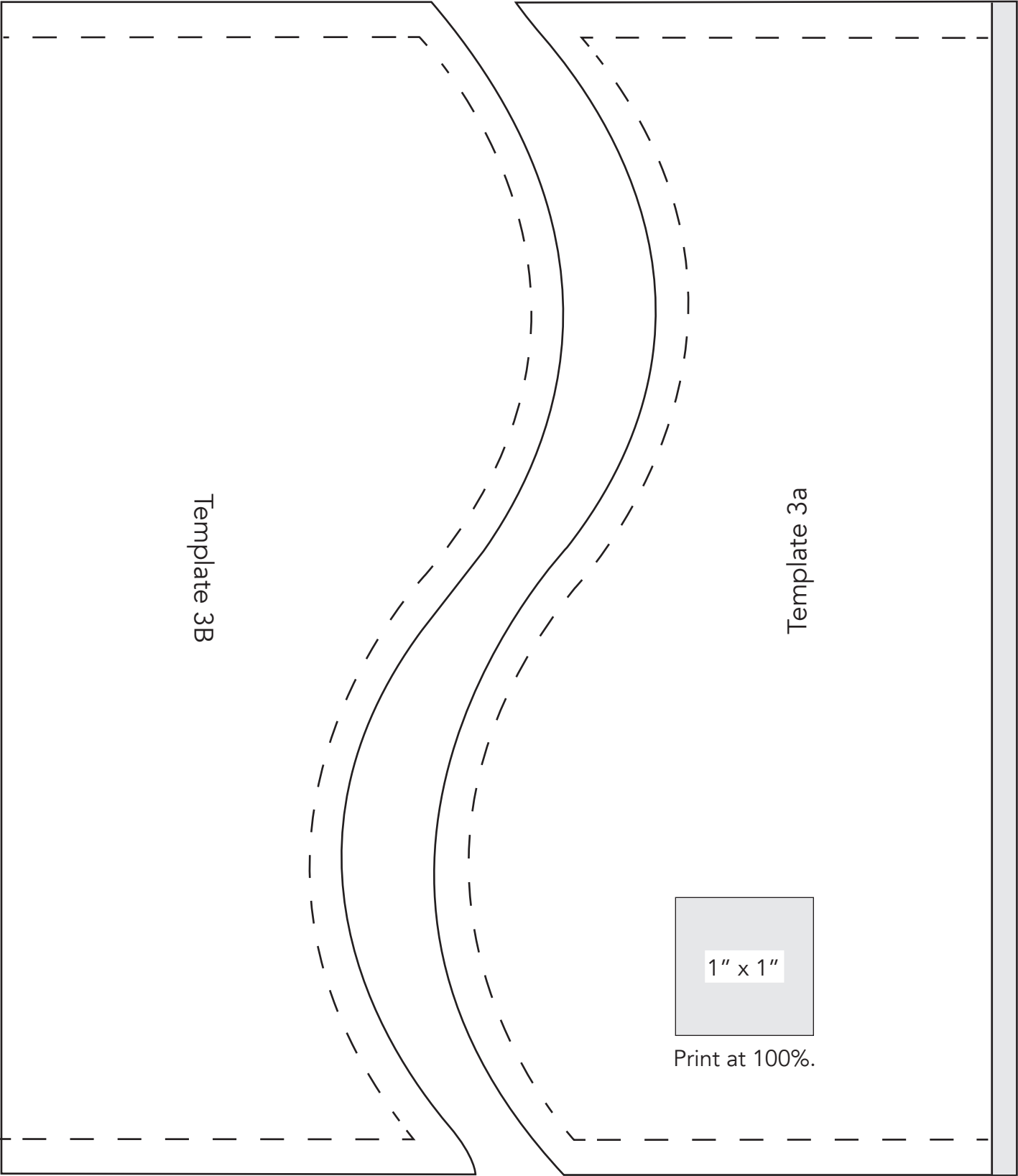
TEMPLATES





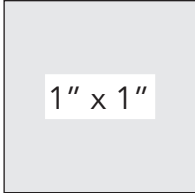
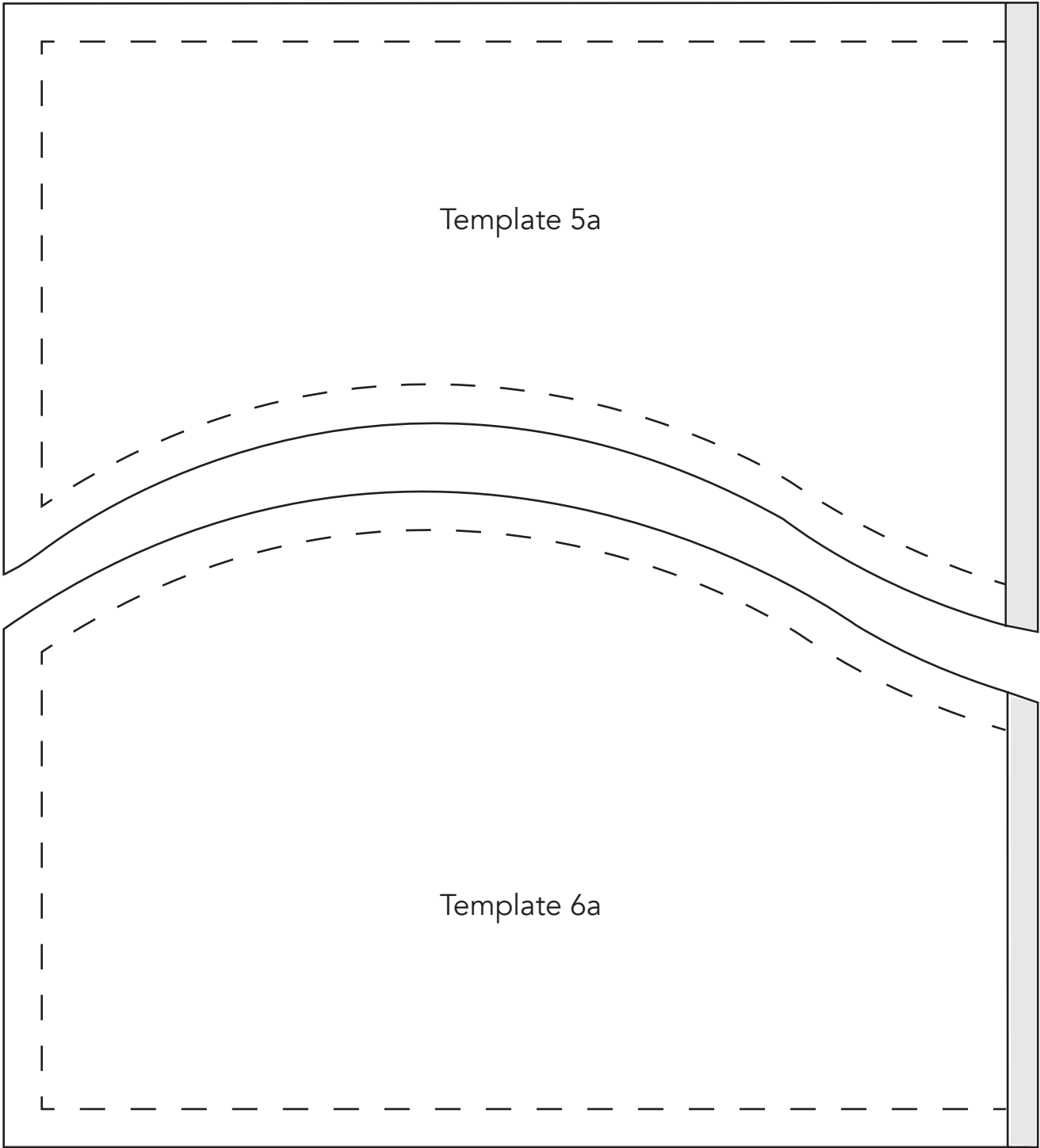
Reef Life

TEMPLATES





TEMPLATES

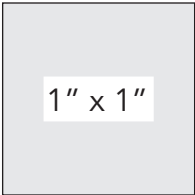
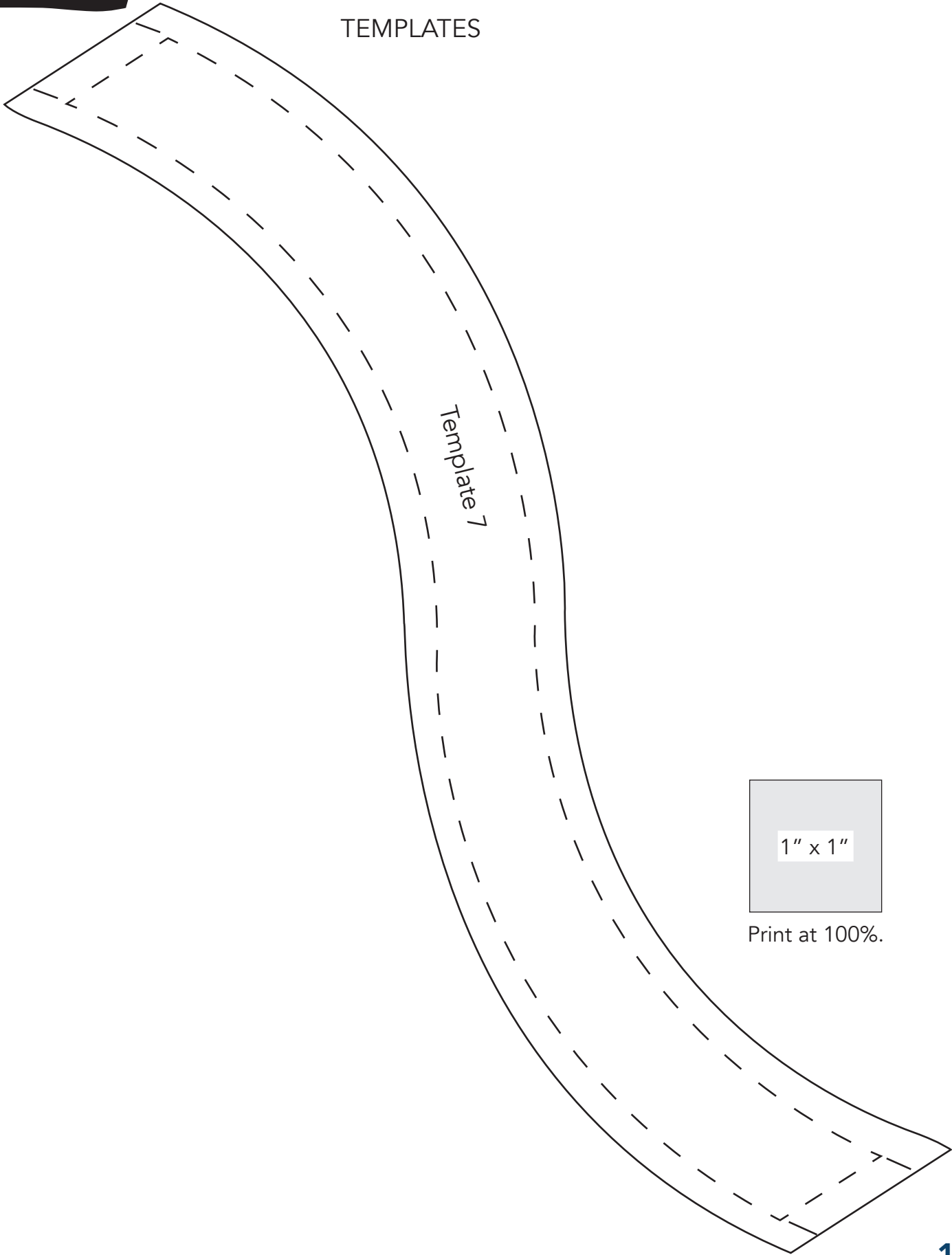


Print at 100%.



Reef Life

TEMPLATES



Print at 100%.