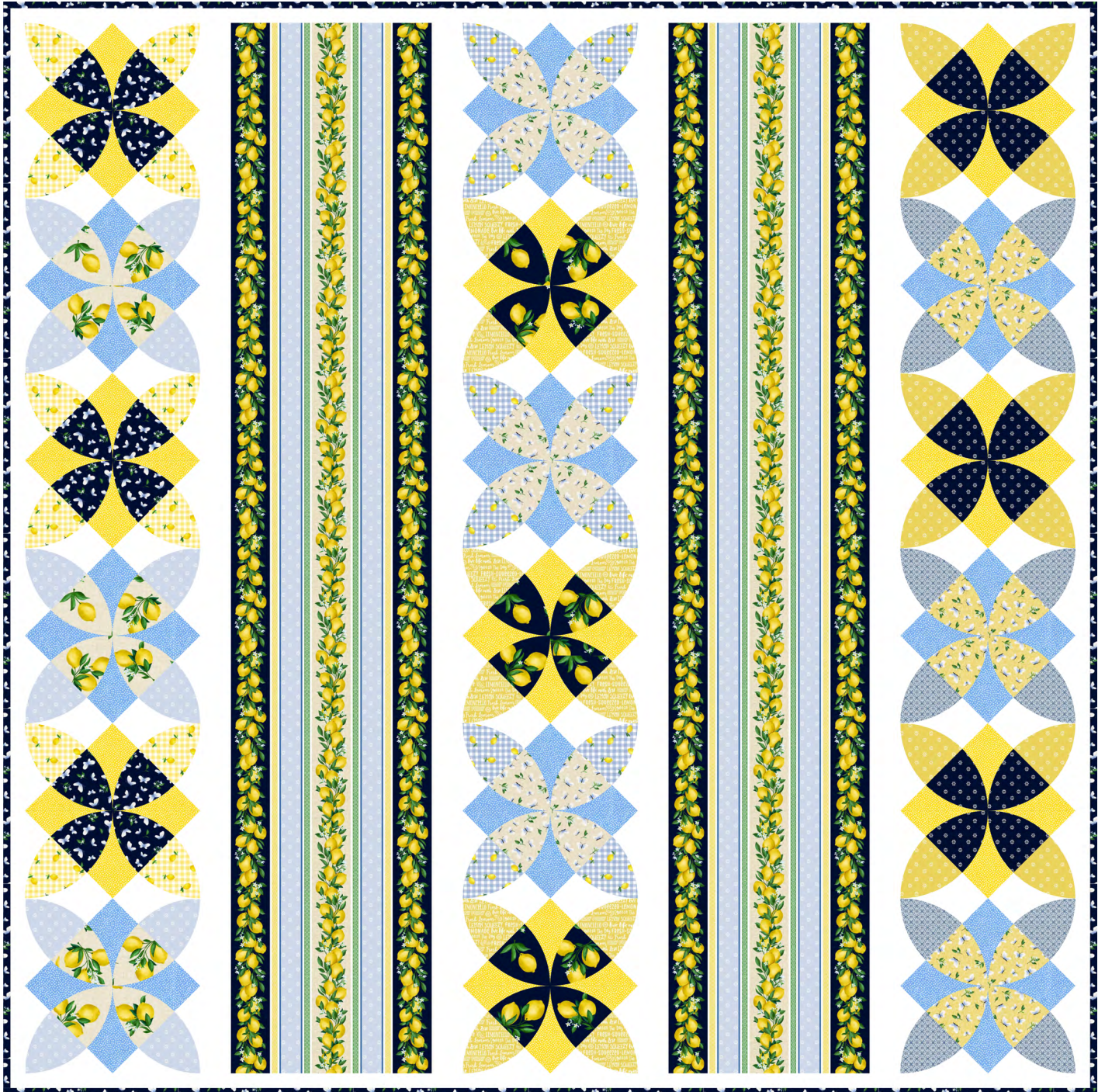


michael miller FABRICS

LEMON TREES

SIZE: 74"W x 74"H • LEVEL: INTERMEDIATE • PATTERN BY: NATALIE CRABTREE • LEMON FRESH FABRIC COLLECTION
PATTERN AVAILABLE ON: WWW.MICHAELMILLERFABRICS.COM

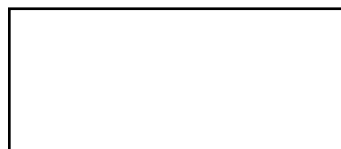


THIS IS A DIGITAL REPRESENTATION OF THE QUILT TOP, FABRIC MAY VARY.

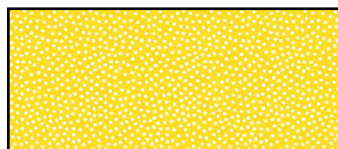
PLEASE NOTE: BEFORE BEGINNING YOUR PROJECT, CHECK FOR ANY PATTERN UPDATES AT MICHAELMILLERFABRICS.COM'S FREE PROJECTS SECTION.

p.212.704.0774 | info@michaelmillerfabrics.com | www.michaelmillerfabrics.com

LEMON TREES



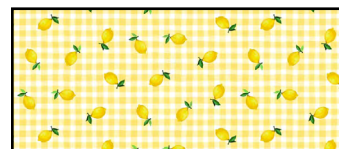
FABRIC A
Cotton Couture
SC_5333 Bright White
2 1/4 yards



FABRIC B
CX1065
Garden Pindot Lemon
3/4 yard



FABRIC C
CX1065
Garden Pindot
Cornflower
3/4 yard



FABRIC D
DC10562
Lemon Squeeze Yellow
1/4 yard



FABRIC E
DC10563
Easy Peasy Yellow
1/4 yard



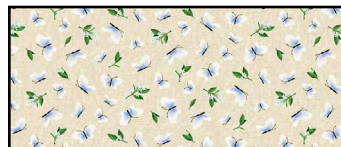
FABRIC F
DC10566
Dew Drops Yellow
1/4 yard



FABRIC G
DC10757
Butterfly Texture Yellow
1/4 yard



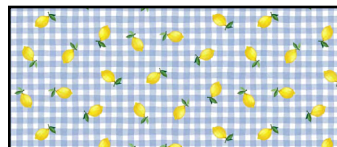
FABRIC H
DC10755
Lemon Texture Beige
1/4 yard



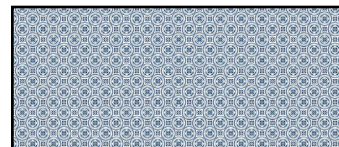
FABRIC I
DC10757
Butterfly Texture Beige
1/4 yard



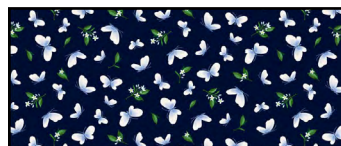
FABRIC J
DC10566
Dew Drops Blue
1/4 yard



FABRIC K
DC10562
Lemon Squeeze Blue
1/4 yard



FABRIC L
DC10567
Tuscan Tiles Blue
1/4 yard



FABRIC M
DC10564
Lemon Verbena Navy
1 yard (includes binding)



FABRIC N
DC10561
Lots A Lemons Navy
1/4 yard



FABRIC O
DC10566
Dew Drops Navy
1/4 yard



FABRIC P
DC10568
Lemon Twist Multi
2 1/4 yards

BACKING
4 5/8 yards



LEMON TREES

KEY	CUTTING INSTRUCTIONS
A	<ul style="list-style-type: none">First, cut (8) 2 ½" x WOF strips. Piece (2) strips for length using a diagonal seam. Repeat to create (4) long strips. Trim each strip to measure 2 ½" x 72 ½" unfinished for vertical sashing.Second, cut (8) 1 ½" x WOF strips. Piece (2) strips for length using a diagonal seam. Repeat to create (4) long strips. Trim the following:<ul style="list-style-type: none">(2) 1 ½" x 72 ½" Side Borders.(2) 1 ½" x 74 ½" Top/Bottom Borders.Using the remaining yardage, cut (6) 6 ½" x WOF strips. Unfold the WOF strips. Subcut the following from the WOF strips (You may opt to reduce cutting time by stacking unfolded WOF strips to cut between (2-3) Template B at a time, or (2-3) Template C at a time). <u>Turn the template 180° after each cut to best utilize fabrics. Cut up to (26) Templates per each WOF strip.</u><ul style="list-style-type: none">(72) Template B.(72) Template C.
B	<ul style="list-style-type: none">Cut (3) 6 ½" x WOF strips. Unfold the WOF strips. Subcut the following from the WOF strips (You may opt to reduce cutting time by stacking unfolded WOF strips to cut between (2-3) Template B at a time, or (2-3) Template C at a time). <u>Turn the template 180° after each cut to best utilize fabrics. Cut up to (26) Templates per each WOF strip.</u><ul style="list-style-type: none">(36) Template B.(36) Template C.
C	<ul style="list-style-type: none">Repeat the Fabric B Cutting Instructions with Fabric C.
M	<ul style="list-style-type: none">Cut (8) 2 ¼" x WOF strips for binding.Set the remaining yardage measuring approximately 18" x WOF aside for the last cutting instruction below.
P	<ul style="list-style-type: none">Fussy cut (2) LOF strips. Each strip should feature (1) navy lemon stripe on either side of the LOF strip, (2) light blue polka dot stripes and (1) beige lemon stripe in the center of the LOF strip. The LOF strips should measure approximately 14 ½" wide. Be sure to cut a ¼" outside of each navy lemon stripe to allow for seam allowances and to prevent sewing into the navy lemon stripes. Reference the quilt image for assistance with fussy cutting. Trim each strip to 72 ½" long unfinished (<i>width may vary slightly</i>).
D-O	<ul style="list-style-type: none">From each fabric, cut (12) Template A.

WOF = Width of Fabric, LOF = Length of Fabric, RST = Right Sides Together

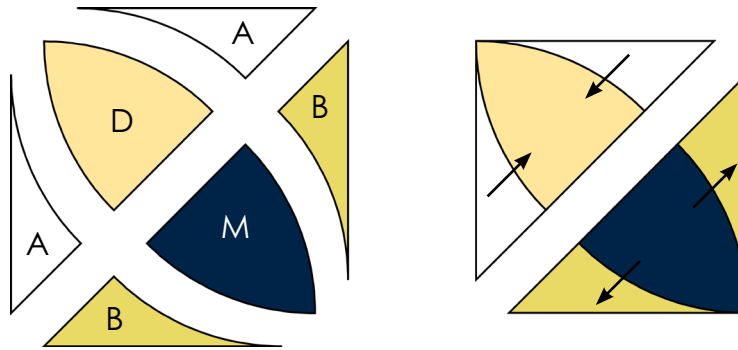
LEMON TREES

Piecing Instructions:

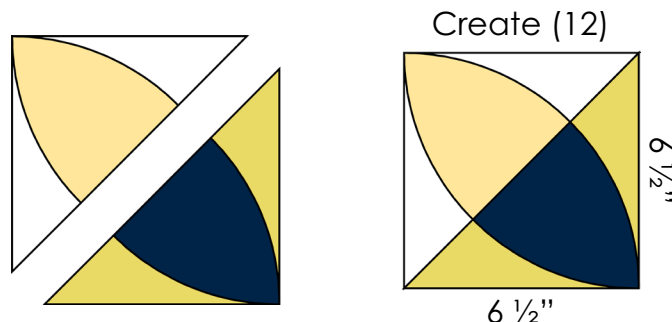
Block Assembly:

Designer Note: Blocks are assembled in (6) colorways. Assembly diagrams are shown using solids representing Fabrics A, B, D and M. Reference Step 4 for fabric combinations for the remaining (5) block colorways.

1. Arrange (1) Fabric D Template A and (1) Fabric M Template A as shown. Place Template B and C pieces cut from Fabrics A and B around the Template A pieces as shown to form a block quadrant.
2. Sew the Fabric A template pieces to the sides of the Fabric D Template A piece using curved piecing techniques. **Press toward Template A.**
3. Next, sew the Fabric B template pieces to the sides of the Fabric M Template A piece using curved piecing techniques. **Press toward Template B and C pieces.**

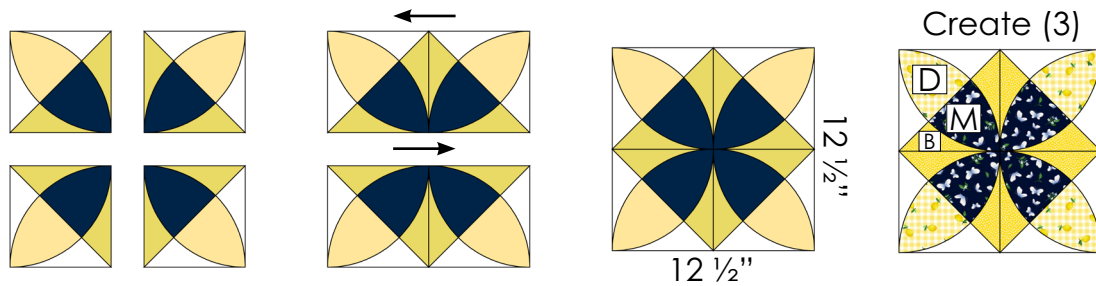


4. Using pins to align and nestle seams, sew the longest edges of the A/D and B/M units together created in Steps 2-3 to create (1) block quadrant. Press toward the B/M side of the block quadrant. Block quadrants should measure 6 ½" x 6 ½" unfinished.
5. Repeat to create (12) identical block quadrants.

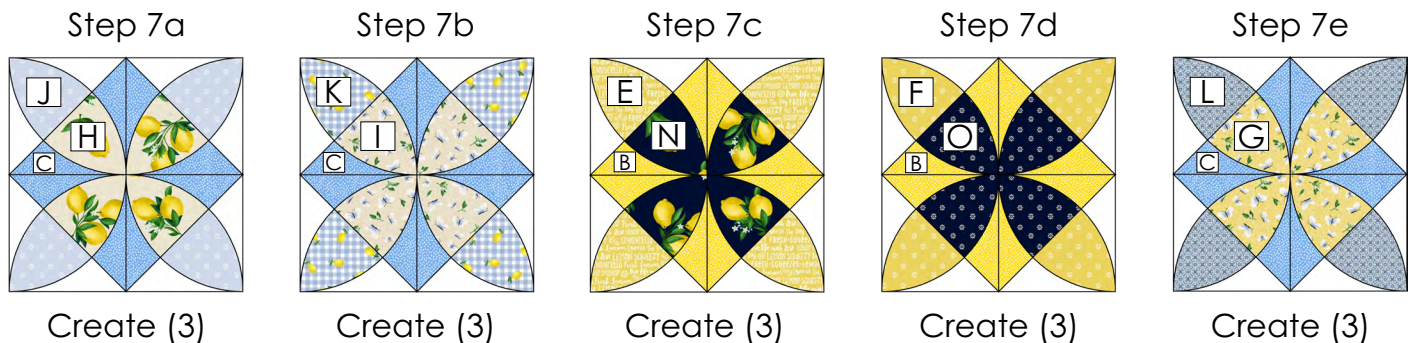


6. Sew (4) block quadrants together, using pins to align the pieces. Fabric B should form a diamond shape in the center of the block. Arrows indicate pressing instructions. Once complete, the block should measure 12 ½" x 12 ½" unfinished.
7. Repeat to create (3) total blocks using Fabrics D and M as the main block prints with Fabric B as accent.

LEMON TREES



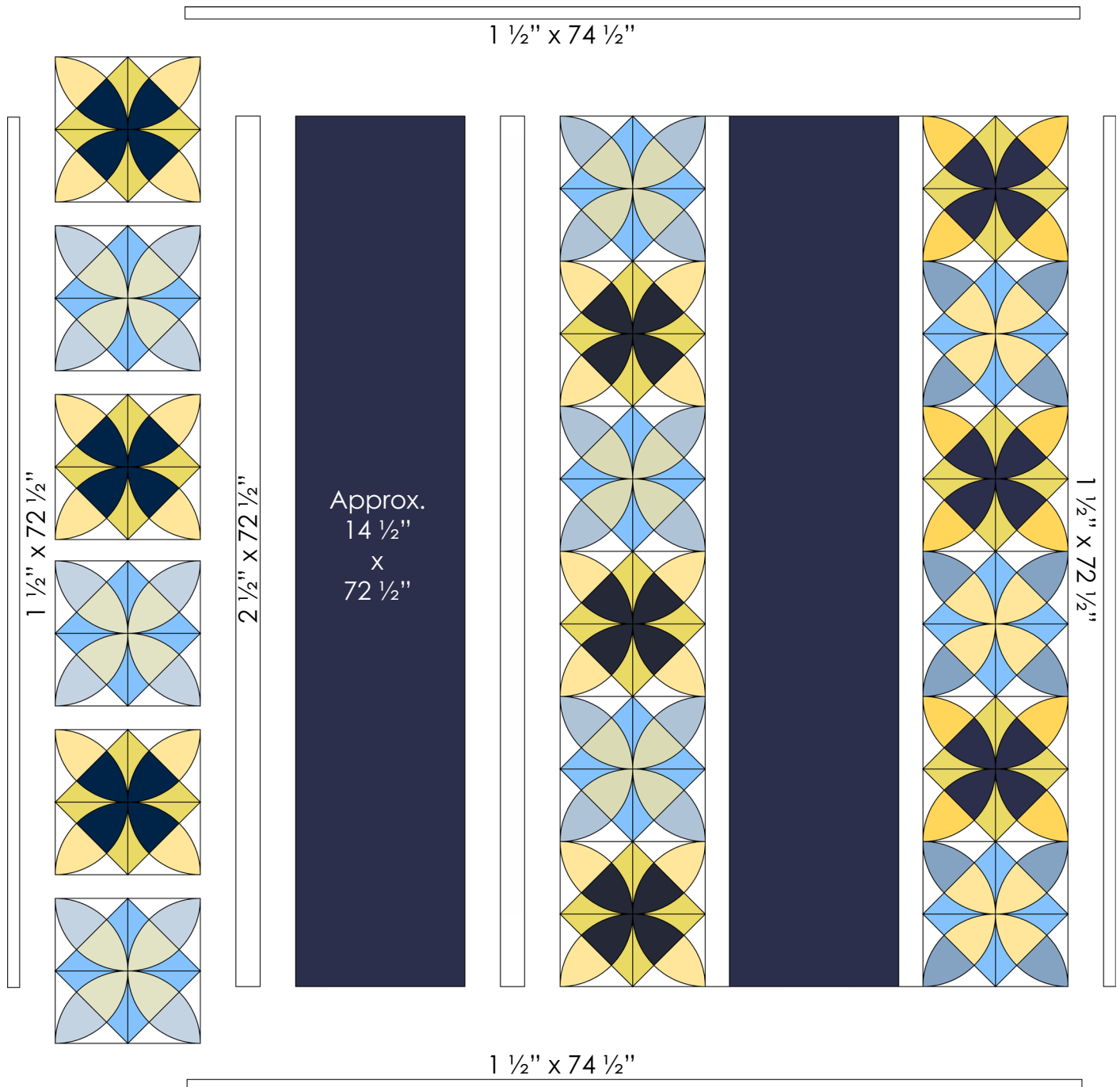
8. Repeat block assembly to create blocks in the following fabric combinations. Create (3) of each combination, to total (18) blocks.
- Fabrics H & J with Fabric C accent.
 - Fabrics I & K with Fabric C accent.
 - Fabrics E & N with Fabric B accent.
 - Fabrics F & O with Fabric B accent.
 - Fabrics G & L with Fabric C accent.



Quilt Assembly:

- Arrange the block colorways in (3) vertical columns. The left most column will feature D/M and H/J blocks. The center column will feature I/K and E/N blocks. The right most column will feature F/O and G/L blocks. Ensure that blocks are turned so that seams will nestle during quilt assembly. Place 2 1/2" x 72 1/2" Fabric A vertical sashing strips and 72 1/2" long Fabric P strips as shown (Fabric P strip width may vary based on fussy cutting).
- Sew the vertical block columns together using pins to align the seams and blocks. Press seams downward, or press open to reduce bulk. If pressing open, backstitch at the beginning and end of each seam. Vertical block columns should measure 12 1/2" x 72 1/2" unfinished.
- Sew vertical block columns, Fabric A strips and Fabric P strips together lengthwise. It is recommended to use pins while assembling long pieces to avoid stretching or shifting. Press away from vertical block columns. Once complete, the quilt top center should measure 72 1/2" x 72 1/2" unfinished.
- Sew (1) 1 1/2" x 72 1/2" Side Border to either side of the quilt top center. Press outward. Then, sew (1) 1 1/2" x 74 1/2" Top/Bottom Border to the top and bottom of the quilt top center. Press outward to complete assembly. The quilt top should measure 74 1/2" x 74 1/2" unfinished.

LEMON TREES

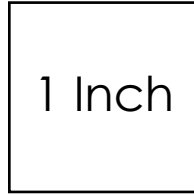


Finishing the Quilt:

13. Sandwich the quilt top with batting and backing. Baste quilt layers together using your preferred method.
14. Quilt as desired.
15. Bind quilt using (8) 2 1/4" x WOF strips.



LEMON TREES TEMPLATES



Print at 100% or Actual Size

Template
B

Template
C

Template A