

michael miller FABRICS

# CLASSIC ALBUMS

SIZE: 60"W x 66"H • LEVEL: INTERMEDIATE • PATTERN BY: NATALIE CRABTREE • HAPPY TIMES FABRIC COLLECTION  
PATTERN AVAILABLE ON: [WWW.MICHAELMILLERFABRICS.COM](http://WWW.MICHAELMILLERFABRICS.COM)



THIS IS A DIGITAL REPRESENTATION OF THE QUILT TOP, FABRIC MAY VARY.

**PLEASE NOTE:** BEFORE BEGINNING YOUR PROJECT, CHECK FOR ANY PATTERN UPDATES AT [MICHAELMILLERFABRICS.COM](http://MICHAELMILLERFABRICS.COM)'S FREE PROJECTS SECTION.

p.212.704.0774 | [info@michaelmillerfabrics.com](mailto:info@michaelmillerfabrics.com) | [www.michaelmillerfabrics.com](http://www.michaelmillerfabrics.com)



# CLASSIC ALBUMS



**FABRIC A**  
CX10891  
Golden Notes Cream  
2 1/2 yards



**FABRIC B**  
CX10887  
Perfect Melody Blue  
1 FQ



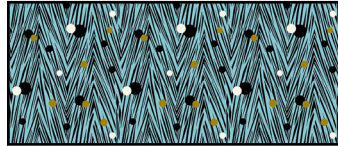
**FABRIC C**  
CX10887  
Perfect Melody Red  
1 FQ



**FABRIC D**  
CX10888  
Vintage Charm Cream  
1 FQ



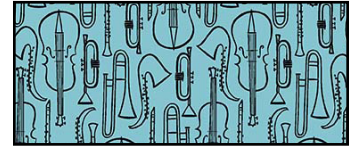
**FABRIC E**  
CX10888  
Vintage Charm Yellow  
1 FQ



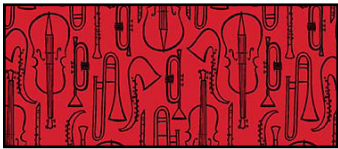
**FABRIC F**  
CX10889  
Harmonious Dots Blue  
1 FQ



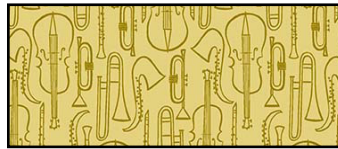
**FABRIC G**  
CX10889  
Harmonious Dots Cream  
1 FQ



**FABRIC H**  
CX10890  
Music Instruments Blue  
1 FQ



**FABRIC I**  
CX10890  
Music Instruments Red  
1 FQ



**FABRIC J**  
CX10890  
Music Instruments Yellow  
1 FQ



**FABRIC K**  
DCX10885  
Fun Rhythm Blue  
1 FQ



**FABRIC L**  
DCX10885  
Fun Rhythm Red  
1 FQ



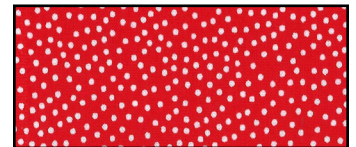
**FABRIC M**  
DCX10886  
Shall We Dance Blue  
1 FQ



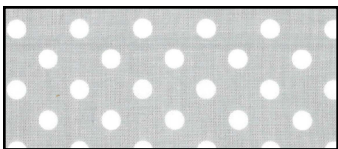
**FABRIC N**  
DCX10886  
Shall We Dance Cream  
1 FQ



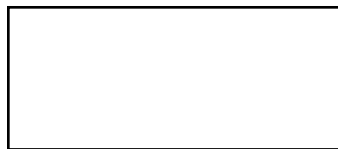
**FABRIC O**  
DCX10886  
Shall We Dance Red  
1 FQ



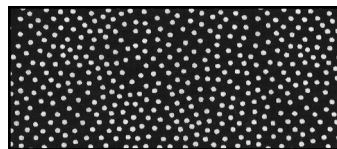
**FABRIC P**  
CX1065  
Garden Pindot Red  
1/4 yard



**FABRIC Q**  
CX2490  
Dumb Dot Nickel  
1/8 yard



**FABRIC R**  
SC\_5333 Bright White  
Cotton Couture  
1/8 yard



**FABRIC S**  
CX1065  
Garden Pindot Black  
1 1/4 yards  
(includes binding)

**BACKING**  
4 yards

**BATTING**  
68" x 74"

WOF = Width of Fabric, RST = Right Sides Together, SNF = Stitch and Flip



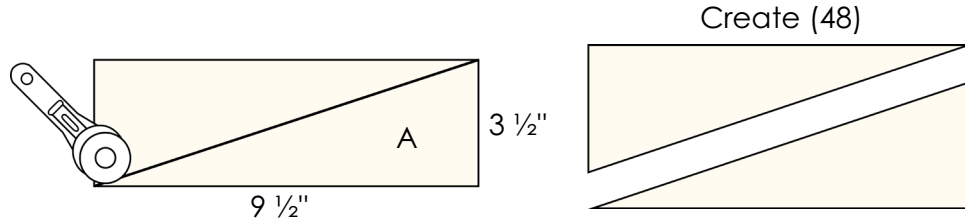
# CLASSIC ALBUMS

KEY	CUTTING INSTRUCTIONS
<b>A</b>	<ul style="list-style-type: none"> <li>• Cut (12) 3 1/2" x WOF strips. Subcut (48) 3 1/2" x 9 1/2" rectangles for Album Blocks.</li> <li>• Cut (2) 3 1/2" x WOF strips. Subcut (20) 3 1/2" squares for Record Blocks.</li> <li>• Cut (7) 2 1/2" x WOF strips. Piece strips for length using diagonal seams. Trim (4) 2 1/2" x 66 1/2" vertical sashing strips for Quilt Assembly.</li> <li>• Cut (2) 1 1/2" x WOF strips. Subcut (6) 1 1/2" x 12 1/2" horizontal sashing strips for Quilt Assembly.</li> <li>• Cut (1) 10 1/2" x WOF strip. Subcut the following for Quilt Assembly:               <ul style="list-style-type: none"> <li>○ (8) 10 1/2" x 2" horizontal sashing strips.</li> <li>○ (20) 10 1/2" x 1 1/4" horizontal sashing strips.</li> </ul> </li> </ul>
<b>B, C, E, G, J, K, L, M, N, O</b>	<ul style="list-style-type: none"> <li>• From each of the fabrics, cut (2) 8 1/4" squares for Album Blocks.</li> </ul>
<b>D, F, H, I</b>	<ul style="list-style-type: none"> <li>• From each of the fabrics, cut (1) 8 1/4" square for Album Blocks.</li> </ul>
<b>P</b>	<ul style="list-style-type: none"> <li>• Cut (4) 1 1/2" x WOF strips. Subcut the following for Record Blocks:               <ul style="list-style-type: none"> <li>○ (10) 1 1/2" x 5 1/2" rectangles.</li> <li>○ (10) 1 1/2" x 3 1/2" rectangles.</li> <li>○ (20) 1 1/2" squares.</li> </ul> </li> </ul>
<b>Q</b>	<ul style="list-style-type: none"> <li>• Cut (2) 1 1/2" x WOF strips. Subcut the following for Record Blocks:               <ul style="list-style-type: none"> <li>○ (10) 1 1/2" x 3 1/2" rectangles.</li> <li>○ (10) 1 1/2" squares.</li> </ul> </li> </ul>
<b>R</b>	<ul style="list-style-type: none"> <li>• Cut (1) 1 1/2" x WOF strip. Subcut (5) 1 1/2" squares for Record Blocks.</li> </ul>
<b>S</b>	<ul style="list-style-type: none"> <li>• Cut (7) 2 1/4" x WOF strips for binding.</li> <li>• Cut (5) 4" x WOF strips. Subcut the following for Record Blocks:               <ul style="list-style-type: none"> <li>○ (10) 4" x 12 1/2" rectangles.</li> <li>○ (10) 4" x 5 1/2" rectangles.</li> </ul> </li> <li>• Cut (1) 1 1/2" x WOF strip. Subcut (20) 1 1/2" squares for Record Blocks.</li> </ul>

# CLASSIC ALBUMS

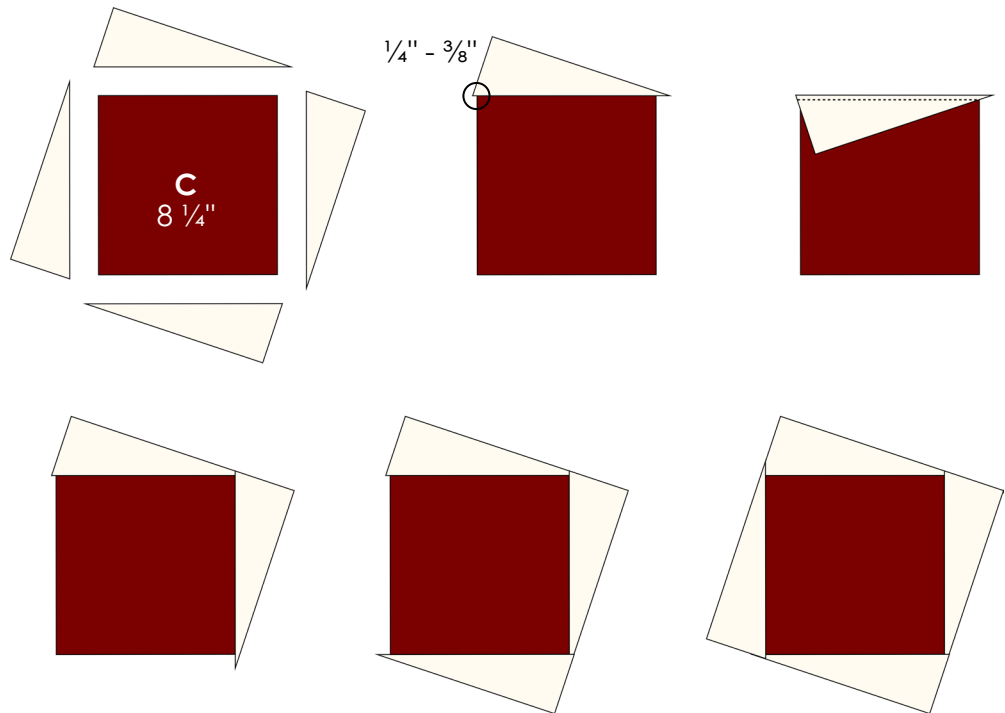
## Album Block Assembly:

- Using the cutting diagram as a guide, cut (24)  $9\frac{1}{2}'' \times 3\frac{1}{2}''$  Fabric A rectangles diagonally from the bottom left corner to the top right corner to create (48) triangles.

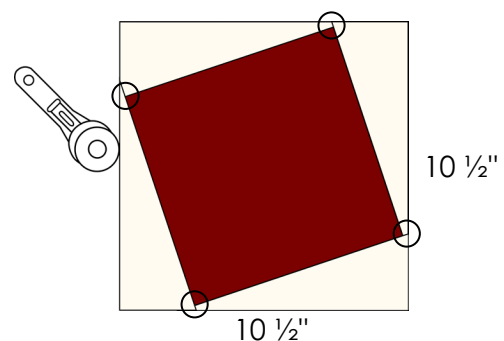


- Arrange (4) Fabric A triangles cut in Step 1 around (1)  $8\frac{1}{4}''$  Fabric C square as shown. Triangles should rotate around the Fabric C square.
- Align (1) Fabric A triangle with the top side of the Fabric C square so that the left corner extends  $\frac{1}{4}'' - \frac{3}{8}''$  past the left side of the Fabric C square. Place the pieces RST.
- Sew the pieces together. Please note that the Fabric A triangle is oversized. There should be excess fabric along the right side of the Fabric C square. Press toward the Fabric A triangle.
- Repeat assembly techniques to attach Fabric A triangles to the remaining sides of the Fabric C square in a clockwise formation.

**\*Place the Fabric A triangles so that the straight edge is located on the outside edge of the block, and the longer diagonal cut edge is facing the Fabric C square on the inside of the block.**

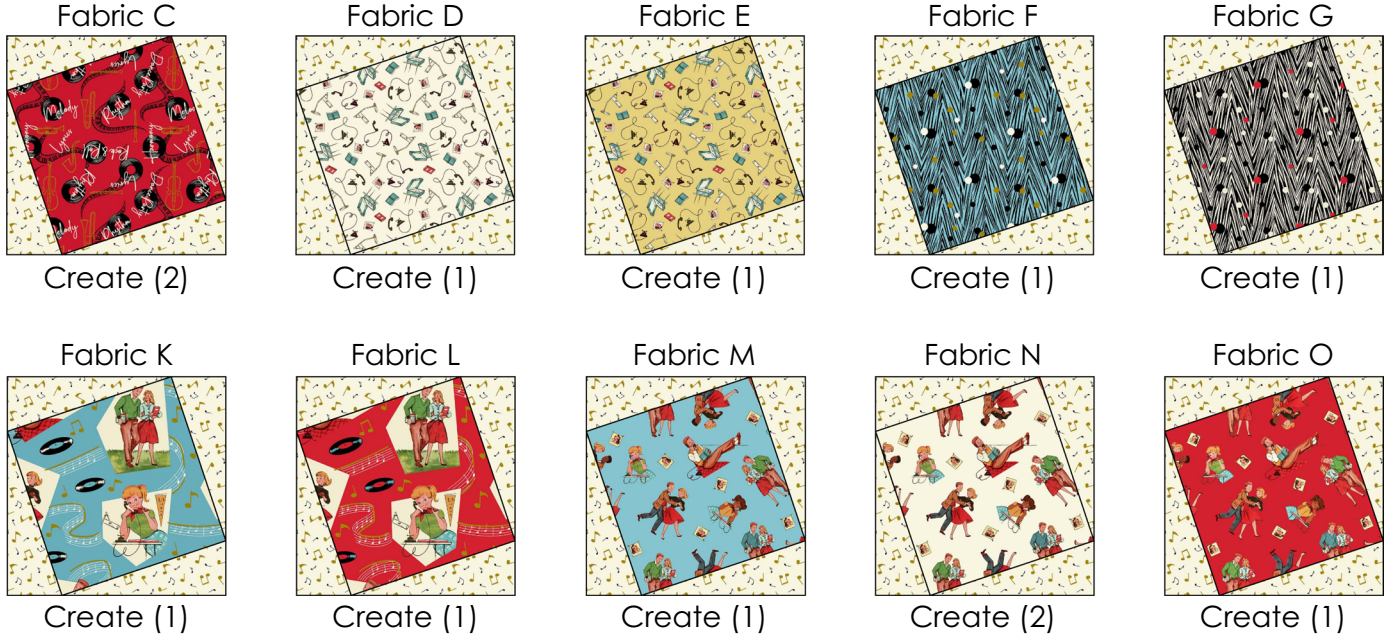


- Carefully trim excess fabric from the block to measure  $10\frac{1}{2}'' \times 10\frac{1}{2}''$  unfinished. When trimming, ensure there is at least  $\frac{1}{4}''$  between the Fabric C square points and the raw edge of the block as indicated with black circles in the diagram. The Fabric C square should 'lean' to the left and 'float' within the block.

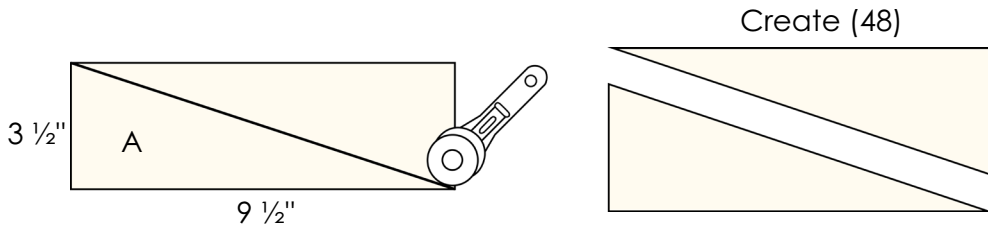


# CLASSIC ALBUMS

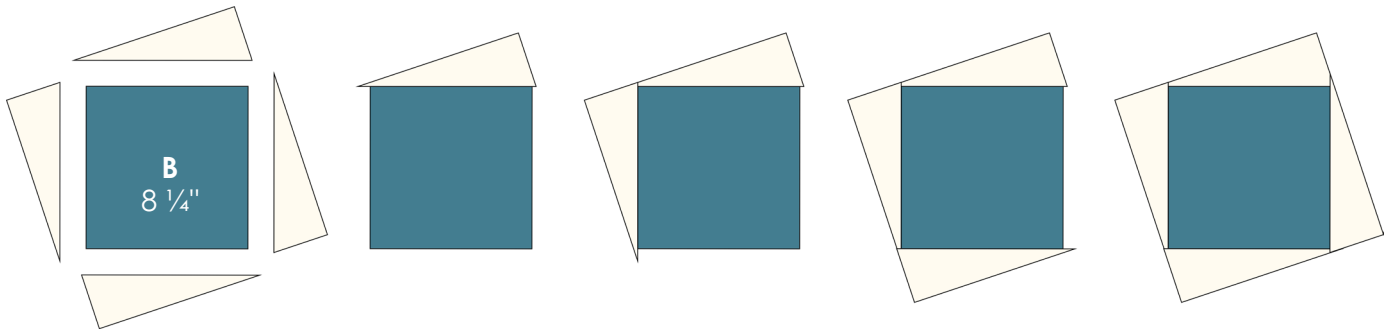
7. Repeat block assembly described in Steps 2-6 to create the left leaning Album Blocks shown below. Diagrams indicate quantity of blocks to create from assorted fabrics. There should be (12) left leaning Album Blocks.



8. Using the cutting diagram as a guide, cut (24) 9 1/2" x 3 1/2" Fabric A rectangles diagonally from the bottom right corner to the top left corner to make (48) triangles.

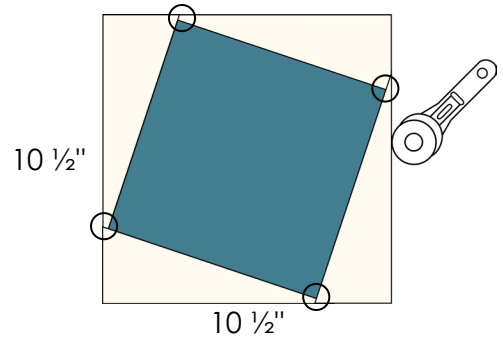


9. Using the same techniques described in Steps 2-5, attach Fabric A triangles to (1) 8 1/4" Fabric B square moving in a counter-clockwise formation beginning with the top side of the Fabric B square. The right corner of the Fabric A triangle should extend a 1/4" - 3/8" past the right side of the Fabric B square. Continue to attach Fabric A triangles to each side.



# CLASSIC ALBUMS

10. Trim the block to measure  $10\frac{1}{2}$ " x  $10\frac{1}{2}$ " unfinished. Reference Step 6 when trimming. The Fabric B square should 'lean' to the right and 'float' within the block.

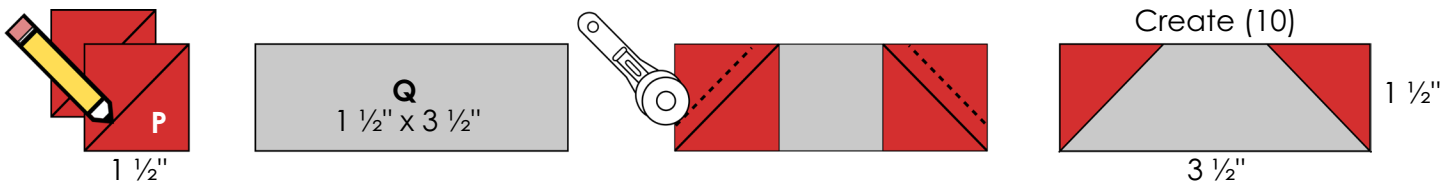


11. Repeat block assembly described in Steps 9-10 to create the right leaning Album Blocks shown below. (Designer Note: Blocks created in Steps 1-7 and Steps 8-10 will be mirror images.) Diagrams indicate quantity of blocks to create from assorted fabrics. There should be (12) right leaning Album Blocks.

<p>Fabric B</p> <p>Create (2)</p>	<p>Fabric E</p> <p>Create (1)</p>	<p>Fabric G</p> <p>Create (1)</p>	<p>Fabric H</p> <p>Create (1)</p>	<p>Fabric I</p> <p>Create (1)</p>
<p>Fabric J</p> <p>Create (2)</p>	<p>Fabric K</p> <p>Create (1)</p>	<p>Fabric L</p> <p>Create (1)</p>	<p>Fabric M</p> <p>Create (1)</p>	<p>Fabric O</p> <p>Create (1)</p>

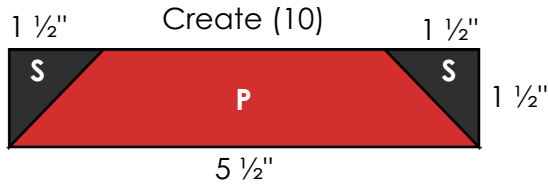
### Record Block Assembly:

12. Draw a diagonal line on the wrong side of (20)  $1\frac{1}{2}$ " Fabric P squares.
13. Place (1)  $1\frac{1}{2}$ " Fabric P square onto either top corner of (10)  $1\frac{1}{2}$ " x  $3\frac{1}{2}$ " Fabric Q rectangles, RST and edges aligned. Note the orientation of the drawn diagonal line on the wrong side of each square.
14. Sew along the drawn diagonal line on the wrong side of each Fabric P square. Then, trim excess corner fabric to a  $\frac{1}{4}$ ". Press toward the corners to complete SNF techniques. SNF units should measure  $1\frac{1}{2}$ " x  $3\frac{1}{2}$ " unfinished.

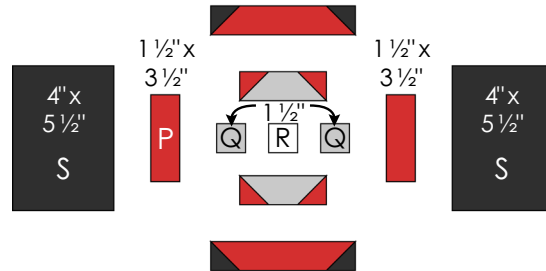


# CLASSIC ALBUMS

15. Draw a diagonal line on the wrong side of (20) 1 1/2" Fabric S squares and (20) 3 1/2" Fabric A squares.
16. Repeat SNF techniques to attach (1) 1 1/2" Fabric S square to either top corner of (10) 1 1/2" x 5 1/2" Fabric P rectangles as shown. SNF units should measure 1 1/2" x 5 1/2" unfinished.
17. Repeat SNF techniques to attach (1) 3 1/2" Fabric A square to either top corner of (10) 4" x 12 1/2" Fabric S rectangles as shown. SNF units should measure 4" x 12 1/2" unfinished.



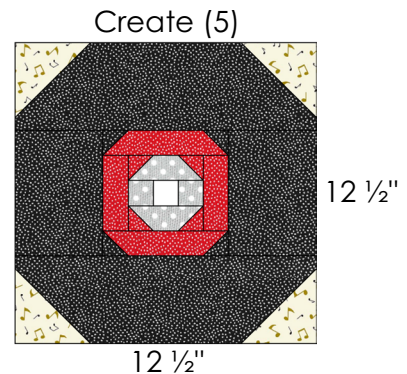
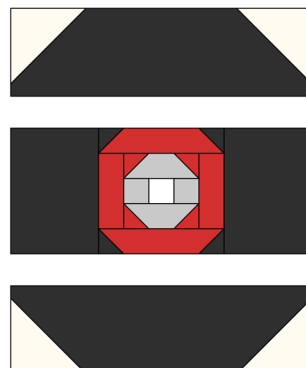
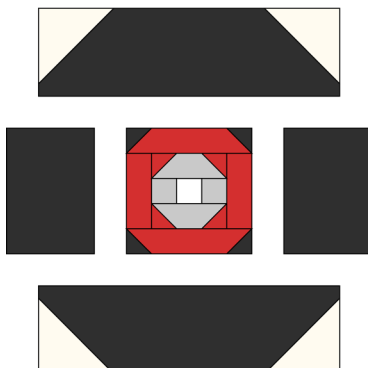
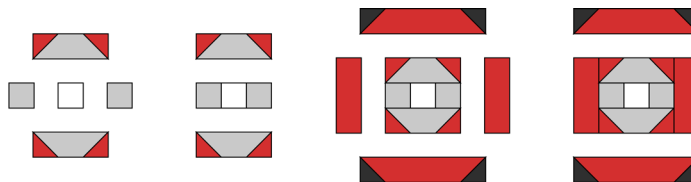
18. Arrange (2) of each type of SNF unit created in Steps 12-17 with assorted squares and rectangles from Fabrics P-S as shown to form a Record Block. Reference diagrams for location and size of assorted pieces.



19. Sew the block together by adding layers onto the center 1 1/2" Fabric R square as shown. Press outward after attaching each layer. Once complete, the Record Block should measure 12 1/2" x 12 1/2" unfinished.



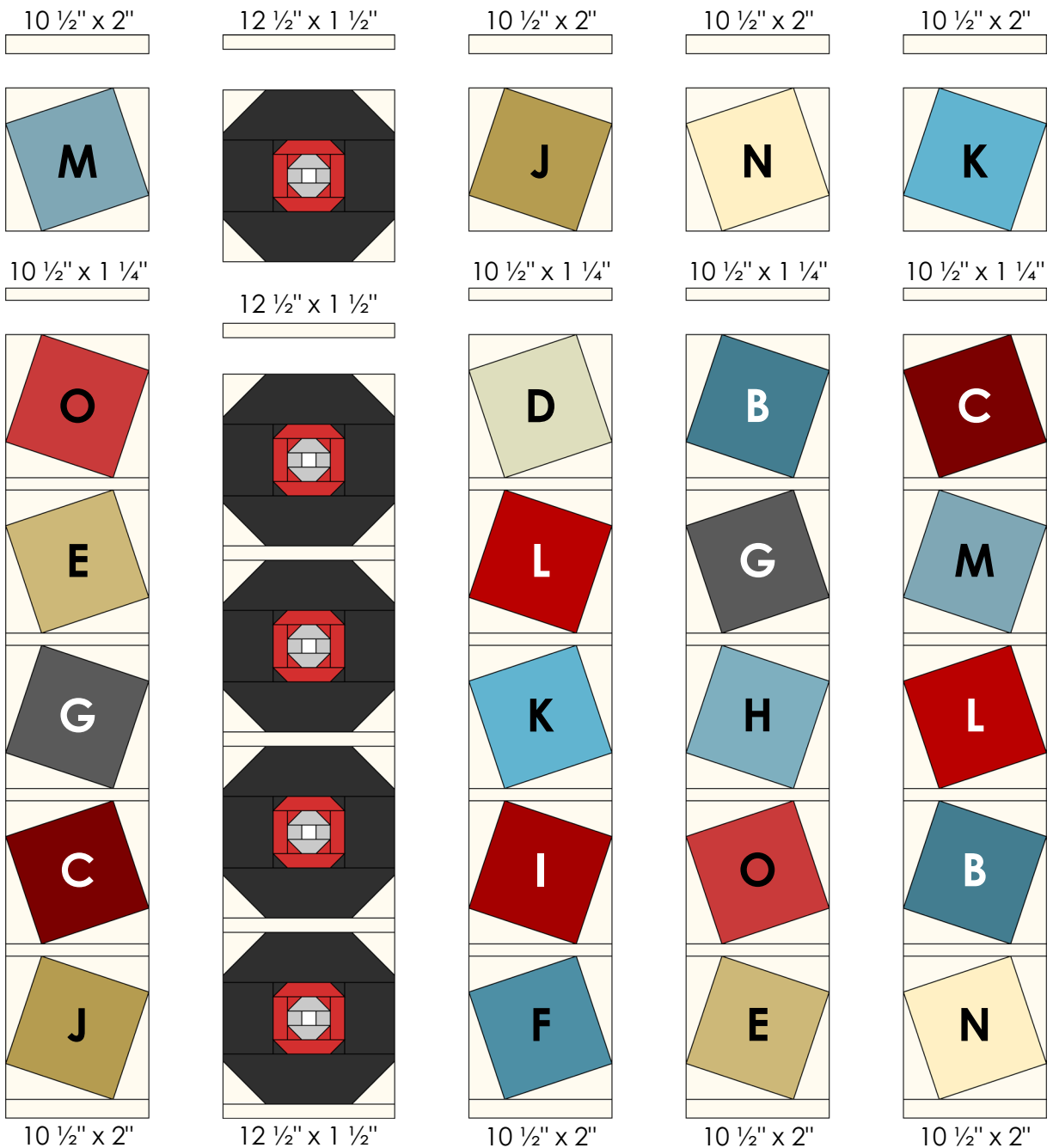
20. Repeat to create (5) Record Blocks.



# CLASSIC ALBUMS

## Quilt Assembly:

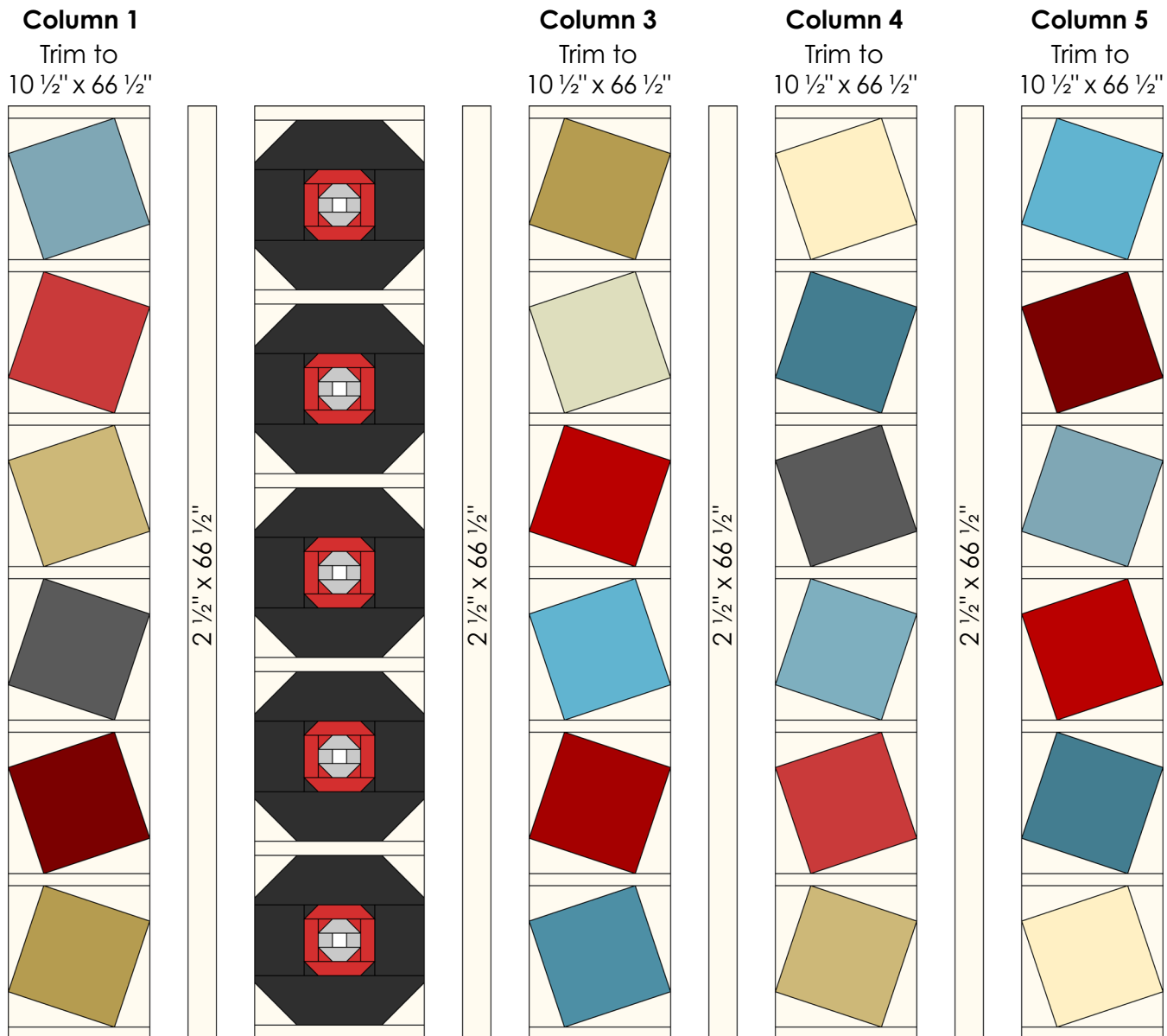
21. Arrange Album and Record Blocks into (5) vertical columns. Album Block fabric placement is labeled in the diagram. Album Blocks will be located in vertical columns 1, 3, 4 and 5. Place (1)  $10\frac{1}{2}'' \times 1\frac{1}{4}''$  Fabric A horizontal sashing strip in between each Album Block. Place (1)  $10\frac{1}{2}'' \times 2''$  Fabric A horizontal sashing strip at the top and bottom of vertical columns 1, 3, 4 and 5. Please note the alternate placement of left leaning and right leaning Album Blocks. In vertical column 2, place (1)  $12\frac{1}{2}'' \times 1\frac{1}{2}''$  Fabric A horizontal sashing strip in between each Record Block and at the top and bottom of the vertical column.
22. Sew the vertical columns together. Press away from blocks. Vertical column 2 (*Record Blocks*) should measure  $12\frac{1}{2}'' \times 66\frac{1}{2}''$  unfinished. Vertical columns 1, 3, 4 and 5 (*Album Blocks*) should measure  $10\frac{1}{2}'' \times 67\frac{1}{4}''$  unfinished.





# CLASSIC ALBUMS

23. Trim vertical columns 1, 3, 4 and 5 to measure  $10\frac{1}{2}'' \times 66\frac{1}{2}''$  unfinished, trimming evenly from the top and bottom of each column.
24. Sew vertical columns together, placing (1)  $2\frac{1}{2}'' \times 66\frac{1}{2}''$  Fabric A vertical sashing strip in between each column. It is recommended to use pins to align the vertical columns with the vertical sashing strips for accuracy. Press toward the vertical sashing strips. Once complete, the quilt top should measure  $60\frac{1}{2}'' \times 66\frac{1}{2}''$  unfinished.



## Finishing the Quilt:

25. Sandwich the quilt top with batting and backing. Baste quilt layers together using your preferred method.
26. Quilt as desired.
27. Bind quilt using (7)  $2\frac{1}{4}'' \times \text{WOF}$  Fabric S strips.