

michael miller FABRICS

ANIMAL TRACKS

SIZE: 88"W x 88"H • LEVEL: INTERMEDIATE • PATTERN BY: NATALIE CRABTREE • WELCOME TO THE CABIN COLLECTION
PATTERN AVAILABLE ON: WWW.MICHAELMILLERFABRICS.COM



THIS IS A DIGITAL REPRESENTATION OF THE QUILT TOP, FABRIC MAY VARY.

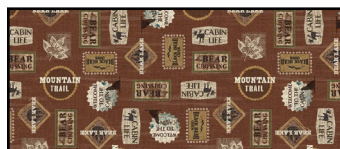
PLEASE NOTE: BEFORE BEGINNING YOUR PROJECT, CHECK FOR ANY PATTERN UPDATES AT MICHAELMILLERFABRICS.COM'S FREE PROJECTS SECTION.

p.212.704.0774 | info@michaelmillerfabrics.com | www.michaelmillerfabrics.com

ANIMAL TRACKS



FABRIC A
CX10728
Trail Signs Green
 $\frac{3}{8}$ yard



FABRIC B
CX10728
Trail Signs Rust
 $\frac{5}{8}$ yard



FABRIC C
CX10729
Zigzag Blanket Green
2 $\frac{1}{4}$ yards



FABRIC D
CX10732
Cozy Plaid Blue
 $\frac{1}{2}$ yard



FABRIC E
CX10732
Cozy Plaid Charcoal
 $\frac{3}{8}$ yard



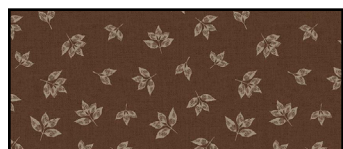
FABRIC F
CX10732
Cozy Plaid Green
 $\frac{5}{8}$ yard



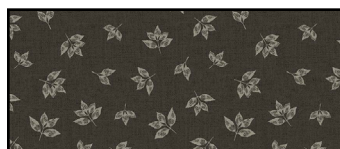
FABRIC G
CX10732
Cozy Plaid Rust
 $\frac{5}{8}$ yard



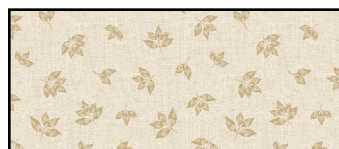
FABRIC H
CX10733
Crispy Leaves Gold
 $\frac{3}{8}$ yard



FABRIC I
CX10733
Crispy Leaves Brown
 $\frac{1}{2}$ yard



FABRIC J
CX10733
Crispy Leaves Charcoal
1 yard (includes binding)



FABRIC K
CX10733
Crispy Leaves Cream
3 $\frac{1}{2}$ yards



FABRIC L
CX10733
Crispy Leaves Green
 $\frac{1}{2}$ yard



FABRIC M
DCX10726
Cabin Life Patch Multi
 $\frac{5}{8}$ yard



FABRIC N
DCX10727
Wild Pictures Brown
 $\frac{5}{8}$ yard

BACKING
8 yards
BATTING
96" x 96"

WOF = Width of Fabric, HST = Half Square Triangle, QST = Quarter Square Triangle, RST = Right Sides Together, SNF = Stitch and Flip



ANIMAL TRACKS

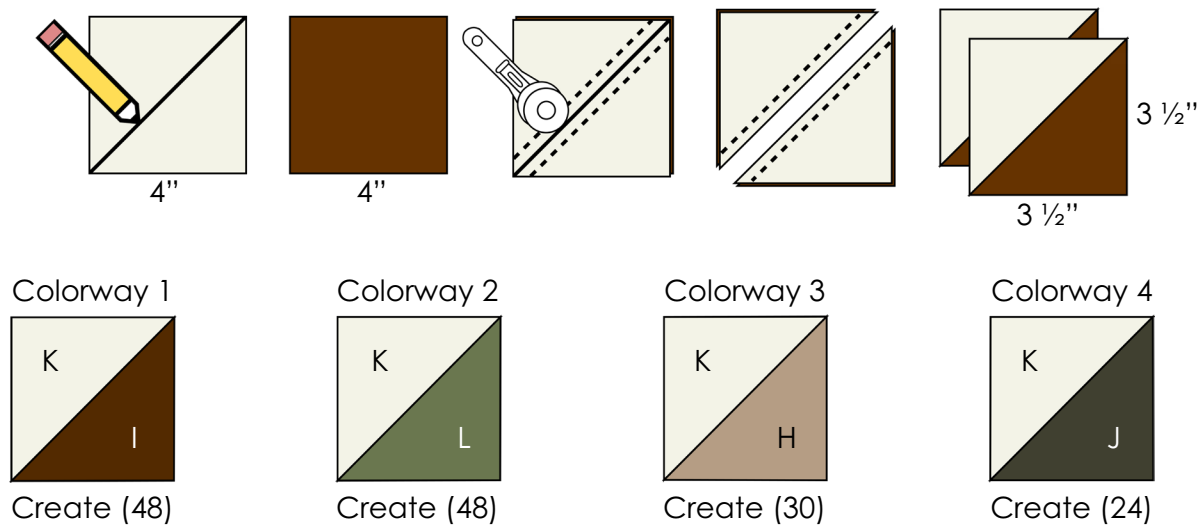
KEY	CUTTING INSTRUCTIONS
A	<ul style="list-style-type: none"> • Cut (1) 8 ½" x WOF strip. Subcut (4) 8 ½" squares for Block Assembly.
B	<ul style="list-style-type: none"> • Cut (2) 8 ½" x WOF strips. Subcut (8) 8 ½" squares for Block Assembly.
C	<ul style="list-style-type: none"> • Cut (10) 2" x WOF strips. Piece strips for length using diagonal seams. Set the long strip aside for Quilt Assembly. Borders will be trimmed after the quilt top center is complete. • Cut (1) 11" x WOF strip. Subcut (2) 11" squares. Cut (1) square once diagonally from the bottom left corner to the top right corner to make (2) HST. Cut the remaining square once diagonally from the bottom right corner to the top left corner to make (2) HST, totaling (4) HST. Set the HST aside for Quilt Assembly. • Cut (2) 21" x WOF strips. Subcut (3) 21" squares; cut each square twice diagonally to make (12) QST for Quilt Assembly (<i>Cut (2) squares from the first WOF strip.</i>)
D	<ul style="list-style-type: none"> • Cut (5) 2 ½" x WOF strips. Subcut the following for Block Assembly: <ul style="list-style-type: none"> ◦ (5) 2 ½" x 15 ½" rectangles. ◦ (5) 2 ½" x 13 ½" rectangles.
E	<ul style="list-style-type: none"> • Cut (4) 2 ½" x WOF strips. Subcut the following for Block Assembly: <ul style="list-style-type: none"> ◦ (4) 2 ½" x 15 ½" rectangles. ◦ (4) 2 ½" x 13 ½" rectangles.
F	<ul style="list-style-type: none"> • Cut (7) 2 ½" x WOF strips. Subcut the following for Block Assembly: <ul style="list-style-type: none"> ◦ (8) 2 ½" x 15 ½" rectangles. ◦ (8) 2 ½" x 13 ½" rectangles.
G	<ul style="list-style-type: none"> • Cut (7) 2 ½" x WOF strips. Subcut the following for Block Assembly: <ul style="list-style-type: none"> ◦ (8) 2 ½" x 15 ½" rectangles. ◦ (8) 2 ½" x 13 ½" rectangles.
H	<ul style="list-style-type: none"> • Cut (2) 4" x WOF strips. Subcut (15) 4" squares for Block Assembly.
I	<ul style="list-style-type: none"> • Cut (3) 4" x WOF strips. Subcut (24) 4" squares for Block Assembly.
J	<ul style="list-style-type: none"> • Cut (10) 2 ¼" x WOF strips for binding. • Cut (2) 4" x WOF strips. Subcut (12) 4" squares for Block Assembly.
K	<ul style="list-style-type: none"> • Cut (8) 4" x WOF strips. Subcut (75) 4" squares for Block Assembly. • Cut (3) 3 ½" x WOF strips. Subcut (25) 3 ½" squares for Block Assembly. • Cut (4) 2 ½" x WOF strips. Subcut (50) 2 ½" squares for Block Assembly. • Cut (44) 1 ½" x WOF strips. Subcut the following: <ul style="list-style-type: none"> ◦ (25) 1 ½" x 8 ½" rectangles for Block Assembly. ◦ (25) 1 ½" x 9 ½" rectangles for Block Assembly. ◦ (25) 1 ½" x 12 ½" rectangles for Block Assembly. ◦ (25) 1 ½" x 13 ½" rectangles for Block Assembly. ◦ (12) 1 ½" x 17 ½" rectangles for Quilt Assembly. ◦ (16) 1 ½" x 18 ½" rectangles for Quilt Assembly.
L	<ul style="list-style-type: none"> • Cut (3) 4" x WOF strips. Subcut (24) 4" squares for Block Assembly.
M	<ul style="list-style-type: none"> • Cut (8) 8 ½" squares on point for Block Assembly. Squares should be cut on point to preserve directional prints for a diagonal set quilt.
N	<ul style="list-style-type: none"> • Cut (2) 8 ½" x WOF strips. Subcut (5) 8 ½" squares for Block Assembly.

ANIMAL TRACKS

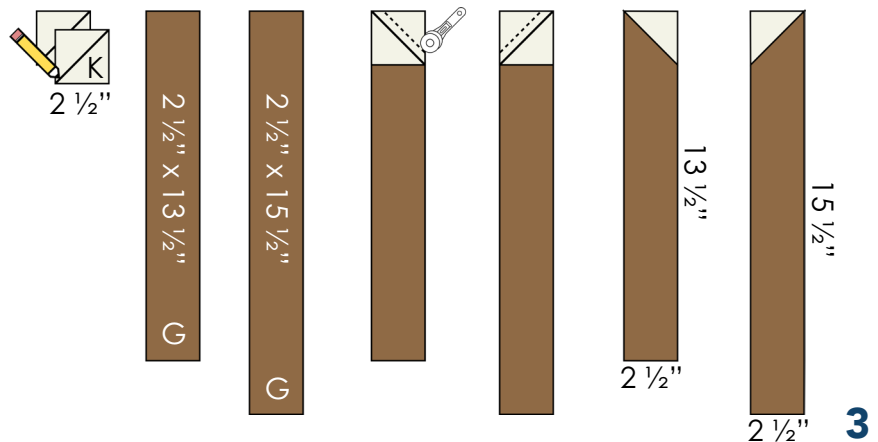
BLOCK ASSEMBLY

(Designer Note: Blocks are created in (4) colorways. Reference diagrams for assistance in identifying Colorways 1-4.)

1. Draw a diagonal line on the wrong side of (75) 4" Fabric K squares.
2. Place (1) Fabric K square with each of (15) 4" Fabric H squares, (24) 4" Fabric I squares, (12) 4" Fabric J squares and (24) 4" Fabric L squares, RST and edges aligned.
3. Sew a $\frac{1}{4}$ " away from either side of the drawn diagonal line on each set of squares. Then, cut along the drawn diagonal line on each set of squares creating HST units. Trim HST units to measure $3\frac{1}{2}$ " x $3\frac{1}{2}$ " unfinished.
4. Reference the diagrams for Block Colorways and quantity of HST units created for each fabric combination.



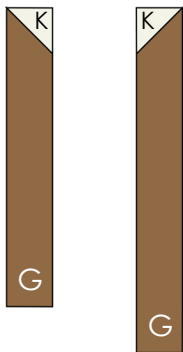
5. Draw a diagonal line on the wrong side of (50) $2\frac{1}{2}$ " Fabric K squares.
6. Place (1) Fabric K square onto the top right corner of (8) $2\frac{1}{2}$ " x $13\frac{1}{2}$ " Fabric G rectangles, RST and edges aligned. Note the orientation of the drawn diagonal line on the wrong side of the Fabric K square.
7. Sew along the drawn diagonal line on each square/rectangle combination. Then, trim excess corner fabric from the top right corner to a $\frac{1}{4}$ ". Press toward the corners to complete (8) SNF units for Block Colorway 1. SNF units should measure $2\frac{1}{2}$ " x $13\frac{1}{2}$ " unfinished.
8. Repeat SNF techniques to attach (1) $2\frac{1}{2}$ " Fabric K square to the top left corner of (8) $2\frac{1}{2}$ " x $15\frac{1}{2}$ " Fabric G rectangles as shown. SNF units should measure $2\frac{1}{2}$ " x $15\frac{1}{2}$ " unfinished.
9. Set SNF units using Fabrics G and K aside for Block Colorway 1.



ANIMAL TRACKS

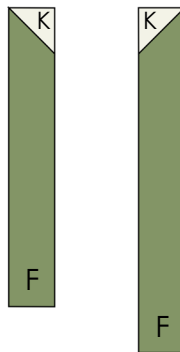
10. Repeat SNF techniques to create SNF units for Block Colorways 2-4. Reference the diagrams for Block Colorways and quantity of SNF units created for each fabric combination.

Colorway 1



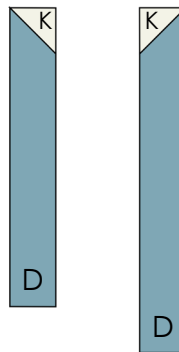
Create (8)
of each

Colorway 2



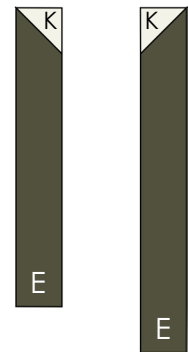
Create (8)
of each

Colorway 3



Create (5)
of each

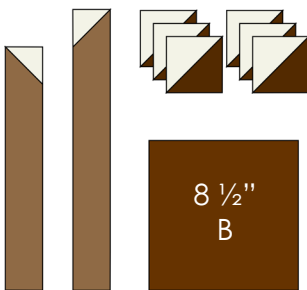
Colorway 4



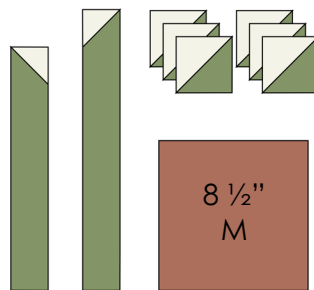
Create (4)
of each

11. Divide the HST units and SNF units by block colorway. Also, place 8 ½" Fabric B squares with Block Colorway 1, 8 ½" Fabric M squares with Block Colorway 2, 8 ½" Fabric N squares with Block Colorway 3 and 8 ½" Fabric A squares with Block Colorway 4. Reference diagrams for fabric combinations for Block Colorways 1-4.

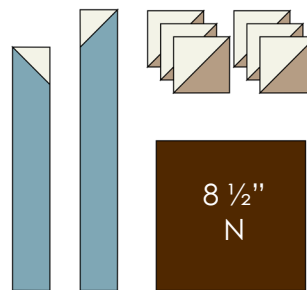
Colorway 1



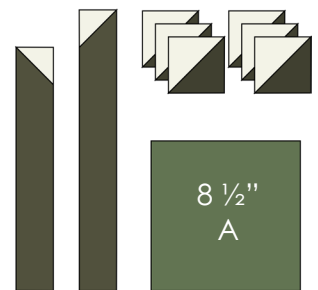
Colorway 2



Colorway 3



Colorway 4

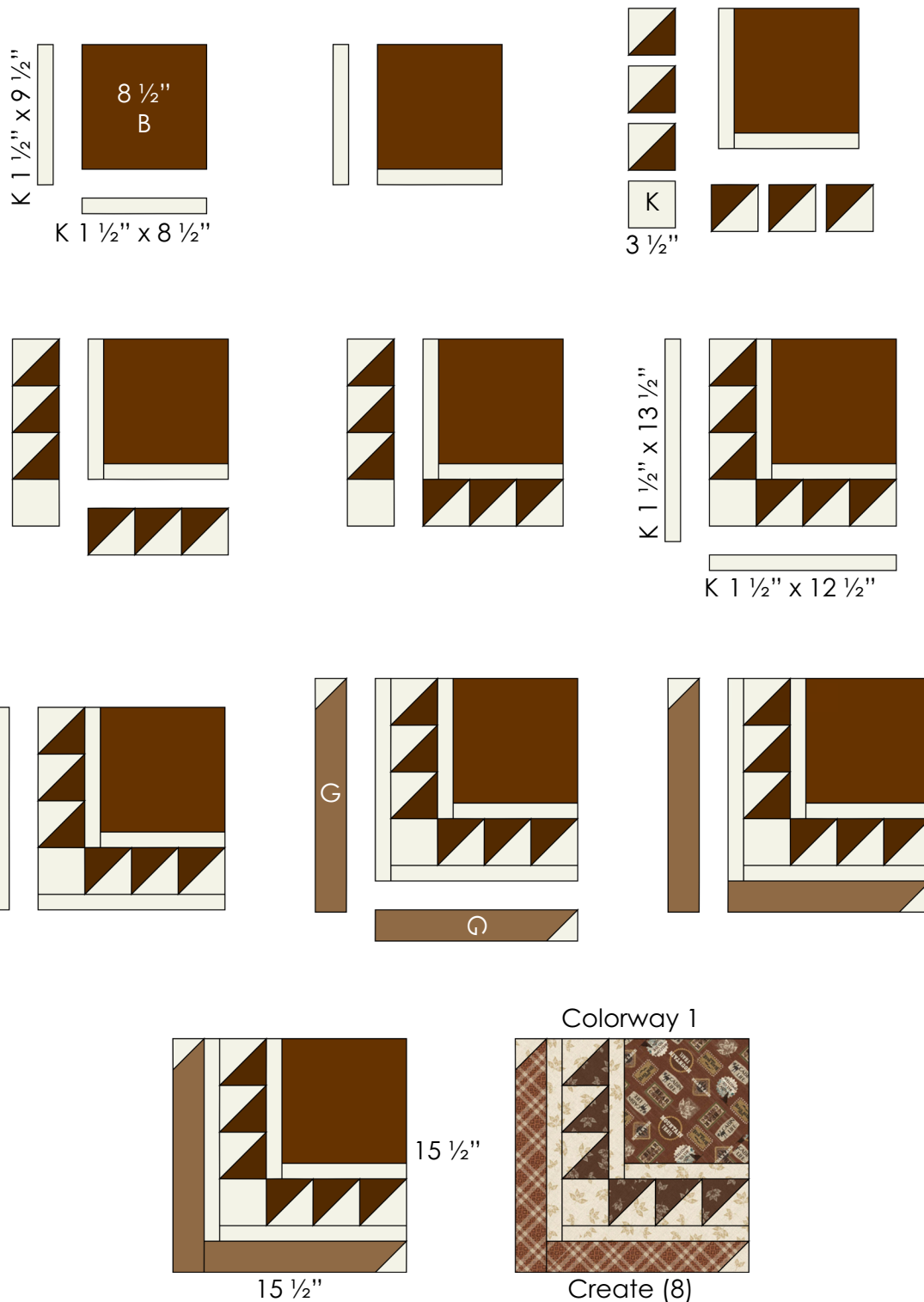


12. Begin sewing Block Colorway 1. Arrange (1) 8 ½" Fabric B square, (6) HST units, (1) of each SNF unit, (1) 3 ½" Fabric K square, and assorted Fabric K rectangles as shown. Reference the diagram on Page 5 for the size and placement of each Fabric K rectangle.

13. Sew Block Colorway 1 together, pressing away from the HST and SNF units. Once complete, Block Colorway 1 should measure 15 ½" x 15 ½" unfinished.

14. Repeat to create (8) Block Colorway 1.

ANIMAL TRACKS



15. Repeat block assembly to create (8) Block Colorway 2, (5) Block Colorway 3 and (4) Block Colorway 4. (Designer Note: Blocks will be set on point during Quilt Assembly. If using directional prints, reference the quilt assembly diagrams before piecing to ensure prints will be oriented properly within the quilt.) There should be a total of (25) blocks.

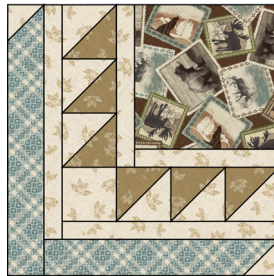
ANIMAL TRACKS

Colorway 2



Create (8)

Colorway 3



Create (5)

Colorway 4

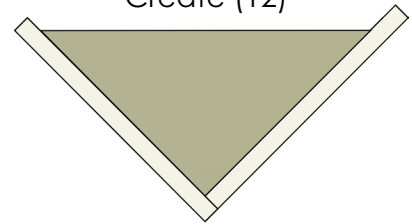
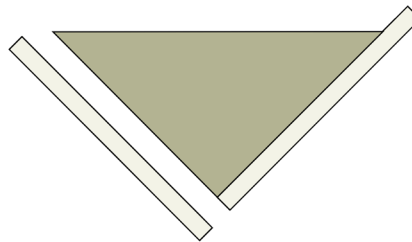
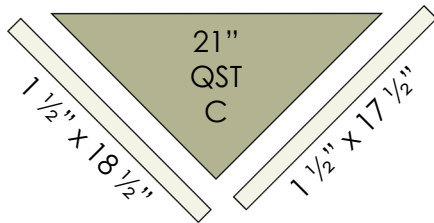


Create (4)

SIDE SETTING AND CORNER SETTING UNIT ASSEMBLY:

16. Create side setting units by sewing (1) $1\frac{1}{2}$ " x $17\frac{1}{2}$ " Fabric K strip to the right short side of (12) 21" Fabric C QST as shown. Press outward. Then, sew (1) $1\frac{1}{2}$ " x $18\frac{1}{2}$ " Fabric K strip to the other short side of each Fabric C QST. The longest edge of each Fabric C QST should be unsewn. There will be excess fabric at either top corner of each side setting unit. Leave units untrimmed. Set aside for Quilt Assembly.

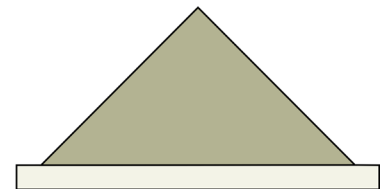
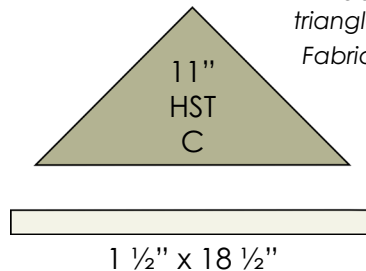
Create (12)



17. Create corner setting units by sewing (1) $1\frac{1}{2}$ " x $18\frac{1}{2}$ " Fabric K strip to the longest edge of (4) 11" Fabric C HST as shown. Press outward. The (2) short sides of the Fabric C HST should be unsewn. There will be excess fabric at either end of each corner setting unit. Leave units untrimmed. Set aside for Quilt Assembly.

Center the
Fabric C
triangle on the
Fabric K strip.

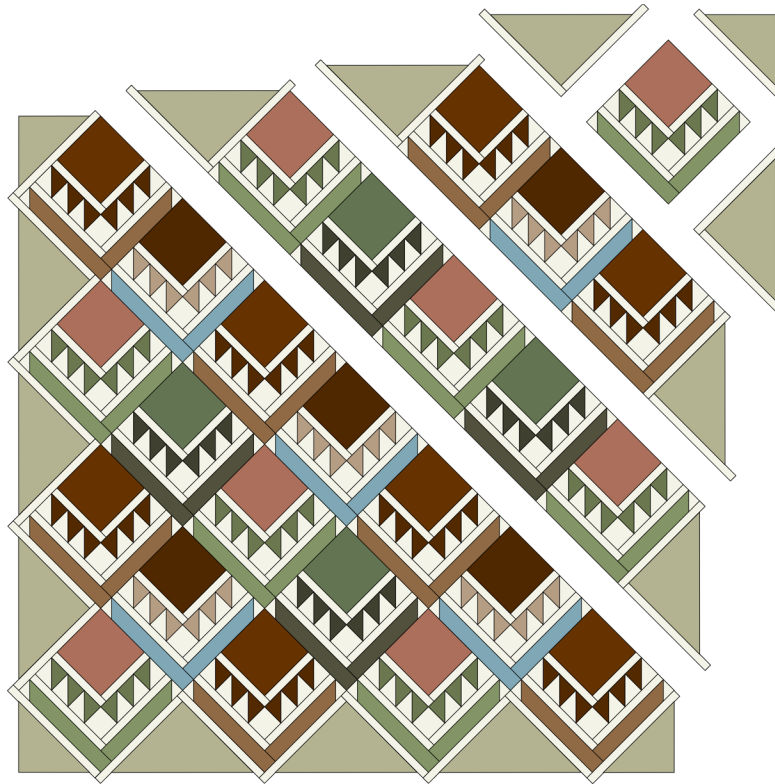
Create (4)



QUILT ASSEMBLY

18. Arrange blocks in a 4 x 4 diagonal grid as shown. Note the placement of Block Colorways 1-4. Ensure all blocks are oriented correctly before proceeding.
19. Place side setting units along the sides of the quilt, and place corner setting units at the (4) corners of the quilt top. **It is possible to maintain directional prints depending on the placement of side and corner setting units.** Note that excess fabric from the Fabric K strips will be present along the outer edges of the quilt top center before assembly and after the quilt top center is complete.
20. Sew the quilt top center together in diagonal rows first, alternating the direction in which you press the seams in each row. **Take great care to perfectly center the corner setting units onto the outermost corner blocks.** Then, sew diagonal rows together to complete the quilt top center. Press.

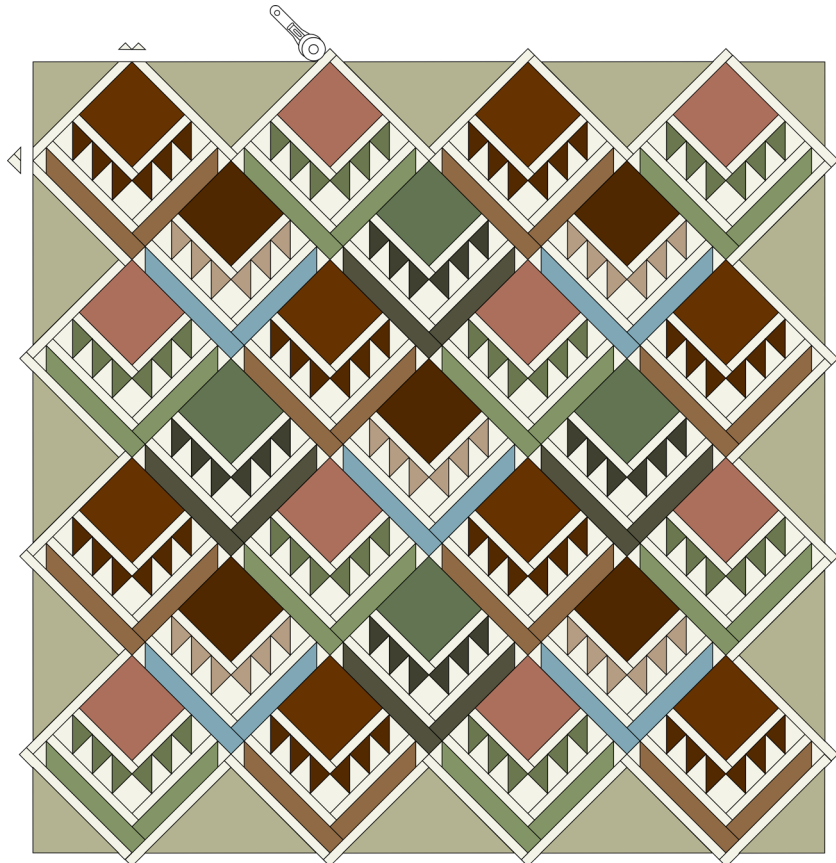
ANIMAL TRACKS



21. Trim excess fabric from the outer edges of the quilt top center. There should be a $\frac{1}{4}$ " seam allowance between the blocks and the raw edges of the quilt top center. ***See additional trimming notes next to the diagram below.**

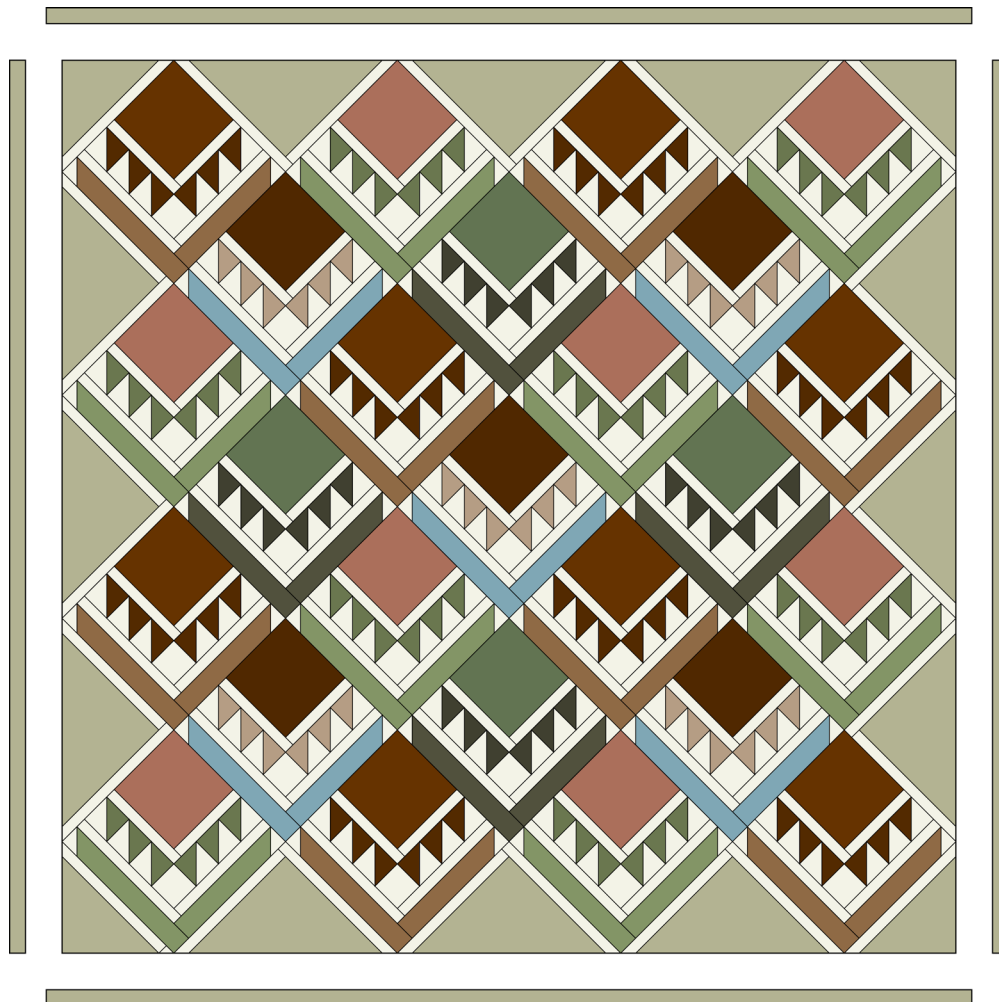
**It is recommended to begin trimming the quilt top center starting with the corners first to achieve perfectly square corners. Trim excess fabric so that there is a $\frac{1}{4}$ " seam allowance between the blocks and the raw edges of the quilt top center.*

Corner and Side Setting Units have been slightly oversized to allow for variances in assembly. Trim the corners of the quilt top center first. Then proceed to trim the side setting units using the corner setting units as a guide.



ANIMAL TRACKS

22. Once the quilt top center is trimmed, measure the height of the quilt top center along the sides and through the center. Average the measurements. Trim (2) 2" wide Fabric C Side Borders using the quilt's actual measurements.
23. Attach the trimmed 2" wide Fabric C Side Borders. Press outward.
24. Once the Side Borders are attached, measure the width of the quilt top center along the top, bottom and through the center. Average the measurements. Trim (2) 2" wide Fabric C Top/Bottom Borders using the quilt's actual measurements.
25. Attach the trimmed 2" wide Fabric C Top/Bottom Borders. Press outward to complete assembly. The quilt top should measure approximately 88 ½" x 88 ½" unfinished.



FINISHING THE QUILT

26. Sandwich the quilt top with batting and backing. Baste quilt layers together using your preferred method.
27. Quilt as desired.
28. Bind quilt using (10) 2 ¼" x WOF Fabric J strips.