

WINTER WEAR QUILT

SIZE: 71" W X 71" H | LEVEL: BEGINNER | PATTERN BY: NATALIE CRABTREE



*THIS IS A DIGITAL REPRESENTATION OF THE QUILT TOP. FABRIC MAY VARY.

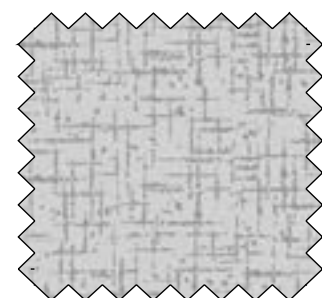
FREE PATTERN AVAILABLE AT WWW.MICHAELMILLERFABRICS.COM

FABRIC REQUIREMENTS FOR 1 KIT:

SKU	YARDAGE PER QUILT	# OF BOLTS FOR 12 KITS
SC5333-BRIGHT WHITE	3 1/4 YARDS	4 BOLTS (39 YARDS)
CX10944-GRAY	1 FAT QUARTER	1 BOLT (3 YARDS)
CX10948-DENIM	1/4 YARD	1 BOLT (3 YARDS)
CX10946-DUSK*	7/8 YARD	1 BOLT (10 1/2 YARDS)
CX10946-SEA	1 FAT EIGHTH	1 BOLT (2 YARDS)
CX10943-CREAM	1 FAT QUARTER	1 BOLT (3 YARDS)
CX10948-DUSK	3/8 YARD	1 BOLT (4 1/2 YARDS)
CX10943-LINEN	1 FAT QUARTER	1 BOLT (3 YARDS)
CX10948-RED	3/8 YARD	1 BOLT (4 1/2 YARDS)
CX10942-CREAM	1 FAT QUARTER	1 BOLT (3 YARDS)
CX10946-DENIM	1 FAT EIGHTH	1 BOLT (2 YARDS)
CX10947-BLACK	1 FAT EIGHTH	1 BOLT (2 YARDS)
CX10946-LINEN	1/2 YARD	1 BOLT (6 YARDS)
CX10944-CREAM	1 FAT QUARTER	1 BOLT (3 YARDS)
CX10942-DUSK	1 FAT QUARTER	1 BOLT (3 YARDS)
CX10943-BLACK	1 FAT QUARTER	1 BOLT (3 YARDS)
CX10945-MULTI	1 3/8 YARDS	2 BOLTS (16 1/2 YARDS)
CX10946-DENIM**	4 1/2 YARDS	4 BOLTS (54 YARDS)

TOTAL # OF BOLTS:
25 BOLTS (21 W/O BACKING)

*INCLUDES BINDING
 **BACKING



WIDE BACK

108 INCH WIDE BACK COTTON

PAIR OUR WIDE BACK
WBX9169-GRAY SISAL
 WITH THIS PROJECT! USE
2 1/2 YARDS FOR BACKING

*IMAGE SHOWN NOT TRUE TO SCALE