

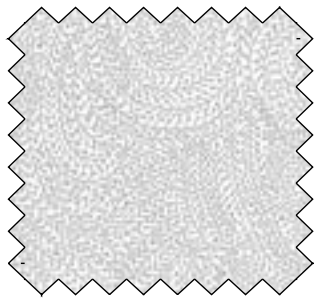


*THIS IS A DIGITAL REPRESENTATION OF THE QUILT TOP. FABRIC MAY VARY.

COMMERCIAL PATTERN AVAILABLE AT WWW.FABRICADDICT.NET OR CHECKER DISTRIBUTORS

FABRIC REQUIREMENTS FOR 1 KIT:		
SKU	YARDAGE PER QUILT	# OF BOLTS FOR 12 KITS
CX11005-MULTI	1 PANEL (2/3 YARD)	1 BOLT (8 YARDS)
CX11008-TEAL	3/8 YARD	1 BOLT (4 1/2 YARD)
CX11014-CREAM	1 1/2 YARDS	2 BOLTS (18 YARDS)
CX11014-YELLOW	1 1/2 YARDS	2 BOLTS (18 YARDS)
CX11014-BLACK*	1 3/8 YARDS	2 BOLTS (16 1/2 YARDS)
CX11007-BLACK	1 1/8 YARDS	1 BOLT (13 1/2 YARDS)
CX11014-TEAL	1 YARD	1 BOLT (12 YARDS)
SC5333-EVERGREEN	1/4 YARD	1 BOLT (3 YARDS)
CX11009-CREAM	4 1/8 YARDS	4 BOLTS (49 1/2 YARDS)

TOTAL # OF BOLTS: 15 BOLTS (11 W/O BACKING)
*INCLUDES BINDING
**BACKING



WIDE BACK
108 INCH WIDE BACK COTTON

PAIR OUR WIDE BACK
WBX6774-GRAY VINE MAZE
WITH THIS PROJECT! USE
2 1/2 YARDS FOR BACKING
*IMAGE SHOWN NOT TRUE TO SCALE

michael miller FABRICS

118 WEST 22ND STREET | 5TH FLOOR | NEW YORK CITY, NY 10011 | 212.704.0774
MICHAELMILLERFABRICS.COM | INFO@MICHAELMILLERFABRICS.COM