

IN THE LEAFY TREETOPS QUILT

SIZE: 69”W X 76”H | LEVEL: EASY | PATTERN BY: THE FABRIC ADDICT



\*THIS IS A DIGITAL REPRESENTATION OF THE QUILT TOP. FABRIC MAY VARY.

COMMERCIAL PATTERN AVAILABLE AT [WWW.FABRICADDICT.NET](http://WWW.FABRICADDICT.NET) & CHECKER DISTRIBUTORS

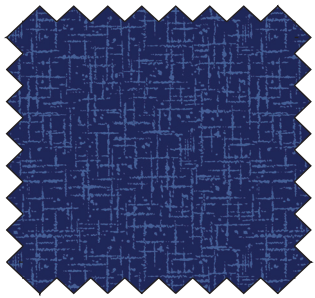
FABRIC REQUIREMENTS FOR 1 KIT:

SKU	YARDAGE PER QUILT	# OF BOLTS FOR 12 KITS
CX10830-LIME	PANEL (1 YARD)	1 BOLT (12 YARDS)
CX10837-BLACK	1/4 YARD	1 BOLT (3 YARDS)
CX10838-GREEN	1/2 YARD	1 BOLT (6 YARDS)
CX10835-AQUA	1 YARD	1 BOLT (12 YARDS)
CX10835-BLACK	1/2 YARD	1 BOLT (6 YARDS)
CX10834-LIME	3/4 YARD	1 BOLT (9 YARDS)
CX10833-BLACK	1 1/4 YARDS	1 BOLT (15 YARDS)
CX10839-MULTI*	5/8 YARD	1 BOLT (7 1/2 YARDS)
CX10833-AQUA**	4 1/2 YARDS	4 BOLTS (54 YARDS)

TOTAL # OF BOLTS: 12 BOLTS (8 W/O BACKING)

\*INCLUDES BINDING

\*\*BACKING



WIDE BACK

108 INCH WIDE BACK COTTON

PAIR OUR WIDE BACK  
WBX9169- NAVY SISAL  
WITH THIS PROJECT! USE  
2 1/2 YARDS FOR BACKING

\*IMAGE SHOWN NOT TRUE TO SCALE

michae| miller FABRICS

118 WEST 22ND STREET | 5TH FLOOR | NEW YORK CITY, NY 10011 | 212.704.0774  
MICHAELMILLERFABRICS.COM | INFO@MICHAELMILLERFABRICS.COM