

HERE'S LOOKING AT YOU!

SIZE: 48-1/2" x 57-1/2" • LEVEL: ADVANCED BEGINNER • PATTERN BY: MARSHA EVANS MOORE
• FABRIC COLLECTION: BRUSH WITH NATURE

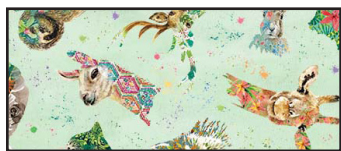


THIS IS A DIGITAL REPRESENTATION OF THE QUILT TOP, FABRIC MAY VARY.

PLEASE NOTE: BEFORE BEGINNING YOUR PROJECT, CHECK FOR ANY PATTERN UPDATES AT MICHAELMILLERFABRICS.COM'S FREE PROJECTS SECTION.

p.212.704.0774 | info@michaelmillerfabrics.com | www.michaelmillerfabrics.com

Here's Looking At You!



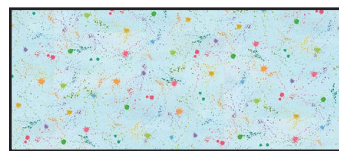
FABRIC A
DDC10483_GREEN
5/8 yard



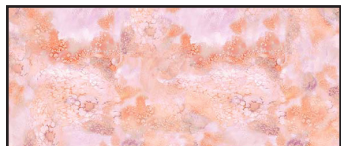
FABRIC B
DDC10484_CREAM
3/8 yard



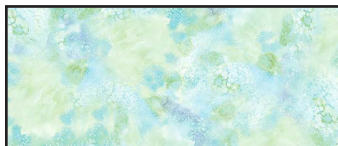
FABRIC C
DDC10485_PINK
1/4 yard



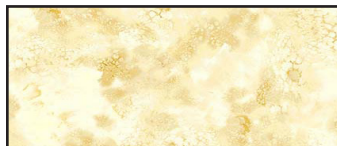
FABRIC D
DDC10485_BLUE
1/4 yard



FABRIC E
DDC10486_PINK
3/8 yard



FABRIC F
DDC10486_BLUE
1/2 yard



FABRIC G
DDC10486_YELLOW
1/2 yard



FABRIC H
DDC10486_CREAM
1/4 yard



FABRIC I
DDC10487_MULTI
7/8 yard



FABRIC J
DC9367_Aqua
1 yard



Here's Looking At You!

KEY	CUTTING INSTRUCTIONS
A	(4) 4-1/8" x 42" strips; subcut (22) triangle templates alternating triangles along length to conserve fabric.
B	Centering animal squares, fussy-cut: (30) 2" squares.
C	(3) 2" x 42" strips; subcut (12) 2" x 8" strips.
D	(3) 2" x 42" strips; subcut (12) 2" x 8" strips.
E	(1) 4-1/2" x 42" strip; subcut (2) 4-1/2" squares and (7) 4-3/8" squares. (1) 4-3/8" x 42" strip; subcut (4) 4-3/8" squares. Cut all 4-3/8" squares in half diagonally once to make (22) triangles.
F	(1) 4-1/2" x 42" strip; subcut (2) 4-1/2" squares and (8) 2" x 8" strips. (2) 4-3/8" x 42" strips; subcut (11) 4-3/8" squares and (5) 2" x 8" strips. Cut all 4-3/8" squares in half diagonally once to make (22) triangles.
G	(2) 2" x 42" strips; subcut (6) 2" x 8" strips. (8) 1-1/4" x 42" strips; subcut (22) Border Template 1 and (22) Border Template 2.
H	(2) 2" x 42" strips; subcut (6) 2" x 8" strips.
I	(5) 1-3/4" x 42" strips, sew short ends together. Subcut (2) 1-3/4" x 51-1/2" borders and (2) 1-3/4" x 42-1/2" borders. Trim ends diagonally. FOR BINDING: (6) 2-1/4" x 42" strips, sew short ends together.
J	Centering animal squares, fussy-cut (20) 8" squares.
	Batting 57" x 66"

ADDITIONAL MATERIALS

3 yards backing fabric
Thread to match fabrics
Rotary cutter, ruler and mat
Template plastic
Sewing machine
Basic sewing supplies

Here's Looking At You!

QUILT CENTER

1. Following the quilt layout on page 5, arrange (4) **J** 8" squares and (5) **F**, **G**, and **H** 2" x 8" strips for each horizontal row. Sew the strips and squares in each row together. Row 1 is shown below. Make 5 rows.

Row 1



Make 1

2. Arrange (5) **B** 2" squares alternating with (2) **C** 2" x 8" strips and (2) **D** 2" x 8" strips. Sew the squares and strips together to make each sashing row. Sashing row 1 is shown below. Make (6) sashing rows.

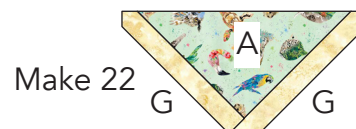
Sashing Row 1



3. Sew together (6) sashing rows alternating with (5) block rows matching the seams. Quilt center should measure 38" x 47" including seam allowance.

PATCHWORK BORDER

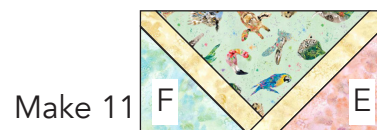
4. Sew (1) **G** Border Template 1 to short edge of (1) **A** Triangle. Sew (1) **G** Border Template 2 to remaining short edge of **A** triangle. Make 22.



5. Sew (1) **E** 4-3/8" triangle to opposite edge of Border Template 1. Sew (1) **F** 4-3/8" triangle to opposite edge of Border Template 2 to make (1) border unit. Make 11.

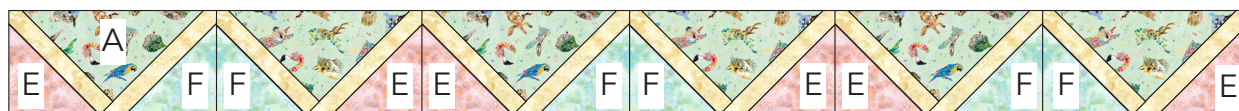


6. Sew (1) **F** 4-3/8" triangle to opposite edge of Border Template 1. Sew (1) **E** 4-3/8" triangle to opposite edge of Border Template 2 to make (1) border unit. Make 11.



7. Sew the ends of (6) border units together to make the side borders alternating the units made in steps 5-6 so the **E** and **F** triangles are adjacent. Use scant, approximately 3/16" seam allowance so border measures 4-1/2" x 49-1/2" including seam allowance. Make 1 each.

Left side border



Right side border



Make 1 each

Here's Looking At You!

8. Sew the ends of (5) border units together to make the top and bottom borders in the same manner. Borders should measure 4-1/2" x 40-1/2" including seam allowance. Make 1 each.

Top border



Bottom border



Make 1 each

9. Sew (1) **I** 1-3/4" x 51-1/2" border to each side of quilt center beginning and ending 1/4" from the edge of the quilt top. Sew (2) **I** 1-3/4" x 42-1/2" borders to top and bottom of the quilt center.

10. Sew the side borders to the top and bottom borders along the diagonal ends at each corner.

11. Sew (1) side patchwork border to each side of quilt. Sew (1) **E** and (1) **F** 5-1/2" square to ends of top and bottom patchwork border. Note orientation of borders and placement of squares. Sew to top and bottom of quilt.

FINISHING: Layer quilt top, batting and backing together to form quilt sandwich. Baste and quilt as desired. Bind using six fabric **I** 2-1/4" strips.

Here's Looking At You!

Quilt Layout



Here's Looking At You!

