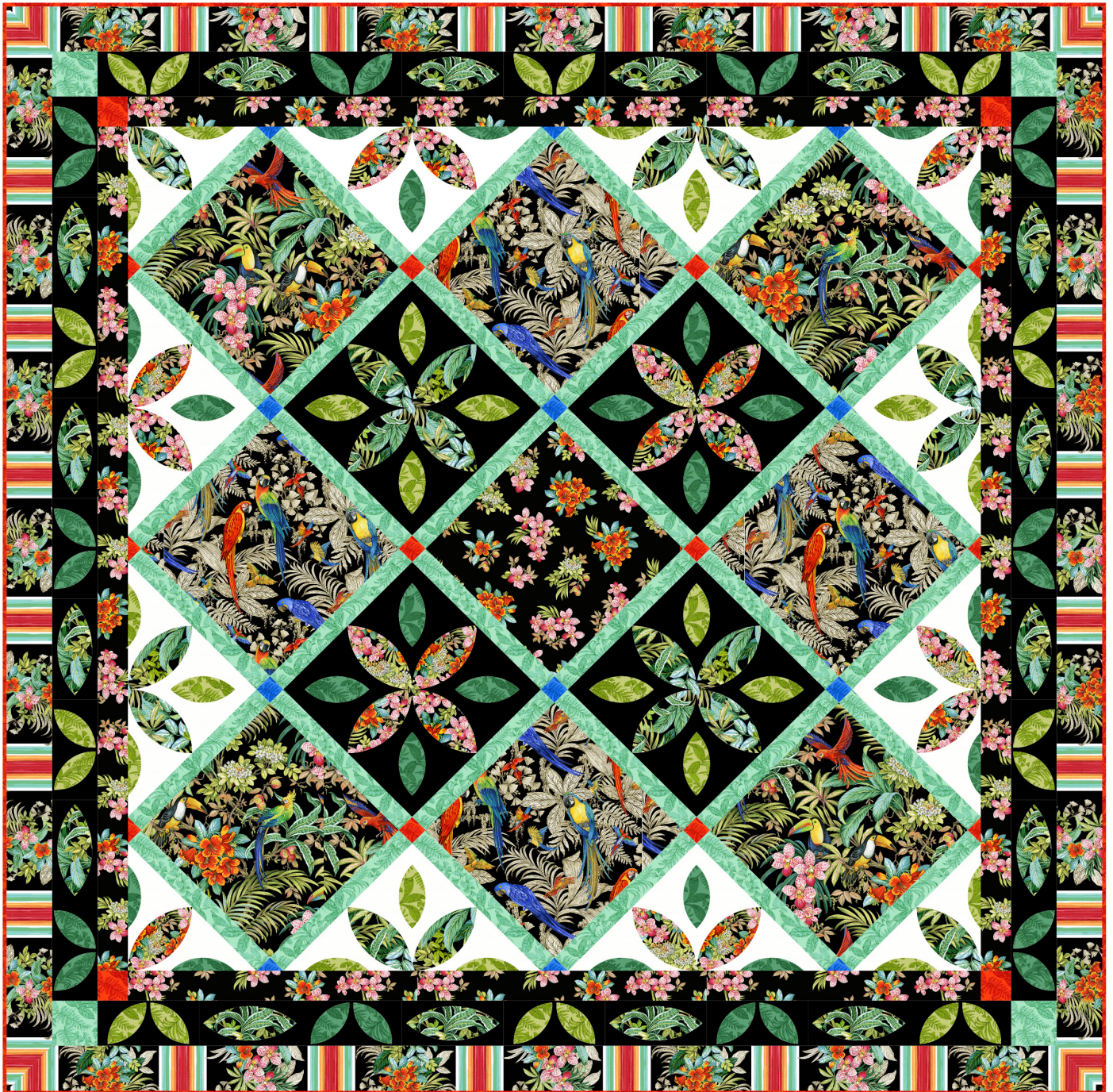


michael miller FABRICS

# TROPICAL ENCHANTMENT

SIZE: 72" X 72" • LEVEL: INTERMEDIATE • PATTERN BY: MARSHA EVANS MOORE • FABRIC COLLECTION: EXOTICA



THIS IS A DIGITAL REPRESENTATION OF THE QUILT TOP, FABRIC MAY VARY.

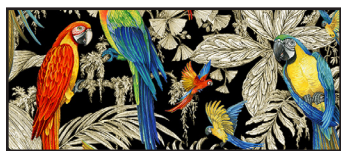
**PLEASE NOTE:** BEFORE BEGINNING YOUR PROJECT, CHECK FOR ANY PATTERN UPDATES AT [MICHAELMILLERFABRICS.COM](http://MICHAELMILLERFABRICS.COM)'S FREE PROJECTS SECTION.

p.212.704.0774 | [info@michaelmillerfabrics.com](mailto:info@michaelmillerfabrics.com) | [www.michaelmillerfabrics.com](http://www.michaelmillerfabrics.com)





# Tropical Enchantment



**FABRIC A**  
DCX10271 BLACK  
1 yard



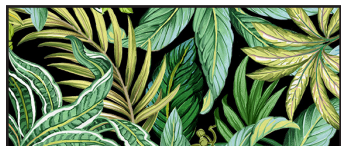
**FABRIC B**  
DCX10272 BLACK  
1 yard



**FABRIC C**  
DCX10273 BLACK  
5/8 yard



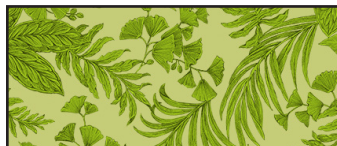
**FABRIC D**  
DCX10274 BLACK  
7/8 yard



**FABRIC E**  
DCX10275 BLACK  
3/4 yard



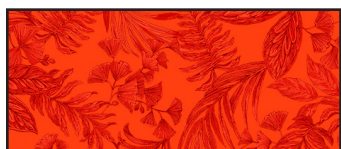
**FABRIC F**  
DCX10276 BLACK  
1 yard



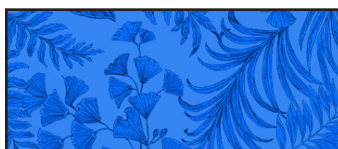
**FABRIC G**  
DCX10279 FERN  
1/2 yard



**FABRIC H**  
DCX10279 JUNGLE  
1/2 yard



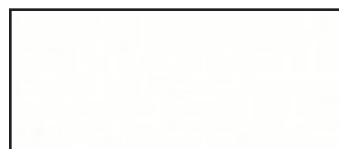
**FABRIC I**  
DCX10279 RED  
5/8 yard



**FABRIC J**  
DCX10279 ROYAL  
1/8 yard



**FABRIC K**  
DCX10279 MINT  
7/8 yard



**FABRIC L**  
sc5333 BRIGHT WHITE  
1-3/4 yard



**FABRIC M**  
sc5333 BLACK  
1-5/8 yard



# Tropical Enchantment

KEY	CUTTING INSTRUCTIONS
<b>A</b>	(4) 12-1/2" squares on-point, fussy cut over birds.
<b>B</b>	(4) 12-1/2" squares on-point, fussy cut over birds.
<b>C</b>	(18) Leaf 1 templates.
<b>D</b>	(1) 12-1/2" square. (4) 2-1/2" x 29" strips and (3) 2-1/2" x 42" strips, sew short ends together. Subcut (4) 2-1/2" x 56-3/4" strips.
<b>E</b>	(34) Leaf 1 templates.
<b>F</b>	(8) 3-1/2" x 42" strips, sew short ends together. Subcut (4) 3-1/2" x 73-3/4" strips; trim ends diagonally.
<b>G</b>	(12) Leaf 2 templates. (12) Leaf 3 templates. (20) Leaf 4 templates.
<b>H</b>	(12) Leaf 2 templates. (12) Leaf 3 templates. (20) Leaf 4 templates.
<b>I</b>	(1) 2-1/2" x 42" strip; subcut (4) 2-1/2" squares, (3) 2-1/8" squares and (6) 1-3/4" squares. Cut 2-1/8" squares in half diagonally, one time, to make (6) 2-1/8" triangles. <b>FOR BINDING:</b> (8) 2-1/4" x 42" strips, sew short ends together.
<b>J</b>	(1) 2-1/8" x 42" strip; subcut (3) 2-1/8" squares and (6) 1-3/4" squares. Cut 2-1/8" squares in half diagonally, one time, to make (6) triangles.
<b>K</b>	(1) 3" x 42" strip; subcut (4) 3" squares. (12) 1-3/4" x 42" strips; subcut (36) 1-3/4" x 12-1/2" strips.
<b>L</b>	(2) 12-1/2" x 42" strips; subcut (4) 12-1/2" squares and (2) 9-3/8" squares. Cut all squares in half, one time, to make (8) large triangles and (4) small triangles.
<b>M</b>	(2) 12-1/2" x 42" strips; subcut (4) 12-1/2" squares. (6) 3-1/2" x 42" strips; sew ends together. Cut (4) 3-1/2" x 60-3/4" borders.
	80" x 80" batting.



# Tropical Enchantment

## ADDITIONAL REQUIREMENTS

Thread to match fabrics

Basic sewing supplies

Template plastic

### Optional:

1/4 yard lightweight fusible interfacing

**For turned under edge appliqué:** freezer paper or other template paper

**For raw edge appliqué:** paper backed fusible webbing

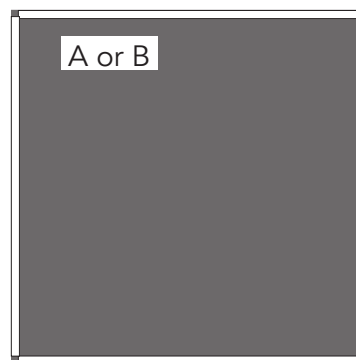
Sewing machine

Rotary cutter, ruler and mat

## CUTTING

Draw a 12-1/2" square template to fussy-cut fabric. Place on fabrics A and B centered over bird motifs and trace templates on-point. Trace all (4) squares before cutting fabric.

You may want to stabilize the seam lines of the bias edges. Cut 1/4" x 12" strips of lightweight interfacing and fuse to wrong side of squares along the edges.



Wrong Side

## APPLIQUÉ BLOCKS

1. Prepare (18) **C** and (34) **E** Leaf 1 Template appliqué pieces using your preferred appliqué method. Prepare (12) **G** and (12) **H** Leaf 2 Template appliqué pieces. Prepare (12) **G** and (12) **H** Leaf 3 Template appliqué pieces. Prepare (20) **G** and (20) **H** Leaf 4 Template appliqué pieces. (Set aside (16) **E** Leaf 1 appliqué pieces, and all (20) **G** and (20) **H** Leaf 4 appliqué pieces for the border.)



Make 18



Make 34



Make 12



Make 12



Make 12



Make 12

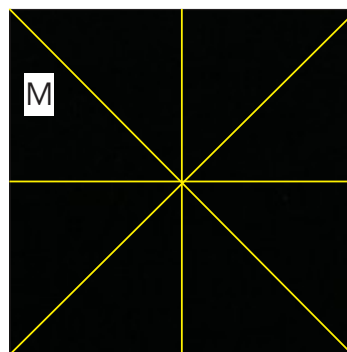


Make 20



Make 20

2. Draw lines along the vertical and horizontal center of (1) **M** 12-1/2" square. Draw diagonal lines from corner to corner. Make 4.



Make 4

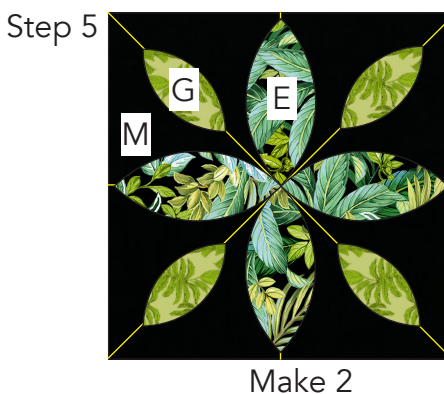
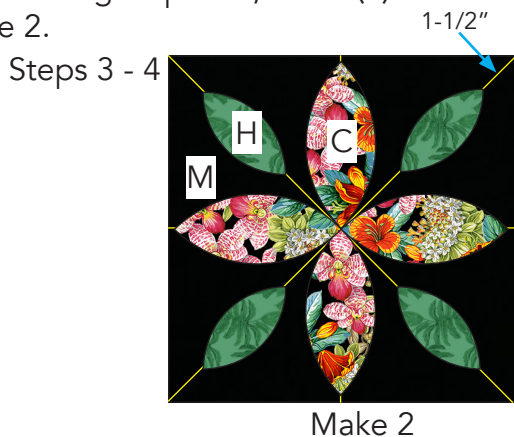


# Tropical Enchantment

**3.** Place (4) **C** Leaf 1 appliqués on (1) **M** marked 12-1/2" square so inner points of each leaf meets in the center and outer points are 1/4" from the outer edge. Fuse or pin in place. Sew the Leaves to the square using your preferred method.

**4.** Place (4) **H** Leaf 2 appliqués centered on the diagonal lines so outer points are 1-1/2" from the corner. Fuse or pin in place. Sew the Leaves to the square using your preferred method. Make 2.

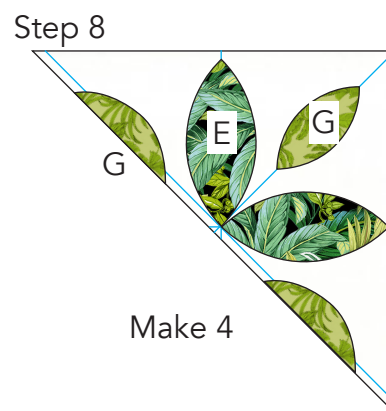
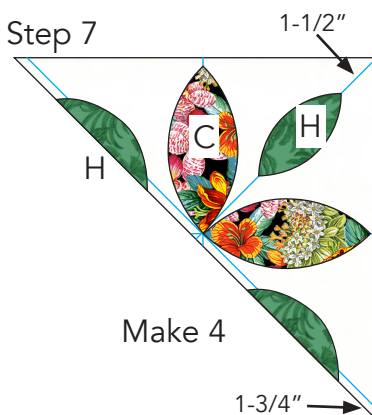
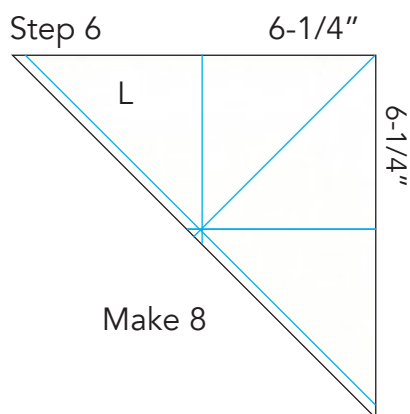
**5.** Following steps 3-4, make (2) blocks using (4) **E** Leaf 1 appliqués and (4) **G** Leaf 2 appliqués. Make 2.



**6.** Draw a line 1/4" from the long edge of (1) **L** Large Triangle to mark the seamline. Draw (2) lines on the triangle 6-1/4" from the 90° corner perpendicular to the short edges. Draw a line from the corner to the center of the long edge. Make 8.

**7.** Place (2) **C** Leaf 1 appliqués on (1) **L** Large Triangle centered on the lines as shown. Make sure outer points are 1/4" from short edges. Place (1) **H** Leaf 2 appliqué along the diagonal line 1-1/2" from corner. Place (2) **H** Leaf 3 appliqués along the long edge 1-3/4" from end. Fuse or pin in place. Sew the Leaves to the square using your preferred method.

**8.** Following step 7, make triangles using (2) **E** Leaf 1 appliqués, (1) **G** Leaf 2 appliqué and (2) **G** Leaf 3 appliqués. Make 2.

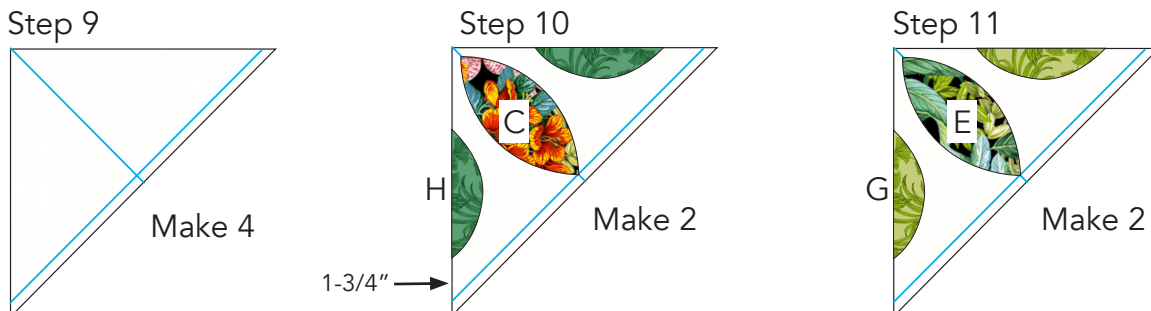


# Tropical Enchantment

**9.** Draw a line  $\frac{1}{4}$ " from the long edge of (1) **L** Small Triangle to mark the seamline. Draw a line from the corner to the center of the long edge. Make 4.

**10.** Place (1) **C** Leaf 1 appliqué on (1) **L** Large Triangle centered on the center line as shown. Make sure points are  $\frac{1}{4}$ " from corner. Place (2) **H** Leaf 3 appliqués along the short edges  $1\frac{3}{4}$ " from corners. Fuse or pin in place. Sew the Leaves to the square using your preferred method. Make 2.

**11.** Following step 10, make triangles using (2) **E** Leaf 1 appliqués, and (2) **G** Leaf 3 appliqués. Make 2.



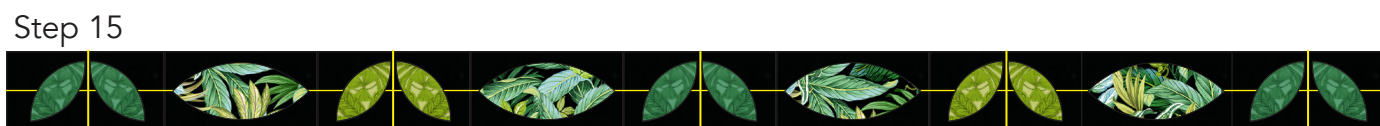
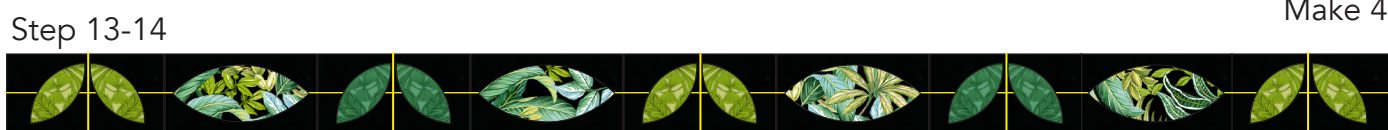
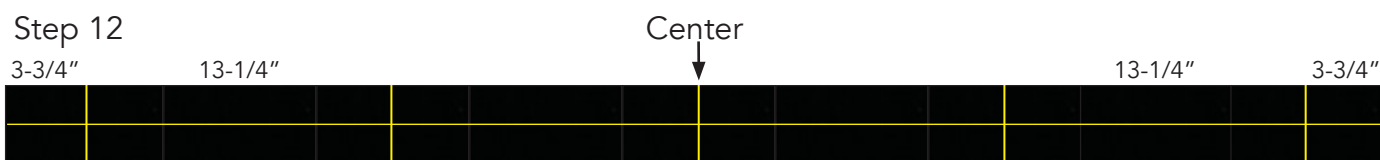
## APPLIQUÉ BORDER

**12.** Draw a line along the vertical center of (1) **M**  $3\frac{1}{2}$ " X  $60\frac{3}{4}$ " borders. Mark the vertical center. Draw lines  $3\frac{3}{4}$ " and 17" from each end. Make 4.

**13.** Place (2) **G** Leaf 4 appliqués on each side of the  $3\frac{3}{4}$ " and center vertical lines as shown on placement pattern on page 6. Place (2) **H** leaf 4 appliqués on each side of the remaining vertical lines. Fuse or pin in place. Sew the Leaves to the square using your preferred method.

**14.** Place (4) **E** Leaf 1 appliqués along the vertical center, centered between the Leaf 4 pairs. Fuse or pin in place. Sew the Leaves to the square using your preferred method. Make 2.

**15.** Following steps 13-14, make 2 borders reversing the **G** and **H** Leaf 4 appliqués. Make 2.





# Tropical Enchantment

**16.** Following the Quilt Layout on page 7, arrange (4) Applique Blocks, (4) **A** 12-1/2" Squares, (4) **B** 12-1/2" squares, (1) **D** 12-1/2" square, (8) Large Triangles and (4) Small Triangles as shown. Sew together the Blocks, Squares and Triangles in each diagonal row alternating with **K** 1-3/4" x 12-1/2" strips to make each block row.

**17.** Sew together **K** 1-3/4" x 12-1/2" strips alternating with **I** and **J** 1-3/4" squares as shown to make sashing rows. Sew (1) **I** or (1) **J** 2-1/8" triangle to each end of the sashing rows. Note orientation of triangles.

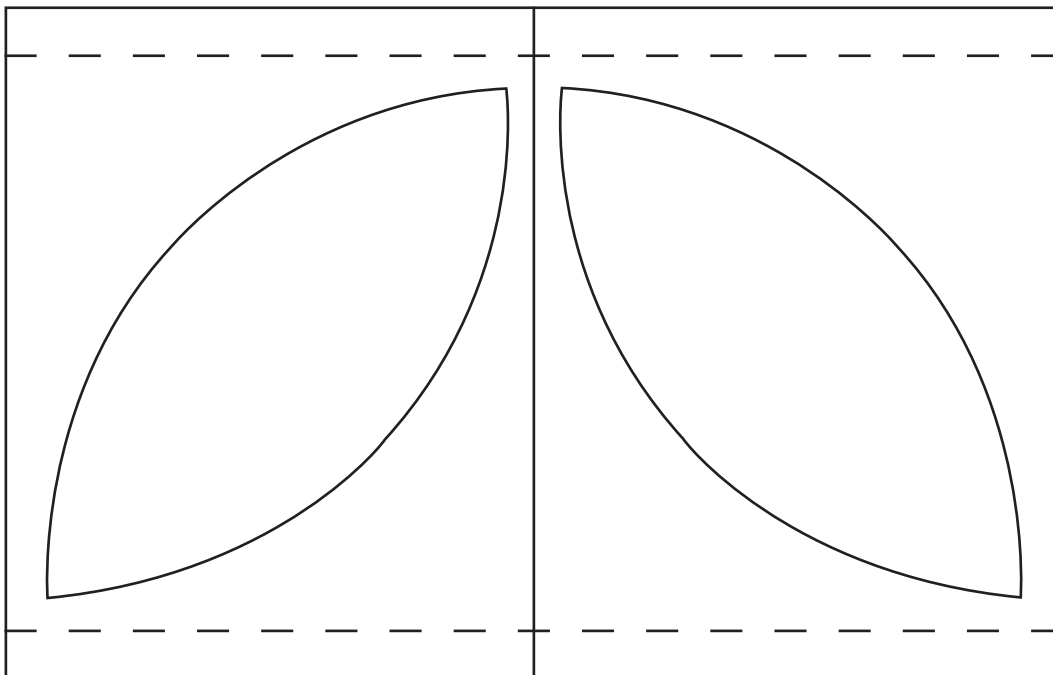
**18.** Sew together the block rows and sashing rows matching the seams to make the quilt center. Center should measure approximately 56-3/4" square including seam allowance.

**19.** Sew (1) **D** 2-1/2" x 56-3/4" border to each side of quilt. Sew (1) **I** 2-1/2" square to each end of (2) **D** 2-1/2" x 56-3/4" borders. Sew to top and bottom of quilt.

**20.** Sew (1) appliqué border to each side of quilt. Sew (1) **K** 3-1/2" square to each end of (2) appliqué borders. Sew to top and bottom of quilt. Note orientation of **G** and **H** leaves on all borders.

**21.** Sew the shorter edge of (1) **F** 3-1/2" x 73-3/4" border to each side and top and bottom edges of quilt beginning and ending seam 1/4" from ends of applique border. Sew adjacent borders together along diagonal ends.

Placement for Leaf 4 Templates on Border



# Tropical Enchantment

## QUILT LAYOUT



### Sashing Fabric Key



**FINISHING:** Layer quilt top, batting and backing together to form quilt sandwich. Baste and quilt as desired. Bind using nine fabric I 2-1/4" strips.



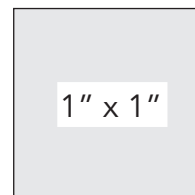
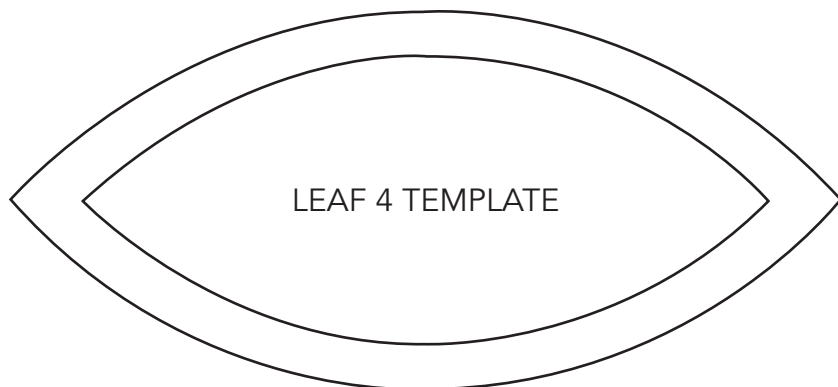
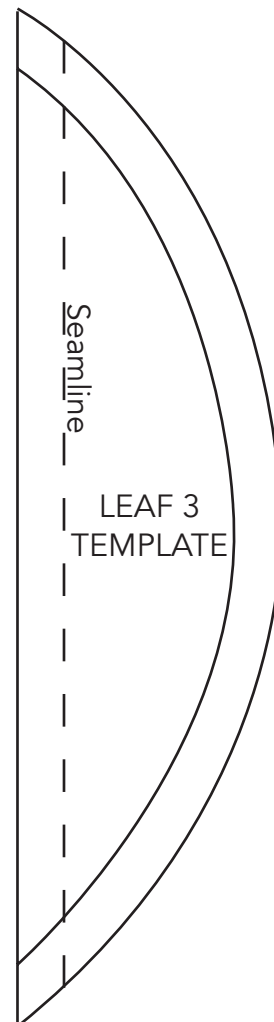
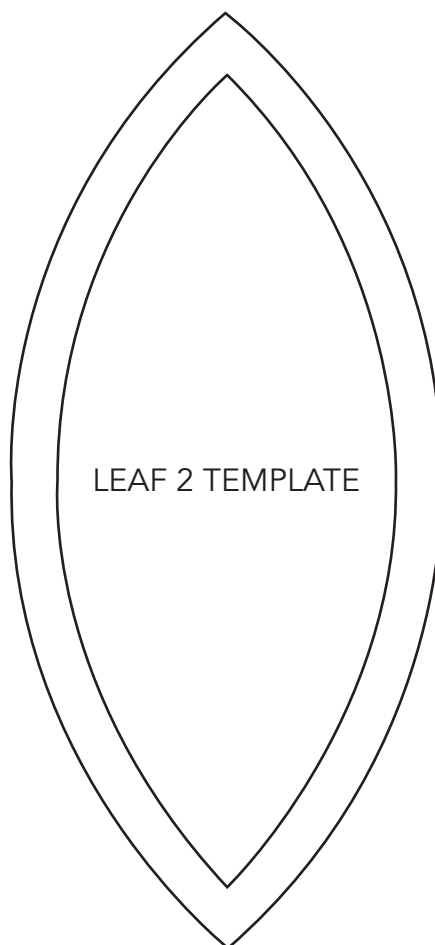
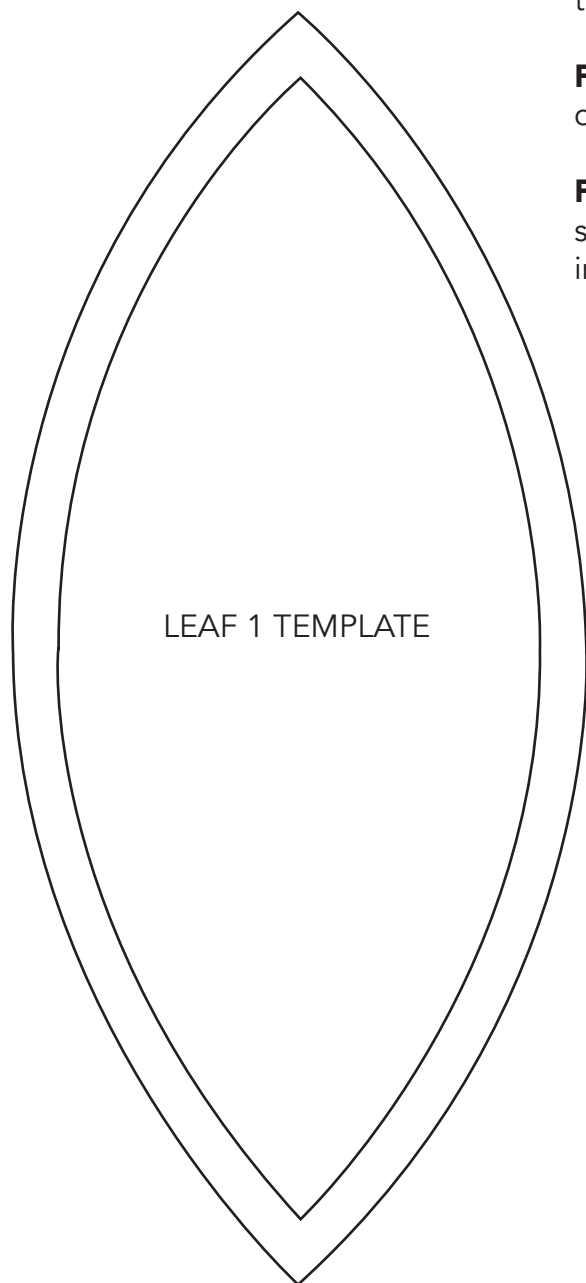
# Tropical Enchantment

## TEMPLATES

**For turned under appliqué techniques,** trace templates and cut along the solid outer line.

**For raw edge appliqué techniques,** trace templates and cut along the inner solid line.

**For both appliqué techniques,** do not trim or fold under straight edge of Leaf 3 template. 1/4" seam allowance is included.



Print at 100%.