

michael miller FABRICS

Sea World

SIZE: 45" W X 55" H

LEVEL: Confident Beginner

PATTERN BY: Project House 360

Nautilus



45" x 55"

PLEASE NOTE: THIS PATTERN HAS BEEN THROUGH OUR TECHNICAL EDITING PROCESS. HOWEVER, BEFORE BEGINNING YOUR PROJECT, CHECK FOR ANY PATTERN UPDATES AT MICHAELMILLERFABRICS.COM IN THE FREE DOWNLOAD SECTION.

THIS IS A DIGITAL REPRESENTATION OF THE QUILT TOP, FABRIC MAY VARY.

p.212.704.0774 | info@michaelmillerfabrics.com | www.michaelmillerfabrics.com

¼" Seam Allowance Check

Even if you use a ¼" foot, your seam allowance may not be accurate!

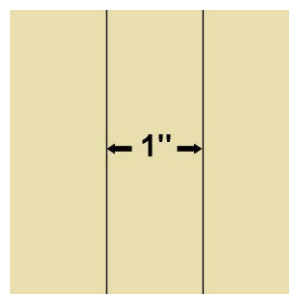
To check if your seam is accurate, cut three 1½" x 3" pieces from scrap fabric.

Sew the pieces together along the 3" side, using what you believe is a ¼" seam.

Press away from the center piece.

Measure.

The center piece should be **exactly** 1"



If, when you measure, the center is less than 1", your seam allowance is too large.

If it's more than 1", your seam allowance is too small.

Refer to your machine's owner's manual for instructions on changing your needle position.

Repeat the test until your center strip measures **exactly** 1".

Note: Fabric images are not to scale, they are for identification purposes only.



FABRIC A

SC5333 turquoise
⅛ yard



FABRIC B

DCX10396
1½ yards



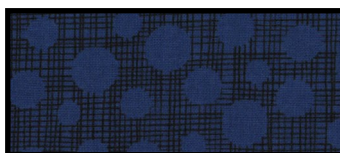
FABRIC C

CX10401 white
1⅛ yards



FABRIC D

SC5333 tangerine
⅛ yard



FABRIC E

CX6699 midnite
1 yard



FABRIC F

DCX10398 navy
1⅞ yards



FABRIC G

DCX10394 navy
1 full repeat

Backing: 3 yards

| FABRIC | CUTTING |
|----------|--|
| A | (1) 2" x WOF (width of fabric) strip. Subcut: (12) 2" squares |
| B | (2) 2" x 31½" strips, fussy cut from orange circles, centering on design (2) 2" x 21½" strips, fussy cut from light orange circles, centering on design (2) 2" x 36½" strips fussy cut from light blue jelly fish, centering on design (2) 2" x 46½" strips fussy cut from light blue jelly fish, centering on design |
| C | (2) 6½" x WOF strips. Subcut: (14) 4½" x 6½" (3) 2½" x WOF strips. Subcut: (40) 2½" squares (3) 2" x WOF strips. Subcut: (8) 2" squares; (8) 2" x 3½"; (8) 2" x 5" (40) template B |
| D | (1) 2" x WOF strip. Subcut: (12) 2" squares |
| E | (1) 2½" x WOF strip. Subcut: (10) 2½" squares (6) 2½" x WOF strips for binding (40) template A |
| F | (2) 3½" x 50" strips cut from length of fabric (2) 3½" x 60" strips cut from length of fabric |
| G | (1) 21½" x 31½", fussy cut, centering design |

BLOCK A:

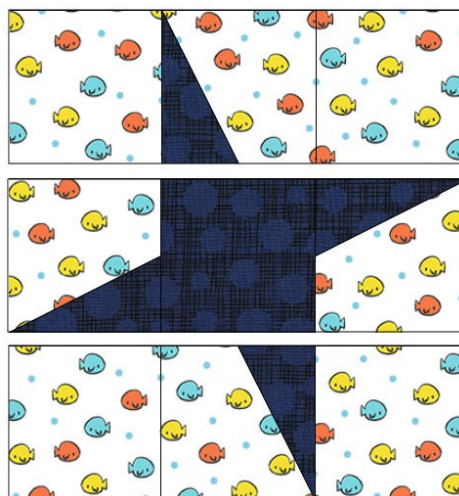
Make 10

1. Stitch one template A and one template B together in pairs. Square to 2½".
2. Combine four units with four fabric C 2½" squares and one fabric E 2½" square as shown. Square block to 6½".

Step #1



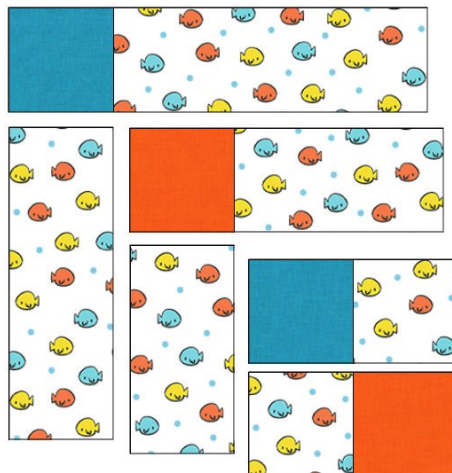
Step #2



BLOCK B:

Make 4

3. Stitch one fabric D 2" square, one fabric A 2" square and two fabric C 2" squares together as shown to make a four-patch unit. Square to 3½".
4. Add two fabric C 2" x 3½" strips and one fabric D 2" square. Square to 5".
5. Add two fabric C 2" x 5" strips and one fabric A 2" square. Square to 6½".



ASSEMBLY:

6. Refer to the assembly diagram on page 5 as we assemble the quilt top. Stitch one fabric B 2" x 21½" strip (light orange) to the top and bottom of the fabric G 21½" x 31½" rectangle.
7. Stitch one fabric A 2" square to each end of two fabric B 2" x 31½" strips (orange). Add to the sides of the quilt.
8. Use the diagram on page 5 to add blocks A and B as well as the fabric C 4½" x 6½" rectangles.
9. Add one 2" x 36½" fabric B (light blue jelly fish) strips to the top and bottom of the quilt.
10. Stitch one fabric D 2" square to each end of two fabric B (light blue jelly fish) strips. Add to the sides of the quilt.
11. Stitch the fabric F 3½" x 50" strips to the top and bottom of the quilt, preparing to miter corners.
12. Stitch the fabric F 3½" x 60" strips to the sides of the quilt, mitering corners.

FINISHING:

13. Layer, baste and quilt as desired.
14. Bind with six fabric E 2½" x WOF strips.

Assembly Diagram



