

michael miller FABRICS

OCEAN CURRENTS

SIZE: 56" X 71-1/4" • LEVEL: INTERMEDIATE • PATTERN BY: MARSHA EVANS MOORE • FABRIC COLLECTION: SEA LIFE



THIS IS A DIGITAL REPRESENTATION OF THE QUILT TOP, FABRIC MAY VARY.

PLEASE NOTE: BEFORE BEGINNING YOUR PROJECT, CHECK FOR ANY PATTERN UPDATES AT MICHAELMILLERFABRICS.COM'S FREE PROJECTS SECTION.

p.212.704.0774 | info@michaelmillerfabrics.com | www.michaelmillerfabrics.com



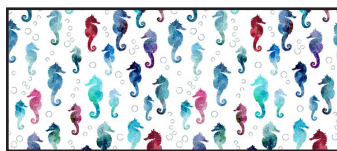
Ocean Currents



FABRIC A
DCX9954_Navy
1-1/8 yards



FABRIC B
DCX9955_Navy
1-1/2 yards



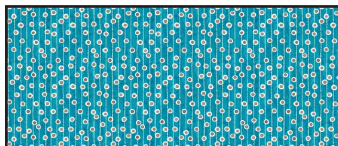
FABRIC C
DCX9956_White
7/8 yard



FABRIC D
DCX9957_White
1-1/8 yards



FABRIC E
DCX9958_Aqua
5/8 yard



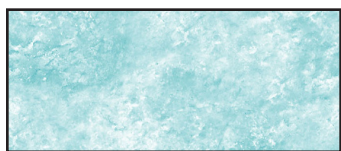
FABRIC F
DCX9959_Aqua
1/8 yard



FABRIC G
DCx9959_Magenta
1-1/4 yards



FABRIC H
DCx9961_White
3/4 yard



FABRIC I
DCX9962_Aqua
1 yard



Ocean Currents

Please note: Read the entire pattern before you begin. Patterns are found on pages 7-15. Cut out the pattern pieces and assemble Templates 3, 4 and 5 following the instructions. Mark the dots on the wrong side of the fabric pieces.

KEY	CUTTING INSTRUCTIONS
A	(6) Section 4 Templates. (6) Section 7 Templates. (6) Section 1 Templates.
B	(6) Section 3 Templates. (6) Section 6 Templates. (6) 3-3/8" x 42" strips; sew ends together. Subcut (2) 3-3/8" x 62-3/4" borders and (2) 3-3/8" x 47-1/2" borders. Cut curves.
C	(6) Section 3 Templates. (6) Section 6 Templates.
D	(6) Section 4 Templates. (6) Section 7 Templates. (6) Section 1 Templates.
E	(6) Section 2 Templates. (6) Section 5 Templates.
F	(1) 1-3/4" x 42" strip; subcut (20) 1-3/4" squares.
G	(6) Section 2 Templates. (6) Section 5 Templates. FOR BINDING: (7) 2-1/4" x 42" strips, sew short ends together.
H	(1) 14-1/2" x 42" strip; subcut (16) 14-1/2" x 1-3/4" vertical strips. (5) 1-3/4" x 42" strips; subcut (15) 1-3/4" x 14-1/2" horizontal strips.
I	(6) 3-3/8" x 42" strips; sew ends together. Subcut (2) 3-3/8" x 62-3/4" borders and (2) 3-3/8" x 47-1/2" borders.
	Batting 64" x 79"

ADDITIONAL REQUIREMENTS:

Thread to match fabrics
Rotary cutter, ruler and mat
Optional: Template plastic

Sewing machine
Basic sewing supplies

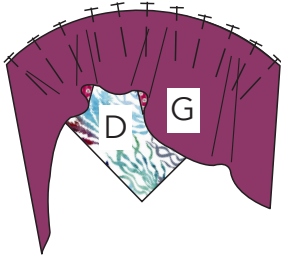
Ocean Currents

BLOCKS

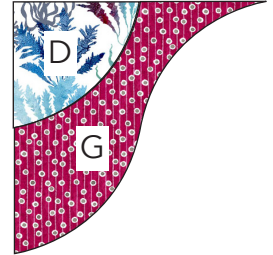
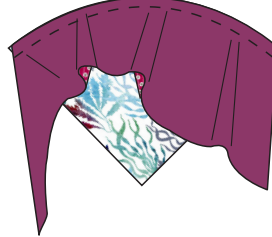
1. Align the dots of the inner curve of (1) **G** Template 2 and the curved edge of (1) **D** Template 1 and pin the edges together at the dots. Ease the curve along the seam line and pin about every 1/2" - 3/4".

2. Carefully and slowly sew along the seamline. Press the seam toward Template 1.

Step 1



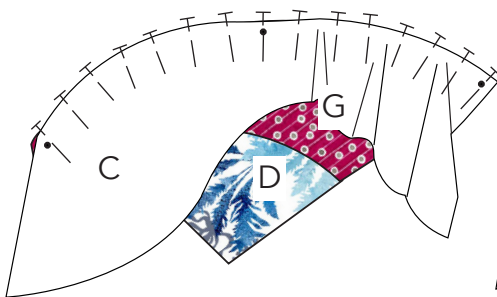
Step 2



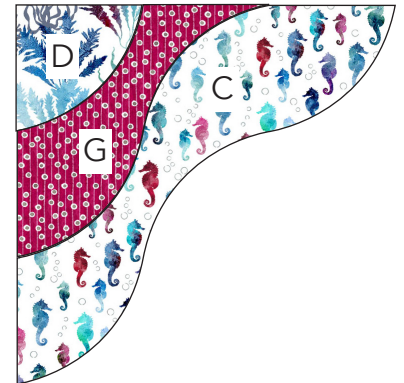
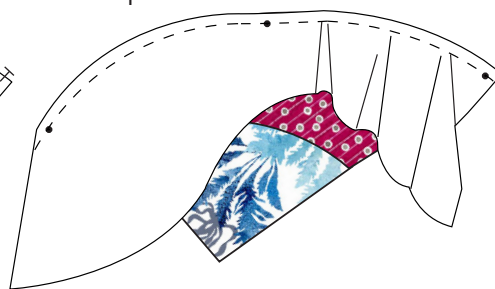
3. Align the dots of the seamline of (1) **C** Template 3 and the seamline of the **G** Template 2 and pin the edges together at the dots. Ease the curves together along the seam line and pin about every 3/4".

4. Carefully and slowly sew along the seamline. Press the seam toward pattern 2.

Step 3



Step 4



5. In the same manner, sew (1) **A** Template 4, (1) **E** Template 5, (1) **B** Template 6 and (1) **D** Template 7 to the joined pieces to make Block 1. Block should measure 14-1/2" square including seam allowances. Make 6.

6. Following steps 1-5, sew (1) **A** Template 1, (1) **E** Template 2, (1) **B** Template 3, (1) **D** Template 4, (1) **G** Template 5, (1) **C** Template 6 and (1) **A** Template 7 together to make Block 2. Make 6.

Step 5



Block 1
Make 6

Step 6



Block 2
Make 6

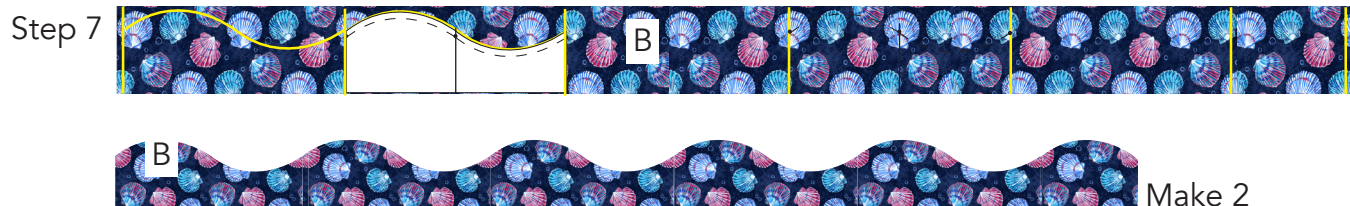
Ocean Currents

BORDERS

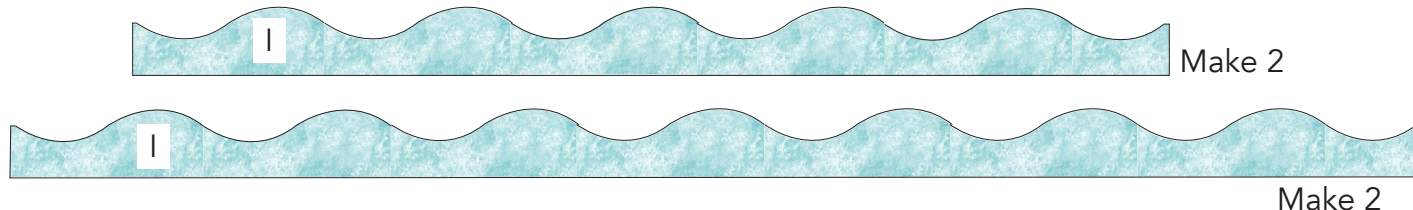
7. Draw a line $\frac{3}{8}$ " from the end of (1) **B** $3\text{-}\frac{3}{8}$ " x $47\text{-}\frac{1}{2}$ " border strip. Mark the border evenly about every $8\text{-}\frac{1}{2}$ ", then mark (1) last section at $4\text{-}\frac{1}{4}$ " ending $\frac{3}{8}$ " from the end to ensure even placement of templates.

Place the Top and Bottom Border Template on the strip and trace along the curved edge. Mark the dots. Move the template and trace 5 times. Trace the first half of the template once in the short section. Cut along the curved line. Make 2.

8. Draw a line $\frac{3}{8}$ " from the end of (1) **B** $3\text{-}\frac{3}{8}$ " x $62\text{-}\frac{3}{4}$ " border strip. Mark the border evenly about every $8\text{-}\frac{1}{4}$ ", then mark (1) last section at $4\text{-}\frac{1}{4}$ " ending $\frac{3}{8}$ " from the end. Repeat step 7 using the Side Border Template and (1) **B** $3\text{-}\frac{3}{8}$ " x $67\text{-}\frac{3}{4}$ " border strip. Repeat the template 7 times before tracing the half template. Cut along the curved line. Make 2.

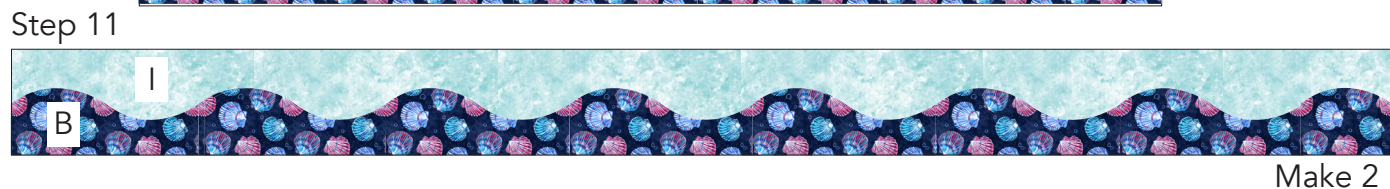


9. Reverse the templates and repeat step 7 and 8 to make the top and bottom borders and side borders using (1) **I** $3\text{-}\frac{3}{8}$ " x $47\text{-}\frac{1}{2}$ " border strip and (1) **I** $3\text{-}\frac{3}{8}$ " x $62\text{-}\frac{3}{4}$ ". Make 2 each.



10. Pin (1) **B** top and bottom border to (1) **I** top and bottom border matching the dots and easing the curved edges together. Sew carefully along the seamline. Make 2.

11. Repeat step 10 to sew (1) **B** side border to (1) **I** side border. Make 2.



Ocean Currents

CORNERS

12. Following steps 1 and 2, pin **I** Corner Template 2 to **B** Corner Template 1, matching the curved edges and sew them together. Corner should measure 4-3/4" square including seam allowances. Make 4.



ASSEMBLING THE BLOCKS

13. Arrange (2) Block 1 alternating with (1) Block 2. Sew together **H** (4) 1-3/4" x 14-1/2" strips alternating with the blocks to make Block Row 1. Note orientation of print on sashing. Make 2.



14. Arrange (2) Block 2 alternating with (1) Block 1. Sew together (4) **H** 1-3/4" x 14-1/2" strips alternating with the blocks to make Block Row 2. Note orientation of print on sashing. Make 2.



15. Sew together (4) **F** 1-3/4" squares and (3) **H** 1-3/4" x 14-1/2" strips to make the sashing rows. Note orientation of print on sashing. Make 5.



16. Following the quilt layout, sew together (5) sashing rows alternating with (4) block rows.

BORDERS

17. Following the quilt layout, sew the side borders to the sides of the quilt.

18. Sew (2) corner squares to the each end of the top and bottom borders. Sew (1) border to the top and bottom of the quilt.

FINISHING: Layer quilt top, batting and backing together to form quilt sandwich. Baste and quilt as desired. Bind using seven fabric **G** 2-1/4" strips.

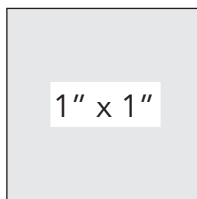
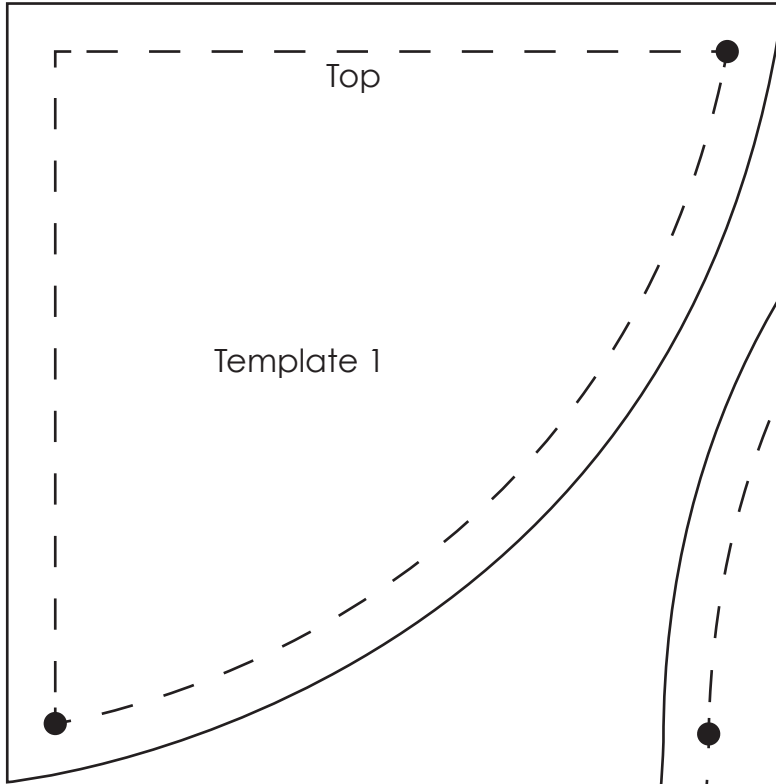
Ocean Currents

QUILT LAYOUT

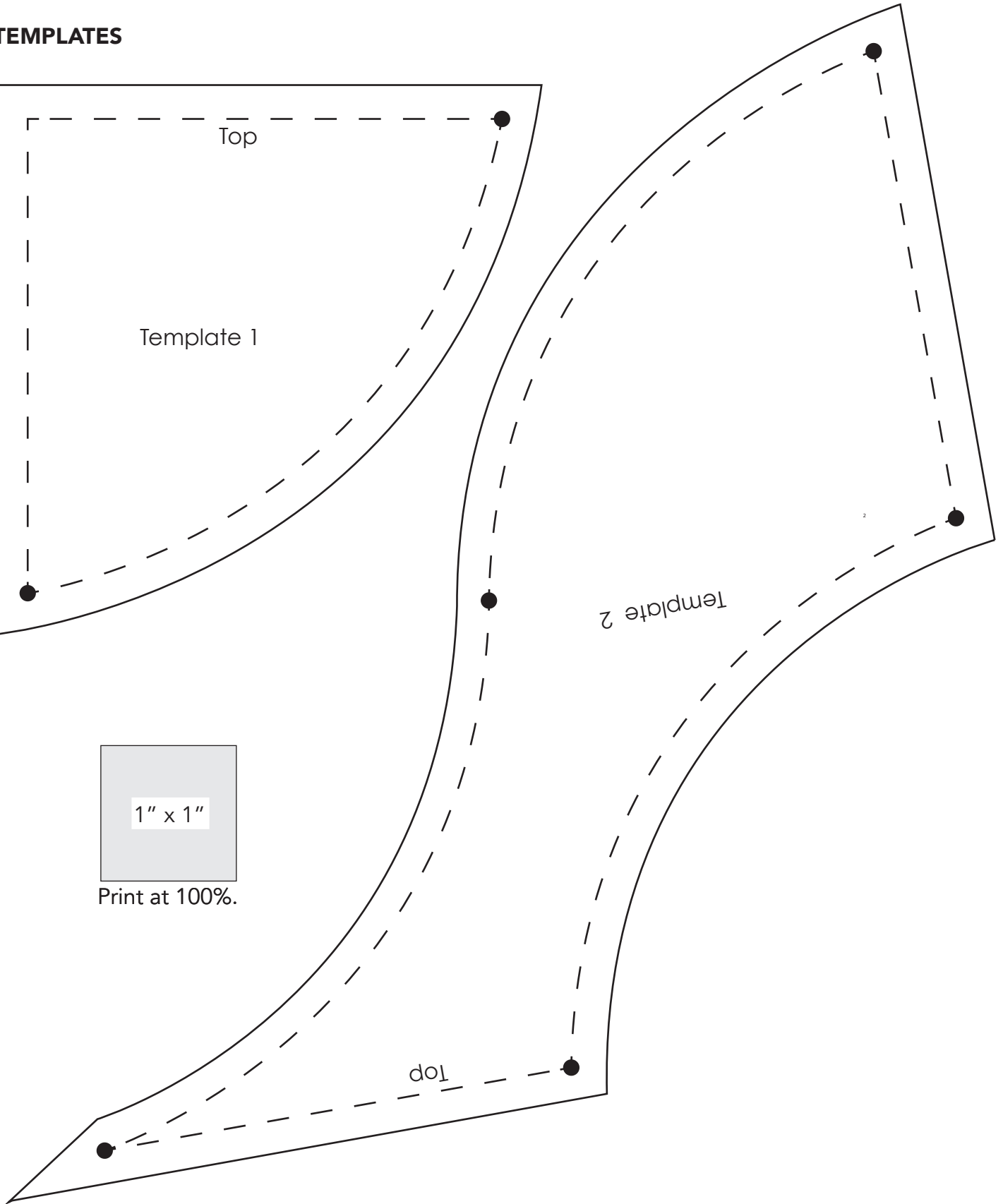


Ocean Currents

TEMPLATES

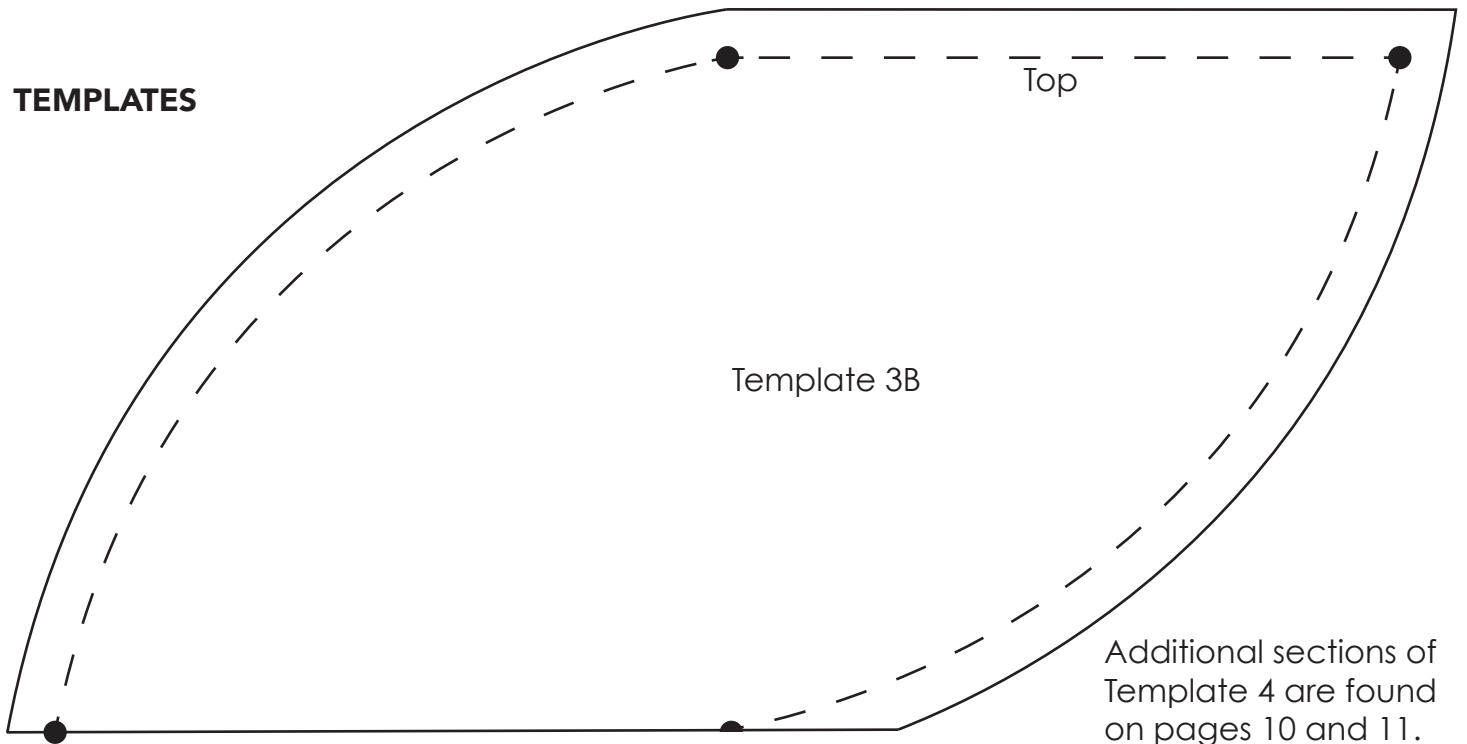


Print at 100%.

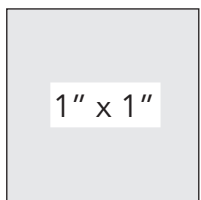


Ocean Currents

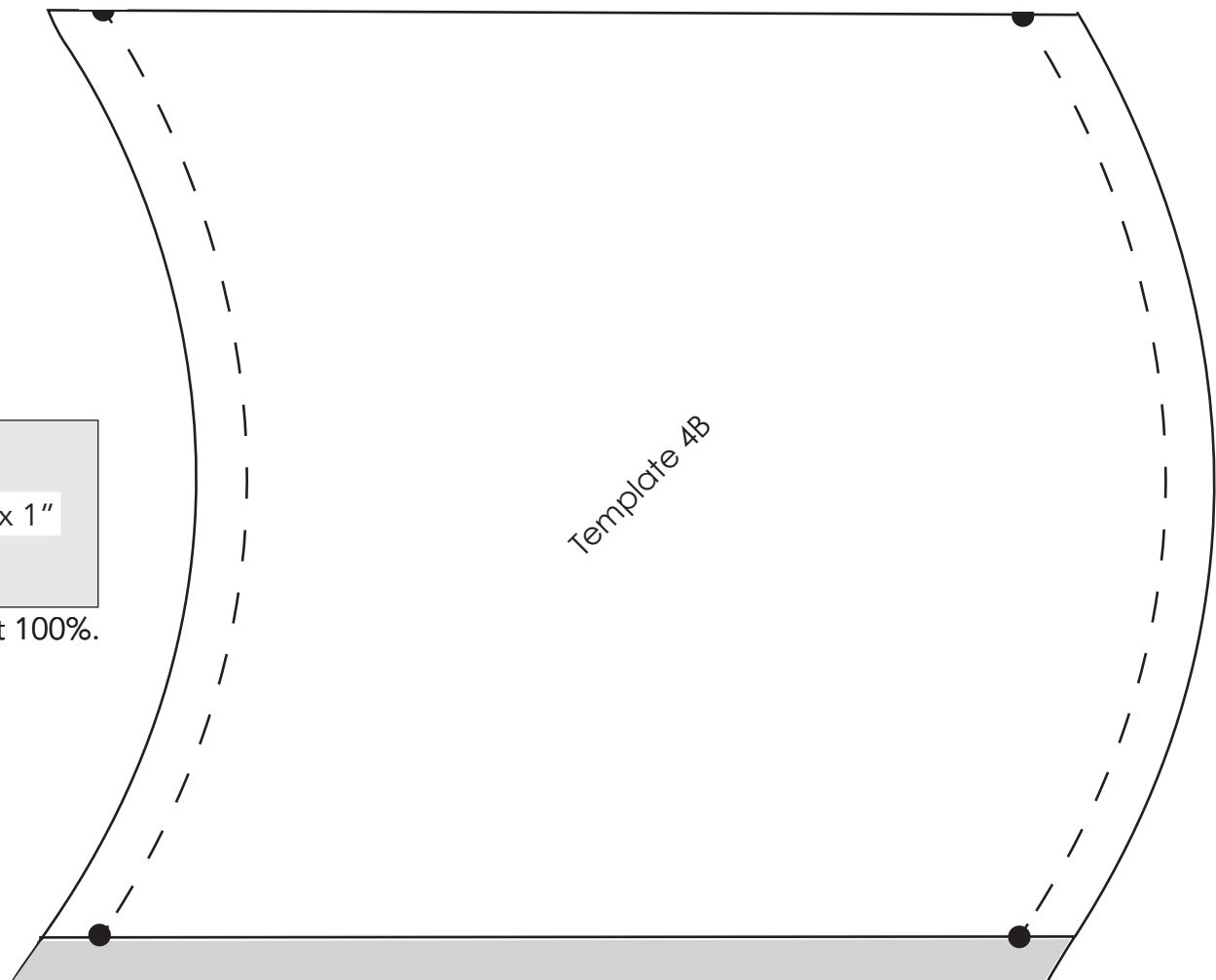
TEMPLATES



Additional sections of
Template 4 are found
on pages 10 and 11.

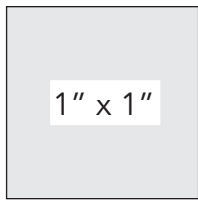


Print at 100%.

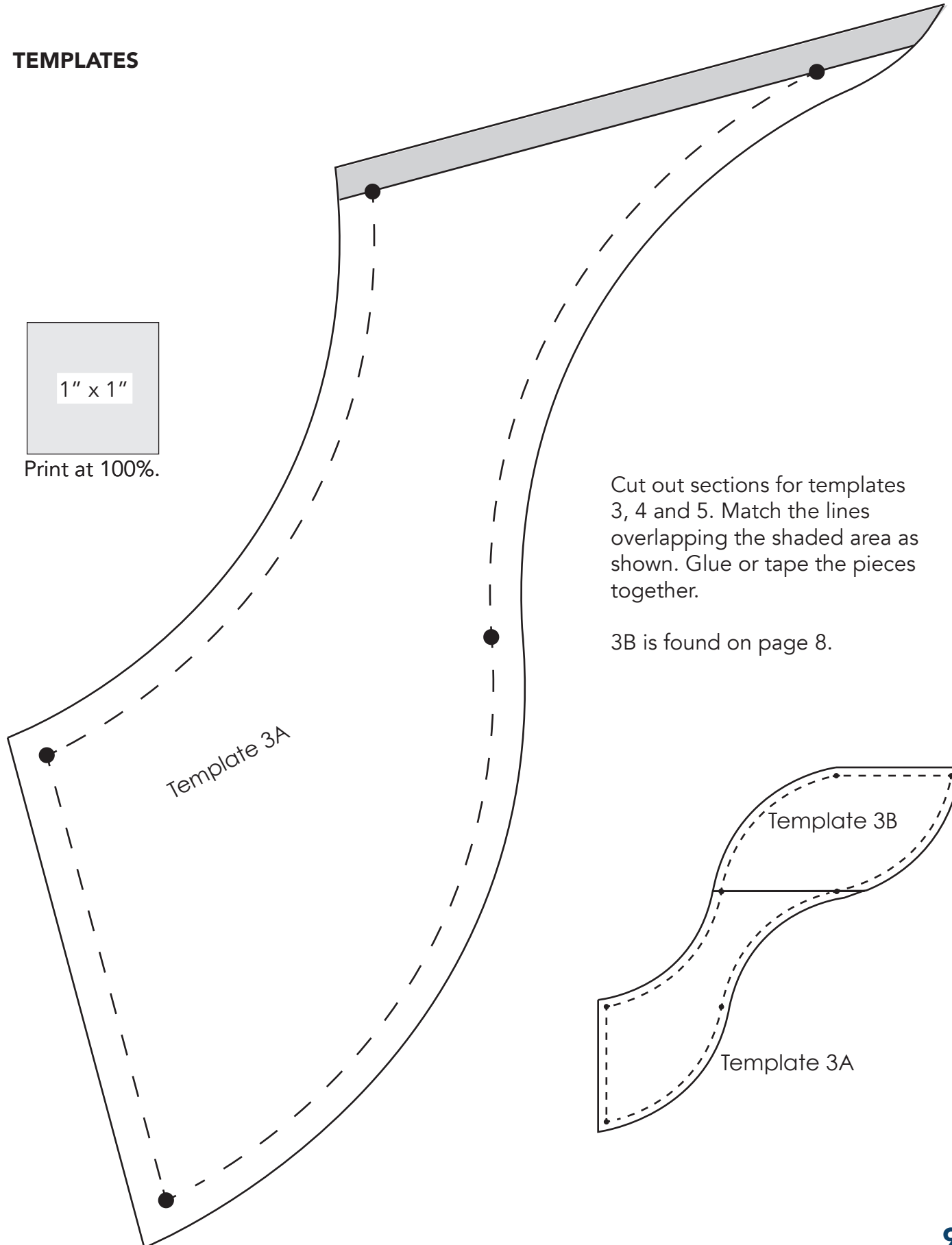


Ocean Currents

TEMPLATES

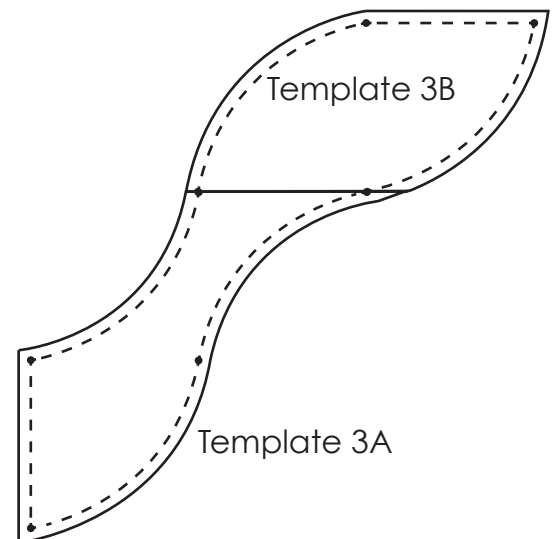


Print at 100%.

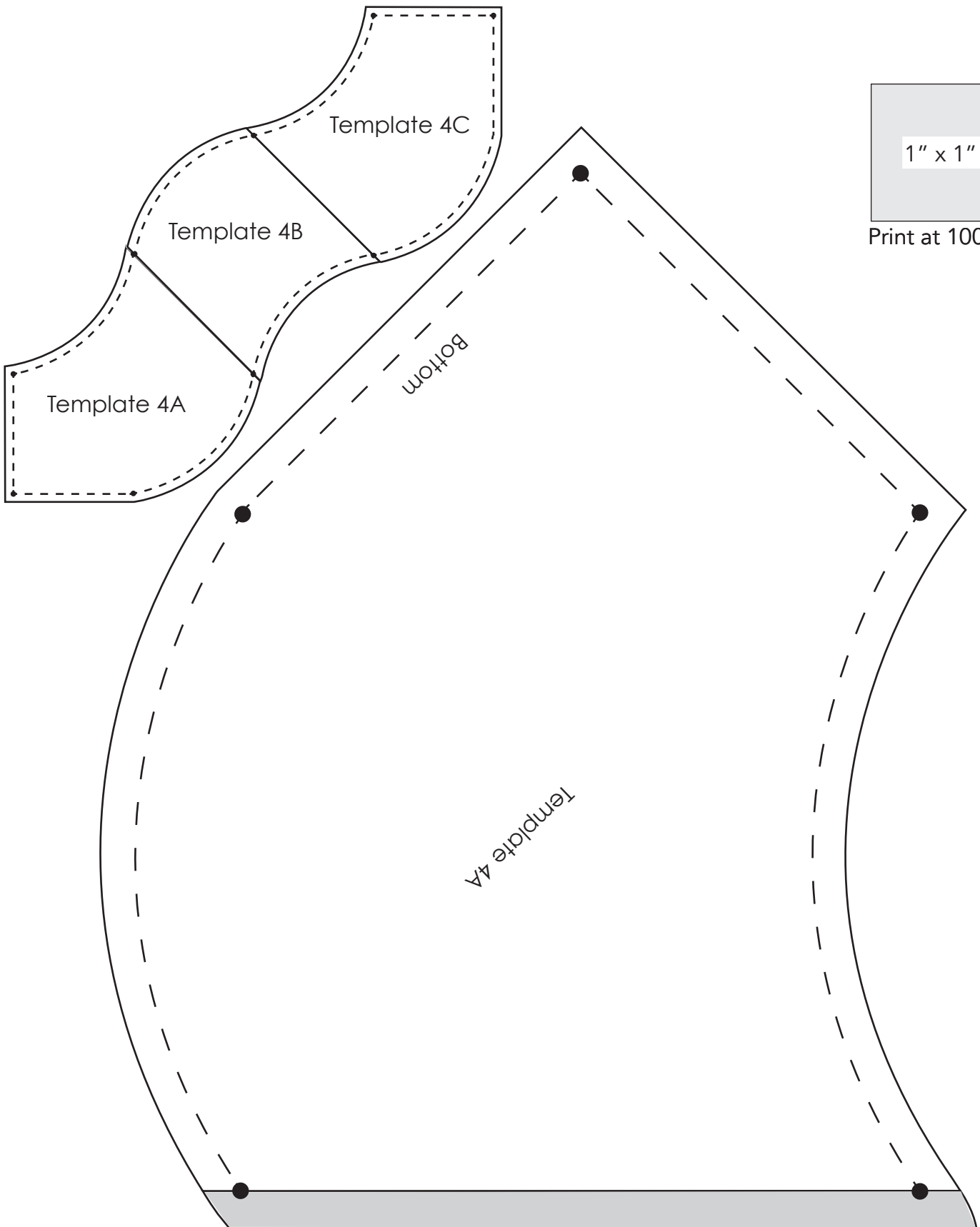


Cut out sections for templates 3, 4 and 5. Match the lines overlapping the shaded area as shown. Glue or tape the pieces together.

3B is found on page 8.

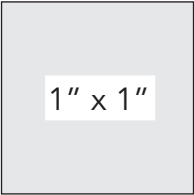
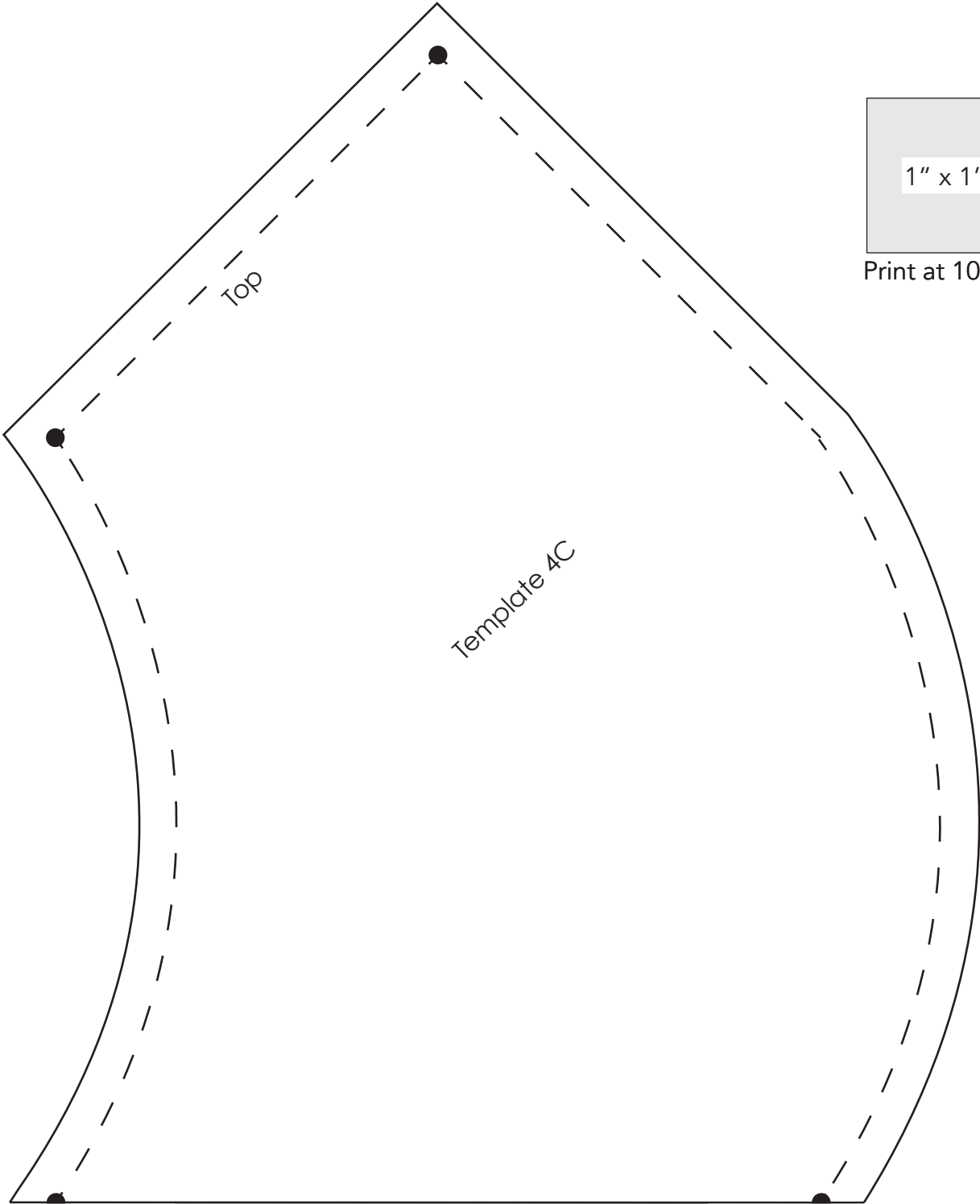


Ocean Currents





Ocean Currents

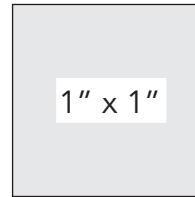


Print at 100%.



Ocean Currents

Template 5A is found
on page 13.



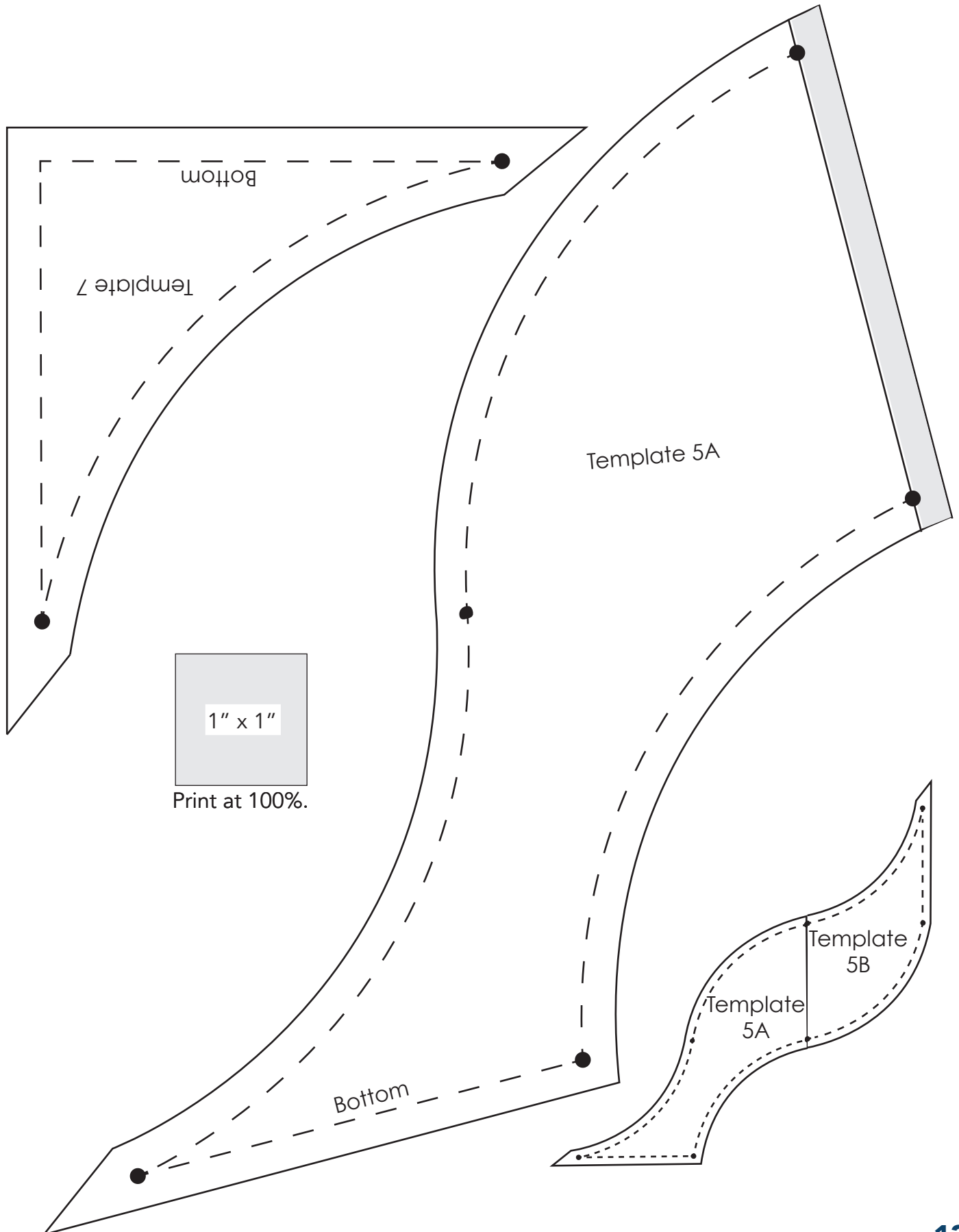
Print at 100%.

Template 5B

Template 6

Bottom

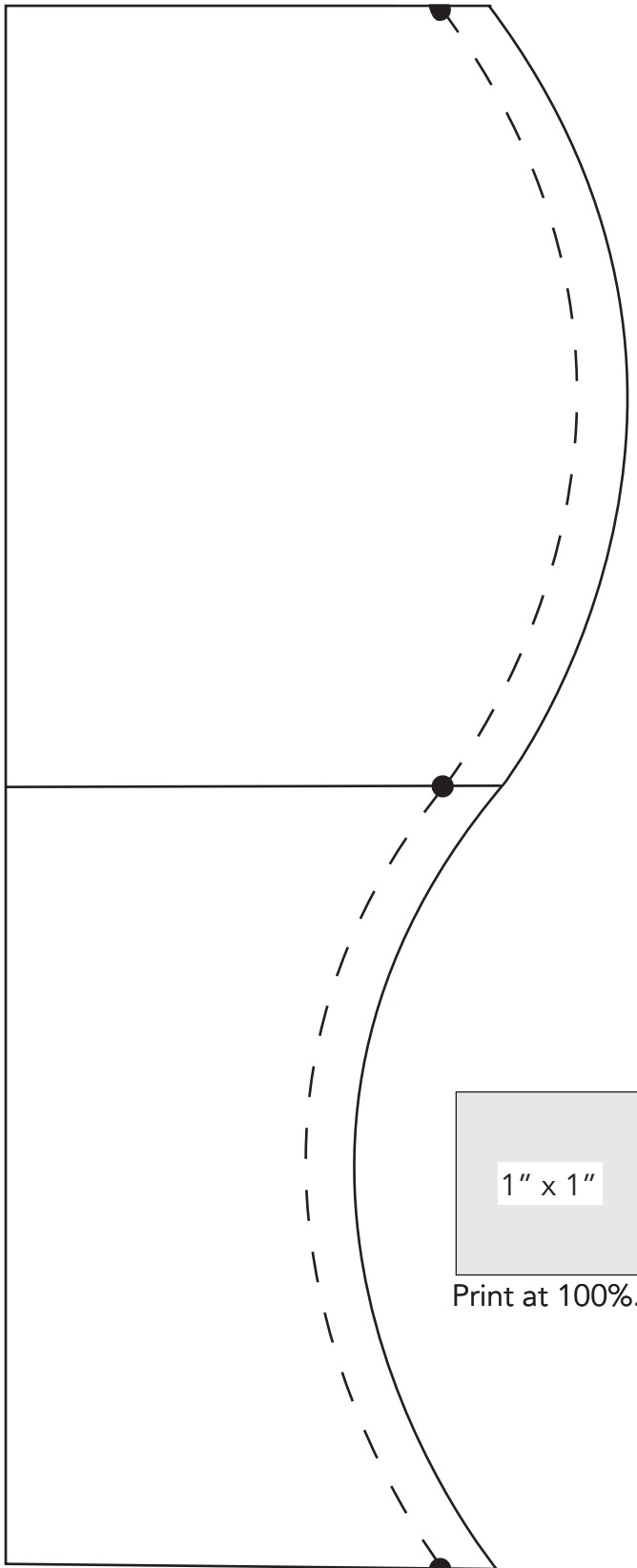
Ocean Currents



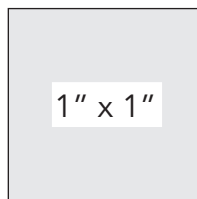
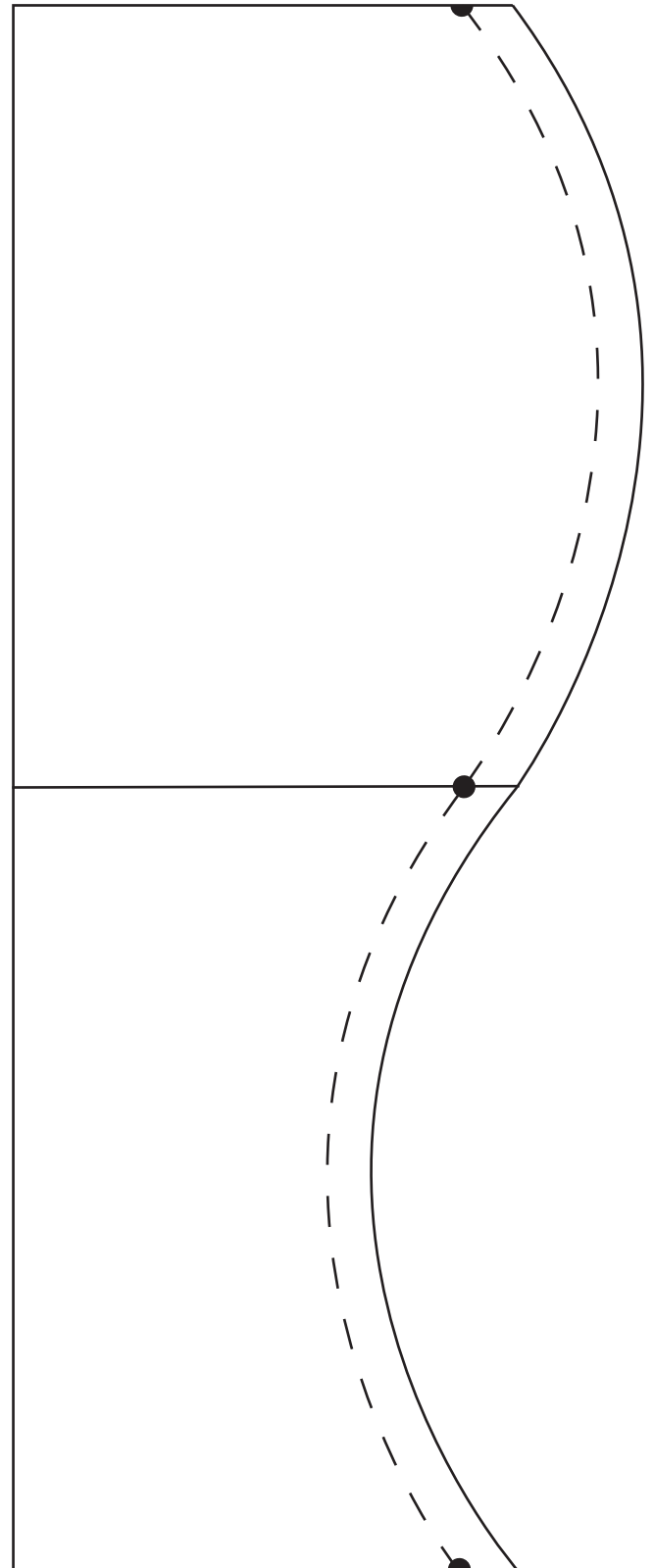


Ocean Currents

Top and Bottom
Border Template



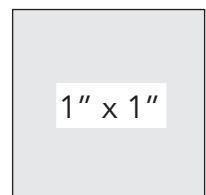
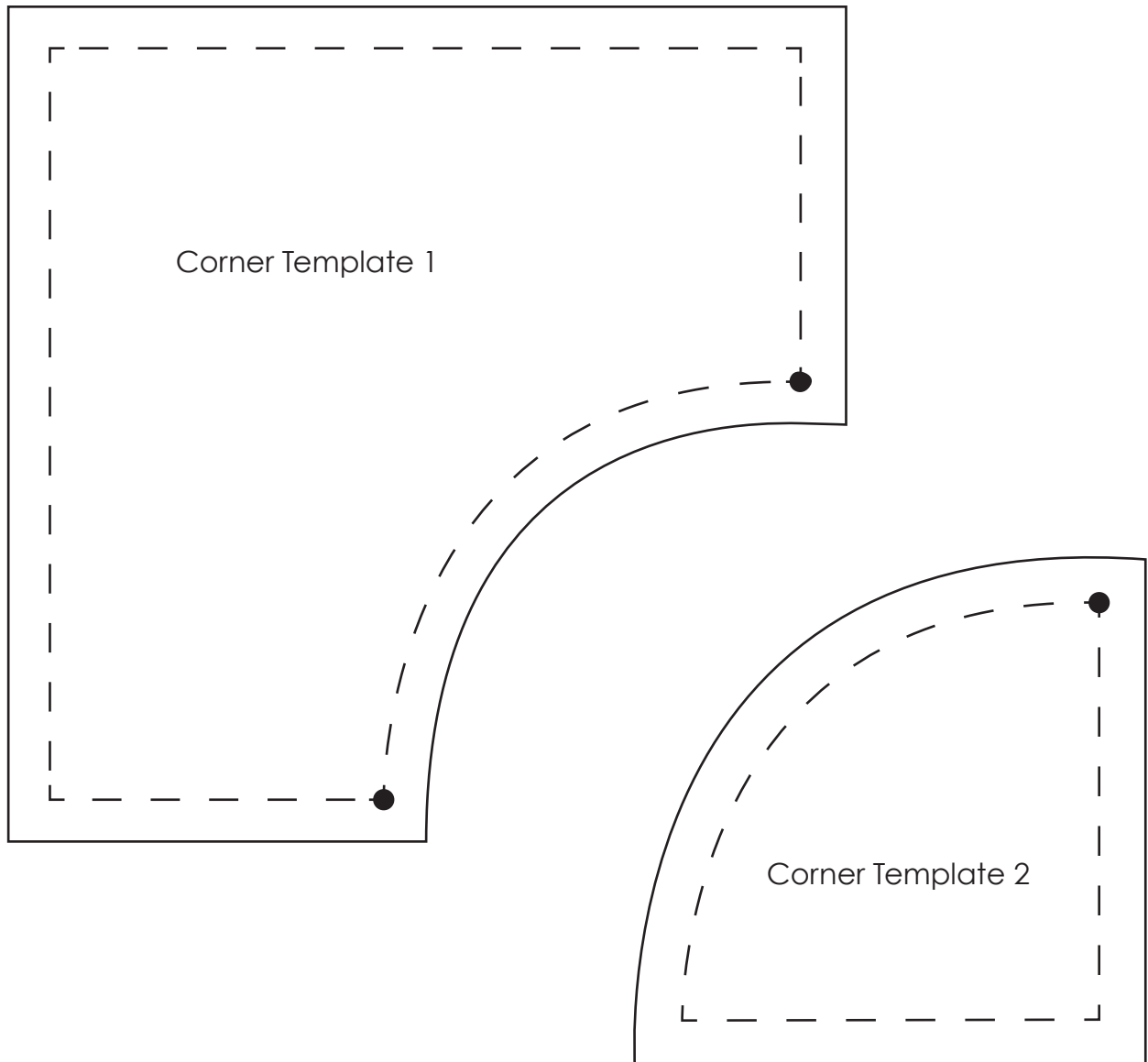
Side
Border Template



Print at 100%.



Ocean Currents



Print at 100%.