

michael miller FABRICS

# WAKE UP CALL

SIZE: 37-1/2" x 52-1/2" • LEVEL: INTERMEDIATE • PATTERN BY: MARSHA EVANS MOORE • FABRIC COLLECTION: COUNTY FAIR



THIS IS A DIGITAL REPRESENTATION OF THE QUILT TOP, FABRIC MAY VARY.

**PLEASE NOTE:** BEFORE BEGINNING YOUR PROJECT, CHECK FOR ANY PATTERN UPDATES AT [MICHAELMILLERFABRICS.COM](http://MICHAELMILLERFABRICS.COM)'S FREE PROJECTS SECTION.

p.212.704.0774 | [info@michaelmillerfabrics.com](mailto:info@michaelmillerfabrics.com) | [www.michaelmillerfabrics.com](http://www.michaelmillerfabrics.com)



# WAKE UP CALL



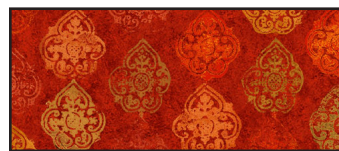
**FABRIC A**  
DCX9937\_Black  
3/8 yard



**FABRIC B**  
DCX9938\_Cream  
5/8 yard



**FABRIC C**  
DCX9940\_Sage  
5/8 yard



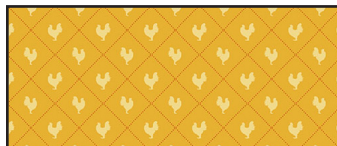
**FABRIC D**  
DCX9940\_Spice  
1/4 yard



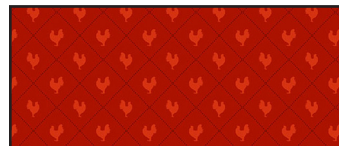
**FABRIC E**  
CX1065\_Lemon  
1/4 yard



**FABRIC F**  
DCX9941\_Black  
5/8 yard \*



**FABRIC G**  
DCX9942\_Honey  
1/2 yard



**FABRIC H**  
DCX9942\_Spice  
1/4 yard



**FABRIC I**  
DCX9946\_Red  
1 Panel

\* includes binding



# WAKE UP CALL

KEY	CUTTING INSTRUCTIONS
<b>A</b>	(10) 4-3/8" squares fussy cut over roosters.
<b>B</b>	(7) 2" x 42" strips; sew short ends together. Subcut (2) 2" x 50" borders, (2) 2" x 36" borders, (2) 2" x 35" borders and (2) 2" x 21" borders.
<b>C</b>	(11) 3-3/8" x 18" LOF strips; subcut (32) triangle patterns. Alternate long edge of triangles along length of strips to conserve fabric. (4) 3-5/8" squares; subcut 3-5/8" squares in half 1 time to make (8) triangles.
<b>D</b>	(1) 2-1/2" x 42" strip; subcut (8) 2-1/2" squares.
<b>E</b>	Sunrise patterns 1, 3, 5 and 7 and 1, 3 and 5 with patterns reversed.
<b>F</b>	(1) 6" x 42" strip; subcut (4) 6" x 4" rectangles, (16) 2-1/2" squares and (2) 17" x 1" rectangles. <b>FOR BINDING:</b> (5) 2-1/4" x 42"; sew short ends together.
<b>G</b>	(1) 6" x 42" strip; subcut (1) 6" x 17" rectangle, (8) 2-1/2" squares and (4) 2" squares. Sunrise patterns 2, 4 and 6 and 2, 4 and 6 with patterns reversed.
<b>H</b>	(1) 2" x 42" strip; subcut (4) 2" squares. 1 sun pattern. "Rise and Shine" letter patterns.
<b>I</b>	(1) 21" x 36" rectangle fussy cut over panel.
	Batting 46" x 61"

## ADDITIONAL MATERIALS

2-5/8 yards backing fabric

Sewing machine

Rotary cutter, ruler and mat

Thread to match fabrics

Basic sewing supplies

### Optional:

For raw edge appliqué: paper backed fusible webbing.

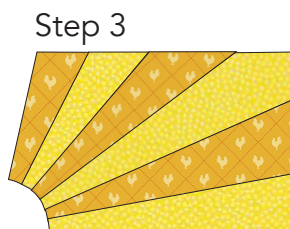
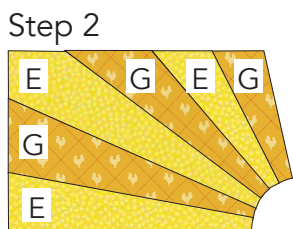
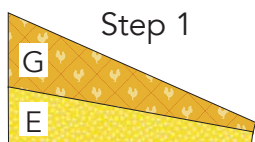
Lightweight interfacing to stabilize fussy cut squares.

Template plastic

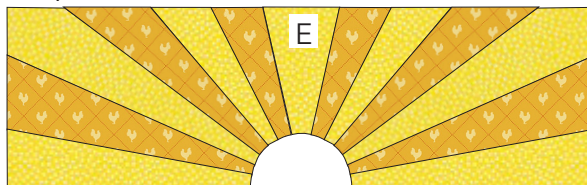
# WAKE UP CALL

## SUNRISE BORDER

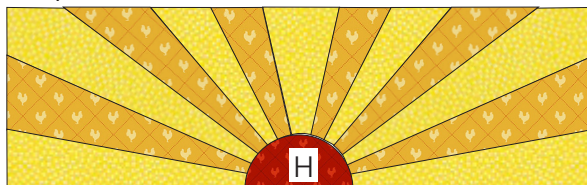
1. Sew **E** sunrise section 1 to **G** sunrise section 2.
2. Sew **E** sunrise section 3 to **G** sunrise section 2. Continue adding sunrise sections 4-6 in the same manner to make the sunrise unit. Make 1.
3. Following steps 1 and 2, join the reversed sunrise sections 1-6 in the same manner to make the reversed sunrise unit. Make 1.
4. Sew the sunrise unit and the reversed sunrise unit to sides of sunrise section 7. Make 1.
5. Sew the **H** sun to the curved edge of the sunrise unit to make a rectangle. Rectangle should measure 5-1/2" x 17" including seam allowance. Make 1.



Step 4

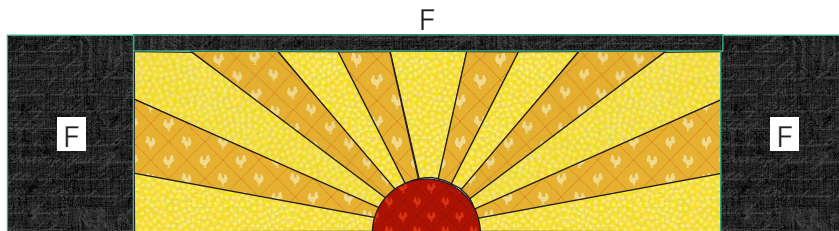


Step 5



Make 1

6. Sew (1) **F** 17" x 1" rectangle to the top of the sunrise. Sew (1) **F** 6" x 4" rectangle to each side of the sunrise to make the top border. Top border should measure 6" x 24" including seam allowances. Make 1.



Make 1

## RISE AND SHINE BORDER

7. Prepare the **H** "Rise and Shine" letters using your favorite raw edge appliqué technique. Pin or fuse the letters in place on (1) 5-1/2" x 17" **G** rectangle. Sew along the edges of the letters.



8. Sew (1) **F** 17" x 1" rectangle to the bottom of the **G** rectangle. Sew (1) **F** 6" x 4" rectangle to each side of the rectangle to make the bottom border. Bottom border should measure 6" x 24" including seam allowances. Make 1.



Make 1

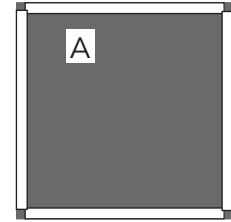
F



# WAKE UP CALL

## SIDE BORDERS

**Note:** If your **A** 4-3/8" squares are fussy cut so that there are bias edges, you may want to stabilize the seam lines. Cut 1/4" x 4-1/4" strips of lightweight interfacing and fuse to wrong side of squares along the edges.



9. Sew (1) **F** 2-1/2" square to (1) **G** 2-1/2" square to make (1) **F/G** unit.

10. Sew (1) **D** 2-1/2" square to (1) **F** 2-1/2" square to make (1) **D/F** unit.

11. Sew (1) **F/G** unit to (1) **D/F** unit to make a square unit. Trim edges evenly so square unit measures 4-3/8" square. Make 8.

Step 9



Step 10



Step 11



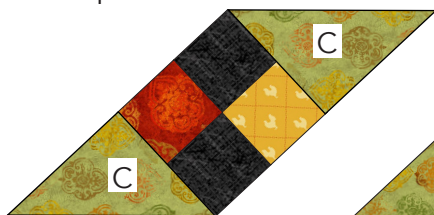
Make 8

12. Sew (2) **C** triangle template to opposite sides of (1) square unit to make a patchwork unit. Make 4.

13. Sew (2) **C** triangle template to opposite sides of (1) **A** 4-3/8" square to make a rooster unit. Note orientation of roosters. Make 3.

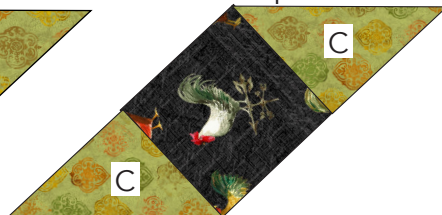
14. Sew (1) **C** 3-5/8" triangle to edge of **A** 4-3/8" square. Sew (1) **C** triangle template to opposite side of square to make a top and bottom unit. Note orientation of triangles. Make 1 each.

Step 12



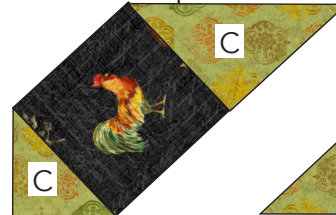
Make 4

Step 13

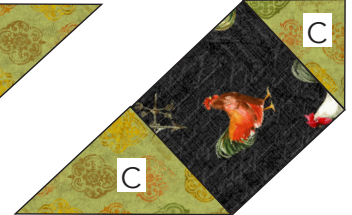


Make 3

Step 14

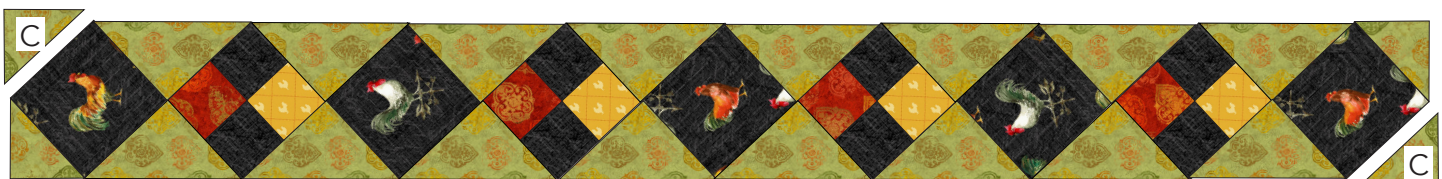


Make 1



Make 1

15. Sew together (4) patchwork units alternating with (3) rooster units. Sew top and bottom units to joined units. Sew (2) **C** 3-5/8" triangles to corners to complete the side borders. Border should measure 6" x 50" including seam allowances. Make 2.



Make 2

# WAKE UP CALL

**16.** Following the Quilt layout on page 6, sew (1) **B** 2" x 36" borders to each side of quilt. Sew (2) **G** 2" squares to ends of (2) **B** 2" x 21" borders. Sew borders to top and bottom of quilt.

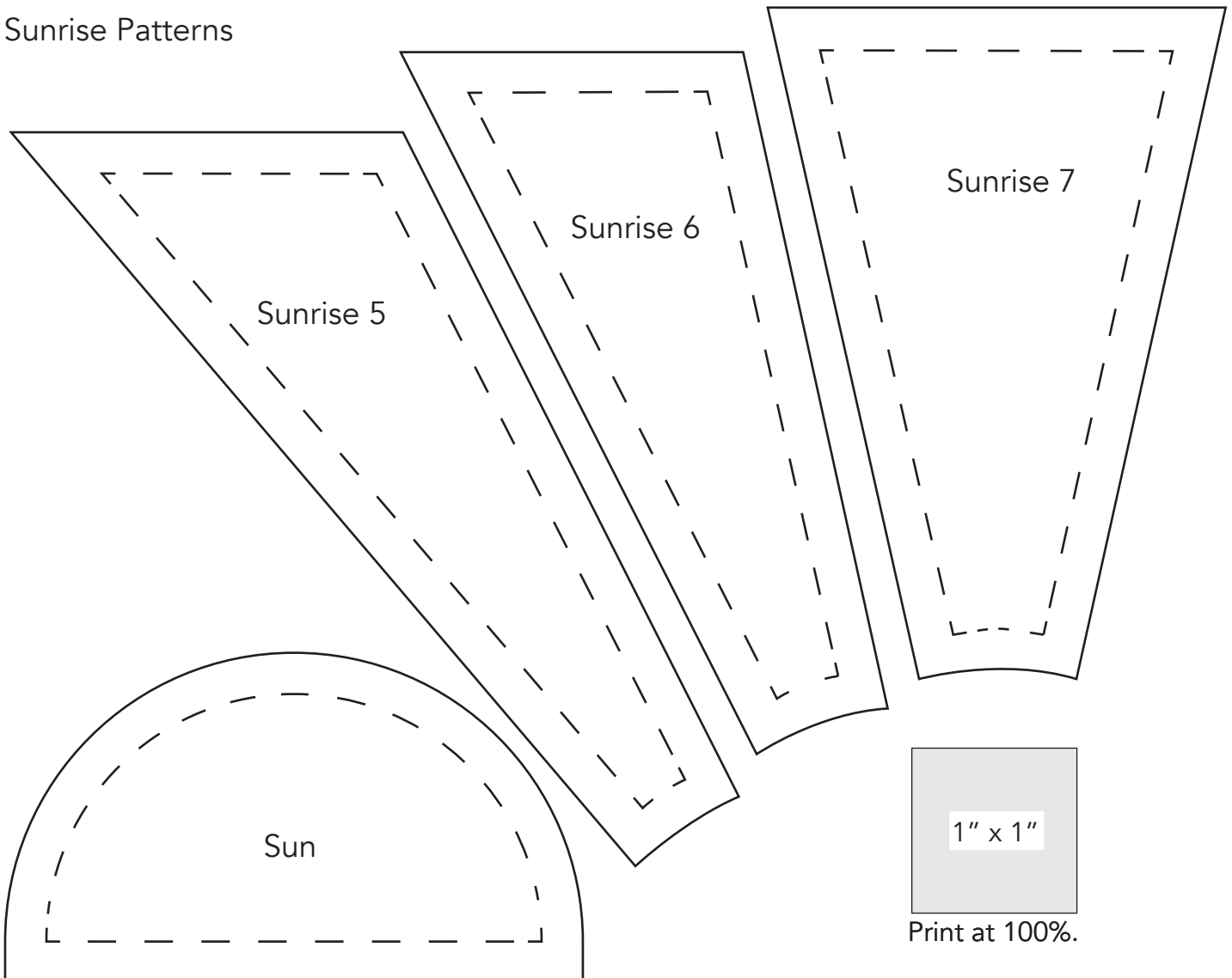
**17.** Sew sunrise border to top edge of quilt. Sew "Rise and Shine" Border to bottom edge of quilt.

**18.** Sew (1) patchwork side border to each side of quilt.

**19.** Sew (1) **B** 2" x 50" borders to each side of quilt. Sew (2) **H** 2" squares to each ends of (2) **B** 2" x 35" **B** borders. Sew borders to top and bottom of quilt.

**FINISHING:** Layer quilt top, batting and backing together to form quilt sandwich. Baste and quilt as desired. Bind using nine fabric **F** 2-1/4" strips.

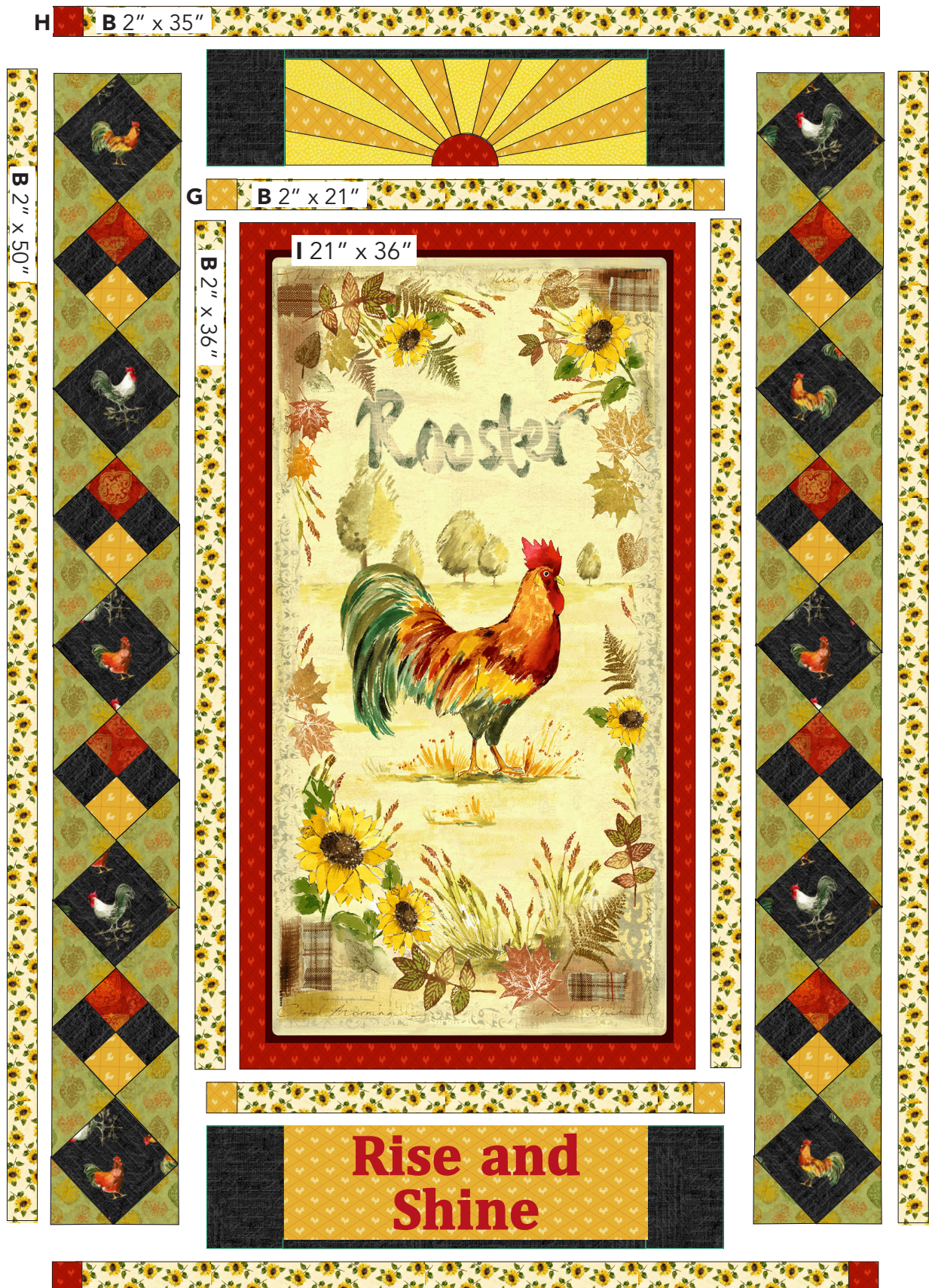
## Sunrise Patterns





# WAKE UP CALL

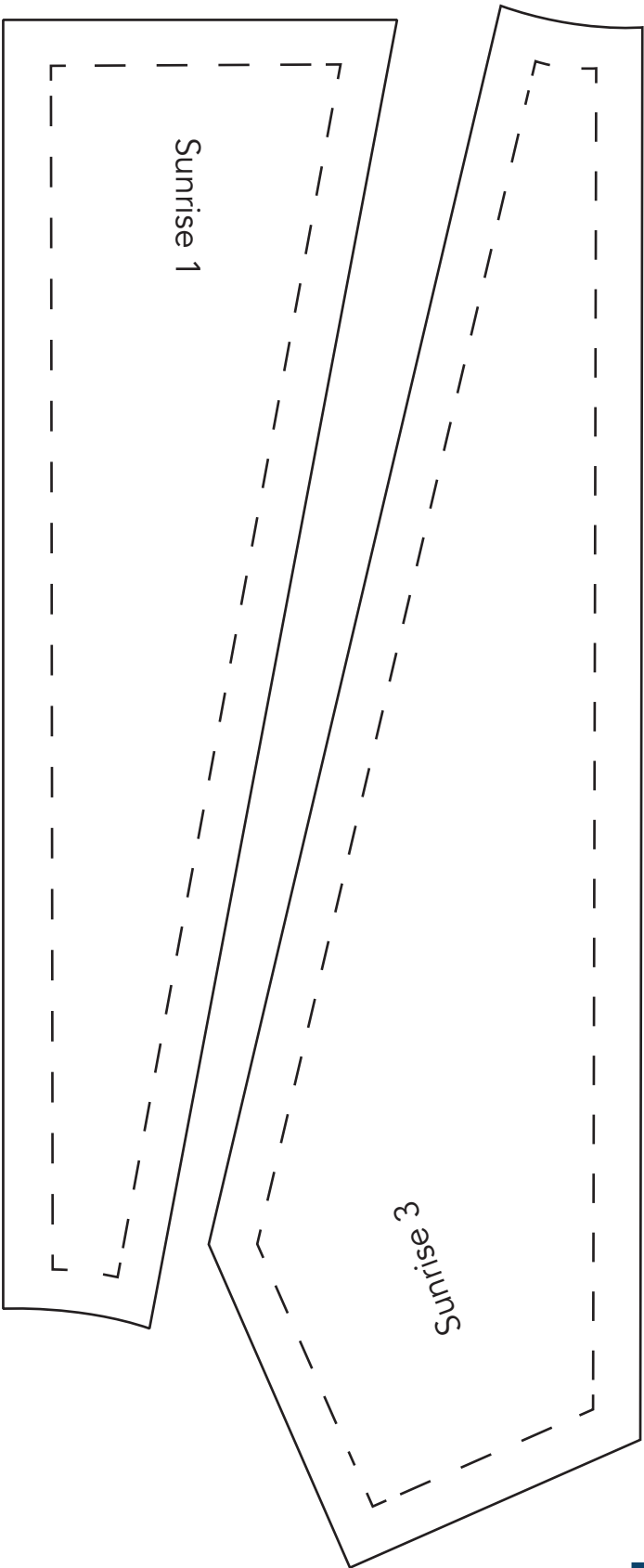
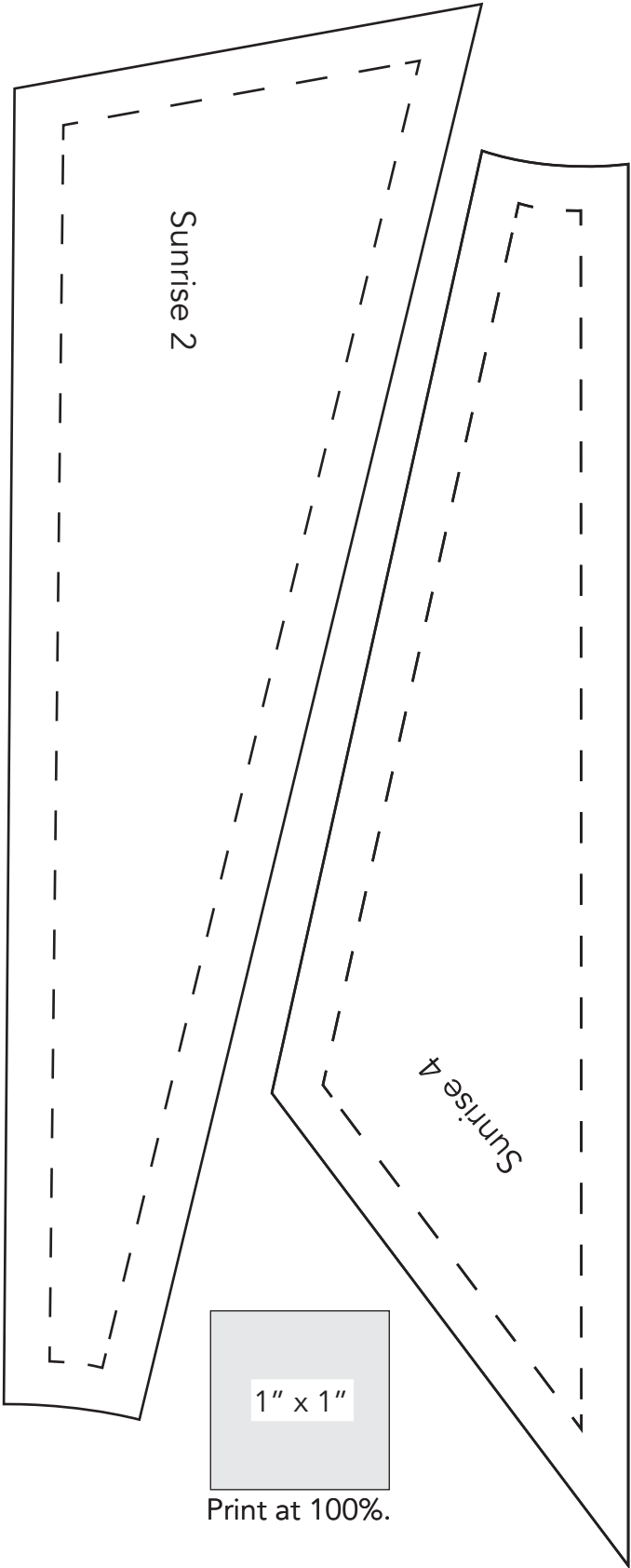
## Quilt Layout





# WAKE UP CALL

## Sunrise Patterns







# WAKE UP CALL

## Appliqué Patterns

