

michael miller FABRICS

# WHERE THE FAIRIES FLY

SIZE: 60" x 65" • LEVEL: BEGINNER • PATTERN BY: NATALIE CRABTREE • SONG OF THE FLOWER FAIRIES COLLECTION  
PATTERN AVAILABLE ON: [WWW.MICHAELMILLERFABRICS.COM](http://WWW.MICHAELMILLERFABRICS.COM)



THIS IS A DIGITAL REPRESENTATION OF THE QUILT TOP, FABRIC MAY VARY.

**PLEASE NOTE:** BEFORE BEGINNING YOUR PROJECT, CHECK FOR ANY PATTERN UPDATES AT [MICHAELMILLERFABRICS.COM](http://MICHAELMILLERFABRICS.COM)'S FREE PROJECTS SECTION.

p.212.704.0774 | [info@michaelmillerfabrics.com](mailto:info@michaelmillerfabrics.com) | [www.michaelmillerfabrics.com](http://www.michaelmillerfabrics.com)

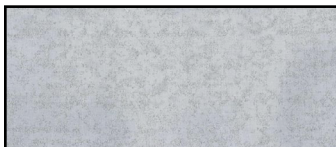


# WHERE THE FAIRIES FLY



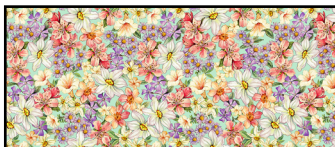
**FABRIC A**

Fairy Frost  
CM0376  
Glimmer  
1/2 yard



**FABRIC B**

Fairy Frost  
CM0376  
Platinum  
1/8 yard



**FABRIC C**

DDC9273  
Garden of the Fairies  
Green  
1 yard



**FABRIC D**

DDC9273  
Garden of the Fairies  
Pink  
3/4 yard  
*(Includes binding)*



**FABRIC E**

DDC9274  
Magic Tones  
Green  
7/8 yard



**FABRIC F**

DDC9274  
Magic Tones  
Fuchsia  
7/8 yard



**FABRIC G**

DDC9270  
Wlsh Dream Glow  
Pink  
1 Panel



# WHERE THE FAIRIES FLY

## Additional supplies needed:

68" x 73" piece of batting

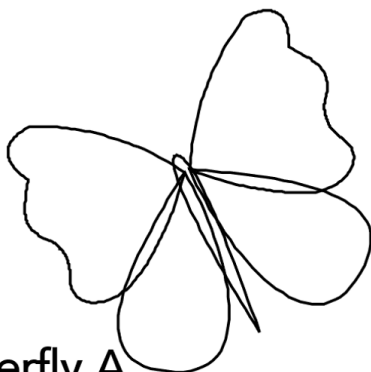
Backing: 4 yards

Fusible Web of your choice for fusible applique

Basic Sewing Supplies

### FUSIBLE WEB CUTTING INTRUCTIONS

- Cut out each printed template from the template pages of the pattern. Printed applique templates are not reversed. Place templates **wrong side up, printed side down** on the smooth side of fusible web. Trace the following:
  - (3) Butterfly A Top Wing Sets
  - (3) Butterfly A Bottom Wing Sets
  - (3) Butterfly A Bodies
  - (2) Butterfly B Top Wings
  - (2) Butterfly B Bottom Wings
  - (2) Butterfly B Bodies
- Next, place the Butterfly B templates onto the smooth side of fusible web **printed side up, wrong side down**. Trace the following for mirror image Butterfly B applique:
  - (1) Butterfly B Top Wing
  - (1) Butterfly B Bottom Wing
  - (1) Butterfly B Body
- Cut out each fusible web template. Cutting Instructions for Fabrics A-G indicate which templates to fuse to each fabric.



Butterfly A



Butterfly B



Butterfly B Reversed

# WHERE THE FAIRIES FLY

KEY	FUSIBLE WEB CUTTING INSTRUCTIONS
<b>A</b>	<ul style="list-style-type: none"> <li>Cut (4) 4" x WOF strips. Subcut (38) 4" squares for Pieced Border 2.</li> </ul>
<b>B</b>	<ul style="list-style-type: none"> <li>Use yardage to fuse (3) Butterfly A Bodies and (3) Butterfly B Bodies onto the wrong side of fabric. Cut out each individual applique template on the traced line and set aside for further instruction.</li> </ul>
<b>C</b>	<ul style="list-style-type: none"> <li>Cut (1) 5 ½" x WOF strip. Subcut (4) 5 ½" squares for Pieced Border 2.</li> <li>Cut (7) 3 ½" x WOF strips. Subcut (76) 3 ½" squares; cut each square once diagonally to create (152) HST for Pieced Border 2.</li> </ul>
<b>D</b>	<ul style="list-style-type: none"> <li>Cut (7) 2 ¼" x WOF strips for binding.</li> <li>Use remaining yardage to fuse (3) sets of Butterfly A Top Wings and (3) Butterfly B Top Wings onto the wrong side of fabric. Cut out each individual applique template on the traced line and set aside for further instruction.</li> </ul>
<b>E</b>	<ul style="list-style-type: none"> <li>Cut (5) 5 ½" x WOF strips. Sew strips end to end using a diagonal seam to create a long strip. Trim the following for Border 1:               <ul style="list-style-type: none"> <li><b>First</b>, cut (2) 4 ½" x 45 ½" strips for the Border 1 top/bottom borders. <i>(Please note the difference in width. Top/Bottom borders are 4 ½".)</i></li> <li><b>Last</b>, cut (2) 5 ½" x 42 ½" strips for the Border 1 side borders.</li> </ul> </li> </ul>
<b>F</b>	<ul style="list-style-type: none"> <li>Cut (8) 3" x WOF strips. Sew (2) strips end to end using a diagonal seam to create a long strip. Repeat (4) times. Trim the following:               <ul style="list-style-type: none"> <li>From (2) strips trim (2) 3" x 60 ½" for the Border 3 top/bottom borders.</li> <li>From (2) strips trim (2) 3" x 60 ½" for the Border 3 side borders.</li> </ul> </li> <li>Use remaining yardage to fuse (3) sets of Butterfly A Bottom Wings and (3) Butterfly B Bottom Wings onto the wrong side of fabric. Cut out each individual applique template on the traced line and set aside for further instruction.</li> </ul>
<b>G</b>	<ul style="list-style-type: none"> <li>Trim panel to measure 35 ½" x 42 ½" unfinished</li> </ul>

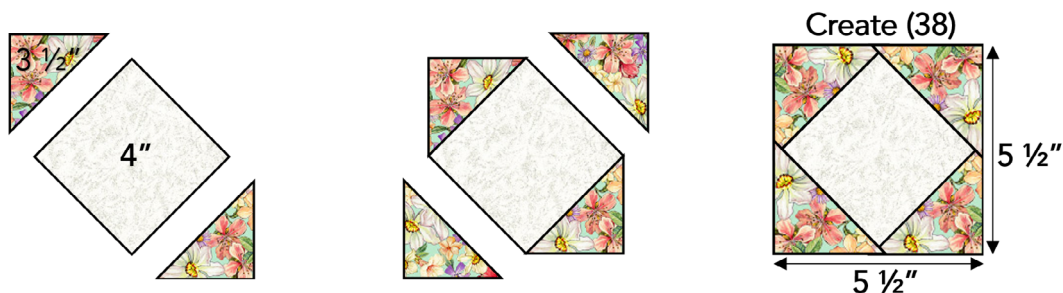
## Pieced Border 2 Instructions:

(All seams are ¼" unless otherwise noted.)

- Create square-in-a-square units using (4) Fabric C 3 ½" HST and (1) Fabric A 4" square. Sew (2) Fabric C HST onto (2) opposite sides of the Fabric A square, right sides together and edges aligned. Press seams outward and away from Fabric A.
- Repeat the same piecing process on the (2) remaining sides of Fabric A to complete the square-in-a-square unit.
- Trim to measure 5 ½" x 5 ½" unfinished. Repeat to create (38) square-in-a-square units.



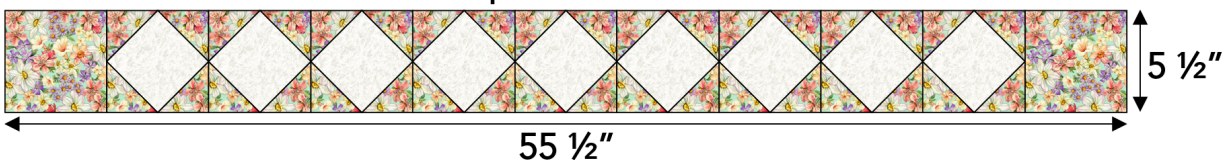
# WHERE THE FAIRIES FLY



4. Sew (9) square-in-a-square units together to create a pieced border as shown. Press seams open to reduce bulk.
5. Sew (1) Fabric C 5 1/2" square onto either end of the pieced border to create the Pieced Border 2 top/bottom borders. Press seams toward the Fabric C squares to complete. The top/bottom Pieced Border 2 should measure 5 1/2" x 55 1/2" unfinished. Create (2) borders.



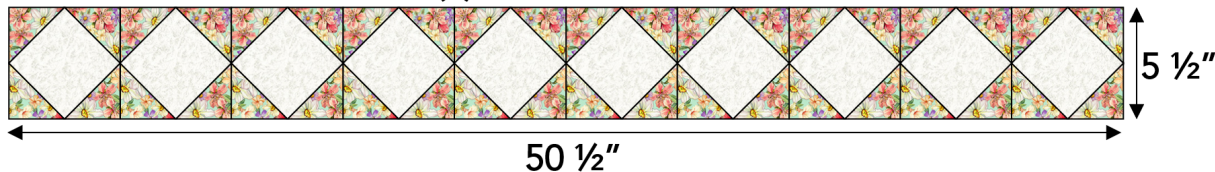
**Create (2) – Top/Bottom Pieced Border 2**



6. Sew (10) square-in-a-square units together to create a pieced border as shown. Press seams open to reduce bulk to complete the Pieced Border 2 side borders. The side Pieced Border 2 should measure 5 1/2" x 50 1/2" unfinished. Create (2) borders.



**Create (2) – Side Pieced Border 2**



## Quilt Assembly:

7. Ensure that the panel measures 35 1/2" x 42 1/2" unfinished before sewing. Attach Border 1 to the panel. Attach the 5 1/2" x 42 1/2" borders to the sides of the panel first, then attach the 4 1/2" x 45 1/2" borders to the top/bottom of the panel. Press seams outward toward the borders.

# WHERE THE FAIRIES FLY



8. Begin applique process by removing the paper from the glue side of each fusible applique template.
9. Begin placing Butterflies A and B as shown, layering the applique templates. For Butterflies A and B the bottom wings are placed first, the top wings second, and the bodies last for a layered appearance. See diagrams for reference. Ensure that butterflies are **at least 1/4" away** from the edges of Border 1.
10. Once you are satisfied with the placement of each butterfly, pin in place thoroughly and move the quilt to the ironing station.
11. Iron in place thoroughly following fusible web manufacturers instructions.
12. Stitch around each individual applique using a thread color and decorative stitch of your choice to secure. Press for a nice finish.





# WHERE THE FAIRIES FLY

13. Attach the pieced Border 2 measuring  $5\frac{1}{2}'' \times 50\frac{1}{2}''$  to the sides of the quilt as shown. Press toward Border 1. Attach the pieced Border 2 measuring  $5\frac{1}{2}'' \times 55\frac{1}{2}''$  to the top/bottom of the quilt as shown. Press toward Border 1.
14. Attach Border 3 to the quilt. Attach (1) Fabric F  $3'' \times 60\frac{1}{2}''$  border to each side of the quilt first. Then attach (1) Fabric F  $3'' \times 60\frac{1}{2}''$  border to the top/bottom of the quilt. Press seams outward toward the borders to complete. Completed quilt should measure  $60\frac{1}{2}'' \times 65\frac{1}{2}''$  unfinished.



## Finishing the Quilt:

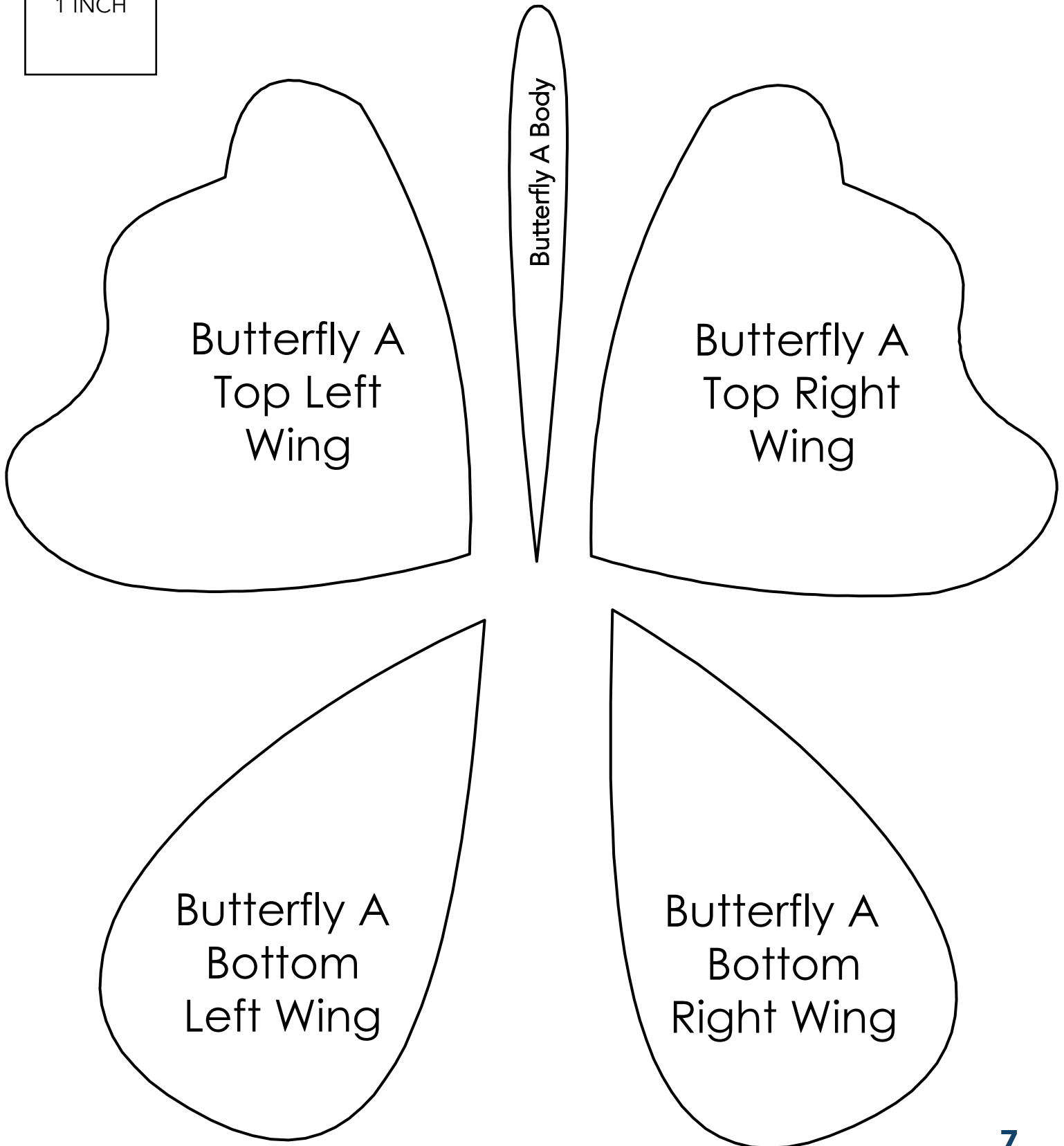
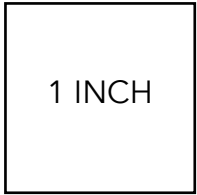
15. Sandwich quilt with batting and backing. Baste quilt layers together using your preferred method. Quilt as desired.
16. Create binding by sewing (7) Fabric D  $2\frac{1}{4}'' \times$  WOF strips together end to end using a diagonal seam to create a long strip. Trim seams to  $\frac{1}{4}''$  and press.
17. Press the long strip in half widthwise, with wrong sides together. Attach and finish binding using your preferred method.





# WHERE THE FAIRIES FLY

## TEMPLATES





# WHERE THE FAIRIES FLY

## TEMPLATES

