

michael miller FABRICS

GIRLS TRIP

SIZE: 77"W x 78 1/2"H • LEVEL: INTERMEDIATE • PATTERN BY: NATALIE CRABTREE • BUNGALOW FABRIC COLLECTION
PATTERN AVAILABLE ON: WWW.MICHAELMILLERFABRICS.COM



THIS IS A DIGITAL REPRESENTATION OF THE QUILT TOP, FABRIC MAY VARY.

PLEASE NOTE: BEFORE BEGINNING YOUR PROJECT, CHECK FOR ANY PATTERN UPDATES AT MICHAELMILLERFABRICS.COM'S FREE PROJECTS SECTION.

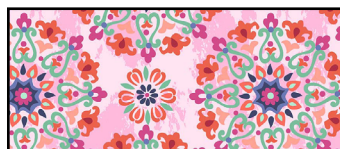
p.212.704.0774 | info@michaelmillerfabrics.com | www.michaelmillerfabrics.com

GIRLS TRIP



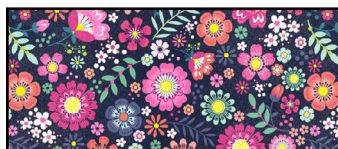
FABRIC A

Cotton Couture
SC_5333 Bright White
3 1/4 yards



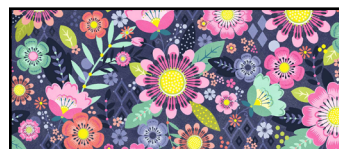
FABRIC B

CX9500
Go Global Pink
1/2 yard



FABRIC C

CX9504
Flirt Navy
1/2 yard



FABRIC D

CX9499
Festival Navy
1 7/8 yards



FABRIC E

CX9501
Trunk Show Navy
1/2 yard



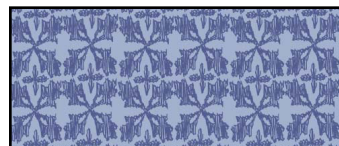
FABRIC F

CX9505
Caravan Calico Berry
1 1/8 yards
(includes binding)



FABRIC G

CX9508
Around and Around
Seafoam
3/4 yard



FABRIC H

CX9507
Twinkling Geo Blue
3/4 yard



FABRIC I

CX9505
Caravan Calico Coral
1/2 yard



FABRIC J

CX9508
Around and Around
Peach
1/4 yard



FABRIC K

CX9508
Around and Around
Blossom
1/4 yard



FABRIC L

CX9506
Blossom Block Print
Lime
3/8 yard



FABRIC M

CX9507
Twinkling Geo Mint
1/2 yard



FABRIC N

CX6699
Hash Dot Taupe
1/4 yard



FABRIC O

CX9502
All Roads Blossom
5/8 yard

BACKING

5 yards

GIRLS TRIP

KEY	CUTTING INSTRUCTIONS
A	<ul style="list-style-type: none"> • Cut (8) 1 ½" x WOF strips. Piece strips for length using diagonal seams. From the long strip, subcut the following: <ul style="list-style-type: none"> ○ (2) 1 ½" x 68" Side Border 1 strips. ○ (2) 1 ½" x 68 ½" Top/Bottom Border 1 strips. • Cut (15) 2" x WOF strips. Subcut the following: <ul style="list-style-type: none"> ○ (6) 2" x 30 ½" strips. ○ (8) 2" x 29" strips. ○ (48) 2" squares. ○ (8) 2" x 5" rectangles. ○ (4) 2" x 9 ½" rectangles. • Cut (6) 3 ½" x WOF strips. Subcut the following: <ul style="list-style-type: none"> ○ (8) 3 ½" x 5" rectangles. ○ (8) 3 ½" x 12 ½" rectangles. ○ (8) 3 ½" x 9 ½" rectangles. • Cut (3) 5" x WOF strips. Subcut the following: <ul style="list-style-type: none"> ○ (8) 5" squares. ○ (4) 5" x 12 ½" rectangles. • Cut (1) 5 ½" x WOF strip. Subcut (4) 5 ½" squares. • Cut (7) 3 ½" x WOF strips. Subcut (80) 3 ½" squares.
B - E	<p><i>There will be Fabric D yardage left. Set aside for the next cutting instruction.</i></p> <ul style="list-style-type: none"> • Cut (1) 16" x WOF strip. Subcut the following: <ul style="list-style-type: none"> ○ (1) 16" square; cut the square once diagonally to make (2) HST. (One HST will be unused.) ○ (2) 3 ½" squares. ○ (8) 2" squares.
D	<p><i>From the remainder of Fabric D yardage.</i></p> <ul style="list-style-type: none"> • Cut (8) 3 ½" x WOF strips. Piece strips for length using diagonal seams. From the long strip, subcut the following: <ul style="list-style-type: none"> ○ (2) 3 ½" x 73" Side Border 3 strips. ○ (2) 3 ½" x 77 ½" Top/Bottom Border 3 strips. • Cut (2) 6 ½" x WOF strips. Subcut the following: <ul style="list-style-type: none"> ○ (1) 6 ½" x 8" rectangle for Quilt Assembly. ○ (20) 6 ½" x 3 ½" rectangles for Flying Geese Sashing Assembly.
F - I	<p><i>There will be yardage left from Fabrics F, G and H. Set aside for the next cutting instructions.</i></p> <ul style="list-style-type: none"> • Cut (2) 2" x WOF strips. Subcut the following: <ul style="list-style-type: none"> ○ (1) 2" x 21 ½" strip. ○ (1) 2" x 12 ½" strip. ○ (6) 2" x 3 ½" rectangles. ○ (4) 2" squares.



GIRLS TRIP

F - I	<p>(CONTINUED FROM PAGE 2)</p> <ul style="list-style-type: none"> • Cut (1) 7" x WOF strips. Subcut the following: <ul style="list-style-type: none"> ◦ (1) 7" square; cut the square once diagonally to make (2) HST. ◦ (1) 5 ½" square; cut the square once diagonally to make (2) HST. ◦ (1) 5 ½" square.
F	<p>From the remainder of Fabric F yardage.</p> <ul style="list-style-type: none"> • Cut (9) 2 ¼" x WOF strips for binding.
G	<p>From the remainder of Fabric G yardage.</p> <ul style="list-style-type: none"> • Cut (2) 6 ½" x WOF strips. Subcut (20) 6 ½" x 3 ½" rectangles for Flying Geese Sashing Assembly.
H & J - L	<p>From the remainder of Fabric H yardage and Fabrics J – L. There will be Fabric L yardage left. Set aside for the next cutting instruction.</p> <ul style="list-style-type: none"> • Cut (1) 5" x WOF strip. Subcut (1) 5" x 15 ½" rectangle for block assembly.
L	<p>From the remainder of Fabric L yardage.</p> <ul style="list-style-type: none"> • Cut (1) 2" x WOF strip. Subcut (8) 2" squares for block assembly. • Cut (1) 3 ½" x WOF strip. Subcut (8) 3 ½" squares for block assembly.
M	<ul style="list-style-type: none"> • Cut (2) 5" x WOF strips. Subcut (4) 5" x 12 ½" rectangles. • Cut (1) 2" x WOF strip. Subcut (8) 2" x 3 ½" rectangles. • Cut (1) 3 ½" x WOF strip. Subcut (8) 3 ½" squares.
N	<ul style="list-style-type: none"> • Cut (1) 2" x WOF strip. Subcut (8) 2" squares. • Cut (1) 5" x WOF strip. Subcut (8) 5" x 3 ½" rectangles.
O	<ul style="list-style-type: none"> • Cut (8) 2" x WOF strips. Piece strips for length, matching the strip print. From the long strip, subcut the following: <ul style="list-style-type: none"> ◦ (2) 2" x 70" Side Border 2 strips. ◦ (2) 2" x 71 ½" Top/Bottom Border 2 strips.

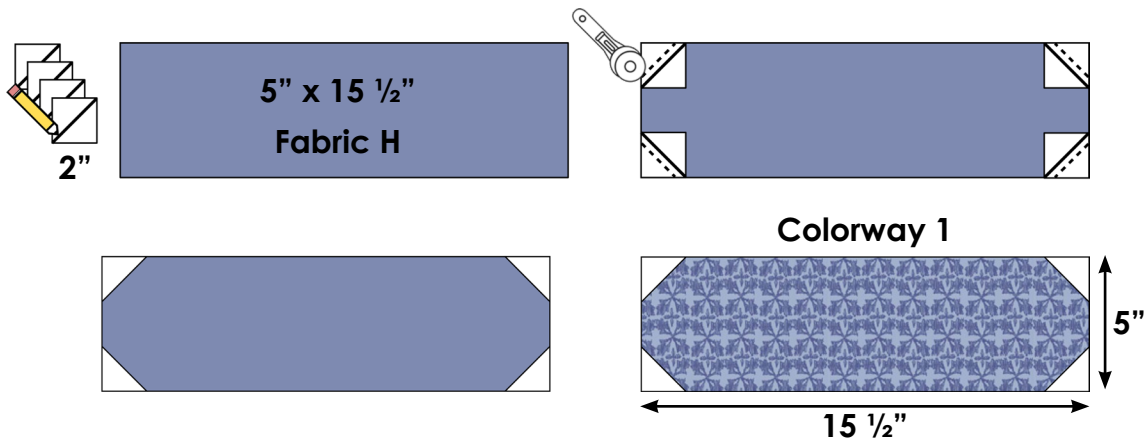
GIRLS TRIP

Piecing Instructions:

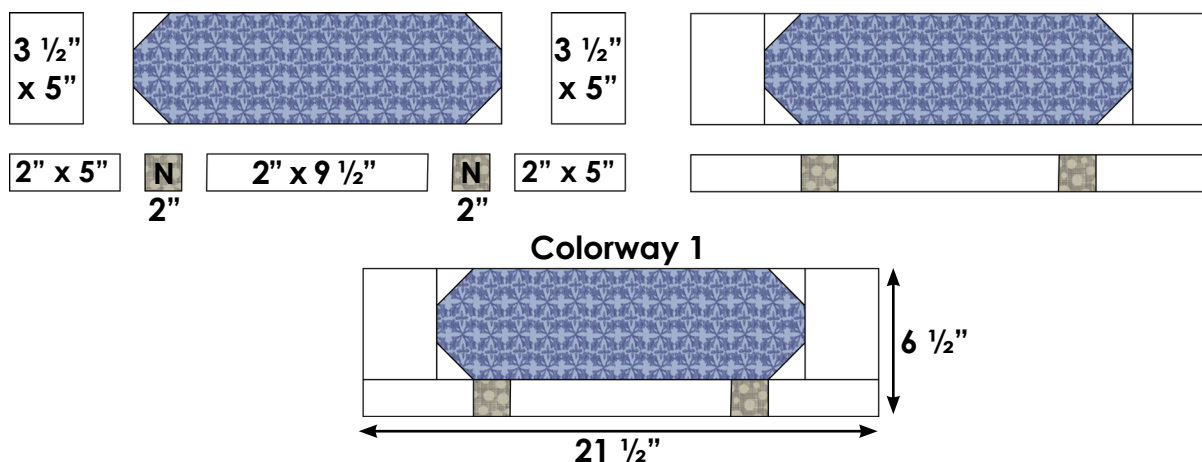
(Blocks are created using (4) colorways. Detailed assembly instructions and diagrams are given for Colorway 1, with written instructions and completed blocks showing accurate fabric combinations for Colorways 2-4. Use the Colorway 1 instructions as a guide when piecing Colorways 2-4.)

Car Top Carrier Assembly:

1. Draw a diagonal line on the wrong side of (4) Fabric A 2" squares.
2. Place (1) Fabric A square onto each corner of (1) Fabric H 5" x 15 1/2" rectangle right sides together as shown.
3. Sew along the drawn diagonal lines. Trim the excess corner fabric to a 1/4". Press toward the corners to complete stitch and flip techniques. Car top carrier should measure 5" x 15 1/2" unfinished at this step.



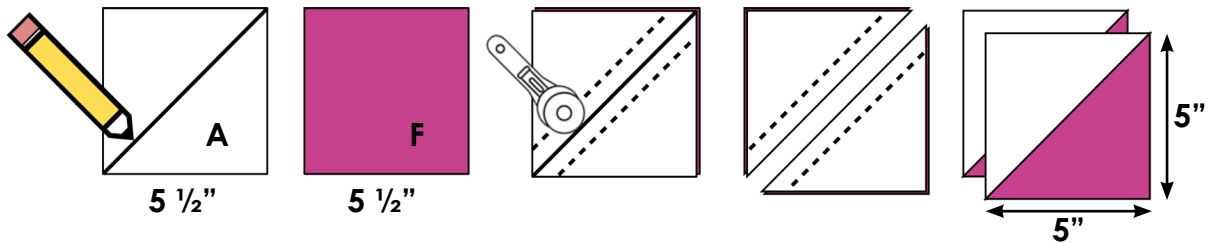
4. Gather the car top carrier, (2) Fabric A 3 1/2" x 5" rectangles, (2) Fabric A 2" x 5" rectangles, (1) Fabric A 2" x 9 1/2" rectangle and (2) Fabric N 2" squares. Arrange as shown.
5. Sew the car top carrier together using pins to help align seams. Completed car top carrier should measure 6 1/2" x 21 1/2" unfinished.



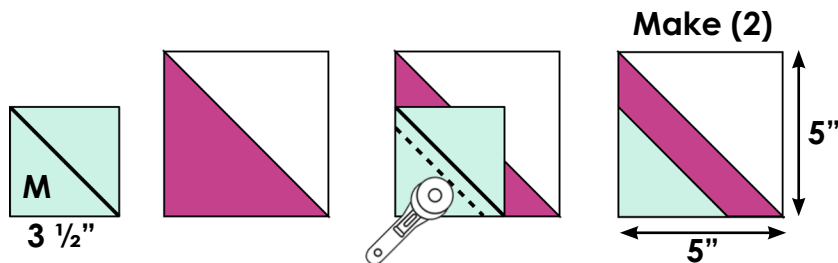
GIRLS TRIP

Windshield Assembly:

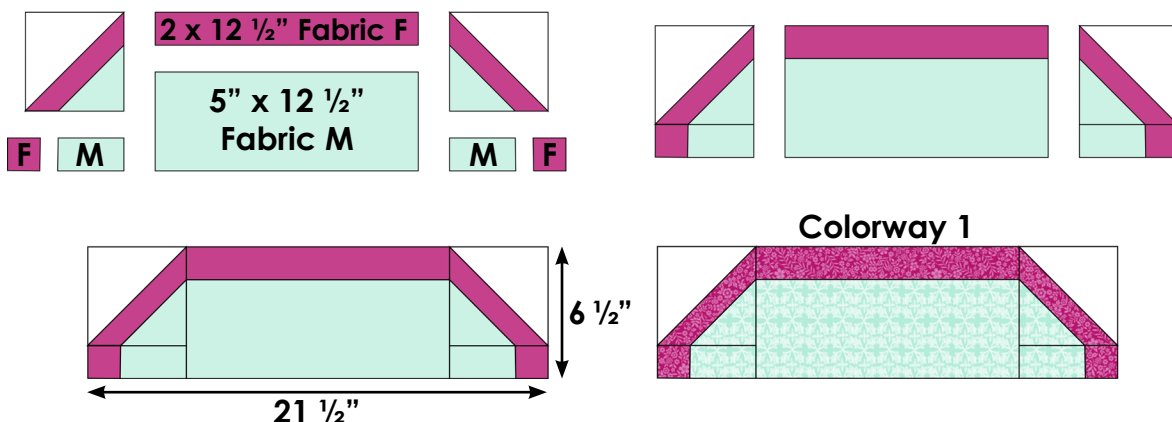
6. Draw a diagonal line on the wrong side of (1) Fabric A 5 ½" square.
7. Place the Fabric A square with (1) Fabric F 5 ½" square, right sides together and edges aligned.
8. Sew a ¼" away from either side of the drawn diagonal line.
9. Cut along the drawn line, separating the two sides and creating (2) HST units. Trim the Fabric A/F HST units to measure 5" x 5" unfinished.



10. Draw a diagonal line on the wrong side of (2) Fabric M 3 ½" squares.
11. Place each Fabric M square onto the Fabric F corner of both HST units, right sides together.
12. Repeat stitch and flip techniques as described in the car top carrier instructions. Windshield units should measure 5" x 5" unfinished at this step.



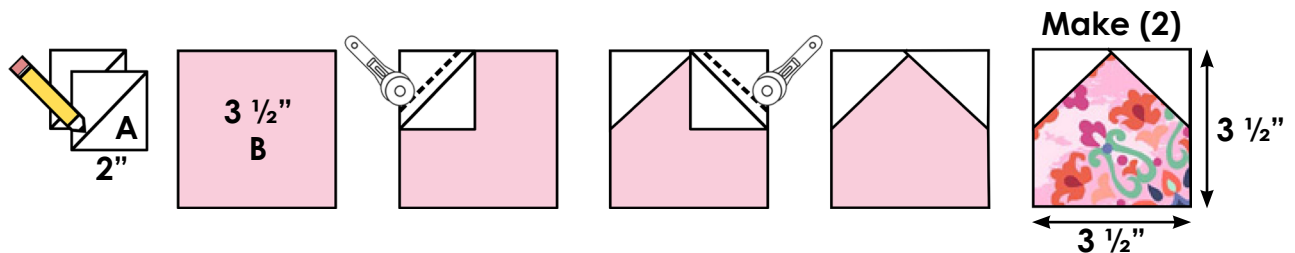
13. Gather (2) windshield units, (2) Fabric F 2" squares, (1) Fabric F 2" x 12 ½" rectangle, (2) Fabric M 2" x 3 ½" rectangles and (1) Fabric M 5" x 12 ½" rectangle. Arrange as shown.
14. Sew the windshield together using pins to help align seams. Completed windshield should measure 6 ½" x 21 ½" unfinished.



GIRLS TRIP

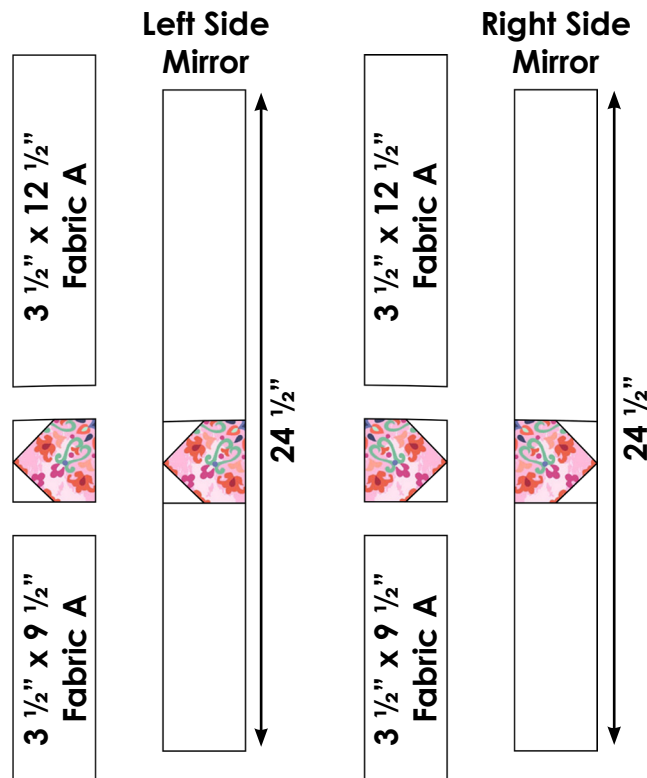
Side Mirror Assembly:

15. Draw a diagonal line on the wrong side of (4) Fabric A 2" squares.
16. Place the squares onto (2) neighboring corners of (2) Fabric B 3 1/2" squares, right sides together.
17. Repeat stitch and flip techniques as described in the car top carrier instructions. Side mirror units should measure 3 1/2" x 3 1/2" unfinished at this step.



18. Turn side mirror units onto their sides as shown. For the left side of the car, the side mirror unit should point left. For the right side of the car, the side mirror unit should point right.

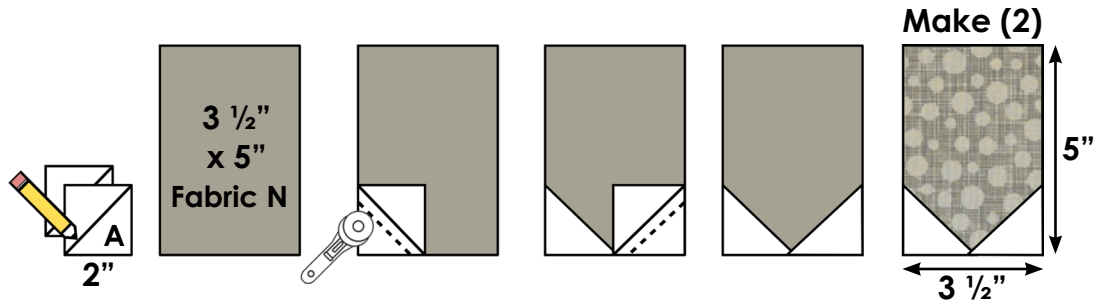
19. Sew (1) Fabric A 3 1/2" x 12 1/2" rectangle to the top of the side mirror units. Sew (1) Fabric A 3 1/2" x 9 1/2" rectangle to the bottom of the side mirror units. Press away from the side mirror units. Completed side mirrors should measure 3 1/2" x 24 1/2" unfinished.



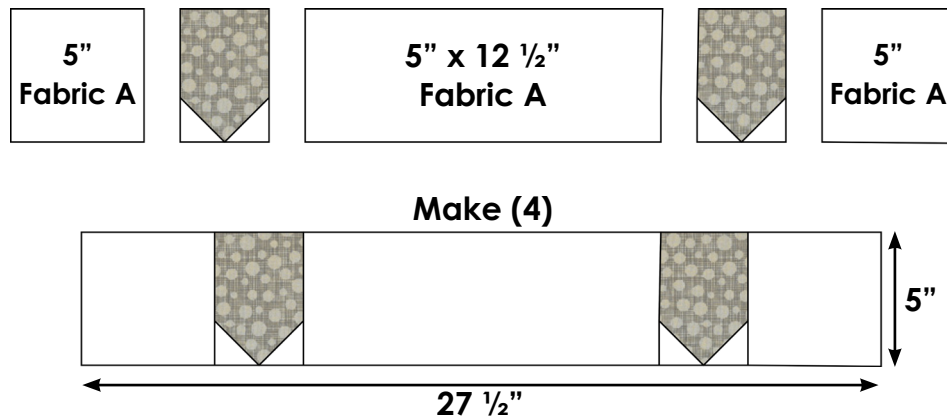
Tire Assembly:

20. Draw a diagonal line on the wrong side of (4) Fabric A 2" squares.
21. Place the squares onto (2) neighboring corners of (2) Fabric N 3 1/2" x 5" rectangles, right sides together.
22. Repeat stitch and flip techniques as described in the car top carrier instructions. Tire units should measure 3 1/2" x 5" unfinished at this step.

GIRLS TRIP

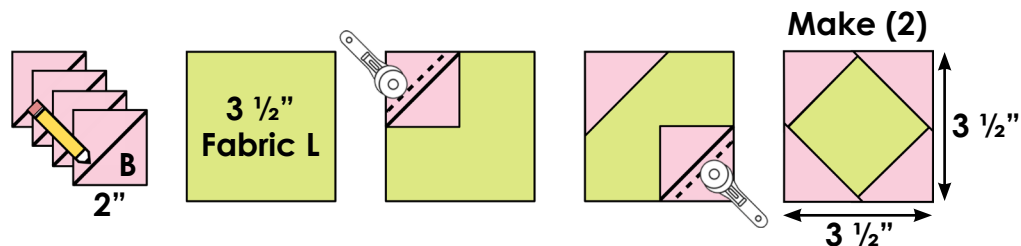


23. Gather (2) tire units, (2) Fabric A 5" squares and (1) Fabric A 5" x 12 1/2" rectangle. Arrange as shown.
24. Sew the tires together using pins to help align seams. Completed tires should measure 5" x 27 1/2" unfinished.
25. Repeat Steps 20-24 to create (4) identical tires for Block Colorways 1-4.



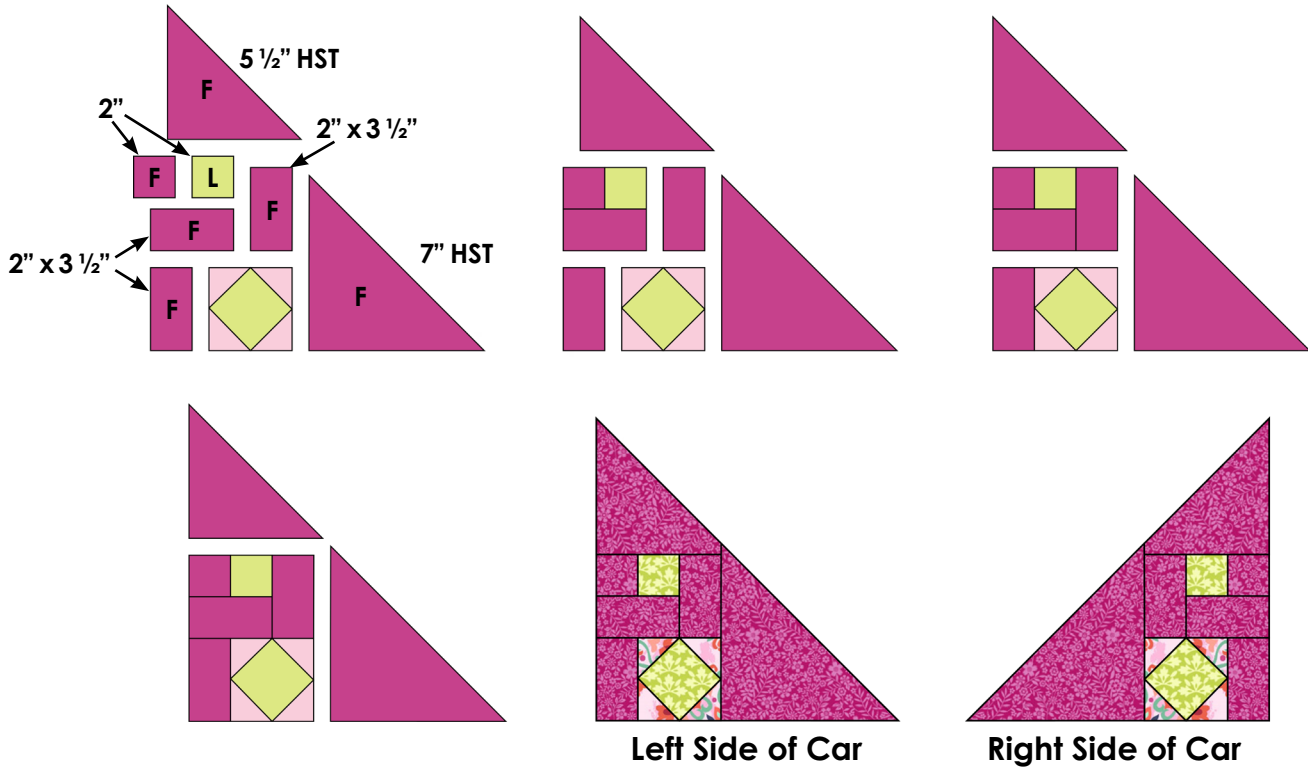
Car Body Assembly:

26. Draw a diagonal line on the wrong side of (4) Fabric B 2" squares.
27. Place a Fabric B square onto a corner of (1) Fabric L squares, right sides together.
28. Repeat stitch and flip techniques as described in the car top carrier instructions. Repeat to stitch and flip each corner of the Fabric L square to create the large headlight.
29. Repeat to create (2) large headlights measuring 3 1/2" x 3 1/2" unfinished.

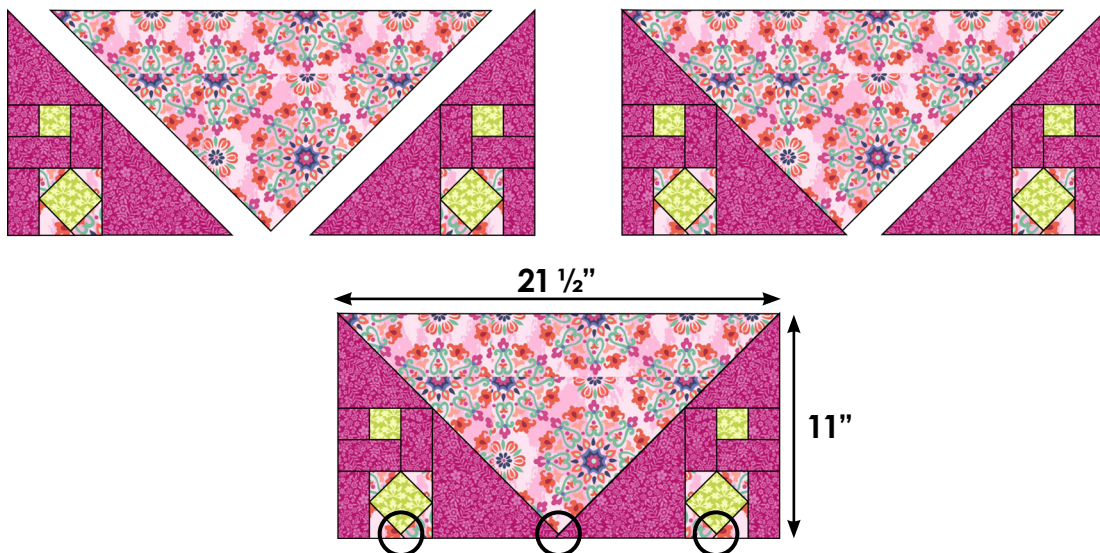


30. Arrange (1) large headlight, (1) 2" square from Fabrics F and L, (3) Fabric F 2" x 3 1/2" rectangles, (1) Fabric F 5 1/2" HST and (1) Fabric F 7" HST as shown.
31. Sew together to create the left side of the car.
32. Repeat assembly to create the right side of the car. The right side of the car will be a mirror image of the left side of the car.

GIRLS TRIP

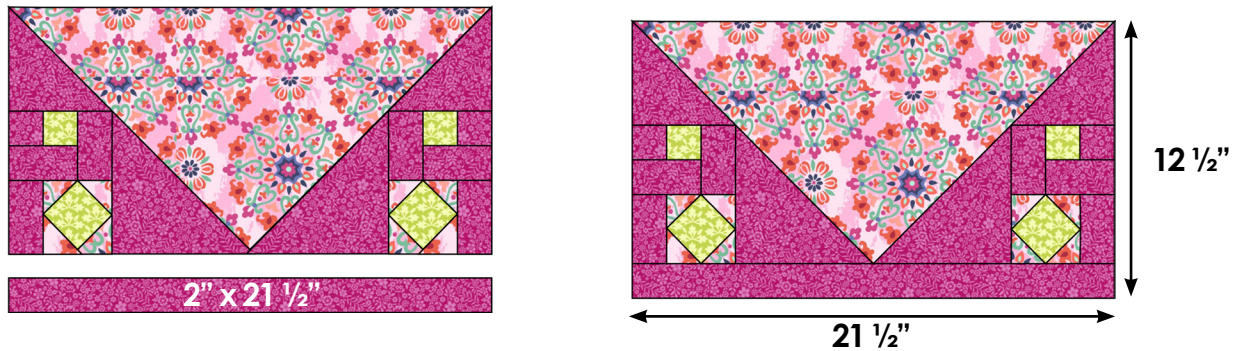


33. Place the left and right sides of the car with (1) Fabric B 16" HST as shown. Please note that the Fabric B HST has been oversized to allow for trimming.
34. Sew the left and right sides of the car to the Fabric B HST one at a time. When sewing, begin at the bottom point (flying geese point) of the Fabric B HST, and sew towards the top of the car body. This will ensure that excess fabric will be trimmed from the top of the car body.
35. Once sewing is complete, trim the car body to measure 21 1/2" x 11", ensuring that there is a 1/4" seam as indicated with the black circles.



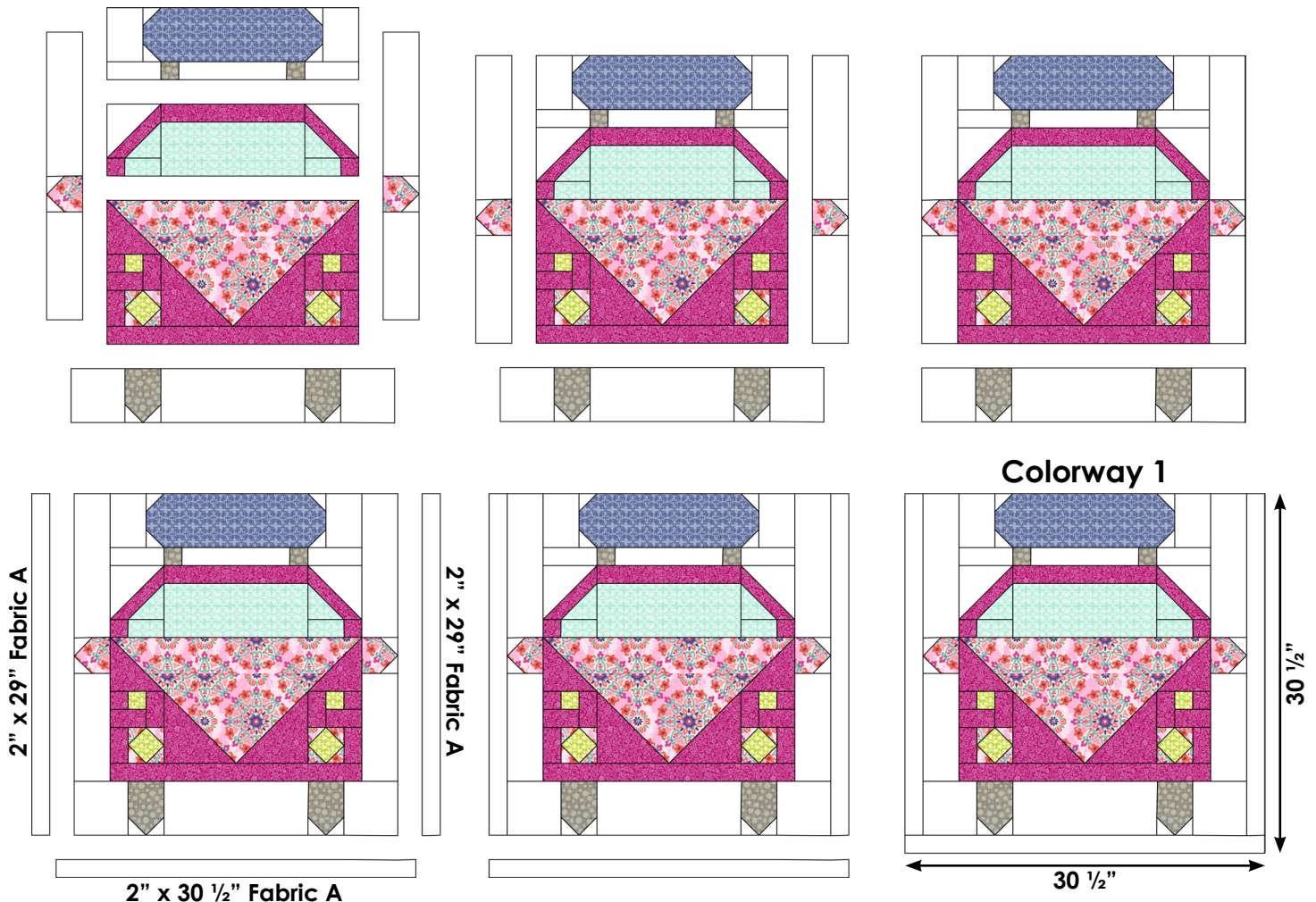
GIRLS TRIP

36. Once the car body is trimmed, sew (1) Fabric F 2" x 21 1/2" rectangle to the bottom as shown. Completed car body should measure 12 1/2" x 21 1/2" unfinished.



Final Block Assembly:

37. Complete Block Colorway 1 using all pieced units created in the above steps, (2) Fabric A 2" x 29" strips and (1) Fabric A 2" x 30 1/2" strip. Sew the block together as shown. Once complete, Block Colorway 1 should measure 30 1/2" x 30 1/2" unfinished. Only (1) Block Colorway 1 is needed.



GIRLS TRIP

Assemble Block Colorways 2-4:

38. Use Steps 1-37 to create Block Colorways 2-4. Block Colorway fabric combinations are listed below, as well as shown in detailed diagrams. Please note that Fabrics L, M and N are consistently used for each Block Colorway (headlights, windshield, car top carrier and tires). Make each Block Colorway (1) time for a total of (4) blocks. Blocks should measure 30 ½" x 30 ½" unfinished

a. Block Colorway 2:

- Car Top Carrier: Fabric J
- Car Body: Fabric G
- Car Focal Fabric: Fabric C

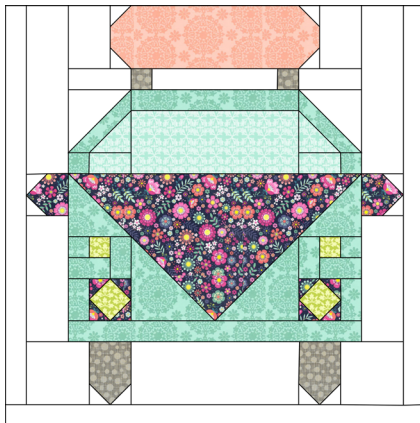
b. Block Colorway 3:

- Car Top Carrier: Fabric K
- Car Body: Fabric H
- Car Focal Fabric: Fabric D

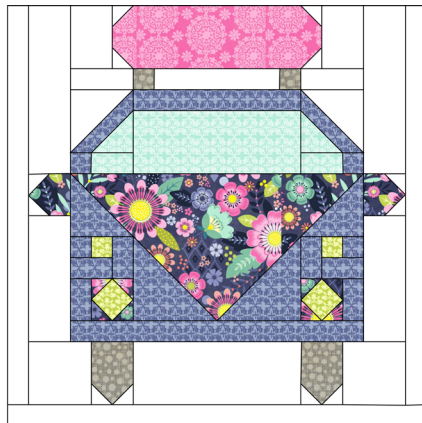
c. Block Colorway 4:

- Car Top Carrier: Fabric L
- Car Body: Fabric I
- Car Focal Fabric: Fabric E

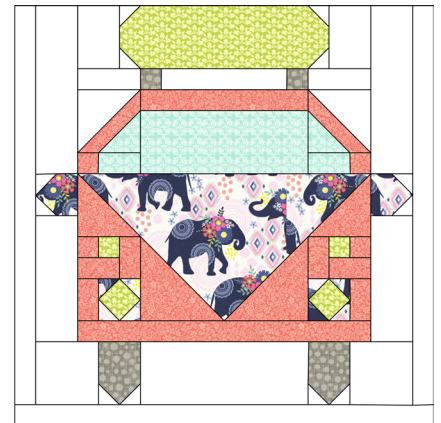
Colorway 2



Colorway 3



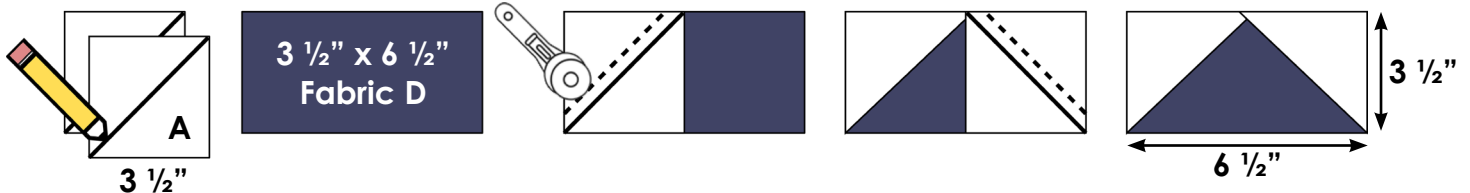
Colorway 4



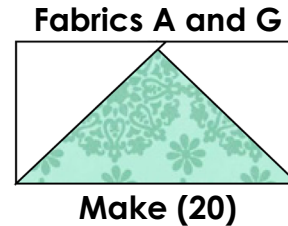
Flying Geese Unit Sashing Assembly:

39. Draw a diagonal line on the wrong side of (80) Fabric A 3 ½" squares.
40. Place (1) Fabric A square onto the corner of (1) Fabric D 3 ½" x 6 ½" rectangle, right sides together and edges aligned.
41. Sew along the drawn diagonal line.
42. Trim the excess corner fabric to a ¼" and press to the corner.
43. Repeat stitch and flip techniques on the remaining Fabric D corner to complete (1) flying geese unit measuring 3 ½" x 6 ½" unfinished.

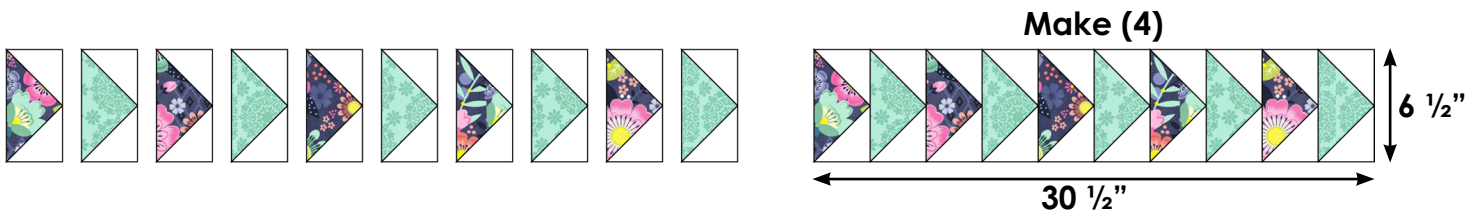
GIRLS TRIP



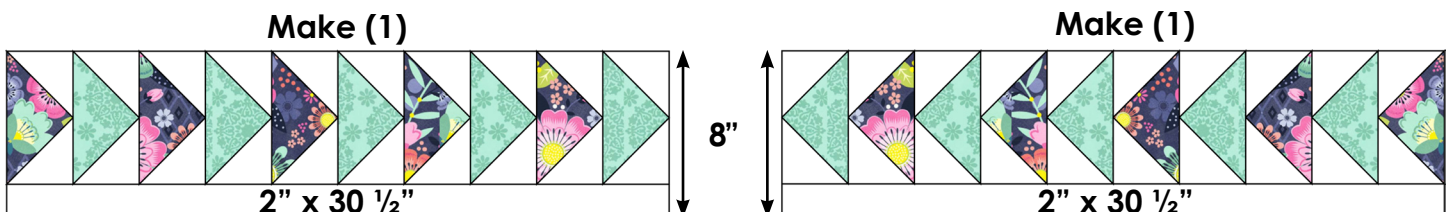
44. Repeat to create (20) flying geese units using Fabrics A and D and (20) flying geese units using Fabrics A and G. All flying geese units should measure 3 1/2" x 6 1/2" unfinished.



45. Sew (5) of each type of flying geese unit together as shown, alternating between Fabrics D and G. All flying geese units should be pointing the same direction. Press away from the points.
46. Repeat to create (4) identical flying geese unit sashing strips measuring 6 1/2" x 30 1/2" unfinished. Set (2) flying geese unit sashing strips aside for the quilt assembly.



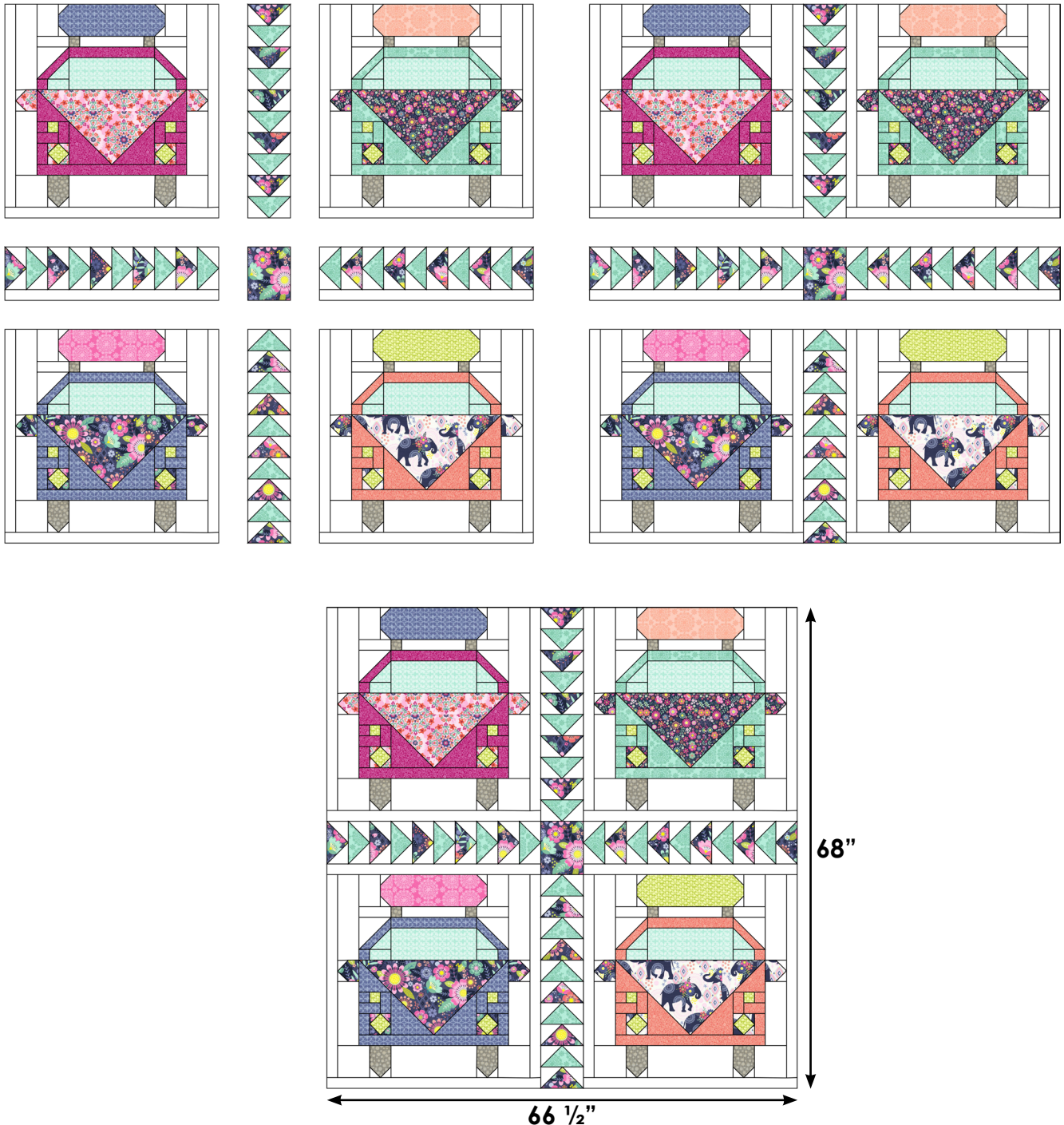
47. With flying geese unit points facing right, sew (1) Fabric A 2" x 30 1/2" strip onto the bottom of the flying geese unit sashing strip. This will be placed horizontally on the left side of the quilt top during quilt assembly.
48. Create a mirror image flying geese unit sashing strip as shown. This will be placed horizontally on the right side of the quilt top during quilt assembly. Both horizontal flying geese unit sashing strips should measure 8" x 30 1/2" unfinished.



Quilt Assembly:

49. Arrange Block Colorways 1-4 as shown. Flying Geese Unit sashing strips should point toward the center of the quilt, with (1) Fabric D 6 1/2" x 8" rectangle in the center.
50. Sew the quilt top together, pressing seams toward the blocks and the center Fabric D square. Once complete, the quilt top center should measure 66 1/2" x 68" unfinished.

GIRLS TRIP



51. Attach Fabric A Border 1, Fabric O Border 2 and Fabric D Border 3 in numerical order. For all borders, sew the side borders on first followed by the top and bottom borders. Press all seams away from the quilt top center. **(Border sizes are listed in cutting instructions for Fabrics A, O and D.)** Once all borders are attached, the completed quilt top should measure 77 1/2" x 79" unfinished.

GIRLS TRIP



Finishing the Quilt:

52. Sandwich the quilt top with batting and backing. Baste quilt layers together.
53. Quilt as desired.
54. Bind quilt using (9) Fabric F 2 1/4" x WOF strips.