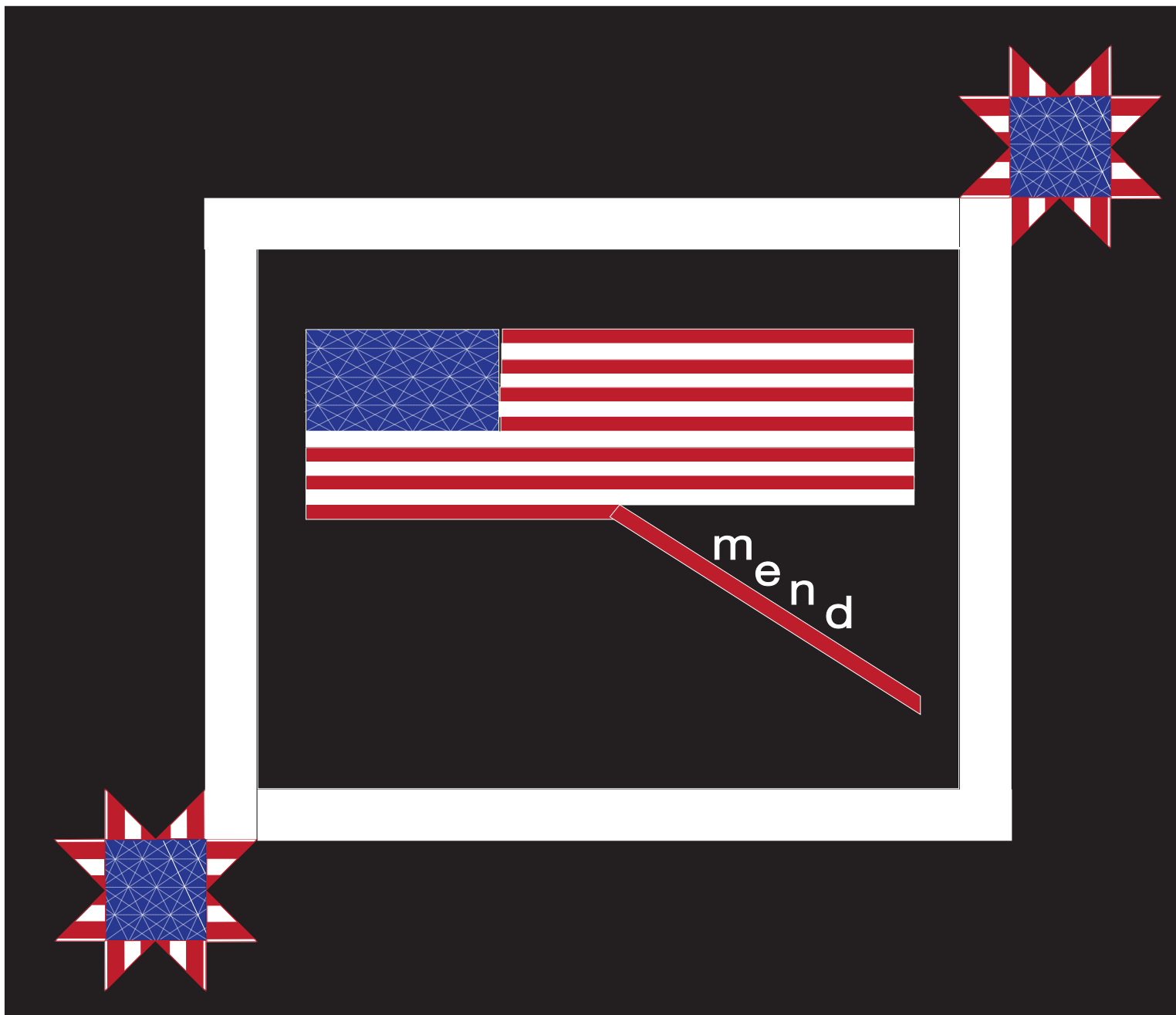
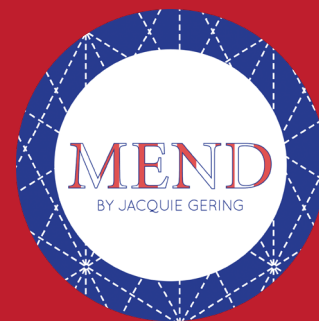


michael miller FABRICS

MEND QUILT

SIZE: 72-1/2"W x 61-1/2"H • LEVEL: BEGINNER • PATTERN BY: JACQUIE GERING



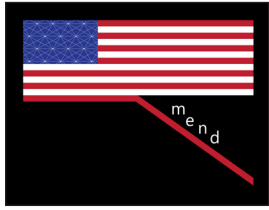
THIS IS A DIGITAL REPRESENTATION OF THE QUILT TOP, FABRIC MAY VARY.

PLEASE NOTE: BEFORE BEGINNING YOUR PROJECT, CHECK FOR ANY PATTERN UPDATES AT MICHAELMILLERFABRICS.COM'S FREE PROJECTS SECTION.

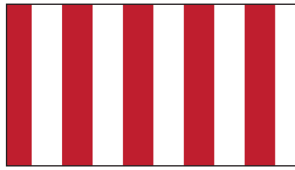
p.212.704.0774 | info@michaelmillerfabrics.com | www.michaelmillerfabrics.com

MEND QUILT

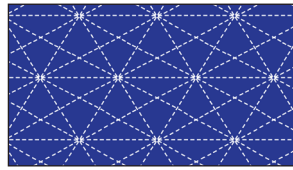
FABRIC REQUIREMENTS:



FABRIC 1
MEND PANEL
1 PANEL



FABRIC 2
MEND STRIPE
1 FQ



FABRIC 3
MEND STARS
4-3/4 YARDS



FABRIC 4
SC5333-BLACK
3 YARDS



FABRIC 5
SC5333-BRIGHT WHITE
1/2 YARD

KEY	CUTTING INSTRUCTIONS	
1 MEND PANEL	Cut 1	Trim each panel to 42" x 31-1/2" (Aim for approximately 3-1/2" above the flag and 2-1/2" to the right of the flag.)
2 MEND STRIPE	(2) 4" x 18" strips	Sub-cut into (8) 4" squares
3 MEND STARS	(1) 6-1/2" WOF strip Backing	Sub-cut into (6-1/2" squares) 40" x 80" 40" x 80"
4 BLACK COTTON COUTURE SOLID	(1) 4" WOF strip. Sub-cut into (8) 4" squares (3) 3-1/2" WOF strips. (5) 12-1/2" WOF strips. (8) 2-1/2" x WOF strips for binding	Sub-cut into (8) 4" squares Sub-cut into (4) 3-1/2" squares C (2) 3-1/2" x 6-1/2" D (2) 3-1/2" x 9-1/2" E (2) 3-1/2" x 15-1/2" F1 (2) 12-1/2" x 42" F2 (2) 12-1/2" x 4" G1 (2) 12-1/2" x 42" G2 (2) 12-1/2" x 5"
5 BRIGHT WHITE COTTON COUTURE SOLID	(4) 3-1/2" WOF strips	A (2) 3-1/2" x 42" strips B (2) 3-1/2" x 37-1/2" strips

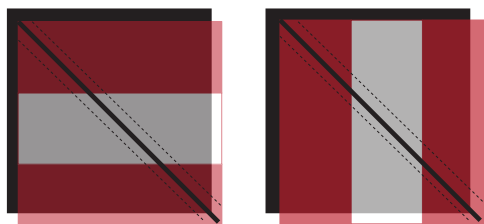
****Straighten the panel before cutting to size.**

****Sew with a scant 1/4" seam and press all seams open.**

Piecing Instructions:

Make (16) half square triangles. (HST's)

1. Gather the (8) MEND stripe squares and the (8) 4" black squares.
2. Place a striped square and black square right sides together.



3. Pair half of the black squares with the stripes in a vertical orientation and half of the black squares in a horizontal orientation. Draw a line from the top left corner to the bottom right corner on the wrong side of each striped square as shown.

4. Sew 1/4" away from each side of the drawn line.

5. Cut on the drawn line of each sewn square set to yield two HST's. Repeat to make 16 HST's.

6. Press the seam open and trim to 3 1/2" square.

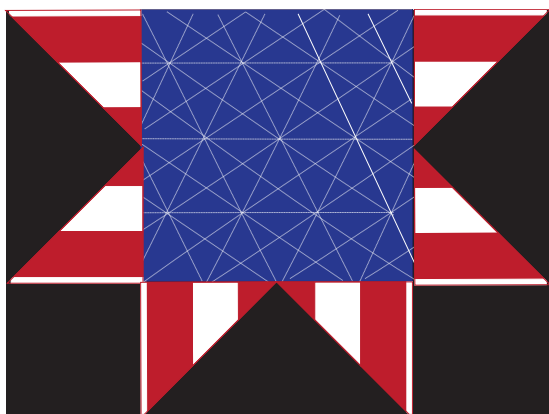
7. Pair each HST with its mirror image with the stripes vertical as shown.



8. Sew mirror image HST pairs together to create (8) sets of star points that look like this.



Construct (2) partial stars.



9. Gather (2) blue 6½" squares, (6) star point sets, and (4) 3½" black squares to construct two partial stars.

10. Sew a star point set to each side of the blue square making sure the points are oriented correctly.

11. Sew a 3½" black square to each side of a star point set.

12. Sew the row constructed in Step 11 to the bottom of the center star section making sure to match seams and corners.

13. Repeat steps 10-12 to piece another partial star for a total of (2) and set aside.

Frame the panel.

14. Gather the white strips A, B and the panel.

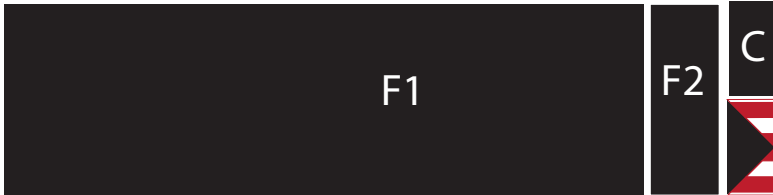
15. Sew the A strips to the top and bottom of the panel matching edges and corners.

16. Sew the B strips to the right and left side of the panel matching edge and corners.

Piece the F Section.

17. Gather (2) F1 and (2) F2, (2) C and (2) star point sets.

18. Orient the star point set as shown and sew C to the top.



19. Sew F1 and F2 together. Sew the piece in Step 18 to the right side of the combined F piece. Repeat to create another F section.

20. Sew the F sections to the top and bottom of the framed panel making sure to position the star points on the right on the top and on the left on the bottom.

Piece the G section.

21. Gather (2) partial stars, (2) D, (2) E and (2) G1 and G2 pieces.

22. Orient the star as shown and sew D to the top of the partial star.



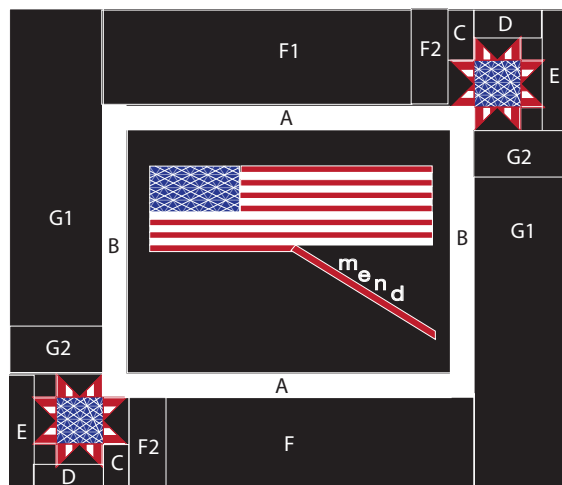
23. Sew E to the right side of the piece in Step 22.

MEND QUILT

24. Sew G1 to G2 and sew the combined G section to the bottom of the partial star piece to complete the G section. Repeat Steps 22 - 24 to create another G section.

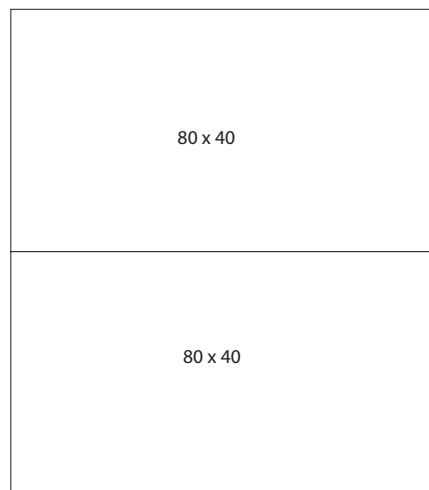
25. Sew the G sections to the right and left side of the framed panel making sure to position the star on top on the right side and the star on the bottom on the left side.

Layout Diagram



Make the back.

26. Sew the two pieces together along the 80" edge to make the back.



Finish the quilt.

27. Layer quilt top, batting and backing together to form quilt sandwich. Baste and quilt as desired.

28. Join the (8) 2 1/2" binding strips and bind to finish the quilt.