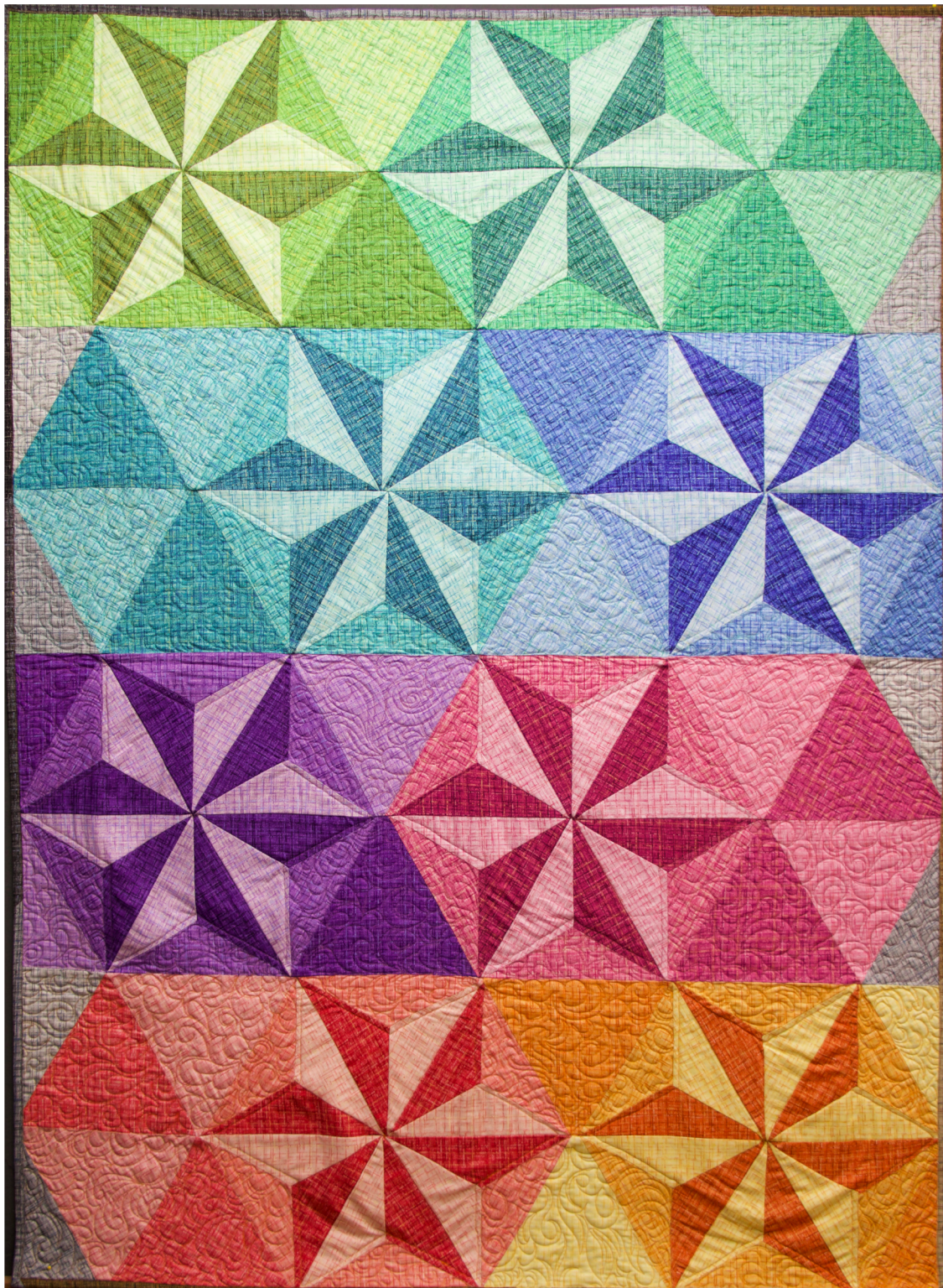


michael miller FABRICS

# COCO STAR QUILT

SIZE 43 1/2" W X 60" H / LEVEL CONFIDENT BEGINNER / PATTERN BY ROB APPELL



**PLEASE NOTE:** BEFORE BEGINNING YOUR PROJECT, CHECK FOR ANY PATTERN UPDATES AT [MICHAELMILLERFABRICS.COM](http://MICHAELMILLERFABRICS.COM)'S FREE PROJECTS SECTION.

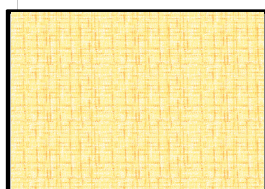
p.212.704.0774 | [info@michaelmillerfabrics.com](mailto:info@michaelmillerfabrics.com) | [www.michaelmillerfabrics.com](http://www.michaelmillerfabrics.com)



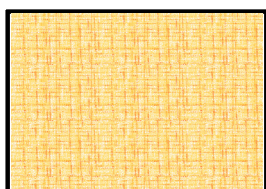


# COCO STAR QUILT

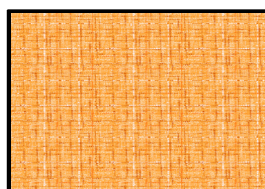
A



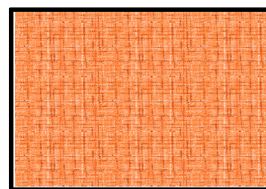
**CX9316 COCO  
LEMON**  
1/8 YD or  
FAT QUARTER  
VALUE 1



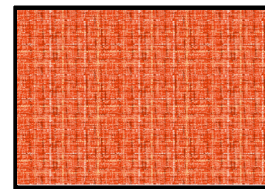
**CX9316 COCO  
MARIGOLD**  
10" X 10" or  
FAT QUARTER  
VALUE 2



**CX9316 COCO  
MARMALADE**  
1/8 YD or  
FAT QUARTER  
VALUE 3

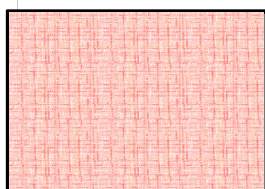


**CX9316 COCO  
TANGERINE**  
10" X 10" or  
FAT QUARTER  
VALUE 4

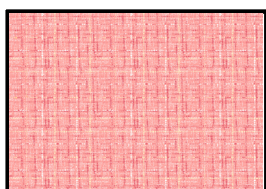


**CX9316 COCO  
ORANGE**  
1/8 YD or  
FAT QUARTER  
VALUE 5

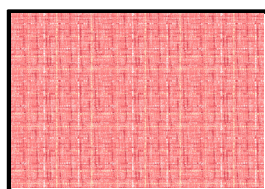
B



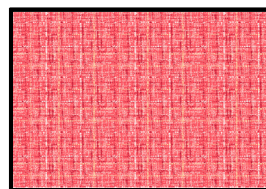
**CX9316 COCO  
PEACH**  
1/8 YD or  
FAT QUARTER  
VALUE 1



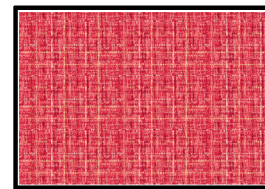
**CX9316 COCO  
APRICOT**  
10" X 10" or  
FAT QUARTER  
VALUE 2



**CX9316 COCO  
CORAL**  
1/8 YD or  
FAT QUARTER  
VALUE 3

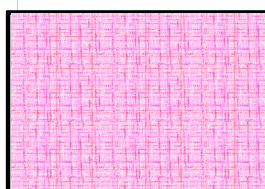


**CX9316 COCO  
ROSE**  
10" X 10" or  
FAT QUARTER  
VALUE 4

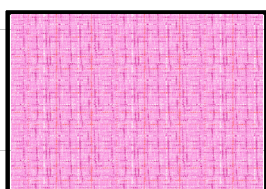


**CX9316 COCO  
RASPBERRY**  
1/8 YD or  
FAT QUARTER  
VALUE 5

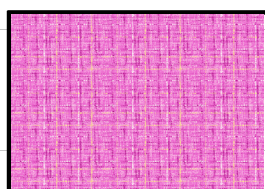
C



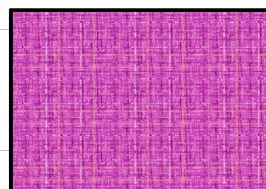
**CX9316 COCO  
BLUSH**  
1/8 YD or  
FAT QUARTER  
VALUE 1



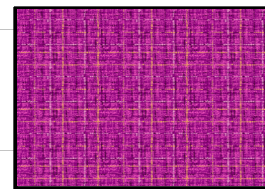
**CX9316 COCO  
PINK**  
10" X 10" or  
FAT QUARTER  
VALUE 2



**CX9316 COCO  
BUBBLEGUM**  
1/8 YD or  
FAT QUARTER  
VALUE 3

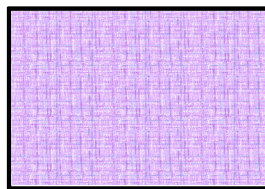


**CX9316 COCO  
FUSCHIA**  
10" X 10" or  
FAT QUARTER  
VALUE 4

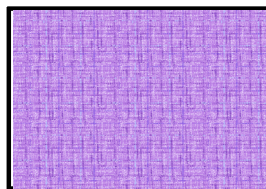


**CX9316 COCO  
MAGENTA**  
1/8 YD or  
FAT QUARTER  
VALUE 5

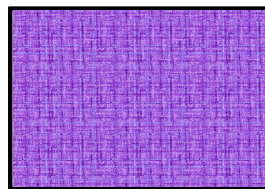
D



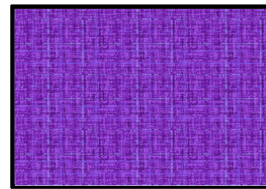
**CX9316 COCO  
LAVENDAR**  
1/8 YD or  
FAT QUARTER  
VALUE 1



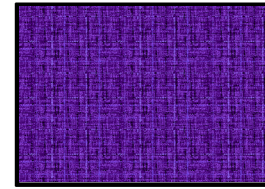
**CX9316 COCO  
IRIS**  
10" X 10" or  
FAT QUARTER  
VALUE 2



**CX9316 COCO  
VIOLET**  
1/8 YD or  
FAT QUARTER  
VALUE 3



**CX9316 COCO  
PURPLE**  
10" X 10" or  
FAT QUARTER  
VALUE 4

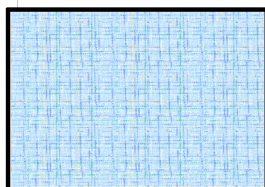


**CX9316 COCO  
EGGPLANT**  
1/8 YD or  
FAT QUARTER  
VALUE 5

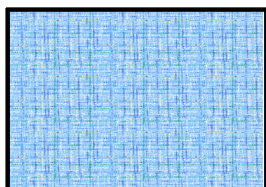


# COCO STAR QUILT

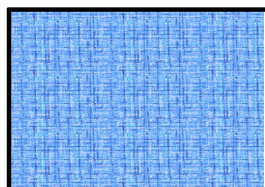
E



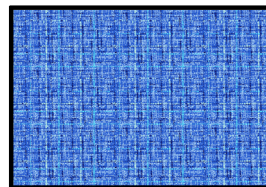
**CX9316 COCO  
SKY**  
1/8 YD or  
FAT QUARTER  
VALUE 1



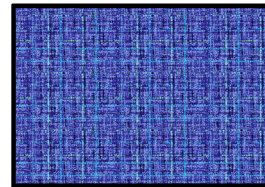
**CX9316 COCO  
OCEAN**  
10" X 10" or  
FAT QUARTER  
VALUE 2



**CX9316 COCO  
CORNFLOWER**  
1/8 YD or  
FAT QUARTER  
VALUE 3

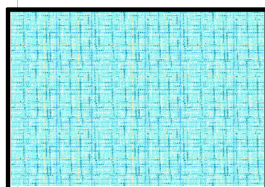


**CX9316 COCO  
COBALT**  
10" X 10" or  
FAT QUARTER  
VALUE 4

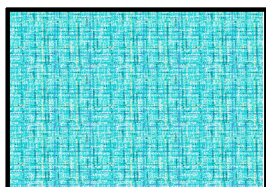


**CX9316 COCO  
AZURE**  
1/8 YD or  
FAT QUARTER  
VALUE 5

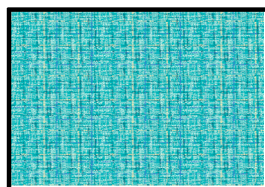
F



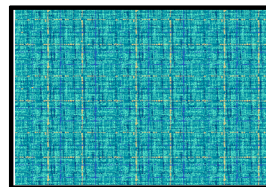
**CX9316 COCO  
AQUA**  
1/8 YD or  
FAT QUARTER  
VALUE 1



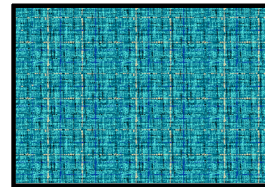
**CX9316 COCO  
BREEZE**  
10" X 10" or  
FAT QUARTER  
VALUE 2



**CX9316 COCO  
TURQUOISE**  
1/8 YD or  
FAT QUARTER  
VALUE 3

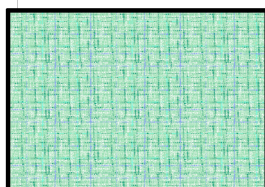


**CX9316 COCO  
CARIBBEAN**  
10" X 10" or  
FAT QUARTER  
VALUE 4

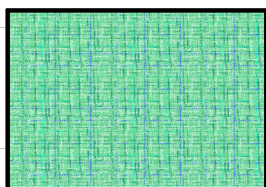


**CX9316 COCO  
PEACOCK**  
1/8 YD or  
FAT QUARTER  
VALUE 5

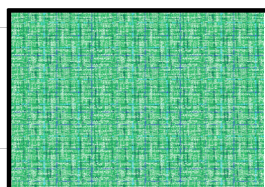
G



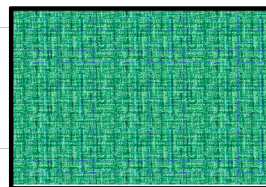
**CX9316 COCO  
MINT**  
1/8 YD or  
FAT QUARTER  
VALUE 1



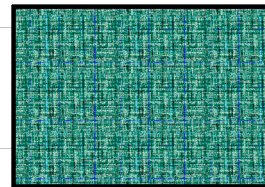
**CX9316 COCO  
SEAFOAM**  
10" X 10" or  
FAT QUARTER  
VALUE 2



**CX9316 COCO  
JADE**  
1/8 YD or  
FAT QUARTER  
VALUE 3

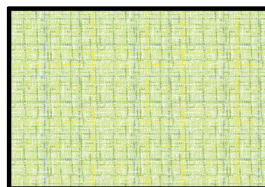


**CX9316 COCO  
TEAL**  
10" X 10" or  
FAT QUARTER  
VALUE 4

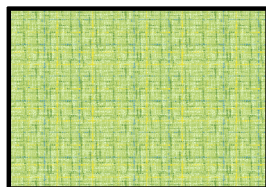


**CX9316 COCO  
PINE**  
1/8 YD or  
FAT QUARTER  
VALUE 5

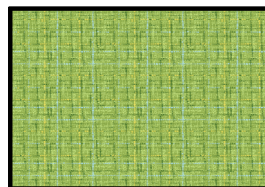
H



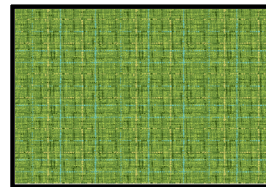
**CX9316 COCO  
LIME**  
1/8 YD or  
FAT QUARTER  
VALUE 1



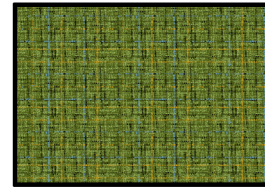
**CX9316 COCO  
PEAR**  
10" X 10" or  
FAT QUARTER  
VALUE 2



**CX9316 COCO  
PISTACHIO**  
1/8 YD or  
FAT QUARTER  
VALUE 3

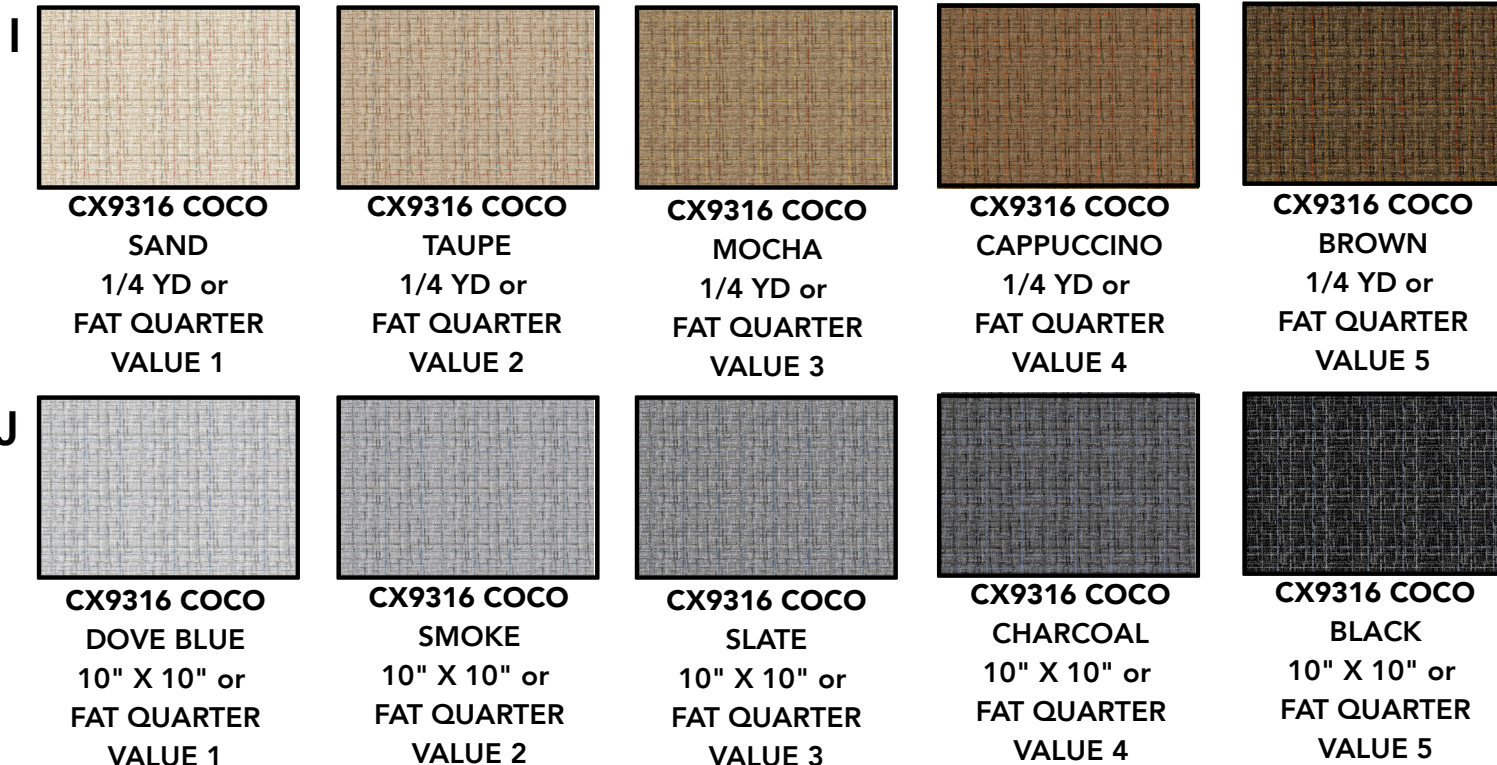


**CX9316 COCO  
ASPARAGUS**  
10" X 10" or  
FAT QUARTER  
VALUE 4

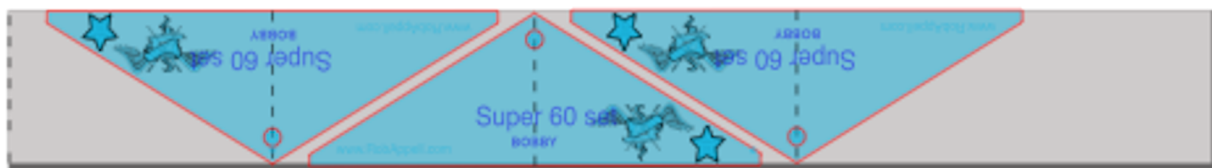


**CX9316 COCO  
BASIL**  
1/8 YD or  
FAT QUARTER  
VALUE 5

# COCO STAR QUILT



GROUP	VALUE NUMBERS	CUTTING INSTRUCTIONS
A, B, C, D, E, F, G, H	1, 3, 5	CUT TWO STRIPS FROM EACH FABRIC THAT MEASURE 3-1/4" X 22". STACKING NO MORE THAN SIX STRIPS AT A TIME CUT THREE BOBBY TEMPLATE SHAPES AS SHOWN IN THE DIAGRAM BELOW. REMEMBER TO CUT OFF THE TWO CORNER TIPS.
A, B, C, D, E, F, G, H	2, 4	CUT TWO 8-1/2" 60 DEGREE TRIANGLES FROM EACH COLOR. CUT ONE OF EACH 60 DEGREE TRIANGLE IN HALF TOP TO BOTTOM
J	1, 2	CUT TWO 8-1/2" 60 DEGREE TRIANGLES FROM EACH FABRIC, THEN CUT THE TRIANGLES IN HALF TOP TO BOTTOM
I	1, 2, 3, 4, 5	CUT TWO 2-1/2" X 22" STRIPS
J	3, 4, 5	CUT TWO 2-1/2" X 22" STRIPS







# COCO STAR QUILT

## ASSEMBLING THE BOBBY TRIANGLES

THE BOBBY TEMPLATES ARE EASY TO STITCH TOGETHER. SIMPLY START TWO BOBBY SHAPED FABRICS, RIGHTS SIDES TOGETHER (RST) AND SEW A 1/4" SEAM ALONG ONE OF THE SHORT SIDES. DIAGRAM A

PRESS SEAM TO ONE SIDE

ADD YOUR THIRD BOBBY SHAPED FABRIC, RST, SEWING ALONG TWO SHORT SIDES LIKE BEFORE. WHEN THE NEEDLE HITS THE THREADS OF THE FIRST SEAM PIVOT WITH YOUR NEEDLE DOWN, AND CONTINUE ALONG THE OTHER TWO SHORT SIDES. DIAGRAM B



## ASSEMBLING THE ROWS

THE COCO STAR QUILT IS BUILT IN HORIZONTAL ROWS OR TRIANGLES IN ALTERNATING ORIENTATION. THE ENTIRE QUILT SHOULD BE LAID OUT PRIOR TO SEWING THE TRIANGLES TOGETHER INTO THE ROWS.

START WITH THREE BOBBY TRIANGLES AND LAY THEM SO THAT THE VALUES 1 AND 5 ARE TOUCHING AND VALUE 3 IS FORMING THE OUTSIDE OF THE STAR.

THE SPACE BETWEEN STARS WILL BE THE FULL 8-1/2" 60 DEGREE TRIANGLES FORM VALUES 2 AND 4 FROM THE SAME FABRIC GROUP.

THE END OF EACH ROW IS FILLED IN WITH THE HALF PIECES OF THE FULL 8-1/2" 60 DEGREE TRIANGLES FROM THE GROUP J FABIRCS VALUES 1 AND 2. DIAGRAM C



C

## BINDING STRIPS

USING THE 2-1/2" X 22" STRIPS FROM FABRIC GROUPS I AND J PREPARE YOUR BINDING. LAYOUT YOUR COLORS FROM LIGHTEST TO DARKEST BACK TO LIGHTEST AS YOU SEW THE SHORT ENDS TOGETHER WITH A BIAS JOINING SEAM. PRESS IN HALF LONG WISE TO BE READY TO FINISH THE QUILT.



# COCO STAR QUILT

## LAYOUT FOR ENTIRE QUILT ASSEMBLY

