

michael miller FABRICS

# A NEW SHERIFF IN TOWN

SIZE: 52 1/2" W X 52 1/2" H • LEVEL: BEGINNER • PATTERN BY: NATALIE CRABTREE • COUNTRY RODEO COLLECTION  
PATTERN AVAILABLE ON: [WWW.MICHAELMILLERFABRICS.COM](http://WWW.MICHAELMILLERFABRICS.COM)



THIS IS A DIGITAL REPRESENTATION OF THE QUILT TOP, FABRIC MAY VARY.

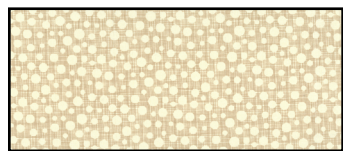
**PLEASE NOTE:** BEFORE BEGINNING YOUR PROJECT, CHECK FOR ANY PATTERN UPDATES AT [MICHAELMILLERFABRICS.COM](http://MICHAELMILLERFABRICS.COM)'S FREE PROJECTS SECTION.

p.212.704.0774 | [info@michaelmillerfabrics.com](mailto:info@michaelmillerfabrics.com) | [www.michaelmillerfabrics.com](http://www.michaelmillerfabrics.com)

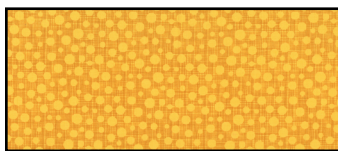




# A NEW SHERIFF IN TOWN



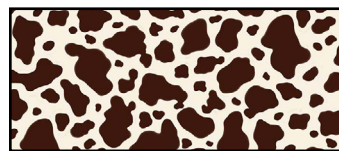
**FABRIC A**  
Hash Dot  
CX6699 Linen  
1  $\frac{5}{8}$  yards



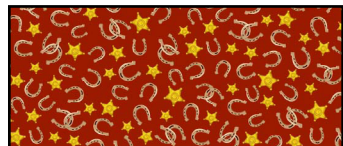
**FABRIC B**  
Hash Dot  
CX6699 Mustard  
 $\frac{3}{4}$  yard



**FABRIC C**  
CX9465  
Rodeo Ranch Navy  
 $\frac{1}{2}$  yard



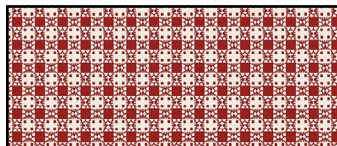
**FABRIC D**  
CX9464  
Hoof It Brown  
 $\frac{3}{4}$  yard



**FABRIC E**  
CX9463  
Golden Horseshoes Red  
1 yard



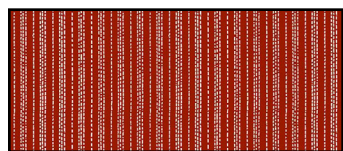
**FABRIC F**  
CX9461  
Tossed Bandana Navy  
1  $\frac{3}{8}$  yard (includes binding)



**FABRIC G**  
CX9460  
Hokey Pokey Red  
 $\frac{1}{4}$  yard



**FABRIC H**  
CX9460  
Hokey Pokey Navy  
 $\frac{1}{4}$  yard



**FABRIC I**  
CX9462  
Wrangler Stripe Red  
 $\frac{1}{4}$  yard



# A NEW SHERIFF IN TOWN

**Additional supplies needed:**

Backing: 3 ½ yards giving you 4" additional inches on each side

Batting: 60 ½" square piece of batting giving you 4 inches overage on each side

Additional Supplies Needed: Basic Sewing Supplies, Fusible Web of your choice for applique

**FUSIBLE WEB CUTTING INSTRUCTIONS**

- On the smooth side of fusible web trace (13) Large Circle Templates, (13) Medium Circle Templates, (65) Small Circle Templates and (13) Star Templates. Roughly cut out each template just outside of the traced line and set aside. **(Please note: Instructions included in this pattern are for raw edge applique, therefore templates do not include a seam allowance. If you wish to complete turn under applique, simply add a ¼" around all edges of each template. Proceed with your preferred applique method.)**

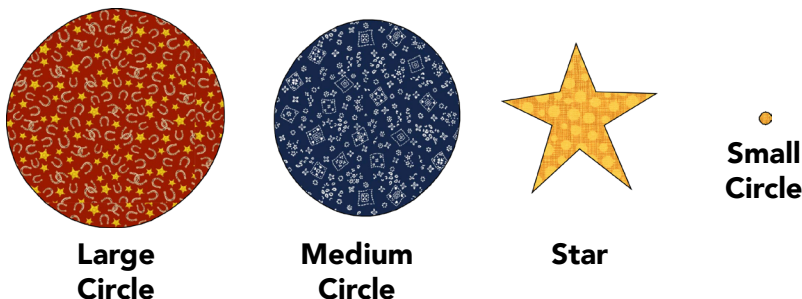
KEY	FABRIC CUTTING INSTRUCTIONS
<b>A</b>	<ul style="list-style-type: none"><li>Cut (4) 9 ½" x WOF strips. Subcut (13) 9 ½" squares for Block A.</li><li>Cut (8) 2" x WOF strips. Subcut (48) 2" x 6 ½" rectangles for Block B.</li></ul>
<b>B</b>	<ul style="list-style-type: none"><li>Fuse (13) Star Fusible Templates and (65) Small Circle Fusible Templates on the wrong side of fabric. Cut out each Applique Piece on the traced line and set aside for Block A assembly.</li></ul>
<b>C</b>	<ul style="list-style-type: none"><li>Fussy cut (12) 4 ½" x 6 ½" panel images from yardage for Block B.</li></ul>
<b>D</b>	<ul style="list-style-type: none"><li>Cut (6) 3 ½" x WOF strips. Piece for length using diagonal seams. From the long strip subcut the following:<ul style="list-style-type: none"><li>(2) 3 ½" x 47" strips for Side Border 2.</li><li>(2) 3 ½" x 53" strips for Top/Bottom Border 2.</li></ul></li></ul>
<b>E</b>	<ul style="list-style-type: none"><li>Fuse (13) Large Circle Fusible Templates on the wrong side of fabric. Cut out each Applique Piece on the traced line and set aside for Block A assembly.</li></ul>
<b>F</b>	<ul style="list-style-type: none"><li>Cut (6) 2 ¼" x WOF strips for binding.</li><li>Cut (F) 1 ¼" x WOF strips. Piece strips for length using diagonal seams. From the long strip subcut the following:<ul style="list-style-type: none"><li>(2) 1 ¼" x 45 ½" strips for Side Border 1.</li><li>(2) 1 ¼" x 47" strips for Top/Bottom Border 1.</li></ul></li><li>Use the remaining yardage to fuse (13) Medium Circle Fusible Templates on the wrong side of fabric. Cut out each Applique Piece on the traced line and set aside for Block A assembly.</li></ul>
<b>G</b>	<ul style="list-style-type: none"><li>Cut (2) 2" x WOF strips. Subcut (24) 2" squares for Block B.</li></ul>
<b>H</b>	<ul style="list-style-type: none"><li>Cut (2) 2" x WOF strips. Subcut (24) 2" squares for Block B.</li></ul>
<b>I</b>	<ul style="list-style-type: none"><li>Cut (4) 1 ½" x WOF strips. Subcut (24) 1 ½" x 6 ½" rectangles for Block B.</li></ul>

# A NEW SHERIFF IN TOWN

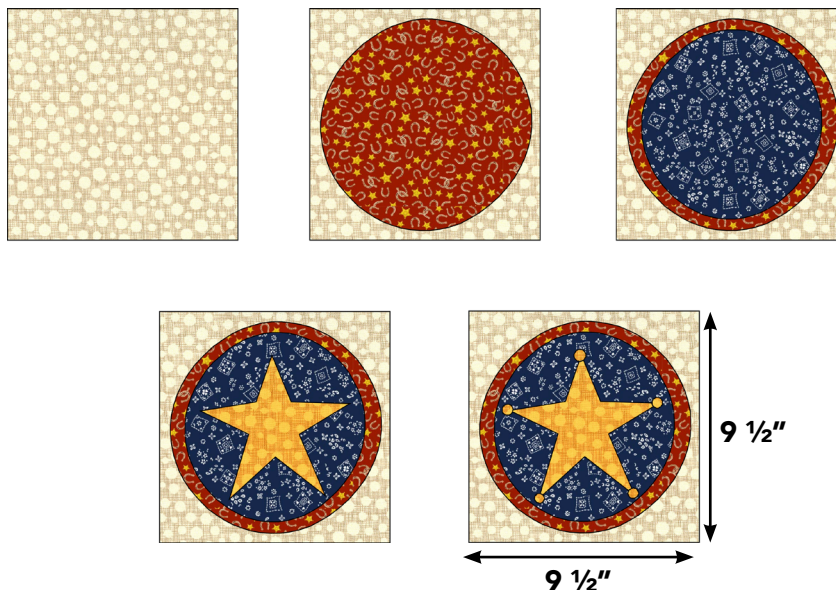
## Piecing Instructions

### Block A:

1. Begin Block A assembly by removing the paper from the glue side of each Large, Medium and Small Circle Applique Piece (*Fabrics B, E, and F*) and each Star Applique Piece (*Fabric B*).



2. Begin layering the Applique Pieces onto (13) Fabric A 9 1/2" squares using the order listed below and the diagrams for reference. It is recommended to layer all Applique Pieces before fusing to ensure you are satisfied with the placement of each piece. Please note that the Small Circle Applique Pieces will cover each star point slightly.
  - a. First, place Fabric E Large Circle Applique Pieces centering them onto the Fabric A square.
  - b. Second, place Fabric F Medium Circle Applique Pieces centering them onto the Large Circles.
  - c. Third, place Fabric B Star Applique Pieces centering them onto the Medium Circles.
  - d. Last, place Fabric B Small Circle Applique Pieces overlapping the Star Points slightly.



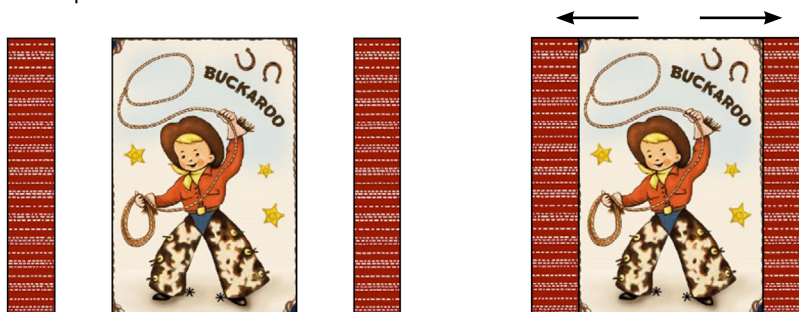
3. Once you are satisfied with the placement of each applique, fuse in place thoroughly.
4. Stitch around each individual applique piece using a decorative stitch and thread color of your choice.
5. Snip threads and press for a nice finish.
6. Repeat to create (13) Block A measuring 9 1/2" x 9 1/2" unfinished.



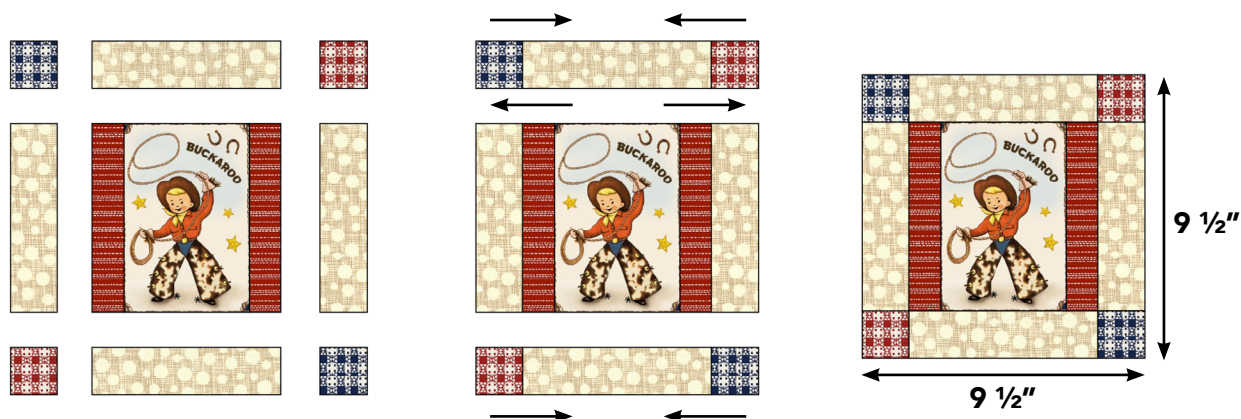
# A NEW SHERIFF IN TOWN

## Block B:

7. Sew (1) Fabric I  $1\frac{1}{2}'' \times 6\frac{1}{2}''$  rectangle to either side of (1) Fabric C  $4\frac{1}{2}'' \times 6\frac{1}{2}''$  panel image as shown. Press outward toward Fabric I.
8. Repeat to sew (24) Fabric I rectangles onto (12) panel images. Blocks will measure  $6\frac{1}{2}'' \times 6\frac{1}{2}''$  unfinished at this step.



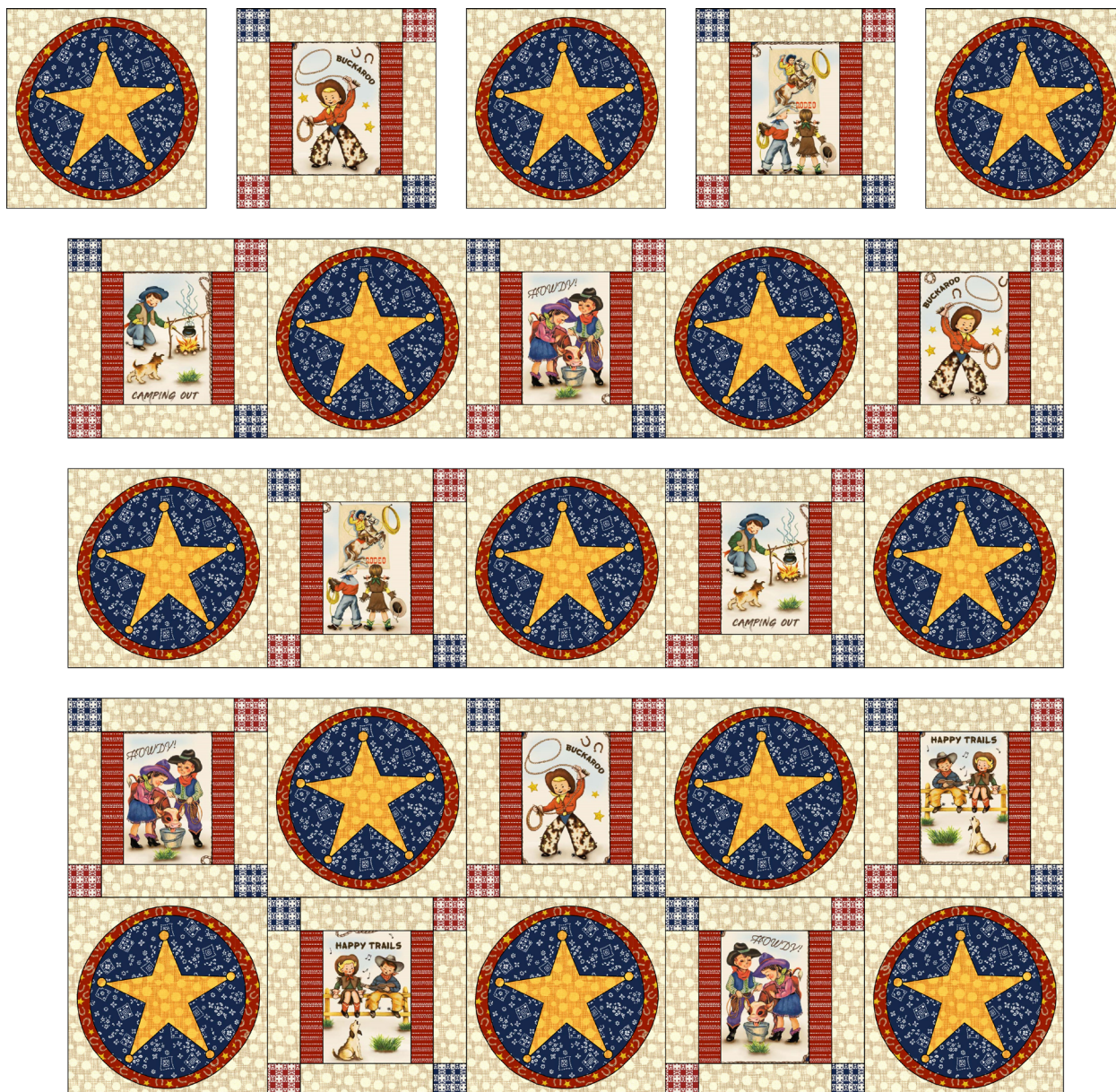
9. Lay out (2) 2" squares from Fabrics G and H, (4) Fabric A  $2'' \times 6\frac{1}{2}''$  rectangles and the Block B unit created in the above steps as shown. Ensure that Fabric G squares are placed in opposite corners of the block, and Fabric H squares are placed in opposite corners of the block.
10. Begin sewing Block B together, pressing all seams toward the Fabric A rectangles.
11. Repeat to create (12) Block B. Block B should measure  $9\frac{1}{2}'' \times 9\frac{1}{2}''$  unfinished.



## Quilt Assembly

12. Lay out (13) Block A and (12) Block B in a 5 x 5 grid as shown. Alternate between Blocks A and B so that odd numbered rows begin and end with Block A, and even numbered rows begin and end with Block B.
13. Sew the quilt together in horizontal rows, pressing seams to Block B.
14. Sew the horizontal rows together to complete the quilt top center. Press. Quilt top center should measure  $45\frac{1}{2}'' \times 45\frac{1}{2}''$  unfinished.

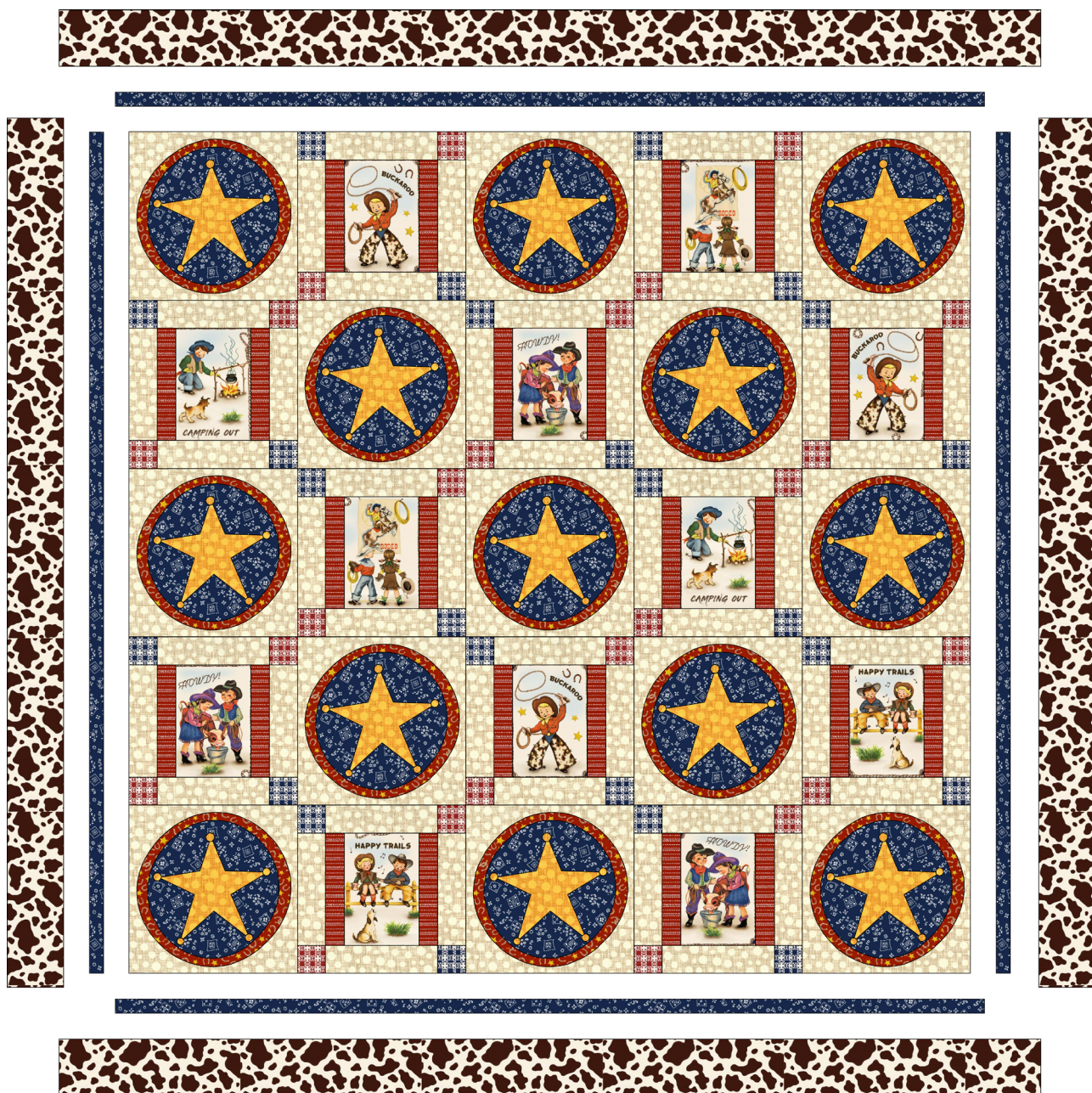
# A NEW SHERIFF IN TOWN



15. Attach the Fabric F Side Border 1 strips measuring  $1\frac{1}{4}'' \times 45\frac{1}{2}''$  to either side of the quilt top center. Press outward.
16. Attach the Fabric F Top/Bottom Border 1 strips measuring  $1\frac{1}{4}'' \times 47''$  to the top and bottom of the quilt top center. Press outward.
17. Attach the Fabric D Side Border 2 strips measuring  $3\frac{1}{2}'' \times 47''$  to either side of the quilt top. Press outward.
18. Attach the Fabric D Top/Bottom Border 2 strips measuring  $3\frac{1}{2}'' \times 53''$  to the top and bottom of the quilt top. Press outward to complete the quilt.



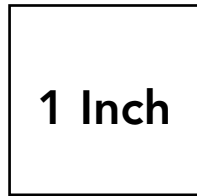
# A NEW SHERIFF IN TOWN



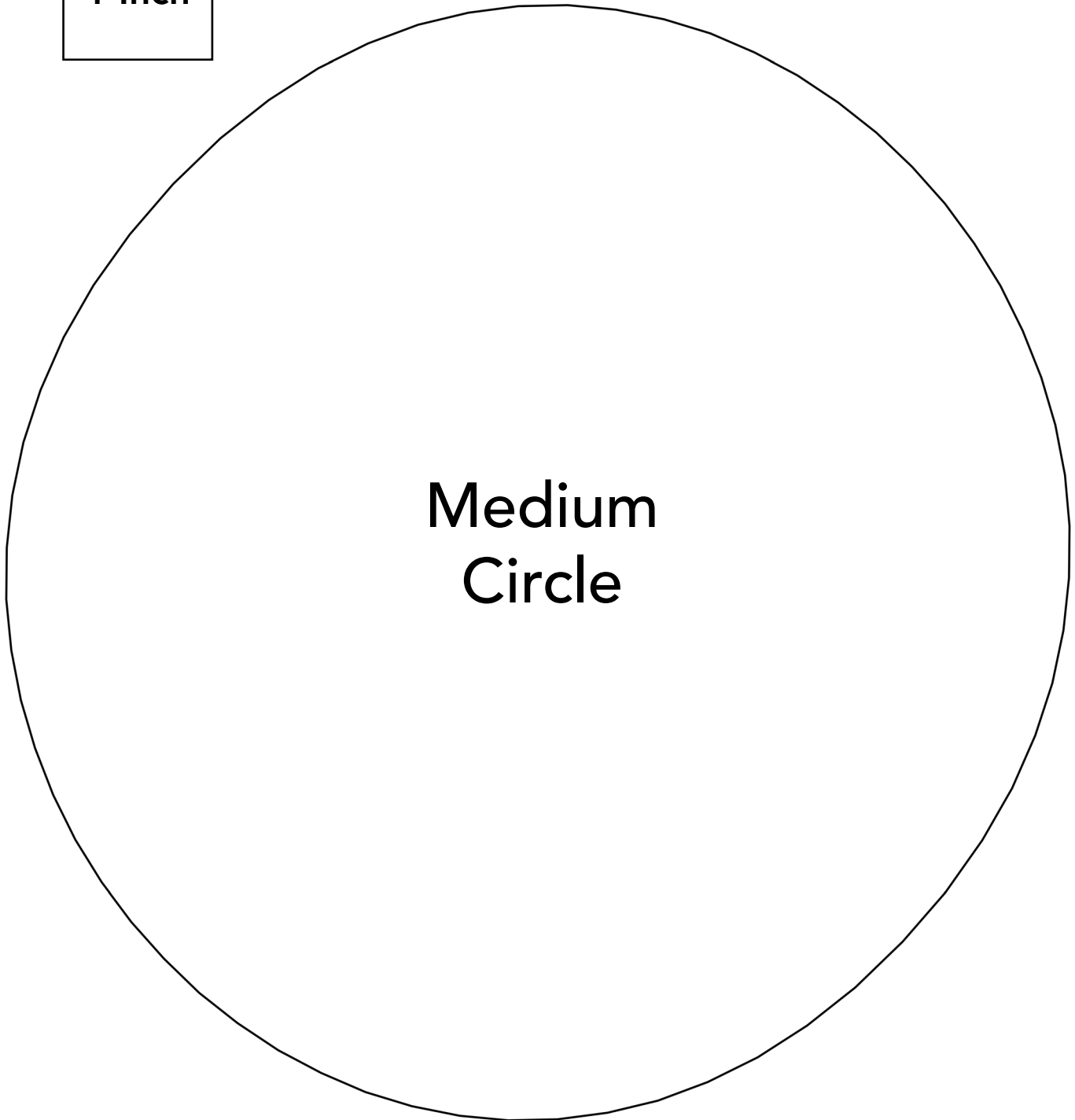
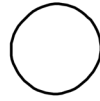
19. Sandwich quilt with batting and backing. Baste quilt layers together using your preferred method.
20. Quilt as desired.
21. Bind quilt using (6) Fabric F 2 1/4" x WOF strips.



# A NEW SHERIFF IN TOWN



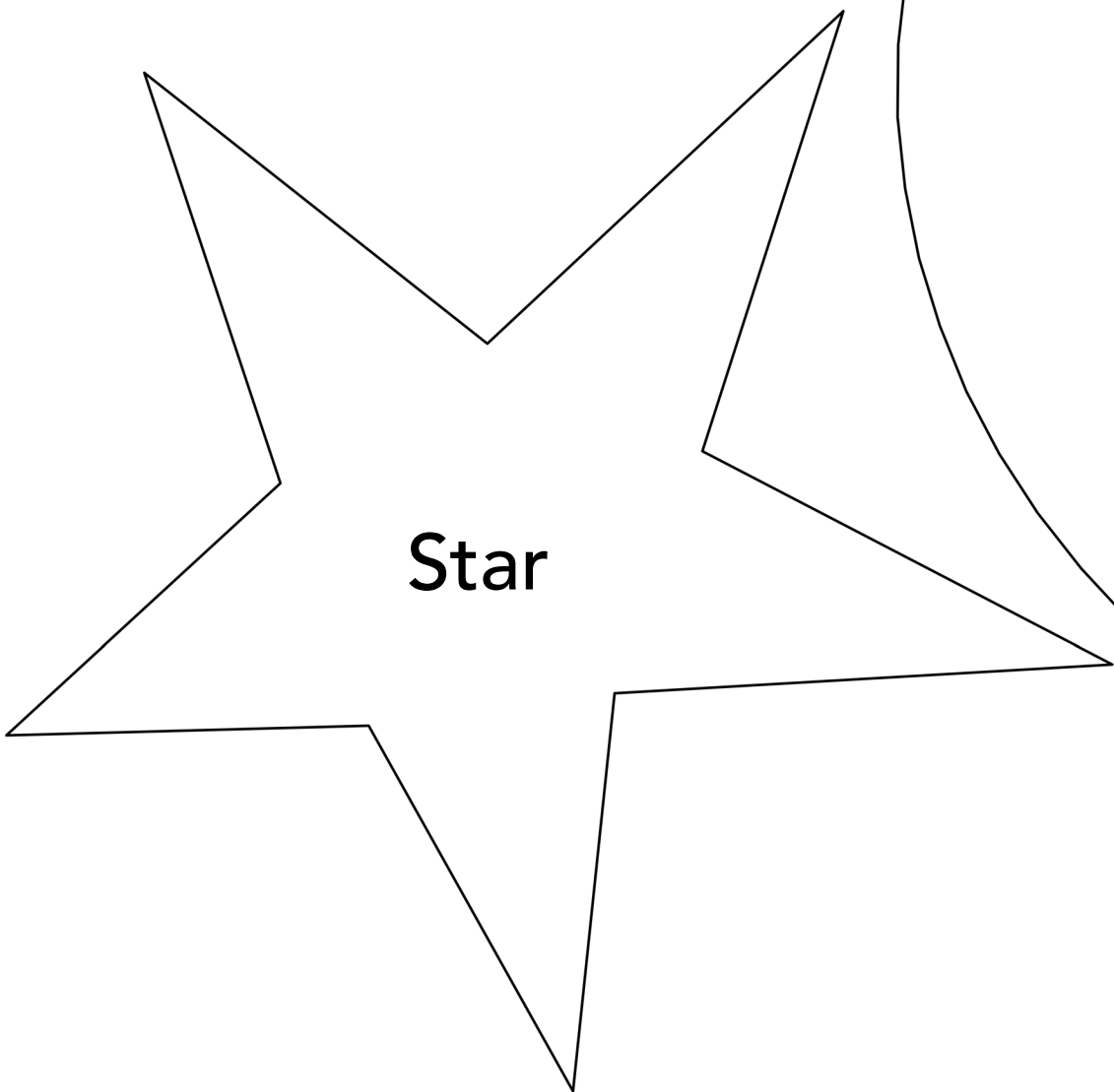
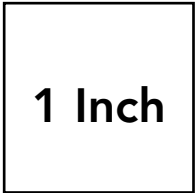
Small  
Circle



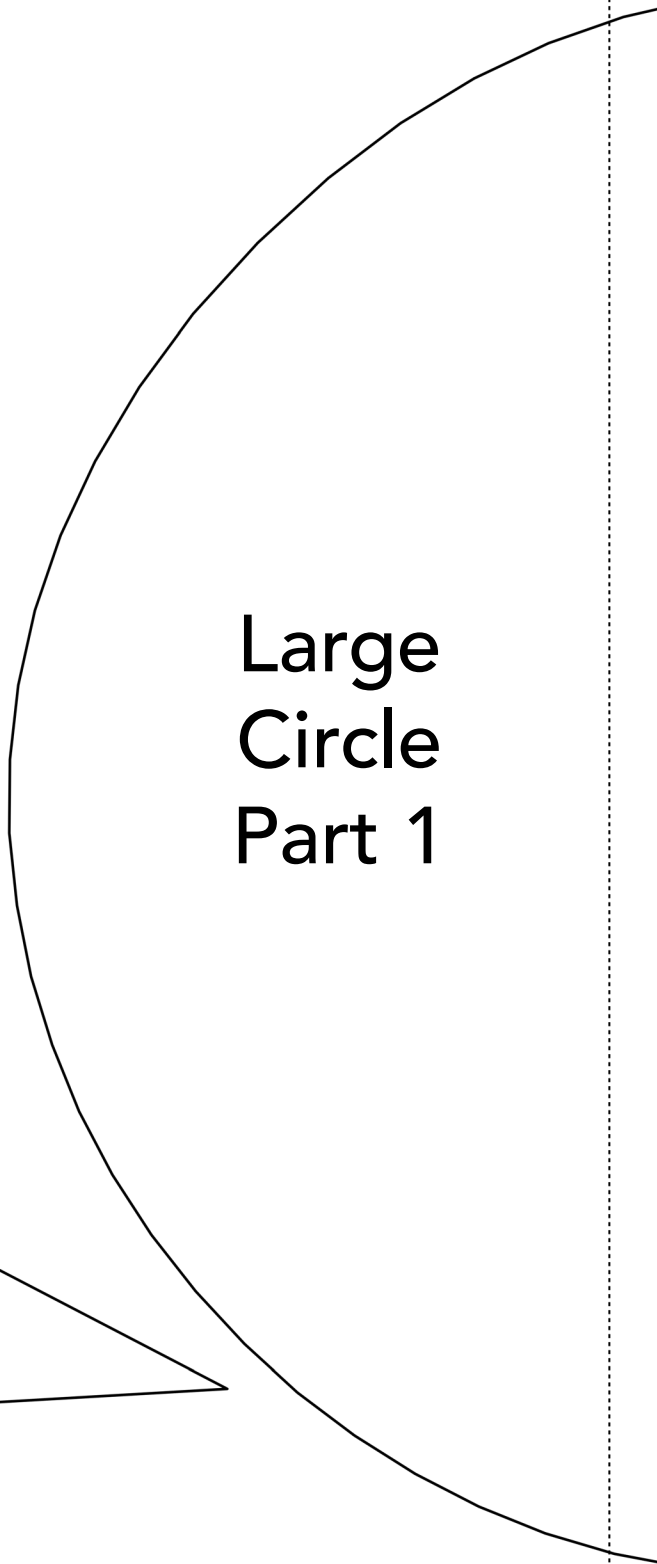




# A NEW SHERIFF IN TOWN



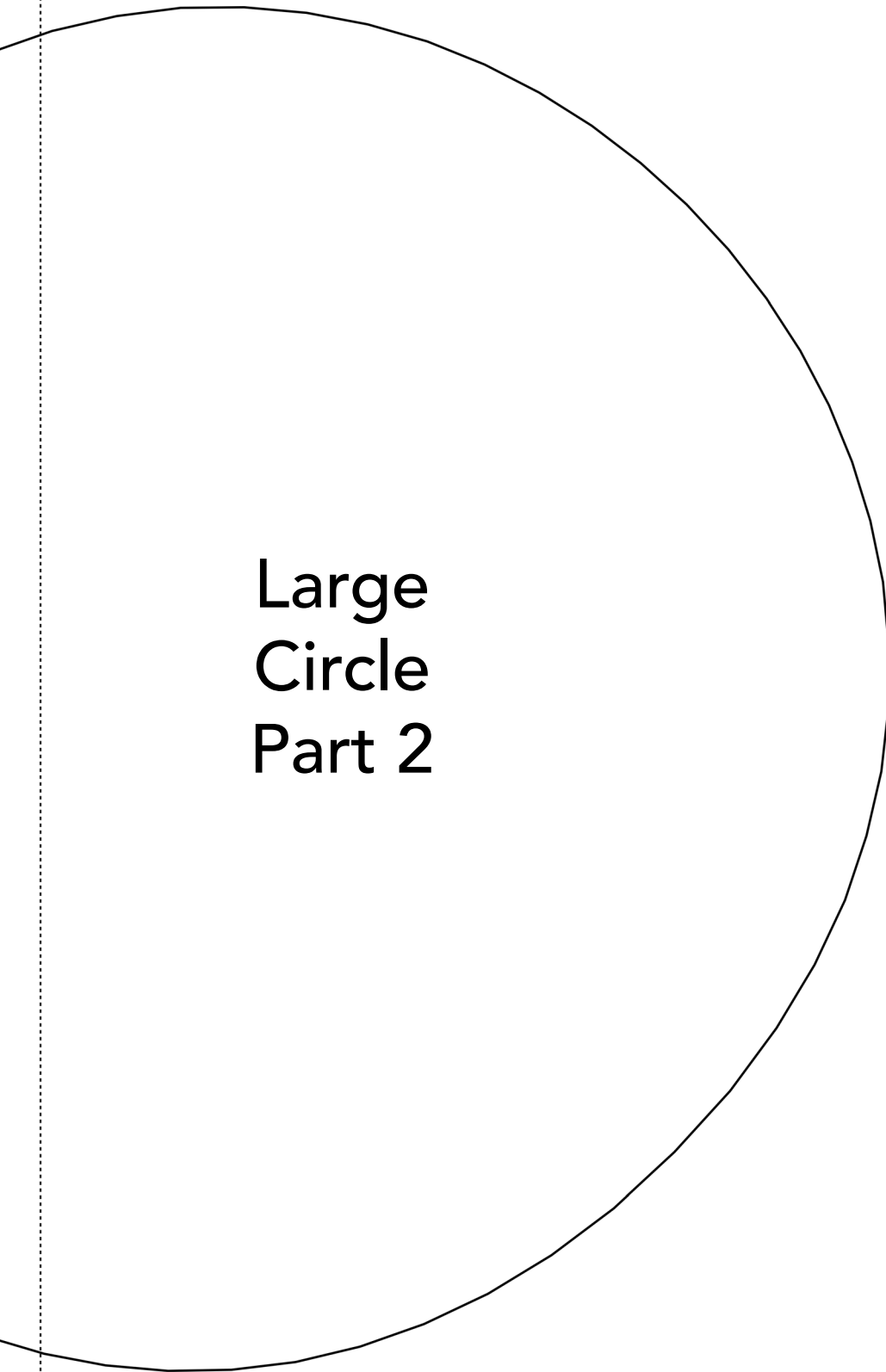
**Star**



**Large  
Circle  
Part 1**



# A NEW SHERIFF IN TOWN



Large  
Circle  
Part 2

