

michael miller FABRICS

OMBRE SASHAY

SIZE: 50" X 56-1/2" • LEVEL: INTERMEDIATE • PATTERN BY: SUSAN EMORY • FABRIC COLLECTION: QUINTESENTIALS OMBRE BORDERS



PLEASE NOTE: BEFORE BEGINNING YOUR PROJECT, CHECK FOR ANY PATTERN UPDATES AT MICHAELMILLERFABRICS.COM
212.704.0774 | info@michaelmillerfabrics.com | www.michaelmillerfabrics.com



www.michaelmillerfabrics.com

OMBRE SASHAY

50" x 56-1/2"



FABRIC A
CM9234 Cobalt
2/3 yard



FABRIC B
CM9234 Jade
2/3 yard



FABRIC C
CM9234 Pink
2/3 yard



FABRIC D
CM9234 Orange
2/3 yard



FABRIC E
CM9234 Royal
1-1/2 yards
(border and binding)



FABRIC F
CX9236 Jade
3-1/2 yards

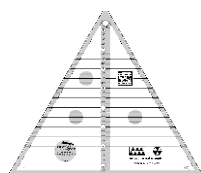
OR



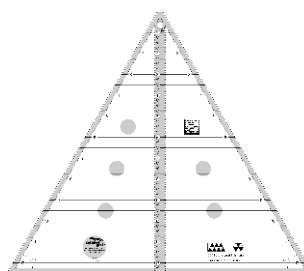
FABRIC F
WBX9169 Navy
(wide backing)
2 yards

This pattern uses the Creative Grids™
60° Triangle 8-1/2" Quilt Ruler

(you can also use the CGRT12560 and follow the 8-1/2" mark)



(#CGRT60)



(#CGRT12560)



OMBRE SASHAY

WOF = Width of Fabric Selvage to Selvage

KEY	BLOCK CUTTING INSTRUCTIONS
A-D	Following instructions below to cut 60-degree triangles and half-triangles.

From each of Fabrics A-D, cut: [2] 8-1/2" x WOF strips.

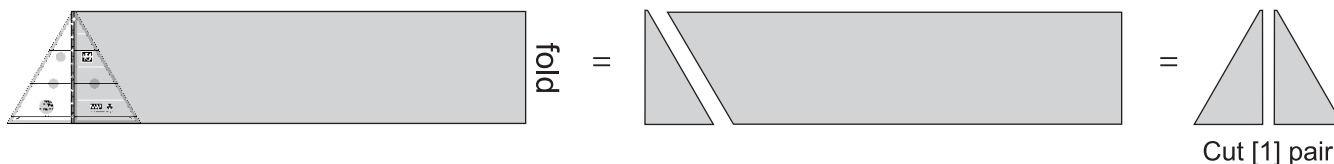
For each strip, leave the 8-1/2" strip folded with selvages together.
Cut off selvages.



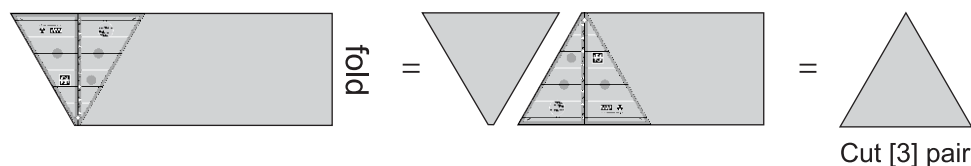
You will first cut a pair of mirrored 30° triangles:

Line the top edge of the ruler with the top edge of the fabric strip,
and the bottom of the ruler with the bottom edge of the fabric strip.

Line the cut edges of the fabric with the LEFT vertical dashed line on the ruler,
then cut one pair of 30° triangles. See ruler instructions from Creative Grids, if necessary.



Keep the strip folded and rotate ruler to cut [3] pair of 60° triangles, for a total of [6] triangles.



From each of Fabrics A-D you will have (4) 30° triangles and (12) 60° triangles. Note: You will have extra 30° triangles.

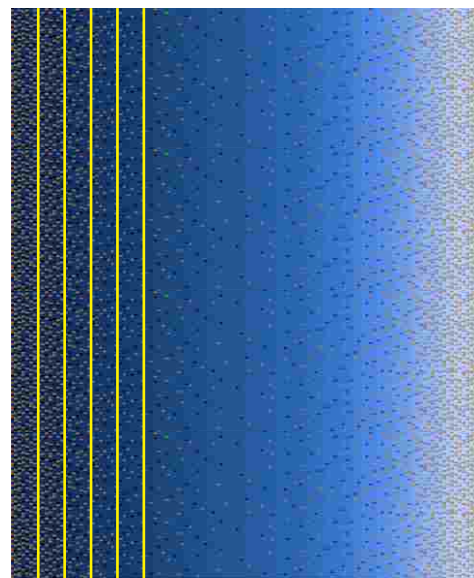
See page 3 for instructions on cutting Fabric E.

KEY	BORDER CUTTING INSTRUCTIONS
E	Following instructions below to cut border and binding.

Note: You need the full width of fabric for borders and binding.

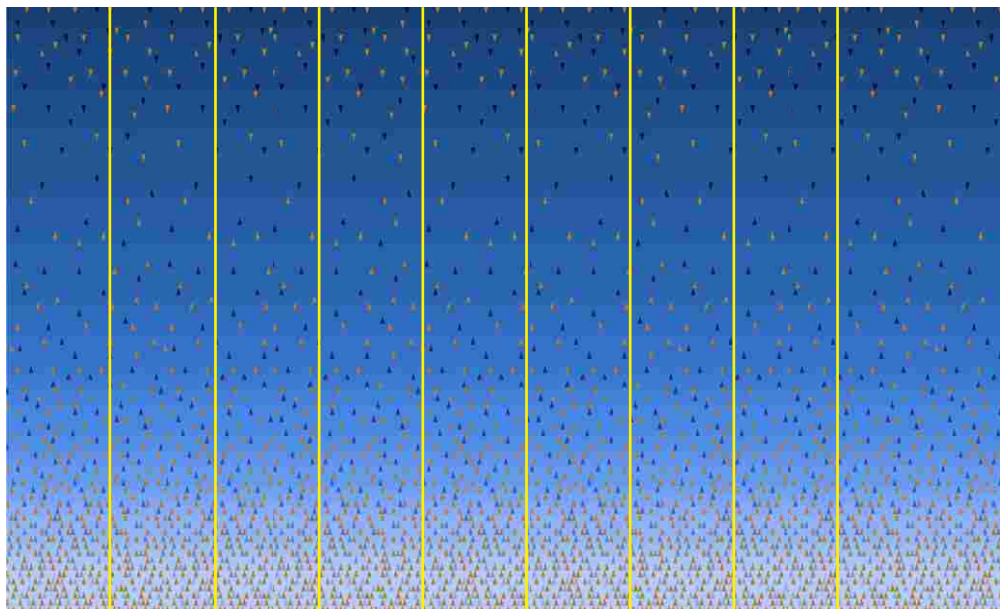
Carefully trim selvages from the darker side of Fabric E.

Cut (5) 2-1/2" lengthwise strips from the darker side of Fabric E.
Set these strips aside for binding.



Turn remainder of fabric so the lighter side of Fabric E is facing you.

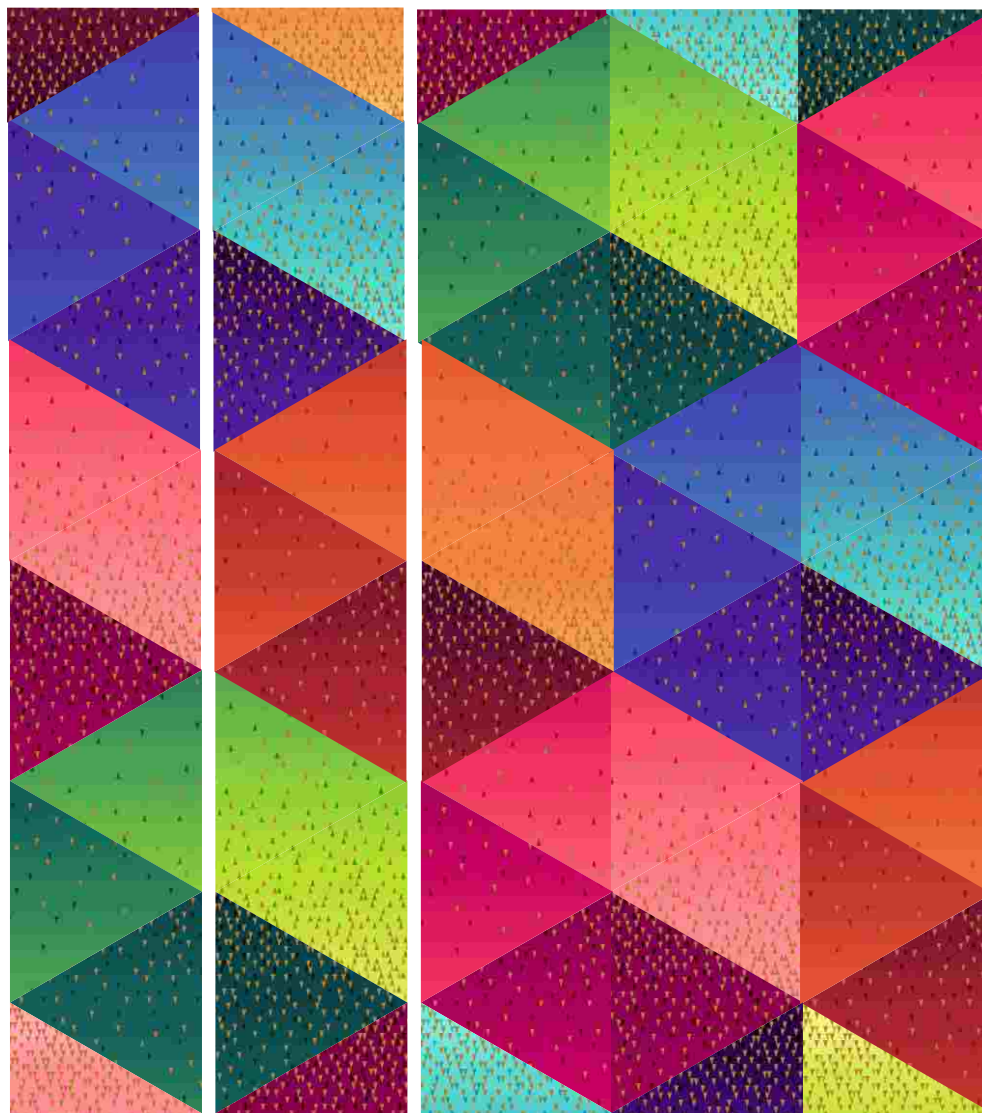
Cut (8) 5-1/2" strips for borders, as shown.



ASSEMBLING QUILT TOP:

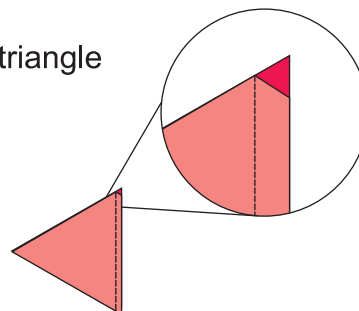
Note: when triangles were cut, the straight of grain is opposite the notched corner. When sewing and pressing be careful not to stretch the bias edges.

Arrange [5] vertical rows of 30° and 60° triangles, as shown, and sew (see tip below before sewing). Press seams open. Sew rows together to complete quilt center.



TIP FOR SEWING TRIANGLES:

Align the edges of triangles with the notched end of the top triangle on a pointed end of the bottom triangle (see diagram) and sew using a scant 1/4" seam.

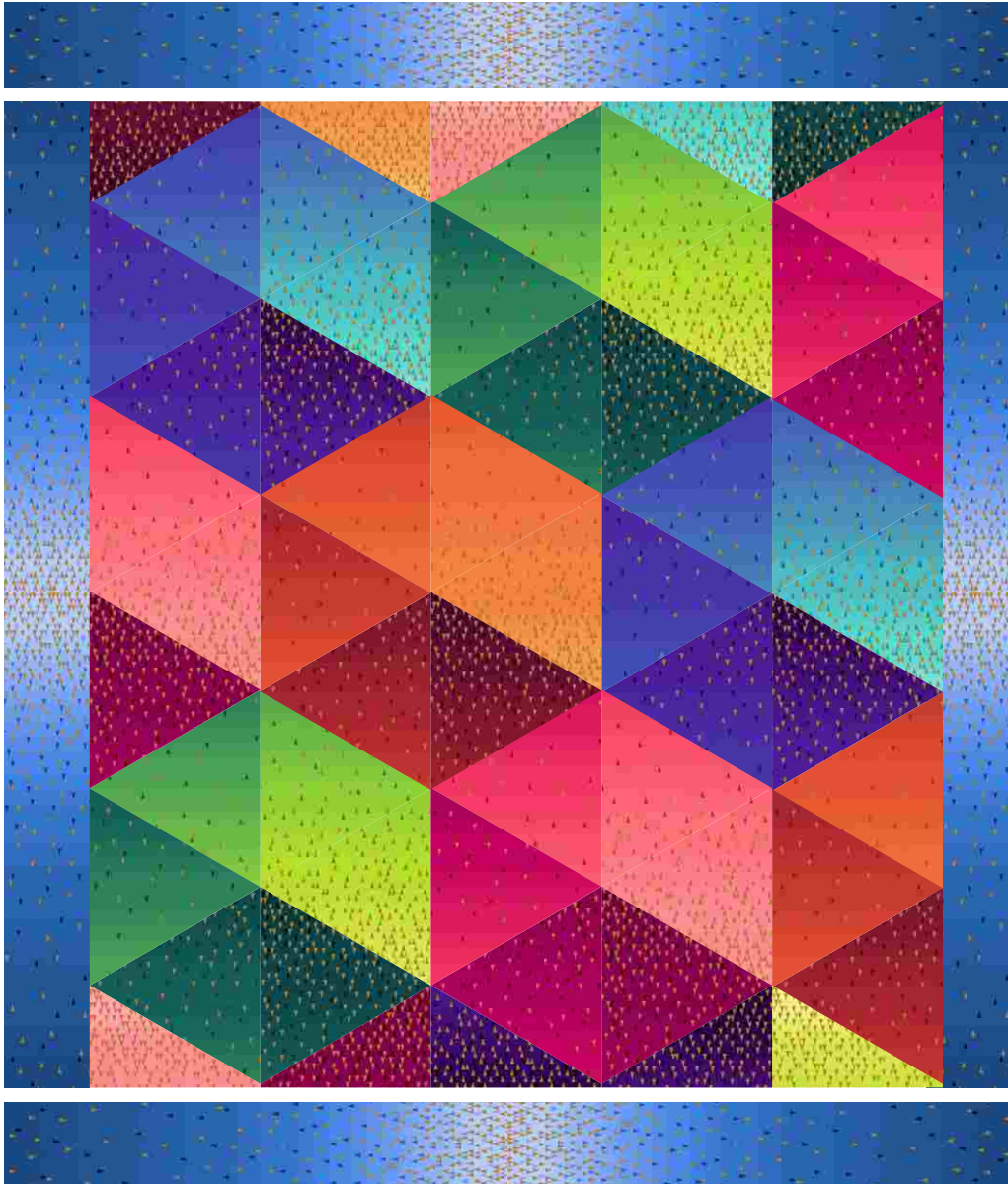


BORDERS:

Sew (2) 5-1/2" border strips together along the lighter side of Fabric E. Press seam in either direction. Repeat to make a total of (4) pairs of strips.

For side borders, cut (2) borders that are 5-1/2" x 47" (measure 23-1/2" from seam on both sides to center lighter side of Fabric E in border). Sew borders to sides of quilt center and press toward borders.

For top/bottom borders, cut (2) borders that are 5-1/2" x 50-1/2" (measure 25-1/4" from seam on both sides to center lighter side of Fabric E in border). Sew borders to top and bottom of quilt center and press toward borders to complete quilt top.

**FINISHING:**

Layer quilt top, batting and backing together to form quilt sandwich. Baste and quilt as desired. Bind using [5] 2-1/2" Fabric E strips.