

michael miller FABRICS

ALPHABET SOUP

SIZE : 48" x 68" • LEVEL: BEGINNER • PATTERN BY: CHARISMA HORTON • FABRIC COLLECTION: VINTAGE TREASURES



PLEASE NOTE: BEFORE BEGINNING YOUR PROJECT, CHECK FOR ANY PATTERN UPDATES AT MICHAELMILLERFABRICS.COM

212.704.0774 • info@michaelmillerfabrics.com • www.michaelmillerfabrics.com



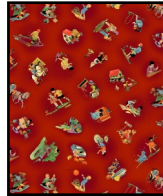
ALPHABET SOUP



FABRIC A
CX9454 Playful
Check Beige
1 yard



FABRIC B
CX9453 Playful
Letters Black
1 ¼ yards



FABRIC C
DCX9451
Children at Play
Red 3 ¼ yards



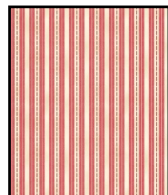
FABRIC D
DCX9452 Toy
Story Blue
¼ yard



FABRIC E
DCX9452 Toy
Story Red
¼ yard



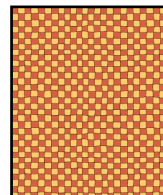
FABRIC F
CX9455 Pretty
Lines Blue
¼ yard



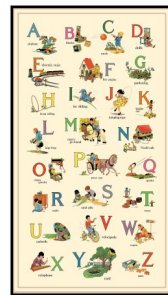
FABRIC G
CX9455 Pretty
Lines Red
¼ yard



FABRIC H
CX9453 Playful
Letters Red
¼ yard



FABRIC I
CX9454 Playful
Check Orange
¼ yard



FABRIC J
DCX9435
Alphabet List
Multi 1 panel

ASSEMBLY INSTRUCTIONS:

Cut:

Fabric A 4 @ 5 ¼" x 5 ¼"
 34 @ 4 ⅞" x 4 ⅞"
 16 @ 2 ½" x 2 ½"

Fabric B 10 @ 4 ⅞" x 4 ⅞"
 6 @ 4 ½" x wof* - borders
 16 @ 2 ⅞" x 2 ⅞"
 6 @ 2 ½" x wof* - binding

Fabric C 2 @ 56" x wof* - backing
 4 @ 4 ½" x 4 ½"

Fabric D 4 @ 4 ⅞" x 4 ⅞"

Fabric E 4 @ 4 ⅞" x 4 ⅞"

Fabric F 4 @ 4 ⅞" x 4 ⅞"

Fabric G 4 @ 4 ⅞" x 4 ⅞"

Fabric H 4 @ 4 ⅞" x 4 ⅞"

Fabric I 4 @ 4 ⅞" x 4 ⅞"

Fabric J 1 panel

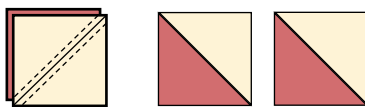
*wof = width of fabric



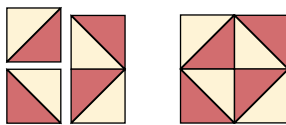
ALPHABET SOUP

Sew:

1. Draw a diagonal line on the back of each Fabric A $4 \frac{7}{8}$ " square. Pair with all the other $4 \frac{7}{8}$ " squares, right sides together, and sew $\frac{1}{4}$ " on either side of the line. Cut on line. Make 68 half square triangles.



2. Sew half square triangles into sixteen $8 \frac{1}{2}$ " Broken Dishes blocks. Sew two additional half blocks.



3. Gather fabric A $2 \frac{1}{2}$ " squares, $5 \frac{1}{4}$ " squares, fabric B $2 \frac{7}{8}$ " squares and fabric C $4 \frac{1}{2}$ " squares. Draw a diagonal line on the back of the $2 \frac{7}{8}$ " squares.

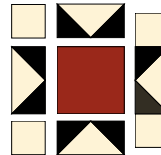
4. Lay two $2 \frac{7}{8}$ " squares on opposite corners of a $5 \frac{1}{4}$ " square. Sew $\frac{1}{4}$ " on either side of the line and cut on line.



5. Lay another small square on the corner, sew $\frac{1}{4}$ " on either side of the line and cut on line. Make 16.



6. Sew four $8 \frac{1}{2}$ " Star blocks together.



7. Sew a strip onto the panel bottom if necessary to make it $24 \frac{1}{2}$ " x $44 \frac{1}{2}$ ".

8. Sew three Broken Dishes blocks in a row, add a half block and then two more Broken Dishes blocks. Make two (side block borders).

9. Sew side block borders onto panel sides.

10. Sew three Broken Dishes blocks in a row with a Star block on either end. Make two (top and bottom block borders).

11. Sew top and bottom block borders to quilt center.

12. Sew fabric B $4 \frac{1}{2}$ " strips together end to end. Cut into 2 @ $4 \frac{1}{2}$ " x $48 \frac{1}{2}$ " (top and bottom borders) and 2 @ $4 \frac{1}{2}$ " x $60 \frac{1}{2}$ " (side borders).

13. Sew side borders onto quilt center and then top and bottom borders.

14. Layer quilt top, batting and backing together to form a quilt sandwich. Baste and quilt as desired.

15. Bind using fabric B 6 @ $2 \frac{1}{2}$ " strips.