

AND THE BAND PLAYS ON QUILT

SIZE: 79"Wx 87"H • LEVEL: CONFIDENT BEGINNER • PATTERN BY: WENDY SHEPPARD

FABRIC COLLECTION: WOODLAND MUSICIANS • FREE PATTERN AVAILABLE ON: MICHAELMILLERFABRICS.COM



MELON COLORWAY QUILT:



BREEZE COLORWAY QUILT:



THIS IS A DIGITAL REPRESENTATION OF THE QUILT TOP, FABRIC MAY VARY.

PLEASE NOTE: BEFORE BEGINNING YOUR PROJECT, CHECK FOR ANY PATTERN UPDATES AT MICHAELMILLERFABRICS.COM'S FREE PROJECTS SECTION.

p.212.704.0774 | info@michaelmillerfabrics.com | www.michaelmillerfabrics.com



AND THE BAND PLAYS ON QUILT

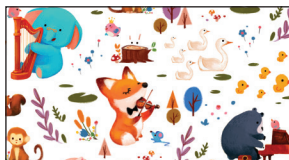
MELON COLORWAY QUILT:



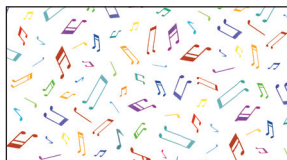
FABRIC A
SC5333-BRIGHT WHITE
COTTON COUTURE
1-1/4 YARDS



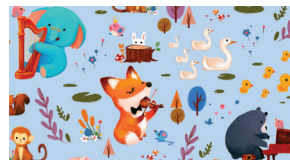
FABRIC B
DDC9011-BLACK
WOODLAND ENSEMBLE
1 REPEAT OR 2/3 YARD



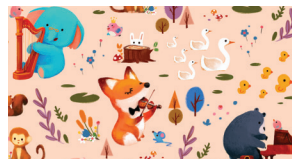
FABRIC C
DC9012-BRIGHT WHITE
FOREST JAM
3/8 YARD



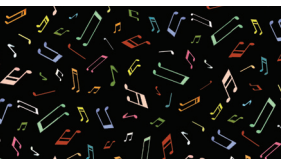
FABRIC D
DC9013-BRIGHT WHITE
MUSICAL NOTES
3/8 YARD



FABRIC E
DC9012-BREEZE
FOREST JAM
3/8 YARD



FABRIC F
DC9012-MELON
FOREST JAM
3/8 YARD



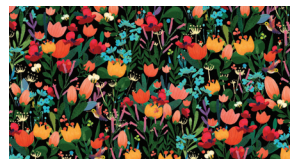
FABRIC G
DC9013-BLACK
MUSICAL NOTES
1 YARD



FABRIC H
DC9016-MELON
WOODLAND ANIMALS
5/8 YARD



FABRIC I
DC9018-MELON
TONE ON TONE
1-7/8 YARDS



FABRIC J
DC9014-BLACK
FLOWER FUSION
1/2 YARD



FABRIC K
DC9018-MARIGOLD
TONE ON TONE
1/2 YARD



FABRIC L
DC9018-ISLE
TONE ON TONE
3/8 YARD



FABRIC M
DC9018-RED
TONE ON TONE
1-5/8 YARDS*
(INCLUDES BINDING)

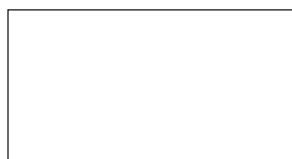


FABRIC N
DC9018-ROYAL
TONE ON TONE
1/4 YARD

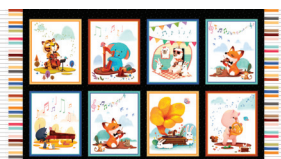


(BACKING)
YOUR CHOICE
5-3/8 YARDS

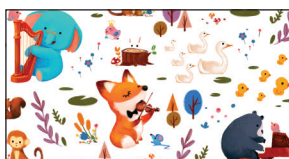
BREEZE COLORWAY QUILT:



FABRIC A
SC5333-BRIGHT WHITE
COTTON COUTURE
1-1/4 YARDS



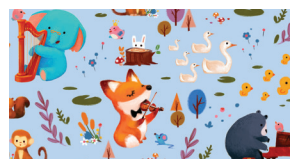
FABRIC B
DDC9011-BLACK
WOODLAND ENSEMBLE
1 REPEAT OR 2/3 YARD



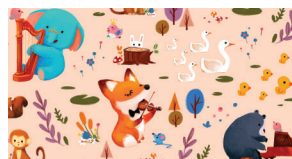
FABRIC C
DC9012-BRIGHT WHITE
FOREST JAM
3/8 YARD



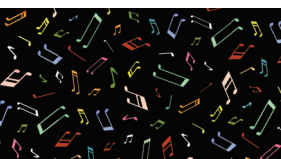
FABRIC D
DC9013-BRIGHT WHITE
MUSICAL NOTES
3/8 YARD



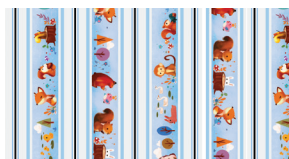
FABRIC E
DC9012-BREEZE
FOREST JAM
3/8 YARD



FABRIC F
DC9012-MELON
FOREST JAM
3/8 YARD



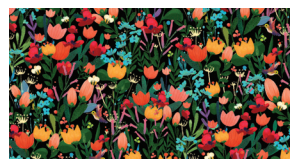
FABRIC G
DC9013-BLACK
MUSICAL NOTES
1 YARD



FABRIC H
DC9016-BREEZE
WOODLAND ANIMALS
5/8 YARD



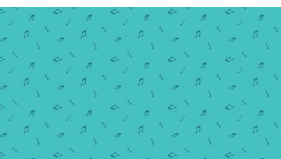
FABRIC I
DC9018-BREEZE
TONE ON TONE
1-7/8 YARDS



FABRIC J
DC9014-BLACK
FLOWER FUSION
1/2 YARD



FABRIC K
DC9018-RED
TONE ON TONE
1/2 YARD



FABRIC L
DC9018-ISLE
TONE ON TONE
3/8 YARD



FABRIC M
DC9018-MARIGOLD
TONE ON TONE
1-5/8 YARDS*
(INCLUDES BINDING)



FABRIC N
DC9018-ROYAL
TONE ON TONE
1/4 YARD



(BACKING)
YOUR CHOICE
5-3/8 YARDS



AND THE BAND PLAYS ON QUILT

KEY	CUTTING INSTRUCTIONS
A	<p>a. pieced blocks (16) 1 1/2" x wof. Subcut (64) 1 1/2" x 10 1/2" rectangles.</p> <p>b. inner border #1 (7) 2" x wof. Piece strips and subcut (2) 2" x 66 1/2" and (2) 2" x 71 1/2" strips.</p>
B	<p>a. pieced blocks (8) 7 1/2" x 9 1/2" panel rectangles, fussy cut.</p>
C	<p>a. pieced blocks (1) 9 1/2" x wof. Subcut (2) 7 1/2" x 9 1/2" rectangles</p>
D	<p>a. pieced blocks (1) 9 1/2" x wof. Subcut (2) 7 1/2" x 9 1/2" rectangles</p>
E	<p>a. pieced blocks (1) 9 1/2" x wof. Subcut (2) 7 1/2" x 9 1/2" rectangles</p>
F	<p>a. pieced blocks (1) 9 1/2" x wof. Subcut (2) 7 1/2" x 9 1/2" rectangles</p>
G	<p>a. outer border (8) 3 1/2" x wof. Piece strips and subcut (2) 3 1/2" x 79 1/2" and (2) 3 1/2" x 81 1/2" strips.</p>
H	<p>a. inner border #2 (8) 2 1/2" x wof. Piece strips and subcut (2) 2 1/2" x 70 1/2" and (2) 2 1/2" x 74 1/2" strips.</p>
I	<p>a. pinwheel cornerstones (4) 2 1/2" x wof. Subcut (50) 2 1/2" x 2 1/2" squares.</p> <p>b. horizontal sashing rectangles (7) 3 1/2" x wof. Subcut (20) 3 1/2" x 12 1/2" rectangles.</p> <p>c. vertical sashing rectangles (2) 14 1/2" x wof. Subcut (20) 3 1/2" x 14 1/2" rectangles.</p>
J	<p>a. pieced blocks (4) 1" x wof. Subcut (8) 1" x 8 1/2" and (8) 1" x 9 1/2" rectangles. (6) 1 1/2" x wof. Subcut (16) 1 1/2" x 12 1/2" rectangles.</p> <p>b. pinwheel cornerstones (1) 2 1/2" x wof. Subcut (10) 2 1/2" x 2 1/2" squares.</p>

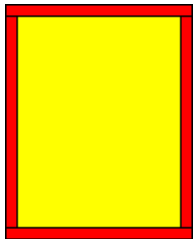


AND THE BAND PLAYS ON QUILT

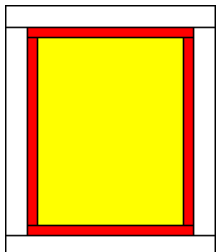
K	<p>a. pieced blocks (4) 1" x wof. Subcut (8) 1" x 8 1/2" and (8) 1" x 9 1/2" rectangles. (6) 1 1/2" x wof. Subcut (16) 1 1/2" x 12 1/2" rectangles. b. pinwheel cornerstones (1) 2 1/2" x wof. Subcut (10) 2 1/2" x 2 1/2" squares.</p>
L	<p>a. pieced blocks (6) 1 1/2" x wof. Subcut (16) 1 1/2" x 12 1/2" rectangles. b. pinwheel cornerstones (1) 2 1/2" x wof. Subcut (10) 2 1/2" x 2 1/2" squares.</p>
M	<p>a. pieced blocks (4) 1" x wof. Subcut (8) 1" x 8 1/2" and (8) 1" x 9 1/2" rectangles. (6) 1 1/2" x wof. Subcut (16) 1 1/2" x 12 1/2" rectangles. b. pinwheel cornerstones (1) 2 1/2" x wof. Subcut (10) 2 1/2" x 2 1/2" squares. c. inner border #3 (8) 2" x wof. Piece strips and subcut (2) 2" x 73 1/2" and (2) 2" x 78 1/2" strips. d. binding (9) 2 1/4" x wof. Piece strips to make a continuous binding strip.</p>
N	<p>a. pieced blocks (4) 1" x wof. Subcut (8) 1" x 8 1/2" and (8) 1" x 9 1/2" rectangles. b. pinwheel cornerstones (1) 2 1/2" x wof. Subcut (10) 2 1/2" x 2 1/2" squares.</p>

Constructing pieced blocks

1. Sew (2) 1" x 9 1/2" **Fabric 2** rectangles to the opposite long sides of (1) 7 1/2" x 9 1/2" **Fabric 1** rectangle, followed by (2) 1" x 8 1/2" **Fabric 2** rectangles to the remaining opposite short sides of the same **Fabric 1** rectangle.

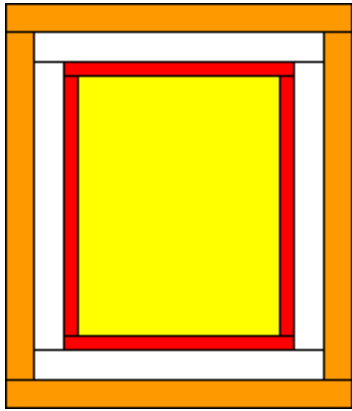


2. Sew (2) 1 1/2" x 10 1/2" **Fabric A** rectangles to the opposite sides of block center, followed by (2) 1 1/2" x 10 1/2" **Fabric A** rectangles to the remaining opposite short sides of block center.



AND THE BAND PLAYS ON QUILT

3. Sew (2) 1 1/2" x 12 1/2" **Fabric 3** rectangles to the opposite long sides of block center, followed by (2) 1 1/2" x 12 1/2" **Fabric 3** rectangles to the remaining opposite short sides of block center to complete (1) block. Block should measure 12 1/2" x 14 1/2" raw edge to raw edge.

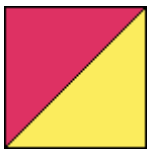


4. Make a total number of blocks for the following **Fabric1/Fabric2/Fabric3** combinations:

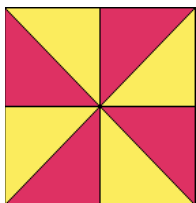
	1 block								2 blocks		4 blocks
Fabric1	C	F	D	B	C	F	D	B	B	E	B
Fabric2	M	M	M	M	K	K	N	N	K	N	J
Fabric3	L	L	L	L	J	J	M	M	J	M	K

Constructing pinwheel cornerstones

1. Draw a diagonal line on the wrong side of (1) 2 1/2" x 2 1/2" **Fabric I** square. Place square, right sides together, on (1) 2 1/2" x 2 1/2" **print** square. Sew 1/4" away from, and on right and left sides of drawn line. Cut along drawn line to yield (2) HST units. Align diagonal seams of HST units against 45 degree angle line on quilting ruler, and trim HST units to measure 2" x 2" raw edge to raw edge.



Make a total of (4) HST units, and sew units together to make (1) pinwheel cornerstone, as shown. Cornerstone should measure 3 1/2" x 3 1/2" raw edge to raw edge.



2. Make a total of (5) pinwheel cornerstones for each of the following **Fabric I/print** combinations: **I/J, I/K, I/L, I/M and I/N.**

AND THE BAND PLAYS ON QUILT

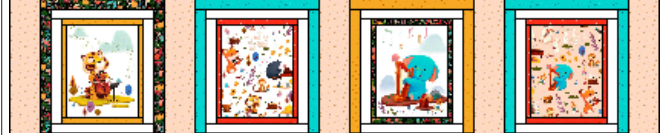
Quilt center assembly

1. Pieced rows. Refer to quilt image for placement guide, arrange and sew together (4) pieced blocks and (5) $3\frac{1}{2}'' \times 14\frac{1}{2}''$ **Fabric I** sashing rectangles to make a pieced row. Make a total of (4) pieced rows. Row 1 is shown below.

Breeze:



Melon:



2. Pieced sashing rows. Refer to quilt image for placement guide, arrange and sew together (5) pinwheel cornerstones and (4) $3\frac{1}{2}'' \times 12\frac{1}{2}''$ **Fabric I** sashing rectangles to make a pieced sashing row. Make a total of (5) pieced sashing rows.

Breeze:



Melon:



3. Sew together pieced rows and pieced sashing rows to complete quilt center.

Breeze:



Melon:



AND THE BAND PLAYS ON QUILT

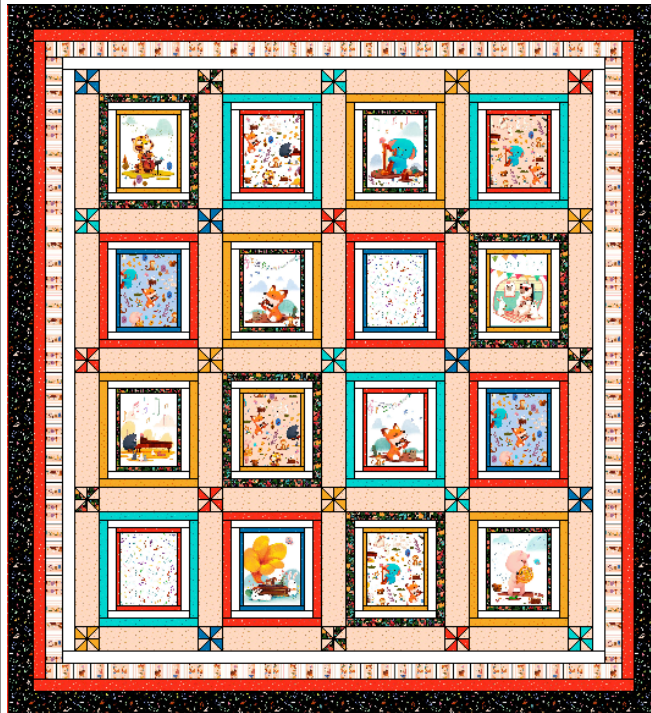
Quilt top assembly:

1. Inner border #1. Sew (2) 2" x 71 1/2" **Fabric A** strips to the opposite long sides of quilt center, followed by (2) 2" x 66 1/2" **Fabric A** strips to the remaining opposite short sides of quilt center.
2. Inner border #2. Sew (2) 2 1/2" x 74 1/2" **Fabric H** strips to the opposite long sides of quilt center, followed by (2) 2 1/2" x 70 1/2" **Fabric H** strips to the remaining opposite short sides of quilt center.
3. Inner border #3. Sew (2) 2" x 78 1/2" **Fabric M** strips to the opposite long sides of quilt center, followed by (2) 2" x 73 1/2" **Fabric M** strips to the remaining opposite short sides of quilt center.
4. Outer border. Sew (2) 3 1/2" x 81 1/2" **Fabric G** strips to the opposite long sides of quilt center, followed by (2) 3 1/2" x 79 1/2" **Fabric G** strips to the remaining opposite short sides of quilt center to complete quilt top.

Breeze:



Melon:



FINISHING:

1. With the backing fabric laying taut, place batting and then quilt top to form quilt sandwich. Baste sandwich.
2. Quilt as desired.
3. Bind to finish quilt.