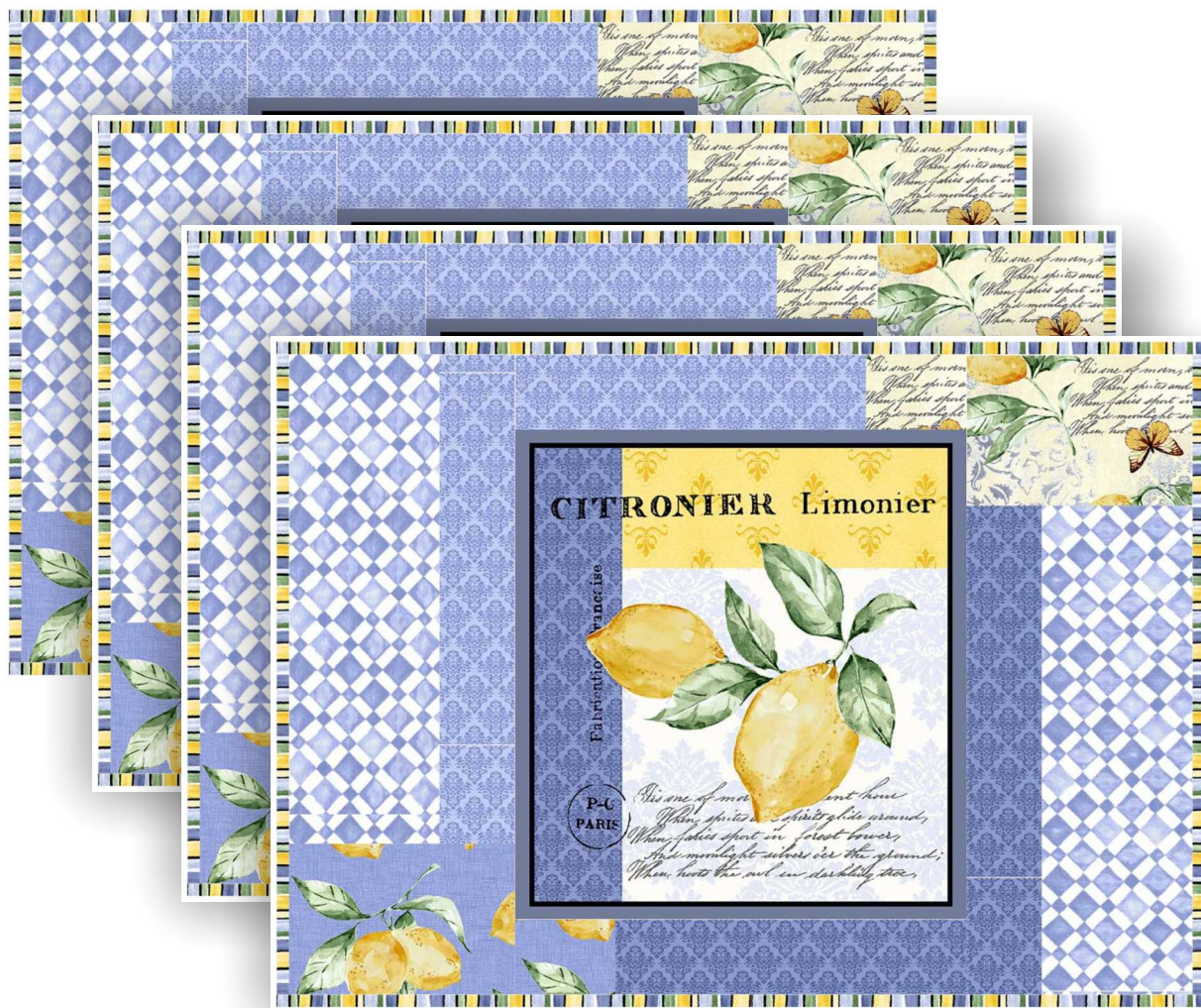


michael miller FABRICS

LIMONCELLO PLACE MATS

SIZE: PLACE MATS 13" X 19" • LEVEL: INTERMEDIATE • PATTERN BY: KRISTINE POOR • FABRIC COLLECTION: LIMONCELLO



PLEASE NOTE: BEFORE BEGINNING YOUR PROJECT, CHECK FOR ANY PATTERN UPDATES AT MICHAELMILLERFABRICS.COM
212.704.0774 | info@michaelmillerfabrics.com | www.michaelmillerfabrics.com

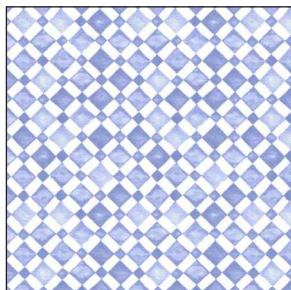


LIMONCELLO PLACE MATS

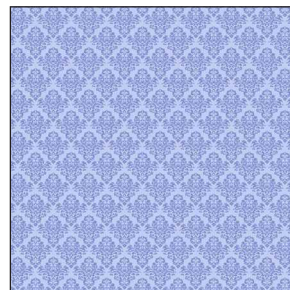
SET OF FOUR: 13" X 19"



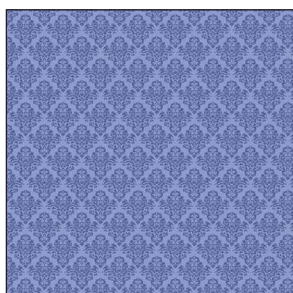
FABRIC A
CX9255 Citrus Panel
1 Panel



FABRIC B
CX9257 Capri Blue
1/4 yard



FABRIC C
CX9254 Amalfi Ice
1/4 yard



FABRIC D
CX9254 Amalfi Blue
1/4 yard



FABRIC E
CX9248 Citrons Citrus
1/8 yard



FABRIC F
CX9249 Limoni Blue
1 yard
(includes backing)



FABRIC G
CX9251 Citrus Stripe Blue
1/2 yard
(includes binding)



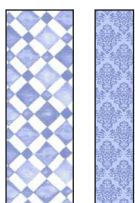
LIMONCELLO PLACE MATS

WOF = Width of Fabric Selvage to Selvage

KEY	CUTTING INSTRUCTIONS
A	FUSSY CUT (4) 9-1/2" x 10-1/2" rectangles for place mat centers.
B	(2) 3-1/2" x WOF strips; subcut (8) 3-1/2" x 10-1/2" rectangles.
C	(2) 2" x WOF strips; subcut (4) 2" x 10-1/2" rectangles C-1 and (4) 2" x 7-1/2" rectangles C-2
D	(2) 2" x WOF strips; subcut (4) 2" x 10-1/2" rectangles D-1 and (4) 2" x 7-1/2" rectangles D-2
E	(1) 3-1/2" x WOF strip; subcut (4) 3-1/2" x 5" rectangles E-1 and (4) 2-1/2" x 2" rectangles E-2
F	(1) 3-1/2" x WOF strip; subcut (4) 3-1/2" x 5" rectangles F-1 and (4) 2-1/2" x 2" rectangles F-2 ; from remaining, cut (2) 15" x WOF strips; subcut (4) 15" x 21" rectangles for placemat backing
G	(7) 2-1/2" x WOF strips for binding.

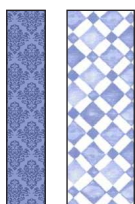
PIECING INSTRUCTIONS

Sew a Fabric B rectangle to a Fabric C rectangle **C-1**. Press toward Fabric C rectangle. Stitch Fabric F rectangle to end of pair. Pieced unit to measure 5" x 13-1/2". Repeat to make 4 total units.



Make 4

Sew a Fabric B rectangle to a Fabric D rectangle **D-1**. Press toward Fabric D rectangle. Stitch Fabric E rectangle to end of pair. Pieced unit to measure 5" x 13-1/2".



Make 4

PIECING INSTRUCTIONS, CONTINUED

Sew a Fabric C rectangle **C-2** to Fabric E rectangle **E-2**. Press toward Fabric C rectangle. Pieced strips to measure 2" x 9-1/2". Repeat to make 4 total strips.



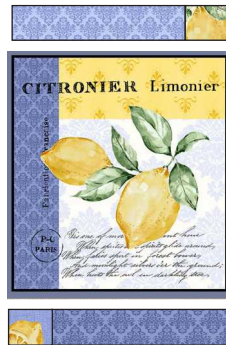
Make 4

Sew a Fabric D rectangle **D-2** to Fabric F rectangle **F-2**. Press toward Fabric C rectangle. Pieced strips to measure 2" x 9-1/2". Repeat to make 4 total strips.

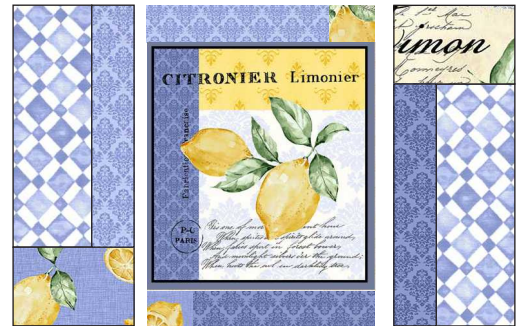


Make 4

Arrange all blocks as shown below. Sew narrow sections to the top and the bottom of the panel rectangle. Add larger sections to left and right side. Press all seams toward panel.



Make 4



Make 4

Layer pieced placemat, batting and backing together to form quilt sandwich. Baste and quilt as desired. Join (7) 2-1/2" Fabric G strips, then bind.



michael miller FABRICS

LIMONCELLO TABLE RUNNER

SIZE: TABLE RUNNER 14" X 49" • LEVEL: INTERMEDIATE • PATTERN BY: KRISTINE POOR • FABRIC COLLECTION: LIMONCELLO



PLEASE NOTE: BEFORE BEGINNING YOUR PROJECT, CHECK FOR ANY PATTERN UPDATES AT MICHAELMILLERFABRICS.COM
212.704.0774 | info@michaelmillerfabrics.com | www.michaelmillerfabrics.com



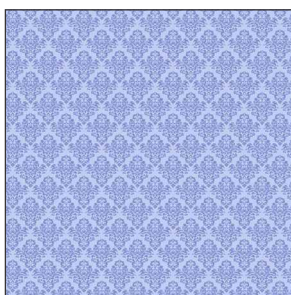
LIMONCELLO TABLE RUNNER

14" X 49"

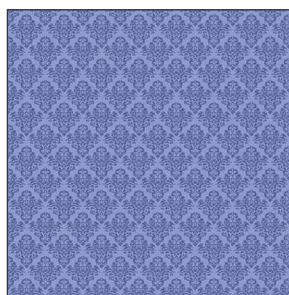
TABLE RUNNER:



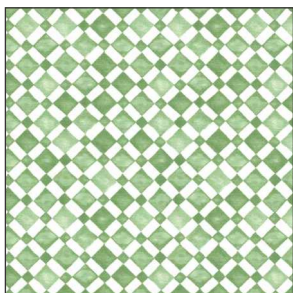
FABRIC A
CX9255 Citrus Panel
1 Panel



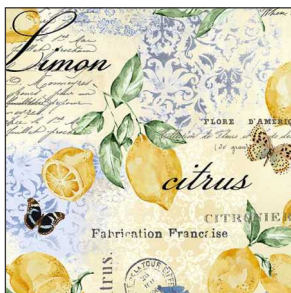
FABRIC B
CX9254 Amalfi Ice
1/4 yard



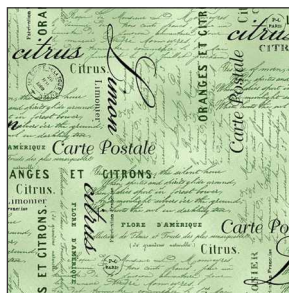
FABRIC C
CX9254 Amalfi Blue
1/4 yard



FABRIC D
CX9257 Capri Green
1/8 yard



FABRIC E
CX9248 Citrons Citrus
1/8 yard



FABRIC F
CX9252 Carte Postale Green
7/8 yard
(backing)



FABRIC G
CX9251 Citrus Stripe Blue
1/3 yard
(binding)



LIMONCELLO TABLE RUNNER

WOF = Width of Fabric Selvage to Selvage

KEY	CUTTING INSTRUCTIONS
A	FUSSY CUT (4) 9-1/2" x 10-1/2" rectangles for block centers.
B	(2) 2" x WOF strips; subcut (4) 2" x 11-1/2" rectangles B-1 ; (1) 2-1/2" x WOF strips; subcut (4) 2-1/2" x 7-1/2" rectangles B-2
C	(2) 2" x WOF strips; subcut (4) 2" x 11-1/2" rectangles C-1 ; (1) 2-1/2" x WOF strip; subcut (4) 2-1/2" x 7-1/2" rectangles C-2
D	(1) 2-1/2" " x WOF strip; subcut (4) 2-1/2" squares D-1 and (4) 2" x 3-1/2" rectangles D-2
E	(1) 2-1/2" " x WOF strip; subcut (4) 2-1/2" squares E-1 and (4) 2" x 3-1/2" rectangles E-2
F	Set aside for backing
G	(4) 2-1/2" x WOF strips for binding.

PIECING INSTRUCTIONS

Sew a Fabric B rectangle **B-2** to a Fabric E square **E-1**. Press toward Fabric B rectangle Pieced unit to measure 2-1/2" x 9-1/2". Repeat to make 4 total units.



Make 4

Sew a Fabric C rectangle **C-2** to a Fabric D square **D-1**. Press toward Fabric B rectangle Pieced unit to measure 2-1/2" x 9-1/2". Repeat to make 4 total units.



Make 4

Sew a Fabric B rectangle **B-1** to a Fabric D rectangle **D-2**. Press toward Fabric D rectangle. Pieced unit to measure 2" x 14".



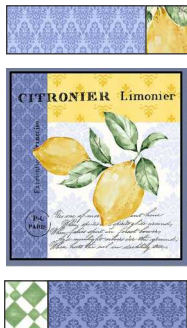
Make 4

Sew a Fabric C rectangle **C-1** to a Fabric E rectangle **E-2**. Press toward Fabric E rectangle. Pieced unit to measure 2" x 14".



Make 4

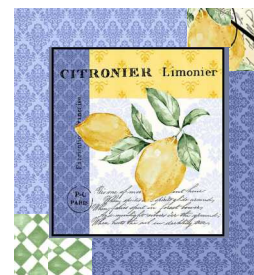
Make 4 blocks: Sew short sections to the top and the bottom of the panel rectangle. Add longer sections to left and right side. Press all seams toward panel.



Make 4

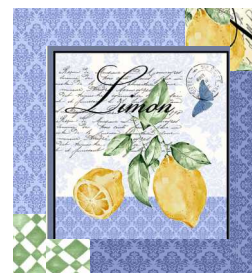
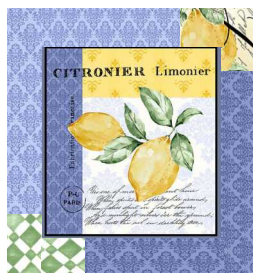


Make 4



Make 4

Stitch blocks together, rotating every other block in as shown below.



Stitch blocks together, rotating every other block in as shown below. Layer runner, batting and backing together to form quilt sandwich. Baste and quilt as desired. Join (4) 2-1/2" Fabric G strips, then bind.

