

Cozy Robe



Size Chart

Size	Chest	Fabric 58" - 60" wide
Toddlers T2 (Small)	21"	1 1/8 yards
Toddlers T4 (Medium)	23"	1 1/8 yards
Size 6 (Large)	25"	1 1/4 yards

Cut out pattern pieces and pocket sheet as directed.

Following pictures, sew together in the following order for both fabrics (no pocket for inside contrast).

Follow measurements below for belt and belt loops --

Belt - Cut (2) each of main fabric and contrast 2" x 24" for Small and Medium (Size 2 and Size 4). Cut (2) each of main fabric and contrast 2" x 26" for Large (Size 6)

Belt Loops - Cut one loop main fabric 1" x 7 1/4" (this will make 2 belt loops when cut apart) Diagram D
If you prefer, use double fold bias tape or cotton for less bulky belt lops.

-- Directions --

1. Sew hood pieces right sides together (seam #1) Diagram A
2. Turn in pocket edges as per pattern markings and sew at front placement lines.
3. Sew shoulder seams, right sides together (seam #2) Diagram A
4. Sew hood to necklines, right sides together (seam #3) Diagram A
5. Make belt loops, fold in half, right sides together, stitch lengthwise 1/8" and turn, or use premade double fold bias tape for less bulky loops. Place at side seams on right side as on pattern so loop will be on outside when turned.
6. Sew on sleeves (seam #4) Diagram A, matching small dots.
7. Sew side seams (seam #5) Diagram A, arms and sides.
8. Sew edges as per Diagram B with right sides together, both main fabric and contrast (seam #6) Diagram B leaving opening for turning as per picture.
9. Turn robe right sides out. Fold 1/4" in on sleeve bottoms.
10. Topstitch sleeve bottoms and all around robe, closing all openings.
11. Stitch belt back seams right sides together. Press seam open. Join with contrast right sides together, leaving opening for turning as per diagram C.
Turn, topstitch, and add to robe. Fold up cuff approximately 2"-4" for needed length.



Diagram A

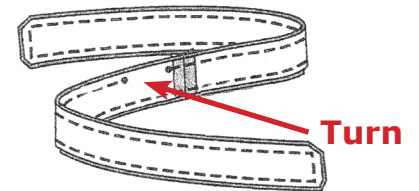
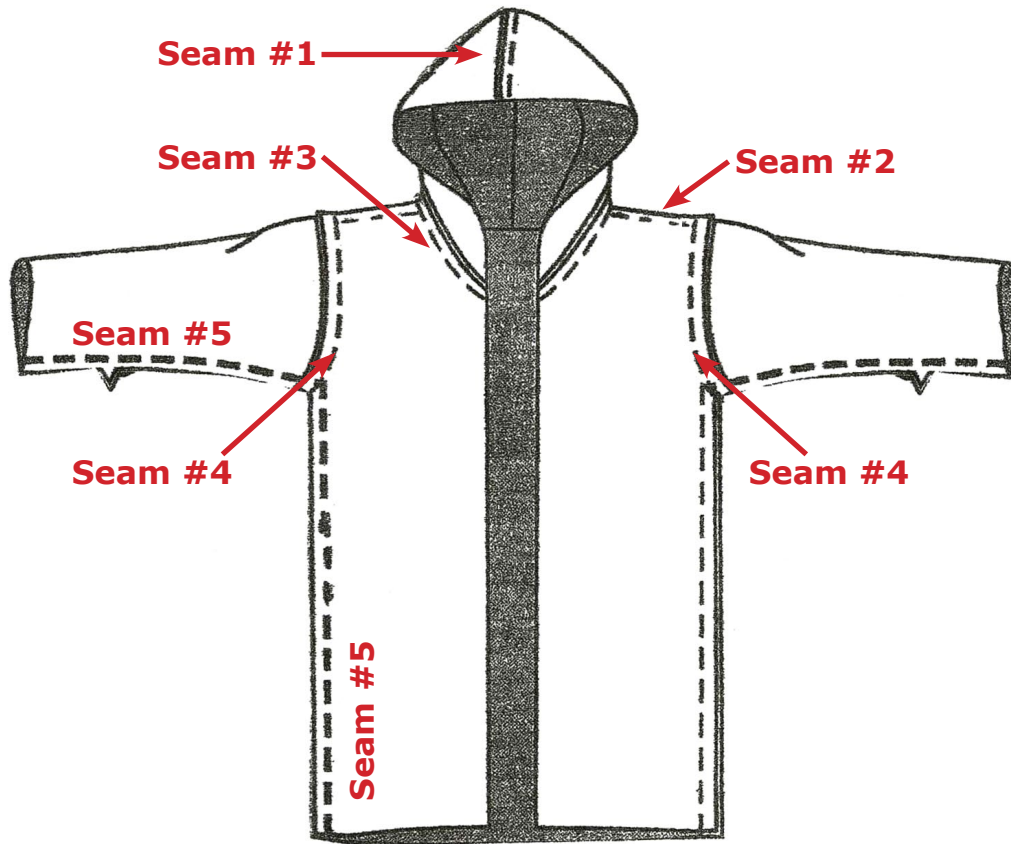


Diagram C

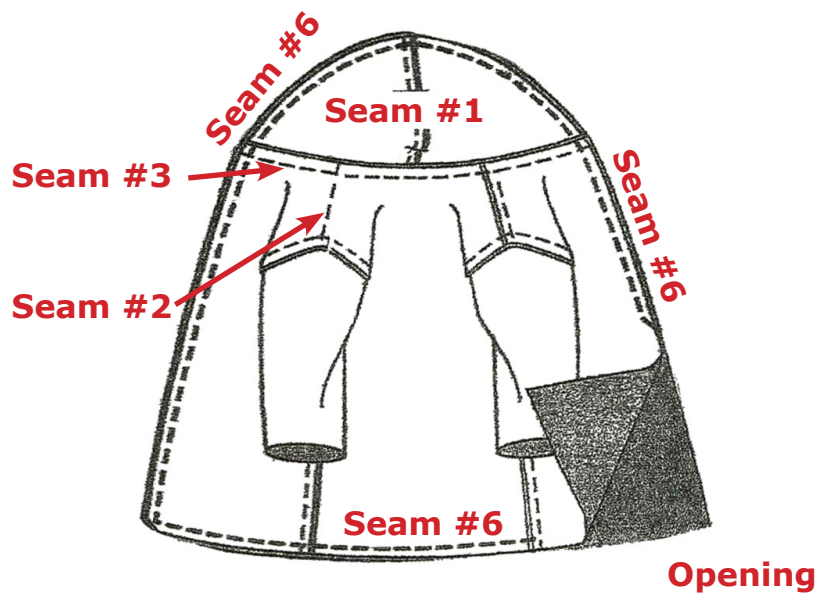


Diagram B

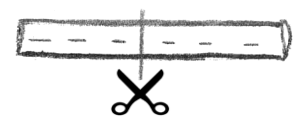
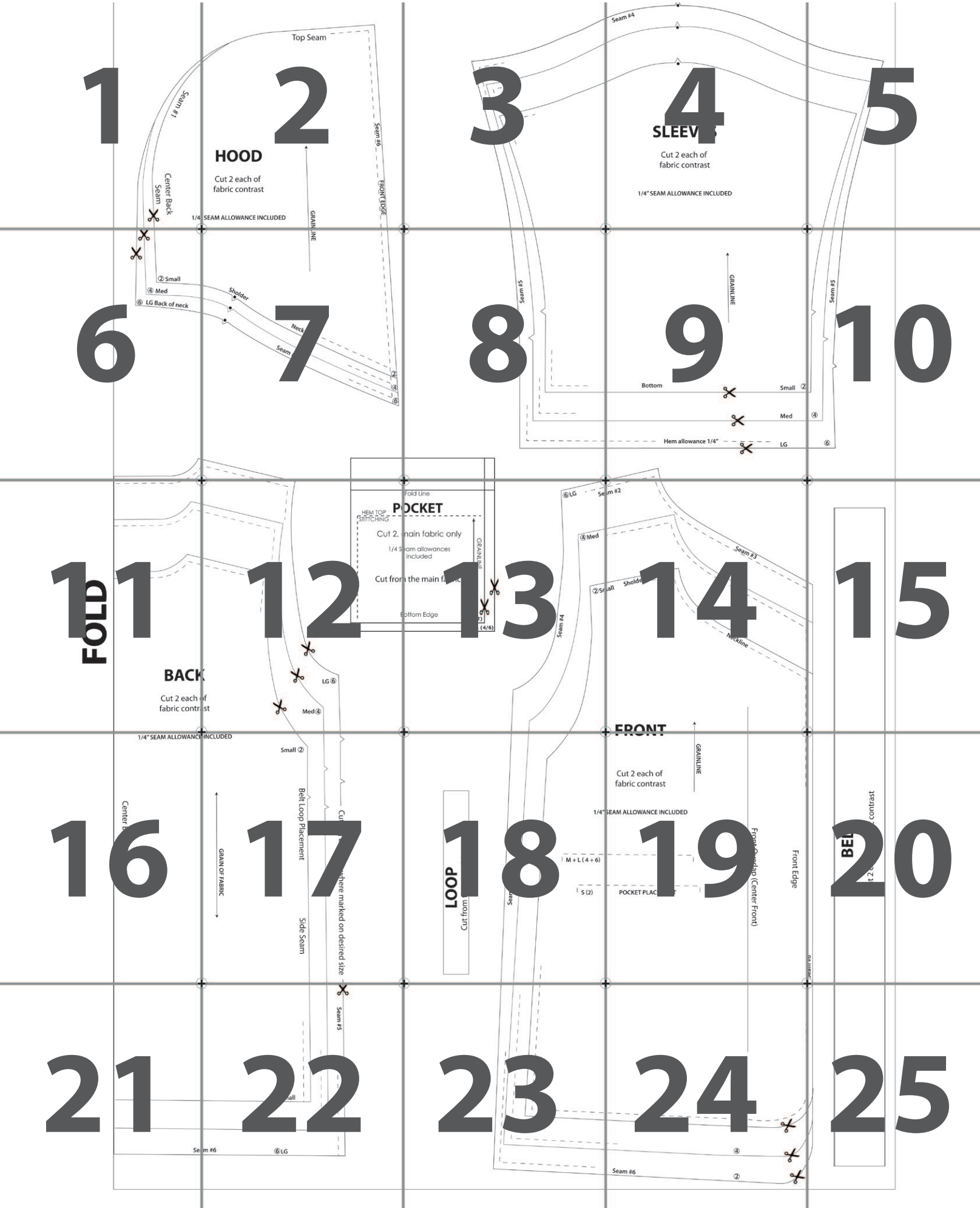
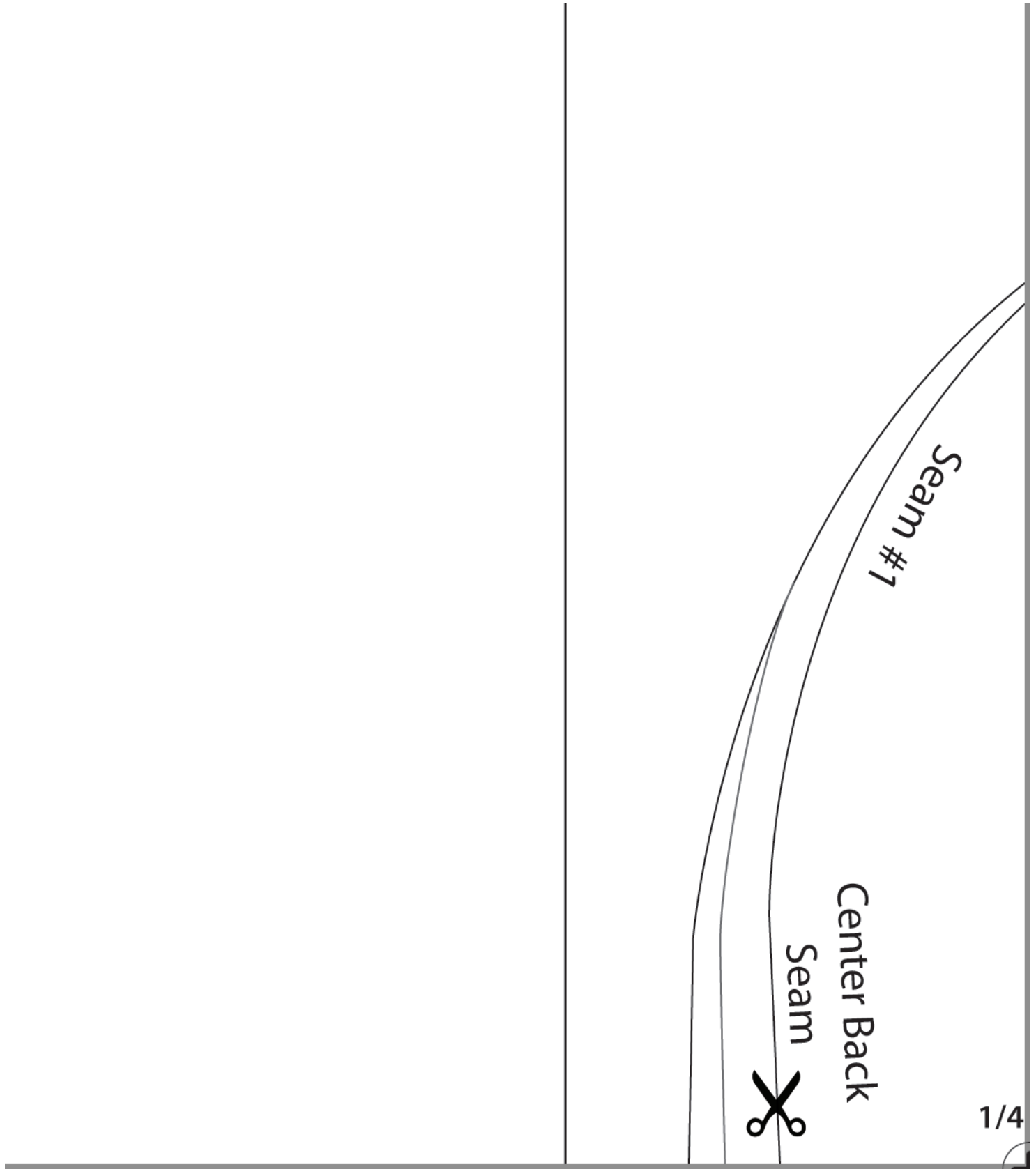
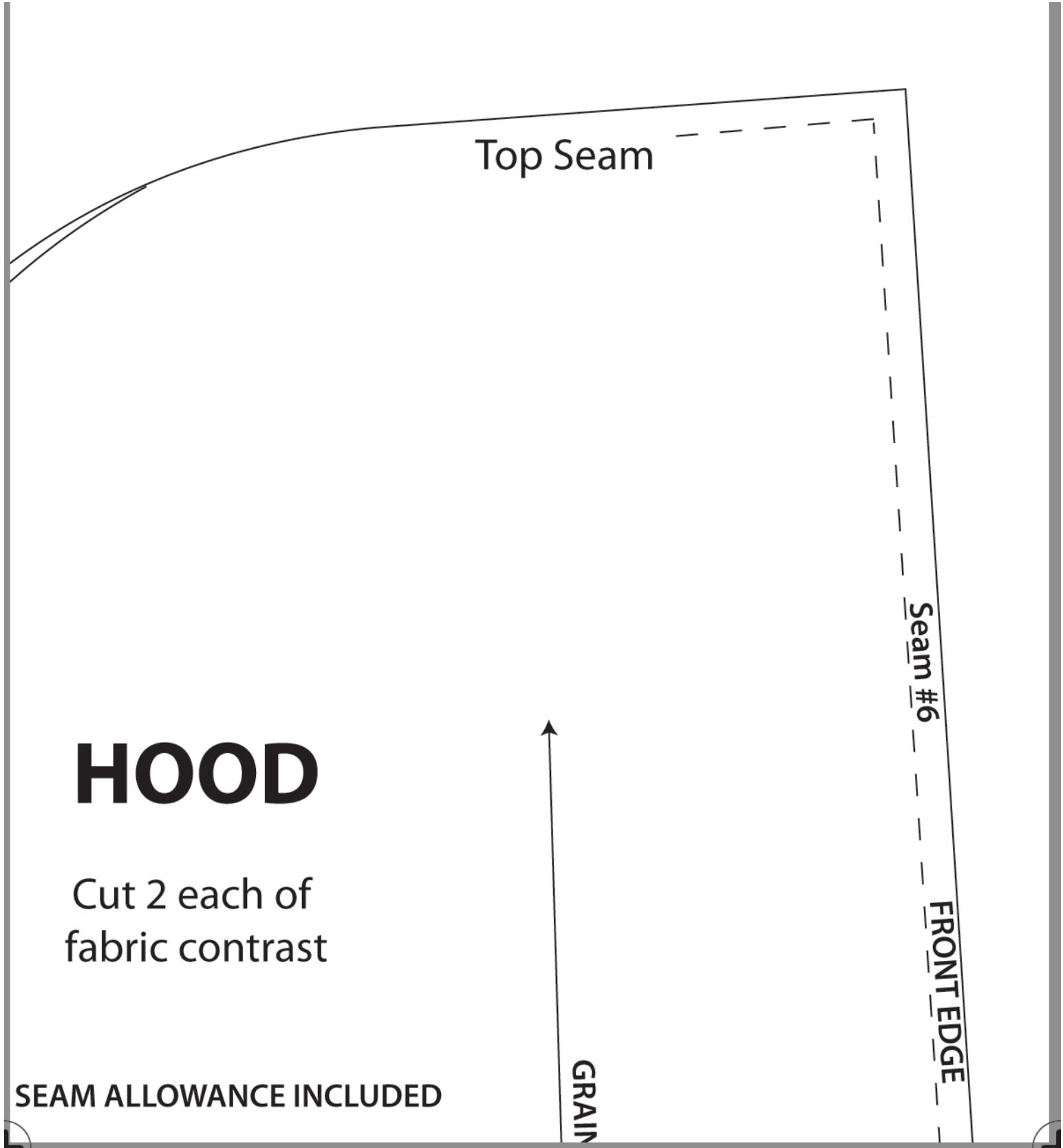


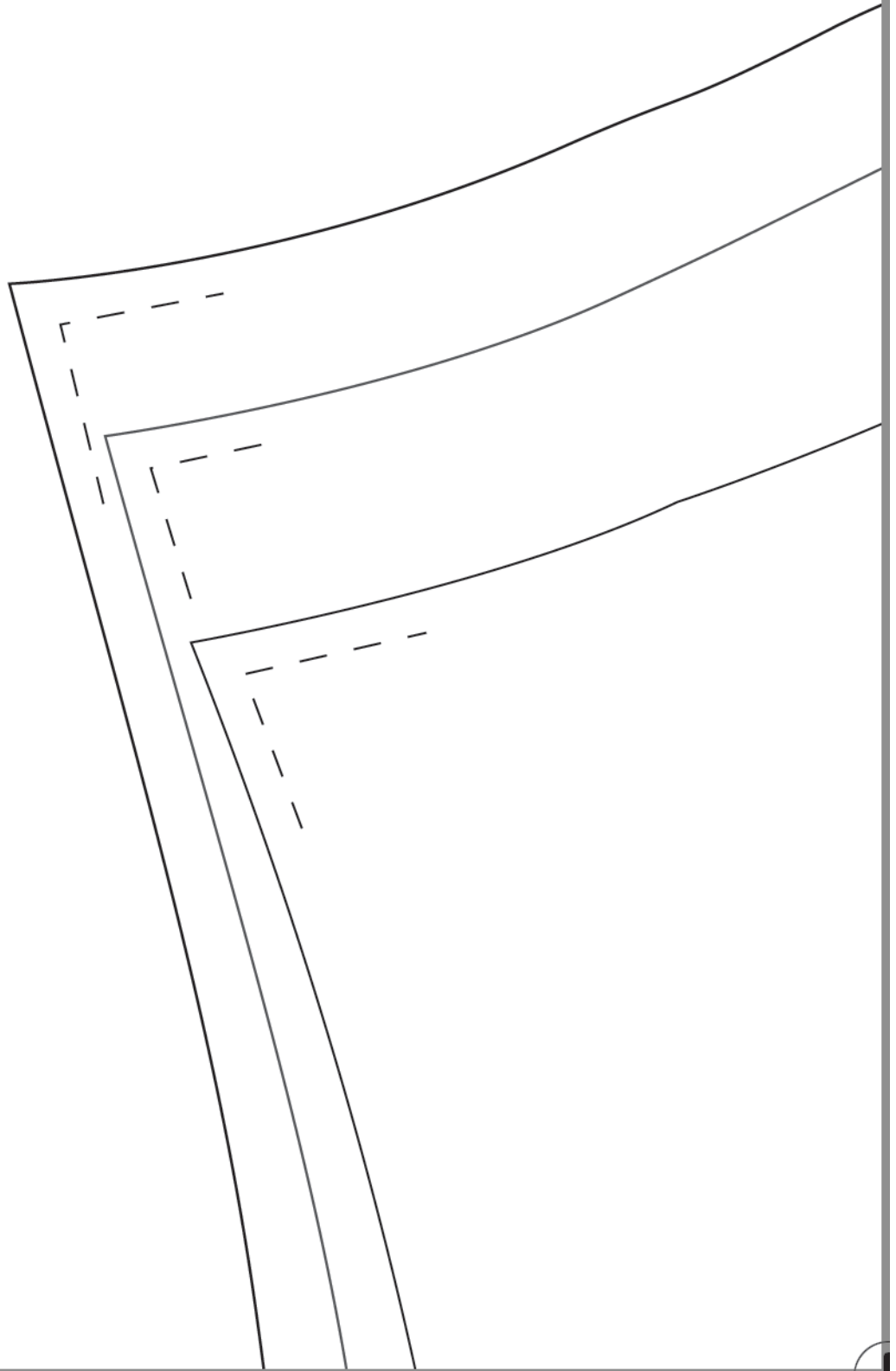
Diagram D

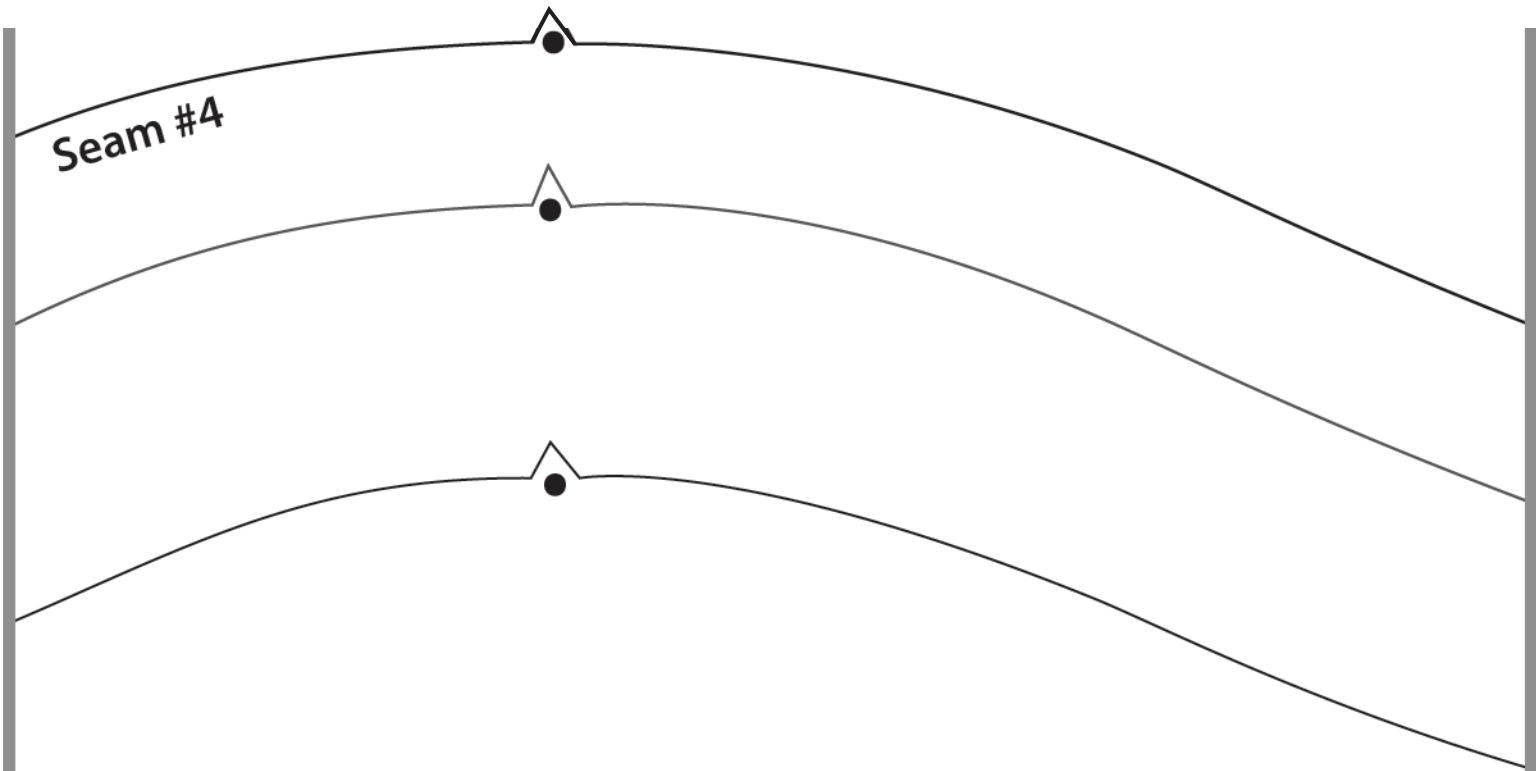
Cozy Robe Guide







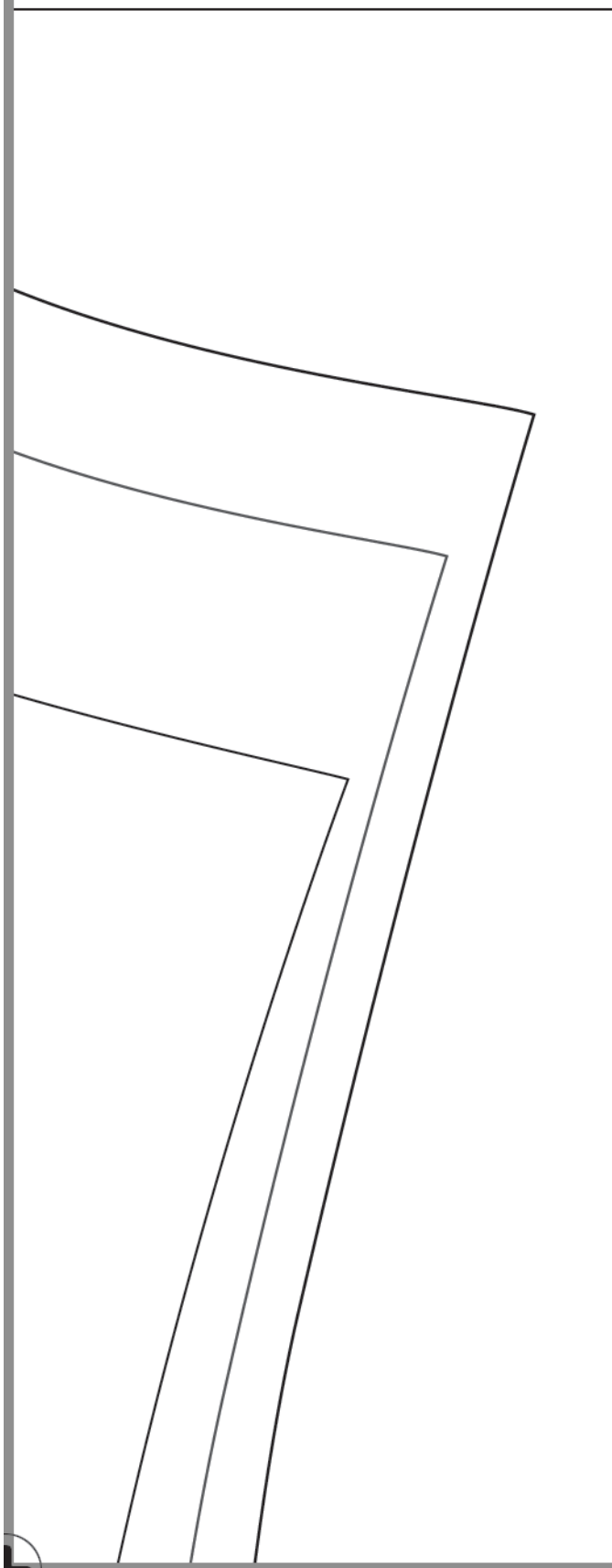


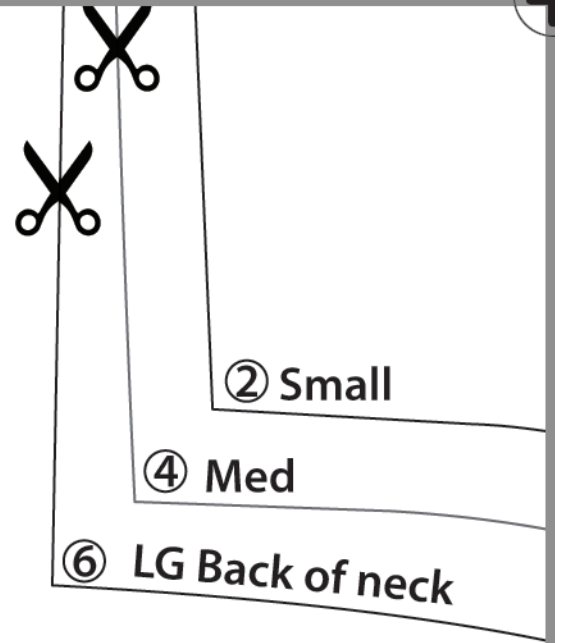


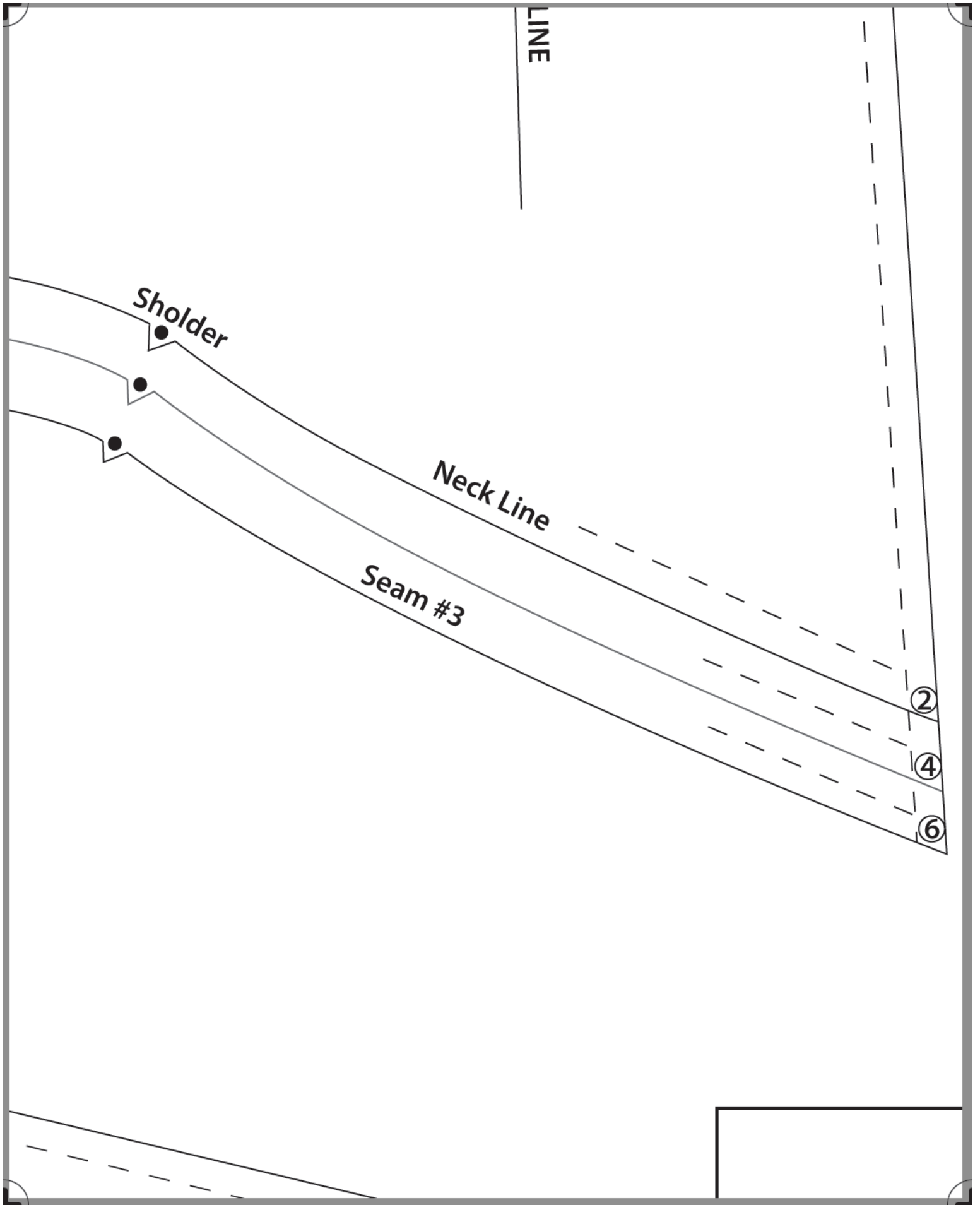
SLEEVES

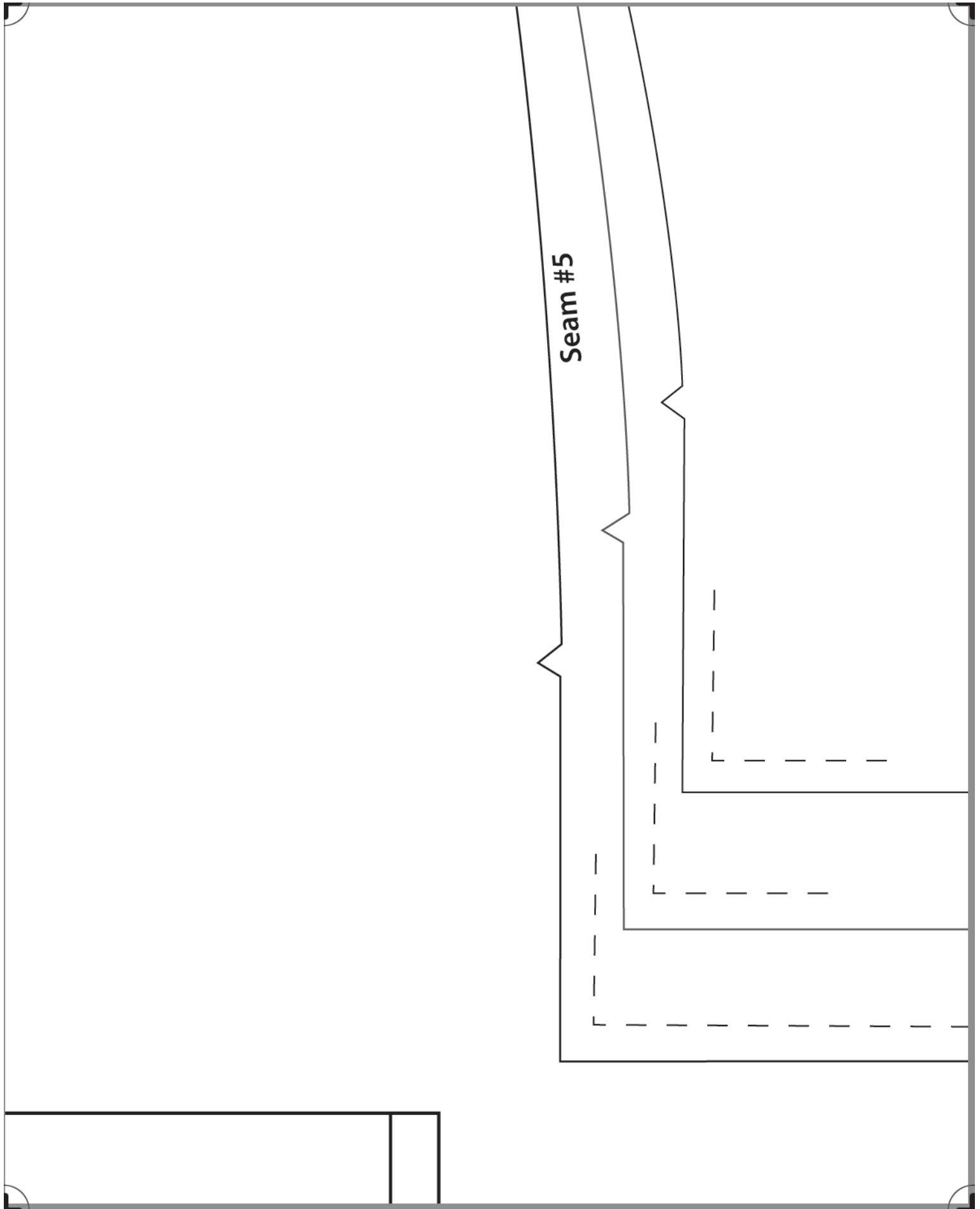
Cut 2 each of
fabric contrast

1/4" SEAM ALLOWANCE INCLUDED











Bottom

Small ②



Med



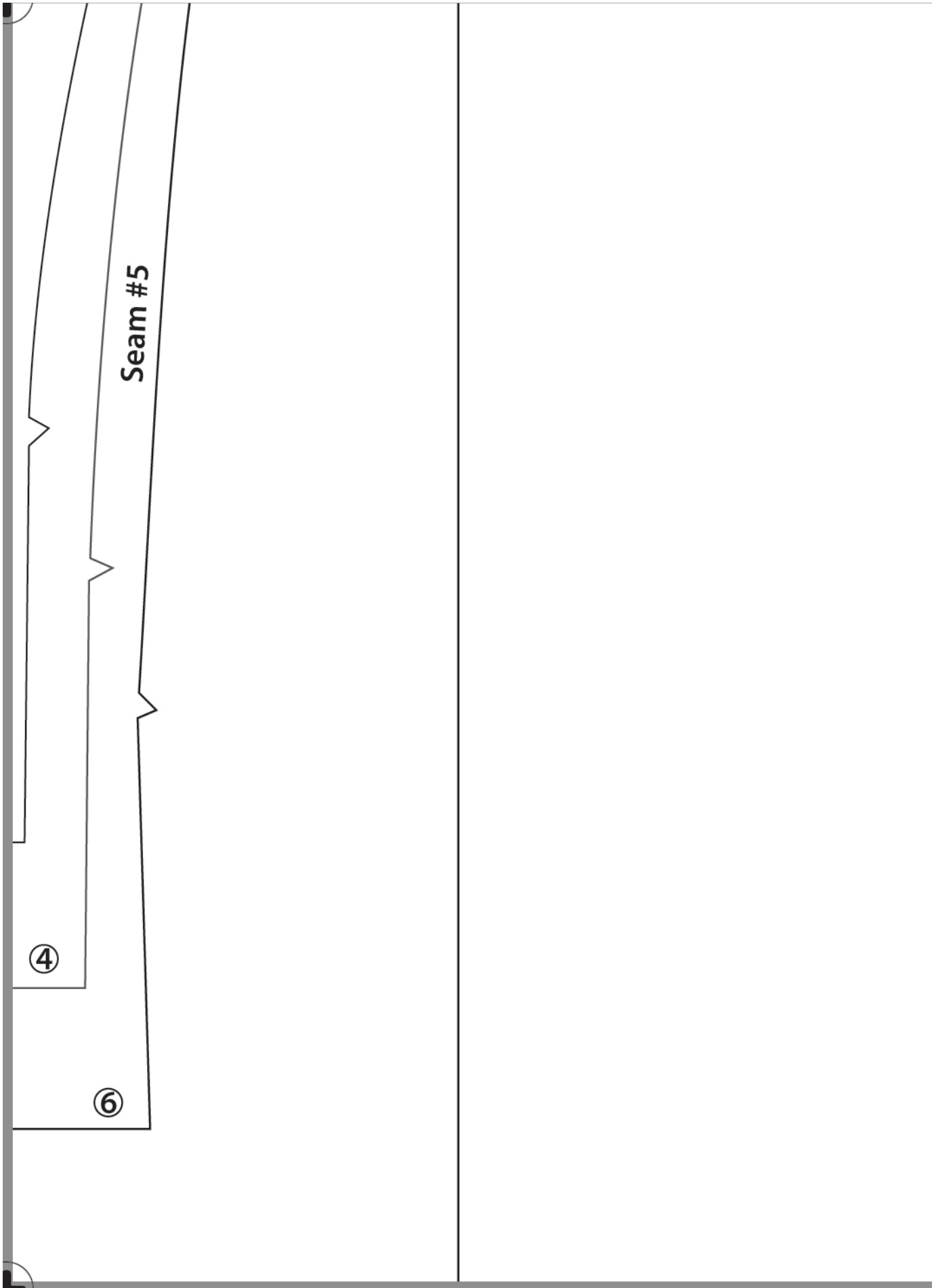
- - - - -

Hem allowance 1/4"

- - - - -

LG

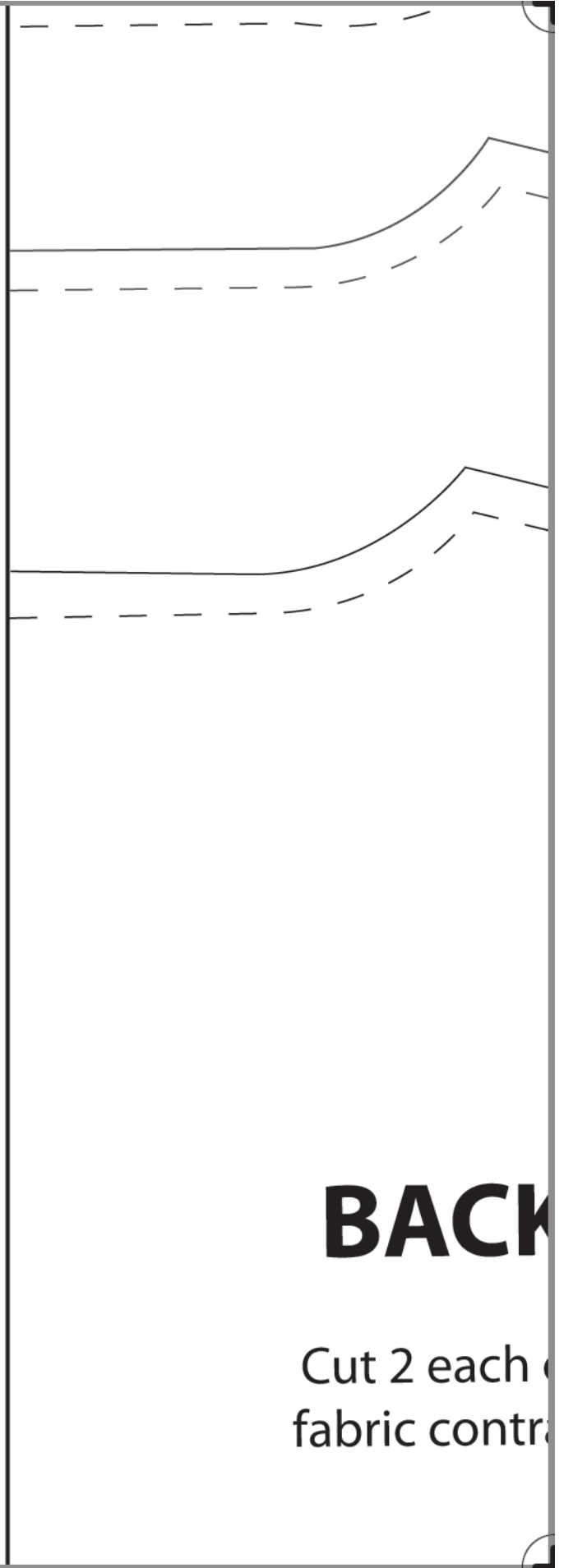


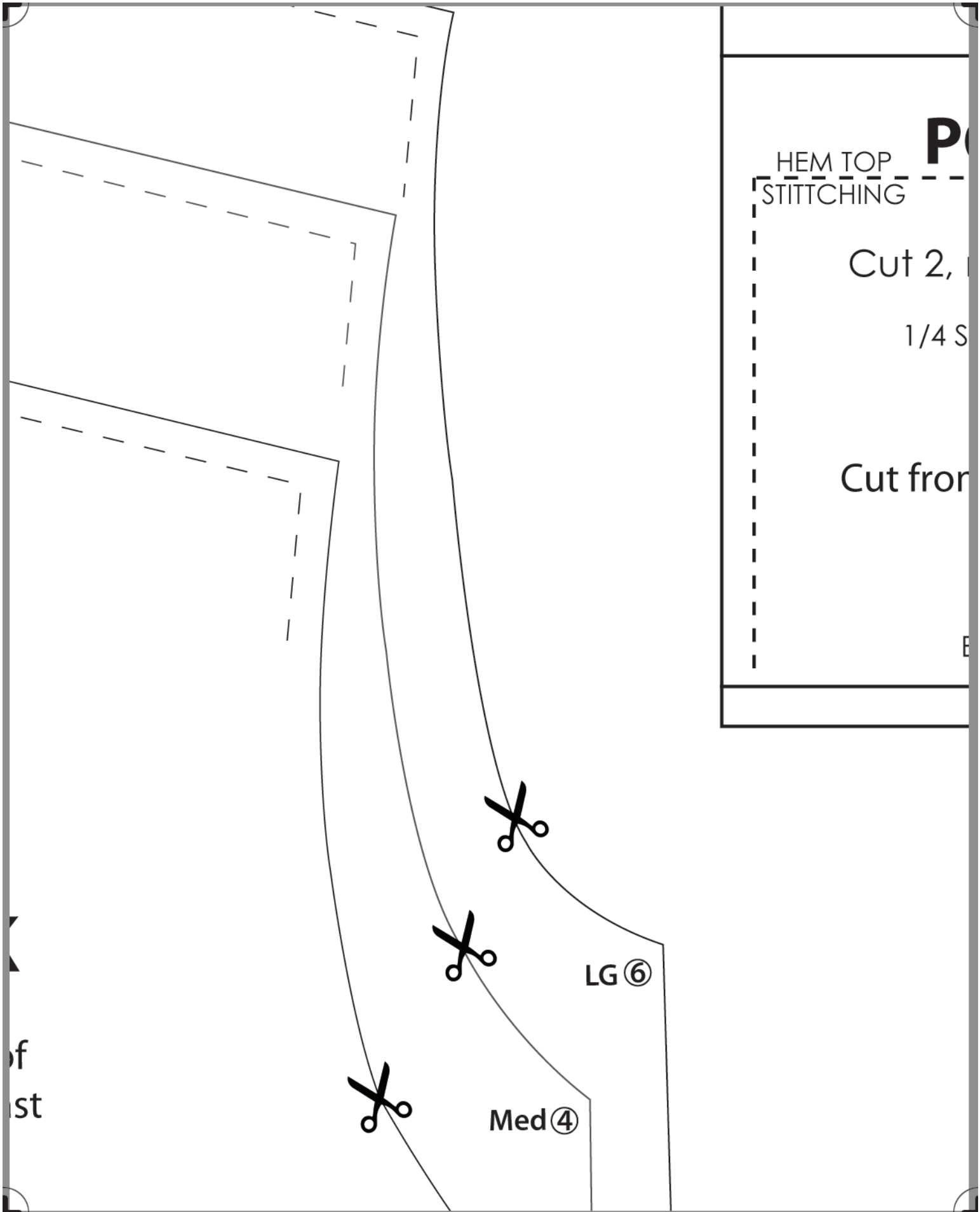


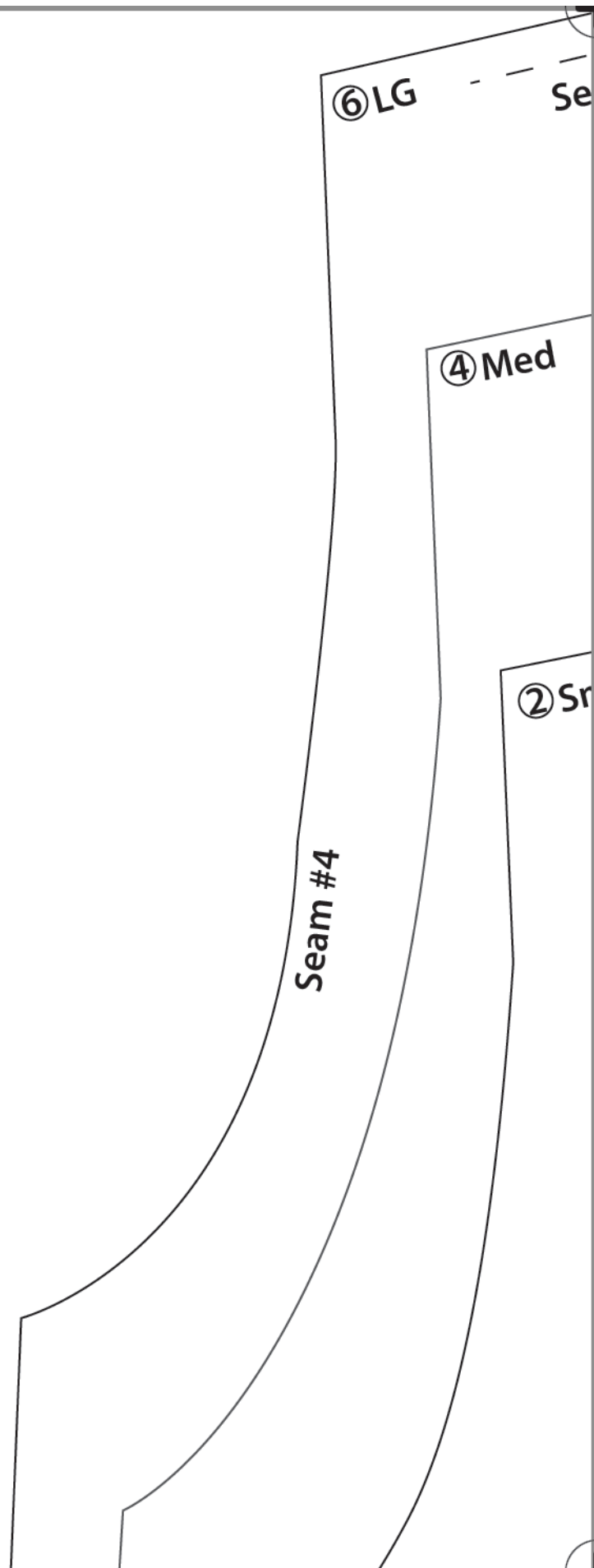
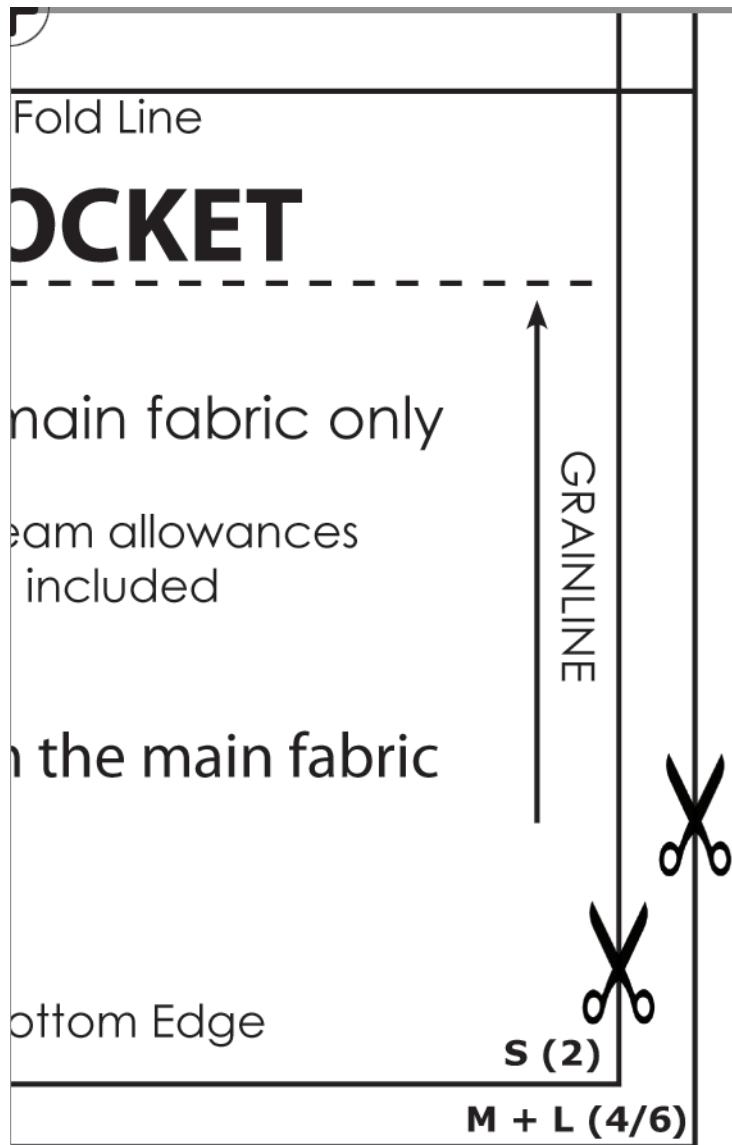
FOLD

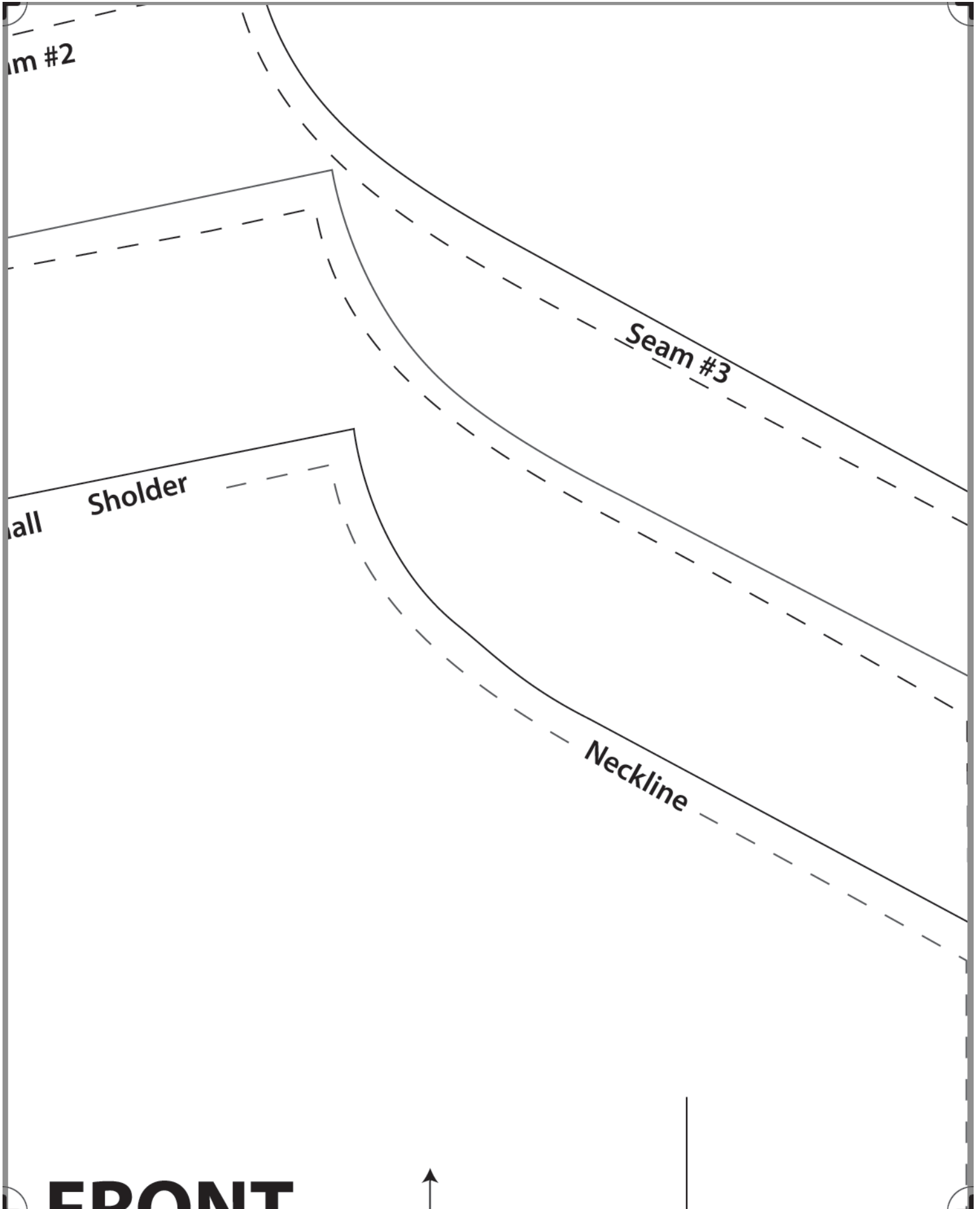
BACK

Cut 2 each of
fabric contr



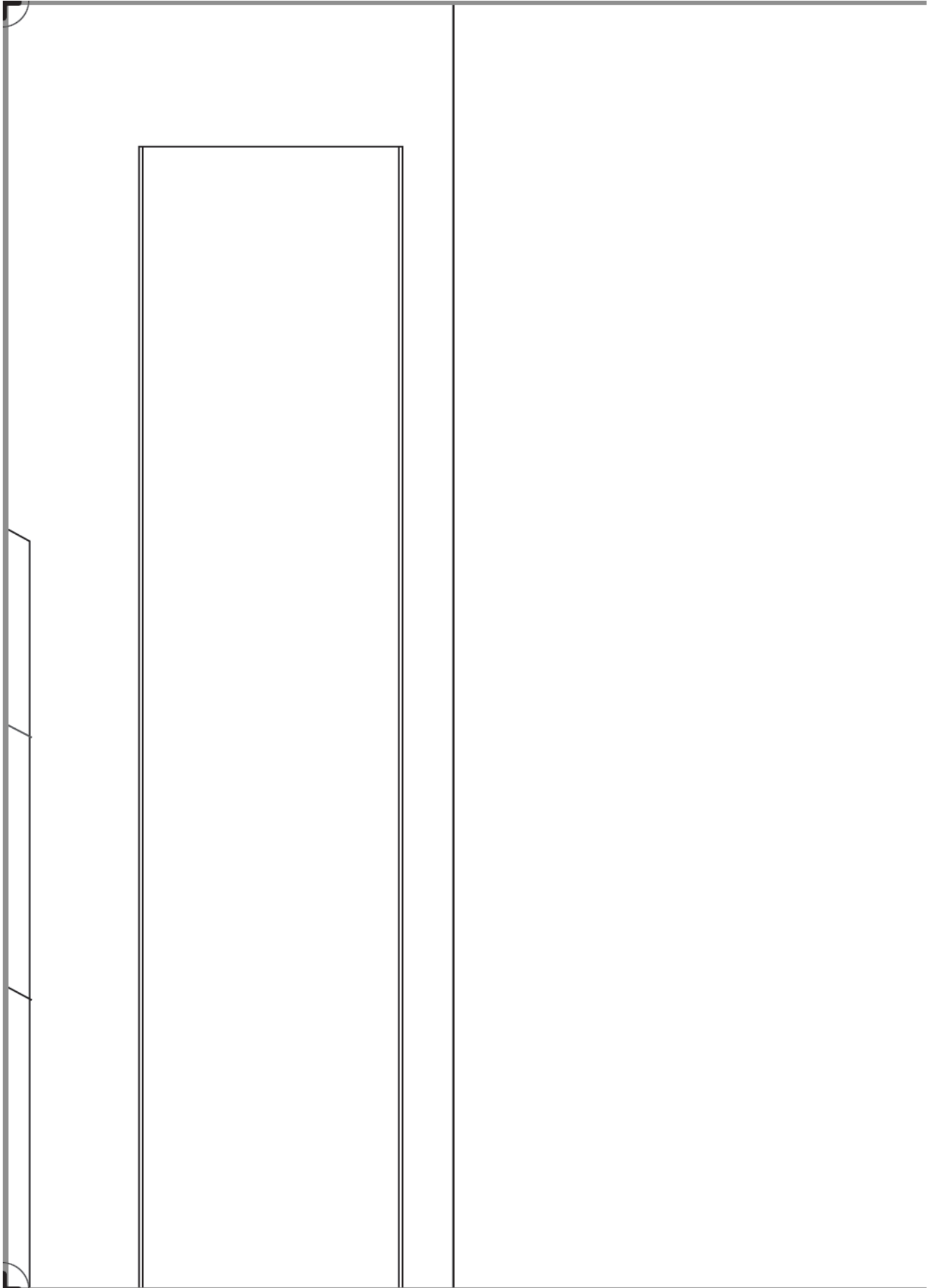






Cozy Robe

Pattern - 15



1/4" SEAM ALLOWANCE

Center Back - Place on fold

INCLUDED

Small ②

Belt Loop Placement

Side Seam

Cutting Line: Cut where marked on desired size

GRAIN OF FABRIC

LOOP

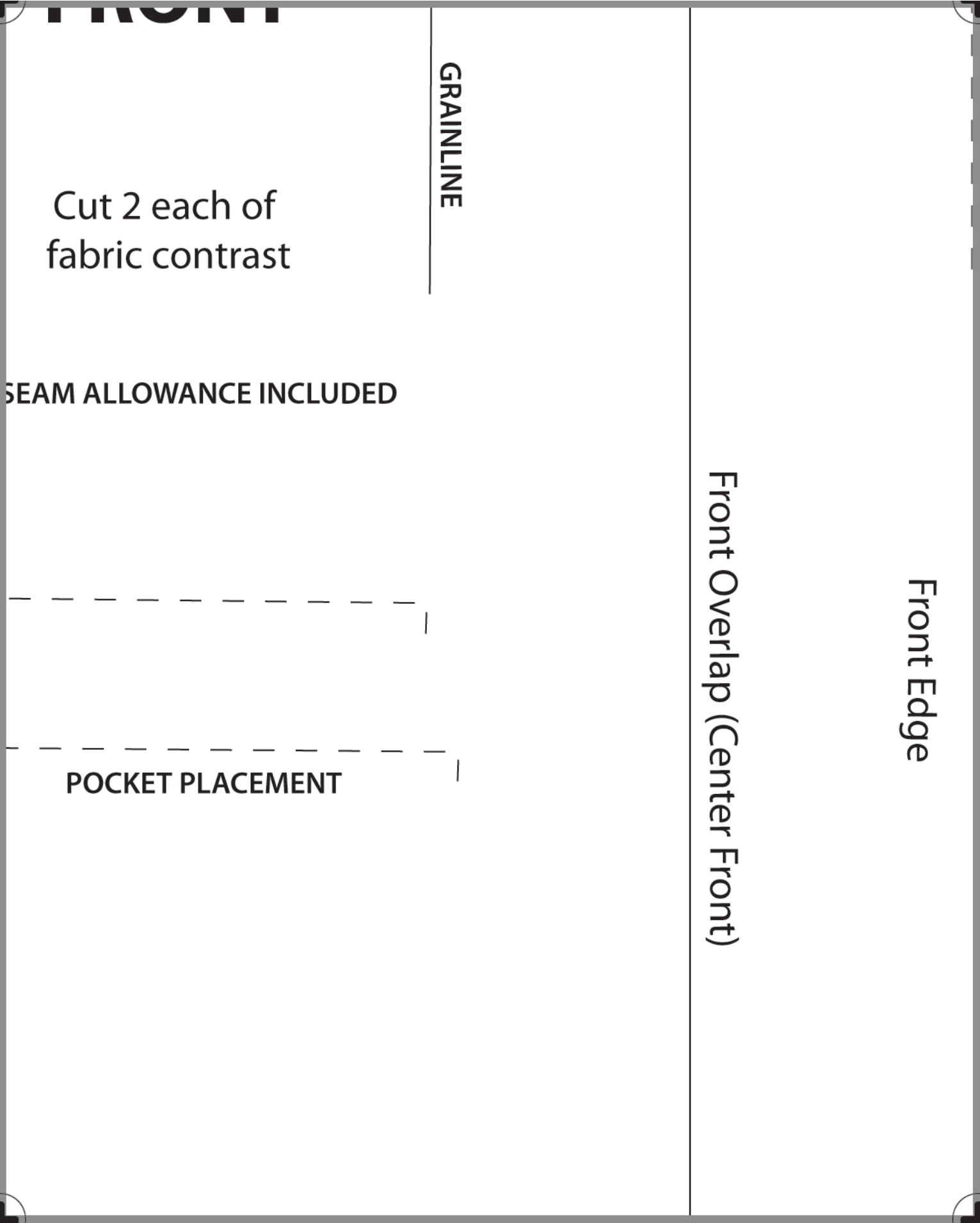
Cut from the main fabric

Seam #5

1/4"

— — — — —
| M + L (4 + 6)

— — —
| S (2)

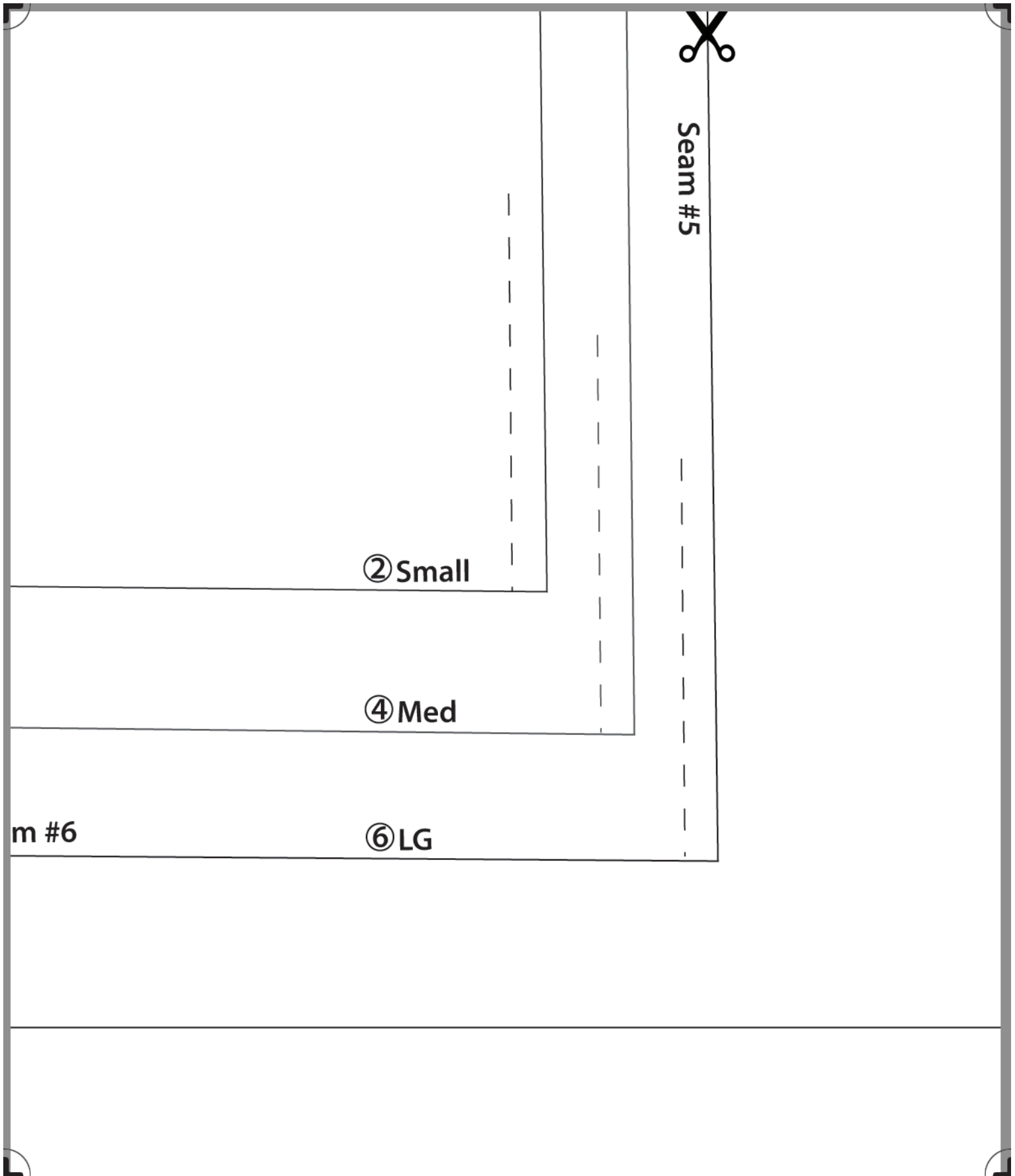


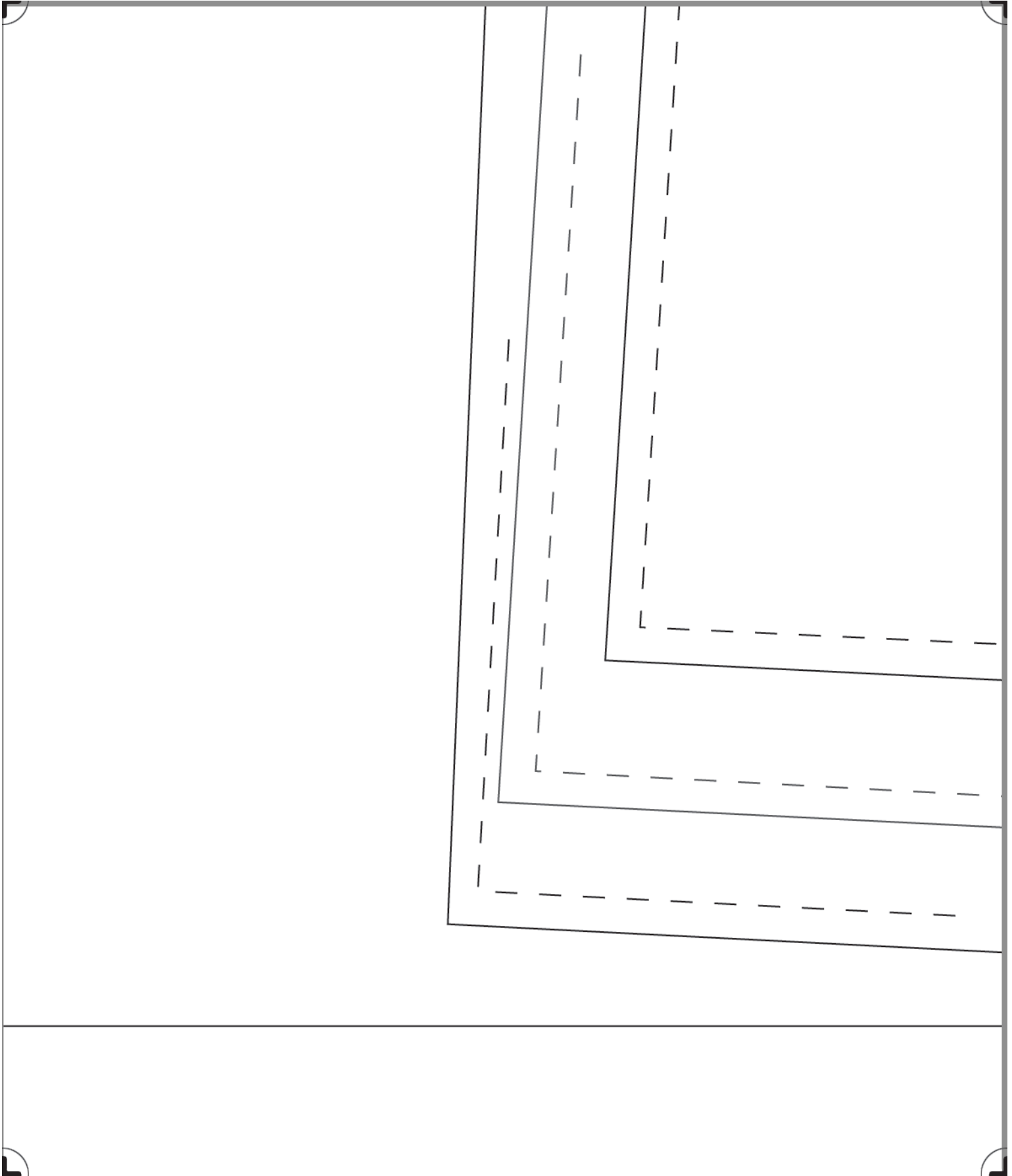
Pattern #0

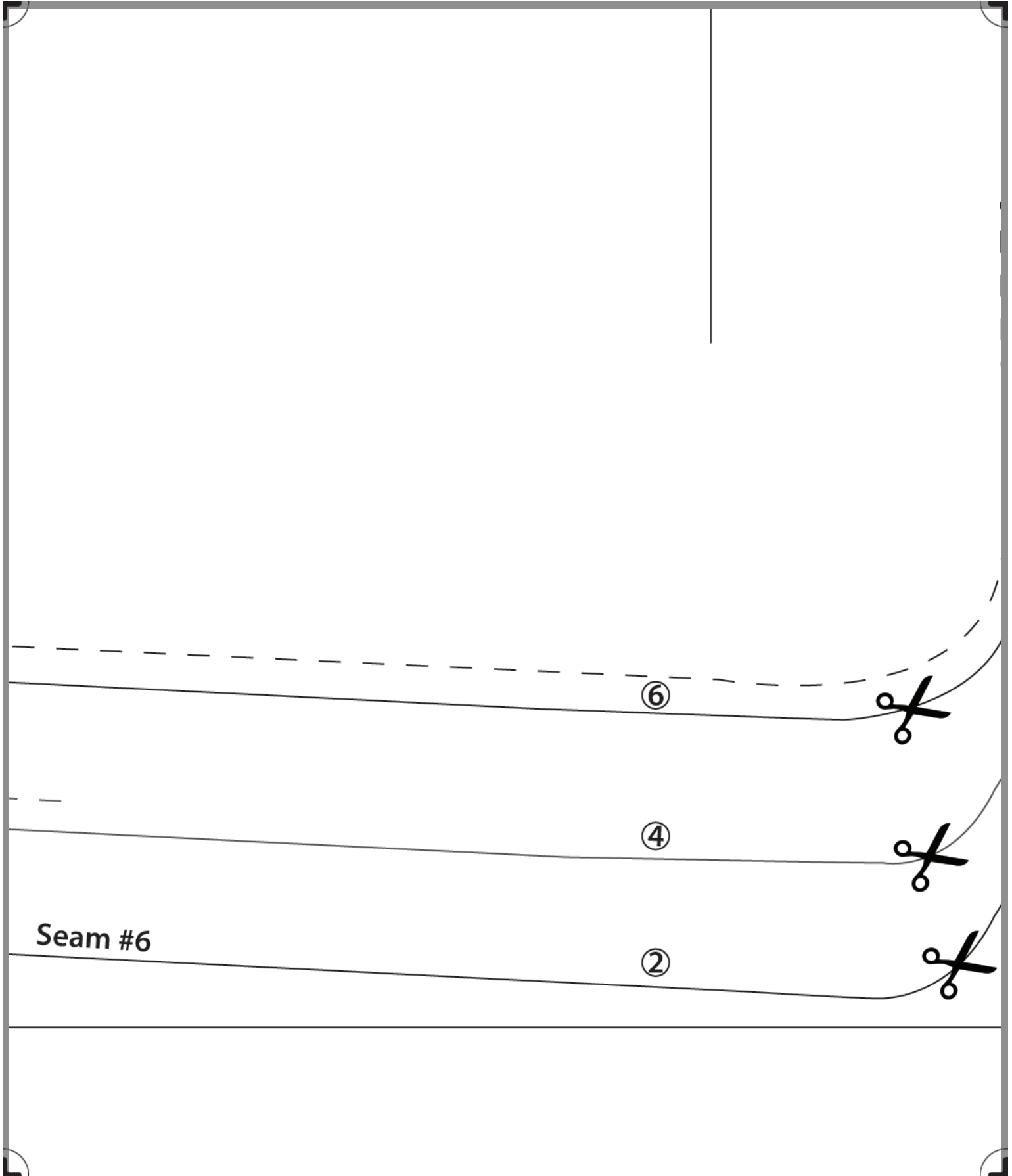
BELT

Cut 2 each of fabric contrast

Se







Cozy Robe

Pattern - 25

