

michael miller FABRICS

GARDEN VIEW QUILT

SIZE: 53"Wx 71"H • LEVEL: CONFIDENT BEGINNER • PATTERN BY: WENDY SHEPPARD

FABRIC COLLECTION: EAT, SLEEP, GARDEN • FREE PATTERN AVAILABLE ON: MICHAELMILLERFABRICS.COM



THIS IS A DIGITAL REPRESENTATION OF THE QUILT TOP, FABRIC MAY VARY.

PLEASE NOTE: BEFORE BEGINNING YOUR PROJECT, CHECK FOR ANY PATTERN UPDATES AT MICHAELMILLERFABRICS.COM'S FREE PROJECTS SECTION.

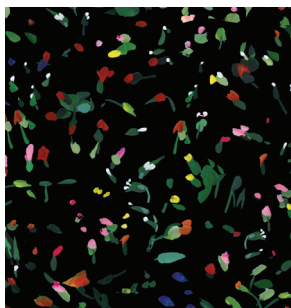
p.212.704.0774 | info@michaelmillerfabrics.com | www.michaelmillerfabrics.com



GARDEN VIEW QUILT



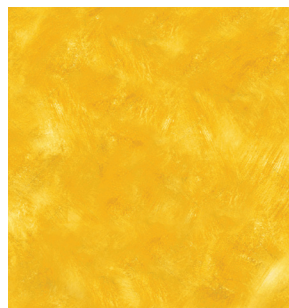
FABRIC A
CM0376-GLIMMER
FAIRY FROST
2-3/8 YARDS



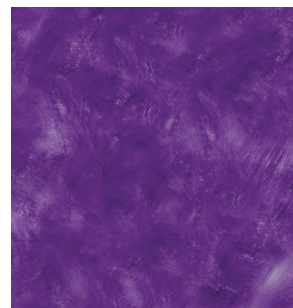
FABRIC B
CX9061-BLACK
ROSE BUDS
5/8 YARD



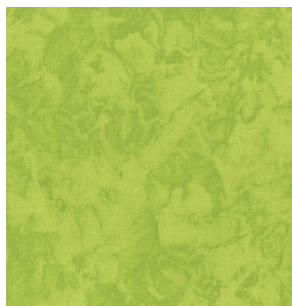
FABRIC C
CX9061-TEAL
ROSE BUDS
1/4 YARD



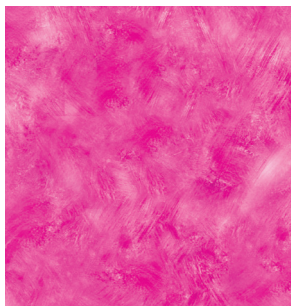
FABRIC D
CX9062-YELLOW
HAND SPRAYED
1/4 YARD



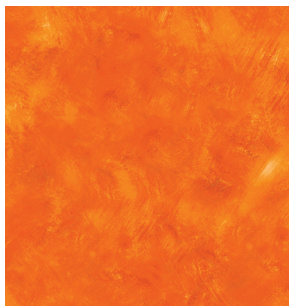
FABRIC E
CX9062-PLUM
HAND SPRAYED
1/4 YARD



FABRIC F
K4058-LIME
KRYSTAL
1/2 YARD



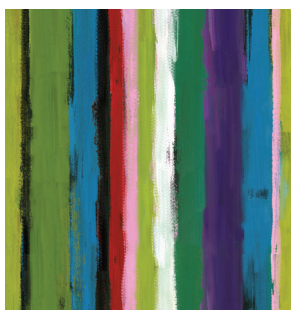
FABRIC G
CX9062-MAGENTA
HAND SPRAYED
7/8 YARD*
(INCLUDES BINDING)



FABRIC H
CX9062-ORANGE
HAND SPRAYED
3/8 YARD



FABRIC J
DCX9063-BLACK
FRESH CUT
1 YARD



FABRIC K
DCX9065-TEAL
PAINTER'S STRIPE
3/8 YARD



FABRIC I
DCX9059-TEAL
BOWERS OF FLOWERS
1 REPEAT OR 2/3 YARD

(BACKING)
YOUR CHOICE
4-1/2 YARDS



GARDEN VIEW QUILT

KEY	CUTTING INSTRUCTIONS
A	<p>a. quilt center sashing strips (2) 1 1/2" x wof. Subcut (2) 1 1/2" x 20" and (1) 1 1/2" x 22 1/2" strips.</p> <p>b. inner border #1 (4) 1 1/2" x wof. Subcut (2) 1 1/2" x 24 1/2" and (2) 1 1/2" x 40 1/2" strips.</p> <p>c. inner border #2 blocks (26) 3 1/2" x 5" rectangles (Paper Piecing Template A1) (104) 2 1/2" squares (52 A4 and 52 A5 Paper Piecing Templates)</p> <p>d. inner border #3 (5) 2 1/2" x wof. Subcut (2) 2 1/2" x 40 1/2" strips from (2) strips. Piece remaining (3) strips and subcut (2) 2 1/2" x 54 1/2" strips.</p> <p>e. inner border #5 (6) 2" x wof. Piece strips and subcut (2) 2" x 45 1/2" and (2) 2" x 60 1/2" strips.</p>
B	<p>a. inner border #2 blocks (26) 3 1/2" x 5" rectangles (Paper Piecing Template A1)</p>
C	<p>a. inner border #2 blocks (16) 2 1/2" x 5" rectangles (8 A2 and 8 A3 Paper Piecing Templates)</p>
D	<p>a. inner border #2 blocks (16) 2 1/2" x 5" rectangles (8 A2 and 8 A3 Paper Piecing Templates)</p>
E	<p>a. inner border #2 blocks (16) 2 1/2" x 5" rectangles (8 A2 and 8 A3 Paper Piecing Templates)</p>
F	<p>a. inner border #2 blocks (16) 2 1/2" x 5" rectangles (8 A2 and 8 A3 Paper Piecing Templates)</p> <p>b. inner border #6 (6) 1" x wof. Piece strips and subcut (2) 1" x 46 1/2" and (2) 1" x 63 1/2" strips.</p>
G	<p>a. inner border #2 blocks (16) 2 1/2" x 5" rectangles (8 A2 and 8 A3 Paper Piecing Templates)</p> <p>b. binding (8) 2 1/4" x wof. Piece strips to make a continuous binding strip.</p>
H	<p>a. inner border #2 blocks (24) 2 1/2" x 5" rectangles (12 A2 and 12 A3 Paper Piecing Templates)</p>
I	<p>a. quilt center (4) 11" x 20" rectangles from panel print</p>



GARDEN VIEW QUILT

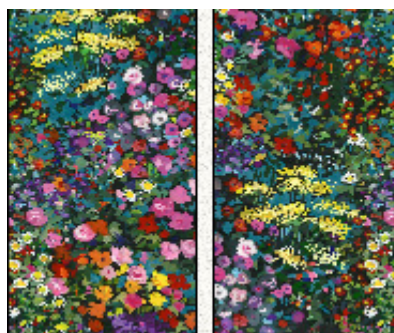
J	a. outer border (6) 4" x wof. Piece strips and subcut (2) 4" x 53 1/2" and (2) 4" x 64 1/2" strips.
K	a. inner border #4 (5) 1 1/2" x wof. Piece strips and subcut (2) 1 1/2" x 42 1/2" and (2) 1 1/2" x 58 1/2" strips.

Paper-piecing instructions

- Print paper piecing template onto foundation paper. The numbers on the pattern should be visible on both sides of the paper.
Note: Make sure the pattern prints at 100 percent.
- Trim the printed pattern to size. The 1/4" seam allowance has been added.
- Fabrics will be sewn to the foundation in numerical order. Using a dab of water soluble glue, place a (color)(shape) right side up on the wrong side of the foundation covering all of section one.
- Turn the foundation to the right side. Place the straight edge of an index card (or a piece of cardstock) on the line between sections one and two. Fold the foundation back over the straight edge of the card and trim the section one fabric 1/4" away from the fold.
- Turn the foundation to the wrong side and place a (color)(shape) on section A1 fabric, right sides together.
- Turn the foundation to the right side and sew on the line between sections one and two to join the two fabric pieces. Use a shorter stitch length to help perforate the paper for easy removal.
- Note: Sew directly on the printed line; do not sew beyond it.
- Turn the foundation to the right side and place the edge of the index card on the sewn line. Fold the foundation back over the card and trim the fabric 1/4" away from the fold.
- Turn the foundation to the wrong side and press A2 fabric open.
- Continue in the same manner and in numerical order until all sections are covered with fabric.

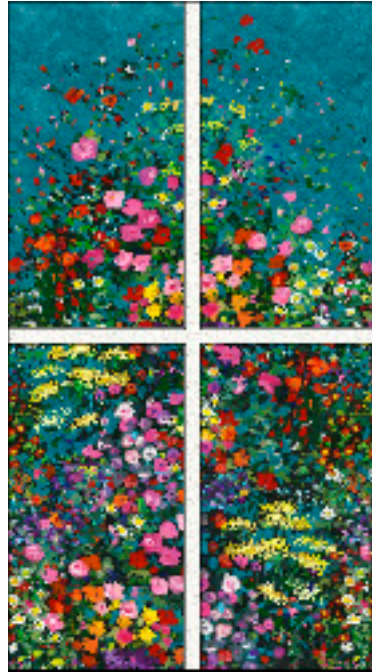
Quilt Center Assembly

1. Sew (2) 11" x 20" **Fabric I** panel rectangles to the opposite long sides of (1) 1 1/2" x 20" **Fabric A** sashing rectangle to make (1) row. Make a total number of two rows.



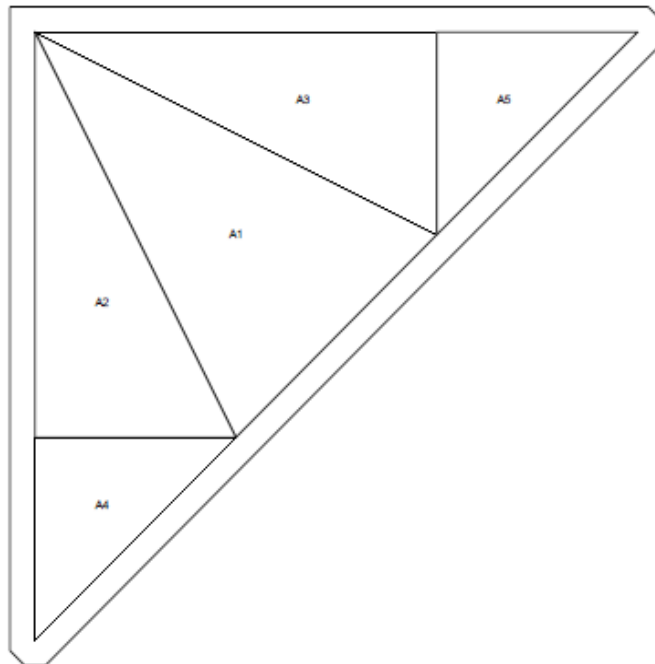
GARDEN VIEW QUILT

2. Sew rows to the opposite long sides of (1) $1\frac{1}{2}'' \times 22\frac{1}{2}''$ **Fabric A** sashing rectangle to complete quilt center. Quilt Center should measure $22\frac{1}{2}'' \times 40\frac{1}{2}''$.

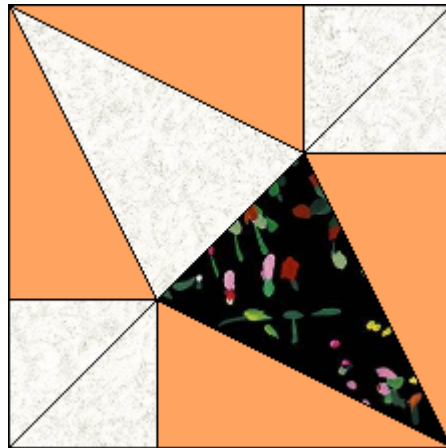


Quilt Top Assembly

1. Inner border #1. Sew (2) $1\frac{1}{2}'' \times 40\frac{1}{2}''$ **Fabric A** strips to the opposite long sides of quilt center, followed by (2) $1\frac{1}{2}'' \times 24\frac{1}{2}''$ **Fabric A** strips to the remaining opposite short sides of quilt center.
2. Inner border #2.
 - a. Use paper-piecing method to sew together **Fabric A** A1, A4, A5 and **Print** A2, A3 to complete one diagonal half of block. Repeat to sew together **Fabric B** A1, **Print** A2, A3, and **Fabric A** A4, A5 to complete another diagonal half of block.



GARDEN VIEW QUILT



b. Sew halves together to complete (1) block, measuring 6 1/2" x 6 1/2" raw edge to raw edge.

c. Make a total number of blocks for the following **prints**:

4 blocks: **C, D, E, F, G**

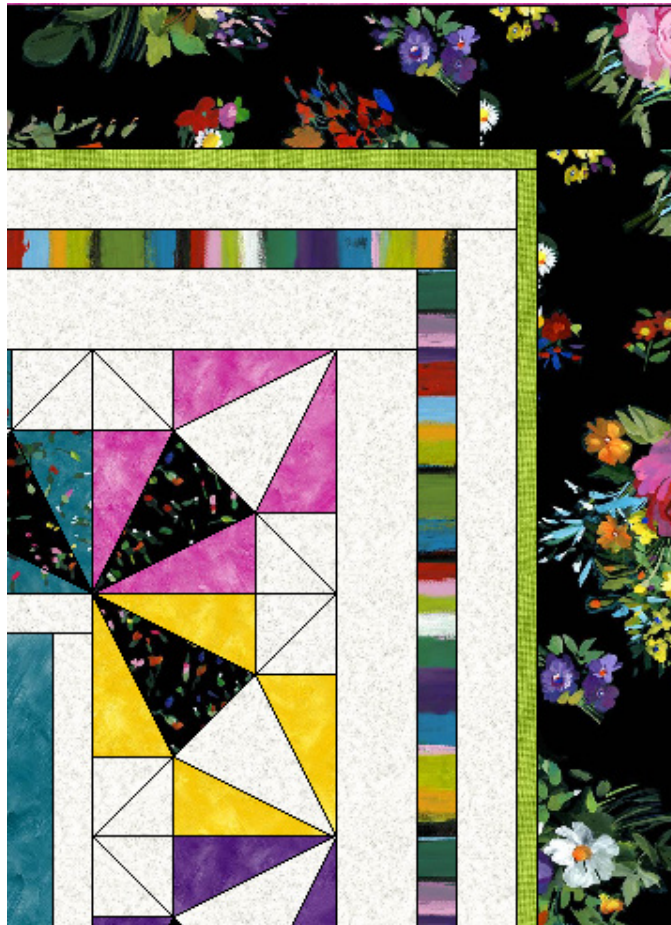
6 blocks: **H**

d. Arrange and sew (7) blocks to make a column. Make (2) columns and sew one column to each long side of quilt center. Arrange and sew (6) blocks to make a row. Make (2) rows and sew one row to the top and the bottom of quilt center.



GARDEN VIEW QUILT

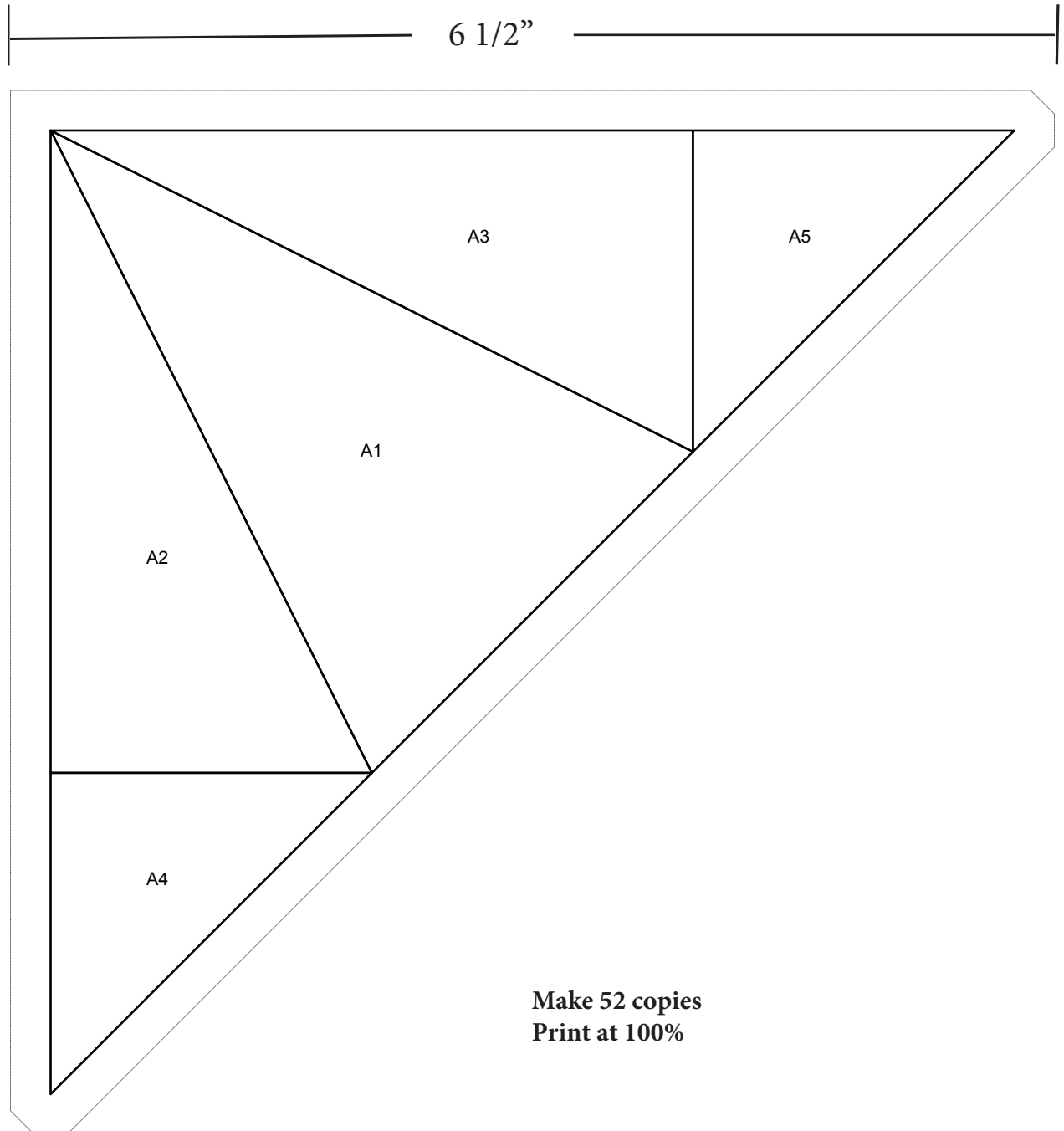
3. Inner border #3. Sew (1) 2 1/2" x 54 1/2" **Fabric A** strip to each side of quilt center, followed by (1) 2 1/2" x 40 1/2" **Fabric A** strip to the top and bottom of quilt center.
4. Inner border #4. Sew (1) 1 1/2" x 58 1/2" **Fabric K** strip to each side of quilt center, followed by (1) 1 1/2" x 42 1/2" **Fabric K** strip to the top and bottom of quilt center.
5. Inner border #5. Sew (1) 2" x 60 1/2" **Fabric A** strip to each side of quilt center, followed by (1) 2" x 45 1/2" **Fabric A** strip to the top and bottom of quilt center.
6. Inner border #6. Sew (1) 1" x 63 1/2" **Fabric F** strip to each side of quilt center, followed by (1) 1" x 46 1/2" **Fabric F** strip to the top and bottom of quilt center.
7. Outer border. Sew (1) 4" x 64 1/2" **Fabric J** strip to each side of quilt center, followed by (1) 4" x 53 1/2" **Fabric J** strip to the top and bottom of quilt center to complete quilt top.



FINISHING:

1. With the backing fabric laying taut, place batting and then quilt top to form quilt sandwich. Baste sandwich.
2. Quilt as desired.
3. Bind with Fabric G to finish quilt.

Template



Make 52 copies
Print at 100%