

michaelmiller FABRICS

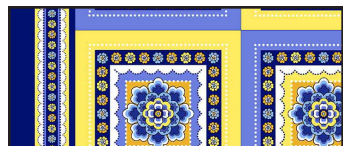
LA FLEUR TILES FUSSY CUT BORDER IN BLUE/TAUPE

SIZE: 48" W x 48" H • LEVEL: CONFIDENT BEGINNER • PATTERN BY: DIANE NAGEL • PROVENCIAL FABRIC COLLECTION
PATTERN AVAILABLE ON: MICHAELMILLERFABRICS.COM



LA FLEUR TILES FUSSY CUT BORDER QUILT

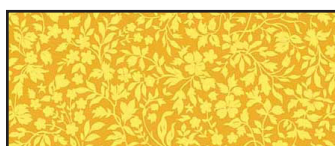
BLUE COLORWAY



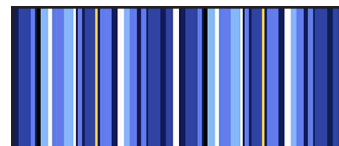
FABRIC A
CX8604 BLUE
PROVENCAL PATCH
1 YARD



FABRIC B
CX8601 POWDER BLUE
PROVENCAL VINE
1/2 YARD



FABRIC C
CX8601 YELLOW
PROVENCAL VINE
1/8 YARD



FABRIC D
CX8605 BLUE
PROVENCAL PLAIN STRIPE
1/2 YARD



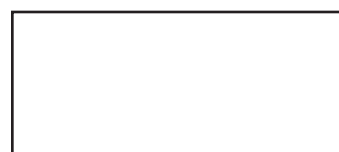
FABRIC E
CX8598 YELLOW
PROVENCAL GARDEN
1/2 YARD



FABRIC F
CX8600 BLUE
PROVENCAL STRIPE
1 1/2 YARDS

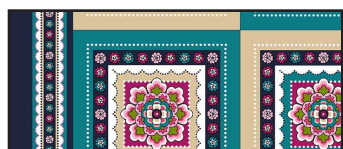


FABRIC G
CX8602 ROYAL
PROVENCAL BLOOM
1/2 YARD



BACKING OF YOUR
CHOICE
3 1/4 YARDS

TAUPE COLORWAY



FABRIC A
CX8604 TAUPE
PROVENCAL PATCH
1 YARD



FABRIC B
CX8601 CREAM
PROVENCAL VINE
1/2 YARD



FABRIC C
CX8601 NAVY
PROVENCAL VINE
1/8 YARD



FABRIC D
CX8605 PINK
PROVENCAL PLAIN STRIPE
1/2 YARD



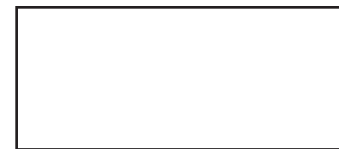
FABRIC E
CX8598 NAVY
PROVENCAL GARDEN
1/2 YARD



FABRIC F
CX8600 PINK
PROVENCAL STRIPE
1 1/2 YARDS



FABRIC G
CX8602 NAVY
PROVENCAL BLOOM
1/2 YARD



BACKING OF YOUR
CHOICE
3 1/4 YARDS



LA FLEUR TILES FUSSY CUT BORDER QUILT

KEY	CUTTING INSTRUCTIONS
A	(4) Fussy cut 5 ½" squares of yellow panels (9) Fussy cut 5 ½" squares of blue panels (skip rows to allow for the seam allowance)
B	(2) 8 ¼" squares, cut twice on diagonal. (4) strips 1 ½" x 42" subcut (2) 1 ½" x 26" strips and (2) 1 ½" x 28" strips. (2) 4 ¾" squares, cut once on diagonal.
C	(3) 2 5/8" squares, cut twice on diagonal. (12) 1 ½" squares.
D	(6) strips 1 ½" x 42"; subcut (36) 1 ½" x 5 ½" rectangles. (4) strips 1 ½" x 42". Subcut (2) 1 ½" x 34" strips and (2) 1 ½" x 36" strips.
E	(4) strips 3 ½" x 42" Subcut (2) 3 ½" x 28" strips and (2) 3 ½" x 34" strips.
F	Fussy cut (4) 6 ½" wide x 50" long on the lengthwise cream border (or other border section from this fabric if you prefer)
G	(5) 2 ½" x 42" binding strips

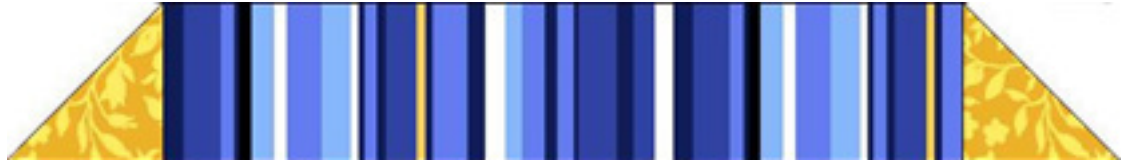
LA FLEUR TILES FUSSY CUT BORDER QUILT

Constructing Block Assembly

Blue Corner Block:

1. Sew the short side of a Fabric C $2\frac{5}{8}$ " triangle to both short ends of a Fabric D $1\frac{1}{2}$ " x $5\frac{1}{2}$ " rectangle as shown to make Sashing Row 1.
Make 2. Set aside.

Step 1 ->



2. Sew a Fabric D $1\frac{1}{2}$ x $5\frac{1}{2}$ " strip to both sides of a Blue panel $5\frac{1}{2}$ " square.
Square up to $7\frac{1}{2}$ " x $5\frac{1}{2}$ ". Make 9. Set aside.

Step 2 ->

Make 9.



3. Sew a Sashing Row 1 to the top of a block in Step 2 to complete a Corner Block. Square up to $7\frac{1}{2}$ " x $6\frac{1}{2}$ ". Make 2.

Step 3 ->

Make 2.



LA FLEUR TILES FUSSY CUT BORDER QUILT

4. Sew the short side of a Fabric B $8\frac{1}{4}$ " triangle to both sides of the Corner Block as shown. Sew the long side of a Fabric B $4\frac{3}{8}$ " triangle to the top to make Row 1 of the quilt center. Make 4.

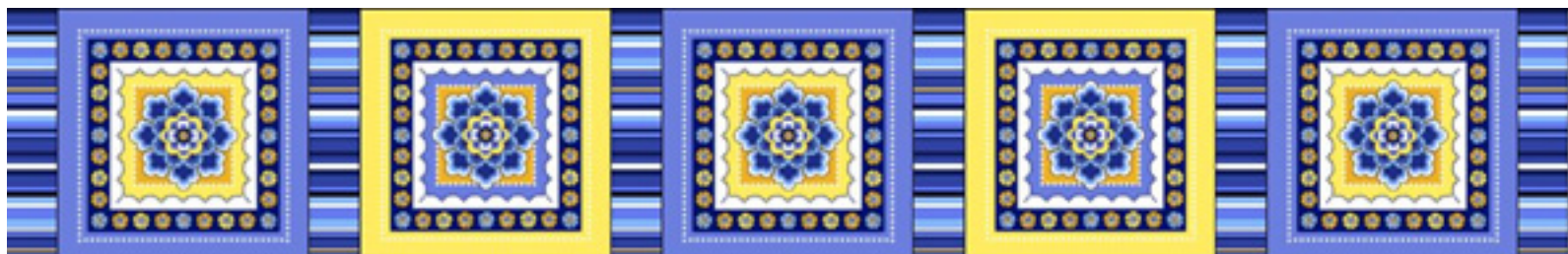


5. Sew a unit from Step 2 to both sides of a Yellow panel block to make Row 2 as shown. Should measure $19\frac{1}{2}$ " x $5\frac{1}{2}$ ". Make 2. Sew a Fabric B $8\frac{1}{4}$ " triangle to both ends of the row to complete Row 2.

Row 2:



6. Sew 3 units from Step 2 alternating with a yellow panel block in a horizontal row as shown, with 5 panels across. Should measure $31\frac{1}{2}$ " x $5\frac{1}{2}$ ".



LA FLEUR TILES FUSSY CUT BORDER QUILT

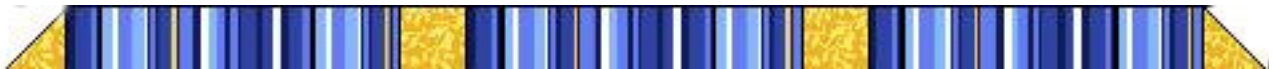
7. Sew the long side of a Fabric B $4 \frac{3}{8}$ " triangle to the right and left end of Row 3 to complete.



Sashing Rows:

8. Sew (3) Fabric D $1 \frac{1}{2}$ " x $5 \frac{1}{2}$ " strips end to end with (2) Fabric C $1 \frac{1}{2}$ " squares. Sew a Fabric C $2 \frac{5}{8}$ " triangle to both ends as shown. This completes Sashing Row 2. Make 2.

Sashing
Row 2 ->



9. Sew (5) Fabric D $1 \frac{1}{2}$ " x $5 \frac{1}{2}$ " strips end to end with (4) Fabric C $1 \frac{1}{2}$ " squares. Sew a Fabric C $2 \frac{5}{8}$ " triangle to both ends as shown. This completes Sashing Row 3. Make 2.



Assembly of Quilt Center

10. Working from top to bottom, sew the quilt rows and sashing rows as follows (Since the blocks are on point, your quilt center will take a diamond shape as we sew the rows together).

11. Sew a Sashing Row 2 to the bottom of Row 1 from Step 4.

12. Sew quilt Row 2 to the bottom of the Sashing Row 2.

13. Sew a Sashing Row 3 to the bottom of the quilt.



LA FLEUR TILES FUSSY CUT BORDER QUILT

14. Sew Row 3 to the bottom of the quilt.
15. Rotate and sew the remaining Sashing Row 3 to the bottom of Row 3.
16. Rotate and sew the remaining Row 2 to the bottom of the quilt.
17. Rotate and sew the remaining Sashing Row 2 to the bottom of Row 2.
18. Sew the remaining Row 1 to the bottom of the quilt to complete the quilt center. **See Diagram on page 7 for row placements.**

Inner border

19. Sew a Fabric B $1\frac{1}{2}$ " x 26" strip to both sides of the quilt center. Sew the Fabric B $1\frac{1}{2}$ " x 28" strips to the top and bottom of the quilt.

Border 2:

20. Sew a Fabric E $3\frac{1}{2}$ " x 28" strip to the sides of the quilt. Sew a Fabric E $3\frac{1}{2}$ " x 34" strip to the top and bottom of the quilt.

Border 3:

21. Sew a Fabric D $1\frac{1}{2}$ " x 34" strip to both sides of the quilt. Sew a Fabric D $1\frac{1}{2}$ " x 36" strip to the top and bottom of the quilt.

Outer Border:

22. Fold each Fabric F border strip in half lengthwise and mark with a pin. Fold the sides of the quilt center in half and mark with a pin. Match up the pinned centers on all four sides and stitch to within $\frac{1}{4}$ " from each corner. Miter the corners to finish.

Binding:

23. Layer the quilt with backing and batting. Quilt as desired. Attach Fabric G $2\frac{1}{2}$ " binding strips to finish.

LA FLEUR TILES FUSSY CUT BORDER QUILT

Quilt Center Row and Sashing Assembly Diagram. Steps 11-18.

